



Correction to: Wnt/ β -catenin signaling pathway in severe preeclampsia

Xiaofang Wang¹ · Zhan Zhang^{1,2,5} · Xianxu Zeng³ · Jinming Wang² · Linlin Zhang¹ · Wanyu Song⁴ · Ying Shi¹

Published online: 29 November 2021
© Springer Nature B.V. 2021

Correction to:

Journal of Molecular Histology (2018) 49:317–327
<https://doi.org/10.1007/s10735-018-9770-7>

Recently, the authors noticed that there was a mistake in one of the figures in their paper. Unfortunately, they uploaded the wrong figure 6 panel c and d. In the published paper, the figure 6d is the same picture in figure 4b and panel for 4c is the same as panel 6c. To analyse the results of immunohistochemistry (IHC), 2–3 pictures were taken of each tissue section from different angles. After analysis, they picked some

representative images and placed them to the new folder to assemble the figures. Due to the image labelling error, the authors included the wrong figure 6 panels. However, the results are reliable.

The corrected Fig. 6 is shown below. The related original figures were sent to the editor for verification. We sincerely apologize for this unintentional error which we failed to catch during submission and subsequent steps.

The original article can be found online at <https://doi.org/10.1007/s10735-018-9770-7>.

✉ Zhan Zhang
zzdxzhang111@163.com

¹ Department of Clinical Laboratory, The Third Affiliated Hospital of Zhengzhou University, Zhengzhou 450052, Henan Province, China

² Department of Obstetrics and Gynecology, The Third Affiliated Hospital of Zhengzhou University, Zhengzhou 450052, Henan Province, China

³ Department of Pathology, The Third Affiliated Hospital of Zhengzhou University, Zhengzhou 450052, Henan Province, China

⁴ Department of Obstetrics and Gynecology, The People's Hospital of Henan Province, Zhengzhou 450000, Henan Province, China

⁵ The Third Affiliated Hospital of Zhengzhou University, No. 7 Kangfu Front Street, Zhengzhou 450000, Henan, China

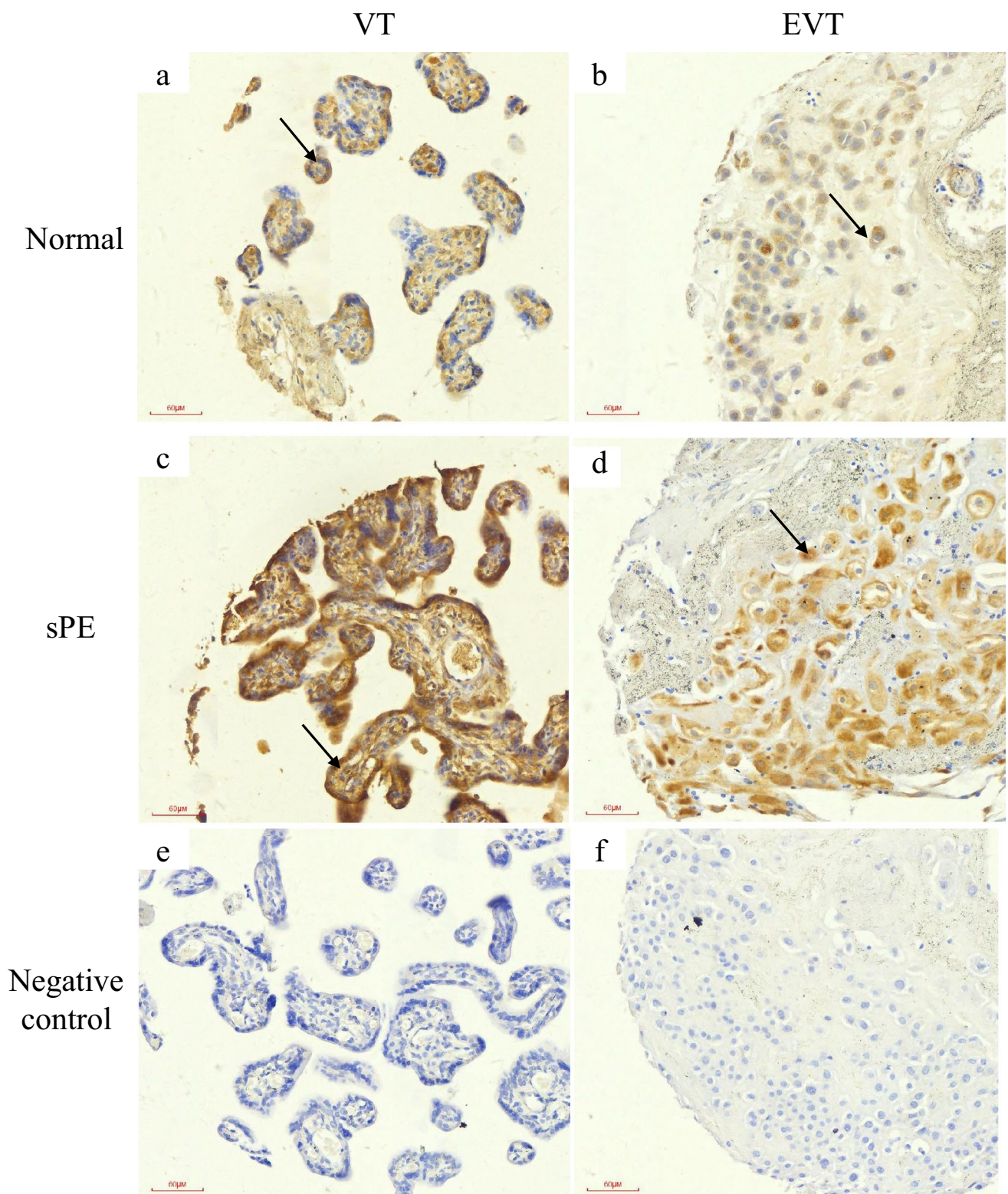


Fig. 6 DKK1 staining of placental TMA in the two groups. **a, b** DKK1 staining of the normal pregnancy placental TMA. **c, d** DKK1 staining of the preeclamptic placental TMA. Compared with

the normal controls, DKK1 expression is significantly increased in the sPE group. **e, f** Negative control. *VT* villous trophoblast, *EVT* extravillous trophoblast

Publisher's Note Springer Nature remains neutral with regard to jurisdictional claims in published maps and institutional affiliations.