

CORRECTION

## Correction to: Structure of local adaptation across the landscape: flowering time and fitness in Mexican maize (*Zea mays* L. subsp. *mays*) landraces

Kristin L. Mercer  · Hugo Perales

Published online: 12 December 2018  
© Springer Nature B.V. 2018

**Correction to:** Genet Resour Crop Evol

<https://doi.org/10.1007/s10722-018-0693-7>

The authors regret the incorrect labelling of the y-axis for panels A and B in Fig. 3 in the original publication of the article. The y-axis of Fig. 3A, B should read, “Total seed per emerged seedling (g)” rather than “Total seed per reproductive plant (g)”.

The corrected figure is given below:

---

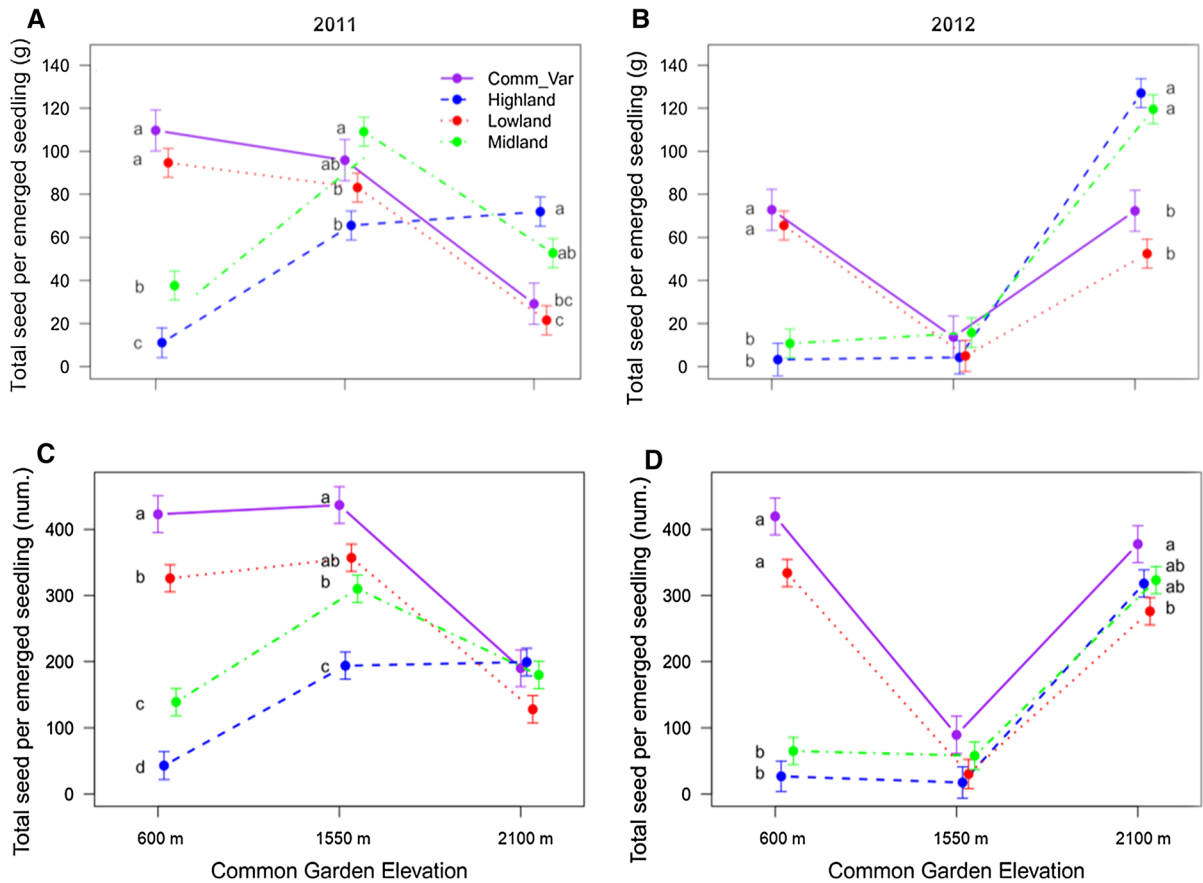
The original article can be found online at  
<https://doi.org/10.1007/s10722-018-0693-7>.

---

K. L. Mercer (✉)  
Department of Horticulture and Crop Science, Ohio State  
University, Columbus, OH, USA  
e-mail: mercer.97@osu.edu

K. L. Mercer  
Department of Botany, University of British Columbia,  
Vancouver, BC, Canada

H. Perales  
Department of Agriculture, Society, and Environment, El  
Colegio de la Frontera Sur, San Cristóbal de Las Casas,  
Chiapas, Mexico  
e-mail: hperales@ecosur.mx



**Fig. 3** Total fitness, a trait that combines the fitness components of survival and total seed variables, for landrace and commercial maize across common garden elevations in Chiapas, Mexico. Separate columns for 2011 (left) and 2012 (right) data for total seed per emerged seedling (g) and total seed per emerged seedling (num.). Least squares means and SE bars.

Maize type means within a garden accompanied by different letters differ from one another using a Tukey–Kramer adjustment for multiple comparisons. Where no letters are present, there were no significant differences among types. *Comm\_var* commercial varieties, *highland* highland landraces, *midland* midland landraces, *lowland* lowland landraces