



Performance and evolutionary adaptation of heterogeneous wheat populations

Jörg Peter Baresel · Lorenz Bülow · Maria Renate Finckh · Lothar Frese · Samuel Knapp · Urs Schmidhalter · Odette Weedon

Received: 12 October 2021 / Accepted: 11 July 2022 / Published online: 3 September 2022
© The Author(s) 2022

Abstract The aim of this study was to investigate the potential of heterogeneous composite cross populations (CCPs) to increase sustainability and resilience of wheat cropping systems, a so far largely neglected approach. For this purpose, 10 CCPs originating from one CCP created in 2001 and having evolved under different environmental conditions since the F_5 , were compared in the F_{15} and F_{16} with 10 recently released cultivars and 10 inbred lines extracted randomly from the populations. Field trials were performed over 2 years at 2 organic and 2 conventional locations. Under organic conditions, yields of the CCPs were similar to those of recent commercial cultivars with comparable protein content, and considerably higher than that of the inbred lines.

Supplementary Information The online version contains supplementary material available at <https://doi.org/10.1007/s10681-022-03072-2>.

J. P. Baresel (✉) · S. Knapp · U. Schmidhalter
Department of Plant Science, Technical University
of Munich, Freising, Germany
e-mail: baresel@uni-kassel.de

J. P. Baresel · M. R. Finckh · O. Weedon
Section of Ecological Plant Protection, University
of Kassel, Witzenhausen, Germany

L. Bülow · L. Frese
Julius-Kühn-Institut, Quedlinburg, Germany

S. Knapp
Nordic Seed Germany GmbH, Nienstädt, Germany

Under conventional conditions, conventionally-bred cultivars outyielded the other experimental entries. The organically-bred cultivars had the highest protein contents in both farming systems followed by the CCPs and the conventionally-bred cultivars. The yield stability and foliar disease resistances of CCPs was on average higher than that of the commercial cultivars and considerably higher than that of the inbred lines, indicating that the higher stability of the CCPs was due to their high genetic diversity, not to their genetic background. CCPs that had evolved in different environments differed in some morphological and phenological traits, indicating that adaptation to environmental conditions had taken place through natural selection. Greater tillering capacity and increased soil cover of CCPs in the juvenile stage compared to the inbred lines indicates niche complementarity in the CCPs, that may contribute to improved resource use and to an overall ecological intensification. We conclude, that the cultivation of CCPs or similar heterogeneous populations represents an important opportunity to increase the resilience of wheat cultivation, which should be given greater consideration in future research and breeding.

Keywords Wheat · Breeding · Composite cross populations · Evolutionary breeding · Stability · Genetic diversity

Introduction

Yield gain patterns in Germany have changed considerably since 2000. Although yield increases up until 2000 have been steady, the standard deviation post-2000 has increased significantly and more than doubled on average. Additionally, the yield gap between official on-farm assessments and official variety trials is continuously increasing (see Laidig et al. 2014). One reason for these changes is the more frequent occurrence of weather extremes and the resulting changes in pest and pathogen distribution and occurrence (Juroszek and Tiedemann 2013a, b). As a consequence, breeding has to take into account increasingly different, and in part opposed characteristics, such as tolerance to heat, cold, drought stress and water logging, as well as disease and pest resistances (Heisey and Day-Rubenstein 2015). In addition, there is a need for improved water and nutrient acquisition ability under water stress, as well as differential ripening times in order to cope with increasing seasonal drought (Mohammadi 2018; Mwadzingeni et al. 2016).

Since the early twentieth century, most wheat breeding has relied on pure line breeding. Diversification strategies such as the use of multilines, cultivar mixtures, and evolutionary breeding have been advocated since the 1940s especially to improve weed competitive ability and pest and pathogen resistances (Finckh and Wolfe 2015). Evolutionary breeding (Suneson 1956) is usually based on the use of multiparental diallelic or hierarchical crossing systems (composite cross populations, CCPs). In a recent review, Ceccarelli and Grando (2020) suggest, that “research on evolutionary populations and mixtures is able to address the complexity of climate change while stabilizing yield, decreasing the use of most agrochemicals...”, a view that is supported by ecological research on diversification (Brooker et al. 2021). Both the organic sector (e.g., Dawson et al. 2008; Döring et al. 2015; Murphy and Carter 2013), as well as breeders interested in creating stable and adaptable materials (e.g. Goldringer et al. 1998; Bonnin et al. 2014; Tsujimoto et al. 2015; Bocci et al. 2020) indicate great interest in evolutionary breeding.

Yield stability is of particular interest in heterogeneous populations as positive relationships between diversity and productivity and stability have been reported (Finckh et al. 2000; Barot et al. 2017). While

numerous parameters have been developed to characterize yield stability (Annicchiarico 2002), two basic concepts can be distinguished, each requiring the use of different parameters:

1. *Type 1 or static stability* describes stability that minimizes risk in the event of unforeseeable environmental influences (e. g. years with different weather conditions or occurrence of pathogens). Ideally in this case, similar (high) yields are achieved in the individual years, however, stability under such unforeseen conditions may result in lower than average yields with little variance between years. The type 1 stability is described by the variance across environments and parameters derived from it, such as the coefficient of variation and the parameters ‘POLAR’ and ‘aCV’ (Döring et al. 2015).
2. *Type 2 or dynamic stability* aims at equal distribution of the yield risk across all locations where the genotype is cultivated and measures yield increase proportional to the environment mean. Dynamic stability measures account for the productivity level of each environment and are more suitable if the response to different locations or management factors is assessed. These include the variance of the yields relative to the location mean (Annicchiarico 2002), as well as the parameters proposed by Eberhart and Russell (1966) and Shukla (1972). In addition, several other indices have been proposed and applied to populations and are described in detail elsewhere (Weedon and Finckh 2019).

If the factors that cause yield fluctuations or differences are the same, e. g. weather or diseases, it is not possible to optimize static and dynamic stability at the same time, because high static stability leads (but is not equivalent) to low dynamic stability, while high dynamic stability results in medium static stability. Thus, static parameters are relevant for risk minimization over years, while dynamic parameters are more suitable to identify genotypes or populations adapted to a wide range of environments such as climate zones, soil types or farm management.

Several winter wheat CCPs based on the intercrosses of up to twenty parents with either high-yielding (Y) or good baking quality (Q) characteristics were created in 2001 (Döring et al. 2015), and

have been exposed to natural selection in our research group in Germany since 2005 (F_5) under organic and conventional conditions. The effective population sizes were large enough to avoid genetic drift so that the naturally low outcrossing rates of wheat sufficed to maintain the genetic variability in the CCPs (Brumlop et al. 2019). Early vigor, as measured through root system development and seedling growth of wheat CCPs has been shown to increase under organic management compared to conventional management (Bertholdsson et al. 2016; Vijaya Bhaskar et al. 2019b), pointing to specific adaptive processes within the CCPs to the growing system. Nevertheless, populations maintained under the same conditions may still change over time in different ways (Weedon and Finckh 2019). Under organic conditions, yields and baking quality of the CCPs corresponded to or exceeded that of the crossing parents even in advanced generations (Döring et al. 2015; Brumlop et al. 2017). The derived from the intercross of eight high yielding with twelve baking quality parents has been shown to be highly weed suppressive (Finckh et al. 2018) and quite adaptable to ecological intensification (Baltazar and Boutsen 2019). Preliminary data on the CCYQ suggests that when broadcast-sown under organic conditions and managed without further mechanical weed control, it may be pre-adapted to minimum tillage conditions (Schmidt et al. 2018). The CCYQ was registered as an open-source heterogeneous variety in 2020 under the name ‘EQuality’ (OSS 2020).

Across ten generations, yields of organically and conventionally maintained CCPs were comparable to the reference cultivars under organic conditions, but inferior under conventional conditions. In contrast, yield stability (both in the dynamic and static sense) of the populations was higher than that of reference variety ‘Capo’ in both management systems (Weedon and Finckh 2019). For a more thorough comparison of yield and yield stability and in order to determine the effects of population history on performance, populations with variable histories were compared to a larger set of pure line cultivars across a set of environments, including both conventional and organic systems, as well as variable nutrient inputs.

In the present paper, we compare a set of 10 CCYQ derived from the original population described above in 2005 (F_5), but with varying population histories in terms of management. The role of diversity

for yield and stability was assessed by including 10 lines extracted from the CCYQ population in the F_7 . Moreover, conventionally and organically bred baking quality cultivars were used for comparison.

In order to increase the range of grain yields and protein contents in the tested assortment, two feed cultivars with very high yields, but low protein content were included, namely the cultivar ‘Elixer’ and the hybrid variety ‘Hybery’.

Within this article, the following questions are addressed:

1. What are the effects of within population diversity on performance and stability? In order to answer this, the populations were compared to the randomly extracted lines for overall performance and stability.
2. How do the populations and commercial cultivars of different breeding origin compare in their performance for yield, protein content and stability across environments (organic vs. conventional farming system and fertilization level)?
3. What are the effects of evolutionary history on agronomic traits of the populations and do these interact with the farming system and input levels?

Materials and methods

Plant material

Populations

In 2001, a half diallel cross of 20 wheat cultivars released between 1934 and 2000, selected for good performance under low-input conditions (Jones et al. 2010), was performed by the Organic Research Centre, Elm Farm and the John Innes Institute in the UK. All populations examined in this study are based on this ‘CCYQ’ (Composite Cross YQ). In brief it is based on the progenies of the crosses of eight high yielding (Y) with eleven high baking quality (Q) parents, including the progeny of all 19 parental cultivars crossed with ‘Bezostaya’. In addition, crosses of the parents with naturally male sterile lines were added to enhance outcrossing in early generations (see Döring et al. 2015; Brumlop et al. 2019 for details). In 2005, seed of the F_4 grown at various UK sites was bulked and a sample was kept in the UK, one sent to the

University of Kassel and one to the Hungarian Academy of Sciences in Martonvasar where the CCPs have been since been maintained.

At the University of Kassel, the CCP was split and increased under both organic and conventional conditions for one year. In 2006, each organic and conventional population were divided into two parallel sub-populations, which were maintained at that site in plots $\geq 150 \text{ m}^2$ to avoid genetic drift without mixing and separated from other wheat by at least 3 m (Brumlop et al. 2019). In 2008, two further organic subpopulations were created that were broadcast-sown (BC) every year and maintained without weed control under organic management.

In addition, in 2008 eight partners in seven European countries (UK, Netherlands, Denmark, Germany, Switzerland, France, and Hungary) received a portion of the population maintained either in the UK, Hungary or at University of Kassel. The populations were grown from the F_8 to the F_{12} by each partner for one year and then passed on to the next in a distinct cycling scheme with the aim to expose the populations to variable environmental conditions over time (Weedon et al. 2016; Weedon 2018). Three cycling populations, originating from one of the three original countries (UK, Hungary and Germany), were included in this study and were compared to a CCYQ population that had been maintained at the University of Kassel since 2008 (Cycl. Control). In summary, the CCPs had the following variable histories (see Table S1 for population abbreviations and management history):

- Organic (low input—LI) vs. conventional (high input—HI) farming systems at University of Kassel
- Broadcast seeding (BC) without weed management vs. seeding in rows with mechanical weed management, both under organic conditions.
- Changing environments across sites for 5 years (Cycl.)

Random lines

In 2007, 100 spikes were extracted randomly from the original population (CCYQ, F_6 in the UK, grown under organic conditions) from which inbred lines were derived and subsequently maintained at the

Technical University of Munich (TUM) under conventional conditions. Ten of these lines were randomly chosen and included in the trial in order to assess the genetic potential of the populations while excluding intra-specific diversity effects.

Commercial cultivars

The commercial cultivars included in the trials were (a) four baking quality cultivars bred for conventional agriculture, (b) four baking quality cultivars bred for and under the conditions of organic agriculture and (c) two high-yielding conventionally bred cultivars for feed, including one hybrid line (Table S2). The latter were included in order to extend the range of yield, protein content and yield stability potential, but only to a limited extent for direct comparison with the populations as this is only meaningful within groups of similar yield and baking quality classes.

Field trial locations, management and experimental design

The field trials took place at four locations: Viehhausen, Dürnast, Neu-Eichenberg, and Quedlinburg (Table S3). The experimental station Viehhausen (VH) of TUM has been managed organically since 1995. Soils are cambisols based on sandy loam with a water holding capacity of approx. 180 mm. No mineral fertilizers, fungicides, insecticides or herbicides were applied. Weeds were controlled mechanically through harrowing at tillering. The pre-crop was a grass-clover ley in both years. Environmental and soil conditions at the conventional research station Dürnast (DN) of TUM, situated close to Viehhausen, are very similar to VH. The pre-crop was maize in both years. Weather data for both sites were provided by the Bayerische Landesanstalt für Landwirtschaft (Station Nr. 8, Freising), which is situated approx. 7 km from VH and 3 km from DN.

The research station of the University of Kassel in Neu-Eichenberg (NE) has been managed organically since 1984; no mineral fertilizers, fungicides, insecticides or herbicides were applied. Weeds were controlled mechanically through harrowing at tillering. The soil is a fine loamy loess soil (deep Haplic Luvisol) with a useable field capacity of approx. 180 mm. In order to provide a very low nitrogen site, the pre-crop was triticale in both years. Weather data were

provided by an on-station meteorological station for both seasons.

The soil at the conventionally managed experimental station of the Julius-Kühn-Institute at Quedlinburg (QB) is a chernozem with a usable field capacity of approx. 220 mm. Pre-crop was oilseed rape in both years. Weather data were provided by an on-station meteorological station for both seasons.

All experiments were set up as split-plot experiments with four replicates with N-fertilisation as the main factor and genotypes assigned to the subplots. Plot size varied depending on the equipment available at the respective experiment stations (see Table S3 for details). All trials were tilled conventionally using the plough and managed according to the common agronomic practise of the respective environment, comprising application of fungicides and growth regulators in the conventionally managed environments.

Assessments

Ground cover of weeds and wheat (%) was visually estimated at the end of tillering (BBCH 27–29). Heading date was assessed visually and expressed in number of days from 1 January. Leaf diseases were visually estimated as percentage of non-green leaf area per plot as described by Brumlop et al. (2017) at the time of flowering (BBCH 60–65). Moreover, the predominant foliar pathogens were noted. Plant height was measured manually after flowering (BBCH 70). Based on manual cuts of 1 m² per plot, the number of spikes/m², the number of grains per ear and the average ear weight were determined. Yields were corrected to 14% moisture content and thousand kernel weight (TKW) determined. Grain protein content was determined by near-infrared spectrometry (NIRS) using commercial standard devices and calibrations.

Data analysis

Statistical analyses were performed using R Version 3.4.3 (R Core Team 2020). Linear mixed models were built using the R package “lme4” (Bates et al. 2015), multiple comparison of means was successively performed based on the significance of pairwise comparisons of adjusted means, using the packages “emmeans” (Lenth 2016) and “lmerTest” (Kuznetsova et al. 2017).

The percentage of leaf area affected by diseases at flowering was not included in the overall ANOVA, but analyzed for each single experiment, as different diseases were present in the single environments and the data were therefore not comparable.

For the group comparisons i.e. populations (Table S1), the different groups of commercial cultivars (Table S2) and the randomly extracted lines), the *group* (G), the *farming system*, i.e. organic vs. conventional (S), the *input level* (I), as well as the interactions $G \times S$, $G \times I$ and $G \times S \times I$ were considered fixed factors, while trial, i.e. location \times year, and genotype, i.e. cultivar, line or population were considered random factors.

Response variables were ground cover, heading date, plant height, yield, yield components, protein content, and protein yield. This analysis was performed with two different subsets: (a) only commercial cultivars and populations for assessing the potential of populations and (b) populations and random lines for assessing the impact of within-population diversity on yield and other variables.

For comparison of populations evolved under different conditions, the fixed factors were genotype (G), farming system in the evaluation trial (S), nitrogen input level in the evaluation trial (F), as well as their interactions $G \times S$, $G \times F$ and $G \times S \times F$. The single experiment (T, location \times year), replications and nitrogen fertilization blocks were considered random factors. Response variables were those as mentioned above. For the comparison of the ten CCPs, three separate groups of the parallel populations were created for comparison. These included the high (HI) and low input (LI) CCPs that had evolved without mixing as parallel populations in Neu-Eichenberg for 10 years, as well as the two parallel broadcast populations (BC) (Table S1). Linear contrasts were used to compare between the grouped parallel populations (LI, HI, BC), the three cycling populations and the cycling population control population, which had been maintained in Germany since 2005. These linear contrasts allow for the comparison of populations that have evolved in parallel, as well as between populations with differing evolutionary pathways.

Stability was assessed for both grain yield and protein content, based on the variance of absolute and relative yields or protein content over 16 environments (2 year \times 4 locations \times 2 fertilization levels). The variance of absolute yields describes the “static”

or “Type 1” stability concept (Annicchiarico 2002), while the variance of the yields relative to the overall mean in each environment is a measurement for “dynamic” or “Type 2” stability (Annicchiarico 2002). In order to avoid eventual biases, due to the application of only one stability index, we additionally calculated regression coefficient according to Finlay and Wilkinson (1963), i.e. the slope of the regression of genotype (or population) yields on the environmental mean, which may be both interpreted as both static (considering the deviation from 0) and dynamic stability (considering the deviation from 1), and the variance of the residuals (Mean square error, MSE) of the joint regression (Finlay and Wilkinson 1963) according to Eberhart and Russell (1966), a measure of dynamic stability (type 2). Confidence intervals were calculated for the stability indices and they were compared using Ekbohm’s Test (Ekbohm 1981).

Results

General observations

In both years, the annual mean temperatures for each experimental station were similar to the long-term mean from 2003 to 2017. There was an overall water deficit in 2015/16 in Quedlinburg and in 2016/17 in Neu-Eichenberg (Figure S1). In addition, the year 2014/15 had been exceptionally dry in Neu-Eichenberg, resulting in a subsequent water deficit for 2015/16 at that site (Weedon and Finckh 2021).

Overall yield differences due to the fertilization level were only about 5% in 2016 and 10–20% in 2017, probably due to the droughts in Quedlinburg and Neu-Eichenberg in 2015/16 (Fig. 1). The prevailing foliar diseases in 2016 were yellow rust (*Puccinia striiformis* f. sp. *tritici*) at the two organic sites and DTR leaf spot (*Drechslera tritici-repentis*) and Septoria (*Zymoseptoria tritici*) at the conventional sites. In addition, brown rust (*Puccinia triticina*) played a role in the organic sites in 2017. Disease pressure was generally low (<15% non-green leaf area on average, almost no disease in the conventional site at Dürnast in both years due to successful application of fungicides), with the exception of Neu-Eichenberg in 2016 where yellow rust pressure was somewhat higher (Fig. 3).

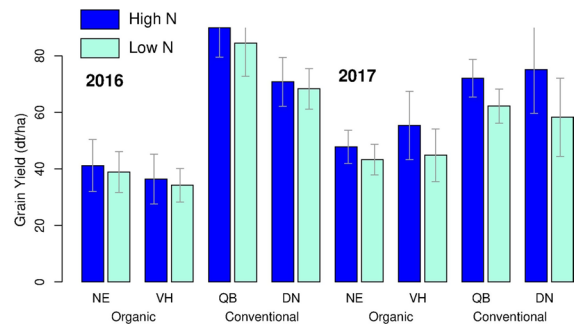


Fig. 1 Overview over yields per location. Year and fertilization level. Error bars indicate standard deviations. Differences between N levels were significant in all cases ($p < 0.05$). NE Neu-Eichenberg, VH Viehhasen, DN Dürnast, QB Quedlinburg. see Table 2 for details

Performance of populations, varieties and extracted breeding lines

The most important performance traits, namely *grain yield*, *grain protein content* and *protein yield*, are depicted in Fig. 2 for all genotypes and populations, both in organically and conventionally managed trials. A comparison among groups (populations, randomly extracted inbred lines and different groups of commercial cultivars) is shown in Tables 1 and 2, comprising *yield components* and *phenology*. The infestation with *leaf diseases* is shown in Fig. 3 and Table 4.

Populations versus randomly extracted inbred lines

Yields of the inbred lines extracted from the populations were significantly lower than those of the populations. The differences were greater under organic than under conventional management. In contrast, grain protein content was somewhat higher in the inbred lines than in the populations. Protein yields of populations were higher in organic, but not in conventional environments (Fig. 2, Table 2).

There was a marked difference in yield structure between populations and randomly extracted lines with populations indicating higher tillering capacity, earlier heading, but smaller spikes and lower TKW. Moreover, compared to the random lines, the populations were characterized by a higher ground cover at tillering under organic conditions and fewer seeds per ear (Table 2). Plant height tended to be similar

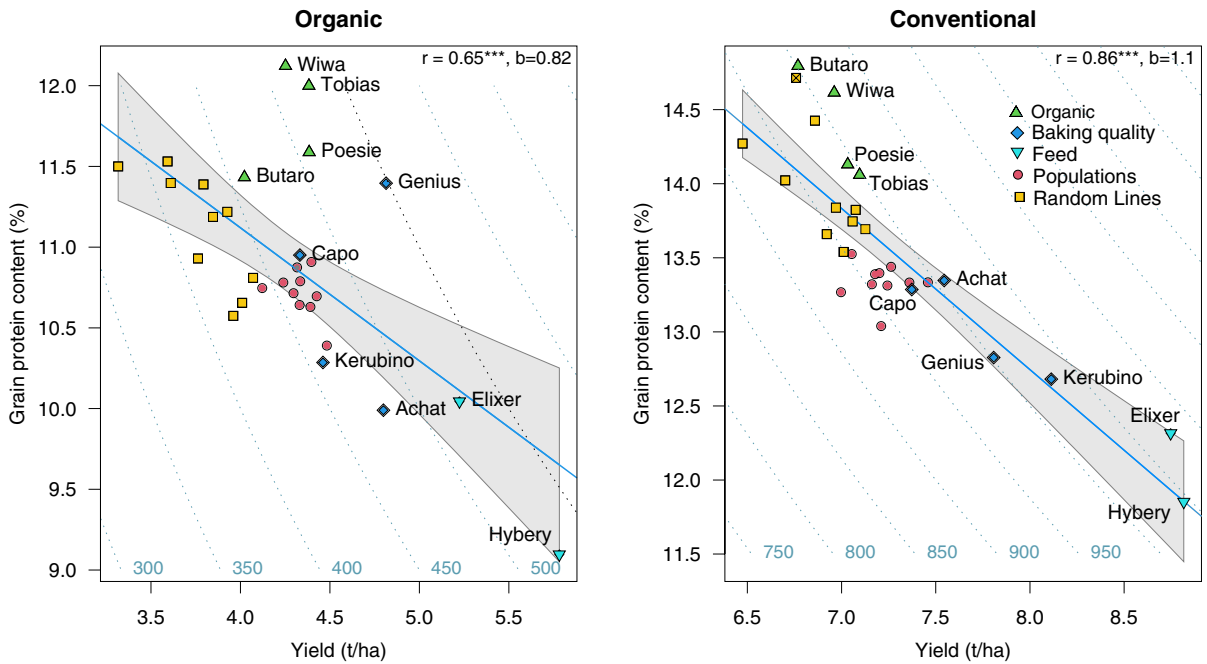


Fig. 2 Grain yield, grain protein content and protein yield of commercial cultivars, randomly extracted inbred lines and populations under organic and conventional management. The shaded area depicts the 5% confidence interval of the regres-

sion line. The dotted lines are isolines for different levels of protein yield in kg/ha). The graph depicts also the “grain protein deviation”, i.e. the deviation from the regression line

Table 1 Effects of group (Populations, inbred lines E- C- and organic varieties) and farming system

	DF	Yield		Protein yield		Height		TKW		Protein content	
		F	p	F	p	F	p	F	p	F	p
Group (G)	4	55.58	0.000	15.73	0.000	11.25	0.000	5.95	0.006	50.67	0.000
Input (I)	1	20.99	0.004	5.97	0.050	2.70	0.151	0.02	0.891	0.94	0.370
System (S)	1	26.27	0.002	46.08	0.000	1.63	0.249	0.16	0.704	11.08	0.016
G × I	4	4.30	0.005	3.22	0.022	0.35	0.791	0.26	0.853	0.31	0.820
G × S	4	8.69	0.000	2.23	0.083	26.53	0.000	2.07	0.103	2.17	0.091
I × S	1	0.24	0.643	0.36	0.569	0.01	0.915	5.75	0.051	0.02	0.895
G × I × S	4	3.24	0.022	1.65	0.176	0.13	0.943	1.28	0.281	0.19	0.906

	DF	Ears/m ²		Seeds/ear		Heading date		Ground cover	
		F	p	F	p	F	p	F	p
Group (G)	4	9.25	0.001	36.62	0.000	3.74	0.033	10.37	0.000
Input (I)	1	13.59	0.009	2.93	0.135	0.30	0.594	0.79	0.405
System (S)	1	2.38	0.174	6.86	0.039	0.06	0.818	0.74	0.422
G × I	4	2.57	0.053	0.82	0.481	0.19	0.904	0.93	0.427
G × S	4	5.39	0.001	6.71	0.000	1.20	0.309	9.24	0.000
I × S	1	0.82	0.399	0.21	0.659	0.58	0.463	1.52	0.260
G × I × S	4	0.74	0.530	1.46	0.224	0.59	0.621	3.50	0.015

N fertilization and their interactions on grain yield and other parameters. Results of the ANOVA, degrees of freedom (DF), F- and p values

Table 2 Grain yield and other parameters per group

	Commercial cultivars			Populations	Lines
	High yielding feed	Conv. baking	Organic baking		
(A) Organic environments					
Yield (t/ha)	5.50c	4.60b	4.26b	4.33b	3.79a
Grain weight (mg)	42.2ab	42.7ab	44.2ab	41.5a	43.8b
Grain protein (%)	9.57a	10.63b	11.75c	10.74b	11.12b
Ears/m ²	360bc	354bc	330b	375c	303a
Seeds/Ear	37.88c	31.43b	30.39ab	28.54a	30.78b
Heading (days of year)	153abc	152ab	154bc	152a	155c
Ground cover (%)	23.8a	24.1ab	23.8ab	26.5b	22.4a
Protein yield (kg/ha)	517c	486bc	498bc	464b	417a
(B) Conventional environments					
Yield (t/ha)	8.78d	7.71c	6.94ab	7.22b	6.91a
Grain weight (mg)	40.6ab	41.5ab	43.9b	41.0a	44.0b
Grain protein (%)	12.13a	13.09b	14.42c	13.35b	13.98c
Ears/m ²	450bc	454c	416ab	444bc	407a
Seeds/Ear	42.7b	35.9a	33.5a	34.7a	34.1a
Heading (days of year)	152a	151a	153a	150a	156b
Ground cover (%)	36.8a	36.3a	36.1a	36.4a	37.8a
Protein yield (kg/ha)	1056b	1005ab	1000ab	962a	964a

Comparison of least-squares means of populations and commercial cultivars. Different letters indicate significant differences among groups (see also ANOVA in Table 2)

between the populations and random lines (data not shown) and where disease pressure was high, the random lines generally indicated greater non-green leaf area values than the populations (Fig. 3).

Populations and commercial cultivars

Genotype group (G), fertilization level (I) and farming system (S) affected plant development (ground cover, heading, height), yield, most yield components, protein yield and grain protein content with significant $G \times S$ interactions in most cases (Table 1). While no $G \times I$ interactions occurred, three-way $G \times I \times S$ interactions for ground cover and grain yield was found (Table 1). The significant three-way interactions for yield was most likely due to differing degrees of lodging depending on fertilizer level and is not considered in detail.

As expected, yields of the two high yielding feed cultivars were higher in both growing systems in comparison to all other entries, while grain protein contents were the lowest (Fig. 2, Table 2). These two cultivars also yielded the most protein/ha, had

the highest number of seeds/ear and usually ranked very high in the number of ears/m². However, ground cover was slightly reduced under organic conditions (Table 2).

In the comparison of the conventionally and organically bred baking quality cultivars and the populations, no significant yield differences under organic conditions between the three groups were found, while under conventional conditions the conventionally bred baking cultivars outyielded the other two groups (Table 2). The organically bred cultivars always had the highest protein contents, followed by the populations and then the conventionally bred cultivars. Under conventional management, all groups achieved an average grain protein content above the threshold of 11% which is commonly regarded as the minimum required for bread production. Under organic management, however, only the organically bred cultivars and the random lines achieved an average grain protein content above the threshold of 11%, which was coupled with lower yields. The populations were characterized by a slightly higher ground cover and tillering capacity under organic

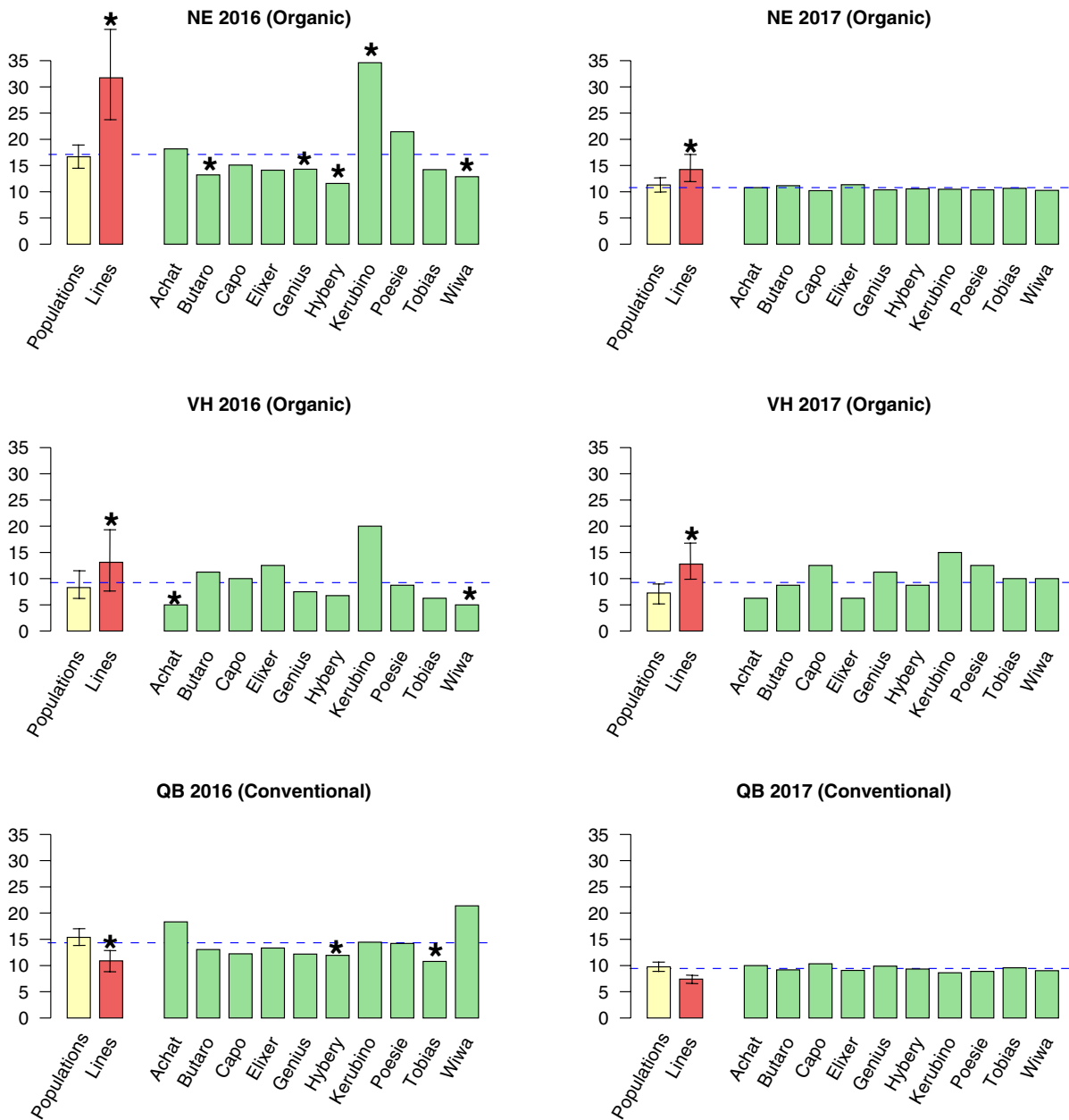


Fig. 3 Percentage of leaf area affected by fungal diseases at flowering per genotype (populations, inbred lines or commercial cultivars) and individual trial (see Table 3). Note, that there were different diseases in the respective trials (see Table S3 for details). Asterisks indicate genotypes differing significantly from the population ($p < 0.05$). As determined by

t test corrected according to Bonferroni. The horizontal dotted line depicts the average of the commercial cultivars). Error bars depict standard deviations. The results from Dürnast are not presented. Because infestation was very low ($< 5\%$) and no differences among populations and genotypes could be detected

but not under conventional management, as well as earlier heading date, smaller spikes and lower TKW (Table 2).

Where foliar diseases were recorded, the mean disease levels of the CCPs were similar to the mean of the commercial CCPs (Fig. 3). In contrast, the

random lines were significantly more affected in the organic environments where rust diseases were prevalent. In Neu-Eichenberg and Viehhausen in 2016, the severity of yellow rust on the commercial cultivars varied considerably with ‘Kerubino’ being particularly susceptible (Fig. 3, Table 4).

In almost all environments, conventionally bred baking cultivars yielded more than organically bred baking cultivars at the cost of considerably lower grain protein content with the exception of ‘Genius’ under organic conditions (Fig. 2).

Protein content and grain yield were strongly negatively correlated under both organic and conventional conditions (Fig. 2). With the exception of ‘Genius’ under organic conditions, conventionally bred baking and feed cultivars, populations and randomly extracted inbred lines were close to the regression line. However, under both management systems the organically bred baking cultivars indicated greater deviation from the regression line, considerably higher than that of the conventionally bred cultivars,

populations or randomly extracted inbred lines with similar yield potential (Fig. 2).

Stability

The yields relative to the site mean of the entries across all 16 environments varied considerably with the lowest variation seen in the cycling and non-cycling CCYQs followed by the commercial baking quality cultivars and then the extracted lines (Fig. 4).

Yield and yield stability must always be seen in the context of the respective yield levels (or overall protein content level in the case of the stability of protein content), therefore, yields (or protein contents) are plotted against the stability parameters (Fig. 5). For details, please refer to Tables S4 and S5, which include confidence intervals.

The static stability as expressed by low variance of absolute yields across environments was highest for the organically bred cultivars, albeit at a low yield level (Fig. 5a). In contrast, the variance of the

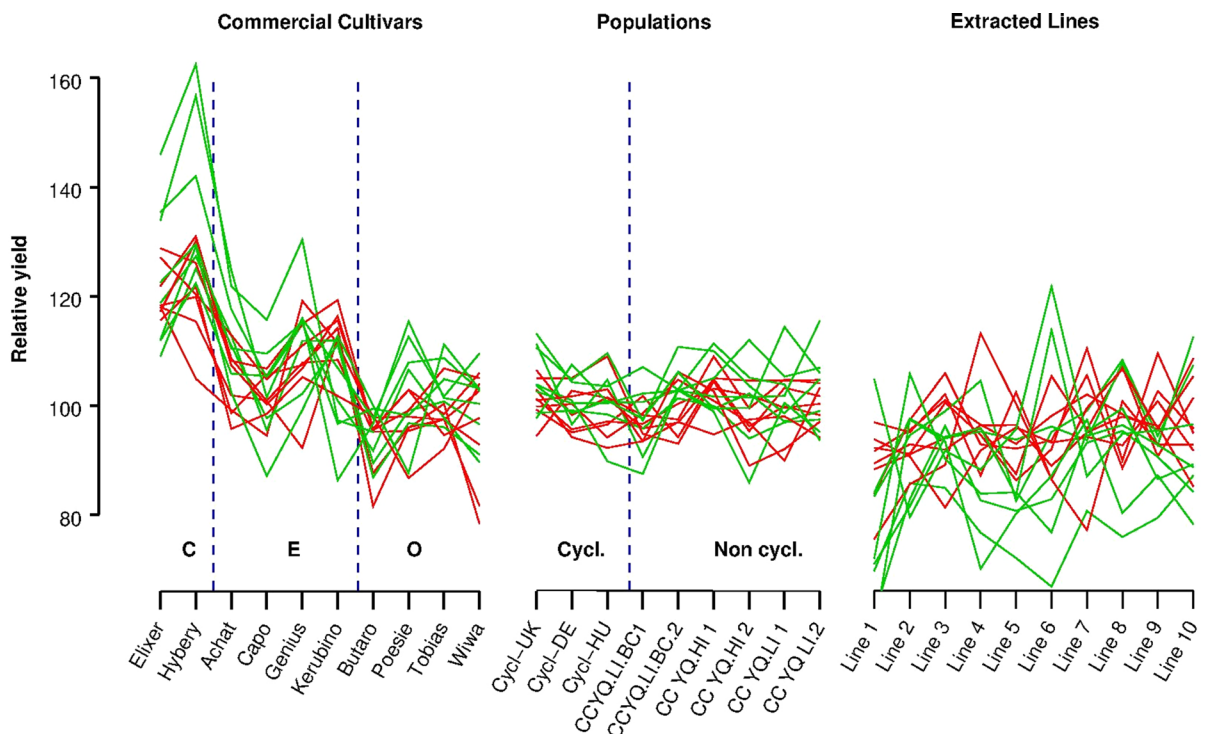


Fig. 4 Relative yields of Populations, Extracted inbred lines and commercial Cultivars in 16 environments (Locations \times years \times Fertilization level; each line corresponds to a genotype or population). Each line corresponds to an environ-

ment. Green lines depict organically, red lines conventionally managed environments. Genotypes or Populations are in the x-axis. ‘C’ stands for feed wheat, ‘E’ for conventionally bred baking quality wheat and ‘O’ for organically bred varieties

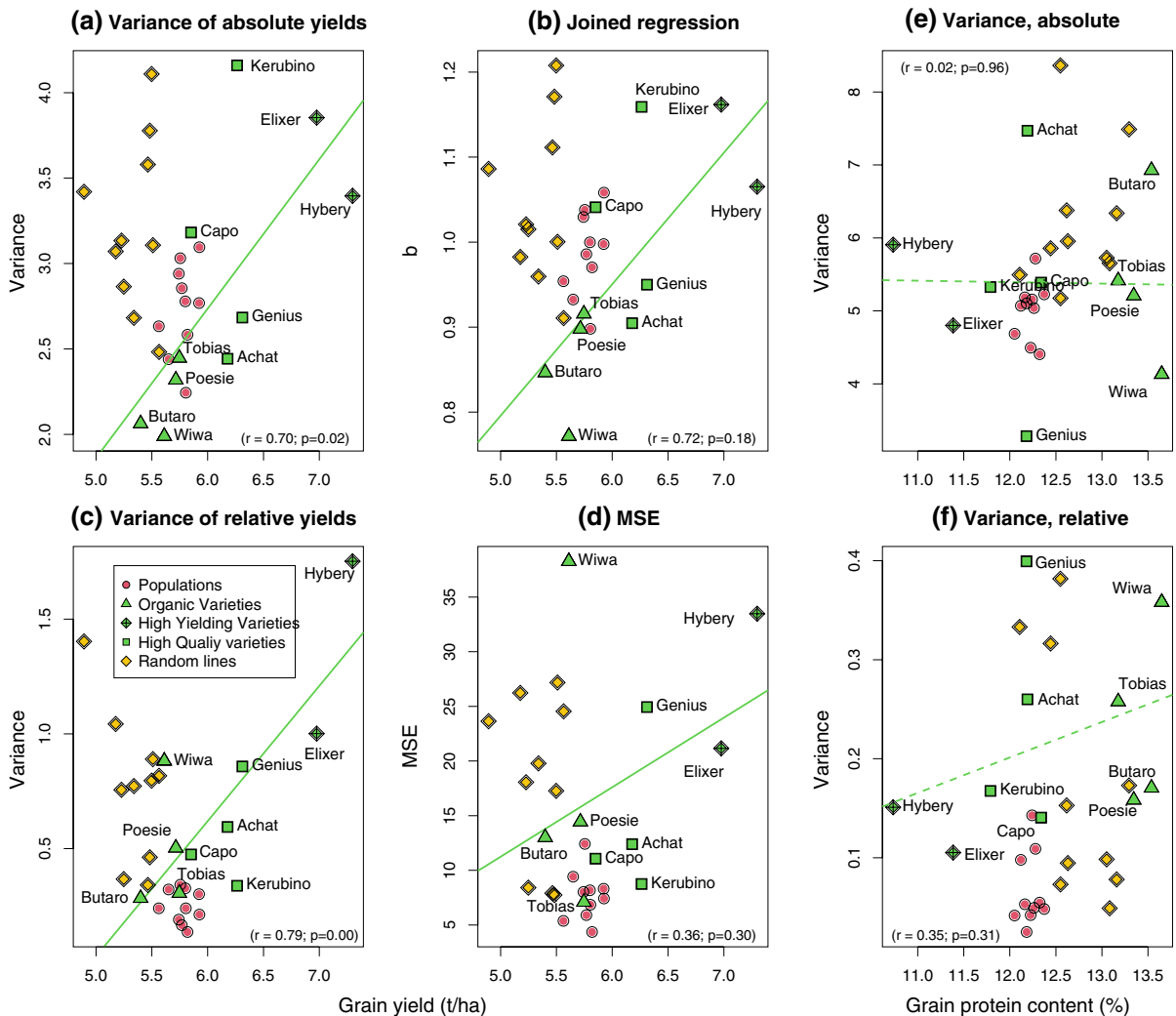


Fig. 5 Yield and yield stability (a–d) and stability of grain protein contents (e, f) over all environments expressed by different stability indices: variance of absolute yields (a), jointed regression according to Finlay and Wilkison (b), variance of relative yields (c), MSE according to Eberhard and Russel (d),

variance of protein contents (e) and variance of relative protein contents, referred to the mean of the respective environment (f). Regression line and r refer to the cultivars only. a, b, e refers to static, c, d, and f to dynamic stability

CCYQs was higher but also at a higher yield level. The conventionally bred baking cultivars were similar to the CCYQs in variance except for the yellow rust susceptible variety ‘Kerubino’ (Fig. 5a). The dynamic stability, i.e. the variance of the yields relative to the site mean, was best (lowest variance) for the CCYQs followed by the commercial baking quality cultivars, random lines and then the high yielding feed cultivars (Fig. 5c). Both for static and dynamic stability parameters, there was a negative correlation between yield and stability among commercial cultivars (Fig. 5a–d),

indicating that the higher the yield, the lower the stability. In contrast, the extracted lines had very high variances despite low yields indicating both low static and dynamic stability.

The regression coefficient (*b*) according to Finlay and Wilkinson (1963) (Fig. 5b) allows conclusions to be drawn about the suitability for high or low input systems. According to this, the two high-yielding feed quality cultivars and ‘Kerubino’ are distinct HI cultivars, while the organically bred cultivars are suitable for LI systems, followed by the populations, which

according to this parameter indicate good adaptation to a wide range of environments.

Similar trends were observed for protein content stability, which is not surprising as protein content and yield are closely correlated: relatively high stability of the populations, low stability of the inbred lines, while the stability of the commercial cultivars varied over a broader range. (Fig. 5e, f).

Effects of evolutionary history on the performance of the populations

There were significant effects of the evolutionary history on plant height, grain protein content, yield and most yield parameters (Table 3). Heading date was affected by history under conventional but not under organic conditions, with all populations heading earlier under conventional conditions. Otherwise, the evolutionary history did not interact with the farming system and fertilizer input (Table 3). No significant effect of the evolutionary environment on foliar diseases could be detected (data not shown).

The populations which evolved under conventional management (HI) were significantly taller than the CCPs that had evolved under organic conditions at the same site (Table 3). The highest yield was achieved by the cycling population Cycl_{UK}, that originated from the UK. This population also produced the highest number of ears/m², while the highest TKW was produced by the cycling population Cycl_{HU} that had stayed three years in Hungary before cycling. The highest protein content and grain protein yield was achieved by the cycling control (CCYQ-Cycl. Ctr), which is a mixture of the two LI CCPs created and maintained in Germany since 2008 (Table 3).

The cycling populations differed in yield, height, number of ears/m², TKW and for heading date under organic conditions. The population Cycl_{UK}, that had stayed three extra years in the UK from 2005 to 2008 was significantly shorter than the other two cycling populations. The population Cycl_{HU} that had been in Hungary for three extra years produced significantly fewer head bearing tillers and higher TKW than the other two cycling populations (Table 3).

No differences concerning yield stability and stability of protein contents among populations with different evolutionary history could be detected (data not shown).

Discussion

Yields in the conventional trials were in the range of the mean yields achieved in Germany during 2016 and 2017 for conventional agriculture, while yields in the organic trials slightly exceeded the current average organic yields in Germany, high amount to approx. 3.6 t/ha, (BMEL 2019) Organic crops depend on optimal conditions with respect to soil water and temperature for nutrient mineralization. The poor performance of the organic trials in 2016 was in part due to the extremely dry 2014/15 season and the subsequent water deficit, which resulted in low overall mineralisation.

Comparison among groups

Overall, the composite cross populations performed similar in yield to the organically and conventionally bred baking cultivars under organic conditions. Under conventional conditions, the populations were higher yielding than the organically bred cultivars. Grain protein content of the CCPs were similar to that of the conventionally bred cultivars, but one percentage point less than those bred for organic conditions. In addition, the CCPs performed considerably better than the inbred lines extracted. The similarity of the yields of the populations to the organic and conventionally bred cultivars is remarkable, as the populations were generated from genetic materials from 1934 to 2000 that had been chosen for adaptation to low-input environments (Jones et al. 2010) and comprising of many parents bred in the UK, which are not fully adapted to the environmental conditions of Germany. Clearly, it was not expected that yields of the bread quality and feed quality cultivar groups be comparable.

The HI and LI populations included in these trials had been grown in Neu-Eichenberg for 10 generations and were in the F₁₅ (2015/16) and F₁₆ (2016/17). During these years and up to the F₁₈, yields under organic conditions were similar to that of the conventionally bred cultivars ‘Capo’ and ‘Achat’ but under conventional conditions, ‘Capo’ outyielded the populations (Weedon and Finckh 2019, 2021) and was highly stable (Weedon and Finckh 2021). This is in accordance with older results on other populations, where yields were found to be stable or tended to increase over generations (Suneson 1956; Qualset 1968; Allard and

Table 3 Grain yield and other parameters by Genotype and evolutionary environment

	Yield	TKW	Ears/m ²	Seeds/Ear	Protein content (%)	Protein yield (kg/ha)	Ground cover wheat	Heading of year	Heading (day)	Height (cm)	Heading org	Heading conv
Average values per group												
Broadcast (BC)	5.64	41.4	406	31.2	11.94	693	30.8	151.33	101.6	101.6	151.8	151.1
Cycling Control (CC)	5.76	41.8	407	31.5	12.21	756	31.3	150.53	101.6	101.6	151.7	149.9
High-input (HI)	5.73	41.5	412	31.5	12.05	712	31.4	150.92	104.7	104.7	151.7	150.5
Low-input (LI)	5.71	41.6	407	31.2	12.02	708	31.4	150.66	102.5	102.5	151.5	150.2
Cycl _{UK}	5.87	40.4	427	31.1	11.77	713	31.2	150.47	98.6	98.6	152	150.2
Cycl _{DE}	5.69	41.0	419	30.8	11.93	702	31.3	150.94	101.3	101.3	152.4	150.3
Cycl _{HU}	5.7	42	396	31.9	11.79	689	31.7	150.78	102.6	102.6	151.3	149.8
Results of ANOVA (<i>F</i> -values)												
Genotype G	3.35	2.60	2.42	0.92	2.00	2.55	0.45	2.93	4.76	4.76	1.10	0.000
System S	21.49	0.06	1.38	8.35	13.17	38.70	0.53	0.09	1.81	1.81	-	-
Fertilization F	34.52	0.28	14.97	7.05	10.32	28.48	5.17	0.03	15.26	15.26	0.01	0.888
G × S	0.44	1.77	0.83	1.45	1.72	0.48	0.51	3.39	1.18	1.18	-	-
G × F	0.71	0.28	0.47	0.17	0.56	0.56	1.62	0.95	1.11	1.11	0.94	0.252
S × F	5.65	26.69	1.59	0.66	0.00	5.47	0.72	0.00	0.66	0.66	-	-
G×S×F	1.00	0.54	0.88	0.86	0.76	0.58	0.41	0.59	0.64	0.64	-	-
Results of ANOVA (<i>p</i> values)												
Genotype G	0.00	0.01	0.01	0.51	0.04	0.01	0.91	0.00	0.00	0.00	0.363	0.000
System S	0.00	0.29	0.29	0.03	0.01	0.00	0.50	0.78	0.23	0.23	-	-
Fertilization F	0.00	0.60	0.00	0.01	0.00	0.00	0.03	0.86	0.00	0.00	0.912	0.888
G × S	0.92	0.07	0.59	0.17	0.08	0.89	0.87	0.00	0.31	0.31	-	-
G × F	0.70	0.98	0.89	1.00	0.83	0.83	0.11	0.48	0.36	0.36	0.944	0.252
S × F	0.03	0.00	0.22	0.42	0.99	0.03	0.40	0.99	0.43	0.43	-	-
G × S × F	0.44	0.85	0.55	0.57	0.65	0.82	0.93	0.81	0.76	0.76	-	-
Contrasts (<i>p</i> values)												
LI vs HI	0.766	0.730	0.499	0.572	0.657	0.645	0.960	0.077	0.008	0.008	0.282	0.147
LI vs BC	0.143	0.457	0.764	0.843	0.255	0.067	0.205	0.000	0.253	0.253	0.502	0.000
HI vs BC	0.078	0.690	0.331	0.446	0.114	0.022	0.224	0.074	0.000	0.000	0.687	0.001
Cycl _{UK} vs. Cycl _{DE}	0.073	0.104	0.493	0.625	0.118	0.488	0.869	0.016	0.022	0.022	0.014	0.455
Cycl _{UK} vs. Cycl _{HU}	0.054	0.000	0.001	0.300	0.881	0.049	0.501	0.121	0.001	0.001	0.023	0.709
Cycl _{DE} vs. Cycl _{HU}	0.898	0.028	0.007	0.127	0.157	0.205	0.612	0.387	0.239	0.239	0.849	0.263
Cycl _{DE} vs CC	0.855	0.462	0.680	0.658	0.479	0.992	0.809	0.001	0.800	0.800	0.569	0.000

Mean values and results of the ANOVA and contrast analysis. For heading date, means of organic and conventional testing environments are reported separately, since a significant interaction of farming system (S) and Evolutionary environment could be detected

Adams 1969; Jain and Qualset 1976; Danquah and Barrett 2002). Compared to their parents or parental mixtures the CCPs outyielded them when tested (Brumlop et al. 2017; Döring et al. 2015; Finckh et al. 2009; Weedon and Finckh 2021). Similar results with other wheat populations were obtained by Goldringer et al. (2001). This suggests that populations can be considered as an alternative to inbred cultivars, both in organic and conventional agriculture, if based on parent cultivars with a high performance. However, our experiments are not representative of environments with very favorable growth conditions typical for oceanic climates in northern Germany, where yields of more than 10 t/ha are possible.

Crop density (i.e. the number of spikes m^{-2}) was highest in populations both in comparison with commercial cultivars and the inbred lines extracted from the populations under organic conditions. Corresponding to this, grain and spike weights were lower. The same could be observed for ground cover during tillering, where the difference between populations and inbred lines was particularly notable. Early development in the field and ground cover correlate well with root development where the CCPs have been shown to outperform most pure lines (Vijaya Bhaskar et al. 2019a) and organically evolved CCPs outperformed conventionally evolved ones (Bertholdsson et al. 2016; Vijaya Bhaskar et al. 2019b). Through the advantage of genetic diversity for adaptation and the combination of different genotypes, the CCPs appear to be better able to use the available space and resources than homogeneous stands of single lines. Possible benefits are higher wheat biomass and consequently yield, improved organic matter supply to the soil (Simon et al. 2019), as well as improved weed suppression (Finckh et al. 2018).

Yield vs. grain protein content

The strong negative correlations under both management systems between yield and grain protein content observed in our trials (Fig. 2) are not unusual. Since there is also a positive correlation of yield and protein yield, there is not purely a dilution effect (Simmonds. 1995). Breeding has exploited this correlation in order to develop higher yielding cultivars while tolerating lower protein contents (Voss-Fels et al. 2019). In the case of baking wheat, this has in part been compensated with better gluten

quality (Laidig et al. 2017). For baking quality cultivars, breeding aims at increasing yields while keeping the protein content of the grain as high as possible. The breeding objective would therefore ideally be to break the above-mentioned correlation, i.e. to increase cultivar deviation from the regression line of protein content on yield (as shown in Fig. 2) that has been termed 'grain protein deviation' (GPD) by Monaghan et al. (2001). A marked positive GPD is evident for the organically bred cultivars under both management systems and 'Genius' under organic conditions, while the GPD was considerably lower in the conventionally managed trials (Fig. 2). Thus, for certain cultivars and under certain conditions it is possible to break this correlation.

The ability of the plants to take up nitrogen in the period before flowering and to transfer it to the grain during the grain filling phase, coupled with N uptake during the grain filling phase, which is largely dependent on N availability during this period, are two decisive factors for grain protein content (Baresel et al. 2008). According to Bogard et al. (2010), post-anthesis N uptake is crucial for a high GDP in wheat under relatively high input conditions. In environments with more limited late N availability, Nehe et al. (2020) found pre-anthesis N uptake and the efficiency of its translocation to be more important. In conventionally managed environments, N supply during grain filling is less affected by plant genotype since differences between genotypes are masked by the high N availability. In organically managed environments, N is often lacking during the grain filling period and post-anthesis N uptake is more dependent on the plant genotype, which may explain, why the GDP of cultivars selected under these conditions is often higher.

Taking this into account, we conclude that selection under near-optimum conditions may not lead to optimum cultivar selection for organic or low-input systems due to the fact that the negative correlation between yield and protein content and the possibilities to deviate from it through increasing GPD values, strongly depends on selection in different environmental conditions. Moreover, the intrinsic diversity of populations does not contribute to greater GPD. For this reason, increasing GPD in heterogeneous populations is strongly dependent on parental cultivar choice and performance under different environmental

Table 4 Leaf diseases of populations and isolated lines: major diseases in the respective trial and infected leaf area in percent

Year	Location	Management	Major diseases	Lines	Populations	Ratio (%)	<i>p</i>
2016	Neu-Eichenberg (NE)	Organic	Yellow Rust, DTR	31.7	16.7	190	0.00
	Viehhausen (VH)	Organic	Yellow Rust	13.9	8.1	172	0.06
	Quedlinburg (QB)	Conventional	DTR, Septoria	10.9	15.4	71	0.00
	Dürnast (DN)	Conventional	DTR, Septoria	3.9	4.5	87	0.14
2017	Neu-Eichenberg (NE)	Organic	Yellow and Brown Rust	14.3	11.3	127	0.02
	Viehhausen (VH)	Organic	Yellow and Brown Rust	12.8	7.3	175	0.00
	Quedlinburg (QB)	Conventional	DTR, Septoria	7.4	9.7	76	0.00
	Dürnast (DN)	Conventional	DTR, Septoria	5.8	5.7	102	0.68

p values refer to the difference between groups. Check table S1 for details on the locations

conditions, as is the case for increasing yield and grain protein potential (Döring et al. 2011, 2015).

Role of diversity for performance

The superiority of the CCPs over the inbred lines extracted from them was more evident in the organic than in the conventional trials where fungicides were used to control foliar diseases. Under organic conditions, when no fungicides were used, the CCPs were always considerably healthier presumably due to their resistance diversity. However, even in the trials with low leaf infestation where the populations were similarly or slightly more affected by foliar diseases, yields of populations were higher. Thus, greater tolerance to foliar pathogens is not the only benefit gained from diversity, but there must be other factors of importance.

Certain morphological characteristics are considered a main factor for high yield potential in wheat cultivars. Besides harvest index, particular importance is given to competitive ability. It has been considered, that *h* in wheat as a “community plant” this should be kept low. The resulting ideotype in pure line breeding is therefore low in stature, scarcely tillering and possesses short, erect leaves (Donald 1968). Plant types with higher competitive ability are considered less suitable, at least for high-input-conditions, because all plants compete for the same resources and may thus suppress each other.

In the case of heterogeneous populations, with a range of morphological and phenological characteristics, each individual occupies a different niche, leading to a certain degree of complementarity. This would allow for denser canopies and more complete

ground cover, which was observed in our field experiments. Therefore, the negative effect of more competitive ideotypes is alleviated, if a certain degree of diversity is present in the canopies. Diversification may therefore be considered an alternative or supplementary way to achieve higher crop densities, in addition (or alternatively) to ideotypes with low competitive ability. As the overall competitive ability of such diversified canopies is higher, this results in the observed improved weed suppressiveness (Finckh et al. 2018).

Several new yellow rust races have emerged after 2010 in Europe affecting many of the current cultivars (Hovmøller et al. 2016) including ‘Kerubino’ in our trials. Some of the parents of the CCPs carried resistances against these new races just like most of the pure line cultivars, but also against the brown rust races present during their evolution in Neu-Eichenberg (Weedon and Finckh 2021). This diversity in resistances has provided the CCPs with advantages over a number of tested cultivars. The pure lines were extracted from the CCPs in the UK in 2007, which meant that they were selected before exposure to the new yellow rust races. In addition, results from our trials indicate that most of them did not carry the relevant yellow rust resistances and were as susceptible as ‘Kerubino’ on average. Thus, highly diverse populations are a valuable and durable alternative to resistance breeding based on single resistance genes, especially if parental cultivar choices include diversity for disease resistances.

Under conventional conditions where *Zymoseptoria tritici* and *Drechslera tritici-repentis* were the prevailing pathogens, the populations performed similarly to all other entries with a maximum of 4.5

percentage points greater NGLA value, which is biologically not significant (Table 4). Although canopy architecture diversity generally decreases splash dispersed diseases (Vidal et al. 2017, 2018), the higher crop density of the populations may have led to higher canopy moisture and to higher disease conduciveness.

Role of diversity for stability and adaptation

While the commercial cultivars with the highest yields were able to exploit their potential primarily in environments with high yield potential, the cultivars bred for organic farming proved to be cultivars for low input conditions. The fact that the populations achieved yields that ranged between both the conventionally and organically bred cultivars combined with high dynamic stability, points to their wider adaptation to fluctuating environmental conditions. In contrast to the organically bred cultivars, the adaptation of the populations was not limited to low-input conditions or organic farming, but they were generally well adapted to the conventionally managed environments as well. However, our study lacks environments, where extremely high yields of more than 9 t/ha are possible; consequently, we do not know, whether the populations are also adapted to this type of environments.

The stability of the CCPs was in contrast to the extracted random inbred lines, which were clearly better adapted to HI-conditions as can be seen by their relative yields in the 16 environments, though highly divergent in their performance and with low overall yields. The marked difference in yield stability of populations and isolated inbred lines shows that the higher stability of the populations is due to their diversity, not their genetic background. The findings are in accordance with results of Döring et al. (2015) and Weedon and Finckh, (2019). We can therefore conclude, that higher diversity is an appropriate way to improve overall adaptation and stability to different site conditions.

In our studies, the differences among environments were mainly caused by local factors and different crop management (fertilization levels and farming system). The results are therefore primarily valid for the adaptation to local conditions and cultivation measures.

However, comparing the adjusted means of the single genotypes or population between the two years, we could note, that the distance was lowest in the

populations (154 kg/ha in average), followed by the organic varieties (225 kg/ha), the varieties with high baking quality (291 kg/ha), the random inbred lines (328 kg/ha) and finally the feed varieties (700 kg/ha), the same ranking, which has also been observed in the stability parameters over all environments. Performing the analysis represented in in Fig. 5 for each year individually instead of over both years, similar, though less marked effects could be observed (data not shown). In addition, high resilience of the CCPs with respect to water availability, abiotic stresses and disease pressure in one site has been documented over 13 generations in previous field trials (Weedon and Finckh 2021). We may therefore conclude, that Populations are also more stable over years, not only over locations or different systems of crop management.

In our studies, the differences among environments were mainly caused by local factors and different crop management (fertilization levels and farming system). The results are therefore primarily valid for the adaptation to local conditions and cultivation measures. Nevertheless, high resilience of the CCPs with respect to water availability, abiotic stresses and disease pressure in one site has been documented over 13 generations (Weedon and Finckh 2021).

We conclude, that using more genetically diverse material can be considered an alternative to cultivars consisting of single inbred lines, which can contribute to improved yield stability, if appropriate parental material is used. Moreover, we found that the use of populations is not limited to low-input or organic farming systems, but in contrast to the cultivars bred for organic farming, CCPs show a wider adaptation to a broad range of environments.

Evidence for evolution and adaptation to specific environments

We could show that populations having evolved under different conditions differed for several agronomic traits. Since population sizes were large enough to avoid genetic drift (Brumlop et al. 2019), and since two parallel populations have been examined in three cases (with exception of the populations Cycl_{HU}, Cycl_{DE} and Cycl_{UK} and CCYQ-Cycl.Ctr, see Table S1), these differences are evidence for adaptation to the specific environments. However, no specific adaptations to either organic or conventional

environments or either high- or low-N-fertilization were evident.

Changes in early root and shoot development of the HI and LI CCPs over time have been demonstrated under controlled conditions, with these shoot and root measurements correlating with early soil cover in our field trials in NEB (Vijaya Bhaskar et al 2019a). An earlier comparison for yield effects among populations with different histories was also inconclusive (Brumlop et al. 2017). It has also been documented that in the first generations when the populations were still only growing in the UK, genotypes carrying *Rht*-genes for reduced height had been strongly reduced without negative yield effects (Knapp et al. 2020). Similar observations were reported by Goldringer et al (2001) in other wheat populations. For conventional environments with particularly high yield potential (more than 8 t/ha), this might increase the risk of lodging and require higher doses of growth regulators. Additional comparisons of the F₁₇ with earlier generations show, that evolutionary changes did not result in yield changes over time (Baresel et al. unpublished), in line with other studies that either report increasing or stagnating yields, but never yield decreases over generations in evolving populations (Suneson 1956; Allard 1961, 1990; Jain and Qualset 1976; McDonald et al. 1989; Danquah and Barrett 2002).

A concern that has been raised with respect to the use of populations in dynamic management, is that favouring of more competitive plant types should lead to yield depression due to natural selection (Denison 2012). Natural selection favours genotypes with higher seed production of individual plants. If all genotypes compete for exactly the same resources, this would result in the reduction of productivity of other, competing genotypes. This would be expected, if there were little diversity within the population concerning specific resource efficiency and if there were no diversity in resource availability within a field, such as if all available resources were already exploited, i.e. the genotypes were perfectly adapted to the respective environments and if no outcrossing occurred. Clearly, it is highly unlikely that these conditions can be met. If there are unexploited niches and if genotypes differ in their response to specific resource acquisition, production per plant coincides with better exploitation of non- or underexploited resources/niches, without reducing seed production

of plants belonging to other genotypes. This would lead to differentiation within the population, and might lead to higher total yields. Such a development would ideally occur if there is a high genetic variability within the population and if there are many unexploited niches. Beside maintaining their yield level, the CCPs have maintained high genetic diversity through the maintenance of plot sizes large enough to limit genetic drift (Brumlop et al. 2019), as well as outcrossing in wheat which regularly takes place. Thus, the populations maintained a high degree of diversity, which was also reflected in the wide range of morphological characteristics in the randomly extracted lines. Consequently, the populations most likely consist of members differing in their specific resource use efficiency and adaptive capacity, which allows for greater resilience in variable environmental conditions within and among years where different genotypes will be more successful depending on the prevalent conditions. In the long-term, this would lead to an equilibrium between differently adapted genotypes, potentially increasing yield stability over time and, as well as maintaining grain yields.

Conclusions

From our results and in conjunction with the literature reviewed, we conclude, that populations have an interesting, currently neglected potential to improve the resilience of agricultural systems:

- Populations may be considered an alternative to inbred lines under organic and low to moderately high input conditions providing good foliar disease resistance, which in turn will reduce pesticide inputs in the long term. Parental varietal choice is critical when considering grain yield and protein content potential in differing environments, especially to improve breeding for greater grain protein deviation (GPD).
- The diversity of pathogen resistances found in populations means that they may not be so susceptible to “ageing effects” in comparison to inbred cultivars, particularly due the loss of resistances due to the appearance of new, virulent strains of pathogens.
- Although there may be strong initial selection for single traits strongly influenced by major

genes, such as plant height or phenology, populations remain stable in the long term; selection towards competitive types does not necessarily result in yield decrease due to possible trade-off effects; a possible explanation is niche differentiation and complementarity, resulting in higher overall crop densities.

- Yield and protein content stability tend to be higher in populations than in pure lines. In addition, the considerable effort required for maintenance breeding of inbred cultivars is avoided.
- Crop density and consequently, weed suppression, ground cover density and biomass during tillering tend to be higher in populations than in inbred lines resulting in the reduced need for herbicides.

Our recommendation based on the results of these trials would be to encourage the development and the use of populations in practical agriculture as stipulated by the new EU organic regulation 2018/1519 particularly for use in organic and low-input systems. However, there is no reason to restrict such effects to organic farming systems. Additionally, this should be accompanied by multisite studies in order to further assess yield stability of a range of populations with differing genetic background, as well as the socio-economic impact relating to the introduction of heterogeneous populations. We want to further stress the point that populations should not be seen as a random product but that parental variety choice is vital to the success of population performance. Populations do not require less breeding effort than line cultivars and may in fact be even more challenging due to the lack of long-term experience on suitable breeding methods, parental choice and combing ability, all of which need further development. Research into the optimization of parental variety choice for the establishment of heterogeneous populations, as well as population improvement through admixing of new materials in order to optimize yield and yield stability is essential.

Acknowledgements This research project has been supported by the German Federal Ministry of Education and Research (BMBF) (Grant No: 031A350) in the framework of the project “INSUSFAR” (INnovative approaches to optimize genetic diversity for SUStainable FARming systems of the future).

Funding Open Access funding enabled and organized by Projekt DEAL.

Declarations

Conflict of interest The authors declare no competing interests, that are directly or indirectly related to the work submitted for publication.

Open Access This article is licensed under a Creative Commons Attribution 4.0 International License, which permits use, sharing, adaptation, distribution and reproduction in any medium or format, as long as you give appropriate credit to the original author(s) and the source, provide a link to the Creative Commons licence, and indicate if changes were made. The images or other third party material in this article are included in the article’s Creative Commons licence, unless indicated otherwise in a credit line to the material. If material is not included in the article’s Creative Commons licence and your intended use is not permitted by statutory regulation or exceeds the permitted use, you will need to obtain permission directly from the copyright holder. To view a copy of this licence, visit <http://creativecommons.org/licenses/by/4.0/>.

References

- Allard R (1961) Relationship between genetic diversity and consistency of performance in different environments. *Crop Sci* 1(127):133
- Allard RW (1990) The genetics of host-pathogen coevolution: implications for genetic resource conservation. *J. Hered* 81:1–6
- Allard RW, Adams J (1969) Population studies in predominantly self-pollinating species. xiii. Intergenotypic competition and population structure in barley and wheat. *Am Nat* 103(934):621–645
- Annicchiarico P (2002) Genotype × environment interactions: challenges and opportunities for plant breeding and cultivar recommendations, vol 174. Food and Agriculture Organization of the United Nations, Rome
- Baltazar S, Boutsen R (2019) Questioning seeding rates and its influence on phenotypic expression of wheat populations for participatory plant breeding first findings from field research across organic farms in Belgium and the Netherlands. *Org Farming* 5:37–51
- Baresel JP, Zimmermann G, Reents HJ (2008) Effects of genotype and environment on N uptake and N partition in organically grown winter wheat (*Triticum aestivum* L.) in Germany. *Euphytica* 163:347–354
- Barot S, Allard V, Cantarel A, Enjalbert J, Gauffreteau A, Goldringer I, Lata JC, Le Roux X, Niboyet A, Porcher E (2017) Designing mixtures of varieties for multifunctional agriculture with the help of ecology. A review. *Agron Sustain Dev* 37:1–20
- Bates D, Mächler M, Bolker B et al (2015) Fitting linear mixed-effects models using lme4. *J Stat Softw* 67(1):1–48

- Bertholdsson N, Weedon O, Brumlop S et al (2016) Evolutionary changes of weed competitive traits in winter wheat composite cross populations in organic and conventional farming systems. *Eur J Agron* 79:23–30
- BMEL (2019) Die wirtschaftliche Lage der Landwirtschaftlichen Betriebe 2018/19: Buchführungsergebnisse Landwirtschaft. Bundesministerium für Ernährung und Landwirtschaft, Bonn
- Bocci R, Bussi B, Petitti M, Franciolini R, Altavilla V, Galluzzi G, Di Luzio P, Migliorini P, Spagnolo S, Floriddia R, Rosi GL, Petacciato M, Battezzato V, Albino A, Faggio G, Arcostanzo C, Ceccarelli S (2020) Yield, yield stability and farmers preferences of evolutionary populations of bread wheat: A dynamic solution to climate change. *Eur J Agron* 121:126156
- Bogard M, Allard V, Brancourt-Hulmel M, Heumez E, Machet J-M, Jeuffroy M-H, Gate P, Martre P, Le Gouis J (2010) Deviation from the grain protein concentration–grain yield negative relationship is highly correlated to post-anthesis N uptake in winter wheat. *J Exp Bot* 61(15):4303–4312
- Bonnin I, Bonneuil C, Goffaux R et al (2014) Explaining the decrease in the genetic diversity of wheat in France over the 20th century. *Agric Ecosyst Environ* 195(183):192
- Brooker RW, George TS, Homulle Z, Karley AJ, Newton AC, Pakeman RJ, Schöb C (2021) Facilitation and biodiversity–ecosystem function relationships in crop production systems and their role in sustainable farming. *J Ecol* 109(5):2054–2067
- Brumlop S, Pfeiffer T, Finckh MR (2017) Evolutionary effects on morphology and agronomic performance of three winter wheat composite cross populations maintained for six years under organic and conventional conditions. *Org Farming* 3(34):50
- Brumlop S, Weedon O, Link W, Finckh MR (2019) Effective population size (N_e) of organically and conventionally grown composite cross winter wheat populations depending on generation. *Eur J Agron* 109:125922
- Ceccarelli S, Grandó S (2020) Evolutionary plant breeding as a response to the complexity of climate change. *Isience* 23(12):101815
- Danquah E, Barret J (2002) Grain yield in composite cross five of barley: effects of natural selection. *J Agricul Sci* 138:171–176
- Dawson JC, Huggins DR, Jones SS (2008) Characterizing nitrogen use efficiency in natural and agricultural ecosystems to improve the performance of cereal crops in low-input and organic agricultural systems. *Field Crop Res* 107(2):89–101
- Denison RF (2012) Darwinian agriculture. How understanding evolution can improve agriculture. Princeton University Press, Princeton
- Donald CM (1968) The breeding of crop ideotypes. *Euphytica* 1968(17):385–403
- Döring TF, Knapp S, Kovacs G, Murphy K, Wolfe MS (2011) Evolutionary plant breeding in cereals—into a new era. *Sustainability* 3(10):1944–1971
- Döring TF, Annicchiarico P, Clarke S, Haigh Z, Jones HE, Pearce H, Snape J, Zhan J, Wolfe MS (2015) Comparative analysis of performance and stability among composite cross populations, variety mixtures and pure lines of winter wheat in organic and conventional cropping systems. *Field Crops Res* 183:235–245
- Eberhart ST, Russell WA (1966) Stability parameters for comparing varieties 1. *Crop Sci* 6(1):36–40
- Ekbohm G (1981) A test for the equality of variances in the paired case with incomplete data. *Biom J* 23(3):261–265
- Finckh MR, Wolfe MS (2015) Biodiversity enhancement. In: Finckh MR, Van Bruggen AH, Tamm L (eds) Plant diseases and their management in organic agriculture. APS, St. Paul, pp 153–174
- Finckh M, Gacek E, Goyeau H, Lannou C, Merz U, Mundt C et al (2000) Cereal variety and species mixtures in practice, with emphasis on disease resistance. *Agronomie* 20(7):813–883
- Finckh M, Brumlop S, Goldringer I, Steffan P, Wolfe MS (2009) Maintenance of diversity in naturally evolving composite cross wheat populations in Europe. In: Collected papers of the 1st IFOAM conference on organic animal and plant breeding. Tholey-Theley, pp. 145–152
- Finckh MR, Junge SM, Schmidt JH, Weedon OD (2018) Disease and pest management in organic farming: a case for applied agroecology. In: Köpke U (ed) Improving organic crop cultivation, vol 1. Burleigh Dodds, Cambridge, pp 271–301
- Finlay K, Wilkinson G (1963) The analysis of adaptation in a plant-breeding programme. *Aust J Agric Res* 14(6):742–754
- Goldringer I, Paillard S, Enjalbert J, David JL, Brabant P (1998) Divergent evolution of wheat populations conducted under recurrent selection and dynamic management. *Agronomie* 18(5–6):413–425
- Goldringer I, Enjalbert J, David J et al (2001) Dynamic management of genetic resources: a 13-year experiment on wheat. In: Cooper HD, Spillane C, Hodgkin T (eds) Broadening the genetic base of crop production. IPGRI/FAO, Rome, pp 245–260
- Heisey P, Day-Rubenstein K (2015) Using crop genetic resources to help agriculture adapt to climate change: economics and policy. *USDA-ERS Economic Information Bulletin* (139)
- Hovmøller M, Walter S, Bayles R et al (2016) Replacement of the European wheat yellow rust population by new races from the centre of diversity in the near-Himalayan region. *Plant Pathol* 65:402–411
- Jain SK, Qualset CO (1976) Barley genetics III. In: Proceedings of the third international barley genetics symposium, Garching 1975
- Jones H, Clarke S, Haigh Z et al (2010) The effect of the year of wheat variety release on productivity and stability of performance on two organic and two non-organic farms. *J Agric Sci* 148:303–317
- Juroszek P, Von Tiedemann A (2013a) Climate change and potential future risks through wheat diseases: a review. *Eur J Plant Pathol* 136:21–33
- Juroszek P, Von Tiedemann A (2013b) Plant pathogens, insect pests and weeds in a changing global climate: a review of approaches, challenges, research gaps, key studies and concepts. *J Agric Sci* 151(2):163–188
- Knapp S, Doering TF, Jones HE et al (2020) Natural selection towards wild type in composite cross populations of winter wheat. *Front Plant Sci* 10:1757

- Kuznetsova A, Brockhoff PB, Christensen RHB (2017) lmerTest package: tests in linear mixed effects models. *J Stat Softw* 82(13):1–26
- Laidig F, Piepho HP, Drobek T, Meyer U (2014) Genetic and non-genetic long-term trends of 12 different crops in German official variety performance trials and on-farm yield trends. *Theor Appl Genet* 127(12):2599–2617
- Laidig F, Piepho HP, Rentel D, Drobek T, Meyer U, Huesken A (2017) Breeding progress, environmental variation and correlation of winter wheat yield and quality traits in German official variety trials and on-farm during 1983–2014. *Theor Appl Genet* 130(1):223–245
- Lenth RV (2016) Least-squares means: the R package lsmeans. *J Stat Softw* 69(1):1–33
- McDonald BA, McDermott JM, Allard RW, Webster RK (1989) Coevolution of host and pathogen populations in the *Hordeum vulgare-Rhynchosporium secalis* pathosystem. *Proc Natl Acad Sci* 86(10):3924–3927
- Mohammadi R (2018) Breeding for increased drought tolerance in wheat: a review. *Crop Pasture Sci* 69(223):241
- Monaghan JM, Snape JW, Chojecki AJS, Kettlewell PS (2001) The use of grain protein deviation for identifying wheat cultivars with high grain protein concentration and yield. *Euphytica* 122(2):309–317
- Murphy K, Carter A, Jones S (2013) Evolutionary breeding and climate change. In: Kole C (ed) *Genomics and breeding for climate-resilient crops*, vol 1. Springer, Berlin, pp 377–389
- Mwadingeni L, Shimelis H, Dube E et al (2016) Breeding wheat for drought tolerance: progress and technologies. *J Integr Agric* 15(5):935–943
- Nehe AS, Misra S, Murchie EH, Chinnathambi K, Tyagi BS, Foulkes MJ (2020) Nitrogen partitioning and remobilization in relation to leaf senescence, grain yield and protein concentration in Indian wheat cultivars. *Field Crop Res* 251:107778
- OSS (2020) Winterweizen “EQuality.” Open Source Seeds. <https://www.opensourceseeds.org/saatgut/winterweizen-equality>. Accessed 20Feb 2022
- Qualset CO (1968) Population structure and performance in wheat. In: Finlay K, Sheperd K (eds) *Third international wheat genetics symposium*. Australian Academy of Science
- R Core Team (2020) R: a language and environment for statistical computing. R Foundation for Statistical Computing, Vienna. <https://www.R-project.org/>
- Schmidt J, Weedon O, Finckh MR (2018) Management histories of wheat composite cross populations (CCPs) drive yield in two tillage systems. In: Bacanovic-Sisic J, Denenmoser D, Finckh M (eds) *Symposium on breeding for diversification: a joint meeting of the EUCARPIA section organic and low-input agriculture, ECO-PB, and the projects LIVESEED, INSUSFAR, DIVERSify, Healthy Minor Cereals, ReMIX and Wheatamix*. Kassel University Press, Witzenhausen, Germany, pp 48–50
- Shukla G (1972) Some statistical aspects of partitioning genotype environmental components of variability. *Heredity* 29(237):245
- Simmonds NW (1995) The relation between yield and protein in cereal grain. *J Sci Food Agric* 67(3):309–315
- Simon R, Reents H (2019) Greenhouse gas emissions of diverse wheat populations vs. cultivars. In: Messean A, Drexler D, Heim I, Paresys L et al (eds) *First European conference on crop diversification September 18–21, 2019, Budapest*. INRA and MKI, Budapest, pp 232–233
- Suneson C (1956) An evolutionary plant breeding method. *Agronomy* 143:188–191
- Tsujimoto H, Sohail Q, Matsuoka Y (2015) Broadening the genetic diversity of common and durum wheat for abiotic stress tolerance breeding. In: Ogihara Y, Takumi S, Handa H (eds) *Advances in wheat genetics: from genome to field; proceedings of the 12th international wheat genetics symposium, Yokohama, Japan*, pp 223–238
- Vidal T, Boixel AL, Durand B, de Vallavieille-Pope C, Huber L, Saint-Jean S (2017) Reduction of fungal disease spread in cultivar mixtures: Impact of canopy architecture on rain-splash dispersal and on crop microclimate. *Agric For Meteorol* 246:154–161
- Vidal T, Gigot C, de Vallavieille-Pope C, Huber L, Saint-Jean S (2018) Contrasting plant height can improve the control of rain-borne diseases in wheat cultivar mixture: modelling splash dispersal in 3-D canopies. *Ann Bot* 121(7):1299–1308
- Vijaya Bhaskar A, Baresel J, Weedon O et al (2019a) Effects of ten years organic and conventional farming on early seedling traits of evolving winter wheat composite cross populations. *Sci Rep* 9:9053
- Vijaya Bhaskar A, Weedon O, Finckh MR (2019b) Exploring the differences between organic and conventional breeding in early vigour traits of winter wheat. *Eur J Agron* 105(86):95
- Voss-Fels KP, Stahl A, Wittkop B, Lichthardt C, Nagler S, Rose T, Chen T-W, Zetzsche H, Seddig S, Baig MM, Ballvora A, Frisch M, Ross E, Hayes BJ, Hayden MJ, Ordon F, Leon J, Kage H, Friedt W, Stützel H, Snowdon RJ (2019) Breeding improves wheat productivity under contrasting agrochemical input levels. *Nat Plants* 5(7):706–714
- Weedon O (2018) Using crop genetic diversity to improve resilience: agronomic potential of evolutionary breeding under differing management systems. PhD thesis, Kassel University
- Weedon O, Finckh M (2019) Heterogeneous winter wheat populations differ in yield stability depending on their genetic background and management system. *Sustainability* 11:6172
- Weedon OD, Finckh MR (2021) Response of wheat composite cross populations to disease and climate variation over 13 generations. *Front Agric Sci Eng* 8(3):400–415
- Weedon O, Brumlop S, Heinrich S (2016) Agronomic performance of two generations (f12 and f13) of thirteen winter wheat composite crosswheat populations with differing cultivation histories in 2014/15. In: Kölliker R, Boller B (eds) *Plant breeding: the art of bringing science to life*. Abstracts of the 20th EUCARPIA General Congress, 29 August–1 September 2016. Agroscope, Zürich, Switzerland

Publisher’s Note Springer Nature remains neutral with regard to jurisdictional claims in published maps and institutional affiliations.