

Screening of pepper accessions for resistance against two thrips species (*Frankliniella occidentalis* and *Thrips parvispinus*)

Awang Maharijaya · Ben Vosman · Greet Steenhuis-Broers ·
Asep Harpenas · Agus Purwito · Richard G. F. Visser ·
Roeland E. Voorrips

Received: 27 August 2010 / Accepted: 27 September 2010 / Published online: 15 October 2010
© The Author(s) 2010. This article is published with open access at Springerlink.com

Abstract Thrips are damaging pests in pepper worldwide. They can cause damage directly by feeding on leaves, fruits or flowers, and also indirectly by transferring viruses, especially tomato spotted wilt virus (TSWV). Although thrips are among the most damaging pests in pepper, until now there is no commercial variety with a useful level of resistance to thrips. This is at least partly due to the lack of knowledge on resistance levels in pepper germplasm of QTLs and/or genes for resistance, and of information about resistance mechanisms to thrips in pepper. This paper describes our research aimed at developing practical and reliable screening methods for thrips resistance in pepper and at identifying pepper accessions showing a strong resistance to thrips. Thirty-two pepper accessions from four species of pepper (*Capsicum annuum*,

C. baccatum, *C. chinense* and *C. frutescens*) and two species of thrips (*Frankliniella occidentalis* and *Thrips parvispinus*) were used in this study. Our results indicate that the laboratory based leaf disc test and the detached leaf test can be used as reliable screening methods for thrips resistance in pepper. We observed a large variation for resistance to thrips in *Capsicum* that can be exploited in breeding programs.

Keywords *Capsicum* · In vitro test · Multiple resistance · Insect resistance

Introduction

Pepper (*Capsicum spp.*) is one of the most widely grown vegetables in the world and faces problems from thrips attack (Grubben and Denton 2004; Siemonsma and Piluek 1994). Thrips can cause damage on pepper directly by feeding on leaves, fruits or flowers. Feeding injury from thrips on leaves may affect leaf size, affect carbon allocation in the plant (Shipp et al. 1998; Welter et al. 1990) and reduce photosynthetic capacity (Tommasini and Maini 1995). Thrips also cause indirect damage by transmitting plant viruses of the *Tospovirus*, *Ilarvirus*, *Carmovirus*, *Sobemovirus*, and *Machlomovirus* genera (Jones 2005). One of the most important viruses transmitted by thrips in pepper is tomato spotted wilt virus (TSWV) (Ulman et al. 1992).

A. Maharijaya · B. Vosman · G. Steenhuis-Broers ·
R. G. F. Visser · R. E. Voorrips (✉)
Wageningen UR Plant Breeding, Wageningen University
and Research Center, P.O. Box 16, 6700 Wageningen,
The Netherlands
e-mail: roeland.voorrips@wur.nl

A. Maharijaya · A. Purwito
Bogor Agricultural University, Jalan Raya Darmaga,
16680 Bogor, Indonesia

A. Harpenas
East-West Seeds, P.O. Box 1, 41181 Campaka,
Purwakarta, Indonesia

At least 16 thrips species have been reported to occur on *Capsicum* (Capinera 2001; Talekar 1991). *Frankliniella occidentalis* is the most common thrips species on *Capsicum* in Europe (Tommasini and Maini 1995), while *Thrips parvispinus* is the main species in Indonesia, Malaysia, the Philippines, Thailand and Taiwan (Reyes 1994). On Java, Indonesia, *T. parvispinus* has been reported as a major pest of *Capsicum* (Prabaningrum and Suhardjono 2007; Vos and Frinking 1998).

Thrips are difficult to control because of their polyphagous nature and their high reproduction rate (Weintraub 2007). At moderate temperatures (20–25°C), *F. occidentalis* takes about 2–3 weeks to complete its life cycle, but at 30°C it may take less than 10 days (Tommasini and Maini 1995). Another factor that contributes to a rapid development of thrips is that their reproduction is facultatively parthenogenic (Brodsgaard 1989).

Controlling thrips using pesticides is difficult and not very effective because of their cryptic habit. They prefer enclosed areas such as buds, flowers, under the calyx of the fruits and in newly opening leaves (Jensen 2000; Weintraub 2007). In addition, they develop resistance to insecticides rapidly. Resistance to insecticides of three major classes: organophosphates, carbamates and pyrethroids has been reported (Bielza 2008; Herron and James 2005; Herron 2005; Jensen 2000). Nevertheless, pesticides are still widely used to control thrips. However, there is an increasing public demand for reduction of pesticide use and withdrawal of certain chemical compounds because of their harmful effects on growers, consumers and the environment (Dik et al. 2000).

As an alternative to the use of insecticides, integrated pest management (IPM) has been implemented in pepper (Weintraub 2007). However, solely relying on IPM is difficult when no varieties are available that are at least moderately resistant to thrips. In fact, the most effective way to eliminate the thrips problem would be the use of highly resistant varieties. Resistance to thrips may also delay and reduce the transmission of viruses as shown by Maris et al. (2003) for TSWV. However, resistant pepper varieties do not exist and are unlikely to become available soon.

Studies on thrips resistance in pepper are needed to support breeding programs aimed at developing thrips resistant varieties. As a first step pepper

accessions with an effective level of resistance to thrips need to be identified. This requires reliable and efficient methods to assess the resistance of accessions. Our study therefore has two objectives. The first objective is to develop and evaluate efficient phenotyping methods, which are needed for the screening of pepper lines and accessions. If such methods are to be of use in research and breeding they must be easy to conduct, accurate, reproducible, requiring little space, time, and energy. Several test methods have been described in the past including a leaf disc assay for thrips resistance in cucumber (Kogel et al. 1997), a detached leaf test for *Helicoverpa armigera* resistance in pea (Sharma et al. 2005) and a screen cage test for aphids resistance in sweet pepper (Pineda et al. 2007).

The second objective of our study is to identify accessions with different levels of thrips resistance (including highly resistant accessions) that can be used for studies aimed at elucidating the genetics of resistance against thrips.

Materials and methods

Plant material

Pepper accessions with possible resistance to thrips were selected on the basis of available literature (Fery and Schalk 1991; Maris et al. 2003) and supplemented with other accessions of various species and geographic origins; they were obtained from the Center of Genetic Resources, the Netherlands at Wageningen, the Netherlands; from Plant Research International, Wageningen and from PT East West Seed Indonesia (EWINDO), Purwakarta, Indonesia. In total, 32 pepper accessions from four species: *C. annuum*, *C. chinense*, *C. baccatum* and *C. frutescens* were used (Table 1).

Thrips species

Two species of thrips were used, *Frankliniella occidentalis* and *Thrips parvispinus*. *Frankliniella occidentalis* was selected as it is the most prevalent thrips species in European pepper cultivation (Tommasini and Maini 1995), while *T. parvispinus* was selected as representative of Asian thrips (Prabaningrum and Suhardjono 2007; Reyes 1994; Vos and Frinking 1998).

Table 1 Damage scores in screening methods of thrips resistance in pepper

Acc code	Accession name	<i>Thrips parvispinus</i>				<i>Frankliniella occidentalis</i>						
		Greenhouse ^a	Leaf disc ^a	Detached leaf ^a	Greenhouse ^a	Leaf Disc ^a	Detached Leaf ^a	Greenhouse ^a	Leaf Disc ^a	Detached Leaf ^a		
CGN16975	<i>C. annuum</i> AC 1979	0.2	0.3	0.0	0.3	a	0.3	a	0.2	a	0.6	abcd
CGN20503	<i>C. annuum</i> Bisbas	0.5	0.3	0.2	0.3	ab	0.2	a	1.1	bc	0.2	a
CGN23765	<i>C. annuum</i> CM 331	1.0	0.7	0.7	0.7	abc	0.7	ab	0.3	a	0.8	abcd
CGN21534	<i>C. annuum</i> Chili de Arbol								0.8	ab	1.0	bcde
CGN17042	<i>C. baccatum</i> no. 1553	1.0	0.0	0.6	0.0	a	0.6	ab	0.3	a	0.7	abcd
CGN21469	<i>C. chinense</i> AC 2212								0.8	ab	1.0	bcde
CGN23222	<i>C. annuum</i> Keystone Resistant Giant	0.8	1.0	0.5	1.0	bc	0.5	a	0.5	ab	1.0	bcde
PRI1994048	<i>C. annuum</i> Tit Super	1.5	2.0	2.0	2.0	de	2.0	cd	1.0	bc	1.0	abcd
PRI1996236	<i>C. annuum</i> Laris	2.0	2.0	2.0	2.0	de	2.0	cd	1.8	def	1.5	cde
CGN21470	<i>C. baccatum</i> Aji Blanco Christal	1.0	0.3	0.5	0.3	ab	0.5	a	1.1	bc	1.0	bcd
CGN23098	<i>C. annuum</i> Yolo Wonder	3.0	2.0	2.5	2.0	de	2.5	de	1.5	cde	1.2	bcd
CGN16922	<i>C. annuum</i> Sweet Chocolate								1.1	abcd	1.2	bcd
PRI1999049	<i>C. annuum</i> Jatilaba	1.5	1.3	1.5	1.3	cd	1.5	bc	0.5	ab	1.0	abcd
CGN17028	<i>C. baccatum</i>								0.5	ab	1.1	bcde
PRI2007008	<i>C. annuum</i> PBC 535-IR cayene	2.5	2.7	2.5	2.7	e	2.5	de	1.0	bc	0.5	abc
PRI2007007	<i>C. annuum</i> PBC 473 cayene	3.0	2.3	2.5	2.3	e	2.5	de	1.8	def	2.0	ef
CGN22173	<i>C. annuum</i> Sweet Banana	3.0	2.0	2.5	2.0	e	2.5	de	1.5	cde	1.0	bcd
CGN22817	<i>C. frutescens</i> L. Lombok								1.3	efgh	1.5	bcdef
CGN23206	<i>C. baccatum</i> RU 72-51								2.0	efg	1.5	cde
CGN19189	<i>C. annuum</i> California Wonder 300	2.0	1.0	2.5	1.0	bc	2.5	de	1.5	cde	1.0	bcd
PRI2004001	<i>C. annuum</i> Bruinsma Wonder	2.5	1.3	1.5	1.3	cd	1.5	bc	1.5	cde	0.7	abc
CGN22830	<i>C. annuum</i> Chili Serrano								1.8	cdefg	1.7	def
CGN22862	<i>C. chinense</i> no. 1720								2.5	gh	1.5	bcde
CGN21546	<i>C. frutescens</i> L. Tabasco								2.5	gh	1.5	bcdef
CGN16994	<i>C. chinense</i> RU 72-194								2.5	gh	1.5	cde
CGN23289	<i>C. annuum</i> Long Sweet	3.0	2.7	3.0	2.7	e	3.0	e	1.8	def	2.5	fg
CGN22829	<i>C. chinense</i> Miscucho Colorado	2.3	2.3	2.5	2.3	e	2.5	de	1.2	bcd	2.5	fg
CGN16995	<i>C. chinense</i> RU 72-241								2.5	gh	2.5	fg
CGN17219	<i>C. chinense</i> no.4661 selection	3.0	2.7	3.0	2.7	e	3.0	e	2.0	efg	3.0	g
CGN21557	<i>C. chinense</i> no. 4661	2.0	2.7	3.0	2.7	e	3.0	e	2.4	fgh	3.0	g

Table 1 continued

Acc code	Accession name	<i>Thrips parvispinus</i>			<i>Frankliniella occidentalis</i>		
		Greenhouse ^a	Leaf disc ^a	Detached leaf ^{ab}	Greenhouse ^a	Leaf Disc ^a	Detached Leaf ^{ab}
PRI1996112	<i>C. chinense</i> PI315023 (Mishme Black)	3.0	2.3	2.0	2.0	3.0	3.0
PRI1996108	<i>C. chinense</i> PI 281428	3.0	2.3	2.5	3.0	2.7	2.7

Within the same column scores followed by the same letter are not significantly different ($P > 0.05$) according to the Wilcoxon test

^a 0 = no damage, 3 = severe damage; presented data are averages over replicates within a test

Screening methods

Greenhouse tests

Pepper accessions were grown on raised beds in a screenhouse of EWINDO at Purwakarta, West Java, Indonesia. Seedlings were raised under insect free conditions in a seedling bed and transplanted 6 weeks after germination. Six plants per accession were planted in a plot, with two replications in a randomized block design. Plants were spaced 75 cm between rows and 45 cm between plants in a row. Pepper plants were grown according to standard screenhouse pepper cultivation techniques (Rossel and Ferguson 1979). Thrips infestation was spontaneous as expected, starting from 2 weeks after transplantation. Thrips were identified as *T. parvispinus*. Four weeks after the first symptoms occurred (when the most susceptible accessions were very severely affected), peppers were rated for damage using a relative scale from 0 (no damage) to 3 (severe damage, i.e. strongly curled leaves, silvering and black spots). In the Netherlands the plant material was grown at 25°C, 16/8 h day/night cycle under standard glasshouse conditions at Wageningen University and Research Centre, Wageningen. Four plants per accession were planted in a plot, with two replications in a randomized block design. After a natural thrips (*F. occidentalis*) infestation, plant were rated using a relative scale from 0 (no damage) to 3 (severely curled leaves) 7 weeks after transplantation.

Leaf disc tests

T. parvispinus were collected from a pepper field at Purwakarta, Indonesia, while *F. occidentalis* were reared on susceptible Chrysanthemum cultivar Spotnik (Fides, De Lier, the Netherlands) in an insect greenhouse at 25°C and 70% relative humidity (Koschier et al. 2000). Adult female thrips were starved for 24 h in a cage with only water (Murai and Antoon 2001). Leaf discs (4 cm in diameter) were taken from fully opened leaves using a leaf punch and placed in Petri dishes on water agar (15 g/l agar) with the lower (abaxial) side upward. Ten starved female adult thrips were placed on each leaf disc using a wet brush. Dishes were closed using either silk-like textile (in Indonesia) or air-permeable plastic (in the Netherlands) to prevent thrips from escaping and

placed in a climate room at 24°C, 16 h light, 70% RH. There were six replicates for each accession. The extent of ‘silver damage’ and destruction by thrips feeding, oviposition and secretion were rated together using a relative scale from 0 (no damage) to 3 (severe damage) 2 days after inoculation.

Detached leaf tests

The detached leaf tests were performed as the leaf disc test, except that intact leaves from each accession were placed with their petioles in wet Oasis® (2 × 5 × 4 cm) and were put in a jar. Jars were closed using silk-like textile (in Indonesia) or air-permeable plastic (in The Netherlands) and placed in a climate room at 24°C, 16 h light, 70% RH. There were six replicates for each accession. The extent of ‘silver damage’ and destruction by thrips feeding, oviposition and secretion were rated together using a relative scale from 0 (no damage) to 3 (severe damage) 2 days after inoculation.

Heritability estimation

Heritability values of each test were calculated using variance components estimated from analysis of variance using the following formulas: Genetic variance (σ_g^2) = (Accession mean square—Residual mean square)/*r*; Phenotypic variance (σ_p^2) = $\sigma_g^2 + \sigma_e^2$; Heritability (h^2) = σ_g^2/σ_p^2 ; where *r* is the number of replicates.

Statistical analysis

Accession effects were tested using Kruskal–Wallis tests; for pairwise comparisons between accessions Wilcoxon tests were used. Spearman rank correlations were calculated to compare the different test methods.

Grouping accessions with a similar pattern of resistance

Accessions were clustered based on the results of the three test methods for each thrips species, using hierarchical clustering according to the minimum variance method (Ward 1963) and multiscale bootstrap resampling analysis (Suzuki and Shimodaira 2006). Calculations and construction of the dendrograms were performed using the R software package Pvcust (<http://www.r-project.org/>).

Results

Greenhouse tests

In the screenhouse and greenhouse tests we observed leaf deformation, curling and silvering mostly at the abaxial side of the leaves (Fig. 1a, b). Those symptoms occurred together, i.e. accessions with much leaf deformation also showed much curling and silvering, and vice versa. Thrips were also found inside the flowers and in young leaf buds.

All symptoms started to occur 3 weeks after transplanting. The damage scores were recorded 7 weeks after transplanting, when the most susceptible accessions were very severely affected. In the screenhouse test with *T. parvispinus*, the seven most severely damaged accessions did not differ significantly from

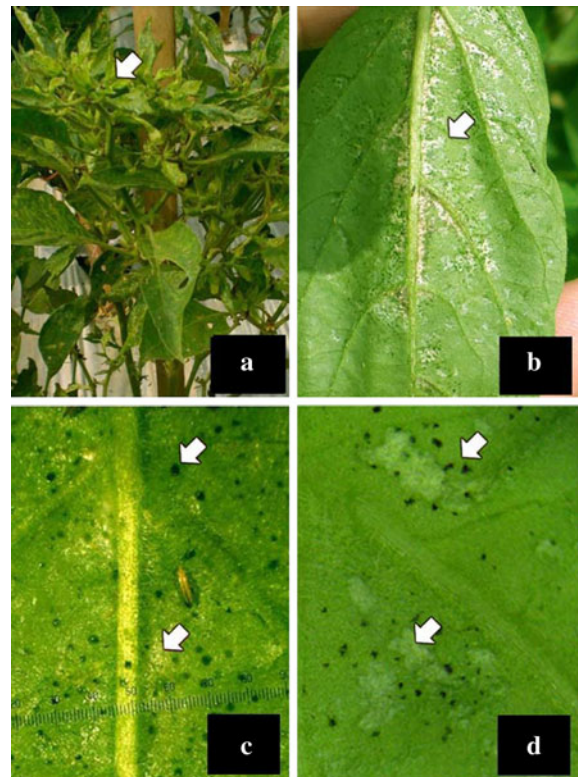


Fig. 1 Damage caused by thrips in different screening methods. **a** leaf curling and deformation in the greenhouse test (indicated by arrow), **b** silvering damage caused by thrips feeding and black spots caused by fecal material in the greenhouse test (indicated by arrow), **c** silver damage caused by thrips feeding and black spots caused by fecal material in the leaf disc test (indicated by arrows), **d** idem, in the detached leaf test

each other, while *C. annuum* ‘AC 1979’ and ‘Bisbas’ were the most resistant in this test (Table 1). In the greenhouse test with *F. occidentalis*, the seven most damaged accessions did not differ significantly from each other, nor did the nine least damaged accessions (Table 1).

Leaf disc tests

Both *T. parvispinus* and *F. occidentalis* produced silvering damage and black spots (Fig. 1c). Symptoms appeared 2 days after inoculation on the abaxial side. Based on the microscopic observation (100 \times), we could not find any differences between the type of damage caused by *T. parvispinus* and *F. occidentalis* in our leaf disc experiments.

The mean damage scores observed in leaf disc test with *T. parvispinus* ranged from 0.0 to 2.7. The twelve most damaged accessions did not differ significantly from each other, nor did the five least affected accessions (Table 1). In the tests with *F. occidentalis* the mean damage scores ranged from 0.2 to 3.0. In this case within the seven most damaged and the eight least damaged accessions no significant differences were observed (Table 1).

Detached leaf test

The damage in the detached leaf tests at 2 days after inoculation was very similar to that in the leaf disc tests (Fig. 1c, d). All damage was found at the abaxial side of the leaves. Also in this test *T. parvispinus* and *F. occidentalis* produced identical symptoms.

The mean damage scores in the detached leaf test with *T. parvispinus* ranged from 0.0 to 3.0. The ten most damaged accessions did not differ significantly from each other, nor did the six least damaged accessions (Table 1). In the tests with *F. occidentalis* the mean damage scores ranged from 0.2 to 3.0. In this case within the six most damaged and the six least damaged accessions no significant differences were observed (Table 1).

Comparison between tests

We observed several different types of damage: leaf deformation, leaf curling, black spots, and silvering on the abaxial side of the leaf. There were no differences between the symptoms caused by *T. parvispinus* and

F. occidentalis in the leaf disc and detached leaf tests. The symptoms in the greenhouse for both *T. parvispinus* and *F. occidentalis* were also identical.

The observed symptoms differed between the tests with whole plants (greenhouse test) and those with leaf discs or detached leaves. In the greenhouse test the observed symptoms included silvering, curling and deformation of leaves, while in the leaf disc and detached leaf tests the symptoms were silvering and the presence of black spots. Heritability of damage scores in all screening methods was calculated and is shown in Table 2. The heritability varied from 0.68 to 0.92.

All correlations among the tests with *T. parvispinus* (greenhouse, leaf disc, detached leaf tests) were high ($0.77 < R < 0.87$) and significant ($P < 0.001$). The correlations were slightly lower between the tests with *F. occidentalis* (greenhouse, leaf disc, and detached leaf: $0.73 < R < 0.77$, $P < 0.01$) (Table 3). The correlation across species with the same test methods were also significantly correlated (Greenhouse: $R = 0.76$, $P < 0.001$; leaf disc: $R = 0.71$, $P < 0.001$; detached leaf: $R = 0.69$, $P < 0.001$).

Grouping accessions with a similar level of resistance

A hierarchical clustering of pepper accessions based on the test results with both thrips species produced dendrograms where all branchings have a high confidence level as based on bootstrap analysis (Fig. 2). Grouping the accessions into three clusters in both cases produced groups with low, intermediate and high resistance. All six accessions in the cluster resistant to *T. parvispinus* were also resistant to

Table 2 Genetic variance (σ_g^2), environment variance (σ_e^2), phenotypic variance (σ_p^2) and heritability (h^2) of score in screening methods of thrips resistance in pepper

Thrips species	Test method	σ_g^2	σ_e^2	σ_p^2	h^2
<i>T. parvispinus</i>	Greenhouse	0.947	0.082	1.030	0.92
	Leaf disc	0.835	0.189	1.024	0.82
	Detached leaf	0.964	0.184	1.149	0.85
<i>F. occidentalis</i>	Greenhouse	0.555	0.262	0.817	0.68
	Leaf disc	0.610	0.255	0.864	0.71
	Detached leaf	0.571	0.159	0.730	0.78

Table 3 Spearman rank correlation coefficients and significance between damage score in screening methods of thrips resistance in pepper

		<i>T. parvispinus</i>		<i>F. occidentalis</i>		
		Leaf disc	Detached leaf	Greenhouse	Leaf disc	Detached leaf
<i>T. parvispinus</i>	Greenhouse	0.77**	0.80**	0.76**	0.65*	0.70**
	Leaf disc		0.87**	0.71**	0.71**	0.71**
	Detached leaf			0.73**	0.70**	0.69**
<i>F. occidentalis</i>	Greenhouse				0.77**	0.73*
	Leaf disc					0.77**

* and ** indicate significance $P < 0.01$ and $P < 0.001$, respectively

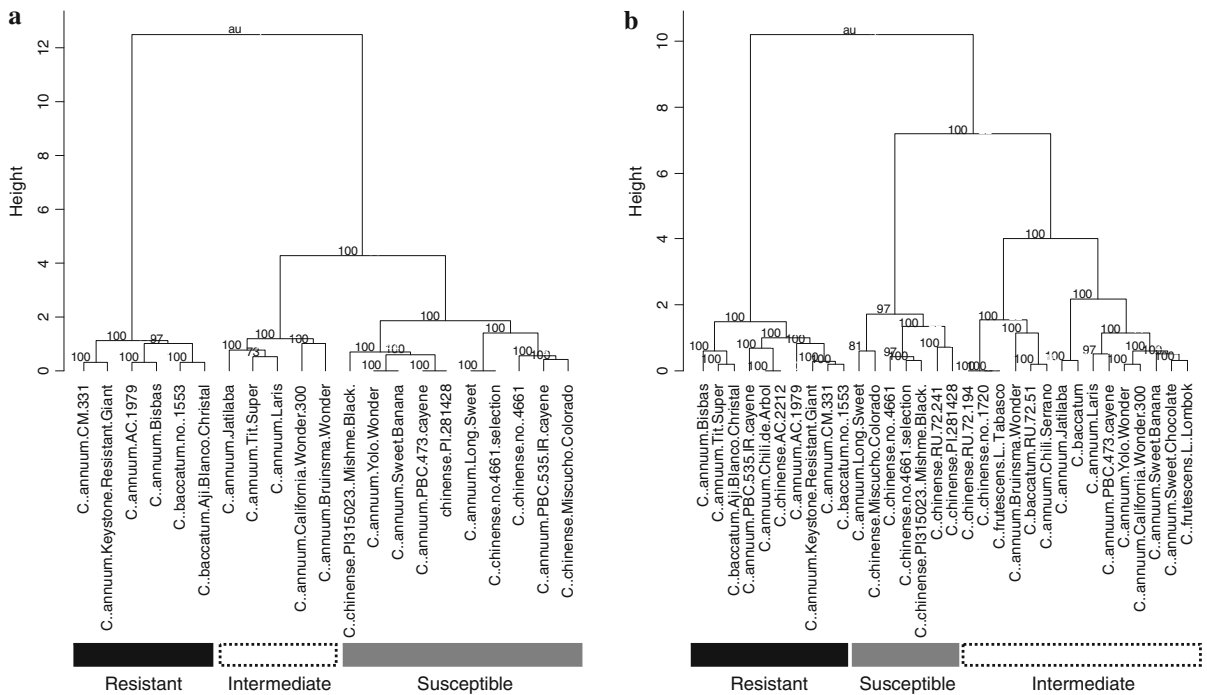


Fig. 2 Cluster analysis of pepper accessions based on their resistance level in three different tests against **a** *Thrips parvispinus* and **b** *Frankliniella occidentalis*. Values at branches are approximately unbiased (AU) P -values as

percentages (Suzuki and Shimodaira 2006). Although all branchings are strongly supported we have indicated three clusters in both dendrograms that represent resistant, intermediate and susceptible accessions

F. occidentalis, while only one (*C. annuum* PBC535 IR Cayenne) of the accessions that were resistant to *F. occidentalis* was susceptible to *T. parvispinus*. Conversely, all seven accessions in the cluster susceptible to *F. occidentalis* were also susceptible to *T. parvispinus*, and all 10 accessions susceptible to *T. parvispinus* were also susceptible or intermediate to *F. occidentalis* with the one exception mentioned above.

Discussion

Different resistance tests for thrips show highly similar results

High and very significant correlations between tests using one thrips species (Table 3) indicate that it is possible to use either the leaf disc or detached leaf test to screen pepper accessions for resistance against

thrips, thus avoiding the problematic tests with whole plants. Compared to the greenhouse tests, leaf disc and detached leaf tests are relatively easy to conduct. A small climate room is sufficient to test many accessions. They also require less time: 2 days after inoculation the damage can be scored, compared with up to 7 weeks after transplantation for screenhouse and greenhouse tests. An additional advantage is that the plants from which leaves are tested remain uninfested by thrips. Finally, environmental factors during these tests can be better controlled than in greenhouse tests. The high heritability of thrips resistance (Table 2) in the leaf disc and detached leaf tests with both *T. parvispinus* and *F. occidentalis* indicate that the observed parameter in these tests (damage score) is strongly determined by genetic factors. The higher heritability in the greenhouse test with *T. parvispinus* in Indonesia compared with the other tests may be caused by the large amounts and uniform distribution of thrips in the test after a few weeks, and the fact that they developed under natural conditions from insects healthy enough to reach and enter the greenhouse on their own account. This contrasts with the smaller number of thrips (10) used in the laboratory tests, which were reared under artificial, perhaps non-optimal conditions and which were not selected for vigour.

It has been reported that more adult thrips were found on unwounded plants than on wounded plants (Delphia et al. 2007). However, we did not observe any difference in the type of symptoms on leaf discs versus whole leaves, nor in the general amount of damage. Furthermore the correlation between leaf disc and detached leaf tests was high and significant. As the leaf disc test allows a more standardized comparison than the detached leaf test and the leaf discs are more convenient to handle than whole leaves, the leaf disc test is the most suitable for assessing a large number of pepper accessions for resistance to thrips.

Different thrips species show similar results in pepper

We observed high correlations between the tests with both thrips species (Table 3). Furthermore, the damage caused by *F. occidentalis* and *T. parvispinus* was very similar in all the tests and on all accessions in our study. In the literature we found no reports of differences in

damage caused by different thrips species on pepper. For onion, one report mentions that feeding injury caused by *F. occidentalis* is similar to that caused by *T. tabaci* Lindeman (Capinera 2001). These similarities in damage type and the high correlations between the amount of damage caused by different thrips species suggest that thrips resistance, at least in pepper, may not be very species-specific. We are aware of only one earlier report of resistance against multiple thrips species. (Babu et al. 2002) mentioned a high degree of resistance to *Scirtothrips dorsalis* and *Polyphagotarsonemus latus* in pepper accessions. Resistance to multiple thrips species is interesting as at least 16 species of thrips have been reported to occur on *Capsicum* (Capinera 2001; Talekar 1991). A wide-range resistance would be very useful in the many regions where pepper is grown and attacked by multiple thrips species such as some Asian countries where both *T. parvispinus* (Reyes 1994) and *F. occidentalis* (Zhang et al. 2007) occur.

A large variation in resistance to thrips is found in pepper germplasm

We observed large differences in thrips damage between pepper accessions in our collection (Table 1). Earlier studies also reported a considerable variability within pepper germplasm for the response to thrips (Babu et al. 2002; Fery and Schalk 1991; Kumar et al. 1996). Unfortunately, we were not able to obtain the accessions studied by Kumar et al. (1996) and Babu et al. (2002), but some accessions used by Fery and Schalk (1991) were included in our experiments. Using *F. occidentalis* in a greenhouse test with damage scored on a scale from 1 to 5, Fery and Schalk (1991) rated Keystone Resistant Giant, Yolo Wonder, Sweet Banana, and California Wonder as 2.0, 2.1, 2.2 and 2.3 respectively. In our greenhouse test with *F. occidentalis*, these accessions were rated at 0.5, 1.5, 1.5 and 1.5 on a scale from 0 to 3 (Table 1). Keystone Resistant Giant is the most resistant accession in Fery and Schalk's study (1991). Our study supports this by ranking Keystone Resistant Giant as resistant, and Yolo Wonder, Sweet Banana, and California Wonder as intermediate (Table 1, Fig. 2b). However, among our accessions we observed a wider range of damage scores and accessions more resistant than Keystone Resistant Giant.

Six pepper accessions (*C. annuum* AC 1979, *C. annuum* Bisbas, *C. annuum* Keystone Resistant Giant, *C. annuum* CM 331, *C. baccatum* no. 1553, and *C. baccatum* Aji Blanco Christal) are identified as good sources for resistance against *T. parvispinus* and *F. occidentalis*. Six accessions are identified as susceptible accessions to both *T. parvispinus* and *F. occidentalis* (*C. annuum* Long Sweet, *C. chinense* Miscucho Colorado, *C. chinense* PI 281428, *C. chinense* no. 4661, *C. chinense* no. 4661 selection and *C. chinense* PI315023).

These results show that there is considerable variation for resistance to thrips in *Capsicum* that can be exploited in breeding programs and also further genetic studies related to thrips resistance in pepper.

Acknowledgments The research was financially supported by the Royal Netherlands Academy of Arts and Sciences in the framework of the Scientific Programme Indonesia—The Netherlands named IndoSol. We thank P.T. East West Seed Indonesia for providing the necessary facilities in conducting the Indonesian experiments.

Open Access This article is distributed under the terms of the Creative Commons Attribution Noncommercial License which permits any noncommercial use, distribution, and reproduction in any medium, provided the original author(s) and source are credited.

References

- Babu B, Pandravada S, Reddy K, Varaprasad K, Sreekanth M (2002) Field screening of pepper germplasm for sources of resistance against leaf curl caused by thrips (*Scirtothrips dorsalis* Hood) and mites (*Polyphagotarsonemus latus* Banks). *Indian J Plant Prot* 30:7–12
- Bielza P (2008) Insecticide resistance management strategies against the western flower thrips, *Frankliniella occidentalis*. *Pest Manage Sci* 64:1131–1138. doi:10.1002/Ps.1620
- Brodsgaard HF (1989) *Frankliniella occidentalis*—a new pest in Danish glasshouses. *Tidsskr Planteavl* 93:83–91
- Capinera JL (2001) Order Thysanoptera-thrips. In: Capinera JL (ed) *Handbook of vegetable pests*. Elsevier Inc, pp. 535–550
- Delphia CM, Mescher MC, De Moraes CM (2007) Induction of plant volatiles by herbivores with different feeding habits and the effects of induced defenses on host-plant selection by thrips. *J Chem Ecol* 33:997–1012. doi:10.1007/s10886-007-9273-6
- Dik A, Ceglarska E & Ilovai Z (2000) Sweet pepper: development in plant pathology. In: Albajes R, Gullino M, van Lenteren J, Elad Y (eds) *Integrated pest and disease management in greenhouse crops*. Springer, Netherlands, pp. 473–485
- Fery R, Schalk J (1991) Resistance in pepper (*Capsicum annuum* L.) to Western flower thrips [*Frankliniella occidentalis* (Pergande)]. *HortScience* 26:1073–1074
- Grubben GJH, Denton OA (eds.) (2004) *Plant resources of Tropical Africa 2*
- Herron GAJT (2005) Monitoring insecticide in Australian *Frankliniella occidentalis* Pergande (Thysanoptera: Thripidae) detects fipronil and spinosad resistance. *Aust J Entomol* 44:229–303
- Herron G, James T (2005) Monitoring insecticide in Australian *Frankliniella occidentalis* Pergande (Thysanoptera: Thripidae) detects fipronil and spinosad resistance. *Aust J Entomol* 44:229–303
- Jensen SE (2000) Insecticide resistance in the western flower thrips, *Frankliniella occidentalis*. *Int Pest Manage Rev* 5:131–146
- Jones DR (2005) Plant viruses transmitted by thrips. *Eur J Plant Pathol* 113:119–157
- Kogel WJ, Balkema-Boomstra A, Hoek MVd, Zijlstra S, Mollema C (1997) Resistance to western flower thrips in greenhouse cucumber: effect of leaf position and plant age on thrips reproduction. *Euphytica* 94:63–67
- Koschier EH, De Kogel WJ, Visser JH (2000) Assessing the attractiveness of volatile plant compounds to western flower thrips *Frankliniella occidentalis*. *J Chem Ecol* 26:2643–2655
- Kumar NKK, Aradya M, Deshpande AA, Anand N, Ramachandar PR (1996) Initial screening of chili and sweet pepper germplasm for resistance to chili thrips, *Scirtothrips dorsalis* hood. *Euphytica* 89:319–324
- Maris PC, Joosten NN, Goldbach RW, Peters D (2003) Restricted spread of tomato spotted wilt virus in thrips-resistant pepper. *Phytopathology* 93:1223–1227
- Murai T, Antoon JML (2001) Evaluation of an improved method for mass-rearing of thrips and thrips parasitoid. *Entomologia Experimentalis et Applicata* 113:149–155
- Pineda A, Morales I, Marcos-Garcia MA, Fereses A (2007) Oviposition avoidance of parasitized aphid colonies by the syrphid predator *Episyrphus balteatus* mediated by different cues. *Biol Control* 42:274–280. doi:10.1016/j.biocontrol.2007.05.017
- Prabaningrum L, Suhardjono YR (2007) Species identification of thrips (*Tysanoptera*) on sweet pepper (*Capsicum annuum* var. grossum) in Bandung district, West Java Province, Indonesia. *Jurnal Hortikultura* 17:270–276
- Reyes CP (1994) Thysanoptera (Hexapoda) of the Philippine Islands. *Raffles Bull Zool* 42:1–507
- Rossel HW, Ferguson JM (1979) A new and economical screenhouse for viruses research in tropical climates. *FAO Plant Prot Bull* 27:74–76
- Sharma HC, Pampapathy G, Dhillion MK, Ridsdill-Smith JT (2005) Detached leaf assay to screen for host plant resistance to *Helicoverpa armigera*. *J Econ Entomol* 98:568–576
- Shipp J, Hao X, Papadopoulos A, Binns M (1998) Impact of western flower thrips (Thysanoptera: Thripidae) on growth, photosynthesis and productivity of greenhouse sweet pepper. *Scientia Horticultura* 78:87–102
- Siemonsma JS, Piluek K (eds) (1994) *Plant resources of South East Asia. No. 8. Vegetables*. Prosea Foundation, Bogor, Indonesia

- Suzuki R, Shimodaira H (2006) Pvcust: an R package for assessing the uncertainty in hierarchical clustering. *Bioinformatics Appl Note* 22:1540–1542. doi:[10.1093/bioinformatics/btl117](https://doi.org/10.1093/bioinformatics/btl117)
- Talekar N (1991) Thrips on pepper: AVRDC's research strategy. Regional Consultation Workshop, Bangkok, Thailand
- Tommasini M, Maini S (1995) *Frankliniella occidentalis* and other thrips harmful to vegetable and ornamental crops in Europe. In: Loomans AJM, van Lenteren JC, Tommasini MG, Maini S, Ruidavets J (eds) *Biological control of thrips pests*, vol. 95, Wageningen University Papers, Wageningen, pp. 1–42
- Ulman DE, Cho JJ, Mau RFL, Hunter WB, Westcot DM, Suter DM (1992) Thrips-tomato spotted wilt virus interactions: morphological, behavioural and cellular components influencing thrips transmission. *Adv Dis Vector Res* 9:196–240
- Vos JGM, Frinking HD (1998) Pest and diseases of hot pepper (*Capsicum sp.*) in tropical lowlands of Java, Indonesia. *J Plant Prot Trop* 11:53–71
- Ward JH (1963) Hierarchical grouping to optimize an objective function. *J Am Stat Assoc* 58:236–244
- Weintraub PG (2007) Integrated control of pest in tropical and subtropical sweet pepper production. *Pest Manag Sci* 63:753–760
- Welter SC, Rosenheim JA, Johnson MW, Mau RFL, Gusukumaminuto LR (1990) Effects of thrips-palmi and western flower thrips (*Thysanoptera, Thripidae*) on the yield, growth, and carbon allocation pattern in cucumbers. *J Econ Entomol* 83:2092–2101
- Zhang ZJ, Wu Q, Li XF, Zhang YJ, Xu BY, Zhu GR (2007) Life history of western flower thrips, *Frankliniella occidentalis* (Thysanoptera, Thripidae), on five different vegetable leaves. *J Appl Entomol* 131:347–354. doi:[10.1111/j.1439-0418.2007.01186.x](https://doi.org/10.1111/j.1439-0418.2007.01186.x)