



CORRECTION

## Correction to: Detection and assessment of the phytotoxicity of residual organic pollutants in sediment contaminated with pulp and paper mill effluent

Sangeeta Yadav · Ram Chandra

Published online: 21 May 2021  
© Springer Nature Switzerland AG 2021

**Correction to: Environ Monit Assess (2018) 190:58**  
<https://doi.org/10.1007/s10661-018-6947-1>

The original version of this article unfortunately contained a mistake.

The Fig. 6 was published erroneously.

The corrected Fig. 6 is shown in the next page.

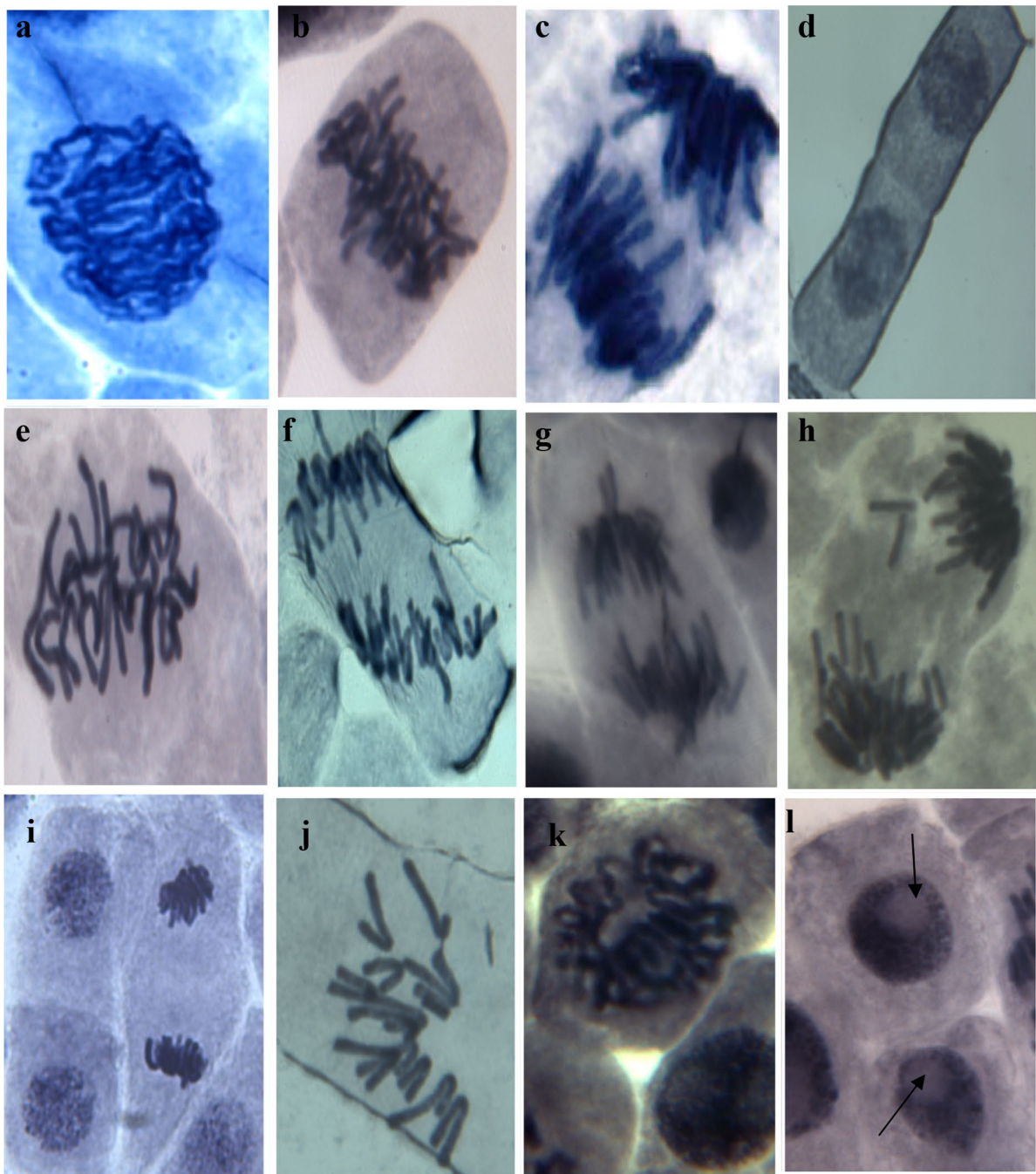
---

The original article can be found online at <https://doi.org/10.1007/s10661-018-6947-1>.

---

S. Yadav · R. Chandra (✉)  
Department of Environmental Microbiology, School  
for Environmental Sciences, Babasaheb Bhimrao  
Ambedkar University (A Central University), Vidya Vihar,  
Raebareli Road, Lucknow, Uttar Pradesh 226025, India  
e-mail: rc\_microitrc@yahoo.co.in; prof.chandrabbau@  
gmail.com

S. Yadav  
e-mail: sangeeta\_biotech12@rediffmail.com



**Fig. 6** Different chromosomal aberrations in *Allium cepa* induced by PPECS (e-l) and the control (a-d): normal prophase (a), normal metaphase (b), normal anaphase (c), normal telophase (d), stick metaphase (e), disturbed anaphase (f), ana-

phase bridge (g), chromosome laggards at the anaphase (h), sticky anaphase (i), c-mitosis (j), ring chromosome (k) and 'arrowed' vacuolated nucleus (l)

**Publisher's Note** Springer Nature remains neutral with regard to jurisdictional claims in published maps and institutional affiliations.