



## Correction to: Phase Ib/II study of gemcitabine, nab-paclitaxel, and pembrolizumab in metastatic pancreatic adenocarcinoma

Glen J. Weiss<sup>1,2</sup> · Lisa Blaydorn<sup>1</sup> · Julia Beck<sup>3</sup> · Kirsten Bornemann-Kolatzki<sup>3</sup> · Howard Urnovitz<sup>3</sup> · Ekkhard Schütz<sup>3</sup> · Vivek Khemka<sup>1,4</sup>

Published online: 24 April 2019  
© Springer Science+Business Media, LLC, part of Springer Nature 2019

**Correction to: Invest New Drugs (2018) 36:96–102**  
<https://doi.org/10.1007/s10637-017-0525-1>

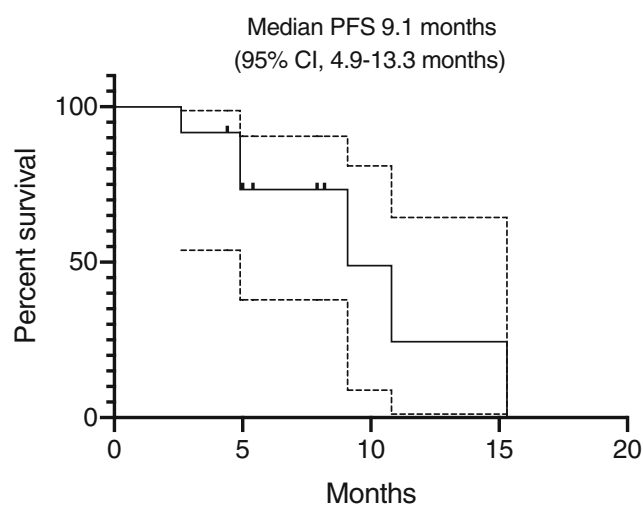
The authors would like to note an error in Figures 1 and 2 of this paper. The graph in Figure 1 incorrectly reflected the overall survival (OS), when it should have displayed the progression-free survival (PFS). The caption and median PFS values were correct. It was also noted that the upper value for the 95% CI had an error in both figures. Both graphs have been regenerated using the published PFS and OS data presented in Table 2 and the corrected 95% CIs are included. These changes do not impact the overall results of the data or the conclusions presented in the publication. We sincerely apologize for this oversight.

**Publisher's note** Springer Nature remains neutral with regard to jurisdictional claims in published maps and institutional affiliations.

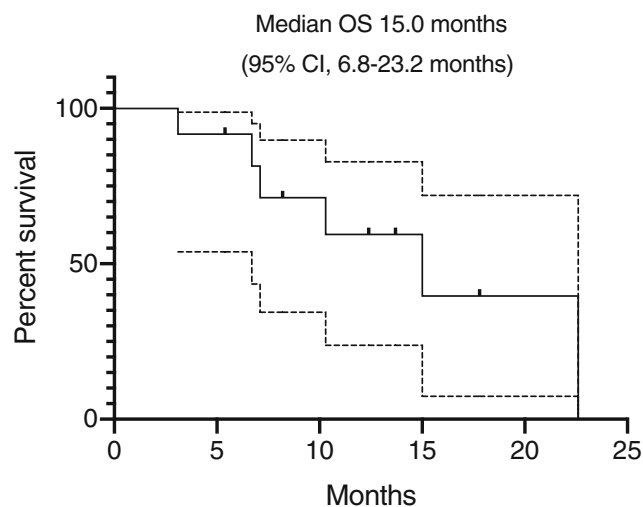
The online version of the original article can be found at <https://doi.org/10.1007/s10637-017-0525-1>

✉ Glen J. Weiss  
drglenweiss@outlook.com

- <sup>1</sup> Western Regional Medical Center, Cancer Treatment Centers of America, Goodyear, AZ, USA
- <sup>2</sup> Present address: University of Arizona College of Medicine-Phoenix, Phoenix, AZ, USA
- <sup>3</sup> Chronix Biomedical, Göttingen, Germany
- <sup>4</sup> Present address: Virginia G. Piper Cancer Center, Scottsdale, AZ, USA



**Fig. 1** PFS for chemotherapy treatment naïve PDAC (n = 12). The solid line shows PFS. The hashed line shows the 95% CI (confidence interval) for the curve



**Fig. 2** OS for chemotherapy treatment naïve PDAC (n = 12). The solid line shows OS. The hashed line shows the 95% CI for the curve