



Correction to: Future projection of maximum potential storm surge height at three major bays in Japan using the maximum potential intensity of a tropical cyclone

Nobuhito Mori¹ · Nozomi Ariyoshi² · Tomoya Shimura¹ · Takuya Miyashita¹ · Junichi Ninomiya³

Published online: 23February 2021

© Springer Nature B.V. 2021

Correction to: Climatic Change

<https://doi.org/10.1007/s10584-021-02980-x>

The original article has been corrected. Figures 2 and 3 have incorrect figure legends. Please find here the figures with the correct captions.

The online version of the original article can be found at <https://doi.org/10.1007/s10584-021-02980-x>

✉ Nobuhito Mori
mori@oceanwave.jp

¹ Disaster Prevention Research Institute, Kyoto University, Uji, Kyoto 611-0011, Japan

² Graduate School of Engineering, Kyoto University, Uji, Kyoto 611-0011, Japan

³ Faculty of Geosciences and Civil Engineering, Kanazawa University, Kakuma-machi, Kanazawa 920-1192, Japan

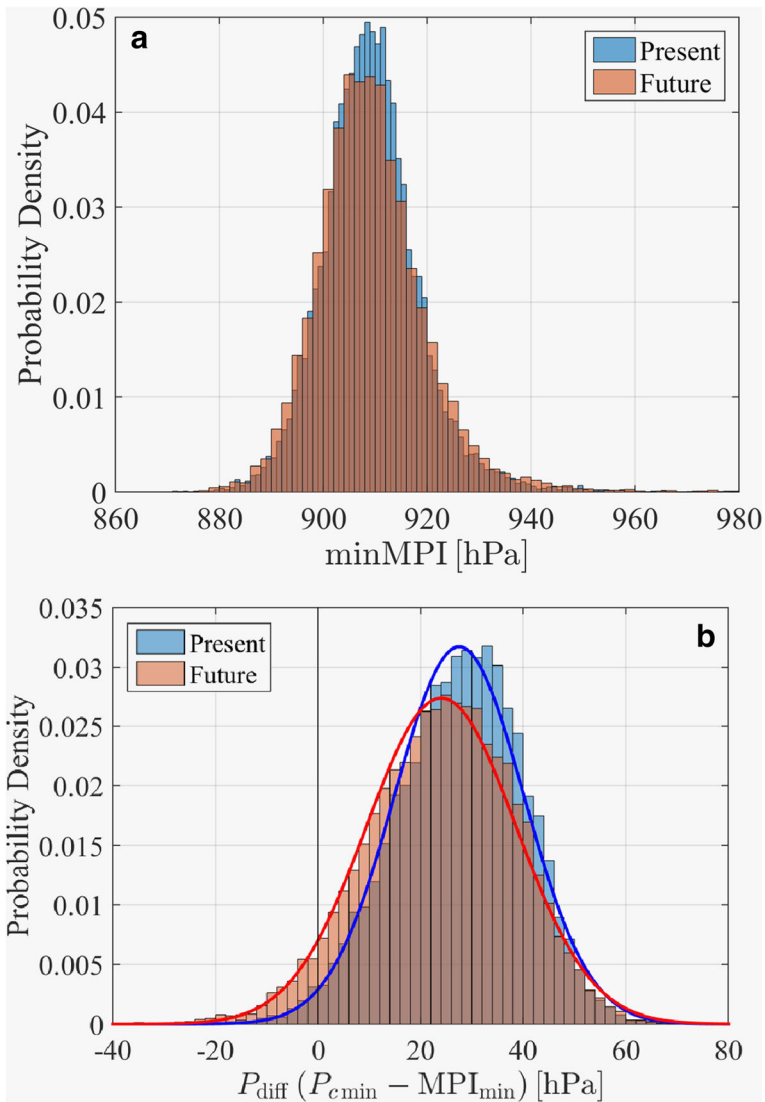


Fig. 2 Relation between minimum central pressure of modeled TC, P_{min} and the minimum MPI, MPI_{min} along the track (blue: present climate, red: +4K climate)

Publisher's note Springer Nature remains neutral with regard to jurisdictional claims in published maps and institutional affiliations.

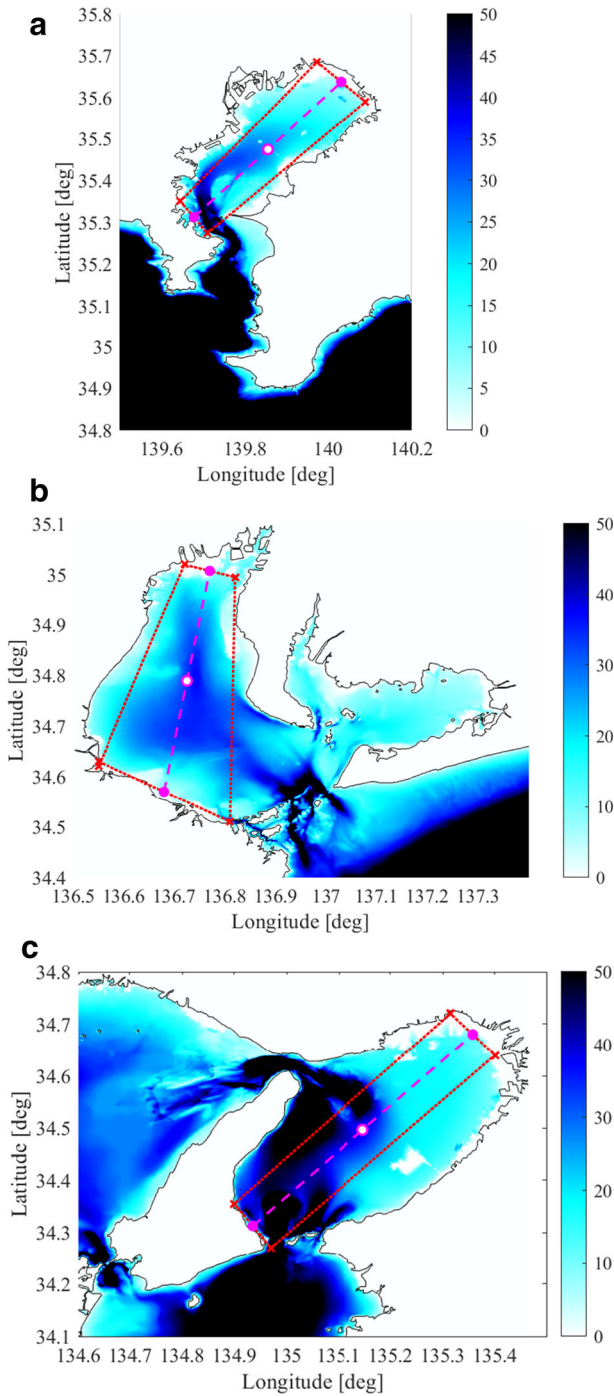


Fig. 3 Definition of bay axis for target three bays (pink dashed line: the longest fetch, red dotted line: the simplified shape of the bay shape, filled circles: starting and ending points of the bay, open circle: middle of the bay, see cross sectional bathymetry along pink dashed line in Fig. A.1)