






Correction to: Identification of passion fruit (*Passiflora edulis*) chromosomes using BAC-FISH

M. A. Sader  · Y. Dias · Z. P. Costa · C. Munhoz · H. Penha · H. Bergès · M. L. C. Vieira  · A. Pedrosa-Harand 

Published online: 19 May 2020
© Springer Nature B.V. 2020

Correction to: Chromosome Res (2019) 27:299–311
<https://doi.org/10.1007/s10577-019-09614-0>

The article “Identification of passion fruit (*Passiflora edulis*) chromosomes using BAC-FISH,” written by Mariela A. Sader, Yhanndra Dias, Zirlane P. da Costa, Carla Munhoz, Helen Penha, H el ene Berg es, Maria Lucia C. Vieira, and Andrea Pedrosa-Harand, was originally published with incorrect values in Figure 4. The correct Figure 4 is presented below.

The online version of the original article can be found at
<https://doi.org/10.1007/s10577-019-09614-0>

M. A. Sader · Y. Dias · A. Pedrosa-Harand (✉)
Departamento de Bot nica, Laborat rio de Citogen tica e
Evolu o Vegetal, Centro de Bioci ncias, Universidade Federal de
Pernambuco, R. Prof. Moraes Rego, s/n, CDU, Recife, PE
50670-901, Brazil
e-mail: andrea.harand@ufpe.br

Z. P. Costa · C. Munhoz · M. L. C. Vieira
Department of Genetics, “Luiz de Queiroz” College of
Agriculture, University of S o Paulo, Piracicaba, Brazil

H. Penha
Department of Technology, Faculty of Agricultural and Veterinary
Sciences, S o Paulo State University (UNESP), Jaboticabal, Brazil

H. Berg es
French Plant Genomic Resources Center (CNRGV)/INRA,
Toulouse, France

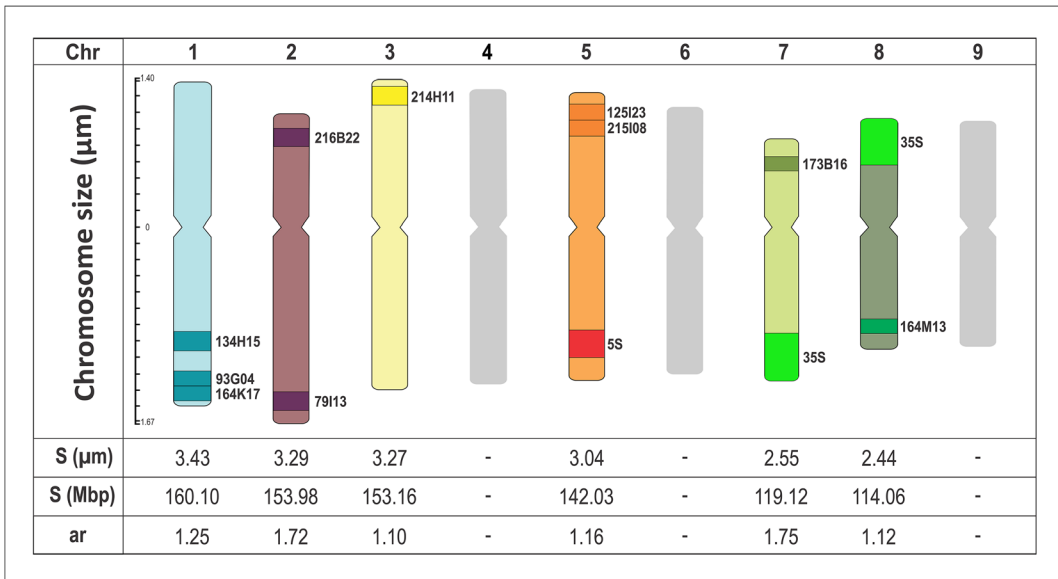


Figure 4 Idiogram of passion fruit showing the relative chromosome size (Chr., in μm and Mbp), centromere positions (ar, arm ratio), rDNA loci (5S and 35S), and single-copy BAC clone positions for six identified chromosome pairs