



Correction: Physically processed waste pineapple leaf fibre for high performance composite with polypropylene

Habibur Rahman · Sohel Rana · Apurba Das ·
Ramasamy Alagirusamy

Published online: 29 February 2024
© The Author(s), under exclusive licence to Springer Nature B.V. 2024

Correction to: Cellulose

<https://doi.org/10.1007/s10570-023-05708-5>

In the original publication of the article, Figs. 7 and 8 were duplicated. The correct version of the Figs. 7 and 8 are provided in this correction. The original article has been corrected.

The original article can be found online at <https://doi.org/10.1007/s10570-023-05708-5>.

H. Rahman (✉) · S. Rana · A. Das · R. Alagirusamy
Department of Textile and Fibre Engineering, Indian
Institute of Technology, Delhi, New Delhi 110016, India
e-mail: habib_te@just.edu.bd

H. Rahman
Department of Textile Engineering, Jashore University
of Science and Technology, Jashore 7408, Bangladesh

Fig. 7 Surface morphology of PALF as observed by SEM images: **a** 101.6 mm cut-length fourth carded (L4C); **b** 101.6 mm cut-length fifth carded (L5C); **c** 76.2 mm cut-length fourth carded (M4C); **d** 76.2 mm cut-length fifth carded (M5C); **e** 50.8 mm cut-length fourth carded (S4C); and **f** 50.8 mm cut-length fifth carded (S5C)

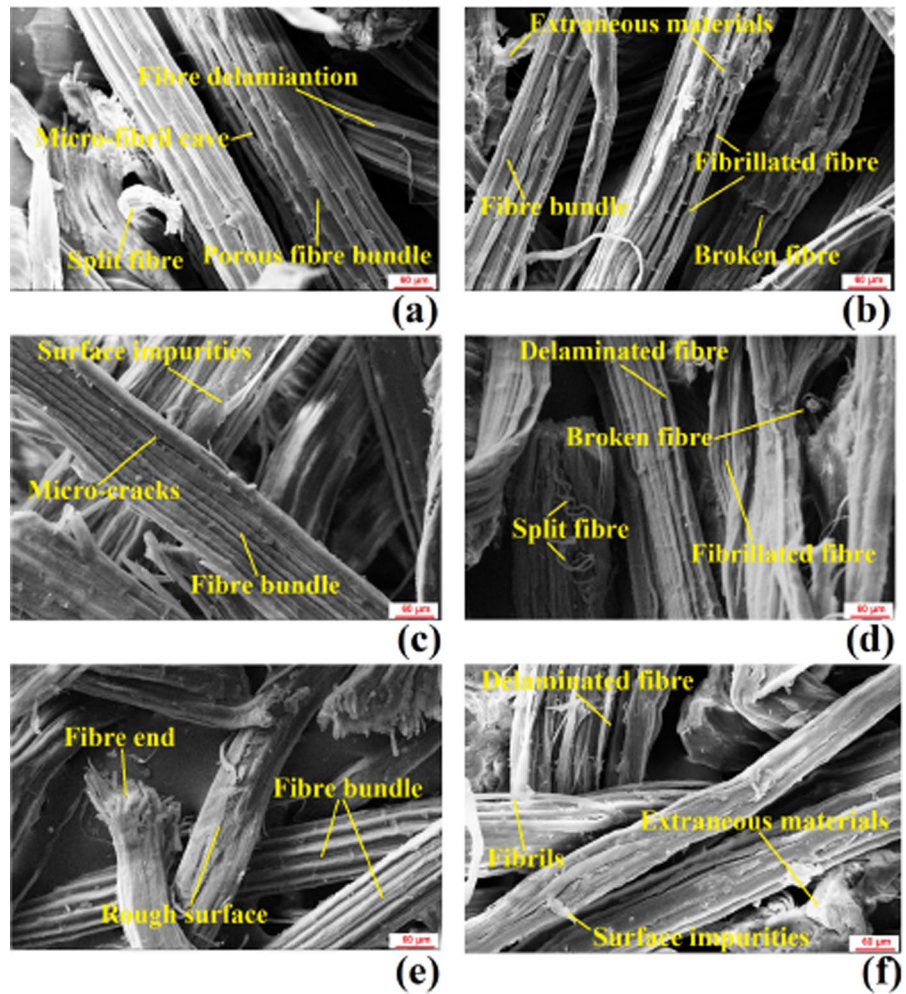
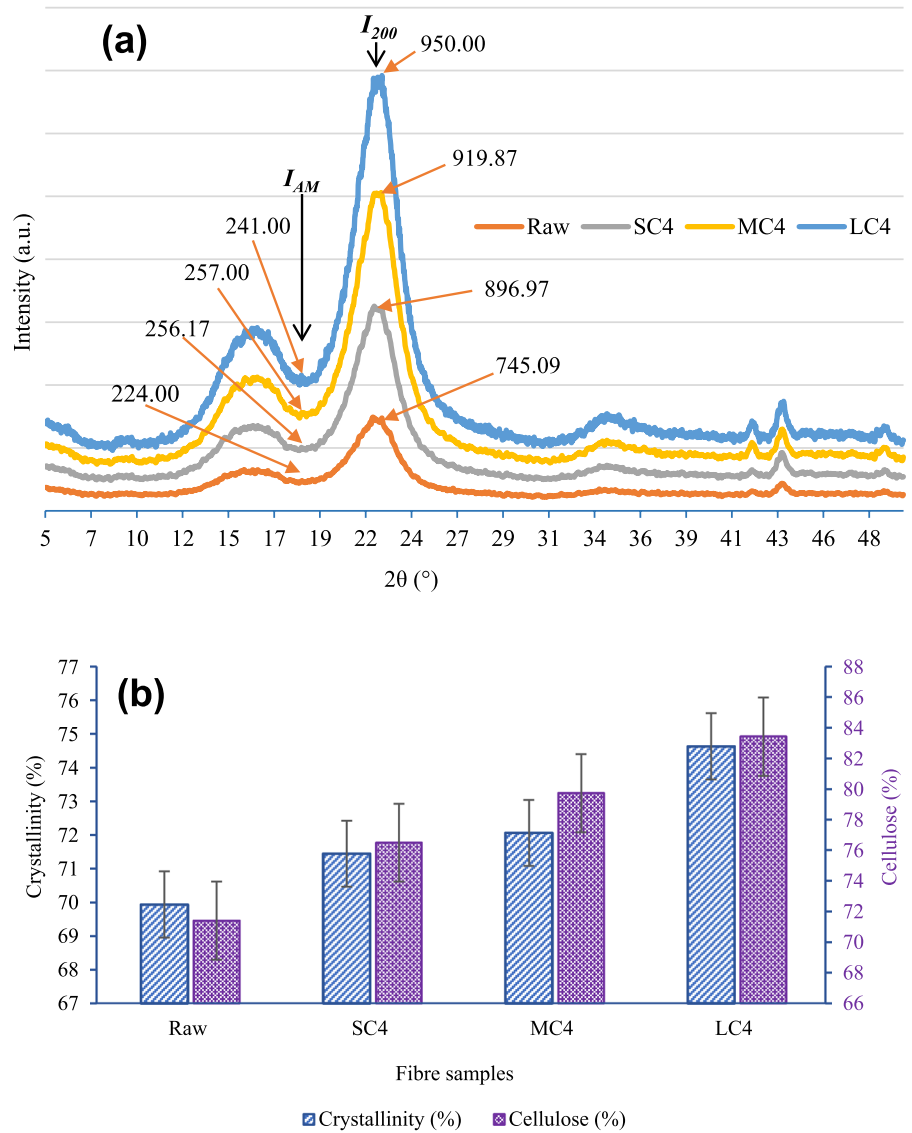


Fig. 8 **a** X-ray diffraction pattern; **b** crystallinity (%) and cellulose (%) of PALF samples



Publisher’s Note Springer Nature remains neutral with regard to jurisdictional claims in published maps and institutional affiliations.