

Erratum to: Estrogen receptor beta binds Sp1 and recruits a corepressor complex to the estrogen receptor alpha gene promoter

V. Bartella¹ · P. Rizza² · I. Barone^{2,3} · D. Zito¹ · F. Giordano² · C. Giordano³ · S. Catalano^{1,3} · L. Mauro² · D. Sisci^{1,3} · M. L. Panno² · S. A. W. Fuqua⁴ · S. Andò^{2,3}

Published online: 23 March 2016
 © Springer Science+Business Media New York 2016

Erratum to: Breast Cancer Res Treat (2012)
134:569–581
DOI 10.1007/s10549-012-2090-9

Unfortunately, authors could not find the original film from which the figure was drawn. Therefore, as suggested by the Editor, they have repeated the relative experiment, and ask to publish this new figure as a correction. The authors apologize for any inconvenience that it may cause.

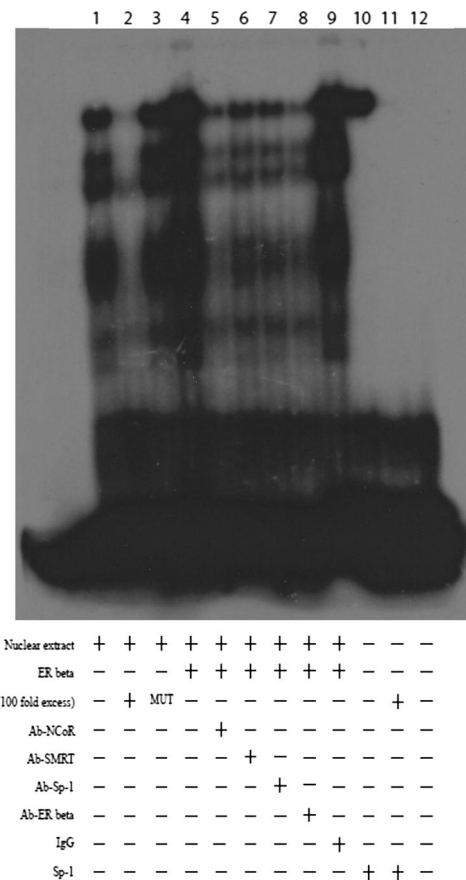


Fig. 3 ER beta recruits corepressors to the Sp-1 site in the ER alpha gene promoter. **a** Nuclear extracts from MCF-7 cells transfected with either empty vector or ER beta expression plasmid were incubated with a double-stranded Sp-1 specific sequence probe labeled with [γ -³²P] ATP and subjected to electrophoresis in a 6 % polyacrylamide gel (*lanes 1 and 4*). Competition experiments were performed adding as competitor a 100-fold molar excess of unlabeled probe (*lanes 2 and 11*) or a 100-fold molar excess of unlabeled oligonucleotide containing a mutated Sp-1 motif (*lane 3*). Nuclear extracts from MCF-7 over-expressing ER beta were incubated with anti-NCOR (*lane 5*) or anti-SMRT (*lane 6*) or anti-Sp-1 (*lane 7*) or anti-ER beta (*lane 8*) or IgG (*lane 9*) antibodies, in the presence of the probe. *Lane 10* Sp-1 protein. *Lane 12* probe alone

The online version of the original article can be found under doi:10.1007/s10549-012-2090-9.

✉ S. Andò
 sebastiano.ando@unical.it

- Department of Pharmaco-Biology, University of Calabria, Via P. Bucci, 87036 Arcavacata di Rende, CS, Italy
- Department of Cellular Biology, Faculty of Pharmacy, Nutritional and Health Sciences, University of Calabria, Via P. Bucci, 87036 Arcavacata di Rende, CS, Italy
- Centro Sanitario, University of Calabria, Arcavacata di Rende, CS, Italy
- Lester and Sue Smith Breast Center and Department of Molecular and Cellular Biology, Baylor College of Medicine, One Baylor Plaza, Houston, TX, USA