




Correction to: Earthquake-induced landslide scenarios for seismic microzonation: application to the Accumoli area (Rieti, Italy)

S. Martino¹  · S. Battaglia¹ · F. D'Alessandro¹ · M. Della Seta¹ · C. Esposito¹ · G. Martini² · F. Pallone¹ · F. Troiani¹

Published online: 25 April 2019
© Springer Nature B.V. 2019

Correction to: Bulletin of Earthquake Engineering
<https://doi.org/10.1007/s10518-019-00589-1>

During some overlook in typesetting process low-resolution files for Fig. 1 was used. The correct Fig. 1 is given.

The original article can be found online at <https://doi.org/10.1007/s10518-019-00589-1>.

✉ S. Martino
salvatore.martino@uniroma1.it

¹ Dipartimento di Scienze della Terra e Centro di Ricerca per i Rischi Geologici (CERI), Università di Roma Sapienza, P.za A. Moro 5, 00185 Rome, Italy

² Agenzia Nazionale per le Nuove Tecnologie, l'Energia e lo Sviluppo Economico Sostenibile (ENEA), Via Enrico Fermi, 45, 00044 Frascati, Rome, Italy

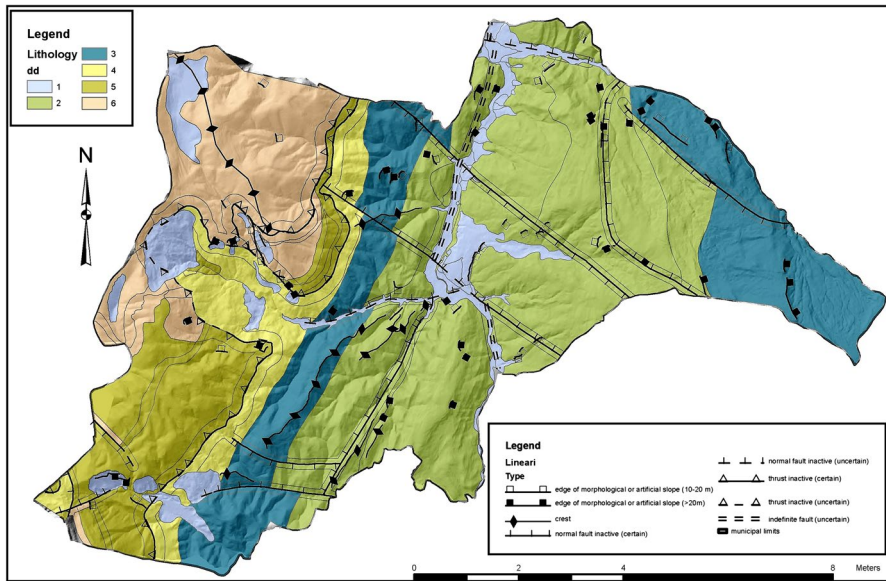


Fig. 1 Lithotechnical map of the Municipality of Accumoli with main morphostructural elements: (1) slope and alluvial deposits, (2) mostly arenaceous flysch, (3) mostly pelitic flysch, (4) marly clay, (5) marly limestone, (6) limestone

Publisher's Note Springer Nature remains neutral with regard to jurisdictional claims in published maps and institutional affiliations.