



On the Co-existence of Transonic Buffet and Separation-Bubble Modes for the OALT25 Laminar-Flow Wing Section

Markus Zauner¹ · Pradeep Moise¹ · Neil D. Sandham¹

Received: 21 September 2022 / Accepted: 31 March 2023 / Published online: 4 May 2023
© The Author(s) 2023

Abstract

Transonic buffet is an unsteady flow phenomenon that limits the safe flight envelope of modern aircraft. Scale-resolving simulations with span-periodic boundary conditions are capable of providing new insights into its flow physics. The present contribution shows the co-existence of multiple modes of flow unsteadiness over an unswept laminar-flow wing section, appearing in the following order of increasing frequency: (a) a low-frequency transonic buffet mode, (b) an intermediate-frequency separation bubble mode, and (c) high-frequency wake modes associated with vortex shedding. Simulations are run over a range of Reynolds and Mach numbers to connect the lower frequency modes from moderate to high Reynolds numbers and from pre-buffet to established buffet conditions. The intermediate frequency mode is found to be more sensitive to Reynolds-number effects compared to those of Mach number, which is the opposite trend to that observed for transonic buffet. Spectral proper orthogonal decomposition is used to extract the spatial structure of the modes. The buffet mode involves coherent oscillations of the suction-side shock structure, consistent with previous studies including global mode analysis. The laminar separation-bubble mode at intermediate frequency is fundamentally different, with a phase relationship between separation and reattachment that does not correspond to a simple ‘breathing’ mode and is not at the same Strouhal number observed for shock-induced separation bubbles. Instead, a Strouhal number based on separation bubble length and reverse flow magnitude is found to be independent of Reynolds number within the range of cases studied.

Keywords CFD · Transonic buffet · Large eddy simulation · Aerodynamics

✉ Markus Zauner
m.zauner@soton.ac.uk

Pradeep Moise
pradeep890@gmail.com

Neil D. Sandham
n.sandham@soton.ac.uk

¹ Aerodynamics and Flight Mechanics Group, University of Southampton, University Rd, Highfield, Southampton, Hampshire SO17 1BJ, UK

1 Introduction

Transonic buffet refers to a self-sustained passive aerodynamic instability at high speeds that typically occurs near stall conditions and leads to strong and detrimental fluctuations of aerodynamic forces over wings and control surfaces or engine components of modern aircraft. As a consequence, these load oscillations can induce violent structural vibrations, known as buffeting, limiting the safe flight envelope of civil aircraft and performance capabilities of military platforms (Jones 1973; John 1997). Even though buffet-related phenomena have been known for a long time (Duncan 1934), we still lack a complete understanding of the underlying mechanism (Mabey 1973; Lee 2001; Giannelis et al. 2017). While transonic buffet is typically accompanied by a single oscillating shock wave, the latter's role (i.e. cause or consequence) with respect to intermittent flow-separation effects still remains an open question (Paladini et al. 2019). While two-dimensional buffet phenomena can co-exist for swept wings (Paladini et al. 2019) as well as half-wing-body configurations (Timme and Thormann 2016; Masini et al. 2020), three-dimensional phenomena like buffet cells (Iovnovich and Raveh 2012), which have been shown to be essentially stall cells (Plante and Dandois 2019), are also likely to be present. In the scope of the present study, we focus our review on buffet over unswept wing sections, known as '2D buffet'. The main purpose of the present numerical study of ONERA's OALT25 profile is to disentangle the multiple modes present near stall of free-transitional sections. To do this, we first need to review a broad range of literature.

We observe two main philosophies in the modern literature, describing buffet either as an acoustic feedback mechanism or as a global instability. In a first attempt to explain the buffet mechanism, Erickson and Stephenson (1947) proposed a model of transonic buffet based on acoustic feedback, where acoustic waves originating from the trailing edge propagate upstream and interact with the shock wave. After modifications by Tijdeman (1977), Lee (1990) supplemented this model with downstream-convecting disturbances, previously observed by Roos (1980). Despite large popularity and further modifications (e.g. Hartmann et al. 2013, Stanewsky and Basler 1990), such acoustic feedback models lack general validity and have been shown inaccurate in several numerical as well as experimental studies (Garnier and Deck 2010; Fukushima and Kawai 2017; Sugioka et al. 2018; Zauner and Sandham 2019a; Moise et al. 2022a).

Crouch and co-workers (Crouch et al. 2007, 2009) presented a more rigorous way to analyse buffet onset by solving an eigenvalue problem of the Reynolds-Averaged Navier–Stokes equations linearised around a two-dimensional baseflow. This allowed them to identify a global mode becoming unstable at onset conditions and frequencies typical of buffet. Even though these modes suggest strong fluctuations of the shock wave location, they also highlight strong coupling between shock dynamics and boundary-layer separation phenomena. In addition to direct global stability analysis, Sartor et al. (2018) solved also its adjoint problem, which suggests regions optimal to influence associated global modes. While Sartor et al. (2018) highlights the strong sensitivity of transonic buffet to boundary-layer characteristics, the shock wave itself does not appear in adjoint modes, which raises questions about the role of shock waves in transonic buffet.

The studies discussed so far have considered only fully-turbulent or tripped boundary layers upstream of the main shock wave. Buffet phenomena over laminar-flow wings with delayed natural transition of the laminar boundary layer have recently attracted increasing attention to support the design more efficient next-generation aircraft. Industry is particularly interested in answering the question of how buffet characteristics (such as onset

conditions, frequency, and amplitude) of laminar-flow wings are different from conventional supercritical wings. While transition modelling for Reynolds-Averaged Navier Stokes simulations can be problematic, a recent surge in computational resources in combination with powerful massively-parallelised CFD codes enables scale-resolving simulations of practical test cases relevant for buffet research. Dandois et al. (2018) carried out the first wall-resolved Large-Eddy-Simulation of a laminar-flow wing at buffet conditions considering the OALT25 profile. They observed rather localised oscillations of the shock foot (6% of the chord length) at a relatively high Strouhal number (based on chord length and free-stream velocity) of $St \approx 1.2$, compared to typical large-scale motion of the entire shock wave (20% of the chord length) at $St \approx 0.07$ applying boundary-layer tripping (Brion et al. 2017), which corresponds to typical frequencies associated with buffet in literature. The authors suggested two fundamentally different mechanisms leading to periodic lift and shock oscillations. On the one hand, the instability observed for tripped boundary layers resembles the global mode described in Crouch et al. (2007) ($St \approx 0.05$). On the other hand, the more localised oscillations for free-transitional boundary layers at $St \approx 1.1$ of Dandois et al. (2018) appeared more reminiscent of separation-bubble breathing phenomena, which are typically observed for shock waves impinging on a laminar boundary layer over a flat plate (Piponniau et al. 2009). However, Strouhal numbers based on separation length L , did not agree between those of Dandois et al. (2018) ($St_L = 0.13$) and reference literature (Dussauge et al. (2006): $St_L = 0.02 - 0.05$).

Based on whether the boundary layer upstream of the shock wave is fully turbulent or laminar, Dandois et al. (2018) referred to the former as ‘turbulent buffet’ and the latter as ‘laminar buffet’, acknowledging the similarities in terms of aerodynamic consequences (i.e. shock oscillations and periodic load fluctuations), but differences in terms of spatio-temporal scales (i.e. low- versus intermediate-frequency oscillations) and origin (i.e. instability of the entire flow field versus a localised laminar separation bubble). Conducting experimental studies of the same test case, Brion et al. (2019) could essentially confirm the numerical results of Dandois et al. (2018), but observed, in addition to the sharp spectral peak at $St = 1.1$, a weak bump in spectra of pressure probes around $St = 0.05 - 0.06$.

In the scope of the European TFAST project, several numerical (e.g. Grossi 2014; Szubert et al. 2016; Sznajder and Kwiatkowski 2016; Memmolo et al. 2016) as well as experimental studies (e.g. Davidson and Babinsky 2016; Placek and Miller 2016; Placek and Ruchała 2018) were carried out for Dassault Aviation’s V2C laminar-flow profile at $Re \approx 2,600,000$. In terms of the spatial organisation of flow oscillations, buffet compared well between the V2C and OALT25 test cases subjected to tripped boundary layers, even though the dominant frequency of the former case ($St \approx 0.1$) is significantly higher compared to the latter ($St \approx 0.06$). Interestingly, tripping boundary layers on the V2C airfoil at various locations did not show significant effect on buffet frequencies and amplitudes (Placek and Ruchała 2018; Davidson and Babinsky 2016). Using LES and RANS methods, Moise et al. (2022a, 2022b) carried out an extensive parametric study for the V2C airfoil at Reynolds numbers in the range of $Re = 500,000 - 3,000,000$. While multiple shock waves appear at free-transitional conditions, Moise et al. (2022b) showed that boundary-layer tripping leads to the appearance of a single shock wave. For free-transitional cases, Moise et al. (2022a) observed no significant Reynolds-number sensitivity in the features of the buffet instability at $St \approx 0.1$. An increase in Reynolds numbers, on the other hand, was found to reduce the number of shock waves suggesting that further increase in Reynolds numbers would lead to single back and forth oscillating shock wave as seen as in experiments. By means of Spectral Proper Orthogonal Decomposition (SPOD) and global linear stability analysis of results from Reynolds-Averaged Navier–Stokes equations it was shown

that the underlying buffet instability is essentially the same for tripped and free-transitional boundary layers. Furthermore, the shape of buffet modes for the V2C profile resemble those of OAT15A (Sartor et al. 2018) and NACA0012 (Crouch et al. 2007) profiles.

For free-transitional conditions, Moise et al. (2022a) also reported SPOD modes at $St \approx 1.5$, which are mainly dominant in the wake region, hence labelled as wake modes. Similar flow structures were also extracted by Zauner and Sandham (2019a) applying dynamic mode decomposition (DMD) to Direct Numerical Simulation (DNS) data at $Re = 500,000$. Various other studies (e.g. Grossi et al. 2014, Memmolo et al. 2016) have reported similar structures around $St \approx 1$ for higher Reynolds numbers.

Spectra of experimental data by Placek and Miller (2016) suggest a weak secondary bump at Strouhal numbers substantially larger compared to the one linked to buffet ($St \approx 0.4$). Also Zauner and Sandham (2019a) reported a weak broadband bump in DNS spectra and extracted DMD modes in the frequency range of $St = 0.4 - 0.8$, which are composed of acoustic waves and fluctuations in boundary and shear layers at wave lengths comparable to the size of the laminar separation bubble, suggesting a connection to the separation-bubble instability reported by Dandois et al. (2018) for the OALT25. Even though the physical relevance of these weak DMD modes has not been confirmed so far, Börner and Niehuis (2021) reported similar intermediate-frequency phenomena at $St \approx 0.42$ for experimental studies of a transonic low pressure turbine.

The objectives of this study are to understand and characterise the nature of ‘laminar buffet’ reported by Dandois et al. (2018) and how it links to the rest of the literature on transonic buffet by performing scale-resolving simulations of free-transitional flows over the OALT25 airfoil, where variations of Re lead to different onset-conditions.

Before outlining the structure of the present paper, we want to introduce some definitions used within the scope of this work. Using scale-resolving simulations for our analysis, we consider Reynolds numbers of the order of $Re \sim O(10^6)$ as *high* compared to $Re \sim O(10^5)$ associated with *moderate* Reynolds numbers. Below and beyond these bands, Reynolds numbers are labelled as *low* and *flight* Reynolds numbers, respectively.

As we encounter in literature a range of relevant flow phenomena at different time scales, we classify them into *low-* ($St \sim O(10^{-2})$), *intermediate-* ($St \sim O(10^{-1})$), *high-frequency* phenomena ($St \sim O(10^0)$). Phenomena at frequencies beyond $St \sim O(10^1)$ are associated with linear boundary-layer instabilities and small-scale turbulence (Zauner and Sandham 2019a; Zauner et al. 2017). Following definitions by Adamson and Liou (1977), low- as well as intermediate-frequency oscillations belong to the slowly varying time regime with $St \cdot M < 0.1$ and $0.1 < St \cdot M < 1.0$, respectively. For present test cases, we observe transonic buffet in the low-frequency range, where the spatial organisation of oscillations of the flow field agrees well with the globally unstable ‘turbulent buffet’ mode described by Crouch et al. (2007). As we will see later, frequencies associated with these phenomena do not show significant Reynolds-number sensitivity for the investigated test cases. Intermediate-frequency phenomena, are confirmed to be associated with separation bubble unsteadiness, which was labelled as ‘laminar buffet’ in previous studies (Dandois et al. 2018). In the present study, we will for the most part refrain from expressions like ‘turbulent’ and ‘laminar’ buffet to avoid confusion, since both modes can co-exist for the considered test cases with natural transition. High-frequency phenomena appear to be mostly dominant within the airfoil wake and are associated with wake modes (Moise et al. 2022a).

Now that we have classified transonic buffet as a low-frequency instability, we characterise flow conditions according to its dominance. While the flow field at *pre-buffet* conditions is dominated by unsteadiness at Strouhal numbers $St \cdot M > 0.1$, we associate the first

appearance of a clear peak at low frequencies with *incipient buffet*, which leads to a first kink terminating the linear part of the $C_L - \alpha$ polar. An increase of relevant flow parameters (e.g., Mach number or angle of attack) would lead to *developed buffet* (or *deterrent buffet* from the pilot's perspective), where low-frequency phenomena clearly dominate the global flow dynamics around the wing section and mean C_L values start decreasing for the present study. Further increasing the aerodynamic load will lead to a decay of low-frequency oscillations, i.e., *buffet offset*, and eventually, instabilities at higher frequencies will again dominate the flow field, which will be referred to as *post-buffet*. We should note that post-buffet does not necessarily coincide with stall.

After describing our numerical approach in Sect. 2, we will validate our simulations of ONERA's OALT25 airfoil against those of Dandois et al. (2018) and experiments of Brion et al. (2017) at $Re = 3,000,000$ in the first part of Sect. 3. Then we will study Reynolds number effects in the second part of Sect. 3. Having confirmed all relevant phenomena at reduced Reynolds numbers of $Re = 500,000$, we will study Mach-number effects at moderate Re in Sect. 4, which also allows us to compare the present simulations with previous work on the V2C profile. Before concluding our paper, we will suggest a scaling approach for the intermediate frequency ('laminar buffet') mode and further scrutinise the underlying mechanism in Sect. 5.

2 Methodology

2.1 Flow Solver

For the present work, numerical simulations are performed using the in-house code, SBLLI (Yao et al. 2009), which has been well-validated and used for studies on shock-wave/boundary-layer interaction (Touber and Sandham 2009; Sansica 2015), subsonic wing sections (Jones et al. 2008; De Tullio and Sandham 2019), as well as transonic buffet (Zauner 2019; Zauner and Sandham 2020; Moise et al. 2022b). This code has shown good performance for massively-parallelised simulations using structured multi-block grids on several high-performance computer architectures. The compressible three-dimensional Navier–Stokes equations are normalised by the airfoil chord c , the freestream density ρ_∞ , streamwise velocity u_∞ , and temperature T_∞ and solved in a non-dimensional form using fourth-order finite difference schemes (central at interior and the Carpenter scheme (Carpenter et al. 1999) at boundaries) for spatial discretisation. The pressure is normalised by $\rho_\infty u_\infty^2$. A low-storage third-order Runge–Kutta scheme is used for temporal discretisation, where one convective time unit is defined as the ratio of the airfoil chord over the freestream velocity. A total variation diminishing (TVD) scheme is employed to capture features of shock waves (Sansica 2015). The TVD scheme is deactivated around the leading edge to avoid the formation of spurious structures, as discussed in Zauner et al. (2019). Zonal characteristic boundary conditions (Sandberg and Sandham 2006) are enforced at the outlet, whereas integral characteristic boundary conditions (Sandhu and Sandham 1994) are applied at the remaining outer boundaries.

We will use for the present contribution a Spectral-Error based Implicit Large-Eddy Simulation (SE-ILES) scheme. For this method, spectral error indicators are computed locally every N_E time steps according to Jacobs et al. (2018) and are used to control a sixth-order filter (Visbal and Gaitonde 2002) in order to remove scales, which are not sufficiently resolved by the grid. Further away from the airfoil, the sixth-order filter is permanently

activated to maintain numerical stability in regions of increased grid spacing. Details of this approach can be found in Zauner and Sandham (2019b), where this method has been validated against DNS for a transonic buffet test case and successfully applied in multiple studies (Zauner and Sandham 2020; Moise et al. 2022a, b).

2.2 Grid Generation

The grids used in the present study have been designed and generated using an open-source parametric grid-generation tool for high-fidelity grids developed at the University of Southampton (Zauner and Sandham 2018a, b). High-order polynomials are used to define the geometry of grid lines and corresponding grid-point distributions. Such body-fitted grids are not necessarily limited to a single geometry, as grid lines are designed with respect to their position (coordinates) and local curvature with respect to grid points along the airfoil contour. Therefore, it is possible to use grids with very similar characteristics and resolution for different airfoil geometries. Here, grids previously used for simulations of Dassault Aviation's V2C airfoil and already assessed in terms of spatial resolution (Zauner and Sandham 2019b, 2018b; Zauner et al. 2018), were adapted to the OALT25 geometry.

In the present work we will use two different CH-type grids for the OALT25 profile, referred to as 'standard' and 'refined' grids. The topology and resolution of the standard grid is very similar to grids used in Zauner and Sandham (2020) and Moise et al. (2022a) for the V2C airfoil and have been shown adequate to capture the main phenomena of interest. For both simulations, the C-block of the grid has a radius of $7.5c$, while the two H-blocks capture $5.5c$ of the wake behind the airfoil. The spanwise extent of the domain is limited to $0.05c$, which has been shown sufficient to capture transonic buffet, when comparing with test cases up to $L_z = 1.0c$. Frequencies match very well between simulations of different aspect ratios and experiments. However, buffet amplitudes can be underestimated in narrow-domain cases, oscillations can be more irregular, and conditions of on- and off-set need to be treated with care. However, we consider the underlying mechanism well captured by much cheaper narrow-domain simulations, which allow us more extensive parametric studies. The refined grid contains additional grid points within the region close to the airfoil surface and is only used for simulations at high Reynolds numbers. Close-ups are shown for grids in Fig. 1, plotting only every 15th grid point.

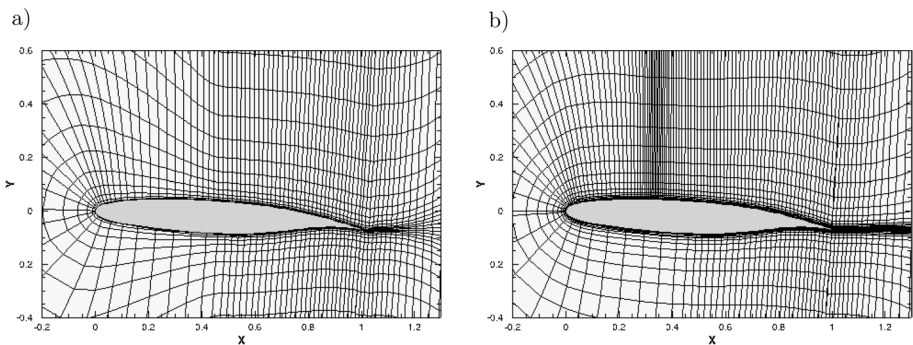


Fig. 1 Approximately every 15th grid point is shown for **a** the standard grid targeting $Re = 500,000$ and **b** a refined grid targeting $Re = 3,000,000$

The standard grid in Fig. 1a, consists of approximately 90 million points (one block of $1495 \times 550 \times 50$ points and two blocks of $799 \times 564 \times 50$), where the blunt trailing edge of $0.5c$ contains 30 grid points. The grid clustering is relatively denser close to the aerofoil surface, in its wake, and in the region where the shock wave is expected. The wall-normal and wall-tangential spacings at the airfoil surface vary between 1×10^{-4} to 1.7×10^{-4} and 4×10^{-4} to 2×10^{-3} , respectively.

The refined grid is used for a validation case at increased Reynolds numbers of $Re = 3,000,000$ only and contains approximately 200 million points (one block of $1935 \times 550 \times 100$ points and two blocks of $799 \times 564 \times 100$). For comparison, the grid of a validated simulation by Dandois et al. (2018), targeting the same Reynolds number, contained about 400 million grid points, for a two times wider domain with a larger wall-normal extent of $100c$. Around $x \approx 0.3$, it is notable that the grid is relatively denser in the wall-tangential direction. This would allow a future use of the same grid for studies with boundary-layer tripping applied, as done in Moise et al. (2022b).

The present grids contain roughly 3 times larger cells in streamwise and spanwise direction, compared to DNS resolutions in Zauner et al. (2019). Considering the test case at $Re = 500,000$ and $M = 0.735$, the wall-normal spacing does not exceed $\Delta y_w^+ = 1.2$ in the transition region $0.2 < x < 0.5$. Streamwise and spanwise wall spacings remain below $\Delta x_w^+ = 10.66$ and $\Delta z_w^+ = 6.76$, where the latter is important to capture streamwise-oriented vortices promoting rapid turbulent breakdown observed in DNS (Zauner et al. 2019). In the turbulent region the normalised spacing peaks at $x = 0.74$ with $\Delta y_w^+ = 1.83$, $\Delta x_w^+ = 10.85$, and $\Delta z_w^+ = 10.37$. Raising the Reynolds number for the same Mach number to $Re = 3,000,000$, the Δy^+ at the wall increases even to $\Delta y_w^+ = 5.5$ at $x \approx 0.8$. Streamwise and spanwise wall spacings reach at that point $\Delta x_w^+ = 33.22$ and $\Delta z_w^+ = 17.61$, respectively. Even though these values do not strictly follow the rule of $\Delta y^+ < 1$ in the fully turbulent aft section of the airfoil, it should be noted that the boundary layers are far from equilibrium and simulation results of interest agree well with reference literature, as shown in Sect. 3. In practice, the grid was iteratively improved to provide good resolution of shear layers further away from the wall, for which a simple y_w^+ criterion is not sufficient. For example, at a wall distance of $\Delta n \approx 0.01c$ ($y^+ \approx 400$), the cell spacing is only twice the size of the wall cell ($\Delta y^+ \approx 11$). The confirmation of adequate grid resolution for the standard grid to effectively capture the viscous sub-layer at a Reynolds number of 500,000 is provided in appendix A, which includes a study on grid refinement at the wall. Furthermore, the results obtained from simulations at a Reynolds number of 3,000,000 will be verified and validated in Sect. 3.

2.3 Fourier Spectral Analysis

We apply Fourier transformation techniques in order to analyse one-dimensional signals such as aerodynamic histories, after subtracting mean quantities. A typical simulation run time covers about 160 convective time units. Neglecting an initial transient of approximately 25 time units, results in a total signal length of 140 time units. Assuming a signal is split into 50% overlapping bins containing about 35 time units, each bin contains a sufficient number of cycles at intermediate frequencies (> 10 cycles for $St = 0.3$). However, with the same bin size low-frequency cycles are poorly captured. To overcome this limitation using Hanning windows for Welch's method (Welch 1967), we gradually decrease the number of bins (leading to an increase in bin size) as frequency is reduced. The resulting

‘composed’ spectra retain the low-frequency content, while reducing the noise in the high-frequency content.

To illustrate the robustness of this strategy, an example of such a composed Fourier spectrum is shown in Fig. 2 considering a representative C_L signal at $M = 0.71$. The red solid curve denotes the Welch spectrum using 35 time units per bin. For Strouhal numbers $St > 0.1$, modes are selected only from the red spectrum. The low-frequency part of the spectrum ($St < 0.1$) is expanded by modes from spectra using larger bins containing 47 (blue curve), 70 (cyan curve), and 140 time units (green curve). This leads to the final composed spectrum, marked by black symbols.

2.4 Spectral Proper Orthogonal Decomposition

Coherent features in the flow field were extracted using spectral proper orthogonal decomposition (Lumley 1970; Glauser et al. 1987; Towne et al. 2018). This decomposition finds an orthonormal basis that ideally represents a given ensemble of realisations of a stochastic process. It can be shown that the ideal basis which is spatio-temporally coherent consists of the eigenfunctions, ψ , of the cross-spectral density tensor, S (Towne et al. 2018), which satisfy

$$\int_{\Omega} S(x, x', St)W(x')\psi_i(x', St)dx' = \lambda_i(St)\psi_i(x, St). \tag{1}$$

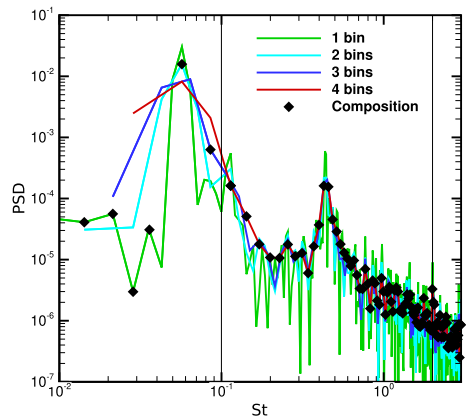
Here, $x, x' \in \Omega$ are any two points in the domain, Ω , St is the frequency/Strouhal number, W is a weight function related to the relevant inner product, λ is the eigenvalue and the subscript i denotes the i -th eigenvalue/eigenfunction. The index i is such that λ_i are sorted in descending order, implying that $i = 1$, represents the most-energetic mode. Thus, the eigenfunction $\psi_i(x, St_0)$ represents the spatial structure of an SPOD mode that oscillates in time with a frequency, St_0 . The spatio-temporal variation of this mode is given by

$$\zeta_i(x, t) = \Re(\psi_i \exp(i2\pi St_0 t)), \tag{2}$$

where $\Re(\cdot)$ denotes real part and t refers to time.

The numerical code provided in Schmidt and Towne (2019) was used for performing SPOD. It adopts the Welch approach for Fourier transforms and is a streaming algorithm,

Fig. 2 Welch spectra of lift coefficient at $M = 0.71$. The red curve denotes the spectrum using bins of about 35 convective time units. Blue, cyan, and green curves denote Welch spectra with bins containing 46, 70, and 140 time units, respectively. Symbols mark Fourier modes, which are selected for a composed spectrum



which computes only the first few of the most-energetic modes. Here, only the first two dominant modes are examined (i.e., $i = 1$ and 2). Moise et al. (2022a) have shown clear dominance of the first mode, when reconstructing flow features associated with transonic buffet. Therefore, we will limit our modal analysis to the dominating first mode and do not consider higher modes. The domain chosen is the $z = 0$ plane. Snapshots at different time instants are constructed by arranging the density, velocity components and pressure on this plane into a column vector. The snapshots were sampled at time intervals of 0.064 (sampling frequency $F_s \approx 15$). To compute the Fourier transform using the Welch approach, snapshots are divided into blocks of $T_B \approx 40$. Note that the lowest frequency associated with coherent oscillations occurs for $St > 0.05$, implying that at least two oscillation cycles are captured in a block. The weighting function, \mathbf{W} is chosen based on the approximate volume associated with each grid point. To compare the spatial structures of SPOD modes obtained for different cases, the phase within an oscillation cycle, $\phi = 2\pi St_0 t$, of the spatio-temporal SPOD mode,

$$\zeta(\mathbf{x}, \phi) = \Re(\boldsymbol{\psi}(\mathbf{x}, St_0) \exp(i\phi)), \quad (3)$$

must be chosen appropriately. Here, we choose $\phi = 0$ as occurring when $\Im(\boldsymbol{\psi}(x_{TE}, St_0) \exp(i\phi)) = 0$, where $\Im(\cdot)$ corresponds to the imaginary part and x_{TE} represents the point on the upper corner of the trailing edge. Thus, contours shown in Figs. 6 and 10 are at $\phi = 0$. Movies showing the spatial structure's variation with phase are provided in the supplementary material. Further details can be found in Moise et al. (2022a and 2022b).

2.5 Test cases

Following on the work of Dandois et al. (2018), we consider ONERA's OALT25 laminar-flow wing geometry at a fixed angle of attack $\alpha = 4^\circ$ for all the present simulations. The fluid is considered to be air, which can be modelled at present conditions as a perfect gas with a specific heat ratio of $\kappa = 1.4$, satisfying Fourier's law of heat conduction with a Prandtl number of $Pr = 0.72$. It is also assumed to be Newtonian and satisfying Sutherland's law, with the Sutherland coefficient as $T_s = 110.4$ at a reference temperature $T_r = 268.67 K$.

Starting from $M = 0.735$ and $Re = 500,000$, either Mach or Reynolds numbers are varied in order to study their effect on low- and intermediate-frequency oscillations separately. An overview of the test matrix and information about dominant spectral peaks is provided in Table 1.

3 Reynolds-Number Effect for $M = 0.735$

In this section, we consider a case in which intermediate-frequency oscillations are well established at wind-tunnel conditions with $M = 0.735$ and $Re = 3,000,000$ and progressively reduce the Reynolds number down to $Re = 500,000$. Fourier spectra and SPOD are used to identify and characterise the principal modes considered in this study and their sensitivity to Re . We can then justify the use of more cost-effective simulations at moderate Re in subsequent sections. Since the $Re = 3,000,000$ case is the same as that previously studied by Dandois et al. (2018) we start by making a cross validation between the results from two separate codes.

Table 1 Test matrix

<i>Re</i>	<i>M</i>	Low-frequency		Intermediate-frequency		Grid
		<i>St</i>	PSD(<i>C'_L</i>)	<i>St</i>	PSD(<i>C'_L</i>)	
3,000,000	0.735	0.082	0.00325	0.924	0.00327	Refined
3,000,000	0.735	0.091	0.00780	1.039	0.00349	Standard
2,000,000	0.735	0.080	0.01097	0.875	0.00196	Standard
1,000,000	0.735	0.081	0.05455	0.535	0.00062	Standard
500,000	0.735	0.082	0.15385	0.393	0.00030	Standard
500,000	0.710	0.060	0.01580	0.427	0.00016	Standard
500,000	0.700	0.035	0.00068	0.417	0.00012	Standard
500,000	0.690	0.039	0.00019	0.469	0.00002	Standard
500,000	0.680	0.060	0.00004	0.595	0.00002	Standard
500,000	0.670	0.035	0.00002	0.831	–	Standard
500,000	0.750	0.104	0.06275	0.469	0.00015	Standard
500,000	0.800	0.208	0.00138	0.547	0.00004	Standard

3.1 Cross-validation at Re = 3,000,000

Studying the OALT25 profile, Dandois et al. (2018) observed oscillations which were fundamentally different from those corresponding to cases with tripped boundary layers. Test cases subjected to fully-turbulent separation bubbles and shock/boundary-layer interactions typically show large-scale shock motion and lift fluctuations at low Strouhal numbers around $St < 0.1$. For free-transitional test cases, however, shock oscillations were more localised and mainly limited to the shock foot. These lift oscillations occurred at significantly higher frequencies corresponding to $St \approx 1.1$. These observations were confirmed by wind-tunnel experiments at similar free-transitional conditions of $M = 0.735$ and $Re = 3,000,000$ (Brion et al. 2019), where an additional peak was observed in spectra of lift-fluctuations at significantly lower frequencies around $St \approx 0.06$, which is in the range of typical buffet frequencies observed for the OALT25 profile.

Figure 3 shows (a) distributions of mean wall-pressure coefficient, $\overline{C_p}$, the root-mean-square of fluctuating component, $C'_{p,rms}$, and (b) histories of lift coefficient C_L for various Reynolds numbers. Statistical values of coefficients are computed according to

$$\overline{C_x} = \frac{1}{N} \sum_{n=1}^N C_x^n, \quad C'_x = C_x - \overline{C_x}, \quad \text{and} \quad C'_{x,rms} = \sqrt{\frac{1}{N} \sum_{n=1}^N (C_x^n - \overline{C_x})^2}, \quad (4)$$

where N denotes the total number of data points. For now, we only focus on the blue, magenta, and green curves corresponding to $Re = 3,000,000$. The blue and magenta curves denote the present simulation results using standard (90 million grid points) and refined (200 million grid points) grids respectively, while the green curve corresponds to LES results from Dandois et al. (2018) using ONERA’s second-order accurate CFD code elsA (400 million grid points, but for a larger domain, see Sect. 2.2). Experimental measurements from Brion et al. (2019) are denoted by red dots and error bars corresponding to 5% pressure variations of the freestream according to $\Delta C_p = \epsilon p_\infty 2/(\rho_\infty u_\infty^2)$, where $\epsilon = 0.05$. Overall, the $\overline{C_p}$ distributions at increased Re agree well, despite small differences in $\overline{C_p}$ levels over the fore part and shock position. The former may be due to the influence of

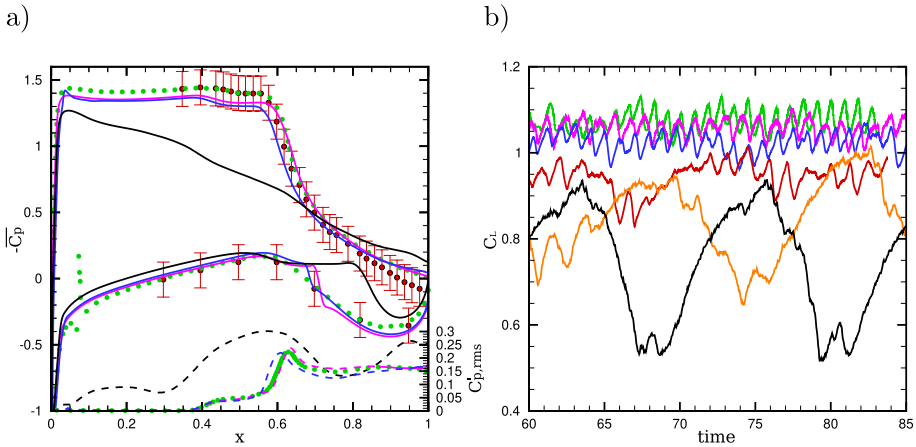


Fig. 3 **a** Mean wall-pressure coefficient $\overline{C_p}$ (solid curves) and root-mean-square of fluctuation $C'_{p,rms}$ (dashed curves) as a function of x and **b** time histories of C_L are shown for a constant free-stream Mach number $M = 0.735$ and various Reynolds numbers, $Re = 500,000$ (black), $Re = 1,000,000$ (orange), $Re = 2,000,000$ (red) and $Re = 3,000,000$ (blue) using the standard grid. The magenta curves correspond to a simulation at $Re = 3,000,000$ using a refined grid. For comparison, C_p and the C_L history are extracted from Dandois et al. (2018) and denoted by green symbols and curves, respectively. Experimental measurements extracted from Brion et al. (2019) are added to **b** denoted by red dots including error bars corresponding to $\Delta C_p = \epsilon p_\infty 2/(\rho_\infty u_\infty^2)$, where $\epsilon = 0.05$

boundary-layer tripping applied on the pressure side for the case of Dandois et al. (2018) and Brion et al. (2019), while the mean shock position appears to be relatively sensitive to the grid resolution. However, the dynamic behaviour of the flow is hardly affected, which is indicated by the good agreement between dashed lines corresponding to $C'_{p,rms}$ as a function of x . While the $C'_{p,rms}$ peaks arise from shock-wave oscillations centered around $x \approx 0.63$, the plateau further upstream ($0.4 < x < 0.6$) results from pressure fluctuation within the laminar separation bubble, as will be discussed later in more detail. Also lift fluctuations agree well in Fig. 3b, where the same colour code is used for different cases. All three cases exhibit clear intermediate-frequency fluctuations (period approximately equal to one time unit), which are slightly modulated by low-frequency undulations (period approximately equal to 12 time units).

To better assess the frequency content of these lift fluctuations, Fig. 4a shows Fourier spectra, with spectral peaks observed in experiments of Brion et al. (2019) indicated by vertical black broken lines. Again, we observe a good agreement between blue, magenta and green curves showing intermediate-frequency peaks in spectra in the range of $0.9 < St < 1.1$ (highlighted by square symbols) with similar power-spectral densities and associated harmonics at $St \approx 2$. The present simulations show a weak peak at low frequencies $St \approx 0.08$ (circles), which is below the cut-off frequency of the spectrum associated with the work of Dandois et al. (2018). This low-frequency bump is slightly above the Strouhal numbers, $St \approx 0.06$, observed in wind-tunnel tests of Brion et al. (2019). Boundary-layer tripping on the pressure side is not expected to impact the frequency significantly (Moise et al. 2022b). Even though Zauner and Sandham (2020) showed minor sensitivity of low frequencies to the spanwise domain extent, we cannot rule this effect out. The difference may instead be due to wind-tunnel confinement effects such as the presence of side and top walls, which are not captured in the current simulations. Nevertheless, considering

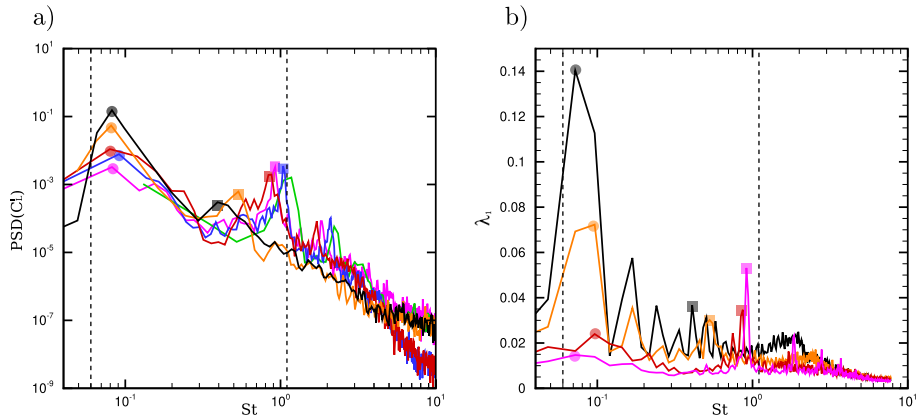


Fig. 4 **a** Composed Fourier spectra of C_L fluctuations are compared with dominant spectral peaks of experimental results by Brion et al. (2019) indicated by vertical broken lines and simulation data by Dandois et al. (2018). **b** Leading eigenvalues λ_1 of spectral proper orthogonal decomposition of 2D snapshots are shown for present simulations. Colours correspond to Fig. 3

the experimental and numerical challenges when comparing wind-tunnel test and simulation results, the agreement with respect to the low-frequency mode is good.

Although the blue curve in Fig. 4a shows some quantitative differences compared to cases using finer grids (the magenta and green curves), we still capture the same physical flow phenomena with very similar scales and amplitudes. This gives us confidence that the standard grid is well suited for simulations carried out at lower Reynolds numbers. Furthermore, we have some justification for the use of narrow domains and periodic boundary conditions in recovering the main flow characteristics observed in wind-tunnel tests.

3.2 Reynolds-number effects

After having verified and validated our observations at high Reynolds numbers of $Re = 3,000,000$ and $M = 0.735$, we consider a set of simulations at the same Mach number, but decreasing Reynolds numbers down to $Re = 500,000$ to study Re scaling effects. All these simulations use the standard grid.

Looking again at Figs. 3 and 4, simulations at $Re = 2,000,000$, 1, 000, 000, and 500, 000 are denoted by red, orange, and black curves, respectively. Looking at Fig. 3b, we can see that low-frequency oscillations strengthen with decreasing Reynolds numbers, indicating established buffet at low Re and a trend towards buffet offset at high Re for a fixed Mach number and angle of attack. In previous studies of the V2C profile, a similar trend was observed: while the flow was fully stalled at $Re = 200,000$, buffet was fully developed at $Re = 500,000$ before it weakened again towards higher Re (Zauner et al. 2019; Moise et al. 2022a) and eventually dies out (Szubert et al. 2016). An opposite trend is observed for intermediate-frequency oscillations, as they become less pronounced during high-lift phases when decreasing Re . At $Re = 500,000$, we eventually observe large-amplitude lift oscillations characteristic of transonic buffet. Averaging of dynamic effects associated with shock-wave motion leads to a rather smooth $\overline{C_p}$ distribution on the suction side shown in Fig. 3a, where the pressure change associated with the main shock wave is smeared out. Consequently, the $C'_{p,rms}$ peak turns into a broad bump and increased pressure fluctuations

are even observed in the fore part of the airfoil. On the pressure side we observe a plateau in $\overline{C_p}$ at $x \approx 0.7$ corresponding to a laminar separation bubble. Looking at spectra shown in Fig. 4a, for decreasing Reynolds numbers we can observe a clear low-frequency peak evolving at a rather constant Strouhal number of $St \approx 0.08$. The intermediate-frequency peak, however, decreases in magnitude and shifts towards lower Strouhal numbers, reaching $St \approx 0.4$ at $Re = 500,000$. Oscillations at similar intermediate frequencies have been also observed for Dassault Aviation's V2C profile at the same Reynolds number, but were less pronounced (Zauner and Sandham 2019a).

After having assessed the effect of low- and intermediate-frequency phenomena on aerodynamic wing characteristics, we would now like to study the spatial structure of associated phenomena. Figure 4b shows leading eigenvalues λ_1 of SPOD of two-dimensional snapshots at different Reynolds numbers. These spectra look qualitatively very similar to those in Fig. 4a. The SPOD eigenvalue spectra are less smooth compared to the Fourier spectra of C_L , due to the fixed number of bins used in the SPOD, but the trends in the low and intermediate frequency modes are the same. For the lower Re case, harmonics of the buffet mode coexist in the intermediate-frequency range, which makes the separation of both phenomena very difficult using SPOD. In contrast to the lift spectra, SPOD contains more information about the wake behind the airfoil and we can observe an additional broadband bump at $St \approx 2$, where distinct modes appear at higher Reynolds numbers very close to harmonics of intermediate-frequency phenomena. These high-frequency phenomena are associated with a von-Karman vortex street and have also been observed and discussed by Moise et al. (2022a) for the V2C airfoil.

Before discussing the shape of dominant coherent structures extracted by SPOD, we first consider the contours of local time- and span-averaged Mach number in Fig. 5 for representative Reynolds numbers of (a) $Re = 3,000,000$ and (b) $Re = 500,000$ and instantaneous fields in (c) and (d) at high and low lift conditions respectively for the lower Re case. Based on previous work on V2C wing sections with different domain sizes at similar conditions

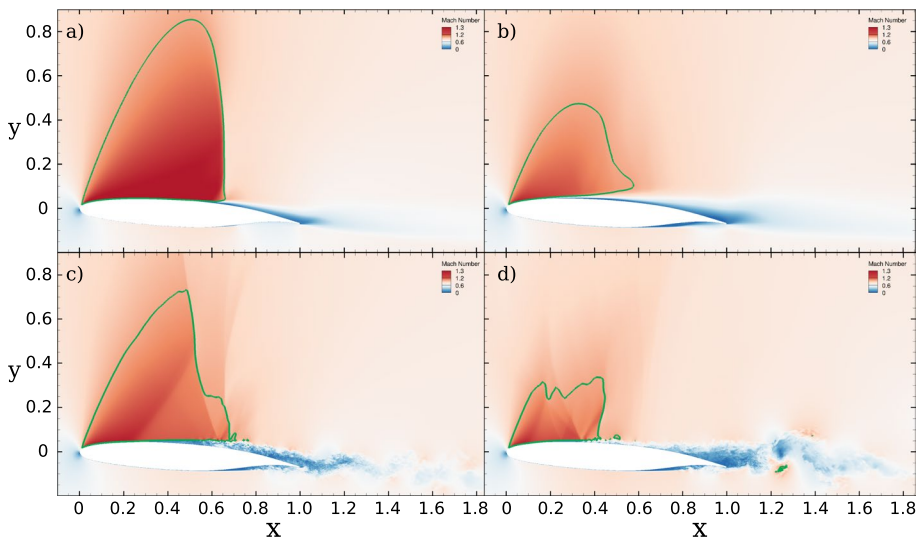


Fig. 5 Local mean Mach-number contours shown for **a** $Re = 3,000,000$ and **b** $Re = 500,000$ at $M = 0.735$. Instantaneous Mach-number contours shown for $Re = 500,000$ at $M = 0.735$, representative for **c** high-lift and **d** low-lift phases at $t = 64.5$ and 69 , respectively. The green curves denote the sonic lines, where $M = 1$

(Zauner and Sandham 2020; Moise et al. 2022a) that showed minor variations of coherent features in the spanwise direction, it is sufficient to focus the present work on two-dimensional cross sections (instantaneous at $z = 0$ as well as span-averaged), which are obtained by 3D simulations. For the high Re case, we observe a large supersonic region, delineated by the green sonic curve with a distinct shock wave at $x \approx 0.6$. A region of high velocity occurs just outside the boundary layer near the mid-chord location, leading to a small bump in the sonic line extending the supersonic region slightly in the downstream direction. Similar features have been observed in experiments by Pearcey et al. (1968) and are often referred to as “supersonic tongue” Shock (2011). For the $Re = 500,000$ case, this bump is more pronounced and extends further away from the surface, which is an indicator for significant flow separation (this can be confirmed, looking at C_f distribution in Fig. 17 in the appendix). Compared to the high Re case, the time-averaged supersonic region appears smaller and smoother due to large-scale unsteadiness. The global flow field at higher Re is not subjected to such significant variations (see C_L histories) and therefore no instantaneous snapshots are shown for brevity. The instantaneous snapshot of the $Re = 500,000$ case at the high-lift phase Fig. 5c demonstrates the high-frequency small-scale structures. Behind the shock foot the boundary layer thickens and undergoes rapid transition to turbulence, which is again confirmed in C_f distributions of Fig. 17 in the appendix. Then, in the wake region behind the airfoil we see a clear von-Karman vortex street forming. During low lift phases, we observe in Fig. 5d flow features that are reminiscent of stall. We should mention at this point that all instantaneous quantities and snapshots of this work are taken at $z = 0$, while statistical values are averaged in the spanwise direction. As already noted by Zauner and Sandham (2020), low-frequency oscillations at the present flow conditions show strong spanwise coherence. This is confirmed in the present simulations even for intermediate-frequency oscillations associated with bubble instabilities, as shown in Appendix C (Fig. 18).

Looking now at SPOD modes showing density-fluctuation contours in Fig. 6, which correspond to dominant flow oscillations around the mean flow, we can see low- (left column)

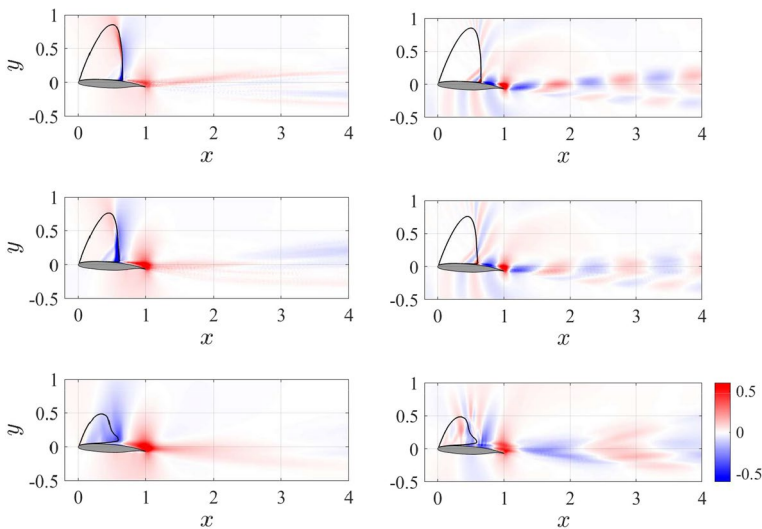


Fig. 6 Density contours of SPOD modes associated with peaks at low (left) and intermediate (right) frequencies, phased at the trailing edge, are shown for $Re = 3,000,000$ (top), $Re = 2,000,000$ (middle), and $Re = 500,000$ (bottom)

and intermediate-frequency modes (right column) for representative Reynolds numbers of $Re = 3,000,000$ (top), $Re = 2,000,000$ (middle), and $Re = 500,000$ (bottom). For low-frequency phenomena at high Reynolds numbers, we can confirm rather localised oscillations of the shock wave accompanied by fluctuations of the trailing-edge region, which are 180° out of phase. This phase relation has been examined and confirmed by Moise et al. (2022b) for multiple airfoil geometries and reference literature. Structures in the wake correspond to periodic up- and downward deflection ('flapping'). When reducing the Reynolds number to $Re = 2,000,000$, we observe a λ -structure occurring within the supersonic region with the leading leg associated with boundary-layer separation. Although less pronounced, this lambda structure also exists at $Re = 3,000,000$. The mode shape for the $Re = 3,000,000$ case has a striking resemblance to the globally unstable mode reported in Sartor et al. (2018) (see their Fig. 12a) for transonic buffet on an OAT15A aerofoil under fully-turbulent conditions. This serves as the justification for referring to the low-frequency modes observed here for free-transition conditions as transonic buffet modes.

The blue regions around shock and separation waves become thicker for decreasing Re , and eventually spread over the entire supersonic region for $Re = 500,000$. The spatial organisation of SPOD modes at intermediate frequencies are very similar for the high- Re test cases. For $Re = 500,000$, however, we observe a larger wavelength since the Strouhal numbers have decreased (recalling the spectra in Fig. 4). At higher Re , modal features within the supersonic region are limited to oscillations around the separation wave, whereas for $Re = 500,000$, the mode structure extends beyond the supersonic region.

While modal structures and frequencies in Figs. 4b and 6, respectively, are consistent for both modes at low and high frequencies across the considered range of Re , particularly the low-frequency buffet mode changes significantly in amplitude. This can be explained by changing onset conditions towards increased Reynolds numbers. The general trend has been shown in experimental studies by McDevitt et al. (1976) and Schauer and Schreyer (2023) for free and forced transition cases, respectively. Also numerical studies by Szubert et al. (2016) and Moise et al. (2022a) showed that buffet onset occurs at larger angles of attack at increased Re for the V2C profile at similar conditions. Even though it has not been confirmed yet for the OALT25 profile, we assume also for the present test case increased buffet amplitudes at higher angles of attack at $Re \approx 3$ million.

Despite some quantitative variations in wave lengths, Strouhal numbers and extents of regions covered by the mode shape, we observe similar mode structures at various Re . Therefore, by studying the moderate Re case in more detail, we expect to be able to project our conclusions at least to Re typical of wind-tunnel experiments.

4 Mach-Number effects at Moderate Reynolds Number $Re = 500,000$

After having validated our results against reference literature and having confirmed the existence of multiple flow phenomena of interest at moderate as well as high Reynolds numbers, we will now study their Mach-number sensitivity for a fixed $Re = 500,000$.

Figure 7a shows time-averaged lift coefficients as a function of freestream Mach number M , denoted by the black curve. Grey curves above and below indicate respectively maximum and minimum instantaneous lift coefficients. Following the colour-code of the Mach number points shown on Fig. 7a, representative C_L histories are shown in Fig. 7b. We can distinguish between two main regimes for present test cases, here denoted as *pre-buffet* ($0.67 < M < 0.7$) and *established buffet* ($M > 0.7$). As civil

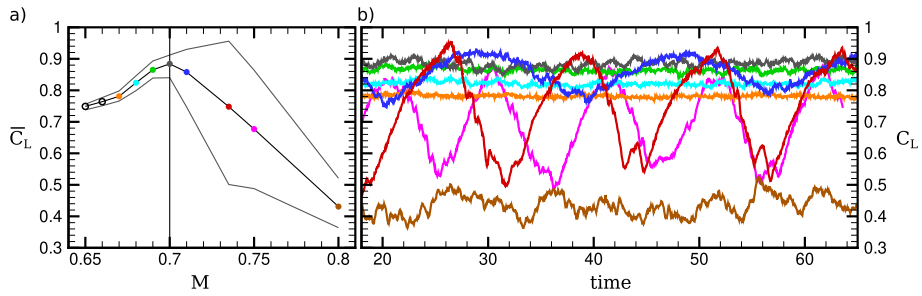


Fig. 7 **a** The black curve shows time-averaged lift coefficient $\overline{C_L}$ as a function of Mach number, where coloured circles denote simulation data points. Curves below and above show respectively minimum and maximum lift coefficient. Correspondingly coloured histories of C_L are shown in **(b)**. The black vertical line indicates the simulation Mach number, where maximum mean lift is observed and where large-scale oscillations start increasing dramatically. Only statistical data is shown for $M < 0.67$ (black circles in **a**), as unsteady phenomena are weak

aviation industry is mainly interested in characterising and predicting buffet onset in order to avoid critical flight conditions, we focus our current work on *incipient buffet* observed at $M = 0.7$, where the mean lift peaks and low-frequency phenomena set in.

In the pre-buffet regime, the mean lift increases gradually due to compressibility effects (e.g., thinner boundary layers). Initial broad-band fluctuations strengthen and become more regular with increasing M , while minimum as well as maximum C_L values increase. Approaching $M = 0.70$, fluctuation amplitudes reach 8% of $\overline{C_L}$, while the mean lift remains approximately centered between the extreme values. Looking at Fig. 7b, we can observe slight undulations of the grey curve with a period of $\tau > 20$ time units corresponding to Strouhal numbers $St < 0.05$, compared to the more pronounced oscillations in the intermediate-frequency range corresponding to $St \approx 0.4$ ($\tau \approx 2.5$). Moving into the developed buffet regime, low-frequency oscillations strengthen rapidly with increasing Mach numbers, progressively dominating the global flow dynamics. While lift maxima further increase with M , even though at a much lower rate, lift minima drop dramatically leading to an overall decrease of mean lift. At $M = 0.735$, oscillation amplitudes reach more than 68% of $\overline{C_L}$. Further increasing M eventually leads to linearly decreasing maximum C_L values, while also the buffet oscillation amplitude decays. In this study, the maximum Mach number of $M = 0.8$ is close to buffet offset and not further increased. It is noted that buffet boundaries vary with Reynolds number, as shown in Sect. 3.

Figure 8a shows Fourier spectra of the C_L histories that were shown in Fig. 7b. Even for low Mach numbers ($M < 0.7$), we observe an increased low-frequency content in the spectra, but no distinct peaks. In this *pre-buffet* regime, we observe mainly the development of a clear spectral peak at intermediate frequencies around $St \approx 0.4$, similar to those reported in the previous section. For $M < 0.7$, this intermediate-frequency peak slightly decreases with increasing Mach numbers. At $M = 0.7$, where a distinct peak arises at low frequencies $St \approx 0.04$, the sharp peak at intermediate frequencies does not significantly change but we observe the presence of an additional peak at $St \approx 0.3$, which is associated with the sawtooth-like shape of the C_L history at $M = 0.7$. With further increases in the Mach number we observe an increase of Strouhal numbers as well as power-spectral densities associated with the low-frequency phenomenon and it becomes

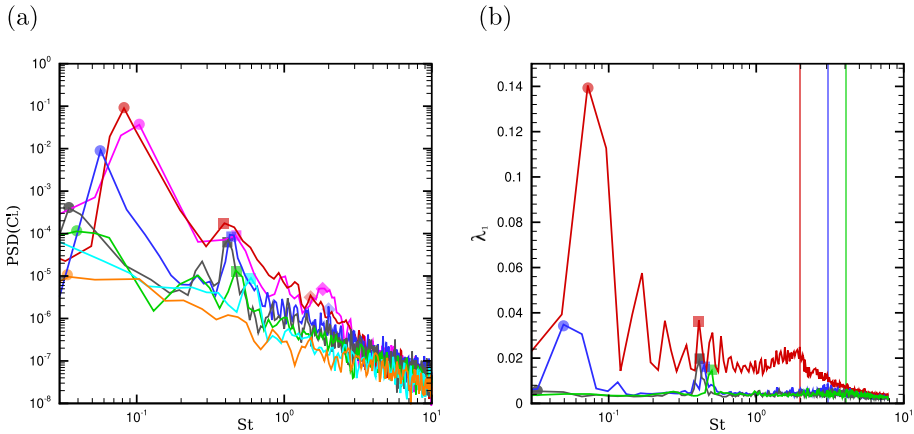


Fig. 8 **a** Composed Welch spectra of C_L fluctuations and **b** leading eigenvalues from SPOD of 2D snapshots for $M = 0.67$ (orange), $M = 0.68$ (cyan), $M = 0.69$ (green), $M = 0.70$ (grey), $M = 0.71$ (blue), $M = 0.735$ (red), and $M = 0.75$ (magenta)

increasingly difficult to separate out the intermediate-frequency. For $M > 0.735$, the amplitudes of low-frequency oscillations start decreasing.

We now want to analyse the spatial structures associated with these unsteady flow phenomena. Figure 8b shows corresponding spectra of the leading eigenvalues as a function of Strouhal number obtained by SPOD for representative Mach numbers between $M = 0.69$ and $M = 0.735$. These spectra look qualitatively similar to those in Fig. 8a. For $M = 0.735$, harmonics of the buffet mode coexist in the intermediate-frequency range, which again makes the separation of both phenomena very difficult using SPOD. It is interesting to see that, on the one hand, during the incipient buffet phase at $M = 0.7$, the low-frequency content in global flow oscillations is barely visible in Fig. 8b and negligible compared to phenomena at higher frequencies. On the other hand, the C_L spectrum of the grey curve in Fig. 8a reaches its maximum at the low-frequency peak. Considering the fact that incipient buffet can be observed in spectra based on surface pressure before its spectral mode dominates the surrounding flowfield, we can infer that the low-frequency phenomenon has its origin near the airfoil surface.

For $M = 0.70$ and $M = 0.71$, we have two test cases where the low- and intermediate frequencies are well separated in frequency and the intermediate-frequency oscillations are very similar despite the rapid onset of low-frequency buffet. This is strong evidence that the phenomena arise independently. This would be more difficult to prove at higher Re . At $Re = 3,000,000$, it was shown in experimental investigations by Brion et al. (2019) that the amplitude of low-frequency oscillations appears much less sensitive to M . Even at $M = 0.75$, power-spectral densities of low-frequency oscillations remained more than two orders of magnitude lower compared to intermediate-frequency fluctuations.

Before discussing the modal shapes associated with dominant flow structures at multiple scales for our cases of interest, we introduce the mean-flow characteristics near buffet onset. Figure 9 shows time- and span-averaged Mach contours for (a) incipient buffet at $M = 0.70$ and (b) developed buffet at $M = 0.71$, where the supersonic regions are delineated by green sonic lines ($\overline{M}_{loc} = 1$). In both cases we distinguish two lobes in the upper boundary of the sonic line. With an increase in the freestream Mach number to $M = 0.71$, the supersonic region grows in height and length, while the shock wave moves downstream.

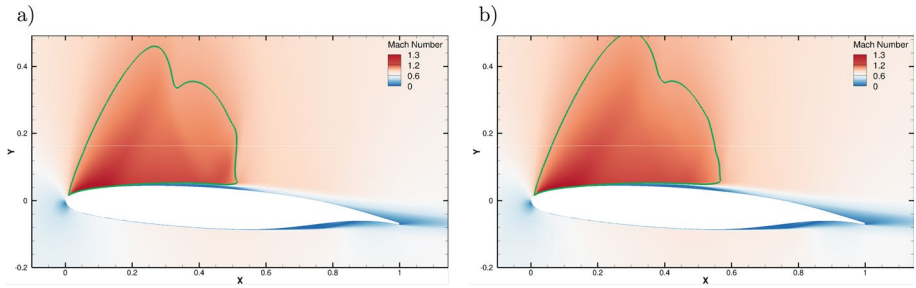


Fig. 9 Time- and span-averaged Mach number contours shown for **a** $M = 0.70$ and **b** $M = 0.71$ at $Re = 500,000$ within the range of $[0, 1.3]$. The green curves denote sonic lines of $M_{loc} = 1$

For $M \geq 0.71$, the final normal shock bends more upstream with increasing wall distance and the corresponding gradient becomes smoother due to the averaging effect. Shock-induced separation phenomena increase with increasing free-stream Mach numbers so that the re-circulation bubble becomes significantly thicker near the shock foot. Nevertheless, considering that the unsteady characteristics are very different, as shown in C_L histories, it is notable that both contour plots of Fig. 9 are qualitatively very similar.

To assess dominant density fluctuations around the mean flows for incipient and developed buffet conditions, Fig. 10 shows SPOD modes at $M = 0.70$, 0.71 , and 0.735 for the OALT25 profile. In addition, the bottom row of plots shows corresponding SPOD modes of the V2C profile obtained in Moise et al. (2022a) at $M = 0.735$ and the same Re and α . Time-averaged sonic curves are indicated by black curves. Left-hand-side, middle, and right-hand-side columns correspond to low-, intermediate-, and high-frequency modes, respectively. These modes are also indicated by squares (low-frequency), circles (intermediate-frequency), and vertical lines (high-frequency) in the spectra of Fig. 8b. Such SPOD modes allow us to assess the regions associated with large fluctuations of the flow field around its mean flow. Movies are available in the supplementary material and online (<https://youtu.be/uDQ3QktjveE>).

Looking at the low-frequency modes, we can observe at $M = 0.70$ and 0.71 the mode shapes becoming focused around the final shock wave that terminates the supersonic region. Density fluctuations of the λ -shock structure appear to be in phase with oscillations of the final shock wave and out of phase with the trailing edge. When buffet fully develops, localised regions of high amplitudes become smeared out, while fluctuation amplitudes around the trailing edge on both sides intensify and spread into the wake. Even though the buffet mode occurs for the V2C profile at a higher frequency of $St = 0.15$ compared to the OALT25 test case ($St = 0.082$), the mode shapes look very similar. As Moise et al. (2022b) has already established the connection between the V2C mode and the globally unstable buffet mode of Crouch et al. (2007), we expect the same underlying mechanism for the present low-frequency buffet mode of the OALT25 profile. Similar to Moise et al. (2022a), we do not observe modal features associated with acoustic waves at low frequencies, which contradicts the general validity of acoustic feedback models proposed by Lee (1990). Furthermore, RANS-based global stability analysis, which appears to model buffet well (Crouch et al. 2007, Sartor et al. 2018, Plante and Laurendeau 2022, Sansica et al. 2022), cannot account for upstream-propagating acoustic waves with time-dependent amplitudes. Also for unsteady RANS simulations, low-frequency oscillations do not appear sensitive to selective frequency damping between shock and trailing edge. Even though Feldhusen-Hoffmann et al. (2021) observe modulation of vortex shedding by low-frequency shock

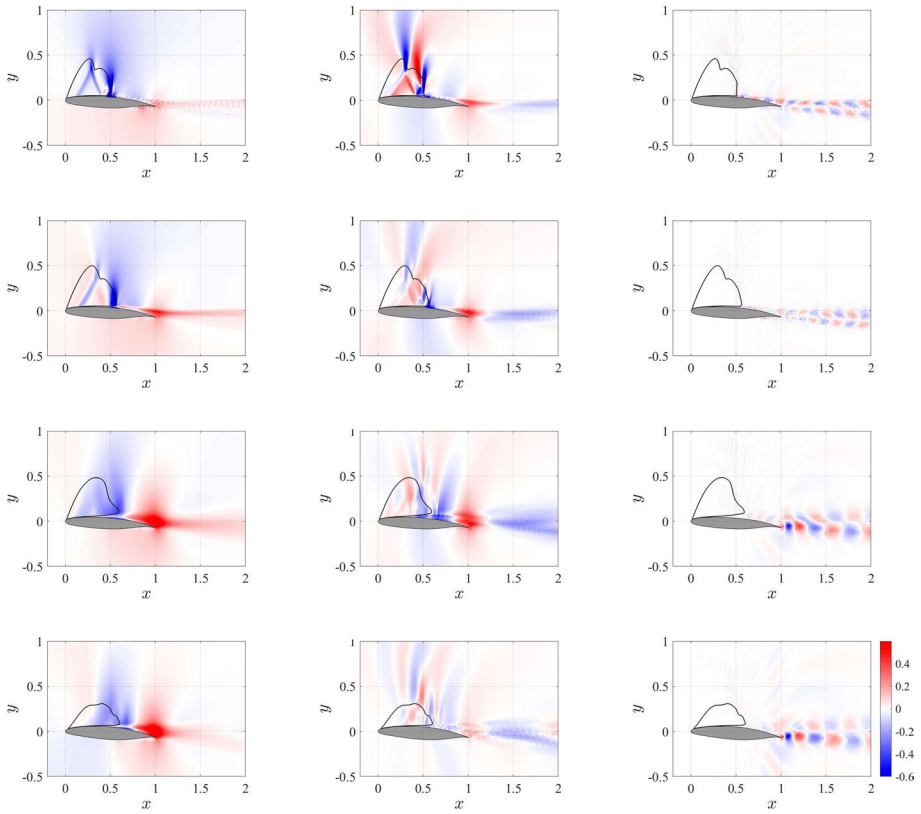


Fig. 10 SPOD modes associated with peaks at low (left), intermediate (middle) and high (right) frequency, shown using contour plots of the real part of the density field for $M = 0.70$ (top), $M = 0.71$ (second row), and $M = 0.735$ (third row). Blue and red contours respectively denote values below and above mean-flow in the range of $[-0.6, 0.6]$. Corresponding SPOD modes for the V2C profile are shown in the bottom row for the same Re and α for $M = 0.735$ (Moise et al. 2022a)

motion, it is not possible to conclude on causality. In the light of recent studies linking transonic buffet with incompressible low-frequency oscillation (Moise et al. 2023), the shock motion may well be a consequence rather than the cause of low-frequency instabilities.

While low-frequency oscillations within the supersonic region are mainly in phase for $M = 0.70$, we observe that intermediate-frequency oscillations cause significant changes of the shape of shock structures. The main terminating shock and the leading leg of the λ structure are not in phase, which is at least one distinguishing feature compared with the transonic buffet mode. Similar to the DMD mode of the V2C profile at $M = 0.7$ reported in Zauner and Sandham (2019a), weak peaks can also be observed at a similar frequency of $St = 0.6$ in SPOD spectra reported in Moise et al. (2022a) for Mach numbers $M = 0.7$ and $M = 0.735$. Besides the fact that those modes also show no significant sensitivity to M , they look qualitatively similar to corresponding SPOD modes of the present OALT25 profile. The differences in terms of amplitude may well be due to geometric characteristics leading to significant differences in mean-flow (indicated by sonic lines) and separation-bubble properties. In contrast to the OALT25 cases shown here, the absence of clear intermediate-frequency oscillations at pre-buffet conditions for the V2C profile indicates that

onset properties of this instability can vary for different airfoil geometries independently of those associated with transonic buffet.

High-frequency phenomena are predominantly located within the wake, taking the form of a von-Karman vortex street. The structures can be traced upstream to the separation point and also appear to interact with the trailing edge, causing weak acoustic structures in the SPOD mode. These structures, labelled as *wake modes*, agree well for OALT25 and V2C airfoils and were described in detail in Moise et al. (2022a). They will not be discussed further here, other than to note that they are distinct from the buffet and intermediate-frequency modes and appear at a lower frequency than the structures associated with transition to turbulence ($St > 10$). The present wake modes agree well with experimental observations by D’Aguanno et al. (2021), where vortex shedding was observed at $St \approx 2.2 - 3$. Although it was suggested in Moise et al. (2022a) based on results from the V2C profile that these wake modes might be the cause for the oscillations reported in Dandois et al. (2018), the present direct examination of the OALT25 profile clearly shows that the intermediate-frequency modes (and not the wake modes) are the cause.

5 Analysis of Intermediate-Frequency Mode

While the low-frequency mode is clearly identified as conventional transonic buffet and the higher frequency modes are explainable as von-Karman wake modes, the mechanism of the intermediate-frequency remains still unclear. It was termed a laminar buffet mode by Dandois et al. (2018) and an analogy was made with the ‘breathing’ mode seen in shock-induced separation bubbles, although the Strouhal numbers based on the separation length (St_L) were noted to be different. In the present section, we want to examine this bubble mode from a few different viewpoints.

5.1 Scaling

Firstly we consider the frequency scaling of the mode. Table 2 summarises relevant quantities for four different configurations of the OALT25 (simulation data from Dandois et al. (2018)) is added to present results at $Re = 3,000,000$ and one V2C test case from Zauner

Table 2 Intermediate mode frequency scaling

Airfoil	Re	M	St	L_{sep}/c	U_R/U_∞	St_L	St_R
OALT25	500,000	0.68	0.60	0.274	-0.141	0.164	0.023
OALT25	500,000	0.70	0.42	0.361	-0.147	0.152	0.022
OALT25	500,000	0.71	0.43	0.39	-0.155	0.168	0.026
OALT25	500,000	0.735	0.39	0.300*	-0.190*	0.117	0.022
OALT25	3,000,000	0.735	0.92	0.175	-0.122	0.161	0.020
OALT25**	3,000,000	0.735	1.12	0.195	-0.090	0.218	0.020
V2C***	500,000	0.70	0.6	0.29	-0.13	0.174	0.023

*Estimated during low-lift phase, where bubble mode clearly exists

**Values taken from Dandois et al. (2018)

***Values taken from Moise et al. (2022a)

and Sandham (2019a). The various dimensionless frequencies are $St = fc/U_\infty$ as obtained from the simulations, $St_L = fL_{sep}/U_\infty$ based on the interaction length L_{sep} , defined as the distance from separation to reattachment, and $St_R = fL_{sep}|U_R|/U_\infty^2 = St_L|U_R|/U_\infty$, where U_R is the maximum velocity in the reverse-flow region (approximated by the minimum x -velocity component). We see that St_L is not constant over the different cases and is an order of magnitude higher than the values of this parameter seen in shock-induced separation bubbles. In that case the bubble response is known to be a form of growth and shrinkage known as bubble breathing. Although the precise mechanism is still debated, one line of argument (e.g. Toubert and Sandham 2009) is that it arises from the response of the separating boundary layer and the associated separation shock to stochastic forcing. Here the separation shock is rather weak in comparison with the shock impinging cases and the Mach number is not far into the supersonic regime. As another difference to cases with shock generators, the shock wave and impingement point for the current case are not fixed and the separation bubble is observed to periodically move back and forth, as it will be shown later in more detail. Correcting St_L by the factor $|U_R|/U_\infty$ leads to a Strouhal number, where present cases collapse much better, showing $St_R \approx 0.022$, even though the onset of low-frequency buffet makes the comparison more difficult for $M > 0.7$ at $Re = 500,000$. The proposed scaling suggests a role for the reverse-flow vortex in the mechanism for the intermediate mode, but some caution is required, considering the limited number of data points.

5.2 Shock and Expansion Wave Structure

To examine the intermediate-frequency separation bubble mode in detail we consider the $M = 0.7$ case with $Re = 500,000$, where this mode containing multiple shock waves is well established. Before discussing the dynamics of the wave structures, we introduce some terminology. Figure 11 extracts the main features that will be useful in the discussion. As mentioned previously, a prominent feature is a λ -shock structure that extends over the front part of the airfoil. The front leg of the λ -shock is the compression wave due to boundary-layer separation from the airfoil surface, which can be termed a separation wave. The upper part of the λ -shock terminates the supersonic region well above the airfoil, resulting in the first lobe structure seen in the average Mach number contours in Fig. 9a. Even though the flow closer to the surface remains supersonic, the rear leg of the λ -shock connects down to the top of the separation bubble on the airfoil surface. This shock reflects from the sonic line at the apex of the separated flow region as an expansion fan (coloured blue in Fig. 11),

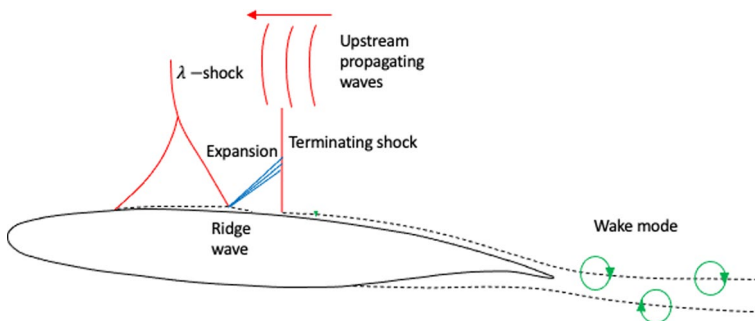


Fig. 11 Sketch of principal flow features at $M = 0.7$, $Re = 500,000$

following a structure that is well known from impinging shock wave studies. The turning of the flow due to the expansion wave supports reattachment of the boundary layer (Lindsey et al. 1947). The impact of the shock on the separation is to stop the separation region from growing, so its maximum height is at the impingement location, forming a ‘ridge’ feature. We will use the terminology ‘ridge wave’ as a shorthand for the V-shaped shock-expansion wave pattern formed as the flow turns over the top of the separation bubble.

It is noted that a sufficiently strong rear leg (compression wave) of the λ -shock can turn the flow subsonic (as seen for example in Zauner et al. (2019) for a different airfoil geometry). However, for the present test case at $M = 0.7$, the flow near the surface remains supersonic until reaching the normal shock. Similar flow structures have also been observed in experiments by Spee (1969). For some cases, a train of several weak reflected waves can be observed in Schlieren visualisations, before a final shock wave terminates the supersonic region.

Passing the ridge wave, the local freestream is still supersonic and this continues up to the terminating shock wave sketched in Fig. 11. The terminating shock determines the rear lobe of the supersonic region in Fig. 9a. Boundary-layer transition occurs in the vicinity of the reattachment position, which is close to the shock-foot location and, at this Mach number, the boundary layer remains attached up to the trailing edge. The wake mode is sketched as a von-Karman vortex street, developing behind the airfoil.

One other prominent feature, that leads us into a discussion of the dynamics, is the presence of upstream propagating waves in the subsonic region downstream of the λ -shock and above and behind the terminating shock. Many acoustic waves are present in the flow, some originating at the trailing edge, which are widely known as ‘Kutta waves’ (Tijdeman 1975), and some from the transition region. Such upstream-propagating wave structures have been observed in simulations (e.g. Garnier and Deck 2010) as well as experiments (e.g. Jacquin et al. 2009). Above the terminating shock, these waves take on a more coherent form and strengthen into upstream-propagating shock waves, with a supersonic flow (relative to their propagation speed) ahead of them. It is interesting to note that very similar flow features have been observed in experiments of Börner and Niehuis (2021) over transonic turbine blades in a cascade configuration. In that application, the top bound of the supersonic flow region is restricted by the wake of a neighbouring blade and the upstream-propagation and potential influence of acoustic waves appears significantly restricted. Nevertheless they also observe two distinct phenomena at low and intermediate frequencies, which appear to be related with buffet and separation-bubble instabilities.

Having established a terminology and identified the principal physical features, we can now look at the flow development during a cycle of the intermediate mode. Figure 12 shows five representative snapshots of the streamwise pressure gradient $\partial p/\partial x$ during one cycle of the mode evolution, together with an x/t diagram in part (f) showing the location of the snapshots with horizontal black lines. The x/t diagram contains contours of $\partial p/\partial x$ in a plane located $0.05c$ above the airfoil surface. The method of plotting shows compression regions (e.g. shock waves) in red and expansion (e.g. expansion fan) in blue. A corresponding movie can be found in supplementary material and online (https://youtu.be/_9TwbA_gkAU4). It can be seen in Fig. 12f that the intermediate mode follows a regular oscillation and frame (e) at $t = 80.8$ has a very similar structure as frame (a) at $t = 78.5$. The period of $\tau \approx 2.3$ corresponds to the value of $St = 0.42$ given in Table 2. Although Fig. 12f only covers a small portion of a low-frequency cycle, relatively regular intermediate-frequency oscillations are observed throughout the simulation, as shown in Fig. 7b. The first point to note as we move from frame (a) to (b) is the bifurcation of the terminating shock, the upper part of which moves upstream, merging with one of the upstream propagating waves above

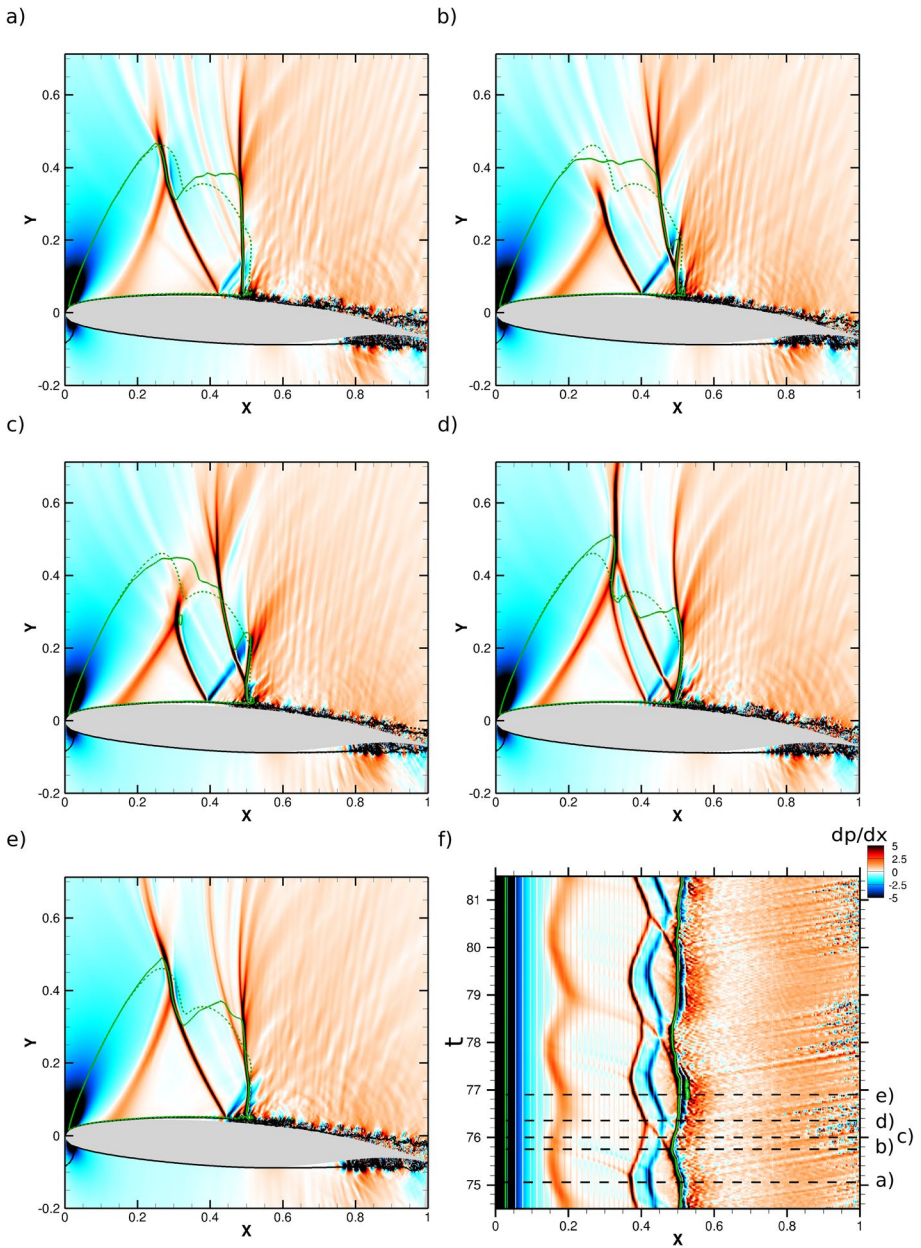


Fig. 12 Representative 2D snapshots showing contours of $\partial p/\partial x$ for $M = 0.7$ at **a** $t = 78.5$, **b** $t = 79.1$, **c** $t = 79.3$, **d** $t = 80.1$, and **e** $t = 80.8$. Red (blue) contours denote adverse (favourable) pressure gradient within the range of $[-5, 5]$. Green solid and black iso-curves denote sonic lines ($M_{loc} = 1.0$) and $M_{loc} = 0.5$, respectively. Solid and dashed curves respectively denote instantaneous and time-averaged iso-curves. **f** Corresponding x/t diagram of data extracted along a curve with a constant wall distance $\Delta n = 0.05$, where labels indicate time instants of snapshots (**a–e**)

the terminating shock. The bifurcation can be seen in (b) at a distance $0.08c$ from the surface. The rear part of the bifurcated shock remains almost stationary, while the front part moves upstream and the bifurcation point moves towards the surface. Eventually, between (d) and (e) the front bifurcated wave merges with the λ -shock. The top part of the λ -shock weakens out as it moves into a region with reducing Mach number and eventually ends up as acoustic radiation into the region upstream of the airfoil. Similar bifurcations of shock waves have been reported by Spee (1969).

A final point to note from Fig. 12f is that all the wave features participate in the intermediate mode oscillation. At $x = 0.2$ we have oscillations on the separation compression wave. In the region $0.4 < x < 0.45$ we see the ridge wave structure (shock and expansion waves) moving forward and backwards and at $x = 0.5$ we see oscillations in the terminating shock wave. With reference to the ridge wave, the x location of the separation wave lags by roughly 90° , indicating that the bubble is neither in a pure ‘breathing’ mode, which would require the waves to be out of phase, nor in a simple up- and down-stream motion which would require the waves to be in phase. The movement of the ridge wave is close to being out of phase with the terminating shock location, given by the green sonic line in Fig. 12f, such that the ridge wave is furthest upstream when the terminating wave is furthest downstream.

5.3 Separation Bubble Dynamics

After having identified the behaviour of distinct flow structures, we now want to further analyse their connections during a cycle of the intermediate frequency oscillation. To assist with this, we will use two more x/t diagrams, shown on Fig. 13, based on (a) pressure fluctuations at a distance $0.05c$ above the airfoil surface and (b) skin friction contours on the surface. Some propagating features are identified on the figures and will be discussed in the following paragraphs. Note that, in interpreting Fig. 13a, we need to be careful making connections to shock and expansion waves, as the centre of a shock wave, for example, is located by a rapid change in colour from blue to red, not by the centre of the red region.

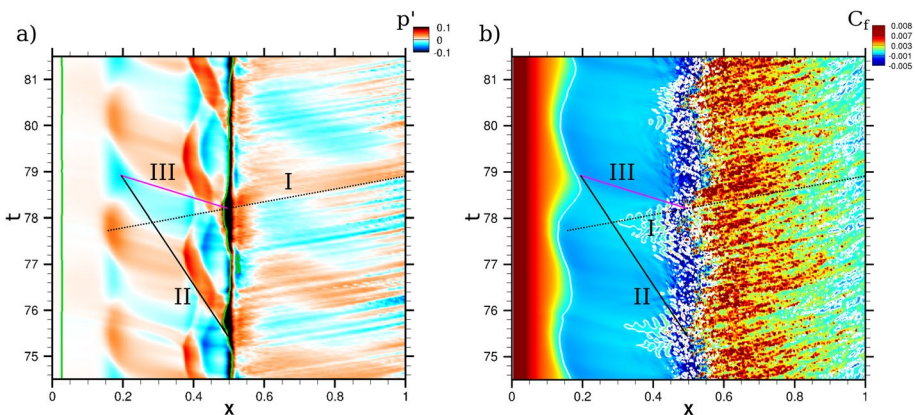


Fig. 13 Space/time (x/t) diagrams showing **a** pressure fluctuations ($p' = p - \bar{p}$) within the range of $[-0.1, 0.1]$ at a monitor curve with a wall distance of $\Delta n = 0.05$ and **b** contours of skin-friction coefficient within the range of $[-0.005, 0.005]$. Sketched lines emphasise upstream (dashed) and downstream (solid) propagating structures

From Fig. 13a we can readily identify the main features. Linear instabilities develop in the separation bubble, where velocity profiles contain an inflexion point and form Kelvin-Helmholtz roll-ups with strong spanwise coherence. Such structures have been predicted for similar flows using linear stability analysis (Zauner et al. 2017; Zauner and Sandham 2019a) and typical phase speeds agree well with present convection speeds of $U_c \approx 0.2$, corresponding to the slope of the dotted line labelled *I* in Fig. 13. Even after break-down to turbulence, these vortex structures maintain spanwise coherence, leaving traces over the aft-section of the airfoil at $St > 10$. Further details are provided by Zauner and Sandham (2020), where Q-criteria visualisations of these phenomena for a different airfoil are shown in their Fig. 11. The pressure oscillation caused by movement of the separation compression wave is seen at $x = 0.2$. We also note the bifurcation of the terminating shock, with the leading wave moving upstream along the lines labelled *II*, eventually merging with the ridge wave at $x = 0.4$. Near the separation wave, we again observe features in the contours that appear to align with the extension of line *II*. A third feature that appears is the line labelled *III*, which can be associated with traces of acoustic waves circumventing the supersonic region at a speed corresponding to the slope of the magenta line of approximately $U_a \approx U_\infty - U_\infty/M = 0.43$ (U_∞ denotes the freestream velocity). The magenta line matches the contour gradient between $0.25 < x < 0.4$ particularly well. Within the same x range, traces of acoustic structures can be also seen at different time instances (e.g. blue stripe at $t = 75.5$), even though they appear relatively weak in the contour plots. These waves pass through the supersonic regions at significantly higher frequencies compared to those corresponding to the bubble mode. However, the acoustic field may well be moderated by unsteadiness at lower frequencies, leading to changes in contour patterns of Fig. 13 corresponding to acoustic speeds. The velocity associated with line *II* ($U_{II} \approx 0.087$) is about 20 times slower than typical acoustic waves, but of the same order as the maximum reverse-flow velocity ($U_R = -0.147$). The mechanism leading to the slope of features aligned with *II* is not clear, but one could speculate about some near-wall structures being responsible.

More insights are possible from the skin friction plot in Fig. 13b, where sketched lines are identical with (a). Here the separation point is shown by the white line at $x \approx 0.15$. The reattachment is obscured by the unsteadiness, but can be traced as the colour change from deep blue to red at $x \approx 0.525$. During the upstream motion of the separation wave (e.g. $76.6 < t < 77.8$) the C_f is dropping, which favours the development of the linear instabilities mentioned before. As a consequence, the reattachment region starts spreading upstream. This observation aligns with local linear stability results of Zauner and Sandham (2019a), where laminar boundary layers become unstable further upstream during low-lift phases (i.e. when the separation wave is close to its most upstream position). The region just upstream of reattachment, where transition is starting, forms a roughly triangular-shaped region, bounded by line *I* and a slope corresponding to velocities similar to maximum reverse-flow velocities of $U_{r,max} \approx -0.147$ which may indicate an upstream convection of disturbances helping to sustain the process of transition to turbulence.

The above discussion has concerned only the $M = 0.7$ $Re = 500,000$ case. From analysis of SPOD mode shapes, some changes in this mode can be observed as Re increases, the most obvious being that the separation bubble reduces in size and the upper portion and trailing shock of the λ -shock merge with the termination shock, as can be seen in the SPOD modes on Fig. 6. This suggests that the shock bifurcation is not a crucial part of the mechanism, which instead involves a connection between fluctuations inside the separated boundary layer and upstream-propagating waves travelling up the main shock and around the top of the supersonic flow region. According to the Strouhal number arguments above, the period is set by the separation length and the strength of the reverse flow vortex. It would

be interesting to investigate whether such modes can be detected in shock-induced separation bubbles under simplified flow conditions considering free- as well as forced transition upstream of the separation point. Furthermore, it would be also interesting to explore the possibility of such bubble modes existing at incompressible conditions. Eventually, global stability and/or resolvent analysis are needed to gain better understanding of this intermediate-frequency separation-bubble mode.

6 Conclusion

An extensive parameter study has been performed for ONERA's OALT25 profile at a constant angle of attack of $\alpha = 4^\circ$, covering $500,000 < Re < 3,000,000$ at $M = 0.735$ and $0.67 < M < 0.80$ at $Re = 500,000$. Present results at $Re = 3,000,000$ and $M = 0.735$ agree well with simulations and experiments of Dandois et al. (2018) and Brion et al. (2019), respectively. With longer sampling time in the current work, a secondary low-frequency peak could be observed, in addition to the intermediate-frequency mode that was labeled as 'laminar buffet' in Dandois et al. (2018).

The low-frequency mode matches, in terms of frequency and mode shape, the conventional global instability associated with transonic buffet (Crouch et al. 2007) and agrees well with numerical (Garnier and Deck 2010, Sartor et al. 2018, Fukushima and Kawai 2017, Sansica et al. 2022) as well as experimental (Jacquin et al. 2009, Hartmann et al. 2013, Placek and Ruchała 2018, Davidson and Babinsky 2016, Sugioka et al. 2018) studies in literature. This mode has previously been observed for cases subjected to tripped or fully turbulent boundary layers and often referred to as 'turbulent buffet', even though we confirm here its occurrence for free-transitional and laminar upstream boundary layers as well. Furthermore, we have shown that it can occur in a free-transitional case even when there is only a single shock wave present. The frequency of this low-frequency mode shows minor Re sensitivity, but its amplitude increases with decreasing Re . When reducing M , on the other hand, the spectral peak shifts to reduced St with decaying amplitude.

The intermediate-frequency mode appears to be focused on the laminar separation bubble, but does not show the same frequency or 180° phase shift between separation and reattachment, which is characteristic of the commonly observed low-frequency 'breathing' mode of shock-induced separation bubbles. Furthermore, we observe the formation and convection of linear instabilities within the separation bubble and upstream-propagating structures, which are significantly slower than acoustic waves in the freestream. Their role with respect to the bubble mode remains unclear. Frequencies and amplitudes of established bubble modes show minor M sensitivity, but weaken and shift to slightly higher frequencies for $M < 0.7$. When reducing Re , the spectral peak shifts to reduced St with decaying amplitude.

A new scaling $St_R = fL_{sep}U_R/U_\infty^2 \approx 0.02$ for the bubble mode is proposed, which emphasises the role of interaction length L_{sep} and strength of the reverse-flow vortex U_R . Good agreement of this scaling for different Re suggests a relation between the slowly upstream-propagating structures and the strength of the reverse-flow vortex, but requires further examination by global stability or resolvent analysis.

In addition to low- and intermediate-frequency modes, for cases at moderate Reynolds numbers we observe distinct wake modes at higher frequencies, which are similar to those described by Moise et al. (2022a) for the V2C airfoil. At increased Reynolds numbers,

however, this wake mode seems to interact with the first harmonic of the bubble mode, which causes strong vortex shedding from the separation bubble.

In the present context, acoustic feedback models proposed by Lee (1990), Hartmann et al. (2013), Feldhusen-Hoffmann et al. (2021) appear very unlikely to explain the nature of low-frequency phenomena as well as intermediate-frequency phenomena.

Comparing SPOD modes of OALT25 and V2C profiles, we can identify similar modal features for both airfoil geometries. While their shapes and sensitivity to M agree well, onset conditions as well as frequencies and amplitudes seem to be strongly influenced by geometric aspects, leading to significant differences in mean-flow characteristics.

Finally, we observe low- and intermediate-frequency instabilities associated with buffet and bubble modes, respectively, developing separately. While both phenomena require flow separation, onset characteristics can vary significantly. Recent studies by Moise et al. connect transonic buffet with incompressible low-frequency instabilities (Moise et al. 2023) and establish similarities between cases with free and forced boundary-layer transition (Moise et al. 2022b). Hence, the existence of self-sustained low-frequency modes associated with buffet are not necessarily limited to the existence of shock waves or the state of the separation bubble (i.e. laminar or turbulent). The roles of shock waves and the state of the separation bubbles will be addressed in future work also for intermediate-frequency phenomena.

Appendix A: Near-Wall Velocity Profiles at Moderate and High Reynolds Numbers

Figure 14 shows velocity profiles for (a) $Re = 500,000$ and (b) $Re = 3,000,000$ as a function of wall units $y^+ = y u_\tau / \nu$, where u_τ denotes the shear wall velocity. Locations on the suction side at (a) $x = 0.74$ and (b) $x = 0.8$ correspond to maximum Δy^+ values of the wall cells. It is shown that even for high Reynolds numbers, the velocity profile is still relatively linear for the first three grid points in the wall normal direction. Results associated with transonic buffet and separation bubble instabilities agree even for the high Re case well with simulations by Dandois et al. (2018) and experiments by Brion et al. (2019), as demonstrated in Sect. 3. To demonstrate grid-convergence also for cases without experimental reference data, a simulation was run for 50 time units on a wall-refined grid with

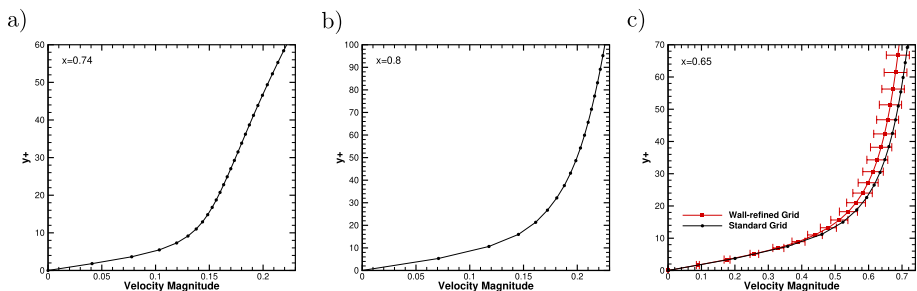


Fig. 14 Velocity profiles near the wall for $M = 0.735$ and **a** $Re = 500,000$ and **b** $Re = 3,000,000$ at locations $x = 0.74$ and 0.8 , respectively. **c** Velocity profiles for $M = 0.7$ and $Re = 500,000$ at $x = 0.65$ are shown for simulations using the standard grid (black) and a wall-refined grid (red). Symbols indicate locations of grid points and red error bars indicate velocity differences of 5%

a reduced time step ($2 \cdot 10^{-5}$ instead of $3.2 \cdot 10^{-5}$). The refined grid described in Sect. 2.2 has been modified to maintain a wall-normal grid spacing of $\Delta y^+ \approx 1$ at the wall. Comparing simulation results using standard (black curve) and wall-refined (red curve) grids, Fig. 14c shows excellent agreement of suction-side velocity profiles within the linear near-wall region ($y^+ < 10$) at $x = 0.65$ (maximum C_f). Even further away, differences between velocity profiles remain within 5% (red error bars), which is reasonable considering the limited simulation run-time where statistics cover 30 time units (approximately one low-frequency cycle), neglecting the initial transient. Furthermore, velocity profiles have been extracted along grid lines originating at $x = 0.65$. With increasing wall distance, grid lines of the two different grids diverge.

Good agreement between simulations using standard and wall-refined grids is confirmed in Fig. 15, showing (a) wall-pressure coefficient and (b) skin-friction coefficient. The suction-side separation bubble is captured particularly well. Without showing further evidence for brevity, we want to note that frequencies associated with the bubble instability show excellent agreement with $St = 0.42$ and $St = 0.39$ for standard and wall-refined grids, respectively.

Appendix B: Wall-Pressure and Skin-Friction Coefficient at Moderate Reynolds Numbers

Wall-pressure coefficient (black curves) together with corresponding root-mean-square (*rms*) fluctuations (red curves) are shown in Fig. 16 as functions of x . Solid and dashed curves denote suction and pressure sides, respectively. Figure 16a shows the wall-pressure distribution at $M = 0.69$, before buffet develops. We observe a local minimum on the suction side at $x \approx 0.05$ followed by an increase caused by a laminar separation bubble (as shown later in corresponding C_f plots). The main shock is located around $x = 0.4 - 0.5$ and terminates the supersonic region as well as the (mainly) laminar boundary layer. While the shock wave and its corresponding pressure jump is strongly dependent on local Mach numbers of the supersonic flow upstream, downstream pressure recovery also depends on the airfoil geometry. In order to recover freestream conditions downstream of the airfoil, the flow along a streamline needs to accelerate again. This (weak) post-expansion leads to a small bump in the C_p curve downstream of the shock wave centered around $x \approx 0.7$. Wall-pressure fluctuations on the upper side denoted by the red solid curve show three distinct peaks where the flow separates ($x \approx 0.15$), at the shock foot ($x \approx 0.4$), and just downstream of the trailing edge. Fluctuations are strongest near the shock foot, where the boundary layer reattaches. Between these peaks, pressure fluctuations decay to relatively low amplitudes.

While changes in C_p for $M \leq 0.70$ are moderate, Mach-number effects become more pronounced with the onset of developed buffet. For $M = 0.735$ (Fig. 16d), the C_p curve over the suction side looks qualitatively very different compared to the cases before. Due to large-scale shock motion, we cannot identify the shock position as clearly as before, but the center of the (broad) *rms* peak at $x \approx 0.6$ suggests no significant changes of the mean shock position compared to the $M = 0.70$ case. We observe a global increase of pressure fluctuations around the airfoil for high M , particularly at the trailing edge and in the wake. It is interesting to see a small local maximum in the fluctuation intensities slightly upstream of the trailing edge at $x \approx 0.95$.

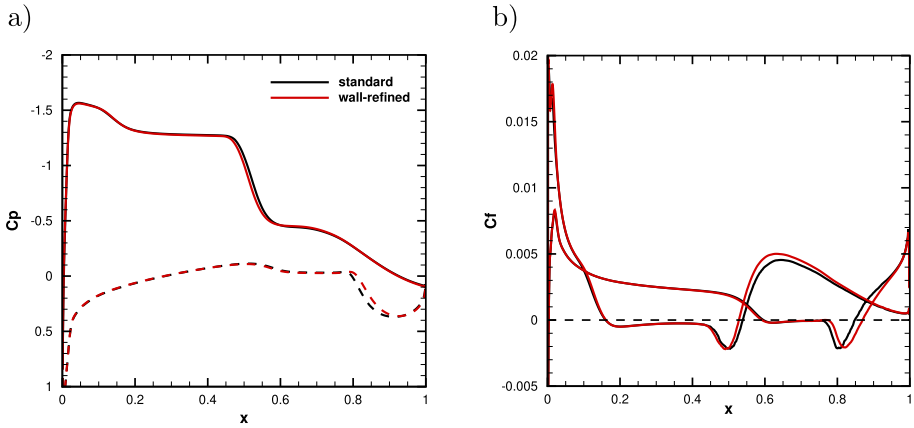


Fig. 15 Distributions of **a** wall-pressure coefficient and **b** skin-friction coefficient for $M = 0.7$ and $Re = 500,000$ are shown for simulations using the standard grid (black) and a wall-refined grid (red)

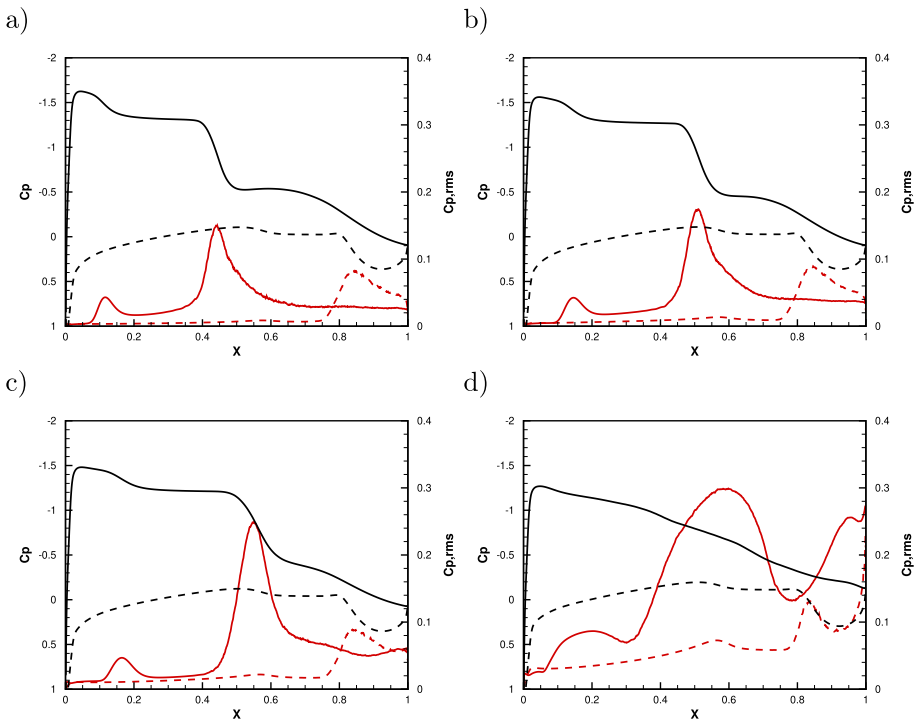


Fig. 16 Black curves show mean wall-pressure coefficient $C_{p,w}$ as a function of chord position for free-stream Mach numbers of **a** $M = 0.69$, **b** $M = 0.70$, **c** $M = 0.71$, and **d** $M = 0.735$. Red curves show corresponding root-mean-square values of the pressure coefficient denoted as $C_{p,rms}$. While solid curves correspond to the upper side of the airfoil, dashed lines correspond the lower side

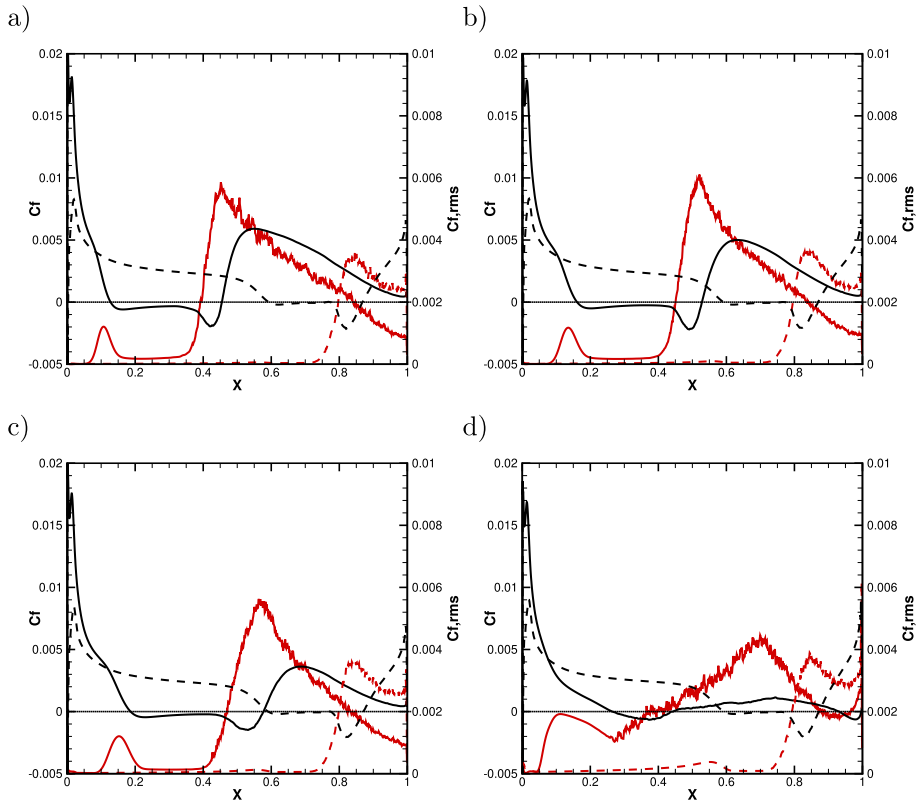


Fig. 17 Black curves show mean skin-friction coefficient C_f as a function of chord for free-stream Mach numbers of **a** $M = 0.69$ (left top), **b** $M = 0.70$, **c** $M = 0.71$, and **d** $M = 0.735$. Red curves show corresponding root-mean-square values of the skin-pressure coefficient $C_{f,rms}$. While solid curves correspond to the upper side of the airfoil, dashed lines correspond the lower side

In a similar manner as before for C_p , Fig. 17 shows the time-averaged skin-friction coefficient (black curves) as well as root-mean-squared C_f fluctuations (red curves). Solid and dashed lines correspond respectively to suction and pressure sides. For $M \leq 0.71$, the separation bubble ($C_f < 0$) grows while shifting downstream. A local maximum in C_f after reattachment ($C_f > 0$) decreases with increasing M . For $M = 0.735$, we don't observe such typical characteristics of a laminar separation bubble due to significant unsteady effects (intermittent flow separation). However, it should be emphasised that averaged values need to be treated with care after transonic buffet sets in.

Time-averaged C_f on the pressure side look very similar for cases before and after buffet onset, showing a separation bubble well upstream of the trailing edge. For almost all simulated cases at $M < 0.735$, the fluctuation levels on the pressure side are similar and for $x < 0.8$ (where the flow is mainly laminar) almost negligible.

On the suction side, we can observe local peaks in C_f fluctuation-intensities at similar positions as for C_p , corresponding to separation and reattachment region (near the shock foot). The shock-wave/boundary-layer interaction promotes rapid breakdown to turbulence, which leads to irregular fluctuations in the red $C_{f,rms}$ curves between their global peak and trailing edge. It is remarkable that the trend for the global maximum of fluctuation

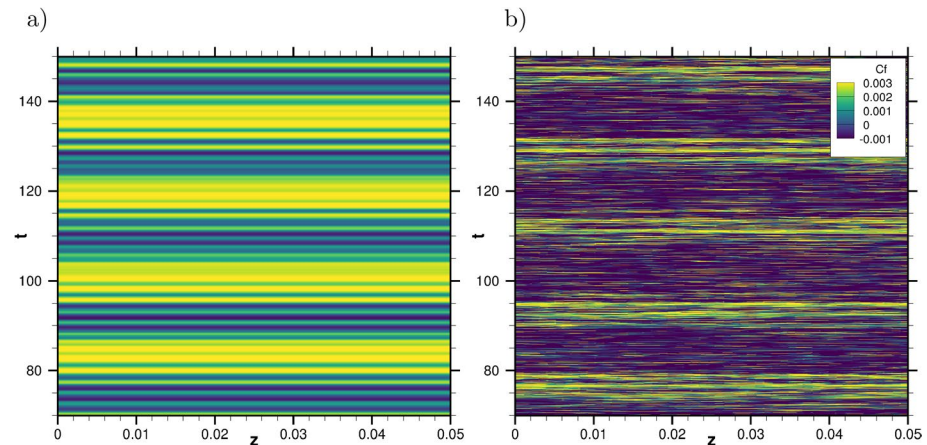


Fig. 18 Contours of kin-friction coefficient C_f as a function of spanwise location and time at chord positions **a** $x = 0.15$ and **b** $x = 0.55$

intensities is now reversed though, as the peak decreases between $M = 0.70$ and $M = 0.735$ at the reattachment point (coinciding with the shock foot) with increasing Mach number and buffet intensity. The local maximum of fluctuation intensity at the separation point, however, first decreases with increasing M before it increases again for $M > 0.7$. A third local maximum arises at the TE for $M = 0.735$, while the remaining peaks become wider due to the large-scale unsteadiness mentioned before.

Appendix C: Spanwise Organisation of Low- and Intermediate Frequency Oscillations

Figure 18 shows C_f as a function of spanwise location and time at (a) $x = 0.15$ and (b) $x = 0.6$ near separation and reattachment regions, respectively. While the laminar region shows hardly any variations in the spanwise direction, we can observe in (b) three-dimensional turbulent structures after flow reattachment. However, large-scale fluctuations associated with buffet and bubble modes show strong spanwise coherence for the present spanwise domain extent.

Supplementary Information The online version contains supplementary material available at <https://doi.org/10.1007/s10494-023-00415-4>.

Acknowledgements The authors would like to thank ONERA for providing the OALT25 airfoil geometry. The authors also appreciate insightful discussions with V. Brion and J. Dandois, as well as F. Alves Protela. PM was supported by an EPSRC grant entitled “Extending the buffet envelope: step change in data quantity and quality of analysis” (Grant ID: EP/R037027/1). The simulations were performed on the Iridis5 cluster at the University of Southampton and on the UK national supercomputer facility ARCHER2, using computer time provided via the UK Turbulence Consortium grant EP/R029326/1.

Author Contributions MZ contributed to the development of the in-house code SBLI and ran simulations. PM ran simulations and applied the Spectral Proper Orthogonal Decomposition technique. NDS obtained

project funding including computer time. All authors participated in technical discussion and in writing the manuscript.

Funding PM was supported by an EPSRC grant entitled “Extending the buffet envelope: step change in data quantity and quality of analysis” (Grant ID: EP/R037027/1). Computation time on the UK national super-computer facility ARCHER2 was provided via the UK Turbulence Consortium grant EP/R029326/1.

Data Availability Pertinent data will be made openly available on the University of Southampton repository (<https://doi.org/10.5258/SOTON/D2600>). Additional visualisation material is provided online on Youtube at https://youtube.com/playlist?list=PLoPRsYcneMTLvQuLz5d7vdmp-wxWHyu_0.

Declarations

Conflict of interest The authors have no competing interests as defined by Springer, or other interests that might be perceived to influence the results and/or discussion reported in this paper.

Ethical approval Not applicable.

Informed consent Not applicable.

Open Access This article is licensed under a Creative Commons Attribution 4.0 International License, which permits use, sharing, adaptation, distribution and reproduction in any medium or format, as long as you give appropriate credit to the original author(s) and the source, provide a link to the Creative Commons licence, and indicate if changes were made. The images or other third party material in this article are included in the article’s Creative Commons licence, unless indicated otherwise in a credit line to the material. If material is not included in the article’s Creative Commons licence and your intended use is not permitted by statutory regulation or exceeds the permitted use, you will need to obtain permission directly from the copyright holder. To view a copy of this licence, visit <http://creativecommons.org/licenses/by/4.0/>.

References

- Adamson, T.C.J., Liou, M.S.: Unsteady motion of shock waves in two dimensional transonic channel flows. Tech. rep. (1977). <https://ui.adsabs.harvard.edu/abs/1977muaa.rept....A>
- Babinsky, H., & Harvey, J. (Eds.): Shock Wave-Boundary-Layer Interactions (Cambridge Aerospace Series). Cambridge University Press (2011). <https://doi.org/10.1017/CBO9780511842757>
- Börner, M., Niehuis, R.: Dynamics of shock waves interacting with laminar separated transonic turbine flow investigated by high-speed schlieren and surface hot-film sensors. *J. Turbomach.* **143**(5), 051010 (2021). <https://doi.org/10.1115/1.4050330>
- Brion, V., Dandois, J., Abart, J.-C., Paillart, P.: Experimental Analysis of the Shock Dynamics on a Transonic Laminar Airfoil (2017). <https://doi.org/10.1051/eucass/2016090365>
- Brion, V., Dandois, J., Mayer, R., Reijasse, P., Lutz, T., Jacquin, L.: Laminar buffet and flow control. *Proc. Inst. Mech. Eng. Part G J. Aerosp. Eng.* (2019). <https://doi.org/10.1177/0954410018824516>
- Carpenter, M.H., Nordström, J., Gottlieb, D.: A stable and conservative interface treatment of arbitrary spatial accuracy. *J. Comput. Phys.* **148**(2), 341–365 (1999). <https://doi.org/10.1006/jcph.1998.6114>
- Crouch, J.D., Garbaruk, A., Magidov, D.: Predicting the onset of flow unsteadiness based on global instability. *J. Comput. Phys.* **224**(2), 924–940 (2007). <https://doi.org/10.1016/j.jcp.2006.10.035>
- Crouch, J.D., Garbaruk, A., Magidov, D., Travin, A.: Origin of transonic buffet on aerofoils. *J. Fluid Mech.* **628**, 357–369 (2009). <https://doi.org/10.1017/S0022112009006673>
- D’Aguanno, A., Schrijer, F., van Oudheusden, B.: Experimental investigation of the transonic buffet cycle on a supercritical airfoil. *Exp. Fluid.* **62**(10), 1–23 (2021)
- Dandois, J., Mary, I., Brion, V.: Large-eddy simulation of laminar transonic buffet. *J. Fluid Mech.* **850**, 156–178 (2018). <https://doi.org/10.1017/jfm.2018.470>
- Davidson, T.S., Babinsky, H.: 54th AIAA Aerospace Sciences Meeting. American Institute of Aeronautics and Astronautics, Reston, Virginia, (2016). <https://doi.org/10.2514/6.2016-0044>
- De Tullio, N., Sandham, N.D.: Direct Numerical Simulations and Modal Analysis of Subsonic Flow Over Swept Airfoil Sections (2019). [arXiv:1901.04727](https://arxiv.org/abs/1901.04727)
- Duncan, W.J.: Tail Buffeting. *J. R. Aeronaut. Soc.* **38**(278), 108–137 (1934). <https://doi.org/10.1017/S0368393100110156>

- Dussauge, J.P., Dupont, P., Debiève, J.F.: Unsteadiness in shock wave boundary layer interactions with separation. *Aerosp. Sci. Technol.* **10**(2), 85–91 (2006). <https://doi.org/10.1016/j.ast.2005.09.006>
- Erickson, A.L., Stephenson, J.D.: A Suggested method of analyzing for transonic flutter of control surfaces based on available experimental evidence. In: Technical Report, National Advisory Committee for Aeronautics (1947). <https://ntrs.nasa.gov/search.jsp?R=19930085716>
- Feldhusen-Hoffmann, A., Lagemann, C., Loosen, S., Meysonnat, P., Klaas, M., Schröder, W.: Analysis of transonic buffet using dynamic mode decomposition. *Exp. Fluid.* **62**(4), 66 (2021). <https://doi.org/10.1007/s00348-020-03111-5>
- Fukushima, Y., Kawai, S.: 55th AIAA Aerospace Sciences Meeting. American Institute of Aeronautics and Astronautics, Reston, Virginia, (2017), pp. 1–10. <https://doi.org/10.2514/6.2017-0495>. <http://arc.aiaa.org/doi/10.2514/6.2017-0495>
- Garnier, E., Deck, S.: In: Notes on Numerical Fluid Mechanics and Multidisciplinary Design, **110**, 135–141 (2010). <https://doi.org/10.1007/978-3-642-14139-3-16>
- Giannelis, N.F., Vio, G.A., Levinski, O.: A review of recent developments in the understanding of transonic shock buffet. *Progr. Aerosp. Sci.* **92**(May), 39–84 (2017). <https://doi.org/10.1016/j.paerosci.2017.05.004>
- Glauser, M.N., Leib, S.J., George, W.K.: In: Durst, F., Launder, B.E., Lumley, J.L., Schmidt, F.W., Whitelaw, J.H.: *Turbulent Shear Flows 5*. Springer Berlin Heidelberg, Berlin, Heidelberg, (1987), pp. 134–145
- Grossi, F.: Physics and modeling of unsteady shock wave/boundary layer interactions over transonic airfoils by numerical simulation. In: Ph.D. thesis, Institut National Polytechnique de Toulouse (2014)
- Grossi, F., Braza, M., Hoarau, Y.: Prediction of transonic buffet by delayed detached-eddy simulation. *AIAA J.* **52**(10), 2300–2312 (2014). <https://doi.org/10.2514/1.J052873>
- Hartmann, A., Feldhusen, A., Schröder, W.: On the interaction of shock waves and sound waves in transonic buffet flow. *Phys. Fluid.* **25**, 2 (2013). <https://doi.org/10.1063/1.4791603>
- Iovnovich, M., Raveh, D.E.: Reynolds-averaged navier-stokes study of the shock-buffet instability mechanism. *AIAA J.* **50**(4), 880–890 (2012). <https://doi.org/10.2514/1.J051329>
- Jacobs, C.T., Zauner, M., De Tullio, N., Jammy, S.P., Lusher, D.J., Sandham, N.D.: An error indicator for finite difference methods using spectral techniques with application to aerofoil simulation. *Comput. Fluids* **168**, 67–72 (2018). <https://doi.org/10.1016/j.compfluid.2018.03.065>
- Jacquin, L., Molton, P., Deck, S., Maury, B., Soulevant, D.: Experimental study of shock oscillation over a transonic supercritical profile. *AIAA J.* **47**(9), 1985–1994 (2009). <https://doi.org/10.2514/1.30190>
- John, H.: Critical review of methods to predict the buffet capability of an aircraft (September), 34 (1974)
- Jones, J.G.: A survey of the dynamic analysis of buffeting and related phenomena. In: Technical report, Royal Aircraft Establishment (1973)
- Jones, L., Sandberg, R., Sandham, N.: Direct numerical simulations of forced and unforced separation bubbles on an airfoil at incidence. *J. Fluid Mech.* **602**, 175–207 (2008). <https://doi.org/10.1017/S0022112008000864>
- Lee, B.H.K.: Oscillatory shock motion caused by transonic shock boundary-layer interaction. *AIAA J.* **28**(5), 942–944 (1990). <https://doi.org/10.2514/3.25144>
- Lee, B.: Self-sustained shock oscillations on airfoils at transonic speeds. *Progr. Aerosp. Sci.* **37**(2), 147–196 (2001). [https://doi.org/10.1016/S0376-0421\(01\)00003-3](https://doi.org/10.1016/S0376-0421(01)00003-3)
- Lindsey, W.F., Daley, B.N., Humphreys, M.D.: The flow and force characteristics of supersonic airfoils at high subsonic speeds. Technical Report March (1947), Langley Memorial Aeronautical Laboratory (1947). <https://apps.dtic.mil/dtic/tr/fulltext/u2/b805964.pdf>
- Lumley, J.L.: *Stochastic tools in turbulence*, 1st edn. Academic Press (1970)
- Mabey, D.G.: Beyond the buffet boundary. *Aeronaut. J.* (1973). <https://doi.org/10.1017/S0001924000040811>
- Masini, L., Timme, S., Peace, A.J.: Analysis of a civil aircraft wing transonic shock buffet experiment. *Journal of Fluid Mechanics* **884**(December 2019), A1 (2020). <https://doi.org/10.1017/jfm.2019.906>. https://www.cambridge.org/core/product/identifier/S0022112019009066/type/journal_article
- McDevitt, J.B., Levy, L.L., Jr., Deiwert, G.S.: Transonic flow about a thick circular-arc airfoil. *AIAA J.* **14**(5), 606–613 (1976). <https://doi.org/10.2514/3.61402>
- Memmo, A., Bernardini, M., Pirozzoli, S.: Scrutiny of buffet mechanisms in transonic flow. *Int. J. Num. Methods Heat Fluid Flow* (2016). <https://doi.org/10.1108/HFF-08-2016-0300>
- Moise, P., Zauner, M., Sandham, N.D.: Large-eddy simulations and modal reconstruction of laminar transonic buffet. *J. Fluid Mech.* **944**, A16 (2022). <https://doi.org/10.1017/jfm.2022.471>
- Moise, P., Zauner, M., Sandham, N.D.: Connecting transonic buffet with incompressible low-frequency oscillations on aerofoils. *J. Fluid Mech.* (2023). <https://doi.org/10.48550/ARXIV.2301.08508>
- Moise, P., Zauner, M., Sandham, N.D., Timme, S., He, W.: Transonic Buffet Characteristics Under Conditions of Free and Forced Transition (2022). <https://doi.org/10.48550/ARXIV.2208.10452>. [arXiv:2208.10452](https://arxiv.org/abs/2208.10452)

- Paladini, E., Marquet, O., Sipp, D., Robinet, J.C., Dandois, J.: Various approaches to determine active regions in an unstable global mode: application to transonic buffet. *J. Fluid Mech.* **881**(M), 617–647 (2019). <https://doi.org/10.1017/jfm.2019.761>
- Paladini, E., Beneddine, S., Dandois, J., Sipp, D., Robinet, J.C.: Transonic buffet instability: from two-dimensional airfoils to three-dimensional swept wings. *Phys. Rev. Fluids* **4**(10), 103 (2019). <https://doi.org/10.1103/PhysRevFluids.4.103906>
- Pearcey, H., Osborne, J., Haines, A.B.: The interaction between local effects at the shock and rear separation - a source of significant scale effects in wind-tunnel tests on aerofoils and wings. In *AGARD Conference Proceedings*, 35 (1968).
- Piponnier, S., Dussauge, J.P., Debiève, J.F., Dupont, P.: A simple model for low-frequency unsteadiness in shock-induced separation. *J. Fluid Mech.* **629**, 87–108 (2009). <https://doi.org/10.1017/S0022112009006417>
- Placek, R., Miller, M.: Wind Tunnel Tests of laminar-turbulent transition influence on basic aerodynamic characteristics of laminar airfoil in transonic flow regime. Technical Reports, Institute of Aviation in Warsaw (2016)
- Placek, R., Ruchała, P.: The flow separation development analysis in subsonic and transonic flow regime of the laminar airfoil. *Transpor. Res. Proc.* (2018). <https://doi.org/10.1016/j.trpro.2018.02.029>
- Plante, F., Dandois, J.: AIAA SciTech 2019 Forum (2019). <https://doi.org/10.2514/6.2019-0300>
- Plante, F., Laurendeau, E.: Matrix-free Global Stability Analysis Framework for 2D and 3D Applications (2022). <https://doi.org/10.2514/6.2022-3227>. <https://arc.aiaa.org/doi/abs/10.2514/6.2022-3227>
- Roos, F.W.: Some features of the unsteady pressure field in transonic airfoil buffeting. *J. Aircr.* **17**(11), 781–788 (1980). <https://doi.org/10.2514/3.57965>
- Sandberg, R.D., Sandham, N.D.: Nonreflecting zonal characteristic boundary condition for direct numerical simulation of aerodynamic sound. *AIAA J.* **44**(2), 402–405 (2006). <https://doi.org/10.2514/1.19169>
- Sansica, A.: Stability and unsteadiness of transitional shock-wave/boundary-layer interactions in supersonic flows. In: PhD Thesis, University of Southampton pp. 179–184 (2015). <https://eprints.soton.ac.uk/385891/>
- Sandhu, H., Sandham, N.: Boundary conditions for spatially growing compressible shear layers. In: Technical Report, Faculty of Engineering, Queen Mary and Westfield College, University of London (1994)
- Sansica, A., Hashimoto, A., Koike, S., Kouchi, T.: Side-Wall Effects on the Global Stability of Swept and Unswept Supercritical Wings at Buffet Conditions (2022). <https://doi.org/10.2514/6.2022-1972>. <https://arc.aiaa.org/doi/abs/10.2514/6.2022-1972>
- Sansica, A., Loiseau, J.C., Kanamori, M., Hashimoto, A., Robinet, J.C.: System identification of two-dimensional transonic buffet. *AIAA J.* **60**(5), 3090–3106 (2022). <https://doi.org/10.2514/1.J061001>
- Sartor, F., Mettot, C., Sipp, D.: Stability, receptivity, and sensitivity analyses of buffeting transonic flow over a profile. *AIAA J.* **53**(7), 1980–1993 (2015). <https://doi.org/10.2514/1.J053588>
- Schauerte, C.J., Schreyer, A.M.: Influence of Reynolds Number on Transonic Buffet Conditions on a Supercritical Airfoil (2023). <https://doi.org/10.2514/6.2023-0431>
- Schmidt, O.T., Towne, A.: An efficient streaming algorithm for spectral proper orthogonal decomposition. *Comput. Phys. Comm.* **237**, 98–109 (2019). <https://doi.org/10.1016/j.cpc.2018.11.009>
- Spee, B.: Investigations on the Transonic Flow Around Aerofoils (1969). <http://resolver.tudelft.nl/uuid:028b7ceb-37eb-4a72-af62-67951a4e82eb>
- Stanewsky, E., Basler, D.: Experimental Investigation of Buffet Onset and Penetration on a Supercritical Airfoil at Transonic Speeds pp. 4:1–11 (1990). <https://elib.dlr.de/36666/>
- Sugioka, Y., Numata, D., Asai, K., Koike, S., Nakakita, K., Nakajima, T.: Polymer/ceramic pressure-sensitive paint with reduced roughness for unsteady measurement in transonic flow. *AIAA J.* **56**(6), 2145–2156 (2018). <https://doi.org/10.2514/1.J056304>
- Sznajder, J., Kwiatkowski, T.: Analysis of effects of shape and location of micro-turbulators on unsteady shockwave-boundary layer interactions in transonic flow. *J. KONES Powertrain Transp.* **23**(2), 373–380 (2016). <https://doi.org/10.5604/12314005.1213755>
- Szibert, D., Asproulias, I., Grossi, F., Duvigneau, R., Hoarau, Y., Braza, M.: Numerical study of the turbulent transonic interaction and transition location effect involving optimisation around a supercritical airfoil. *Eur. J. Mech. B/Fluids* (2016). <https://doi.org/10.5604/12314005.1213755>
- Szibert, D., Asproulias, I., Grossi, F., Duvigneau, R., Hoarau, Y., Braza, M.: Numerical study of the turbulent transonic interaction and transition location effect involving optimisation around a supercritical aerofoil. *Eur. J. Mech. B/Fluids* **55**, 380–393 (2016). <https://doi.org/10.1016/j.euromechflu.2015.09.007>
- Tijdeman, H.: On the motion of shock waves on an airfoil with oscillating flap. In: *Symposium Transonicum II. International Union of Theoretical and Applied Mechanics* (1975)
- Tijdeman, H.: Investigation of the Transonic Flow Around Oscillating Airfoils. National Aerospace Lab. Amsterdam, Netherlands TR-77-090U (1977). <https://doi.org/b07421b9-136d-494c-a161-b188e5ba1d0d>

- Timme, S., Thormann, R.: Towards three-dimensional global stability analysis of transonic shock buffet. In: AIAA Atmospheric Flight Mechanics Conference (June), 1–13 (2016). <https://doi.org/10.2514/6.2016-3848>. <http://arc.aiaa.org/doi/10.2514/6.2016-3848>
- Touber, E., Sandham, N.D.: Large-eddy simulation of low-frequency unsteadiness in a turbulent shock-induced separation bubble. *Theor. Comput. Fluid Dyn.* **23**, 79–107 (2009). <https://doi.org/10.1007/s00162-009-0103-z>
- Towne, A., Schmidt, O.T., Colonius, T.: Spectral proper orthogonal decomposition and its relationship to dynamic mode decomposition and resolvent analysis. *J. Fluid Mech.* **847**, 821–867 (2018). <https://doi.org/10.1017/jfm.2018.283>
- Visbal, M.R., Gaitonde, D.V.: On the use of higher-order finite-difference schemes on curvilinear and deforming meshes. *J. Comput. Phys.* **181**(1), 155–185 (2002). <https://doi.org/10.1006/jcph.2002.7117>
- Welch, P.: The use of fast Fourier transform for the estimation of power spectra: a method based on time averaging over short, modified periodograms. *IEEE Trans. Audio Electr.* **15**(2), 70–73 (1967). <https://doi.org/10.1109/TAU.1967.1161901>
- Yao, Y., Shang, Z., Castagna, J., Sandham, N., Johnstone, R., Sandberg, R., Suponitsky, V., Redford, J., Jones, L., De Tullio, N.: 47th AIAA Aerospace Sciences Meeting including The New Horizons Forum and Aerospace Exposition. American Institute of Aeronautics and Astronautics, Orlando, (2009). <https://doi.org/10.2514/6.2009-566>. <http://arc.aiaa.org/doi/10.2514/6.2009-566>
- Zauner, M.: Direct numerical simulation and stability analysis of transonic flow around airfoils at moderate Reynolds numbers. In: Ph.D. Thesis, University of Southampton (2019). SOURCE-WORK-ID: 0426d097-0fbf-4250-ae5f-9f3d97fe3ee0
- Zauner, M., Jacobs, C.T., Sandham, N.D.: Grid refinement using spectral error indicators with application to airfoil DNS. In ECCM-ECFD Conference proceedings Glasgow, (2018). <https://www.scopus.com/inward/record.uri?eid=2-s2.0-85076507969&partnerID=40&md5=9c64d3c06408bbd089137c4845ed5484>
- Zauner, M., Sandham, N.D.: Multiblock structured grids for direct numerical simulations of transonic wing sections. In ICCFD Conference proceedings Barcelona, (2018). <https://www.scopus.com/inward/record.uri?eid=2-s2.0-85051300054&partnerID=40&md5=981f44adaaf32906ab12e247ce9d72a6>
- Zauner, M., Sandham, N.D.: PolyGridWizZ Beta-version 0.0.1 (2018). <https://doi.org/10.5281/ZENODO.1245598>
- Zauner, M., Sandham, N.D.: LES study of the three-dimensional behaviour of unswept wing sections at buffet conditions. In Direct and Large-Eddy Simulation XII (2019). https://doi.org/10.1007/978-3-030-42822-8_43
- Zauner, M., Sandham, N.D.: Modal analysis of a laminar-flow airfoil under buffet conditions at $Re = 500,000$. *Flow Turbul. Combust.* (2019). <https://doi.org/10.1007/s10494-019-00087-z>
- Zauner, M., Sandham, N.D.: Wide domain simulations of flow over an unswept laminar wing section undergoing transonic buffet. *Phys. Rev. Fluids* **5**, 083903 (2020). <https://doi.org/10.1103/PhysRevFluids.5.083903>
- Zauner, M., De Tullio, N., Sandham, N.D.: Direct numerical simulations of transonic flow around an airfoil at moderate Reynolds numbers. *AIAA J.* **57**(2), 597–607 (2019). <https://doi.org/10.2514/1.J057335>
- Zauner, M., Sandham, N.D., Wheeler, A.P.S., Sandberg, R.D.: Linear stability prediction of vortex structures on high pressure turbine blades. *Int. J. Propul. Power* (2017). <https://doi.org/10.3390/ijtp2020008>