



# A survey on binary metaheuristic algorithms and their engineering applications

Jeng-Shyang Pan<sup>1,2</sup> · Pei Hu<sup>2,3</sup> · Václav Snášel<sup>4</sup> · Shu-Chuan Chu<sup>1</sup> 

Published online: 21 November 2022

© The Author(s), under exclusive licence to Springer Nature B.V. 2022

## Abstract

This article presents a comprehensively state-of-the-art investigation of the engineering applications utilized by binary metaheuristic algorithms. Surveyed work is categorized based on application scenarios and solution encoding, and describes these algorithms in detail to help researchers choose appropriate methods to solve related applications. It is seen that transfer function is the main binary coding of metaheuristic algorithms, which usually adopts Sigmoid function. Among the contributions presented, there were different implementations and applications of metaheuristic algorithms, or the study of engineering applications by different objective functions such as the single- and multi-objective problems of feature selection, scheduling, layout and engineering structure optimization. The article identifies current troubles and challenges by the conducted review, and discusses that novel binary algorithm, transfer function, benchmark function, time-consuming problem and application integration are need to be resolved in future.

**Keywords** Metaheuristic algorithms · Engineering applications · Binary optimization

---

Pei Hu, Václav Snášel and Shu-Chuan Chu have contributed equally to this work.

---

✉ Shu-Chuan Chu  
scchu0803@gmail.com

Jeng-Shyang Pan  
jengshyangpan@gmail.com

Pei Hu  
huxiaopei163@163.com

Václav Snášel  
vaclav.snasel@vsb.cz

<sup>1</sup> College of Computer Science and Engineering, Shandong University of Science and Technology, Qingdao 266590, Shandong, China

<sup>2</sup> Department of Information Management, Chaoyang University of Technology, Taichung 413310, Taiwan

<sup>3</sup> School of Computer Science and Software Engineering, Nanyang Institute of Technology, Nanyang 473004, Henan, China

<sup>4</sup> Faculty of Electrical Engineering and Computer Science, VŠB—Technical University of Ostrava, Ostrava 70032, Moravskoslezský kraj, Czech Republic

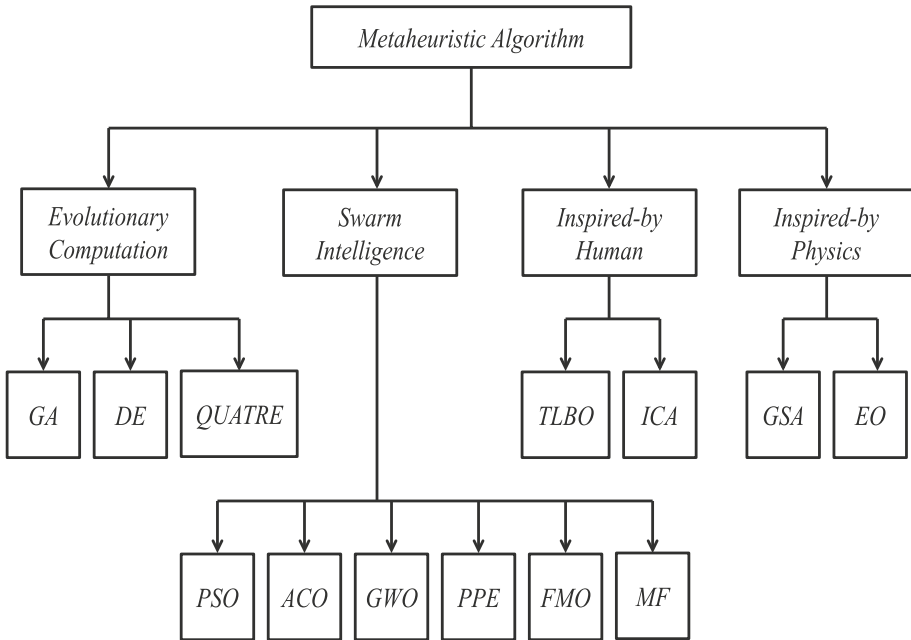
## 1 Introduction

Nowadays, optimization problems have become complications, and many engineering applications can be designed as large-scale optimizations to be solved, such as large-scale power system, scheduling with a large number of resources, and the vehicle routing planning of massive transportation network (Maisto and Esposito 2012; Wan et al. 2019). However, traditional approaches, simplex method and gradient descent method, no longer meet actual needs.

Nature has always been a rich source of human creativity, and adaptive optimization phenomena continue to arouse human beings (Nadimi-Shahraki et al. 2021b, 2022b). Intelligent algorithms, inspired by the laws of nature and biology, are designed to solve practical problems (Bandyopadhyay et al. 2021; Osuna-Enciso et al. 2022). They assign complex tasks to individuals in a group to complete cooperation, and have the characteristics of simple concept and convenient implementation (Chaturvedi et al. 2020; Torres-Cerna et al. 2016). Due to the distribution, simplicity, flexibility and robustness of intelligent algorithms, they have been widely used in the areas of computer science, knowledge discovery, communication networks and scheduling planning, and have become a research hotspot (Maisto and Esposito 2012; Kampouridis and Otero 2017; Nadimi-Shahraki et al. 2021d).

Genetic algorithm (GA), differential evolution (DE) and QUasi-affine transformation evolution (QUATRE) derive from biological evolution, heredity, crossover and mutation operations (Long et al. 2020; Zheng et al. 2019; Nadimi-Shahraki et al. 2020; Hu et al. 2022). Particle swarm optimization (PSO) and ant colony optimization (ACO) simulate the joint search behaviors of birds and ants (Zhao et al. 2021; Menéndez et al. 2016), and grey wolf optimizer (GWO), fish migration optimization (FMO), cat swarm optimization (CSO), phasmatodea population evolution (PPE) and moth flame (MF) imitate the living habits of wolves, grayings, cats, stick insects and moths (Hatta et al. 2019; Chai et al. 2020; Pan et al. 2021d; Song et al. 2021; Nadimi-Shahraki et al. 2021e). Imperialist competitive algorithm (ICA) and teaching-learning-based optimization (TLBO) follow the characteristics of human behaviors (Armaghani et al. 2021; Mishra et al. 2019). Gravitational search algorithm (GSA) and equilibrium optimizer (EO) come from the laws and phenomena of physics (Gauthama Raman et al. 2020; Shao et al. 2021). Fig. 1 presents the classification of metaheuristic algorithm.

Although these algorithms are well suited for continuous search space, there are also discrete and binary issues (Nadimi-Shahraki et al. 2021c). GA, ACO and discrete moth-flame optimization (DFMO) are proposed to solve discrete space. Binary optimization aims to handle problems with the variables limited to “0” and “1” (Pan et al. 2021c), so various binary metaheuristic algorithms, binary DE, binary PSO, binary GWO and binary FMO, are proposed to deal with these applications such as open-off, maximum-minimum, selected-nselected, yes-no, active-inactive, etc. Binary PSO uses the concepts of the velocity and momentum of continuous PSO, resulting in its limited performance. Nguyen et al. adopted stickiness property and rollover probability to replace them, and introduced a novel binary PSO (Nguyen et al. 2021). Inspired by plant genetics, Gupta et al. proposed a novel multi-species binary coded algorithm, Mendelian evolution theory optimization algorithm (Gupta et al. 2020b). First, the DNAs of two different species are denaturation producing hybrid offspring. Second, the algorithm describes how dominant and recessive traits emerge in two consecutive generations. Third, organisms resist natural mutation through Epimutation.



**Fig. 1** Metaheuristic algorithm

Constraint satisfaction problem (CSP) is a hot research topic in artificial intelligence, and many issues are described as CSPs such as timetabling, bus scheduling, resource allocation and planning, etc. Gortazar et al. applied decentralized search method to general binary problems (Gortazar et al. 2010). They distinguish the constraint directly handled by a solver from the constraint resolved by penalty function, and conduct experiments on four well-known binary optimizations to study the effectiveness and efficiency of the method. Fu et al. proposed a new self-adaptive DE (SADE) algorithm (Fu et al. 2011). SADE adaptively adjusts the mutation rate  $F$  and the crossover rate  $CR$  according to different population distribution, and improves population diversity and convergence ability. Michalak visualized combinatorial search space with low-dimensional Euclidean embedding where obtained visualization method analyzes the behavior of the population and the work of genetic operators in binary space (Michalak 2018), and studied the problems of four-peak, firefighter, knapsack, traveling salesman and quadratic assignment.

The above methods employ continuous optimization algorithms to deal with binary applications, while Glover et al. introduced a new binarization method for zero-one optimization (Glover et al. 2019). The algorithm assigns values to variables accompanying the processes of augmentation and shifting, and the diverse solutions obtained by permutation mapping improve the flexibility and generality of the algorithm which is extended to scheduling and routing applications.

Metaheuristic algorithms have been successfully applied to many real-world problems, and have also shown competitiveness in the application research of binary engineering. We summarize various applications of binary metaheuristics. Although correlational research has only recently begun, people have put forward many methods to work out complex applications. A major contribution of this survey is that it systematically expounds the coding application of binary metaheuristic algorithms for the first time, providing basic

common guidelines for addressing the design of these algorithms. In particular, by discussing each application, the most popular solutions are described in detail, and the pros and cons of methods are analyzed.

Although there are survey papers on metaheuristic algorithms, they mainly focus on the research of continuous space and applications. We aim to provide a comprehensive survey of the latest works to further study some improvements and applications of binary metaheuristic algorithms, and we also hope that this survey attracts the attention of researchers to further investigate challenges and opportunities facing them.

The remainder of this paper is organized as follows: Sect. 2 introduces the binary coded schemes of metaheuristic algorithms. Section 3 surveys theory research and benchmark functions. In Sect. 4, engineering applications have been widely discussed, including packing, feature selection, scheduling, structure optimization, layout and parameter optimization, etc. Sect. 5, future research prospects are pointed out, and finally, Sect. 6 concludes the works.

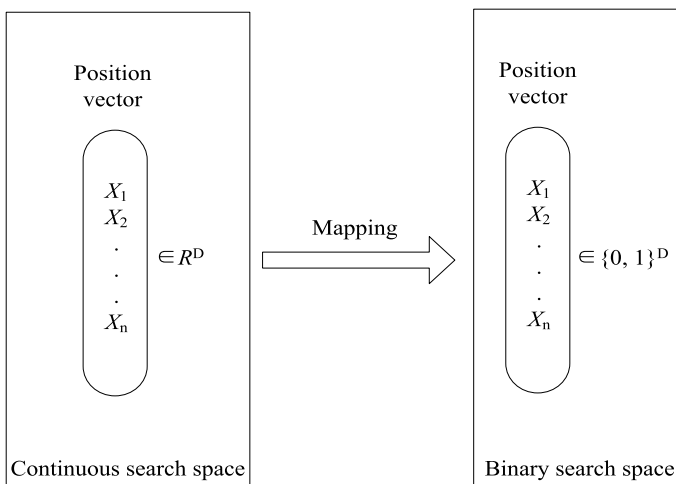
## 2 Binary coded scheme

For a binary minimization, its mathematical model is defined as:

$$\min f(x) = f(x_1, \dots, x_D), x_i \in \{0, 1\} \& i \in \{1, 2, \dots, D\} \quad (1)$$

where  $D$  is dimension.

The chromosomes of traditional GA are composed of “0” and “1”, and it can directly solve binary optimizations (Contaldi et al. 2019). The continuous values applied by other algorithms need to be discretized, and we divide binary algorithms into transfer function method, quantum-inspired method, XOR method and threshold method according to different discretization ways. Figure 2 presents the process of mapping continuous search space to binary search space.



**Fig. 2** The process of mapping a continuous search space to a discrete search space

## 2.1 Transfer function method

Transfer function is commonly used in binary algorithms. It is responsible for mapping obtained value to  $[0, 1]$ , and then determines that the next position of a particle is “0” or “1” by comparing with a random number in  $[0, 1]$  interval. Transfer functions are believed to be the cheapest and simplest operation in constructing binary metaheuristic algorithms, and their main advantage is to maintain the structure of continuous algorithms. (Saremi et al. 2015) studied the behaviors of transfer functions from improving the performance of metaheuristic algorithms, and proved that transfer function plays an important role in the exploration and exploitation of binary metaheuristic algorithms.

The first binary PSO (BPSO) uses Sigmoid function as its transfer function. Mirjalili and Lewis paid attention to transfer functions, and proposed S-type and V-type transfer functions for the first time (Mirjalili and Lewis 2013). Mina and Hossein claimed a binary ICA using S-type and V-type transfer functions (Mirhosseini and Nezamabadi-pour 2018), and the performance of the algorithm is evaluated through 0–1 knapsack, feature selection, and content-based image retrieval (CBIR) system. To solve the trouble that BPSO is easy to fall into local optimum, Guo et al. proposed new Z-shaped transfer functions (Guo et al. 2020a). Mirjalili et al. (2020) and Ahmed et al. (2021) utilized U-shaped transfer function to implement binarization, and Mirjalili et al. (2020) found that the algorithm acquires the best experimental results when  $\alpha = 1$  and  $\beta = 1.5$ .

Leonard et al. studied angle modulated PSO (AMPPO) (Leonard et al. 2015). Trigonometric function is defined as following:

$$T(x) = \sin[2\pi(x - a)b * \cos(2\pi(x - a)c)] + d \quad (2)$$

where  $a$ ,  $b$ ,  $c$  and  $d$  are four coefficients, and their values are set to 0, 0.5, 0.8 and 0 in Leonard et al. (2015). It only needs to know the value of the first dimension, and the values of other dimensions are obtained from their previous dimensions with Eq. (2), as shown in Fig. 3. The purpose of this research is to identify and provide the evidence where the algorithm may fail. It turns out that the assumption of the excellent solutions grouped together does not apply to AMPPO algorithm, and the reason is explained by the generating function which hinders the exploitation ability of the algorithm.

Mafarja et al. proposed time-varying S-shaped and V-shaped transfer functions with step vector to balance exploration and exploitation (Mafarja et al. 2018). In the early stage of the algorithm, the probability of changing position is high, which helps to explore new solutions from initial population, while the probability becomes low at end stage.

$$T(x, \tau) = \frac{1}{1 + e^{-\frac{x}{\tau}}} \quad (3)$$

$$\tau = \left(1 - \frac{t}{MAX\_IT}\right) \tau_{max} + \frac{t}{MAX\_IT} \tau_{min} \quad (4)$$

where  $t$  and  $MAX\_IT$  represent current and max iterations.  $\tau_{min}$  and  $\tau_{max}$  mean the min and max values of  $\tau$ , and they are set to 0.01 and 4.

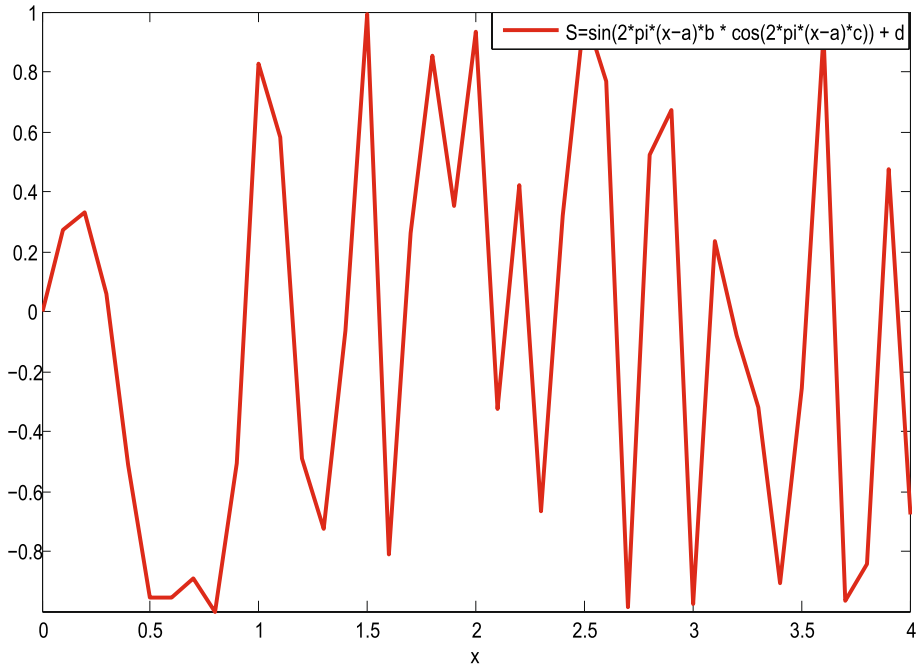


Fig. 3 The example of trigonometric function

The performance of binary metaheuristic algorithms depends on their solution ability and transfer function, Beheshti proposed an adaptive transfer function with two linear functions to avoid the defects of existing transfer functions (Beheshti 2021).

$$T(x) = \max\{\min\{-G_1x/(x_{max} - G_2) + G_3, 1\}, 0\} \tag{5}$$

$$G_m = G_{mf} + (G_{ms} - G_{mf})(T - t)/(T - 1), m = 1, 2, 3 \tag{6}$$

where  $G_{ms}$  and  $G_{mf}$  represent the initial and final values of  $G_m$ . Experiments prove that the algorithm acquires optimal performance when  $G_{1s} = 0.5$ ,  $G_{2s} = 0$ ,  $G_{3s} = 0.5$ , and  $G_{1f} = 1$ ,  $G_{2f} = 0.9 * x_{max}$ ,  $G_{3f} = 0$ .

Baykasoğlu and Ozsoydan (2018) introduced the first binary dynamic optimization problem (DOP) of weighted superposition attraction (WSA) algorithm, and proposed two new binary conversion schemes.

$$x = \text{floor}(\text{abs}(x\%2)) \tag{7}$$

$$x = \text{round}(\text{abs}(x\%2))\%2 \tag{8}$$

For easy reference, we have summarized commonly used transfer functions, as shown in Tables 1 and 2.

**Table 1** The details of transfer functions

Type	Formula	Ref.
S-shaped	$T(x) = 1/(1 + \exp(-1 * x))$	Mirjalili and Lewis (2013), Mirhosseini and Nezamabadi-pour (2018)
S-shaped	$T(x) = 1/(1 + \exp(-2 * x))$	Mirjalili and Lewis (2013), Mirhosseini and Nezamabadi-pour (2018)
S-shaped	$T(x) = 1/(1 + \exp(-x/2))$	Mirjalili and Lewis (2013), Mirhosseini and Nezamabadi-pour (2018)
S-shaped	$T(x) = 1/(1 + \exp(-x/3))$	Mirjalili and Lewis (2013), Mirhosseini and Nezamabadi-pour (2018)
S-shaped	$T(x) = 1/(1 + \exp(-10(x - 0.5)))$	Emary et al. (2016)
S-shaped	$T(x) = 1/(1 + \exp(-20(x - 0.5)))$	Pan et al. (2021a)
V-shaped	$T(x) = \left  \frac{\sqrt{2}}{\pi} \int_{-0}^{(\sqrt{\pi}/2)x} e^{-t^2} dt \right $	Mirjalili and Lewis (2013), Mirhosseini and Nezamabadi-pour (2018)
V-shaped	$T(x) =  \tan h(x) $	Mirjalili and Lewis (2013), Mirhosseini and Nezamabadi-pour (2018)
V-shaped	$T(x) = x/\sqrt{1 + x^2}$	Mirjalili and Lewis (2013), Mirhosseini and Nezamabadi-pour (2018)
V-shaped	$T(x) = 1/(\frac{2}{\pi} \arctan(\frac{2}{\pi} x))$	Mirjalili and Lewis (2013), Mirhosseini and Nezamabadi-pour (2018)
V-shaped	$T(x) = \left  \frac{x}{\sqrt{1+x^2}} \right $	Mirjalili (2016)
V-shaped	$T(x) = 2  \frac{1}{1+e^{-x}} - 0.5  $	Abd Rahman and Zobaa (2017)
U-shaped	$T(x) = \alpha x^b $	Mirjalili et al. (2020), Ahmed et al. (2021)
Z-shaped	$T(x) = \sqrt{1 - 2^x}$	Guo et al. (2020a)
Z-shaped	$T(x) = \sqrt{1 - 5^x}$	Guo et al. (2020a)
Z-shaped	$T(x) = \sqrt{1 - 8^x}$	Guo et al. (2020a)
Z-shaped	$T(x) = \sqrt{1 - 20^x}$	Guo et al. (2020a)
Trigonometric	$T(x) = \sin[2\pi(x - a)b * \cos(2\pi(x - a)c)] + d$	Leonard et al. (2015)

**Table 2** The details of transfer functions -2

Type	Formula	Ref.
Time-varying	$T(x, \tau) = \frac{1}{1 + e^{-\frac{2x}{\tau}}}$	Mafarja et al. (2018)
Time-varying	$T(x, \tau) = \frac{1}{1 + e^{-\frac{x}{\tau}}}$	Mafarja et al. (2018)
Time-varying	$T(x, \tau) = \frac{1}{1 + e^{-\frac{x}{2\tau}}}$	Mafarja et al. (2018)
Time-varying	$T(x, \tau) = \frac{1}{1 + e^{-\frac{x}{3\tau}}}$	Mafarja et al. (2018)
Time-varying	$T(x, \tau) = \begin{cases} 1 - \frac{2}{2 + e^{-\frac{2x}{\tau}}} & \text{if}(x \leq 0) \\ \frac{2}{1 + e^{-\frac{2x}{\tau}}} - 1 & \text{else} \end{cases}$	Mafarja et al. (2018)
Time-varying	$T(x, \tau) = \begin{cases} 1 - \frac{2}{2 + e^{-\frac{x}{\tau}}} & \text{if}(x \leq 0) \\ \frac{2}{1 + e^{-\frac{x}{\tau}}} - 1 & \text{else} \end{cases}$	Mafarja et al. (2018)
Time-varying	$T(x, \tau) = \begin{cases} 1 - \frac{2}{2 + e^{-\frac{x}{2\tau}}} & \text{if}(x \leq 0) \\ \frac{2}{1 + e^{-\frac{x}{2\tau}}} - 1 & \text{else} \end{cases}$	Mafarja et al. (2018)
Time-varying	$T(x, \tau) = \begin{cases} 1 - \frac{2}{2 + e^{-\frac{x}{3\tau}}} & \text{if}(x \leq 0) \\ \frac{2}{1 + e^{-\frac{x}{3\tau}}} - 1 & \text{else} \end{cases}$	Mafarja et al. (2018)
Upgrade	$T(x) = \max\{\min\{-G_1x/(x_{max} - G_2) + G_3, 1\}, 0\}$	Beheshti (2021)

## 2.2 Quantum-inspired method

The smallest unit for storing information in quantum computing is called Q-bit which may be in “0/1” state, or in any superposition state of the two (Rizk-Allah 2021). The state of Q-bit is acquired by:

$$|\psi\rangle = \alpha|0\rangle + \beta|1\rangle \tag{9}$$

where  $\alpha$  and  $\beta$  are probabilities in “0” state and “1” state, and  $\alpha^2 + \beta^2 = 1$ . An individual is represented as a string of Q-bits:

$$X_i = \begin{bmatrix} \alpha_1, \dots, \alpha_n \\ \beta_1, \dots, \beta_n \end{bmatrix} \tag{10}$$

where  $n$  is the length of  $X_i$ . Quantum gate (Q-gate) can change the state of Q-bit.

Based on the concepts and principles of quantum computing, Han and Kim developed quantum evolution algorithm (QEA) with Q-bit and state superposition (Han and Kim 2002). Like other EAs, QEA also has the characteristics of individual representation,



**Table 3** Truth table for XOR operator

A	B	$A \oplus B$
0	0	0
0	1	1
1	0	1
1	1	0

**Table 4** Position update with XOR operator

$X_i^d$	$X_k^d$	$(X_i^d \oplus X_k^d)$	1	2	XOR with 1	XOR with 2
			$\varphi < 0.5$	$\varphi \leq 0.5$	$\varphi(X_i^d \oplus X_k^d)$	$\varphi(X_i^d \oplus X_k^d)$
0	0	0	1	0	1	0
0	1	1	0	1	0	1
1	0	1	0	1	1	0
1	1	0	1	0	0	1

objective function and population evolution. QEA is not binary or digital representation, but uses Q-bit as probability.

Agrawal et al. utilized Q-bits and quantum rotation to present individuals and mutation operator, and introduced quantum-based crossover to improve global search ability (Agrawal et al. 2020). Srikanth et al. integrated quantum computing with binary GWO to improve solution ability (Srikanth et al. 2018). Q-bit and Q-gate assist the proposed algorithm balancing exploitation and exploration, and they participate in the position update of wolves. Quantum-inspired EAs (QIEAs) follow the superposition of multiple states on Q-bits and rotation gate, and Wright and Jordanov proposed half significant bit (HSB) and evolved rotation gate to solve the problem of binary premature convergence (Wright and Jordanov 2017). In Guo et al. (2020b), rotation angle is determined through the *pbest* and *gbest* of PSO and multi-bit quantum rotation gate updates the positions of particles with the variance of fitness values. Mohammad et al. employed quantum-inspired GA (QIGA) including improved quantum measurement and adaptive quantum rotation gate based on the quality and length of abstracts to improve performance (Mojriani and Mirroshandel 2021).

### 2.3 XOR method

XOR is a bitwise operator, and XOR and its variant are adopted to implement position update. To obtain excellent performance in Industry 4.0 application, Mojtaba et al. introduced an improved binary GSA which benefits from XOR operator and repository to improve global search ability (Ahmadiéh Khanesar et al. 2020). Truth table for XOR operator is defined as in Table 3.

Kiran et al. developed an artificial bee colony (ABC) algorithm for binary optimization, and position update adopts XOR (Kiran and Gündüz 2013), as shown in Eq. (11) and Table 4. The proposed method is studied on the problem of facility location without capacity limitation.

$$X_i^d = X_i^d \oplus [\varphi(X_i^d \oplus X_k^d)] \quad (11)$$

where  $X_i^d$  is the  $d$ th dimension of  $X_i$  and  $i \neq k$ .

Aslan et al. first discretized Jaya by logical XOR operator (Aslan et al. 2019), while the proposed idea is simple but effective.

$$X_i^d = X_i^d \oplus (Best^d \oplus Worst^d) \quad (12)$$

where *Best* and *Worst* represent the best and worst particles.

To solve the time-consuming problem of threshold image segmentation, Gao et al. claimed a PSO algorithm based on learning strategy (Gao et al. 2016). First, new jump operators and learning items improve the search ability of PSO and maintain convergence rate. Second, a random crossover operator and an exchange strategy are further studied so that particles have more opportunities to explore search space in each dimension.

$$X_i^d = X_i^d \oplus \phi(X_i^d \oplus X_k^d) \quad (13)$$

where  $\phi$  means logic NOT operator with 50% probability.

## 2.4 Threshold method

The threshold methods used in binary EAs are simple. They limit search space to [0, 1], and then calculate particles' positions by continuous algorithms. Final positions are determined through comparing with a predefined threshold  $T$ . The values of  $T$  are usually set to 0.5, 0.6, or 0.7 (Faris et al. 2018a; Mlakar et al. 2017; Baraldi et al. 2018), and a position is updated with 1 when it is greater than  $T$ .

## 3 Binary metaheuristic algorithms in theory and test problems

This section summarizes the latest progress in related theoretical research and the benchmark functions of binary metaheuristic algorithms.

### 3.1 Theoretical research

EAs have randomness and uncertainty, but their theoretical research is not perfect. There is a little research which mainly focuses on convergence, running time and working principles in binary algorithms.

Inspired by learning mechanism in PSO, Chen et al. proposed a binary learning DE (BLDE) algorithm which effectively locates global optimal solution by studying from the last population (Chen et al. 2015). They theoretically prove the global convergence of BLDE and compare it with existing binary coded EAs through numerical experiments.

Biogeography based optimization (BBO) is a new EA, and Ma et al. analyzed the convergence of BBO on binary problem based on Markov chain model (Ma et al. 2014). Relevance theory presents that BBO only with migration and mutation will never converge to global optimal solution. However, the elitist BBO preserves the best candidate from the population and converges to global optima. Although there are several differences between GA and BBO, the paper proves that the convergence of BBO is similar to GA.

Sudholt and Witt studied the runtime of binary PSO and developed a theoretical understanding of the algorithm, especially from the perspective of computational complexity (Sudholt and Witt 2010). They start from the original equations of Kennedy and Eberhart in which the velocity is at a fixed interval  $[V_{min}, V_{max}]$  to prevent divergence. If the  $V_{max}$  is unchanged, its impact is catastrophic when the problem to be solved increases. Instead, they introduce a equation where the  $V_{max}$  is adjusted with growing dimension, and the new choice of the  $V_{max}$  leads to provably effective optimization time.

Doerr and Zheng theoretically analyzed the working principle of binary DE (BDE) and found that the behavior of BDE is completely different from classical EAs or distribution based methods (Doerr and Zheng 2020). It is impossible to prove all expected results with mathematical rigor due to the dependence of reusing the same individuals in mutation and selection operators, and they bring a more independent variant of BDE through mean field method in statistical physics. They experimentally prove its similarity to BDE, and rigorously certificate several statements only for the variant.

In PSO, the inertia weight is an important parameter that controls its search ability. There have been conducted in-depth studies it in continuous optimization, but there is a little research on binary problems. Liu et al. comprehensively studied the influence of the inertia weight on the performance of BPSO from both theoretical and empirical aspects (Liu et al. 2015). They propose a mathematical model to analyze the behavior of BPSO, and derive several lemmas and theorems about the inertia weight. Their research results illustrate that a small weight improves exploration ability and a large value encourages local search.

### 3.2 Binary benchmark functions

Classic binary test functions consist of Max-Ones and Royal-Road, and some scholars also employ continuous benchmark functions to verify the performance of binary algorithms. Rodriguez et al. proposed binary test functions consisting of 27 combinatorial optimizations (Rodriguez et al. 2012). 13 of which are obtained from manual problems, and the others are derived from practical applications. Table 5 lists their name, dimension ( $D$ ) and  $f$ , where  $f$  represents global optimum and all functions are expressed as maximization.

## 4 Binary metaheuristic algorithms in applications

Binary metaheuristic algorithms demonstrate excellent performance in engineering applications. According to different scenes, we introduce them in detail from knapsack, feature selection, scheduling, structure optimization, layout and parameter optimization, etc.

### 4.1 Packing problem/knapsack problem

Knapsack problem (KP) exists in scientific engineering applications, including finance, flexible manufacturing system, capital budgeting, project selection and loading, and is a well-known NP-hard optimization. Given a set of items with nonnegative weights and

**Table 5** Tackled test problems

Name	D	f
Royal road problem (400, 8)	400	1
Trap problem	36	220
Deceptive problem	39	390
Bipolar deceptive problem	396	1
Overlapping deceptive problem	399	1
M-Stat (100, 1200, 3)	100	1
M-Stat (100, 2400, 3)	100	1
NkLand (48, 4)	48	1
NkLand (48, 12)	48	1
HIFF (2, 5, true)	32	192
HIFF (3, 4, false)	81	211
PPeaks (10, 100)	100	1
PPeaks (100, 100)	100	1
PPeaks (50, 150)	150	1
PPeaks (50, 200)	200	1
BQP (bqp50-1)	50	2098
BQP (bqp500-1)	500	116586
BQP (be120.3.2)	120	Not known
BQP (be200.8.5)	200	Not known
Maxcut (pm1s_80.6)	80	73
Maxcut (w09_100.2)	100	2738
Maxcut (g05_100.5)	100	1436
Maxcut (pw05_100.6)	100	8217
Maxcut (ising2.5-250_5555)	250	1979449
Multiple knpsack p. (weish03)	30	4115
Multiple knpsack p. (pet5)	28	12400
Multiple knpsack p. (pb4)	29	95168

values (profits), KP selects several items to put in backpacks and has a specified capacity limitation to maximize profits. It is mathematically formulated as follows:

$$\begin{aligned}
 \max f(x) &= \sum_{i=1}^n p_i x_i, i = 1, 2, \dots, n \\
 \text{s.t. } \sum_{i=1}^n c_{ij} x_i &\leq b_j, j = 1, 2, \dots, m \\
 x_i &\in \{0, 1\}
 \end{aligned} \tag{14}$$

where  $n$  and  $m$  represent the numbers of items and constraints, and  $p_i$  is the  $i$ th capacity. It is mainly divided into three categories:

- (1) 0–1 KP: each item can only be selected once at most.
- (2) Multi-dimensional KP (MKP): if we have  $n$  items and  $m$  knapsacks with capacities not necessarily the same, knapsacks will be filled at the same time.

(3) Dynamic KP: the capacity, weight and profit of knapsacks dynamically change.

Laabadi proposed a binary crow search algorithm (CSA) to solve two-dimensional (2D) bin packing, which uses Sigmoid function for mapping real solutions to binary values (Laabadi et al. 2020). Bansal and Deep used a modified binary PSO (MBPSO) algorithm to solve 0-1 KP and MKP (Bansal and Deep 2012). Compared with basic BPSO, MBPSO introduces a new probability function maintaining population diversity and making it more effective in solving KPs. In BPSO, the velocity is limited to  $[0,1]$ . The probability of position switching is slow when its value is small and the probability reaches maximum when it is close to the  $V_{max}$ . The Sigmoid function of BPSO provides low diversity and low exploration. Linear normalization function replaces Sigmoid, and makes search process more exploration and efficient, as shown in Eq. (15).

$$X_i^d = \begin{cases} 1 & \text{if } (U(0, 1) < \frac{X_i^d + V_i^d + V_{max}}{1 + 2V_{max}}) \\ 0 & \text{else} \end{cases} \quad (15)$$

where  $V_i^d$  represents the  $d$ th dimension of  $V_i$ , and  $U(0, 1)$  is a uniformly distributed random number between  $[0,1]$ .

Agrawal et al. proposed a new binary version of gaining sharing knowledge-based optimization algorithm (NBGSK) to solve KPs with small and large dimensions (Agrawal et al. 2022a). The algorithm mainly includes binary junior gain sharing stage and binary senior gain sharing stage, and is able to efficiently explore and exploit binary search space. Population size gradually reduces with a linear function to improve performance and prevent solutions from falling into local optimum.

Based on the characteristics of MKP, the profit of each project and the overload/remaining capacity of every dimension are considered, and logarithmic utility function adjusts trade-off between objective and capacity constraints when implementing repair operation and local search (Li et al. 2020). Tinós and Yang's theoretically analyzed discrete dynamic optimization problem (DOP) according to fitness landscape during optimization process (Tinós and Yang 2014), and they focused on the problems of XOR DOP generator and dynamic KP. Tlili and Krichen studied double loading problem (DLP) which is used to optimize the number of trash bins in industrial parks (Tlili and Krichen 2015). In DLP, items are packed into boxes, then the boxes are loaded into a set of compartments while minimizing the number of used trash bins.

Considering real-time packaging constraints such as load-bearing, placement and orientation, Kanna et al. used GA to optimize three-dimensional (3D) packaging with any sizes in prismatic container (Kanna et al. 2018). The first nine binary digits represent the dimension of 3D box, and next three digits indicate the position of the box in the container following the last two digits which mean auxiliary components to identify a bin.

Zou and Chen extended KP to transportation power system (Zou and Chen 2019), and took into account the uncertainties of disruption, traffic demand, mitigation and repair costs. This issue is optimized with the combination of binary PSO and knapsack-based heuristic initialization, and a priority index for the mitigation and repair of faulty components is established according to solution results. Rahim et al. introduced a general architecture of demand side management (DSM) which integrates residence and smart area through wide area network, and solved it with MKP (Rahim et al. 2016). They adopt a combination model of time-of-use electricity price and inclined congestion rate, and experiments illustrate that energy management controller based on GA is better than

BPSO and ACO in terms of reducing electricity charge, minimizing peak-to-average ratio and maximizing user comfort. Hardware/software (HW/SW) partitioning is an important topic in the collaborative design of software and hardware, and also is an NP-hard problem. To solve HW/SW quickly and effectively with EA, Zhai et al. regarded it as a variant of KP (Zhai et al. 2021). Infeasible solutions are eliminated by the proposed greedy repair optimization algorithm, and binary EAs deal with HW/SW.

Hassan et al. presented a proposal for scheduling shuttle ambulance vehicles assigned to COVID-19 patients with discrete binary gaining-sharing knowledge-based optimization algorithm (DBGSK) (Hassan et al. 2021a), namely, multi-objective multiple 0–1 knapsack problem. The scheduling aims to achieve the best utilization of predetermined planning time slot where the utilization is evaluated through maximizing the number of evacuated people who might be infected with the virus to isolation hospital and maximizing the effectiveness of prioritizing patients relative to their health status.

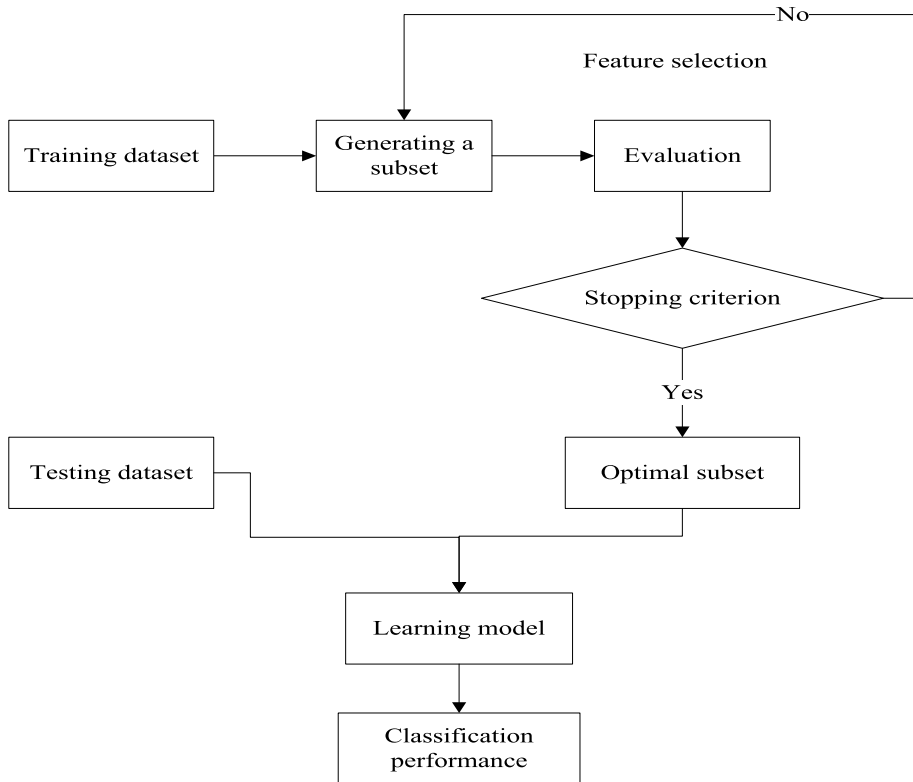
In sum, we list the optimization algorithms discussed and their applications, as shown in Table 6.

## 4.2 Feature selection problem

Feature selection utilizes a small part from original feature set to reduce data dimensionality, accelerate learning and improve performance (Paul and Das 2015; Campagner et al. 2021). Figure 4 shows the process of feature selection. When data dimension is too large, it becomes difficult to choose the best solution from  $2^D$  possibilities (Kanwal et al. 2021; Mandanas and Kotropoulos 2020). The goal is to reduce the number of features and improve classification quality, so it is optimized as a single- or multi-objective (Lima et al. 2021; Yan et al. 2016). Binary metaheuristic algorithms realize the jobs of prediction, recognition and classification through feature selection (Shu et al. 2016; Agrawal et al. 2021b).

**Table 6** The details of the cited references in KPs

Ref.	Optimization algorithm	Application	Convergence	Complexity	Scalability
Laabadi et al. (2020)	Binary CSA	2D KP	Low	Low	High
Bansal and Deep (2012)	Binary PSO	0-1 KP & MKP	Medium	Low	High
Agrawal et al. (2022a)	NBGSK	KP	Fast	Medium	Medium
Li et al. (2020)	Memetic Algorithm	MKP	Medium	Low	High
Tinós and Yang (2014)	GA	Dynamic KP	Low	Low	High
Tlili and Krichen (2015)	Modified PSO	DLP	Fast	Low	Medium
Zou and Chen (2019)	Binary PSO	Traffic-Electric Power	Medium	Low	High
Rahim et al. (2016)	GA	Energy Management	Low	Low	Medium
Zhai et al. (2021)	GA & Binary PSO Binary DE & GTOA	HW/SW Partitioning	Fast	High	Low
Hassan et al. (2021a)	DBGSK	Multi-Objective KP	Medium	Medium	Medium



**Fig. 4** The process of feature selection

In Faris et al. (2018b), Dhiman et al. (2021), Mafarja et al. (2019), Nadimi-Shahraki et al. (2022a), Agrawal et al. (2022b), they adopt S-shaped and V-shaped transfer functions to map search space to binary space. In Kumar and Bharti (2021), a hybrid method of binary PSO and sine cosine algorithm (SCA) chooses feature subset with rich information and performs cluster analysis where V-shaped transfer function calculates the probabilities of all particles changing their positions. The performance of two different transfer functions is studied in Abdel-Basset et al. (2020), and GWO-S performs better than GWO-V in most of datasets.

Agrawal et al. represented a binary variant of GSK with probability estimation operator (Agrawal et al. 2021a), and chaotic maps improve performance. Xue et al. proposed a multi-classifier PSO (SPS-PSO) algorithm based on self-adaptive parameter where a representation method of solutions and a generation strategy for five candidate solutions are brought and their parameter values automatically adjust during evolution process (Xue et al. 2020). SPS-PSO has favorably global and local search abilities when dealing with large-scale feature selection. Song et al. discussed a variable-size co-evolutionary PSO (VS-CCPSO) algorithm which adopts the idea of “divide and conquer” and uses space division strategy based on feature importance (Song et al. 2020). Related features are divided into the same subspaces with low computational cost, and the size of each subswarm is adaptive adjustment to save calculation cost. To protect the quality of

particles, VS-CCPSO deletes individuals by fitness-guided binary clustering method, and generates new particles with feature importance and crossover.

Multi-objective feature selection usually includes minimizing the number of selected features and minimizing classification error. Xu et al. (2020) proposed an EA based on repeated analysis for bi-objective feature selection in classification, and they improved a basic dominance-based EA framework from three aspects: the first is to modify reproduction process to improve the quality of offsprings; the second is to propose duplication analysis to filter redundant solutions; the third is to further select retained solutions according to diversity. Hancer et al. proposed a new multi-objective artificial bee colony (ABC) algorithm which combines nondominated sorting process and genetic operator (Hancer et al. 2018), and feature selection is realized by binary-continuous ABC.

Nondominated sorting genetic algorithm (NSGA-II) has been successfully applied to various feature selections, but (Karagoz et al. 2021) is the first to perform multi-objective parallel feature selection on the local descriptors of image/video datasets. It selects the minimum number of features in multi-label image/video datasets, and provides maximum prediction accuracy. Through multi-label classification technology, a subset of nondominated features are extracted and verified by pruned set (PS), classifier chain (CC), binary correlation (BR) and random k-Labelset (RAkEL). Hancer brought multi-objective DE for clustering and feature selection where a string coding scheme represents possible solutions (Hancer 2020). The scheme includes two matters: (1) a set of real numbers in the range of  $[-1, 1]$  indicating possible cluster centroid positions; (2) a set of activation codes in the range of  $[0, 1]$  meaning a possible feature subset. Suppose that the string scheme encodes  $D$ -dimensional datasets for  $L$  clusters, the length of a possible solution will be  $L * D + D$ .

#### 4.2.1 Prediction field

Prediction is an important data analysis method which mines the valuable information contained in database. At present, prediction technology has been extensively used in energy, finance, environment, meteorology and other fields, and has achieved excellent results, providing support for data analysis, project planning, scientific research and policy formulation. However, prediction models have great differences in feature selection and these characteristics make it difficult to suit for all fields. Moreover, real data often contains many uncertain factors such as noise, random disturbance, distortion and missing value, and they play a great impact on the performance of prediction models (Zheng et al. 2017; Niu et al. 2018).

A novel wind power prediction system is proposed by (Wang et al. 2019a) which is composed of feature selection, prediction model, system optimization and system evaluation modules, and it implements simultaneously deterministic and probabilistic predictions. In the feature selection module, a hybrid strategy determines the optimal input of the system, and in the prediction module, a recurrent neural network (RNN) based on dynamic reservoir theory is developed. In the system optimization module, an enhanced multi-objective algorithm optimizes system parameters to improve accuracy and stability, and the effectiveness and feasibility of the system are validated with the evaluation module. (Zhang et al. 2017) developed a new hybrid model for short-term wind speed prediction and proved its effectiveness. Real-valued backtracking search algorithm (BSA) optimizes the weights and bias of extreme learning machine (ELM), and binary BSA is used as a



feature selection approach to reconstruct input matrix from the candidate inputs predefined by partial autocorrelation function values. Because of the randomness and fluctuation of wind speed signal, variational mode decomposition (OVMD) filters out redundant noise. The parameters of OVMD are acquired with the center frequencies of models, and final result is constituted with residual evaluation index (REI) and the prediction results of the models.

The prediction of liquefaction sensitivity is a key issue that it has highly imbalanced dataset. The multi-objective feature selection algorithm proposed by Das et al. is applied to liquefaction sensitivity (Das et al. 2020) where NSGA-II and multi-objective symbiotic organisms search (SOS) algorithm are combined with learning algorithm, neural network (NN) and multi-variate adaptive regression spline to effectively find optimal parameters and minimize error. Sales forecasting uses historical data to predict the short-term or long-term future performance of enterprises. Jiménez et al. combined regression, model evaluation, random forest and decision-making to establish an accurate feature selection model for multi-objective online sales prediction (Jiménez et al. 2017). Mohanty et al. (2017) brought an effective prediction model for determining the pull-out capacity of small ground anchors where NN is a learning algorithm and NSGA-II performs feature subset selection.

Feature selection implements single- and multi-objective predictions in balanced and imbalanced datasets, and binary metaheuristic algorithms improve prediction accuracy.

#### 4.2.2 Biology & text recognition fields

In recent years, emotion recognition is an interesting research field because it has found many applications in real life. Mistry et al. (2016), Hassan and Mohammed (2020), Mlakar et al. (2017), Karthiga and Mangai (2019) proposed expression recognition systems with EAs and feature selection. Mistry et al. (2016) employed irreplaceable memory, new velocity update strategy, small population, deep local facial feature search based on subdimensions, and a cooperation of local and global search to alleviate the premature convergence of PSO. In Hassan and Mohammed (2020), the nodes and edges of a graph express facial region, while the frequent substructure of each emotion is constructed with graph mining algorithm. To reduce the number of generated subgraphs and improve classification accuracy, binary cat swarm algorithm (CSA) seeks final subgraphs. Based on the histogram of gradient descriptor and differential feature vector, Mlakar et al. (2017) recognized seven typical emotions by an improved multi-objective DE algorithm which is developed by the selection strategies of “emotion-specific features” and “more distinctive features for all emotions”.

Text classification is the process of classifying text documents into one or more predefined categories or similar document categories, but this process is a challenging task in machine learning mainly due to existing numerous discriminators. Chantar et al. proposed an improved GWO method to solve the problem of Arabic text classification under different learning models such as naive bayes, decision tree, K-nearest neighbor (KNN) and support vector machine (SVM) (Chantar et al. 2020). Thiyagarajan and Shanathi suggested a multi-objective text classification algorithm which has crossover in its operation (Thiyagarajan and Shanathi 2019). The optimal numbers of selected features are different in various datasets, and it is not the best method only extracting features based on the scores calculated with a metric because of converting many documents into zero length. In Huang et al. (2019), a multi-objective feature selection is modeled to obtain the

optimal number of selected features reasonably and automatically, and a parallel algorithm is designed using dynamic programming method to improve running time.

### 4.2.3 Hyperspectral imagery field

Hyperspectral image is composed of the data obtained by a large number of remote sensors, and it records hundreds of channels in the same scene. To improve transmission efficiency, hyperspectral images need to be compressed or segmented (Ghamisi et al. 2014).

Inspired by the clonal selection theory of artificial immune system (AIS), Zhang et al. proposed clonal selection feature selection (CSFS) and clonal selection feature weighting (CSFW) for dimensionality reduction in hyperspectral remote sensing images (Zhang et al. 2007). In CSF, each solution evolves in binary space, and the value of each bit is “1” or “0” which means that corresponding feature is selected or removed respectively. In CSFW, each antibody is expressed with a string containing integers and their corresponding weights. Shukla and Nanda described the selection of optimal bands as an unsupervised problem (Shukla and Nanda 2018). First, images are compressed with discrete wavelet transform, then images’ details in transform domain are extracted with the entropy of space information and the first-order spectral derivative of time redundancy. Finally, a new binary social spider optimization (SSO) algorithm optimizes these details to obtain final bands, which balances exploration and exploitation and avoids premature convergence.

The most important task of Mars rover is to automatically segment the images taken by frontline panoramic camera. Image analysis facilitates the navigation and positioning of Mars rover, but the transmission cost of images from Mars to Earth is very high. Rashno et al. introduced a new feature selection of Mars images based on wavelet and color features (Rashno et al. 2017). Selected features are applied to ELM classifier, and high-precision pixel result is obtained.

### 4.2.4 Gene field

The data of gene/microarray often contains thousands of dimensions, and a compact subset of genes is generated with feature selection to improve accuracy (Alshamlan 2018). Choosing an appropriate gene subset has strong practical value for cancer diagnosis and treatment (Pashaei et al. 2019).

To improve prediction accuracy and acquire more interpretable genes, (Han et al. 2017) combined binary PSO and gene-to-class sensitivity (GCS) information overcoming the shortcomings of traditional gene selection methods. Firstly, GCS information is acquired from gene data, and engages in gene selection revealing whether a gene is sensitive to sample categories. Secondly, the method adopts the proposed binary PSO to choose possible gene subsets from initial genes. Finally, GCS information is encoded into the operations of initializing particles, updating particles, modifying the velocity and adaptive mutation. To acquire the most predictive gene features, Xiong et al. provided a gene selection method (Xiong et al. 2019). A initial gene pool is divided into multiple clusters according to its structure, and then the least absolute shrinkage selection operator is used to opt genes with high prediction and calculate the contribution value which represents the sensitivity of genes to the classes of samples.

Most of existing feature selection methods adopt fixed-length solutions. When these methods are applied to high-dimensional data, they not only consume a lot of memory, but also require large computation time. Tran et al. proposed a variable-length PSO algorithm where particles have different lengths (Tran et al. 2018). By feature relevance, particles with short lengths obtain better classification performance, while particles with large lengths improve global search ability.

A multi-objective PSO is introduced by Wang et al. (2020b) optimizing four objectives, feature number, accuracy, and entropy-based correlation and redundancy. Firstly, it employs a new binary coding strategy to select informative genes. Secondly, a mutation operator improves search ability. Finally, the “best/1” mutation operator of DE promotes local search, and 41 cancer datasets prove the effectiveness of the algorithm.

Operon includes useful knowledge on protein function determination and drug design, however, current methods for operon detection are usually difficult to realize. Chuang et al. proposed a chaotic binary PSO to predict operons in bacterial genomes where fitness function is designed with participation in the same metabolic pathway, intergenic distance and the cluster of orthologous groups attributes of a genome (Chuang et al. 2013).

#### 4.2.5 Fault diagnosis field

Binary metaheuristic algorithms perform state monitoring and fault diagnosis on complex systems. Their purposes are to make timely and correctly judge on various abnormal states or faults and to improve equipment reliability and safety. The problems of the difficult extraction of feature information and long calculation time in fault diagnosis are solved with intelligent algorithms due to the advantage of collaboration among particles, and optimal feature set is generated (Baraldi et al. 2016).

Since projection data still overlaps significantly in subspaces, a single global transformation cannot offer great classification accuracy in multi-class tasks. Van and Kang developed a new wavelet kernel local fisher discriminant analysis (WKLFDA) where PSO chooses the parameters of WKLFD (Van and Kang 2015), and a one-to-one strategy converts tasks into all possible binary classification tasks to improve the performance of bearing defect classification. PSO-WKLFDA collects the effective features of each binary class, and a decision fusion method combines the classification result of each SVM classifier to identify final bearing state.

Baraldi et al. measured component degradation with health indicators from a set of the signals collected during operation (Baraldi et al. 2018), and they employed feature extraction and multi-objective binary DE to select the optimal feature subset defined by health indicators. Peimankar et al. introduced a two-step algorithm for power transformers fault diagnosis based on multi-objective particle swarm optimization (MOPSO) algorithm (Peimankar et al. 2017). First, the algorithm selects the most effective features and the small number of features in the multi-objective framework as input. Second, an ensemble classifier is created according to the most accurate and diverse classifiers. Finally, Dempster-Shafer theory combines the outputs of the ensemble classifier to determine the actual faults of power transformers.

## 4.2.6 Security field

The emergence and wide application of network have brought convenience to people's life and work, but it has also yielded many security problems. Huge losses are caused by various types of vulnerabilities and attacks. Feature selection extracts collected abnormal network data from normal data, so as identifying intrusion and normal network behavior. These problems are converted into optimal classification and solved by binary metaheuristic algorithms.

Intrusion detection system (IDS) technology is used in network security to protect sensitive assets. By implementing effective IDS as defense mechanism, cybersecurity risks can be lessened (Raman et al. 2017). Wazirali proposed an intrusion detection model based on adaptive fuzzy (FKNN) algorithm (Wazirali 2021). PSO optimizes the neighborhood size ( $K$ ) and fuzzy intensity parameter ( $m$ ) of FKNN, and binary PSO selects a subset of conditional features for detection. To skillfully adjust local comprehensive search skills of PSO, the system uses two control parameters including time-varying inertia weight and time-varying acceleration coefficient, and the proposed method acquires a large number of true errors with the least false positives and false negatives. Maza and Touahria claimed a new hybrid multi-objective feature selection algorithm (MOEDAFS) (Maza and Touahria 2019). By calculating the probability of each feature, four probability models are integrated into MOEDFS, and each feature subset selected by MOEDFS has better classification performance and fewer features. Data in IDSs often has the problem of unbalanced classification which obviously limits efficiency. Aiming at the problem, Zhu et al. improved the NSGA-III algorithm which uses probability-based bias selection to handle the problems of imbalance and fitting selection to eliminate redundant features (Zhu et al. 2017).

Irrelevant and redundant data in network traffic wastes lots of computation and storage resources, and reduces the accuracy of network anomaly detection. Zhang and Xie proposed a multi-objective feature selection algorithm to solve the problem (Zhang and Xie 2020). First, the proposed algorithm establishes evolutionary strategy pool and dominance strategy pool, and then designs random probability selection to improve the convergence and diversity of the algorithm. The model takes the number of selected features, accuracy, precision, detection rate and false positive rate as objective functions, and characterizes performance from different aspects. Malicious web domains pose huge threat to the privacy and security of users. As there is a large amount of free data on web domains in the Internet, Hu et al. investigated the performance of machine learning algorithms with such data, and adopted a feature selection method based on BPSO to identify malicious web domains (Hu et al. 2016). Zhang et al. introduced a new spam detection algorithm to reduce the false positives that incorrectly label nonspams as spams (Zhang et al. 2014). Firstly, they use binary PSO with mutation operator to implement feature selection. Secondly, crucial features are trained by decision tree classifier and K-fold cross validation. Finally, cost matrix assigns different weights to false positive and false negative errors.

The term "usability" describes software usability model based on hierarchical structure, and it has become one of the most important methods to measure software quality. Gupta et al. (2020a) proposed an improved CSA which finds usability features from hierarchical model and provides optimal solutions based on searching for useful features. Jain et al. developed an improved GWO for selecting the most important features in hierarchical software model (Jain et al. 2021). The permission set of an Android application is that it is required during installation. Bhattacharya et al. proposed a feature selection algorithm by

rough set and PSO in Android malware detection (Bhattacharya et al. 2019). They adopt a new random key encoding method to binarize PSO, and improve premature convergence. The quality of software features determines the performance of software defect prediction (SDP) model, but redundant and irrelevant features degrade the performance of built model. Ni et al. proposed a multi-objective feature selection which minimizes the number of selected features and maximizes the performance of constructed SDP model (Ni et al. 2019).

Risk-sensitive L2R attempts to learn models with good performance while reducing the risk of underperforming in a few but important queries. Sousa et al. introduced a new method to explore search space and proposed a new evolutionary algorithm (SPEA2) to evaluate the sensitivity and effectiveness of L2R (Sousa et al. 2019). Kozodoi et al. introduced a profit-centered feature selection framework which uses expected maximum profit (EMP) metric as objective function to extend the use of EMP to feature selection (Kozodoi et al. 2019). Then NSGA-II implements multi-objective feature selection, and adopts scorecard profitability and savings as fitness functions.

Souza et al. (2021) studied the over-fitting problem of binary PSO in wrapper feature selection, and proposed a method based on global verification strategy and external archive for handwritten signature verification. Cruz et al. developed a dynamic integration selection algorithm based on meta-learning which embeds multiple standards (Cruz et al. 2017). The system is coded into different meta-features, and its performance is advanced with a meta-feature selection method and overfitting cautious BPSO.

#### 4.2.7 Medical field

Mining medical data provides doctors with decision-making and support when diagnosing and treating patients. Through the integration and processing of a large amount of medical data, feature selection effectively reduces the complexities of analysis and calculation, and improves analysis effect. Binary metaheuristic algorithms have successfully applied in COVID-19 diagnosis, EGG, lesion malignancy classification, warfarin dose prediction, schizophrenia (SZ) disorder diagnosis and virtual screening (VS).

In the past 3 years, COVID-19 threatens the lives of the world people, and early detection is an important topic in disease treatment. Shaban et al. introduced a accurate detection strategy of diagnosing COVID-19 patients with distance biased naive bayes (DBNB) where advanced PSO selects the most informative and important features of patients (Canayaz 2021). Feature selection is implemented through filter and wrapper approaches, and DBNB is employed as classifier to accurately detect infected patients with minimal time penalty. Canayaz proposed a method based on deep learning which is used for early diagnosis of COVID-19 (Shaban et al. 2021). Firstly, a dataset composed of normal, pneumonia and COVID-19 lung X-ray images is created and image contrast enhancement algorithm preprocesses original dataset. Secondly, feature extraction is implemented from new dataset using deep learning models such as VGG19, ResNet, GoogleNet and AlexNet. Thirdly, binary PSO and binary GSO execute feature selection, and SVM classifies selected features.

One of the challenge tasks in brain-computer interface (BCI) is how to deal with high dimensionality data from electroencephalogram (EEG) signals. Pereira et al. systematically evaluated the performance of different variants of binary magnetic optimization algorithm (MOA) and used optimum-path forest as classifier (Pereira et al.

2019). They adopt wavelet transform to extract features from epileptic EEG signals and the proposed algorithms implement feature selection. Baig et al. proposed a new hybrid feature selection method which employs DE to search feature space and generate optimal subset (Baig et al. 2017), and they also conduct a comprehensive research on the significance of EAs in feature selection on EEG signals.

For feature selection in medical diagnosis, Anter and Ali designed a hybrid CSA combining chaos theory and fuzzy c-means algorithm (Anter and Ali 2020). CSA is used as global search and fuzzy c-means is regarded as objective function. Nadimi-Shahraki et al. proposed binary flame optimization algorithm (B-MFO) to select effective features from medical datasets (Nadimi-Shahraki et al. 2021a). Three types of B-MFO are developed using S-shaped, V-shaped and U-shaped transfer functions to convert MFO from continuous to binary. SZ is a common brain disease, and Manohar and Ganesan studied the relationship between the image textures of SZ and normal images (Manohar and Ganesan 2018). With mutual information entropy as objective function, a fuzzy SVM classifier based on BPSO distinguishes SZ individuals from healthy people.

The acquisition costs of features are different in medical data, Chen et al. suggested a feature selection method based on confidence and cost-effectiveness where BPSO improves the classification performance of healthcare data (Chen et al. 2019). Feature confidence, consisting of the correlation between features and classes, promotes search efficiency, and the algorithm considers the fine-grained impact on each dimension of a particle about classification performance.

VS has been proved to improve the success rate of drug discovery activity, but the prediction ability of VS needs to enhance due to the limitations of describing drug binding phenomena by the principles of basic physics. Jiménez et al. brought a multi-objective feature selection method for VS in drug discovery (Jiménez et al. 2019). A detailed comparison is made between ENORA and NSGA-II in accuracy, sensitivity and ROC. As decision support system is widely used in various fields, drug's dose prediction has become an important research field. Sohrabi and Tajik developed a multi-objective feature method to support warfarin dose prediction where NSGA-II and MOPSO extract clinical and genetic features and NN is used as classifier (Sohrabi and Tajik 2017).

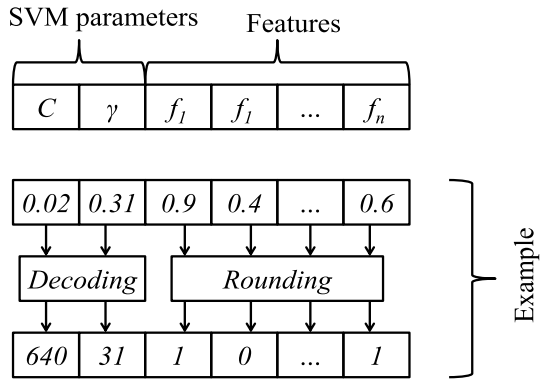
#### 4.2.8 Electricity field

Electric system is composed of power generation, transmission, transformation, distribution and consumption, and also has relevant information in all links to measure, control, regulate, protect, communicate and dispatch the production process of electric energy (Wang et al. 2020a; Hossain et al. 2019).

Wang et al. introduced a feature selection algorithm that employs the advantages of grey relational analysis (GRA) and BPSO (Wang et al. 2021), and modified initialization with GRA coefficient enhances optimization rate. The algorithm solves the large-scale feature selection of power system and finds out the features that are extremely related to target power system scene. In Ramos et al. (2016), Ramos et al. compared business loss in Brazil with the task of characterizing irregular consumers through black hole algorithm (HHA).

Eseye and Lehtonen (2020) predicted the short-time heat demand of buildings in district heating system through the integration of empirical mode decomposition (EMD), ICA and SVM. The model combined binary GA with Gaussian regression to acquire the most important and nonredundant features. Gu et al. proposed a feature selection method for transient stability assessment in power system based on kernelized fuzzy rough set

**Fig. 5** The encoding scheme of individuals for SVM optimization and feature selection



(KFRS) and memetic algorithm (MA) where original feature set derives from the operation parameters of power system (Gu et al. 2015) . KFRS-based generalized classification is adopted as separability criterion, and MA based on tabu search (TS) and binary DE acquires optimal feature subset with the largest solution quality. The algorithm avoids the information loss caused by feature discretization based on rough set, and improves classification ability.

### 4.2.9 Parameter optimization field

Classifiers judge the quality of selected features when performing feature selection, but the core parameters of some classifiers such as SVM need to be set in advance which are important for classification. Several algorithms optimize them while completing feature selection, so as achieving the purpose of maximizing prediction.

Based on feature selection and parameter optimization, (Niu et al. 2021) developed a short-term load prediction framework where original loads are decomposed into a series of relatively simple subcomponents with empirical mode decomposition. For each subcomponent, real-valued cooperation search algorithm (CSA) finds the best hyperparameters, and binary CSA is used as a feature selection tool to determine candidate input variables. Finally, the outputs of all sub-modules constitute final prediction result. Li and Yin proposed a multi-objective BBO to select a subset of informative genes (Li and Yin 2013). The algorithm first uses Fisher-Markov to select 60 top gene expression data, then the framework integrates nondominated sorting method and crowded distance method. Finally, the proposed method is adopted for gene selection, and the algorithm is validated by leave-one-out cross-validation (LOOCV) and SVM, as shown in Fig. 5.

Faris et al. proposed a robust method based on multi-variate optimization (MVO) which selects optimal feature subset and optimizes the parameters of SVM (Faris et al. 2018a). Individuals are encoded as real-number vectors, and the number of elements in each vector is equal to the number of features plus two representing parameters of SVM, cost ( $C$ ) and gamma ( $\gamma$ ). Each value is a random number between  $[0, 1]$ . Therefore, elements representing features are rounded, and for  $C$  and  $\gamma$ , they are mapped to different scales because their search spaces are different. For example, the element corresponding to  $C$  is mapped to  $[0, 3500]$ , and the value corresponding to  $\gamma$  is mapped to  $[0, 32]$ . In (Li and Yin 2013), the values of  $C$  and  $\gamma$  are linearly obtained by Eq. (16).



**Table 7** The details of the cited references in feature selection

Ref.	Optimization algorithm	Application	Convergence	Complexity	Scalability
Zheng et al. (2017)	PSO & GSA	Wind Speed Forecasting	Fast	High	Low
Niu et al. (2018)	BA	0-1 KP & Wind Speed Forecasting	Low	Medium	High
Zhang et al. (2017)	BSA	Wind Speed Forecasting	Low	Low	Low
Wang et al. (2019a)	MO GWO	Wind Power Prediction	Fast	High	Low
Das et al. (2020)	NSGA-II & MOSOS	Liquefaction Sensitivity Prediction	Fast	High	Low
Jiménez et al. (2017)	ENORA	Online Sales Prediction	Fast	Medium	High
Mohanty et al. (2017)	NSGA-II	Pull-Out Capacity Prediction	Medium	Low	Low
Mistry et al. (2016)	mGA & PSO	Facial Emotion Recognition	Fast	Medium	Medium
Hassan and Mohammed (2020)	Binary CSO	Facial Emotion Recognition	Medium	Medium	Low
Mlakar et al. (2017)	MO DE	Facial Emotion Recognition	Medium	Medium	Low
Karthiga and Mangai (2019)	MO GA	Facial Emotion Recognition	Medium	Medium	Medium
Chantar et al. (2020)	Binary GWO	Facial Emotion Recognition	Low	Medium	Medium
Thiyagarajan and Shanathi (2019)	MO AFSA	Text Classification	Medium	Medium	Medium
Labani et al. (2020)	MO GA	Text Classification	Low	Low	High
Ghamisi et al. (2014)	FODPSO	Hyperspectral Imagery	Fast	High	Low
Zhang et al. (2007)	CSA	Hyperspectral Imagery	Fast	High	High
Shukla and Nanda (2018)	Binary SSO	Hyperspectral Imagery	Low	Medium	Low
Rashno et al. (2017)	ACO	Image Segmentation	Low	Medium	Low
Alshamlan (2018)	ABC	Gene Selection	Medium	Low	High
Pashaee et al. (2019)	Binary BHA & BPSO	Gene Selection	Fast	High	High
Han et al. (2017)	Binary PSO	Gene Selection	Medium	Low	High
Xiong et al. (2019)	Binary PSO	Gene Selection	Fast	Low	Low
Tran et al. (2018)	PSO	Gene Selection	Medium	Low	High
Wang et al. (2020b)	MO PSO	Gene Selection	Low	High	High
Chuang et al. (2013)	Binary PSO	Operon Prediction	Fast	High	Medium
Baraldi et al. (2016)	Binary DE	Fault Diagnosis	Medium	Medium	High



**Table 7** (continued)

Ref.	Optimization algorithm	Application	Convergence	Complexity	Scalability
Van and Kang (2015)	PSO	Fault Diagnosis	Fast	Low	Low
Baraldi et al. (2018)	MO Binary DE	Fault Diagnosis	Fast	Medium	Medium
Peimankar et al. (2017)	MOPSO	Fault Diagnosis	Low	High	Medium
Raman et al. (2017)	GA	IDS	Fast	High	High
Wazirali (2021)	PSO & Binary PSO	IDS	Fast	High	Low
Zhu et al. (2017)	NSGA-III	IDS	Fast	Medium	High
Zhang and Xie (2020)	Many-Objective EA	Network Anomaly	High	High	High

**Table 8** The details of the cited references in feature selection -2

Ref.	Optimization algorithm	Application	Convergence	Complexity	Scalability
Hu et al. (2016)	BPSO	Identifying Malicious Web Domains	Medium	Low	High
Zhang et al. (2014)	Binary PSO	Spam Detection	Medium	High	High
Gupta et al. (2020a)	CSA	Software Usability	Medium	Medium	High
Jain et al. (2021)	GWO	Software Usability	Medium	High	High
Bhattacharya et al. (2019)	PSO	Android application Permissions	Medium	Low	High
Ni et al. (2019)	NSGA-II	SDP	Low	Low	High
Sousa et al. (2019)	SPEA2	Risk-Sensitive	Medium	Medium	High
Kozodoi et al. (2019)	NSGA-II	Credit Scoring	Low	Low	Medium
Souza et al. (2021)	Binary PSO	Handwritten Signature Verification	Medium	Low	High
Cruz et al. (2017)	BPSO	Meta-Learning	Fast	Medium	Low
Canayaz (2021)	Binary PSO & Binary GWO	COVID-19 Diagnosis	Fast	High	High
Shaban et al. (2021)	PSO	COVID-19 Diagnosis	Fast	High	High
Pereira et al. (2019)	Binary MOA	EEG	Low	Medium	High
Baig et al. (2017)	DE	EEG	Medium	Medium	High
Anter and Ali (2020)	CSA	Medical Diagnosis	Fast	High	High
Manohar and Ganesan (2018)	BPSO	SZ Diagnosis	Medium	Medium	Low
Chen et al. (2019)	Many-objective binary PSO	Healthcare Classification	Low	Low	High
Jiménez et al. (2019)	ENORA & NSGA-II	VS	Fast	High	High
Sohrabi and Tajik (2017)	NSGA-II & MOPSO	Warfarin Dose Prediction	Medium	Medium	Medium
Ramos et al. (2016)	Binary HHA	Theft Characterization	Low	Low	High
Wang et al. (2021)	BPSO	Power System Scenario Classification	Fast	High	Low
Eseye and Lehtonen (2020)	ICA	Energy Management	Fast	High	Medium
Gu et al. (2015)	MA & BDE & TS	Transient Stability Assessment	Fast	High	High
Niu et al. (2021)	CSA	Parameter Optimization	Low	High	Medium
Li and Yin (2013)	MO BBO	Parameter Optimization	Fast	Medium	High
Farris et al. (2018a)	MO MVO	Parameter Optimization	Low	High	Low

$$B = \frac{A - \min_A}{\max_A - \min_A} (\max_B - \min_B) + \min_B \quad (16)$$

To sum up, we list the optimization algorithms discussed and their applications, as shown in Tables 7 and 8.

### 4.3 Scheduling problem & resource management problem

Scheduling problem plans jobs, and plays an important role in wireless sensor network (WSN), energy, transportation and other systems. An effective scheduling method greatly improves resource utilization, and core issues are modeling and optimization algorithm. Scheduling are effectively solved by binary metaheuristic algorithms.

#### 4.3.1 WSN field

Resource allocation is an important part in wireless networks, however, its optimization is a nonconvex NP-hard problem. Binary metaheuristic algorithms deal with the task allocations of sensor nodes and base stations, broadcast scheduling, resource allocation and routing problems in WSNs.

A challenging issue of task assignment in WSNs is to reasonably allocate sensor nodes to reduce total power consumption and ensure that the task is completed on time. Guo et al. introduced a real-time fault-tolerant task allocation algorithm which uses primary/backup technology and passive backup copies overlapping to support fault-tolerant (Guo et al. 2014). Binary-valued matrix constructs optimization process, and objective function is composed of task execution time, ode energy cost and network load. Li et al. proposed an optimized sleep strategy based on cluster to relieve power consumption and interference in dense heterogeneous networks (Li et al. 2018). Small base stations with large interference are divided into clusters and binary PSO determines their sleep strategy. The algorithm enhances the sleep and activation efficiency of clusters, and reduces the interruption probability of the system.

In resource allocation, Pham et al. studied the applicability of whale optimization algorithm (WOA) and introduced a penalty method to deal with optimization constraints (Pham et al. 2020). They test three examples in wireless networks, including power allocation for energy and spectral efficiency trade-off, power allocation for maximizing secure throughput, and mobile edge computing offloading, and also use WOA to deal with resource allocations in 5G wireless networks. In view of heterogeneous vehicle communication environment, Liu et al. suggested an SDN-based service architecture which supports the centralized scheduling of vehicles (Liu et al. 2017), and introduced a new code-assisted broadcast scheduling (CBS) problem which aims to combine vehicle cache and network coding into the scheduler. Because CBS is an NP-hard problem, MA solves data dissemination in vehicle networks.

QoS multi-cast routing is a major research field in wireless mesh network transmission. By introducing inertia weight into the velocity update equation (Meraihi et al. 2019), binary bat algorithm (BA) is improved, and then a appropriate value is selected through chaotic map, uniform distribution and Gaussian distribution. The algorithm meets the constraints of multiple QoS such as bandwidth, delay and packet loss rate, and obtains a low-cost multi-cast tree. Shen et al. proposed a bi-velocity discrete PSO and employed it

to complete multi-cast routing (Shen et al. 2014). The bi-velocity strategy represents the possibility that a dimension is “1” or “0” where “1” means selecting a node to construct multi-cast tree and “0” means nonselecting.

### 4.3.2 Unit commitment (UC) field

The task of UC is to reasonably arrange the start-stop status and load distribution of units, so as to satisfy load demand during dispatching period and minimize the cost of power generation under the constraints of generator units and system. UC is a binary scheduling optimization problem, that is, whether unit status is on or off (Pan et al. 2021a).

Panwar et al. proposed three binary GWO models where Sigmoid and tanh transfer functions realize binarization (Panwar et al. 2018). Transmission line rating affects the economic and security of power system, while geographic information system (GIS) is becoming more and more important in the generation and planning of power system. Hemparuva et al. introduced a dynamic route rating based on GIS and weather, and studied its effectiveness in security constrained unit commitment problem (SCUCP) (Hemparuva et al. 2018).

Yang et al. (2017, 2019), Wang et al. (2019b) solve the UCs of plug-in electric vehicles. Yang et al. developed a hybrid power UC with renewable energy power and the charging and discharging management of plug-in electric vehicles, which combines hybrid topology binary PSO, adaptive DE and lambda iteration method Yang et al. (2017). The algorithm intelligently determines the on/off state of each thermal unit, the generation power of on-line unit and the DSM of plug-in electric vehicles. For charging and discharging with a large number of plug-in electric vehicles, Yang et al. suggested a new hybrid coded heuristic algorithm which uses binary PSO based on V-shaped symmetric transfer function Yang et al. (2019), and the influence of transfer function on UC is studied in a 10 power system containing 50,000 plug-in electric vehicles. Wang et al. proposed a parallel framework that simultaneously solves the coordinate UC and DSM of plug-in electric vehicles (Wang et al. 2019b). Real-valued competitive swarm optimization (CSO) improves the flexible access of demand side load and adjusts the disordered charging load of power system. Due to its unique binary switching and large-scale characteristics, binary CSO is improved to optimize states. Then in parallel optimization process, weighting factor is integrated into the framework to analyze the influence of demand side load on the system.

### 4.3.3 Energy management field

Power system is a large and complex economy. Under the background of increasing scale and higher requirements for multiple quality indicators, we face various compound optimization problems to ensure the realization of power system operation (Abdolrasol et al. 2021; Wu et al. 2000; Nojavan et al. 2015). Its complexity is mainly reflected in multi-objective, various constraints, multi-extreme, high-dimension and uncertain factors, and they bring major challenges to modeling and algorithm innovation. Binary metaheuristic algorithms have been applied in the field of power optimization because of their simple implementation and parallel search (Pedrasa et al. 2009; Mellal and Williams 2020; Li et al. 2016).

In power dispatching, Fang et al. adopted cascading fault model and multi-objective nondominated sorting binary differential evolution algorithm (NSBDE) to solve the link allocation of generators and distributions (Fang et al. 2015). A low computational cost topology model is used to simulate and quantify network’s resilience to the cascading failures caused by target attacks, and they apply the algorithm to 400 kV French transmission network with the goal of minimizing investment costs and maximizing network’s ability to recover from cascading failures.

To simulate wind power generation scenarios, Tan et al. constructed initial scene set through interval method and used Kantorovich distance to create scene reduction strategy (Tan et al. 2014). Energy storage systems and demand responses are employed to power generation side and demand side respectively, and a two-stage scheduling model is built for wind power storage system. Then, a chaotic binary PSO algorithm solves the proposed model and the deficiency that BPSO falls into local optimality. Nojavan et al. developed a new method of preventing voltage instability, and took the optimal switching of transmission lines as a new means to reduce the cost of voltage stability margin by improved binary PSO (Nojavan et al. 2018). Distribution network loss is one of the most significant troubles in the operation of distribution network, and reconfiguration is an important optimization process for loss reduction in the network (Elsied et al. 2016). Milani and Haghifam discussed a basic reconstruction model, and gradually formed an evolutionary method with optimal time interval (Milani and Haghifam 2013). GA handles the proposed model, and it is tested on IEEE 33 Bus network.

In energy management, Khan et al. proposed a priority-induced DSM strategy based on load transfer technology considering the energy cycles of equipment (Khan et al. 2019). The proposed day-ahead load transfer technology is mathematically formulated as a MKP, and three metaheuristic optimization techniques, GA, enhanced DE and binary PSO, are embedded in the proposed autonomous energy management controller. Ayub et al. (2020) designed a robust energy management technology that monitors and controls residential loads in smart homes meeting the requirements of user-defined preferences. They adopt an improved binary GWO which provides customers with maximum satisfaction under predefined user budge. To reduce the consumption and cost of power grid, Faisal et al. studied PSO based on fuzzy controller for the charging–discharging and scheduling of battery energy storage system (ESS) in microgrid (Faisal et al. 2020). Fuzzy logic controller (FLC) controls the charging and discharging of ESS, and the parameters of FLC is optimized by PSO with load demand, available power, battery temperature and charging state.

Scholars not only use binary metaheuristic algorithms, but also improve them to better work out energy optimizations. Li et al. (2016), Tan et al. (2014) and He et al. (2019) adopt new binary coded approaches to implement space transformation, as shown in Eqs. (17) and (18).

$$T(x) = \begin{cases} \frac{2}{1 + e^{-x}} - 1 & \text{if}(rand > 0) \\ 1 - \frac{2}{1 + e^{-x}} & \text{else} \end{cases} \tag{17}$$

$$X_i^d = X_i^d + F_i \otimes (X_{r1}^d \oplus X_{r2}^d) \tag{18}$$

where “+”, “ $\otimes$ ” and “ $\oplus$ ” represent “OR”, “AND” and “XOR” operators, respectively.

#### 4.3.4 Other fields

Scheduling problems optimized by binary metaheuristic algorithms also include ship scheduling (Karbassi Yazdi et al. 2020), timetable (Ji et al. 2018; Yang et al. 2014), diet planning (Wulandhari et al. 2019), medication time (Neri et al. 2007), infectious disease control (Zhao et al. 2019), calculation unloading (Du et al. 2018) and test cases (Han et al. 2020).

Karbassi et al. proposed a binary PSO to optimize ship routing and scheduling for liquefied natural gas (LNG) transportation (Karbassi Yazdi et al. 2020). Ji et al. studied the joint scheduling of cascaded ship locks with multi-chambers in water transportation (Ji et al. 2018). The algorithm divides the problem into three interrelated subproblems, each of which has simple structure and high flexibility. Outer layer and inner layer respectively involve the number of ship locks and the sum of ship arrangements. As a bridge connecting the two layers, inter layer is a ship lock direction combination and timetable trouble which is a high-dimensional mixed integer optimization. A hybrid method, quantum-inspired GSA and improved moth-flame optimization (MFO) algorithm, works out the optimization, and two different scheduling rules test the proposed algorithm. Train timetable determines the arrival and departure time of trains. Yang et al. proposed a timetable optimization model in subway systems that improves the utilization of renewable energy while reducing passengers' waiting time (Yang et al. 2014). Bi-objective optimization model is built with headway and dwell time control, and binary coded GA solves the model.

Wulandhari et al. proposed a binary PSO algorithm which searches the optimal combination of food portion and food selection according to individual daily eating habits (Wulandhari et al. 2019). To find the best multi-drug treatment plan for HIV, Neri et al. proposed an adaptive multi-MA which includes the characteristics of evolutionary framework and three local searchers intelligently activated by adaptive rules (Neri et al. 2007). The first local search is high exploration because it performs random search on all variables of candidate solutions. The second local search is extreme exploitation since it processes one variable. The third local search has intermediate exploration/exploitation characteristics, and uses simulated annealing (SA) to jump out of suboptimal domain to search new promising directions. Zhao et al. developed a networked epidemic control system with binary PSO (Zhao et al. 2019). An improved susceptible-exposed-infected-vigilant (SEIV) model simulates the spread of infectious diseases, and a specific resource description model imitates real world goods/services and their assignment. Based on these two models, a stochastic optimization strategy is introduced, in which each particle determines its own solution according to its excellent neighborhood and the historical search experience of the whole swarm without additional related information.

Computation offloading is critical for computationally intensive applications in mobile user equipment (UE). Du et al. solved it in a hybrid fog and cloud computing system which consists of a fog node, a powerful cloud center and UEs (Du et al. 2018). Unloading decision is obtained through binary customized firework algorithm (FA), and maximum delay among UEs is minimized with the joint optimization of offloading decision and computational resource allocation. Han et al. developed a test configuration method based on GA and binary PSO (Han et al. 2020). This method combines the global search ability of GA with the optimization speed of binary PSO, and uses Bayesian network model to obtain accurate testability indicator in limited time.

In general, we list the optimization algorithms discussed and their applications, as shown in Table 9.

## 4.4 Structure optimization problem/model optimization problem

The optimization processes of materials and engineering structures involve binary issues, for example, whether the units of array antenna are turned on; whether material surface is coated with metal; whether a model adopts certain structure/layout, etc.

### 4.4.1 Antenna design

Smart antenna, also known as adaptive antenna array, achieves directional acquisition through programmable antenna units, thereby improving the directional characteristics of the link between mobile terminal and base station. By adjusting the direction of beam, smart antenna increases gain and saves the transmission power of signals. Some indicators evaluate its performance, such as array gain, sidelobe level, interference cancellation ratio and the direction of arrival estimation error, etc (Aldhafeeri and Rahmat-Samii 2019; Modiri and Kiasaleh 2011).

Choo et al. reported the application of GA in the design optimization of small wire antenna considering bandwidth, antenna size and efficiency (Choo et al. 2005). Multi-segment wire structure is adopted and the performance of each wire structure is predicted by numerical electromagnetics program (NEC). The proposed algorithm adopts binary chromosome representing wire shape, and includes a two-point crossover scheme with three chromosomes and a geometric filter. Dong et al. proposed an improved binary PSO algorithm for designing compact, multi-functional and high-dimensional fragment-type antenna (Dong et al. 2017). First, random initialization is replaced with orthogonal array, and is uniformly sampled to obtain better population diversity. Then, a transfer function with time-varying deals with the problem that BPSO is easy to fall into local optimum.

In engineering electromagnetics, Jin and Rahmat-Samii applied a hybrid real-binary PSO (Jin and Rahmat-Samii 2010). Each candidate is composed of the real and binary variables which are optimized according to the velocity and position update equations of PSO and BPSO, and single- and multi-objective versions are verified by functional test bench. Choo et al. used GA to design the optimal shape of corrugated coating under grazing incidence (Choo et al. 2003), and each shape of coating is coded as binary chromosome. To improve optimization ability, a two-point crossover scheme is proposed containing geometric filter and chromosomes, and the algorithm presents a relationship between absorption performance and coating height and weight.

Frequency selective surface (FSS) is widely used in commercial and military fields. Chakravarty et al. proposed a method to design broadband microwave absorbers by multiple FSS shields embedded in dielectric material (Chakravarty et al. 2002), and binary coded micro genetic algorithm (MGA) optimizes the parameters of thickness, relative permittivity and placement.

### 4.4.2 Chip field

With the increasing scale of integrated circuits and the decreasing size of chips, the distribution of chips seriously affects the performance of chips.

Reed-Müller (RM) logic circuit is commonly adopted in binary algorithms. He et al. used a new binary DE algorithm to search for the best polarity RM logic circuits under performance constraint (He et al. 2017). Zhang et al. brought niche GA to improve the efficiency of area optimization in fixed-polarity RM (FPRM) circuit and find the best

**Table 9** The details of the cited references in scheduling

Ref.	Optimization algorithm	Application	Convergence	Complexity	Scalability
Guo et al. (2014)	Binary PSO	Task Allocation in WSN	Medium	Low	High
Li et al. (2018)	BPFO	Sleep Strategy in Dense Heterogeneous Networks	Medium	Low	High
Pham et al. (2020)	WOA	Resource Allocation in WSN	Medium	Medium	High
Liu et al. (2017)	Memetic Algorithm	Broadcast Scheduling in SDN-Based Vehicular Networks	Low	Low	High
Meraithi et al. (2019)	Binary BA	QoS Multi-cast Routing	Medium	High	High
Shen et al. (2014)	Discrete PSO	Multi-cast Routing	Medium	Medium	High
Panwar et al. (2018)	GWO	UC	Low	Medium	High
Pan et al. (2021a)	BFMO	UC	Fast	High	High
Hemparuva et al. (2018)	PSO & Binary PSO	UC	Medium	Low	High
Yang et al. (2017)	Binary PSO & DE	UC	Fast	High	High
Yang et al. (2019)	Binary PSO	UC	Medium	Low	High
Wang et al. (2019b)	CSO	UC	Fast	High	High
Abdolasol et al. (2021)	Binary	Energy Scheduling	Medium	High	Low
Wu et al. (2000)	GA	Hydro-Thermal Scheduling	Medium	Medium	High
Nojavan et al. (2015)	Binary ICA & BPFO	Energy Procurement Management	Fast	High	High
Pedrasa et al. (2009)	Binary PSO	Power Dispatching	Fast	High	Low
Mellal and Williams (2020)	Cuckoo Search Algorithm	Heat and Power Economic Dispatch	Medium	Medium	High
Li et al. (2016)	Binary PSO	Microgrid Dispatch	Medium	Medium	High
He et al. (2019)	SHADE	Integrated Scheduling of Power	Fast	Medium	Low
Fang et al. (2015)	NSBDE	Cascade-Resilient Electrical Infrastructures	Medium	Medium	Low
Tan et al. (2014)	Binary PSO	Wind Power Scheduling	Medium	Medium	High
Nojavan et al. (2018)	Binary PSO	Transmission Line Scheduling	Medium	Medium	High
Elsied et al. (2016)	Binary PSO	Energy Management	Medium	Low	High
Milani and Haghifam (2013)	GA	Distribution Network Reconfiguration	Low	Low	High



**Table 9** (continued)

Ref.	Optimization algorithm	Application	Convergence	Complexity	Scalability
Khan et al. (2019)	GA & DE & Binary PSO	Energy Management	Fast	High	High
Ayub et al. (2020)	Binary GWO	Energy Management	High	High	Medium
Faisal et al. (2020)	PSO	Charging–Discharging of Battery	Medium	Low	Medium
Li et al. (2016)	Binary PSO	Microgrid	Medium	Medium	High
Tan et al. (2014)	Binary PSO	Wind Power Scheduling	Medium	Medium	High
Karbassi Yazdi et al. (2020)	Binary PSO	Ship Scheduling	Low	Low	High
Ji et al. (2018)	GSA & MFO	Co-Scheduling of Cascaded Locks	Fast	High	Low
Yang et al. (2014)	Multi-Objective GA	Train Schedule	Low	Low	High
Wulandhari et al. (2019)	Binary PSO	Diet Planning	Medium	Low	High
Neri et al. (2007)	Memetic Algorithm	HIV Multi-drug Therapies	Fast	High	High
Zhao et al. (2019)	Binary PSO	Networked Epidemic Control	Medium	Low	High
Du et al. (2018)	Binary MFO	Calculation Unloading	Medium	Medium	High
Han et al. (2020)	GA & Binary Discrete PSO	Test Configuration	Fast	High	Low

polarities of FPRM (Zhang et al. 2011). Because the number of optimal polarities cannot be determined in advance, niche radius is adjusted according to the real-time information of the algorithm, avoiding the defect of parameter setting.

Mak et al. studied a compact power splitter to design a standard foundry silicon photonic platform with BPSO in 2D mesh (Mak et al. 2016). They demonstrate a design with  $4.8 \mu\text{m} \times 4.8 \mu\text{m}$  footprint which contains  $100 \text{ nm} \times 100 \text{ nm}$  and  $200 \text{ nm} \times 200 \text{ nm}$  cells. The design has low insertion loss and wide bandwidth, and presents consistent behavior on the whole wafer. Mirjalili et al. designed the first binary version of BA and applied it to optical buffer design (Mirjalili et al. 2014). 193-nm immersion system is unsuitable for high quality lithography due to the expensive complexity of mask pattern. Kuo et al. used source optimization technology to improve lithography resolution where binary ACO algorithm constructs freeform sources to improve contrast and process window (Kuo et al. 2016).

#### 4.4.3 Engineering structure optimization

Structural design optimizes weight and cost meeting various specifications or different requirements, that is, optimal scheme is found among all feasible solutions according to certain standard. The purpose is to make designed structure more economical material and more reasonable load-bearing distribution, and its content includes structural size optimization, shape optimization and topology optimization (Zhou et al. 2017; Di Cesare et al. 2016).

Truss layout optimization is the process of optimizing truss structure under the restraints of shape, size and topological variables (Richardson et al. 2012). Chen et al. claimed an improved two-level approximate GA which minimizes the weight of trusses by shape variables and shape sensitivities (Chen et al. 2017). Real coded GA presents shape variable and binary coded GA means 0/1 topological variable. Luh et al. adopted the concept of genotype-phenotype representation to improve binary PSO and applied the algorithm in structural topology optimization to minimize weight and compliance (Luh et al. 2011).

Lanthanum-modified lead zirconate titanate (LLZT) driver converts light energy into mechanical motion, and has potential application in smart structures. Zheng et al. introduced a novel algorithm based on GA for LLZT to control the multi-modal vibration of beam structure with the goal of maximizing modal force index (Shijie et al. 2014). Zio et al. discussed the optimization of key infrastructure protection strategies in complex network system (Zio et al. 2012). Three protection strategies minimize the effects of cascading failures on predetermined areas, the system and two protection intervention scales, and they employ an improved multi-objective binary DE to implement the strategies and overcome the time-consuming problem of such optimization.

#### 4.4.4 Other fields

Binary metaheuristic algorithms not only solve set covering problem, but also optimize the engineering structure of physics, chemistry and acoustics.

The traditional identification method of minimum cut set is not suitable for prime implication (PI) in the noncoherent structure function of dynamic system. Di et al.

proposed an calculation method to solve PI and used Eq. (19) as its transfer function (Di Maio et al. 2017). Through an improved binary DE, it finds PI that covers all minimum items.

$$T(X_i) = \frac{1}{1 + e^{-\frac{2b(X_i + F(X_i - X_m) - 0.5)}{1 + 2F}}} \quad (19)$$

where  $F$  is a weighting factor and  $b$  is a coefficient with the value of 6.  $l$  and  $m$  are two randomly chosen individuals.

Huang et al. used GA to search the global structure of  $B - Al$  binary clusters, and optimized them under density functional theory (Huang et al. 2016). The results show that in binary cluster, its structure is gradually transformed from icosahedron to quasi-planar with the increase of the number on  $B$  atoms, and the structure is determined by the ratio of  $B$  to  $Al$  atoms. Sieber and Werner introduced a novel method for synthesizing metamaterials with Bessel surface and the method is handed by real-valued optimization technique with covariance matrix adaptive evolution strategy (Sieber and Werner 2014). It compares computational efficiency between optimizing the quarter-wave plate metasurface of Bézier and optimizing pixelized surface by binary GA. Through acoustic Rayleigh-Sommerfeld diffraction integral and BPSO, Zhao et al. realized the free manipulation of focusing characteristics in acoustics for the first time (Zhao et al. 2014).

Xia et al. proposed an optimized transposition method for power transformer windings, and combined co-Kriging into binary PSO to minimize circulating current loss (Xia et al. 2015). Co-Kriging obtains most samples from data with low accuracy but low cost, and only acquires few samples from data with high accuracy but high cost, so as to improve fitting accuracy and reduce computational cost.

In brief, we list the optimization algorithms discussed and their applications, as shown in Table 10.

## 4.5 Layout problem/location problem

In engineering applications, there are many optimization tasks related to location/placement, such as the allocation of phasor measurement unit (PMU), the deployment of nodes and hubs in WSN, the deployment of cloud computing nodes and virtual machines (VMs) in Internet of Thing (IoT), the deployment of power facility nodes, the selection of warehouse location, the deployment of distribution center etc. First, corresponding mathematical models are constructed, and then “0” and “1” variables indicate whether to deploy nodes in certain location. Finally, binary metaheuristic algorithms seek optimal location/deployment satisfying application constraints.

### 4.5.1 PMU allocation

PMU plays an important role in the wide-area monitoring and protection of modern power systems, and its deployment is restricted by the high cost of equipment. Binary metaheuristic algorithms have successfully solved the optimal deployment of PMUs (Elroby et al. 2019).

Abd et al. proposed an improved binary PSO which uses mutation strategy, and V-shaped and S-shaped transfer functions to maximize measurement redundancy under

**Table 10** The details of the cited references in structure optimization

Ref.	Optimization algorithm	Application	Convergence	Complexity	Scalability
Aldhafeeri and Rahmat-Samii (2019)	Binary Brain Storm Optimization	Antenna Design	Low	Medium	High
Modiri and Kiasaleh (2011)	Binary PSO	Antenna Design	Medium	Medium	High
Choo et al. (2005)	Multi-Objective GA	Antenna Design	Low	Low	High
Dong et al. (2017)	Binary PSO	Antenna Design	Medium	Medium	High
Jin and Rahmat-Samii (2010)	PSO & Binary PSO	Engineering Electromagnetics	Medium	Medium	High
Choo et al. (2003)	GA	Magnetic Radar	Low	Medium	High
Chakraborty et al. (2002)	MGA	FSS	Medium	Medium	High
He et al. (2017)	Binary DE	Logic Circuit	Medium	Medium	High
Zhang et al. (2011)	GA	Logic Circuit	Medium	Medium	High
Mak et al. (2016)	Binary PSO	Foundry Silicon Photonic Platform	Medium	Low	High
Mirjalili et al. (2014)	BBA	Optical Buffer Design	Low	Medium	High
Kuo et al. (2016)	Binary ACO	Nanolithographic Imaging	Medium	Medium	High
Zhou et al. (2017)	GA	Truss Optimization	Low	Low	Medium
Di Cesare et al. (2016)	Binary PSO	Topological Optimization	Medium	Low	High
Richardson et al. (2012)	Binary PSO	Topological Optimization	Medium	Low	High
Chen et al. (2017)	GA	Truss Optimization	Medium	Medium	Medium
Luh et al. (2011)	Binary PSO	Topological Optimization	Medium	Medium	High
Shijie et al. (2014)	GA	PLZT	Low	Low	Low
Zio et al. (2012)	Binary DE	Grid Topology	Medium	Medium	High
Di Maio et al. (2017)	Binary DE	PI	Fast	Medium	High
Huang et al. (2016)	GA	Chemical Cluster Structure	Low	Low	Low
Sieber and Werner (2014)	GA	Pixelated Surface	Medium	High	High
Zhao et al. (2014)	BPSO	Acoustic Focusing	Medium	Low	Low

**Table 10** (continued)

Ref.	Optimization algorithm	Application	Convergence	Complexity	Scalability
Xia et al. (2015)	Binary PSO	Power Transformer Windings	Medium	Low	High

the constraints of zero-injection bus, single PMU loss and PMU channel (Abd Rahman and Zobaa 2017). Mutation strategy and V-shaped Sigmoid function improve population diversity and reduce the chance falling into local optimum. To provide multiple solutions, Maji and Acharjee developed an exponential binary PSO algorithm (Maji and Acharjee 2017). The algorithm uses nonlinear inertia weight to improve search ability and adopts a new mathematical equation to update the positions of particles as shown in Eq. (20).

$$T(x, V_i^d) = \frac{V_{max} + V_i^d + x}{2V_{max} + 1} \quad (20)$$

The purpose of traditionally optimal PMU layout is to find the smallest number of devices that maximize observability under different constraints. Due to great improvement in relay technology, digital relay is used as relay and PMU, leading to a lot of deployment costs in substation installation. Therefore, Mishra et al. adopted binary PSO to minimize the number of substations under practical constraints (Mishra et al. 2016a). Based on the measurement reliability of sensitive bus, Maji and Acharjee combined a stage-wise PMU allocation method with binary CSA (Maji and Acharjee 2018). The validity of multiple results is analyzed when solving PMUs, and sensitive bus observability assessment is mathematically modeled with generator, weak current and transformer connected buses to determine the best result.

#### 4.5.2 Network field

WSN integrates micro-electromechanical technology, sensor technology, embedded technology, wireless communication technology and distributed information processing technology, and is a research hotspot. Sensor nodes are subject to their own size, weight, power consumption and cost, harsh deployment environment and numerous external interferences, and they are prone to failure, energy exhaustion, and environmental damage affecting network stability and its reliability (Singh et al. 2021; Swayamsiddha et al. 2019).

In response to hub location problem in competitive environment such as passenger transportation network, Niknamfar et al. proposed a multi-objective BBO where the model minimizes the total transportation cost of a company and maximizes total captured flow (Niknamfar et al. 2017). Ma et al. proposed joint optimization for anchor deployment and power allocation to achieve high-precision positioning in wireless networks (Ma et al. 2020). The goal is to minimize positioning error under given sensors and fixed power budget, while the optimization is solved by binary PSO through using square error as a metric. To maximize the performance of heterogeneous WSN and save network cost, YU et al. proposed a clustering routing algorithm based on wolf pack algorithm (WPA) (Xiu-Wu et al. 2020). First, a mixed integer represents the optimal deployment of heterogeneous nodes. Second, WPA is improved through logistic function and levy flight, and it works out routing problem. Finally, nodes in heterogeneous network are dynamically cluster with improved distributed energy-efficient clustering algorithm to reduce transmission time.

Due to high peak to average power ratio (PAPR), additive Gaussian white noise plays a great impact on visible light communication (VLC) with white light emitting diodes. To solve this problem in 5G networks, Sindhuja and Shankar employed selective mapping (SLM) to reduce PAPR and binary CSA optimizes subblock partition in SLM

to improve its convergence rate on VLC system (Sindhuja and Shankar 2020). Industrial wireless sensor network (IWSN) is a new technology that greatly reduces control cost and advances production efficiency. Wang et al. studied the optimal placement of nodes in IWSN to ensure network reliability and reduce costs (Wang et al. 2011). A node layout model of IWSN is established considering the costs of installation, maintenance, reliability and scalability, and advanced binary PSO with adaptive mutation probability searches for optimal placement solution. Moreno et al. combined a ray tracing tool with BPSO to design indoor wireless local area network (WLAN) (Moreno et al. 2015). The power levels of candidate access points (APs) are acquired by the ray tracing tool at potential receiver locations, and are optimized by BPSO. Several restrictions are imposed to select a small number of APs and their channel assignments maintain low transmission power levels. In practice, different coverage priority areas are predefined in process to improve the quality of QoS.

### 4.5.3 Cloud computing and fog computing

With the development and popularization of cloud computing and fog computing, resource management, operational efficiency and investment have become key issues. In application environment, resource management and task scheduling consider a variety of heterogeneous resources and complex and changeable application requirements, including the overall energy consumption of data center, resource utilization, economic benefits and user service quality. These problems are usually interrelated and cannot be solved by simple weight assignment. Therefore, the scheduling problem of cloud computing has the common characteristics of discrete optimization and multi-objective optimization, and it is very suitable for optimization algorithms.

Zhu et al. proposed a model for delay and task allocation in vehicular fog computing where the model supports the mobility of vehicles (Zhu et al. 2018). Task allocation between fixed and mobile fog nodes is described as joint optimization under the limitations of fog capacity, quality loss and service delay, and binary PSO is utilized. Reducing energy consumption is a current research hotspot in fog computing environment, and consumption mainly depends on the technology that distributes services to a group of VMs. Mishra et al. used PSO, binary PSO and BA to implement sustainable service allocation (Mishra et al. 2018).

IoT includes a large-scale of physical infrastructures and software layers that create applications intuitively and transparently. This highly distributed and energy-consuming model safeguards the quality of deployed services, and also protects the heterogeneity of protocols. Djemai et al. studied IoT service layout (Djemai et al. 2019), and proposed a model of infrastructure and IoT application where discrete PSO minimizes energy consumption and application delay. To solve energy consumption in data centers, Abdessamia et al. believed that VM placement plays an important role in ensuring cloud consolidation and reducing energy consumption (Abdessamia et al. 2020), and binary GSA deals with such problem in heterogeneous data centers.

### 4.5.4 Power & location fields

Power optimization plays an important role in ensuring the operation of power system, and it is directly related to the security and economy of the system. With the development of

optimization technology, seeking algorithms with good convergence, strong robustness and intelligent characteristics has become an important research direction in power system optimization, and it has significantly theoretical engineering significance (Li et al. 2013).

Harris hawks optimization (HHO) is a new algorithm proposed in 2019, and Beşkirli and Dağ developed 8 versions of binary HHO for wind turbine micrositeing (Beşkirli and Dağ 2020), as shown in Table 11.

Wave energy is a kind of renewable energy with rapid development and broad prospect. Neshat et al. maximized the total utilized power of a wide wave field composed of three fully submerged wave energy converters (WECs) (Neshat et al. 2020). Due to the large computational cost and high dimensionality search space of hydrodynamic interactions among WECs, they adopt a hybrid multi-strategy evolution framework that combines swarm initialization, binary evolutionary algorithm, discrete local search and continuous global optimization to solve such problems. Hassan et al. used binary PSO and shuffled frog leap algorithm (SLFA) to detect the optimal position and size of distribution powers (Hassan et al. 2020a). The algorithm significantly reduces power loss and improves voltage stability. Ledezma et al. brought a hybrid algorithm based on PSO and quadratic programming (QP) to solve multi-stage transmission expansion planning (Ledezma and Alcaraz 2020). The model considers transmission loss and safety criteria where PSO is used for investment and QP solves operating cost. Jalali et al. (2016) studied the optimal planning of radial distribution system, including the sizes of wires, the location of distributed power, and the locations and sizes of shunt capacitors. Jalali et al. proposed a binary PSO method to plan distribution network. The algorithm is able to solve continuous and binary variables, and it minimizes the cost of the system under inflation rate, power and energy.

In the location of battery exchange station, Zhang et al. proposed a location-routing algorithm under stochastic demands, and the proposed algorithm combines PSO and variable neighborhood search to minimize the number of battery exchange stations and the route between users and stations (Zhang et al. 2019b). Mouhrim et al. studied the location of wireless charging infrastructure in a transmission network composed of multiple routes (Mouhrim et al. 2019). A nonlinear integer programming solution is proposed and solved

**Table 11** The transfer functions of binary HHO

Name	Transfer function
T1	$T(x) = \text{mod}(\text{floor}(x), 2)$
T2	$T(x) = \text{mod}(\text{round}(\text{mod}(x, 2)), 2)$
T3	$T(x) = \text{mod}(\text{ceil}(x), 2)$
T4	$T(x) = \begin{cases} \text{mod}(\text{ceil}(x), 2) & \text{if}(\text{rand} < 0.5) \\ \text{mod}(\text{round}(x), 2) & \text{else} \end{cases}$
T5	$T(x) = \begin{cases} \text{mod}(\text{ceil}(x), 2) & \text{if}(\text{rand} < 0.5) \\ \text{mod}(\text{floor}(x), 2) & \text{else} \end{cases}$
T6	$T(x) = \begin{cases} \text{mod}(\text{round}(x), 2) & \text{if}(\text{rand} < 0.5) \\ \text{mod}(\text{floor}(x), 2) & \text{else} \end{cases}$
T7	$T(X) = \frac{1}{e^{-10(x-0.5)}}$
T8	$T(x) = \frac{e^{2x} - 1}{e^{2x} + 1}$



by multi-objective binary PSO. The algorithm maintains the quality of vehicle route while achieving a compromise between the costs of batteries and installing power transmitter. Phuangpornpitak and Tia suggested a new BPSO for optimizing the placement of photo-voltaic (PV) units on radius power distribution system (Phuangpornpitak and Tia 2016). The algorithm converges quickly and explores solution space in different directions avoiding local trap in optimization process. Sahoo et al. developed a multi-objective planning algorithm for electrical distribution system based on PSO where it optimizes the numbers and locations of feeders, section switches, and tie lines (Sahoo et al. 2012). Objective functions consist of minimizing total installation and operating costs and maximizing network reliability, and they are realized by SPEA2.

Mohammadi et al. proposed a multi-objective PSO algorithm for making earthquake response plans which contain pre- and post-disaster decisions (Mohammadi et al. 2016). Tri-objectives are maximizing total expected demand coverage, minimizing total expected cost and minimizing the satisfaction difference of nodes. A genotype-phenotype PSO algorithm handles binary and continuous variables, and a new adaptive inertia weight and two mutation operators are adopted to ensure diversity and balance exploration and exploitation abilities.

Location problem is a very important optimization topic in modern logistics, especially in the current rapid development of mobile Internet and e-commerce, and there is a strong demand for the location optimization of distribution center. Distribution center location refers to the planning process of choosing a specified number of addresses in economic area with demand points, and it is a very complex decision-making optimization activity. Logistics network includes warehouses, suppliers and receivers. Jacyna-GolDa and Izdebski used GA to solve the multi-criteria optimization of warehouse location in logistics network under the constraints of the production capacity of suppliers and the storage capacity of receivers (Jacyna-GolDa and Izdebski 2017). Supply chain network design (SCND) is a complex constrained issue which performs a significant role in enterprise management. Zhang et al. extended it to a large-scale uncertainty SCND which is difficult for traditional methods to obtain feasible solutions in limited time (Zhang et al. 2019b). A co-operative co-evolutionary bare bone PSO with function independent decomposition is proposed and two repair strategies adjust infeasible solutions that often appear in the model. Mogale et al. discussed the three-stage food distribution of India's Public Distribution System (PDS) which consists of purchasing centers, farmers, base silos and field silos (Mogale et al. 2018). A hybrid model of PSO and chemical reaction optimization (CRO) plans the transportation and storage of grain with the goals of minimizing grain transportation, inventory holding and operating costs, and meets the constraints of seasonal procurement, demand satisfaction, silo capacity and vehicle capacity.

#### 4.5.5 Planning field

Binary metaheuristic algorithms solve layout problems in engineering plannings such as decoupling capacitors location (Lee et al. 2021), gate matrix layout (de Oliveira and Lorena 2002), web service location-allocation (Tan et al. 2017), water distribution system (Zheng et al. 2014), oil well drilling (Guria et al. 2014), 3D rock slope excavation (Wang et al. 2018) and hospital (Ali et al. 2021).

Lee et al. developed a new model to reduce conductive emissions in a automatic emergency braking system where X/Y decoupling capacitors suppress switching noises and binary PSO decides the most effective positions of decoupling capacitors to minimize

the number of X/Y in the braking system (Lee et al. 2021). Compared with traditional GA, constructive genetic algorithm (CGA) has many features such as dynamic population and using other heuristics in optimization. Alexandre and Lorena described the application of CGA to gate matrix layout problem (GMLP) which occurs commonly in large-scale integrated designs (de Oliveira and Lorena 2002). It is converted to allocating a set of circuit nodes with the best order, and layout area is minimizing the number of the tracks required to cover gates interconnection.

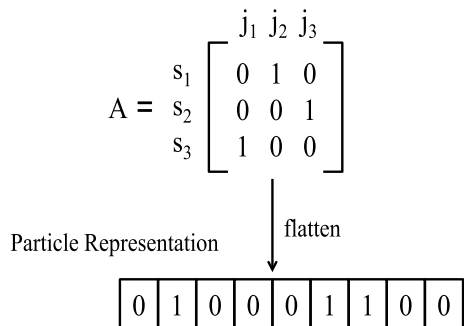
Network latency is one of the main issues of web service, therefore, the service should consider its physical and user’s positions. Tan et al. suggested an improved binary PSO algorithm which uses adaptive inertia technology to assign web service locations (Tan et al. 2017). Figure 6 presents its binary encoding, and  $A_s^j$  indicates whether service  $s$  is allocated at position  $j$ .

Zheng et al. adopted a coupled binary linear programming (BLP)-DE algorithm to optimize water distribution system (WDS) design (Zheng et al. 2014). Firstly, graph algorithm decomposes WDS into several trees and a core, and then binary linear programming optimizes the trees. Finally, DE is utilized to optimize the core with obtained optimal trees to generate the approximate optimal solution of WD. The algorithm takes advantage of the benefits of BLP and DE where BLP efficiently provides a global optimal solution of the trees and DE yields the high-quality solutions for the core. Guria et al. used a binary coded elitist GA for optimizing oil well drilling, and the main optimizations are to maximize drilling depth and minimize drilling time and cost (Guria et al. 2014). For wedge failure during rock slope excavation, Wang et al. proposed a binary PSO to optimize the shear strength of 3D rock (Wang et al. 2018). Monte Carlo calculates the failure probabilities of rock slopes under different excavation surfaces, and the reliability of the algorithm is validated in a project of Chongqing.

Hassan et al. proposed the application of suitable location model for field hospitals during the COVID-19 pandemic (Ali et al. 2021). The used model is the most appropriate among three common location models utilized to solve healthcare (set covering model, maximal covering model and P-median model). DBGSK algorithm is adopted to solve the optimum location of facilities in hospital.

In sum, we list the optimization algorithms discussed and their applications, as shown in Table 12.

Fig. 6 Encoding scheme example



## 4.6 Parameter optimization problem

The solving knowledge of NN is represented through connection weights among neurons, and NN has the characteristics of parallel processing, self-learning, and approaching any nonlinear function with arbitrary precision.

However, there are still several problems in the applications of NN such as the local minimum of network learning, slow convergence rate, complex network structure design and weak generalization performance, and metaheuristic algorithms optimize the parameters of NN to overcome such problems. Jimenez et al. discussed a parameter calibration method for random discontinuous network based on GA (Jimenez and Jurado-Pina 2012). They present the examples used in original Poisson discontinuous network parameters which are known in advance to verify the proposed method, and the reasoning ability of the model is evaluated with back-calculated parameters and various objective functions with different crossover and mutation probabilities. Inputset is a key step to successfully predict data-driven traffic. Taormina and Chau proposed a new input variable selection model (Taormina and Chau 2015), and selected inputset and ELM specifications are encoded as binary particles which are evolved by single- and multi-objective optimizations. The control strategies of charging and discharging have practical significance for electric vehicles participating in peak shaving. Considering household microgrid price and electric vehicles, Zhang et al. established a two-stage optimization model and used an improved binary PSO to optimize the parameters of the model (Zhang et al. 2018). Vuolio et al. built a multi-variable parameterized prediction model for molten iron desulfurization (Vuolio et al. 2019). The model is identified by LOOCV and binary coded GA, and has the characteristics of automatic recognition, reliability and economy.

The hyperparameters of NN, such as the numbers of neurons and hidden layers and the settings of convolutional pool, need to be defined in advance, and they determine the performance of NN. Users try to do various attempts to obtain satisfactory results, and recently, scholars have begun to use metaheuristic algorithms to optimize NN to automatically complete model evolution (Liu et al. 2020; Taormina et al. 2015; Yu et al. 2018). Joshi et al. adopted disruption-based SSA and CSO to optimize the structure of convolutional neural network (CNN) and used it for identifying and classifying peripheral blood cell images (Joshi et al. 2020). The proposed method overcomes hyperparameters' shortcomings in CNN and also assists the model in processing small datasets. A binary coded technique is employed to transform hyperparameters tuning into an optimization, and the algorithm increases search space by High classification accuracy. NNs have achieved success in image classification, face recognition, audio recognition and pattern detection, etc. However, their design costs are High and they need expert knowledge in related fields. Ahmad et al. proposed a swarm intelligence algorithm to search for new architectures without manual intervention (Ahmad et al. 2020). Firstly, CSA is combined with binary network representation, and hamming distance-based similarity replaces original distance metric to make it compatible with neural structure. Secondly, the adjustment parameters of CSA are reduced through dynamic flight length distribution algorithm. Thirdly, random selection is replaced with tournament selection method. The model develops a automated system and realizes classification with various data. Zhang et al. proposed a two-stage approach to improve the structure and weights of NN (Zhang et al. 2019a). Firstly, a collaborative binary-real DE optimizes network structure and connection weights. Secondly, parameters are fine-tuning by levenberg-marquardt (LM) backpropagation algorithm. The

**Table 12** The details of the cited references in layout optimization

Ref.	Optimization algorithm	Application	Convergence	Complexity	Scalability
Eiroyby et al. (2019)	Binary TLBOA	PMU	Fast	High	High
Abd Rahman and Zobiaa (2017)	Binary PSO	PMU	Medium	Low	High
Maji and Acharjee (2017)	Binary PSO	PMU	Fast	Medium	High
Mishra et al. (2016a)	Binary PSO	PMU	Low	Low	High
Maji and Acharjee (2018)	Binary CSA	PMU	Low	Medium	High
Singh et al. (2021)	GA & Binary ACO & Lion Optimization	Coverage in WSN	Fast	High	High
Swayamsiddha et al. (2019)	Binary BA	Cellular Mobility Management	Medium	Medium	High
Niknamfar et al. (2017)	MO BBO	Hub Location in WSN	Fast	Medium	High
Ma et al. (2020)	Binary PSO	Anchor Deployment	Medium	Low	High
Xiu-Wu et al. (2020)	WPA	Clustering Routing	Medium	Medium	Low
Sindhuja and Shankar (2020)	Binary CSA	5G	Fast	High	High
Wang et al. (2011)	Binary PSO	Node Placement in IWSN	Fast	Medium	High
Moreno et al. (2015)	BPSO	WLAN	Medium	Low	High
Zhu et al. (2018)	Binary PSO	Allocation in Fog Computing	Medium	Low	High
Mishra et al. (2018)	PSO & Binary PSO & BA	Service Allocation in Fog Computing	Medium	Low	High
Djemai et al. (2019)	Discrete PSO	IoT Services Placement	Medium	Low	High
Abdessamia et al. (2020)	Binary GSA	VM Placement	Medium	Medium	High
Li et al. (2013)	Multi-Objective DE	Power Infrastructure	Medium	Medium	High
Beşkirlil and Dag (2020)	HOGO	Wind Turbine Micrositing	Medium	Medium	High
Neshat et al. (2020)	GA & Binary DE & Binary PSO	WEC	Fast	High	Low
Hassan et al. (2020a)	Binary PSO & SFLA	Distributed Generation	Fast	High	High
Ledezma and Alcauz (2020)	PSO	Transmission Expansion	Fast	High	High
Jalali et al. (2016)	Binary PSO	Distributed Generation	Medium	Low	High

**Table 12** (continued)

Ref.	Optimization algorithm	Application	Convergence	Complexity	Scalability
Zhang et al. (2019b)	Binary PSO	Location-Routing in Electric Vehicle Transportation	Fast	High	Low
Mouhri et al. (2019)	Multi-Objective Binary PSO	Wireless Charging for Electric Vehicles	Low	Low	High
Phuangpompitak and Tia (2016)	Binary PSO	PV	Fast	Medium	High
Sahoo et al. (2012)	SPEA2 & MOPSO	Distribution System	Fast	High	High
Mohammadi et al. (2016)	PSO	Distribution Task	Low	Low	High
Jacyna-GolDa and Izdebski (2017)	GA	Warehouse Location	Low	Low	High
Zhang et al. (2019b)	PSO	Supply Chain Network	Medium	Low	High
Mogale et al. (2018)	CRO	Distribution Task	Medium	Medium	Low
Lee et al. (2021)	BPSO	Decoupling Capacitors Location	Medium	Low	High
de Oliveira and Lorena (2002)	CGA	Gate Matrix Layout	Medium	Medium	High
Tan et al. (2017)	Binary PSO	Web Service Location-Allocation	Medium	Medium	High
Zheng et al. (2014)	DE	Water Distribution System	Fast	High	Low
Guria et al. (2014)	MOGA	Oil Well Drilling	Low	Low	Low
Wang et al. (2018)	BPSO	3D Rock Slope Excavation	Medium	Low	Low
Ali et al. (2021)	DBGSK	Hospital	Medium	Medium	Low

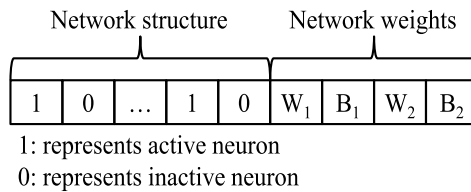
method quickly generates compact NNs with exceptional generalization ability at low computational cost (Fig. 7).

CNNs have been proven in solving complex image classification, but the design of their architecture is challenging. Li et al. used quantum-based PSO to evolve CNN’s architecture and overcome the disadvantages of traditional PSO (Li et al. 2019). As shown in Fig. 8, each particle has a fixed-length binary string to present the configuration of CNN, including its ID and parameters as shown in Table 13. The same mutation probability is shared in different bits, so ID is placed in the first  $m$  bytes without losing generality. All the parameters of this layer are placed in the last  $n$  bytes, thereby the length of each binary string is  $m+n$ .

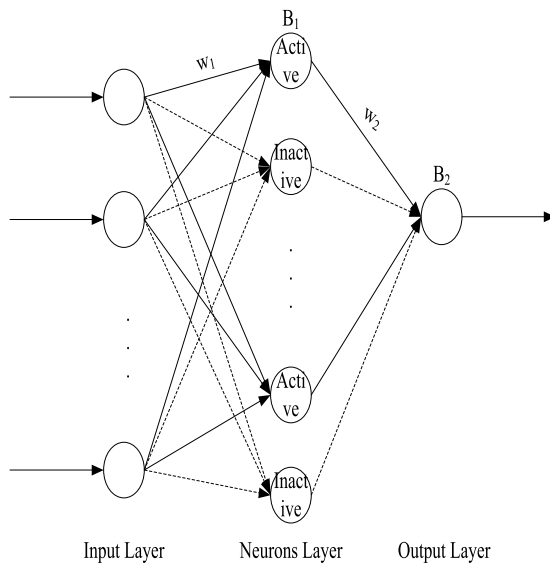
Sadiq et al. introduced an efficient hybrid algorithm of binary PSO and BBO to solve the high computational cost of soft set reduction (Sadiq et al. 2020). The algorithm yields precise decisions for optimal and suboptimal selections.

In short, we list the optimization algorithms discussed and their applications, as shown in Table 14.

**Fig. 7** The mixed-coding individual represents the ANN



**(a)** Mixed-coding scheme.



**(b)** The configurations of three-layer feedforward ANN.

**Fig. 8** A fixed-length binary string of BQPSO individual

<i>ID</i>	<i>Parameter 1</i>	<i>Parameter 2</i>	...
-----------	--------------------	--------------------	-----

#### 4.7 Other problems

Aiming at the problems of maximum independent set, maximum clique, set cover, set partition and set packing, Guturu and Dantu proposed a unified EA (Guturu and Dantu 2008). In the proposed method, they map these troubles to maximum clique problem (MCP), and then use an evolutionary strategy to solve it, improving the performance of exploring the largest clique in EAs. Set covering problem (SCP) finds a subset of decision variables to satisfy minimum cost, and Crawford et al. proposed an improved binary monkey search algorithm (MSA) to handle SCP (Crawford et al. 2020). The algorithm uses new climbing process to improve exploration ability and novel cooperative evolution to decrease the number of infeasible solutions. Jaszkievicz compared the computing efficiency of three state-of-the-art multi-objective metaheuristic algorithms on SCP (Jaszkievicz 2003), and computational effort is compared in achieving the same solution quality through the average of scalarizing functions on representative samples. Kılıç and Yüzgeç proposed an antlion optimization (ALO) algorithm for quadratic assignment based on contest selection (Kılıç and Yüzgeç 2019). In the random walking of ALO, tournament selection strategy is introduced to replace roulette method, and several equations in ALO are modified.

Minimum labeling spanning tree (MLST) is an NP-hard problem and it is commonly applied in communication networks and data compression. To solve this problem, Lin et al. introduced a binary FA which repairs infeasible solutions and eliminates redundant tags (Lin et al. 2020), and the algorithm is more suitable for discrete optimization. Vehicular ad hoc networks (VANETs) need strong paths connecting all nodes to achieve reliable and efficient information transmission, but classic graph theory only obtains one minimum spanning tree (MST). Zhang and Zhang proposed a binary coded ABC algorithm to solve the construction of spanning tree, and applied the algorithm to roadside-vehicle communication (Zhang and Zhang 2017). Da et al. proposed an improved maximum vertex cover algorithm to meet the strict time complexity constraint of mixed integer linear program, and multi-start local branch handles it by combining the proposed algorithm with local search (Da Silva et al. 2019).

Comments from various fields are increasingly published on the Internet, and analyzing these contents will help stakeholders make decisions. Text summarization technology generates concise summaries consisting of sentiments that are useful for analysis. Priya and Umamaheswari proposed two multi-objective optimization techniques based on PSO (Priya and Umamaheswari 2019). Mojrián and Seyed brought a new multi-document text summarization method which adopts salient sentences from source documents to generate summaries (Mojrián and Mirroshandel 2021). The proposed general summarizer describes text summarization as binary optimization, and solutions are acquired by QIGA. With the rapid growth of Internet and e-government, automatic multi-document summarization has attracted people's attention. Alguliev et al. modeled multi-document summarization as a binary difference where objective function is a weighted combination of redundancy objective and content coverage (Alguliev et al. 2012). Debnath et al. used an improved multi-objective CSO approach to extract automatic text summarization (Debnath et al. 2021). In the work, the population represents feasible solutions and the constraint is summary length. Objective functions are composed of "coverage rate and informativeness" and

**Table 13** The parameters of different types of CNN layers

Convolutional layer				
ID	Filter size	# of feature maps	Stride size	Summary
Range	0 or 7	[1,8]	[1,4]	
# of bits	3	7	2	15
Example	0(000) 2(001)	32 (000 111)	2(01)	000001000111101
Pooling layer				
ID	Kernel size	Stride size	Type	Summary
Range	1 or 6	[1,4]	[1,2]	
# of bits	3	2	1	8
Example	1(001) 2(01)	2 (01)	2(1)	00101011XXXXXXX
Fully-connected layer				
ID	Kernel size	Kernel size	Summary	
Range	2 or 5	[1,2048]		
# of bits	3	11	14	
Example	2(010)	1024(0111111111)	00101111111111X	
Disabled layer				
ID	Summary			
Range	3 or 4			
# of bits	3	3		
Example	3(011)	011XXXXXXXXXXXXXXXX		



**Table 14** The details of the cited references in parameter optimization

Ref.	Optimization algorithm	Application	Convergence	Complexity	Scalability
Jimenez and Jurado-Pina (2012)	GA	Parameter Calibration	Low	Low	Low
Taormina and Chau (2015)	Binary PSO	Input Variable Selection in ELM	Medium	High	Low
Zhang et al. (2018)	Binary PSO	Parameter Optimization in Electric Vehicles	Medium	Low	High
Vuolio et al. (2019)	GA	Variable Selection in Hot Metal Desulfurization Kinetics	Low	Low	Low
Liu et al. (2020)	Binary GWO	ESN	Low	High	Low
Taormina et al. (2015)	Binary PSO	Parameter Optimization in ELM	Medium	High	Low
Yu et al. (2018)	Binary CSO	Parameter Optimization in MRE Isolator	Low	High	Low
Joshi et al. (2020)	CSO & Salp Swarm Algorithm	CNN	Medium	High	Low
Ahmad et al. (2020)	Binary CSA	CNN	Low	High	Low
Zhang et al. (2019a)	DE & Binary DE	NN	Medium	High	Low
Li et al. (2019)	PSO	CNN	Medium	High	Low
Sadiq et al. (2020)	Binary PSO & BBO	Set Ret Reduction	Fast	High	Low

“anti-redundancy”, and optimal solution is selected from nondominated solutions according to ROUGE score.

Software testing is the key to ensuring high-quality products, but test suites are large to fully meet software testing requirements. Since the suites usually contain redundancy, i.e., two or more test cases (TCs) cover the same requirement/code segment. De et al. modeled TCs selection as an optimization task based on constrained search, and objective function is maximizing demand coverage under the constraint of execution effort (De Souza et al. 2013). A modified binary PSO solves the problem and two hybrid algorithms are integrated into PSO to improve local search ability. Resources and time are commonly ignored in software development, but they become main constraints in software testing. The selection of TCs is critical for reducing time complexity, therefore, Geetha and Jeya Mala proposed a new multi-objective BA algorithm (Geetha and Jeya Mala 2021). It has two goals, code coverage and object-oriented, and has fast convergence.

Edge detection is widely used in computer vision applications and it is a challenging and time-consuming task. In (Dagar and Dahiya 2020), Dagar and Dahiya suggested an edge detection technique based on multi-objective binary PSO. The proposed method is tested on 500 BSD images, and it is compared with edge detection technologies such as Prewitt, Canny, ACO and GA. Pellot et al. introduced a method for the 3D reconstruction of vessel lumen from two angiographic images (Pellot et al. 1994). The cross-section of each vessel is denoted by a binary string, and SA optimizes the cross-section. The proposed method does successfully on both single and branch vessels, and has inherent ambiguity when viewed under oblique angles. For single vessels and bifurcations, it presents the results of the independent reconstruction of 2D slice and the 3D reconstruction of spatially continuous 2D slices. The irrelevant tasks and redundant channels used in brain-computer interface (BCI) may lead to low classification accuracy, high computational complexity and application inconvenience. Shi et al. brought a new binary harmony search (HS) method to select the best channels and improve the performance of BCI (Shi et al. 2021). EEG signals are collected by the sensors placed in the different positions of human head, and have great potential in biometric systems due to their natural robustness and uniqueness. Rodrigues et al. reduced the number of sensors and maintained comparable performance (Rodrigues et al. 2016). They evaluate binary flower pollination algorithm (FPA) with different transfer functions and optimum-path forest classifier to maximize the accuracy of selected channels.

From household appliances to satellites, embedded system has become an indispensable part of people’s lives. JPEG encoder, an embedded system, is used to obtain high-quality output from digital images. Nath and Datta recommended a multi-objective binary coded GA that uses JPEG encoder to optimize software and hardware components in embedded process (Nath and Datta 2014). High-efficiency itemset mining (HUIM) reveals profitable products through both quantity and profit factors. Lin et al. claimed an efficient HUIM search algorithm with PSO (Lin et al. 2017). The designed algorithm is based on transaction weighted utility model to deeply reduce combinational problem in optimization process, and OR/NOR tree structure is advanced to reduce the discovery of the invalid combinations of HUI.

Lot sizing finds optimal order to minimize the holding and ordering costs of product portfolio, and it becomes an NP-hard problem considering multi-items at multi-levels with capacity constraints. Mishra et al. successfully developed an improved binary PSO technology to solve lot sizing problem with large capacitated multi-level multi-item (Mishra et al. 2016b). Binary PSO deals with the problem in reasonable time, and improved local search mechanism advances the solutions acquired by binary PSO.

Hassan et al. proposed stochastic travelling advisor problem (STAP) in network optimization (Hassan et al. 2020b), and it is defined for an advisory group who chooses a subset of candidate workplaces comprising the most profitable route within the time limit of day working hours. STAP is a typical binary optimization which has a stochastic nature in travelling and advising time, and binary GSK solves it. A travelling disinfection-man problem (TDP) is presented in Hassan et al. (2021b) which optimizes the scheduling for the disinfection process of COVID-19. TDP is similar to travelling salesman problem (TSP), but it is likely to select a route to reach a subset of the predetermined places to be disinfected with the most utilization of available day working hours. DBGSK is used to deal with TDP, improving the scheduling of coronavirus disinfection process for five contaminated faculties in Ain Shams University in Cairo.

In general, we list the optimization algorithms discussed and their applications, as shown in Table 15.

#### 4.8 Taxonomy and survey

Through investigation, it is found that binary metaheuristic algorithms are widely used in engineering optimizations. Transfer function is main binary strategy, and Sigmoid function is commonly adopted. Binary PSO and NSGA-II are two popular optimization algorithms which deal with the single- and multi-objective problems of feature selection, scheduling, layout and engineering structure optimization.

For the convenience of research, we summarize the datasets commonly used in the applications of binary metaheuristic algorithms, as shown in Table 16. In feature selection, UCI is the most often utilized dataset, and NSL-KDD is employed to compare the performance of algorithms in intrusion detection. IEEE unit test systems and IEEE bus systems are frequently adopted in the fields of electric power and energy, while DUC mostly appears in text summarization.

### 5 Future research prospects

Based on the development and current research status of binary metaheuristic algorithms, following interests are presented.

#### 1. Binary algorithm

To apply continuous metaheuristic algorithms to binary applications, it is necessary to use various methods to map the positions of agents to  $\{0, 1\}$  space. Since these algorithms are not initially designed to solve binary problems, the performance of converted binary algorithms is limited. To improve solution ability, it is necessary to specially construct algorithms suitable for binary optimizations. Although several ideas have been put forward, they have not yet received widespread attention. In addition, for metaheuristic algorithms, it is essential to design special improvement strategies for particular binary applications. For example, when PSO solves feature selection, the algorithm is limited by binary position, and its velocity is different from that of continuous PSO. We may propose improved method suitable for feature selection according to the characteristics of binary PSO and data structure.

**Table 15** The details of the cited references

Ref.	Optimization algorithm	Application	Convergence	Complexity	Scalability
Guturu and Dantu (2008)	TS	Clique Finding	Low	Medium	High
Crawford et al. (2020)	Binary MSA	Set Covering	Medium	High	High
Kılıç and Yüzgeç (2019)	ALO	Quadratic Assignment	Medium	Medium	High
Lin et al. (2020)	Binary FA	MLST	Medium	Medium	High
Zhang and Zhang (2017)	Binary ABC	Vehicular AD Hoc Networks	High	Medium	High
Da Silva et al. (2019)	MSLB	MLST	Fast	High	Low
Priya and Umamaheswari (2019)	Multi-Objective PSO	Text Summarization	Low	Low	High
Jaszkiewicz (2003)	GA & SPEA & MA	Set Covering	Low	Medium	Medium
Mojriani and Mirroshandel (2021)	QIGA	Text Summarization	Medium	Medium	High
Debnath et al. (2021)	Multi-Objective CSO	Text Summarization	Medium	Medium	High
Alguliev et al. (2012)	Binary DE	Text Summarization	Medium	Medium	High
De Souza et al. (2013)	Binary PSO	Text Summarization	Medium	Medium	High
Geetha and Jeya Mala (2021)	Multi-Objective BA	Software Testing	Medium	Low	High
Dagar and Dahiya (2020)	Multi-Objective Binary PSO	Software Testing	Low	Low	Medium
Pellot et al. (1994)	SA	Edge Detection	Low	Low	High
Shi et al. (2021)	Binary HS	3D Reconstruction	Low	Medium	Low
Rodrigues et al. (2016)	Binary FPA	BCI	Low	Medium	High
Nath and Datta (2014)	Multi-Objective GA	EEG	Fast	Medium	High
Lin et al. (2017)	PSO	JPEG	Low	Low	Medium
Mishra et al. (2016b)	Binary PSO	HUIM	Medium	Low	Medium
Hassan et al. (2020b)	Binary GSK	Lot Sizing	Fast	Medium	High
Hassan et al. (2021b)	DBGSK	STAP	Medium	Medium	Low
		TDP	Medium	Medium	Low

**Table 16** Commonly utilized datasets

Application	Dataset	Ref.
Feature Selection	UCI	Kumar and Bharti (2021) Faris et al. (2018b) Abdel-Basset et al. (2020) Aljarah et al. (2018) Arora and Anand (2019) Dhiman et al. (2021) Mafarja et al. (2018) Mafarja et al. (2019) Mafarja et al. (2020) Song et al. (2020) Agrawal et al. (2021a) Xue et al. (2020) Hancer et al. (2018) Zhang et al. (2020) Hancer (2020) Xu et al. (2020) Zhang et al. (2014) Bhattacharya et al. (2019) Anter and Ali (2020) Chen et al. (2019)
Facial Emotion Recognition	MMI	Mistry et al. (2016) Hassan and Mohammed (2020) Mlakar et al. (2017)
Hyperspectral Imagery	Indian Pines Data	Ghamisi et al. (2014) Zhang et al. (2007) Rashno et al. (2017)
Gene Classification	Leukemia Colon Lymphoma Brain cancer SRBCT Lung	Han et al. (2017) Xiong et al. (2019) Alshamlan (2018) Pashaei et al. (2019) Tran et al. (2018) Wang et al. (2020b)
Intrusion Detection	NSL-KDD	Wazirali (2021) Raman et al. (2017) Maza and Touahria (2019) Zhu et al. (2017) Zhang and Xie (2020)
UC	IEEE unit test	Panwar et al. (2018) Hemparuva et al. (2018) Yang et al. (2017) Yang et al. (2019)
Transmission Line Optimization	IEEE bus systems	Nojavan et al. (2018) Milani and Haghifam (2013) Nojavan et al. (2018) Milani and Haghifam (2013)
Polarity Optimization	MCNC benchmark	He et al. (2017) Zhang et al. (2011)
PMU	IEEE bus systems	Maji and Acharjee (2018) Mishra et al. (2016a) Maji and Acharjee (2017) Elroby et al. (2019) Abd Rahman and Zobaa (2017)

**Table 16** (continued)

Application	Dataset	Ref.
Text Summarization	DUC	Mojriani and Mirroshandel (2021) Debnath et al. (2021) Alguliev et al. (2012)

Although there has been some theoretical research on binary algorithms, progress is slow. To provide a theoretical basis for solving problems and improvement approaches, it is necessary to increase relevant theoretical analysis. For example, we adopt the latest study on continuous algorithms, Monte Carlo chain and quadratic programming to prove the convergence ability of binary algorithms.

## 2. Transfer function

Transfer function plays an important role in converting from continuous metaheuristic algorithms to binary versions, and currently used transfer functions are mainly S-shaped and V-shaped. Mathematical functions are further studied and new methods are proposed to improve the solution ability of algorithms. Transfer functions have different performance in binary algorithms, and for specific problem and metaheuristic algorithm, proper transfer function is elaborately designed.

## 3. Benchmark functions

Scholars have proposed a large number of benchmark functions on continuous algorithms such as the CEC series test functions. However, binary metaheuristic algorithms are limited by position space and they have poor performance in these functions. At present, there is a little research on the benchmark functions of binary algorithms. In future works, more binary benchmark functions are proposed to facilitate the comparison of algorithms.

## 4. Large-scale binary problems

With the development of information technology and the advancement of data collection technology, people have to deal with complex troubles. Although the execution efficiency of metaheuristic algorithms is higher than traditional algorithms, it still consumes a lot of time. Surrogate-assisted techniques are believed to solve such problems, and various models are proposed such as Kriging, radial basis function neural network (RBFNN), polynomial regression, etc (Shinde et al. 2020; Winter et al. 2021; Pan et al. 2021b; Ren et al. 2021). The space of these surrogate models is constructed based on real values, but it is a challenging proposing surrogate models suitable for binary problems.

## 5. Applications

Metaheuristic algorithms have made progress in the fields of transportation, WSN and energy, but they lack integration abilities. In engineering applications, binary and

continuous problems often accompany each other, and in future research, hybrid coding or ensemble approaches are needed to solve complex combinatorial optimizations. In the field of intelligent transportation, algorithms mostly optimize partial problems. It is a future research direction to integrate traffic signal optimization, vehicle path planning, traffic flow prediction, shared carpooling, vehicle control and other issues through intelligent algorithms to reduce traffic congestion and improve driving safety and pedestrian comfort. Metaheuristic algorithms globally optimize the network coverage, cluster routing algorithm, nodes deployment, hubs layout, task allocation, base stations deployment and resource allocation of WSNs, thereby reducing resources and energy consumption and improving system utilization. Intelligent algorithms optimize household energy management, power generation/consumption forecasting, power dispatching, distribution network selection, charging and discharging, and power distribution systems to improve energy utilization.

## 6 Conclusion

Metaheuristic algorithms quickly seek acceptable solutions under the constraints of space and time, and they have gained a lot of attentions. Engineering applications contain binary optimization issues which need to be solved through their binary versions. This article comprehensively introduces binary metaheuristic algorithms in engineering fields, and covers all commonly utilized algorithms and applications. It focuses on binarization schemes, theoretical researches, benchmark functions and engineering problems, and also discusses challenges. According to different applications, algorithms are presented from knapsack, feature selection, scheduling, structure optimization, layout and parameter optimization, etc. We list related issues through optimization algorithm, application, convergence, complexity and scalability, and also provide detailed explanations of reviewed works for easy understanding. In addition, we summarize frequently utilized transfer functions, public datasets, applications, and characteristics to facilitate scholars to conduct research.

Although binary metaheuristic algorithms have achieved successes, their potential has not yet been fully tapped. It is a challenging task to design a new binary algorithm and theoretically prove it. Surrogate for large-scale global optimization has inspired further research on binary problems, but it is a prospective work to develop promising surrogate models. To improve solution ability, it is necessary to research specialized algorithms and binary coded strategies according to practical applications. Many optimizations are related such as energy dispatch, power generation layout, power forecasting, home appliances control etc and how to integrate them is a topic that needs to be investigated in future.

**Acknowledgements** This work is supported by the National Natural Science Foundation of China (61872085).

## References

Abd Rahman NH, Zobaa AF (2017) Integrated mutation strategy with modified binary PSO algorithm for optimal PMUs placement. *IEEE Trans Ind Inform* 13(6):3124–3133

- Abdel-Basset M, El-Shahat D, El-henawy I et al (2020) A new fusion of grey wolf optimizer algorithm with a two-phase mutation for feature selection. *Expert Syst Appl* 139(112):824
- Abdessamia F, Zhang WZ, Tian YC (2020) Energy-efficiency virtual machine placement based on binary gravitational search algorithm. *Clust Comput* 23(3):1577–1588
- Agrawal R, Kaur B, Sharma S (2020) Quantum based whale optimization algorithm for wrapper feature selection. *Appl Soft Comput* 89(106):092
- Abdolrasol MG, Mohamed R, Hannan M et al (2021) Artificial neural network based particle swarm optimization for microgrid optimal energy scheduling. *IEEE Trans Power Electron* 36:12,151–12,157
- Agrawal P, Ganesh T, Mohamed AW (2021a) Chaotic gaining sharing knowledge-based optimization algorithm: an improved metaheuristic algorithm for feature selection. *Soft Comput* 25(14):9505–9528
- Agrawal P, Ganesh T, Mohamed AW (2021b) A novel binary gaining-sharing knowledge-based optimization algorithm for feature selection. *Neural Comput Appl* 33(11):5989–6008
- Agrawal P, Ganesh T, Mohamed AW (2022a) Solving knapsack problems using a binary gaining sharing knowledge-based optimization algorithm. *Complex Intell Syst* 8(1):43–63
- Agrawal P, Ganesh T, Oliva D et al (2022b) S-shaped and v-shaped gaining-sharing knowledge-based algorithm for feature selection. *Appl Intell* 52(1):81–112
- Ahmad M, Abdullah M, Moon H et al (2020) Image classification based on automatic neural architecture search using binary crow search algorithm. *IEEE Access* 8:189,891–189,912
- Ahmadieh Khanezar M, Bansal R, Martínez-Arellano G et al (2020) XOR binary gravitational search algorithm with repository: industry 4.0 applications. *Appl Sci* 10(18):6451
- Ahmed S, Ghosh KK, Mirjalili S et al (2021) AIEOU: automata-based improved equilibrium optimizer with u-shaped transfer function for feature selection. *Knowl-Based Syst* 228(107):283
- Aldhafeeri A, Rahmat-Samii Y (2019) Brain storm optimization for electromagnetic applications: continuous and discrete. *IEEE Trans Antennas Propag* 67(4):2710–2722
- Alguliev RM, Aliguliyev RM, Hajrahimova MS (2012) GenDocSum+ MCLR: generic document summarization based on maximum coverage and less redundancy. *Expert Syst Appl* 39(16):12,460–12,473
- Ali S, Hassan A, Khalid A et al (2021) Optimum location of field hospitals for covid-19: a nonlinear binary metaheuristic algorithm. *Comput Mater Contin* 68:1183–1202
- Aljarah I, Mafarja M, Heidari AA et al (2018) Asynchronous accelerating multi-leader salp chains for feature selection. *Appl Soft Comput* 71:964–979
- Alshamlan HM (2018) Co-ABC: correlation artificial bee colony algorithm for biomarker gene discovery using gene expression profile. *Saudi J Biol Sci* 25(5):895–903
- Anter AM, Ali M (2020) Feature selection strategy based on hybrid crow search optimization algorithm integrated with chaos theory and fuzzy c-means algorithm for medical diagnosis problems. *Soft Comput* 24(3):1565–1584
- Armaghani DJ, Harandizadeh H, Momeni E et al (2021) An optimized system of GMDH-ANFIS predictive model by ICA for estimating pile bearing capacity. *Artif Intell Rev* 55:2313–2350
- Arora S, Anand P (2019) Binary butterfly optimization approaches for feature selection. *Expert Syst Appl* 116:147–160
- Aslan M, Gunduz M, Kiran MS (2019) Jayax: Jaya algorithm with xor operator for binary optimization. *Appl Soft Comput* 82(105):576
- Ayub S, Ayob SM, Tan CW et al (2020) Optimal residence energy management with time and device-based preferences using an enhanced binary grey wolf optimization algorithm. *Sustain Energy Technol Assess* 41(100):798
- Baig MZ, Aslam N, Shum HP et al (2017) Differential evolution algorithm as a tool for optimal feature subset selection in motor imagery EEG. *Expert Syst Appl* 90:184–195
- Bandyopadhyay R, Basu A, Cuevas E et al (2021) Harris hawks optimisation with simulated annealing as a deep feature selection method for screening of Covid-19 CT-scans. *Appl Soft Comput* 111(107):698
- Bansal JC, Deep K (2012) A modified binary particle swarm optimization for knapsack problems. *Appl Math Comput* 218(22):11,042–11,061
- Baraldi P, Cannarile F, Di Maio F et al (2016) Hierarchical k-nearest neighbours classification and binary differential evolution for fault diagnostics of automotive bearings operating under variable conditions. *Eng Appl Artif Intell* 56:1–13
- Baraldi P, Bonfanti G, Zio E (2018) Differential evolution-based multi-objective optimization for the definition of a health indicator for fault diagnostics and prognostics. *Mech Syst Signal Process* 102:382–400
- Baykasoğlu A, Ozsoydan FB (2018) Dynamic optimization in binary search spaces via weighted superposition attraction algorithm. *Expert Syst Appl* 96:157–174
- Beheshti Z (2021) UTF: upgrade transfer function for binary meta-heuristic algorithms. *Appl Soft Comput* 106(107):346



- Beşkirli A, Dağ İ (2020) A new binary variant with transfer functions of Harris hawks optimization for binary wind turbine micrositeing. *Energy Rep* 6:668–673
- Bhattacharya A, Goswami RT, Mukherjee K (2019) A feature selection technique based on rough set and improvised PSO algorithm (PSORS-FS) for permission based detection of android malwares. *Int J Mach Learn Cybern* 10(7):1893–1907
- Campagner A, Ciucci D, Hüllermeier E (2021) Rough set-based feature selection for weakly labeled data. *Int J Approx Reason* 136:150–167
- Canayaz M (2021) MU-COVIDNet: diagnosis of Covid-19 using deep neural networks and meta-heuristic-based feature selection on x-ray images. *Biomed Signal Process Control* 64(102):257
- Chai QW, Chu SC, Pan JS et al (2020) Applying adaptive and self assessment fish migration optimization on localization of wireless sensor network on 3-D Terrain. *J Inf Hiding Multim Signal Process* 11(2):90–102
- Chakravarty S, Mitra R, Williams NR (2002) Application of a microgenetic algorithm (MGA) to the design of broadband microwave absorbers using multiple frequency selective surface screens buried in dielectrics. *IEEE Trans Antennas Propag* 50(3):284–296
- Chantar H, Mafarja M, Alsawalqah H et al (2020) Feature selection using binary grey wolf optimizer with elite-based crossover for arabic text classification. *Neural Comput Appl* 32(16):12,201–12,220
- Chaturvedi I, Cambria E, Cavallari S, et al (2020) Genetic programming for domain adaptation in product reviews. In: 2020 IEEE congress on evolutionary computation (CEC), IEEE, pp 1–8
- Sy Chen, Xf Shui, Huang H (2017) Improved genetic algorithm with two-level approximation using shape sensitivities for truss layout optimization. *Struct Multidiscip Optim* 55(4):1365–1382
- Chen Y, Xie W, Zou X (2015) A binary differential evolution algorithm learning from explored solutions. *Neurocomputing* 149:1038–1047
- Chen Y, Wang Y, Cao L et al (2019) CCFS: a confidence-based cost-effective feature selection scheme for healthcare data classification. *IEEE/ACM Trans Comput Biol Bioinform* 18(3):902–911
- Choo H, Ling H, Liang CS (2003) Shape optimization of corrugated coatings under grazing incidence using a genetic algorithm. *IEEE Trans Antennas Propag* 51(11):3080–3087
- Choo H, Rogers RL, Ling H (2005) Design of electrically small wire antennas using a pareto genetic algorithm. *IEEE Trans Antennas Propag* 53(3):1038–1046
- Chuang LY, Yang CH, Tsai JH et al (2013) Operon prediction using chaos embedded particle swarm optimization. *IEEE/ACM Trans Comput Biol Bioinform* 10(5):1299–1309
- Contaldi C, Vafaei F, Nelson PC (2019) Bayesian network hybrid learning using an elite-guided genetic algorithm. *Artif Intell Rev* 52(1):245–272
- Crawford B, Soto R, Olivares R et al (2020) A binary monkey search algorithm variation for solving the set covering problem. *Nat Comput* 19(4):825–841
- Cruz RM, Sabourin R, Cavalcanti GD (2017) Meta-des. oracle: meta-learning and feature selection for dynamic ensemble selection. *Inf Fusion* 38:84–103
- Da Silva TG, Queiroga E, Ochi LS et al (2019) A hybrid metaheuristic for the minimum labeling spanning tree problem. *Eur J Oper Res* 274(1):22–34
- Dagar NS, Dahiya PK (2020) Edge detection technique using binary particle swarm optimization. *Procedia Comput Sci* 167:1421–1436
- Das SK, Mohanty R, Mohanty M et al (2020) Multi-objective feature selection (MOFS) algorithms for prediction of liquefaction susceptibility of soil based on in situ test methods. *Nat Hazards* 103:2371–2393
- de Oliveira ACM, Lorena LAN (2002) A constructive genetic algorithm for gate matrix layout problems. *IEEE Trans Comput-Aided Des Integr Circuits Syst* 21(8):969–974
- De Souza LS, Prudêncio RB, Barros FdA et al (2013) Search based constrained test case selection using execution effort. *Expert Syst Appl* 40(12):4887–4896
- Debnath D, Das R, Pakray P (2021) Extractive single document summarization using multi-objective modified cat swarm optimization approach: ESDS-MCSO. *Neural Comput Appl*. <https://doi.org/10.1007/s00521-021-06337-4>
- Dhiman G, Oliva D, Kaur A et al (2021) BEPO: a novel binary emperor penguin optimizer for automatic feature selection. *Knowl-Based Syst* 211(106):560
- Di Cesare N, Chamoret D, Domaszewski M (2016) Optimum topological design of negative permeability dielectric metamaterial using a new binary particle swarm algorithm. *Adv Eng Softw* 101:149–159
- Di Maio F, Baronchelli S, Vagnoli M et al (2017) Determination of prime implicants by differential evolution for the dynamic reliability analysis of non-coherent nuclear systems. *Ann Nucl Energy* 102:91–105

- Djemai T, Stolf P, Monteil T, et al (2019) A discrete particle swarm optimization approach for energy-efficient iot services placement over fog infrastructures. In: 2019 18th international symposium on parallel and distributed computing (ISPDC), IEEE, pp 32–40
- Doerr B, Zheng W (2020) Working principles of binary differential evolution. *Theor Comput Sci* 801:110–142
- Dong J, Li Q, Deng L (2017) Design of fragment-type antenna structure using an improved BPSO. *IEEE Trans Antennas Propag* 66(2):564–571
- Du J, Zhao L, Chu X et al (2018) Enabling low-latency applications in LTE-a based mixed fog/cloud computing systems. *IEEE Trans Veh Technol* 68(2):1757–1771
- Elroby M, Mekhamer S, Talaat H et al (2019) Optimal placement of phasor measurement units considering islanding contingency, communication infrastructure, and quality of service. *Heliyon* 5(10):e02,538
- Elsied M, Ouakour A, Gualous H et al (2016) Optimal economic and environment operation of micro-grid power systems. *Energy Convers Manage* 122:182–194
- Emary E, Zawbaa HM, Hassanien AE (2016) Binary grey wolf optimization approaches for feature selection. *Neurocomputing* 172:371–381
- Eseye AT, Lehtonen M (2020) Short-term forecasting of heat demand of buildings for efficient and optimal energy management based on integrated machine learning models. *IEEE Trans Ind Inform* 16(12):7743–7755
- Faisal M, Hannan M, Ker PJ et al (2020) Particle swarm optimised fuzzy controller for charging-discharging and scheduling of battery energy storage system in mg applications. *Energy Rep* 6:215–228
- Fang Y, Pedroni N, Zio E (2015) Optimization of cascade-resilient electrical infrastructures and its validation by power flow modeling. *Risk Anal* 35(4):594–607
- Faris H, Hassonah MA, Ala'M AZ et al (2018a) A multi-verse optimizer approach for feature selection and optimizing SVM parameters based on a robust system architecture. *Neural Comput Appl* 30(8):2355–2369
- Faris H, Mafarja MM, Heidari AA et al (2018b) An efficient binary salp swarm algorithm with crossover scheme for feature selection problems. *Knowl-Based Syst* 154:43–67
- Fu H, Ouyang D, Xu J (2011) A self-adaptive differential evolution algorithm for binary CSPs. *Comput Math Appl* 62(7):2712–2718
- Gao H, Pun CM, Kwong S (2016) An efficient image segmentation method based on a hybrid particle swarm algorithm with learning strategy. *Inf Sci* 369:500–521
- Gauthama Raman M, Somu N, Jagarapu S et al (2020) An efficient intrusion detection technique based on support vector machine and improved binary gravitational search algorithm. *Artif Intell Rev* 53(5):3255–3286
- Geetha B, Jeya Mala D (2021) A multi objective binary bat approach for testcase selection in object oriented testing. *J Ambient Intell Humaniz Comput* 12(7):6997–7006
- Ghamisi P, Couceiro MS, Benediktsson JA (2014) A novel feature selection approach based on FODPSO and SVM. *IEEE Trans Geosci Remote Sens* 53(5):2935–2947
- Glover F, Kochenberger G, Xie W et al (2019) Diversification methods for zero-one optimization. *J Heuristics* 25(4):643–671
- Gortazar F, Duarte A, Laguna M et al (2010) Black box scatter search for general classes of binary optimization problems. *Comput Oper Res* 37(11):1977–1986
- Gu X, Li Y, Jia J (2015) Feature selection for transient stability assessment based on kernelized fuzzy rough sets and memetic algorithm. *Int J Electr Power Energy Syst* 64:664–670
- Guo S, Wang J, Guo M (2020) Z-shaped transfer functions for binary particle swarm optimization algorithm. *Comput Intell Neurosci*. <https://doi.org/10.1155/2020/6502807>
- Guo W, Li J, Chen G et al (2014) A PSO-optimized real-time fault-tolerant task allocation algorithm in wireless sensor networks. *IEEE Trans Parallel Distrib Syst* 26(12):3236–3249
- Guo Y, Wei L, Xu X (2020) A sonar image segmentation algorithm based on quantum-inspired particle swarm optimization and fuzzy clustering. *Neural Comput Appl* 32(22):16,775–16,782
- Gupta D, Rodrigues JJ, Sundaram S et al (2020a) Usability feature extraction using modified crow search algorithm: a novel approach. *Neural Comput Appl* 32(15):10,915–10,925
- Gupta N, Khosravy M, Patel N et al (2020b) Mendelian evolutionary theory optimization algorithm. *Soft Comput* 24(19):14345–14390
- Guria C, Goli KK, Pathak AK (2014) Multi-objective optimization of oil well drilling using elitist non-dominated sorting genetic algorithm. *Pet Sci* 11(1):97–110
- Guturu P, Dantu R (2008) An impatient evolutionary algorithm with probabilistic Tabu search for unified solution of some np-hard problems in graph and set theory via clique finding. *IEEE Trans Syst Man Cybern B* 38(3):645–666

- Han F, Yang C, Wu YQ et al (2017) A gene selection method for microarray data based on binary PSO encoding gene-to-class sensitivity information. *IEEE/ACM Trans Comput Biol Bioinform* 14(1):85–96
- Han KH, Kim JH (2002) Quantum-inspired evolutionary algorithm for a class of combinatorial optimization. *IEEE Trans Evol Comput* 6(6):580–593
- Han L, Shi X, Wang T (2020) Bayesian network model test configuration method based on genetic and binary discrete particle swarm combination algorithm. *J Phys: Conf Ser* 1642:012007
- Hancer E (2020) A new multi-objective differential evolution approach for simultaneous clustering and feature selection. *Eng Appl Artif Intell* 87(103):307
- Hancer E, Xue B, Zhang M et al (2018) Pareto front feature selection based on artificial bee colony optimization. *Inf Sci* 422:462–479
- Hassan AK, Mohammed SN (2020) A novel facial emotion recognition scheme based on graph mining. *Defence Technol* 16(5):1062–1072
- Hassan AS, Sun Y, Wang Z (2020a) Multi-objective for optimal placement and sizing dg units in reducing loss of power and enhancing voltage profile using bps-sifa. *Energy Rep* 6:1581–1589
- Hassan SA, Ayman YM, Alnowibet K et al (2020b) Stochastic travelling advisor problem simulation with a case study: a novel binary gaining-sharing knowledge-based optimization algorithm. *Complexity*. <https://doi.org/10.1155/2020/6692978>
- Hassan SA, Agrawal P, Ganesh T et al (2021a) Scheduling shuttle ambulance vehicles for covid-19 quarantine cases, a multi-objective multiple 0–1 knapsack model with a novel discrete binary gaining-sharing knowledge-based optimization algorithm. *Data science for COVID-19*. Elsevier, Amsterdam, pp 675–698
- Hassan SA, Agrawal P, Ganesh T et al (2021b) A travelling disinfection-man problem (TDP) for covid-19: a nonlinear binary constrained gaining-sharing knowledge-based optimization algorithm. *Intelligent data analysis for COVID-19 pandemic*. Springer, Singapore, pp 291–318
- Hatta N, Zain AM, Sallehuddin R et al (2019) Recent studies on optimisation method of grey wolf optimiser (GWO): a review (2014–2017). *Artif Intell Rev* 52(4):2651–2683
- He Z, Qin G, Xiao L et al (2017) An efficient polarity optimization approach for fixed polarity reed-muller logic circuits based on novel binary differential evolution algorithm. *IFIP international conference on network and parallel computing*. Springer, Cham, pp 118–121
- He Z, Zhou J, Sun N et al (2019) Integrated scheduling of hydro, thermal and wind power with spinning reserve. *Energy Procedia* 158:6302–6308
- Hemparuva RJC, Simon SP, Kinattungal S et al (2018) Geographic information system and weather based dynamic line rating for generation scheduling. *Eng Sci Technol Int J* 21(4):564–573
- Hossain MA, Pota HR, Squartini S et al (2019) Energy scheduling of community microgrid with battery cost using particle swarm optimisation. *Appl Energy* 254(113):723
- Hu Z, Chiong R, Pranata I, et al (2016) Identifying malicious web domains using machine learning techniques with online credibility and performance data. In: 2016 IEEE congress on evolutionary computation (CEC), IEEE, pp 5186–5194
- Hu P, Pan JS, Chu SC (2022) Advanced quasi-affine transformation evolutionary (quatre) algorithm and its application for neural network. *Advances in smart vehicular technology, transportation, communication and applications*. Springer, Singapore, pp 157–165
- Huang M, Xu C, Cheng L (2016) Density functional theory studies of the binary systems [bxal13-x]-(x=0–13). *Acta Chim Sin* 74(9):758–763
- Huang C, Zhu J, Liang Y et al (2019) An efficient automatic multiple objectives optimization feature selection strategy for internet text classification. *Int J Mach Learn Cybern* 10(5):1151–1163
- Jacyna-GolDa I, Izdebski M (2017) The multi-criteria decision support in choosing the efficient location of warehouses in the logistic network. *Procedia Eng* 187:635–640
- Jain R, Joseph T, Saxena A et al (2021) Feature selection algorithm for usability engineering: a nature inspired approach. *Complex Intell Syst*. <https://doi.org/10.1007/s40747-021-00384-z>
- Jalali A, Mohammadi S, Sangrody H, et al (2016) DG-embedded radial distribution system planning using binary-selective PSO. In: 2016 IEEE innovative smart grid technologies-Asia (ISGT-Asia), IEEE, pp 996–1001
- Jaszkievicz A (2003) Do multiple-objective metaheuristics deliver on their promises? A computational experiment on the set-covering problem. *IEEE Trans Evol Comput* 7(2):133–143
- Ji B, Yuan X, Yuan Y (2018) A hybrid intelligent approach for co-scheduling of cascaded locks with multiple chambers. *IEEE Trans Cybern* 49(4):1236–1248
- Jimenez R, Jurado-Pina R (2012) A simple genetic algorithm for calibration of stochastic rock discontinuity networks. *Rock Mech Rock Eng* 45(4):461–473

- Jiménez F, Sánchez G, García JM et al (2017) Multi-objective evolutionary feature selection for online sales forecasting. *Neurocomputing* 234:75–92
- Jiménez F, Pérez-Sánchez H, Palma J et al (2019) A methodology for evaluating multi-objective evolutionary feature selection for classification in the context of virtual screening. *Soft Comput* 23(18):8775–8800
- Jin N, Rahmat-Samii Y (2010) Hybrid real-binary particle swarm optimization (HPSO) in engineering electromagnetics. *IEEE Trans Antennas Propag* 58(12):3786–3794
- Joshi S, Kumar R, Dwivedi A (2020) Hybrid DSSCS and convolutional neural network for peripheral blood cell recognition system. *IET Image Process* 14(17):4450–4460
- Kampouridis M, Otero FE (2017) Heuristic procedures for improving the predictability of a genetic programming financial forecasting algorithm. *Soft Comput* 21(2):295–310
- Kanna SR, Udaiyakumar K, Kumar SD, et al (2018) 3D heterogeneous bin packing framework for multi-constrained problems using hybrid genetic approach. In: *IOP Conference series: materials science and engineering*, IOP Publishing, p 012203
- Kanwal S, Rashid J, Nisar MW, et al (2021) An effective classification algorithm for heart disease prediction with genetic algorithm for feature selection. In: 2021 Mohammad Ali Jinnah University international conference on computing (MAJICC), IEEE, pp 1–6
- Karagoz GN, Yazici A, Dokeroglu T et al (2021) A new framework of multi-objective evolutionary algorithms for feature selection and multi-label classification of video data. *Int J Mach Learn Cybern* 12(1):53–71
- Karbassi Yazdi A, Kaviani MA, Emrouznejad A et al (2020) A binary particle swarm optimization algorithm for ship routing and scheduling of liquefied natural gas transportation. *Transp Lett* 12(4):223–232
- Karthiga R, Mangai S (2019) Feature selection using multi-objective modified genetic algorithm in multimodal biometric system. *J Med Syst* 43(7):1–11
- Khan A, Javaid N, Ahmad A et al (2019) A priority-induced demand side management system to mitigate rebound peaks using multiple knapsack. *J Ambient Intell Humaniz Comput* 10(4):1655–1678
- Kılıç H, Yüzgeç U (2019) Tournament selection based antlion optimization algorithm for solving quadratic assignment problem. *Eng Sci Technol* 22(2):673–691
- Kiran MS, Gündüz M (2013) XOR-based artificial bee colony algorithm for binary optimization. *Turk J Electr Eng Comput Sci* 21(Sup. 2):2307–2328
- Kozdoi N, Lessmann S, Papakonstantinou K et al (2019) A multi-objective approach for profit-driven feature selection in credit scoring. *Decis Support Syst* 120:106–117
- Kumar L, Bharti KK (2021) A novel hybrid BPSO-SCA approach for feature selection. *Nat Comput* 20(1):39–61
- Kuo HF et al (2016) Ant colony optimization-based freeform sources for enhancing nanolithographic imaging performance. *IEEE Trans Nanotechnol* 15(4):599–606
- Laabadi S, Naimi M, El Amri H et al (2020) A binary crow search algorithm for solving two-dimensional bin packing problem with fixed orientation. *Procedia Comput Sci* 167:809–818
- Labani M, Moradi P, Jalili M (2020) A multi-objective genetic algorithm for text feature selection using the relative discriminative criterion. *Expert Syst Appl* 149(113):276
- Ledezma LFF, Alcaraz GG (2020) Hybrid binary PSO for transmission expansion planning considering n-1 security criterion. *IEEE Latin Am Trans* 18(03):545–553
- Lee J, Lee H, Nah W (2021) Minimizing the number of x/y capacitors in an autonomous emergency brake system using BPSO algorithm. *IEEE Trans Power Electron* 37:1630–1640
- Leonard BJ, Engelbrecht AP, Cleghorn CW (2015) Critical considerations on angle modulated particle swarm optimisers. *Swarm Intell* 9(4):291–314
- Li X, Yin M (2013) Multiobjective binary biogeography based optimization for feature selection using gene expression data. *IEEE Trans NanoBiosci* 12(4):343–353
- Li YF, Sansavini G, Zio E (2013) Non-dominated sorting binary differential evolution for the multi-objective optimization of cascading failures protection in complex networks. *Reliab Eng Syst Saf* 111:195–205
- Li P, Xu D, Zhou Z et al (2016) Stochastic optimal operation of microgrid based on chaotic binary particle swarm optimization. *IEEE Trans Smart Grid* 7(1):66–73
- Li J, Wang H, Wang X et al (2018) Optimized sleep strategy based on clustering in dense heterogeneous networks. *EURASIP J Wirel Commun Netw* 2018(1):1–10
- Li Y, Xiao J, Chen Y et al (2019) Evolving deep convolutional neural networks by quantum behaved particle swarm optimization with binary encoding for image classification. *Neurocomputing* 362:156–165
- Li Z, Tang L, Liu J (2020) A memetic algorithm based on probability learning for solving the multidimensional knapsack problem. *IEEE Trans Cybern*. <https://doi.org/10.1109/TCYB.2020.3002495>

- Lima HC, Otero FE, Merschmann LH et al (2021) A novel hybrid feature selection algorithm for hierarchical classification. *IEEE Access* 9:127,278–127,292
- Lin JCW, Yang L, Fournier-Viger P et al (2017) A binary PSO approach to mine high-utility itemsets. *Soft Comput* 21(17):5103–5121
- Lin M, Liu F, Zhao H et al (2020) A novel binary firefly algorithm for the minimum labeling spanning tree problem. *Comput Model Eng Sci* 125(1):197–214
- Liu J, Mei Y, Li X (2015) An analysis of the inertia weight parameter for binary particle swarm optimization. *IEEE Trans Evolut Comput* 20(5):666–681
- Liu K, Feng L, Dai P et al (2017) Coding-assisted broadcast scheduling via memetic computing in SDN-based vehicular networks. *IEEE Trans Intell Transp Syst* 19(8):2420–2431
- Liu J, Sun T, Luo Y et al (2020) Echo state network optimization using binary grey wolf algorithm. *Neurocomputing* 385:310–318
- Long Z, Zhang J, Gao Q et al (2020) Novel double compensation for impedance-frequency characteristics of rotary ultrasonic machining via multiobjective genetic algorithm. *IEEE Trans Autom Sci Eng* 18(4):1928–1938
- Luh GC, Lin CY, Lin YS (2011) A binary particle swarm optimization for continuum structural topology optimization. *Appl Soft Comput* 11(2):2833–2844
- Ma H, Simon D, Fei M (2014) On the convergence of biogeography-based optimization for binary problems. *Math Probl Eng*. <https://doi.org/10.1155/2014/147457>
- Ma Z, Liu F, Qiao H et al (2020) Joint optimization of anchor deployment and power allocation in wireless network localization. *IEEE Commun Lett* 24(5):1086–1089
- Mafarja M, Aljarah I, Heidari AA et al (2018) Binary dragonfly optimization for feature selection using time-varying transfer functions. *Knowl-Based Syst* 161:185–204
- Mafarja M, Aljarah I, Faris H et al (2019) Binary grasshopper optimisation algorithm approaches for feature selection problems. *Expert Syst Appl* 117:267–286
- Mafarja M, Qasem A, Heidari AA et al (2020) Efficient hybrid nature-inspired binary optimizers for feature selection. *Cognit Comput* 12(1):150–175
- Maisto D, Esposito M (2012) Improving accuracy and interpretability of clinical decision support systems through possibilistic constrained evolutionary optimization. In: 2012 eighth international conference on signal image technology and internet based systems, IEEE, pp 474–481
- Maji TK, Acharjee P (2017) Multiple solutions of optimal PMU placement using exponential binary PSO algorithm for smart grid applications. *IEEE Trans Ind Appl* 53(3):2550–2559
- Maji TK, Acharjee P (2018) A stage-wise optimal PMU allocation using BCSA for improving the sensitive bus observability. *Procedia Comput Sci* 143:702–711
- Mak JC, Sideris C, Jeong J et al (2016) Binary particle swarm optimized 2×2 power splitters in a standard foundry silicon photonic platform. *Opt Lett* 41(16):3868–3871
- Mandanans FD, Kotropoulos CL (2020) Subspace learning and feature selection via orthogonal mapping. *IEEE Trans Signal Process* 68:1034–1047
- Manohar L, Ganesan K (2018) Diagnosis of schizophrenia disorder in MR brain images using multi-objective BPSO based feature selection with fuzzy SVM. *J Med Biol Eng* 38(6):917–932
- Maza S, Touahria M (2019) Feature selection for intrusion detection using new multi-objective estimation of distribution algorithms. *Appl Intell* 49(12):4237–4257
- Mellal MA, Williams EJ (2020) Cuckoo optimization algorithm with penalty function and binary approach for combined heat and power economic dispatch problem. *Energy Rep* 6:2720–2723
- Menéndez HD, Otero FE, Camacho D (2016) Medoid-based clustering using ant colony optimization. *Swarm Intell* 10(2):123–145
- Meraihi Y, Acheli D, Ramdane-Cherif A (2019) QoS multicast routing for wireless mesh network based on a modified binary bat algorithm. *Neural Comput Appl* 31(7):3057–3073
- Michalak K (2018) Low-dimensional Euclidean embedding for visualization of search spaces in combinatorial optimization. *IEEE Trans Evolut Comput* 23(2):232–246
- Milani AE, Haghifam MR (2013) An evolutionary approach for optimal time interval determination in distribution network reconfiguration under variable load. *Math Comput Model* 57(1–2):68–77
- Mirhosseini M, Nezamabadi-pour H (2018) BICA: a binary imperialist competitive algorithm and its application in CBIR systems. *Int J Mach Learn Cybern* 9(12):2043–2057
- Mirjalili S (2016) Dragonfly algorithm: a new meta-heuristic optimization technique for solving single-objective, discrete, and multi-objective problems. *Neural Comput Appl* 27(4):1053–1073
- Mirjalili S, Lewis A (2013) S-shaped versus v-shaped transfer functions for binary particle swarm optimization. *Swarm Evolut Comput* 9:1–14
- Mirjalili S, Mirjalili SM, Yang XS (2014) Binary bat algorithm. *Neural Comput Appl* 25(3):663–681

- Mirjalili S, Zhang H, Mirjalili S et al (2020) A novel u-shaped transfer function for binary particle swarm optimisation. In: 9th international conference on soft computing for problem solving, SocProS 2019. Springer Gabler, Wiesbaden, pp 241–259
- Mishra C, Jones KD, Pal A et al (2016a) Binary particle swarm optimisation-based optimal substation coverage algorithm for phasor measurement unit installations in practical systems. *IET Gener Trans Distrib* 10(2):555–562
- Mishra S, Sahithi V, Rao C (2016b) A hybrid binary particle swarm optimization for large capacitated multi item multi level lot sizing (cmimlls) problem. In: IOP conference series: materials science and engineering, IOP Publishing, p 012040
- Mishra SK, Puthal D, Rodrigues JJ et al (2018) Sustainable service allocation using a metaheuristic technique in a fog server for industrial applications. *IEEE Trans Ind Inform* 14(10):4497–4506
- Mishra D, Panigrahi T, Mohanty A et al (2019) Teaching learning based optimization for frequency regulation in two area thermal-solar hybrid power system. Applications of artificial intelligence techniques in engineering. Springer, Singapore, pp 63–71
- Mistry K, Zhang L, Neoh SC et al (2016) A micro-GA embedded PSO feature selection approach to intelligent facial emotion recognition. *IEEE Trans Cybern* 47(6):1496–1509
- Mlakar U, Fister I, Brest J et al (2017) Multi-objective differential evolution for feature selection in facial expression recognition systems. *Expert Syst Appl* 89:129–137
- Modiri A, Kiasaleh K (2011) Efficient design of microstrip antennas for SDR applications using modified PSO algorithm. *IEEE Trans Magn* 47(5):1278–1281
- Mogale D, Kumar SK, Tiwari MK (2018) An MINLP model to support the movement and storage decisions of the Indian food grain supply chain. *Control Eng Pract* 70:98–113
- Mohammadi R, Ghomi SF, Jolai F (2016) Prepositioning emergency earthquake response supplies: A new multi-objective particle swarm optimization algorithm. *Appl Math Model* 40(9–10):5183–5199
- Mohanty R, Suman S, Das SK (2017) Modelling the pull-out capacity of ground anchors using multi-objective feature selection. *Arab J Sci Eng* 42(3):1231–1241
- Mojriani M, Mirroshandel SA (2021) A novel extractive multi-document text summarization system using quantum-inspired genetic algorithm: MTSQIGA. *Expert Syst Appl* 171(114):555
- Moreno J, Domingo M, Valle L et al (2015) Design of indoor WLANs: combination of a ray-tracing tool with the BPSO method. *IEEE Antennas Propag Mag* 57(6):22–33
- Mouhrim N, Ahmed E, Boukachour J (2019) Pareto efficient allocation of an in-motion wireless charging infrastructure for electric vehicles in a multipath network. *Int J Sustain Transp* 13(6–10):419–432
- Nadimi-Shahraki MH, Taghian S, Mirjalili S et al (2020) MTDE: an effective multi-trial vector-based differential evolution algorithm and its applications for engineering design problems. *Appl Soft Comput* 97(106):761
- Nadimi-Shahraki MH, Banaie-Dezfouli M, Zamani H et al (2021a) B-MFO: a binary moth-flame optimization for feature selection from medical datasets. *Computers* 10(11):136
- Nadimi-Shahraki MH, Fatahi A, Zamani H et al (2021b) Migration-based moth-flame optimization algorithm. *Processes* 9(12):2276
- Nadimi-Shahraki MH, Moeini E, Taghian S et al (2021c) DMFO-CD: a discrete moth-flame optimization algorithm for community detection. *Algorithms* 14(11):314
- Nadimi-Shahraki MH, Taghian S, Mirjalili S (2021d) An improved grey wolf optimizer for solving engineering problems. *Expert Syst Appl* 166(113):917
- Nadimi-Shahraki MH, Taghian S, Mirjalili S et al (2021e) Mtv-mfo: multi-trial vector-based moth-flame optimization algorithm. *Symmetry* 13(12):2388
- Nadimi-Shahraki MH, Taghian S, Mirjalili S et al (2022a) Binary aquila optimizer for selecting effective features from medical data: a covid-19 case study. *Mathematics* 10(11):1929
- Nadimi-Shahraki MH, Taghian S, Mirjalili S et al (2022b) GGWO: gaze cues learning-based grey wolf optimizer and its applications for solving engineering problems. *J Comput Sci* 61(101):636
- Nath PK, Datta D (2014) Multi-objective hardware-software partitioning of embedded systems: a case study of jpeg encoder. *Appl Soft Comput* 15:30–41
- Neri F, Toivanen J, Cascella GL et al (2007) An adaptive multimeme algorithm for designing HIV multi-drug therapies. *IEEE/ACM Trans Comput Biol Bioinform* 4(2):264–278
- Neshat M, Alexander B, Sergiienko NY, et al (2020) Optimisation of large wave farms using a multi-strategy evolutionary framework. In: Proceedings of the 2020 genetic and evolutionary computation conference, pp 1150–1158
- Nguyen BH, Xue B, Andreae P et al (2021) A new binary particle swarm optimization approach: momentum and dynamic balance between exploration and exploitation. *IEEE Trans Cybern* 51(2):589–603

- Ni C, Chen X, Wu F et al (2019) An empirical study on pareto based multi-objective feature selection for software defect prediction. *J Syst Softw* 152:215–238
- Niknamfar AH, Niaki STA, Niaki SAA (2017) Opposition-based learning for competitive hub location: a bi-objective biogeography-based optimization algorithm. *Knowl-Based Syst* 128:1–19
- Niu T, Wang J, Zhang K et al (2018) Multi-step-ahead wind speed forecasting based on optimal feature selection and a modified bat algorithm with the cognition strategy. *Renew Energy* 118:213–229
- Niu W, Feng Z, Li S et al (2021) Short-term electricity load time series prediction by machine learning model via feature selection and parameter optimization using hybrid cooperation search algorithm. *Environ Res Lett* 16(5):055,032
- Nojavan S, Mehdinejad M, Zare K et al (2015) Energy procurement management for electricity retailer using new hybrid approach based on combined BICA-BPSO. *Int J Electr Power Energy Syst* 73:411–419
- Nojavan M, Seyedi H, Mohammadi-Ivatloo B (2018) Voltage stability margin improvement using hybrid non-linear programming and modified binary particle swarm optimisation algorithm considering optimal transmission line switching. *IET Gener Transm Distrib* 12(4):815–823
- Osuna-Enciso V, Cuevas E, Castañeda BM (2022) A diversity metric for population-based metaheuristic algorithms. *Inf Sci* 586:192–208
- Pan JS, Hu P, Chu SC (2021a) Binary fish migration optimization for solving unit commitment. *Energy* 226(120):329
- Pan JS, Liu N, Chu SC et al (2021b) An efficient surrogate-assisted hybrid optimization algorithm for expensive optimization problems. *Inf Sci* 561:304–325
- Pan JS, Tian AQ, Chu SC et al (2021c) Improved binary pigeon-inspired optimization and its application for feature selection. *Appl Intell* 12:8661–8679
- Pan JS, Wang J, Lai J et al (2021d) A modes communication of cat swarm optimization based WSN node location algorithm. *J Internet Technol* 22(5):949–956
- Panwar LK, Reddy S, Verma A et al (2018) Binary grey wolf optimizer for large scale unit commitment problem. *Swarm Evolut Comput* 38:251–266
- Pashaei E, Pashaei E, Aydin N (2019) Gene selection using hybrid binary black hole algorithm and modified binary particle swarm optimization. *Genomics* 111(4):669–686
- Paul S, Das S (2015) Simultaneous feature selection and weighting-an evolutionary multi-objective optimization approach. *Pattern Recognit Lett* 65:51–59
- Pedrasa MAA, Spooner TD, MacGill IF (2009) Scheduling of demand side resources using binary particle swarm optimization. *IEEE Trans Power Syst* 24(3):1173–1181
- Peimankar A, Weddell SJ, Jalal T et al (2017) Evolutionary multi-objective fault diagnosis of power transformers. *Swarm Evolut Comput* 36:62–75
- Pellot C, Herment A, Sigelle M et al (1994) A 3D reconstruction of vascular structures from two x-ray angiograms using an adapted simulated annealing algorithm. *IEEE Trans Med Imaging* 13(1):48–60
- Pereira LA, Papa JP, Coelho AL et al (2019) Automatic identification of epileptic EEG signals through binary magnetic optimization algorithms. *Neural Comput Appl* 31(2):1317–1329
- Pham QV, Mirjalili S, Kumar N et al (2020) Whale optimization algorithm with applications to resource allocation in wireless networks. *IEEE Trans Veh Technol* 69(4):4285–4297
- Phuangpornpitak N, Tia S (2016) Optimal photovoltaic placement by self-organizing hierarchical binary particle swarm optimization in distribution systems. *Energy Procedia* 89:69–77
- Priya V, Umamaheswari K (2019) Enhanced continuous and discrete multi objective particle swarm optimization for text summarization. *Clust Comput* 22(1):229–240
- Rahim S, Javaid N, Ahmad A et al (2016) Exploiting heuristic algorithms to efficiently utilize energy management controllers with renewable energy sources. *Energy Build* 129:452–470
- Raman MG, Somu N, Kirthivasan K et al (2017) An efficient intrusion detection system based on hypergraph-genetic algorithm for parameter optimization and feature selection in support vector machine. *Knowl-Based Syst* 134:1–12
- Ramos CC, Rodrigues D, de Souza AN et al (2016) On the study of commercial losses in brazil: a binary black hole algorithm for theft characterization. *IEEE Trans Smart Grid* 9(2):676–683
- Rashno A, Nazari B, Sadri S et al (2017) Effective pixel classification of mars images based on ant colony optimization feature selection and extreme learning machine. *Neurocomputing* 226:66–79
- Ren Z, Sun C, Tan Y et al (2021) A bi-stage surrogate-assisted hybrid algorithm for expensive optimization problems. *Complex Intell Syst* 7(3):1391–1405
- Richardson J, Adriaenssens S, Bouillard P et al (2012) Multiobjective topology optimization of truss structures with kinematic stability repair. *Struct Multidisc Optim* 46:513–532
- Rizk-Allah RM (2021) A quantum-based sine cosine algorithm for solving general systems of nonlinear equations. *Artif Intell Rev* 54(5):3939–3990



- Rodriguez FJ, Garcia-Martinez C, Lozano M (2012) Hybrid metaheuristics based on evolutionary algorithms and simulated annealing: taxonomy, comparison, and synergy test. *IEEE Trans Evolut Comput* 16(6):787–800
- Rodrigues D, Silva GF, Papa JP et al (2016) EEG-based person identification through binary flower pollination algorithm. *Expert Syst Appl* 62:81–90
- Sadiq AS, Tahir MA, Ahmed AA et al (2020) Normal parameter reduction algorithm in soft set based on hybrid binary particle swarm and biogeography optimizer. *Neural Comput Appl* 32(16):12221–12,239
- Sahoo NC, Ganguly S, Das D (2012) Multi-objective planning of electrical distribution systems incorporating sectionalizing switches and tie-lines using particle swarm optimization. *Swarm Evolut Comput* 3:15–32
- Saremi S, Mirjalili S, Lewis A (2015) How important is a transfer function in discrete heuristic algorithms. *Neural Comput Appl* 26(3):625–640
- Shaban WM, Rabie AH, Saleh AI et al (2021) Accurate detection of covid-19 patients based on distance biased naïve bayes (dbnb) classification strategy. *Pattern Recognit* 119:108110
- Shao ZY, Pan JS, Hu P et al (2021) Equilibrium optimizer of interswarm interactive learning strategy. *Enterp Inf Syst* 10(1080/17517575):1949636
- Shen M, Zhan ZH, Chen WN et al (2014) Bi-velocity discrete particle swarm optimization and its application to multicast routing problem in communication networks. *IEEE Trans Ind Electron* 61(12):7141–7151
- Shi B, Wang Q, Yin S et al (2021) A binary harmony search algorithm as channel selection method for motor imagery-based BCI. *Neurocomputing* 443:12–25
- Shijie Z, Jingjing L, Hongtao W (2014) Genetic algorithm based wireless vibration control of multiple modal for a beam by using photostrictive actuators. *Appl Math Model* 38(2):437–450
- Shinde K, Feissel P, Destercke S (2020) Dealing with high dimensional inconsistent measurements in inverse problems using surrogate modeling: an approach based on sets and intervals. *International conference on uncertainty quantification & optimisation*. Springer, Cham, pp 421–433
- Shu T, Zhang B, Tang Y (2016) Using k-nn with weights to detect diabetes mellitus based on genetic algorithm feature selection. In: 2016 international conference on wavelet analysis and pattern recognition (ICWAPR), IEEE, pp 12–17
- Shukla UP, Nanda SJ (2018) A binary social spider optimization algorithm for unsupervised band selection in compressed hyperspectral images. *Expert Syst Appl* 97:336–356
- Sieber PE, Werner DH (2014) Infrared broadband quarter-wave and half-wave plates synthesized from anisotropic Bézier metasurfaces. *Opt Express* 22(26):32,371–32383
- Sindhuja R, Shankar AR (2020) Effective PAPR reduction in SCFDM-based massive MIMO system using binary crow search algorithm for visible light communication towards 5G networks. *IET Commun* 14(16):2780–2785
- Singh A, Sharma S, Singh J (2021) Nature-inspired algorithms for wireless sensor networks: a comprehensive survey. *Comput Sci Rev* 39(100):342
- Sohrabi MK, Tajik A (2017) Multi-objective feature selection for warfarin dose prediction. *Comput Biol Chem* 69:126–133
- Song XF, Zhang Y, Guo YN et al (2020) Variable-size cooperative coevolutionary particle swarm optimization for feature selection on high-dimensional data. *IEEE Trans Evolut Comput* 24(5):882–895
- Song PC, Chu SC, Pan JS et al (2021) Simplified phasmatodea population evolution algorithm for optimization. *Complex Intell Syst* 8:2749–2767
- Sousa DX, Canuto S, Goncalves MA et al (2019) Risk-sensitive learning to rank with evolutionary multi-objective feature selection. *ACM Trans Inf Syst (TOIS)* 37(2):1–34
- Souza VL, Oliveira AL, Cruz RM, et al (2021) An investigation of feature selection and transfer learning for writer-independent offline handwritten signature verification. In: 2020 25th international conference on pattern recognition (ICPR), IEEE, pp 7478–7485
- Srikanth K, Panwar LK, Panigrahi BK et al (2018) Meta-heuristic framework: quantum inspired binary grey wolf optimizer for unit commitment problem. *Comput Electr Eng* 70:243–260
- Sudholt D, Witt C (2010) Runtime analysis of a binary particle swarm optimizer. *Theor Comput Sci* 411(21):2084–2100
- Swayamsiddha S, Singh SS, Parija S et al (2019) Reporting cell planning-based cellular mobility management using a binary artificial bat algorithm. *Heliyon* 5(3):e01,276
- Tan B, Huang H, Ma H et al (2017) Binary pso for web service location-allocation. *Australasian conference on artificial life and computational intelligence*. Springer, Cham, pp 366–377
- Tan Zf Ju, Lw Li Hh et al (2014) A two-stage scheduling optimization model and solution algorithm for wind power and energy storage system considering uncertainty and demand response. *Int J Electr Power Energy Syst* 63:1057–1069



- Taormina R, Chau KW (2015) Data-driven input variable selection for rainfall-runoff modeling using binary-coded particle swarm optimization and extreme learning machines. *J Hydrol* 529:1617–1632
- Taormina R, Chau KW, Sivakumar B (2015) Neural network river forecasting through baseflow separation and binary-coded swarm optimization. *J Hydrol* 529:1788–1797
- Thiyagarajan D, Shanthi N (2019) A modified multi objective heuristic for effective feature selection in text classification. *Clust Comput* 22(10):1–11
- Tinós R, Yang S (2014) Analysis of fitness landscape modifications in evolutionary dynamic optimization. *Inf Sci* 282:214–236
- Tlili T, Krichen S (2015) On solving the double loading problem using a modified particle swarm optimization. *Theor Comput Sci* 598:118–128
- Torres-Cerna CE, Alanis AY, Poblete-Castro I, et al (2016) A comparative study of differential evolution algorithms for parameter fitting procedures. In: 2016 IEEE congress on evolutionary computation (CEC), IEEE, pp 4662–4666
- Tran B, Xue B, Zhang M (2018) Variable-length particle swarm optimization for feature selection on high-dimensional classification. *IEEE Trans Evolut Comput* 23(3):473–487
- Van M, Kang HJ (2015) Bearing defect classification based on individual wavelet local fisher discriminant analysis with particle swarm optimization. *IEEE Trans Ind Inform* 12(1):124–135
- Vuolio T, Visuri VV, Sorsa A et al (2019) Genetic algorithm-based variable selection in prediction of hot metal desulfurization kinetics. *Steel Res Int* 90(8):1900,090
- Wan L, Sun L, Kong X et al (2019) Task-driven resource assignment in mobile edge computing exploiting evolutionary computation. *IEEE Wirel Commun* 26(6):94–101
- Wang L, Fu X, Fang J, et al (2011) Optimal node placement in industrial wireless sensor networks using adaptive mutation probability binary particle swarm optimization algorithm. In: 2011 seventh international conference on natural computation, IEEE, pp 2199–2203
- Wang G, Sun F, Tang Q (2018) Reliability analysis of rock slope excavation considering the stochasticity and finite persistence of wedges. *Period Polytech Civil Eng* 62(3):660–669
- Wang J, Niu T, Lu H et al (2019a) A novel framework of reservoir computing for deterministic and probabilistic wind power forecasting. *IEEE Trans Sustain Energy* 11(1):337–349
- Wang Y, Yang Z, Mourshed M et al (2019b) Demand side management of plug-in electric vehicles and coordinated unit commitment: a novel parallel competitive swarm optimization method. *Energy Convers Manage* 196:935–949
- Wang F, Pei Z, Dong L et al (2020a) Emergency resource allocation for multi-period post-disaster using multi-objective cellular genetic algorithm. *IEEE Access* 8:82,255–82,265
- Wang Y, Ma Z, Wong KC et al (2020b) Evolving multiobjective cancer subtype diagnosis from cancer gene expression data. *IEEE/ACM Trans Comput Biol Bioinform* 18:2431–2444
- Wang Y, Jiang X, Yan F et al (2021) The GRA-two algorithm for massive-scale feature selection problem in power system scenario classification and prediction. *Energy Rep* 7:293–303
- Wazirali R (2021) Intrusion detection system using fknn and improved PSO. *CMC-Comput Mater Contin* 67(2):1429–1445
- Winter R, Stein B, Bäck T (2021) SAMO-COBRA: a fast surrogate assisted constrained multi-objective optimization algorithm. *International conference on evolutionary multi-criterion optimization*. Springer, Cham, pp 270–282
- Wright J, Jordanov I (2017) Quantum inspired evolutionary algorithms with improved rotation gates for real-coded synthetic and real world optimization problems. *Integr Comput-Aided Eng* 24(3):203–223
- Wu YG, Ho CY, Wang DY (2000) A diploid genetic approach to short-term scheduling of hydro-thermal system. *IEEE Trans Power Syst* 15(4):1268–1274
- Wulandhari LA, Isa SM et al (2019) Optimum nutrition intake from daily dietary recommendation for Indonesian children using binary particle swarm optimization algorithm. *Procedia Comput Sci* 157:16–24
- Xia B, Jeong GG, Koh CS (2015) Co-kriging assisted PSO algorithm and its application to optimal transposition design of power transformer windings for the reduction of circulating current loss. *IEEE Trans Magn* 52(3):1–4
- Xiong Y, Ling QH, Han F et al (2019) An efficient gene selection method for microarray data based on lasso and BPSO. *BMC Bioinform* 20(22):1–13
- Xiu-Wu Y, Hao Y, Yong L et al (2020) A clustering routing algorithm based on wolf pack algorithm for heterogeneous wireless sensor networks. *Comput Netw* 167(106):994
- Xu H, Xue B, Zhang M (2020) A duplication analysis-based evolutionary algorithm for biobjective feature selection. *IEEE Trans Evolut Comput* 25(2):205–218
- Xue Y, Tang T, Pang W et al (2020) Self-adaptive parameter and strategy based particle swarm optimization for large-scale feature selection problems with multiple classifiers. *Appl Soft Comput* 88(106):031

- Yan J, Duan S, Huang T et al (2016) Hybrid feature matrix construction and feature selection optimization-based multi-objective QPSO for electronic nose in wound infection detection. *Sens Rev* 36:23–33
- Yang X, Ning B, Li X et al (2014) A two-objective timetable optimization model in subway systems. *IEEE Trans Intell Transp Syst* 15(5):1913–1921
- Yang Z, Li K, Niu Q et al (2017) A novel parallel-series hybrid meta-heuristic method for solving a hybrid unit commitment problem. *Knowl-Based Syst* 134:13–30
- Yang Z, Li K, Guo Y et al (2019) A binary symmetric based hybrid meta-heuristic method for solving mixed integer unit commitment problem integrating with significant plug-in electric vehicles. *Energy* 170:889–905
- Yu Y, Li Y, Li J et al (2018) Nonlinear characterization of the MRE isolator using binary-coded discrete CSO and ELM. *Int J Struct Stab Dyn* 18(08):1840,007
- Zhai Q, He Y, Wang G et al (2021) A general approach to solving hardware and software partitioning problem based on evolutionary algorithms. *Adv Eng Softw* 159:102998
- Zhang Z, Xie L (2020) A many-objective integrated evolutionary algorithm for feature selection in anomaly detection. *Concurr Comput: Pract Exp* 32(22):e5861
- Zhang X, Zhang X (2017) A binary artificial bee colony algorithm for constructing spanning trees in vehicular ad hoc networks. *Ad Hoc Netw* 58:198–204
- Zhang L, Zhong Y, Huang B et al (2007) Dimensionality reduction based on clonal selection for hyperspectral imagery. *IEEE Trans Geosci Remote Sens* 45(12):4172–4186
- Zhang H, Wang P, GU X (2011) Area optimization of fixed-polarity reed-muller circuits based on niche genetic algorithm. *Chin J Electron* 20(1):27–30
- Zhang Y, Wang S, Phillips P et al (2014) Binary PSO with mutation operator for feature selection using decision tree applied to spam detection. *Knowl-Based Syst* 64:22–31
- Zhang C, Zhou J, Li C et al (2017) A compound structure of elm based on feature selection and parameter optimization using hybrid backtracking search algorithm for wind speed forecasting. *Energy Convers Manage* 143:360–376
- Zhang M, Yang F, Zhang D, et al (2018) Research on charging and discharging control strategy for electric vehicles as distributed energy storage devices. In: IOP conference series: earth and environmental science. IOP Publishing, p 042019
- Zhang L, Li H, Kong XG (2019a) Evolving feedforward artificial neural networks using a two-stage approach. *Neurocomputing* 360:25–36
- Zhang S, Chen M, Zhang W (2019b) A novel location-routing problem in electric vehicle transportation with stochastic demands. *J Clean Prod* 221:567–581
- Zhang X, Du KJ, Zhan ZH et al (2019c) Cooperative coevolutionary bare-bones particle swarm optimization with function independent decomposition for large-scale supply chain network design with uncertainties. *IEEE Trans Cybern* 50(10):4454–4468
- Zhang Y, Dw Gong, Xz Gao et al (2020) Binary differential evolution with self-learning for multi-objective feature selection. *Inf Sci* 507:67–85
- Zhao J, Ye H, Huang K et al (2014) Manipulation of acoustic focusing with an active and configurable planar metasurface transducer. *Sci Rep* 4(1):1–6
- Zhao TF, Chen WN, Liew WC et al (2019) A binary particle swarm optimizer with priority planning and hierarchical learning for networked epidemic control. *IEEE Trans Syst Man Cybern: Syst* 51(8):5090–5104
- Zhao B, Luo F, Lin H et al (2021) Particle swarm optimized neural networks based local tracking control scheme of unknown nonlinear interconnected systems. *Neural Netw* 134:54–63
- Zheng F, Simpson AR, Zecchin AC (2014) Coupled binary linear programming-differential evolution algorithm approach for water distribution system optimization. *J Water Resour Plan Manage* 140(5):585–597
- Zheng W, Peng X, Lu D et al (2017) Composite quantile regression extreme learning machine with feature selection for short-term wind speed forecasting: A new approach. *Energy Convers Manage* 151:737–752
- Zheng W, Gou C, Yan L, et al (2019) Differential-evolution-based generative adversarial networks for edge detection. In: Proceedings of the IEEE/CVF international conference on computer vision workshops, pp 1–10
- Zhou P, Du J, Zhenhua L (2017) Interval analysis based robust truss optimization with continuous and discrete variables using mix-coded genetic algorithm. *Struct Multidiscip Optim* 56(2):353–370
- Zhu Y, Liang J, Chen J et al (2017) An improved NSGA-III algorithm for feature selection used in intrusion detection. *Knowl-Based Systems* 116:74–85
- Zhu C, Tao J, Pastor G et al (2018) FLOO: Latency and quality optimized task allocation in vehicular fog computing. *IEEE Internet Things J* 6(3):4150–4161

- Zio E, Golea LR, Sansavini G (2012) Optimizing protections against cascades in network systems: A modified binary differential evolution algorithm. *Reliab Eng Syst Safety* 103:72–83
- Zou Q, Chen S (2019) Enhancing resilience of interdependent traffic-electric power system. *Reliab Eng Syst Saf* 191(106):557

**Publisher's Note** Springer Nature remains neutral with regard to jurisdictional claims in published maps and institutional affiliations.

Springer Nature or its licensor (e.g. a society or other partner) holds exclusive rights to this article under a publishing agreement with the author(s) or other rightsholder(s); author self-archiving of the accepted manuscript version of this article is solely governed by the terms of such publishing agreement and applicable law.