

Erratum

Erratum to: *In Vitro* Characterization of Bicuspid Aortic Valve Hemodynamics Using Particle Image Velocimetry

NEELAKANTAN SAIKRISHNAN,¹ CHOON-HWAI YAP,¹ NICOLE C. MILLIGAN,¹ NIKOLAY V. VASILYEV,²
 and AJIT P. YOGANATHAN¹

¹Wallace H. Coulter Department of Biomedical Engineering, Georgia Institute of Technology & Emory University, Atlanta, GA, USA; and ²Children’s Hospital Boston, Harvard Medical School, Boston, MA, USA

**Erratum to: Annals of Biomedical Engineering
 DOI 10.1007/s10439-012-0527-2**

This erratum is to correct for a normalization factor that was not applied in the contour plots in Figure 10(b) of the published paper. The viscous shear stress (VSS) values were not normalized by the number of vector fields utilized for ensemble averaging ($N = 50$), hence the correct magnitudes of the VSS for all three valves should be smaller by a factor of 50 than

the images presented in the original manuscript. However, the trends observed from the VSS, which are presented in the Results and Discussion sections of the paper, are not affected due to this error, since results from all three valve models are scaled by the same number of images ($N = 50$).

The corrected version of Fig. 10 is presented here. As such, all other figures in the original manuscript were verified to be correct.

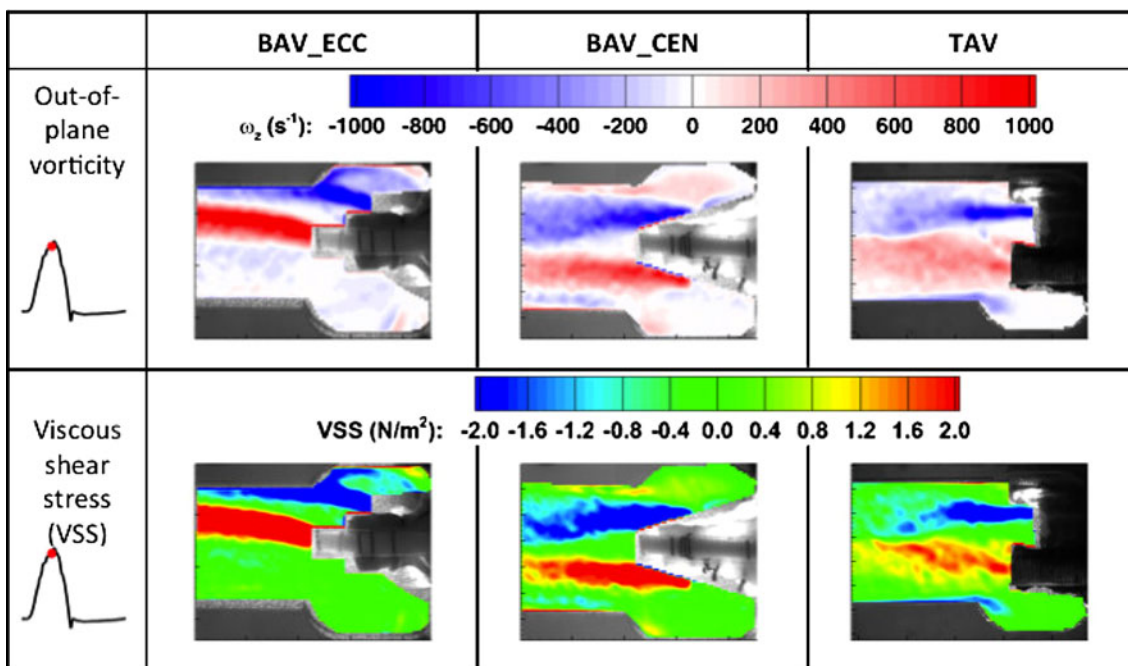


FIGURE 10. (a) Out-of-plane vorticity and (b) VSS for all valve models.

Address correspondence to Ajit P. Yoganathan, Wallace H. Coulter Department of Biomedical Engineering, Georgia Institute of Technology & Emory University, Atlanta, GA, USA. Electronic mail: ajit.yoganathan@bme.gatech.edu

The online version of the original article can be found under doi:[10.1007/s10439-012-0527-2](https://doi.org/10.1007/s10439-012-0527-2).