



## Publisher Correction: Usefulness of ultrasound in diagnosing long head of the biceps tendon malposition in patients with rotator cuff tears

Yoshiko Fujiwara<sup>1</sup> · Syuichi Yamamoto<sup>1</sup> · Yumi Kato<sup>1</sup> · Shimpei Kurata<sup>2</sup> · Shuhei Fujii<sup>2</sup> · Kazuya Inoue<sup>2</sup> · Takashi Inoue<sup>3</sup> · Takamitsu Mondori<sup>2</sup> · Yoshiyuki Nakagawa<sup>2</sup> · Yasuhito Tanaka<sup>4</sup>

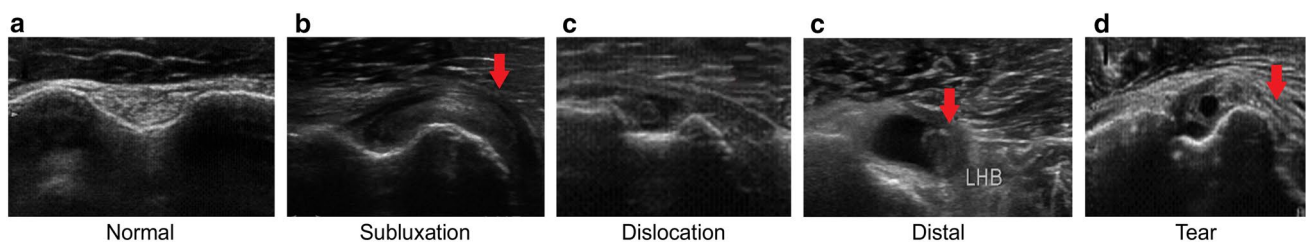
Published online: 15 April 2022

© The Author(s), under exclusive licence to The Japan Society of Ultrasonics in Medicine 2022

**Correction to:** Journal of Medical Ultrasonics  
<https://doi.org/10.1007/s10396-022-01200-y>

The Publisher regrets the following error in Fig. 1 where the label of the figure was published incorrectly. The correct Fig. 1 is given in this correction.

The original article has been corrected.



**Fig. 1** Ultrasonic view of the long head of the biceps tendon (LHBT) with relation to the bicipital groove. **a** Normal anatomy of the LHBT in the bicipital groove, **b** Subluxation of the LHBT (→) over the

lesser tubercle, **c** Dislocation of the LHBT with complete deviation from the bicipital groove distal LHBT (→), **d** Tear (→) of the LHBT

**Publisher's Note** Springer Nature remains neutral with regard to jurisdictional claims in published maps and institutional affiliations.

The original article can be found online at <https://doi.org/10.1007/s10396-022-01200-y>.

✉ Yoshiko Fujiwara  
hjyfp960@yahoo.co.jp

- <sup>1</sup> Department of Clinical Laboratory, Uda City Hospital, 815 Haibarahagihara, Uda, Nara 633-0298, Japan
- <sup>2</sup> Department of Orthopaedic Surgery, Uda City Hospital, 815 Haibarahagihara, Uda, Nara 633-0298, Japan
- <sup>3</sup> Department of Evidence-Based Medicine, Institute for Clinical and Translational Science, Nara Medical University Hospital, 840 Shijo-cho, Kashihara, Nara 634-8522, Japan
- <sup>4</sup> Department of Orthopaedic Surgery, Nara Medical University, 840 Shijo-cho, Kashihara, Nara 634-8522, Japan