




Correction to: The impact of clinical pharmacy services in Nepal in the context of current health policy: a systematic review

Reyaj Mikrani¹ · Muhammad Naveed² · Aman Mikrani³ · Sufia Yasmeen¹ · MD. Akabar⁴ · Zhou Xiaohui^{1,5,6} 

Published online: 22 May 2019

© Springer-Verlag GmbH Germany, part of Springer Nature 2019

Correction to: J Public Health (Berl.): From Theory to Practice
<https://doi.org/10.1007/s10389-019-01042-y>

The Fig. 1 was incompletely filled. The correction and corresponding data are shown below.

Addition to Fig. 1 “Records identified through database searching”: **Cochrane library (n = 6).**

Publisher’s note Springer Nature remains neutral with regard to jurisdictional claims in published maps and institutional affiliations.

The online version of the original article can be found at <https://doi.org/10.1007/s10389-019-01042-y>

✉ Zhou Xiaohui
zhxh@cpu.edu.cn

¹ Department of Clinical Pharmacy, School of Basic Medicine and Clinical Pharmacy, China Pharmaceutical University, #639 Longmian Avenue, Jiangning District, Nanjing 211198, People’s Republic of China

² Department of Clinical Pharmacology, School of Pharmacy, Nanjing Medical University, #101 Longmian Avenue, Jiangning District, Nanjing 211166, People’s Republic of China

³ Department of Finance, College of Economics and Management, Nanjing University of Aeronautics and Astronautics, #29 Jiangjun Avenue, Jiangning District, Nanjing 211100, People’s Republic of China

⁴ Department of Pharmaceutics, School of Pharmacy, China Pharmaceutical University, #639 Longmian Avenue, Jiangning District, Nanjing 211198, People’s Republic of China

⁵ Department of Cardiothoracic Surgery, Zhongda Hospital affiliated to Southeast University, #87 Dingjiaqiao, Jiangning District, Nanjing 210017, People’s Republic of China

⁶ Department of Heart Surgery, Nanjing Shuiximen Hospital, #283 Shuiximen Avenue, Jiangning District, Nanjing 210017, People’s Republic of China

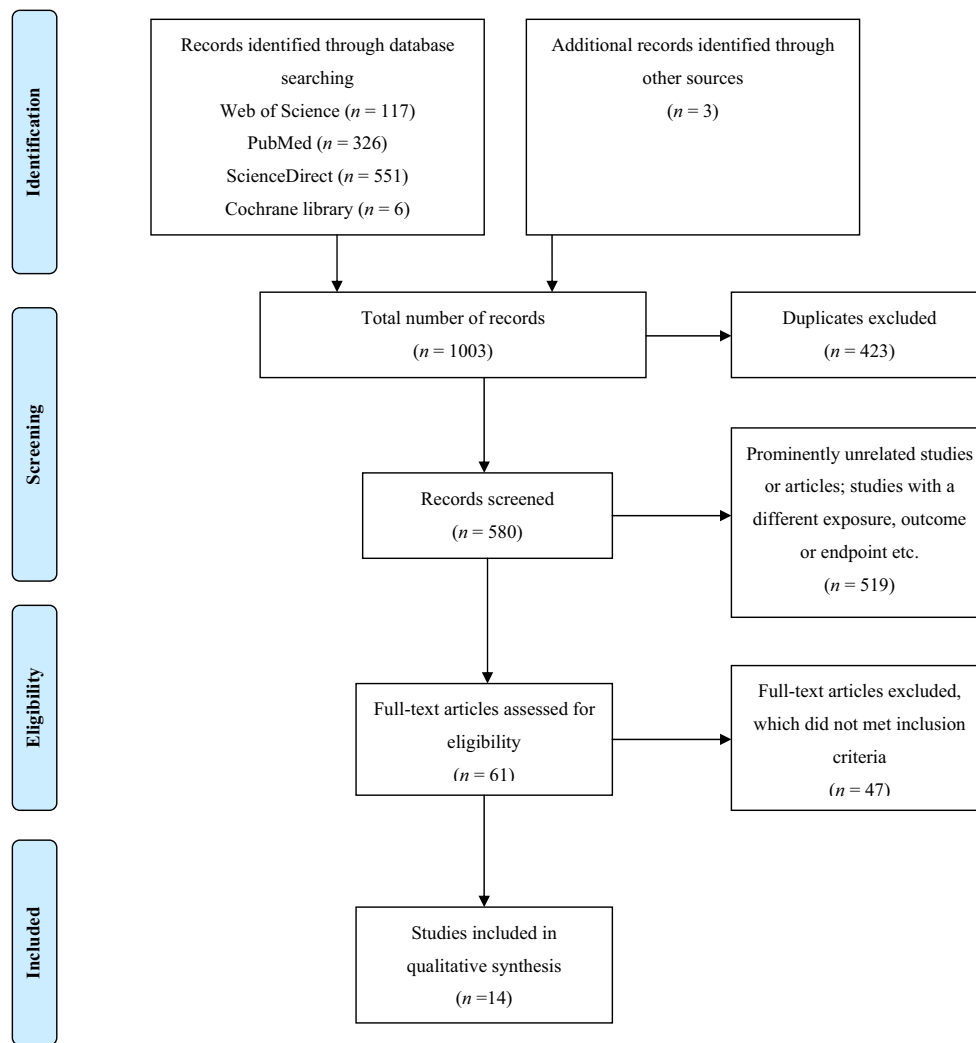


Fig. 1 Preferred Reporting Items for Systematic Reviews and Meta-Analyses (PRISMA) flow diagram of the study process