

Erratum to: Two cases of benign esophageal schwannoma with positive FDG-PET findings

Toshinobu Nakatsu · Satoru Motoyama · Kiyotomi Maruyama ·
Yusuke Sato · Shuetsu Usami · Kei Yoshino · Hajime Saito ·
Yoshihiro Minamiya · Hiroshi Nanjo · Jun-ichi Ogawa

Published online: 26 May 2012
© The Japan Esophageal Society and Springer 2012

Erratum to: Esophagus (2011) 8:289–293
DOI 10.1007/s10388-011-0290-8

The editors of *Esophagus* regret that the quality of Figs. 3 and 6 in the published article was not adequate for reproduction in the print version. Higher-resolution figures with new layouts are shown on the following page. They will be reproduced in color in the print version. The figure legends have been revised appropriately for the re-submitted figures.

The online version of the original article can be found under
doi:[10.1007/s10388-011-0290-8](https://doi.org/10.1007/s10388-011-0290-8).

T. Nakatsu (✉) · S. Motoyama · K. Maruyama · Y. Sato ·
S. Usami · K. Yoshino · H. Saito · Y. Minamiya · J. Ogawa
Department of Surgery,
Akita University Graduate School of Medicine,
1-1-1 Hondo, Akita 010-8543, Japan
e-mail: to4nob_nakatz@yahoo.co.jp

K. Yoshino · H. Nanjo
Department of Pathology,
Akita University Graduate School of Medicine,
Akita, Japan

Fig. 3 **a** The resected tumor was $50 \times 30 \times 30$ mm in size, and the cut surface was yellowish, homogeneous and elastic firm. **b** Histological examination revealed nuclear palisading and lymphoid cuffing. **c** Immunohistochemically, the tumor was positive for S-100 protein

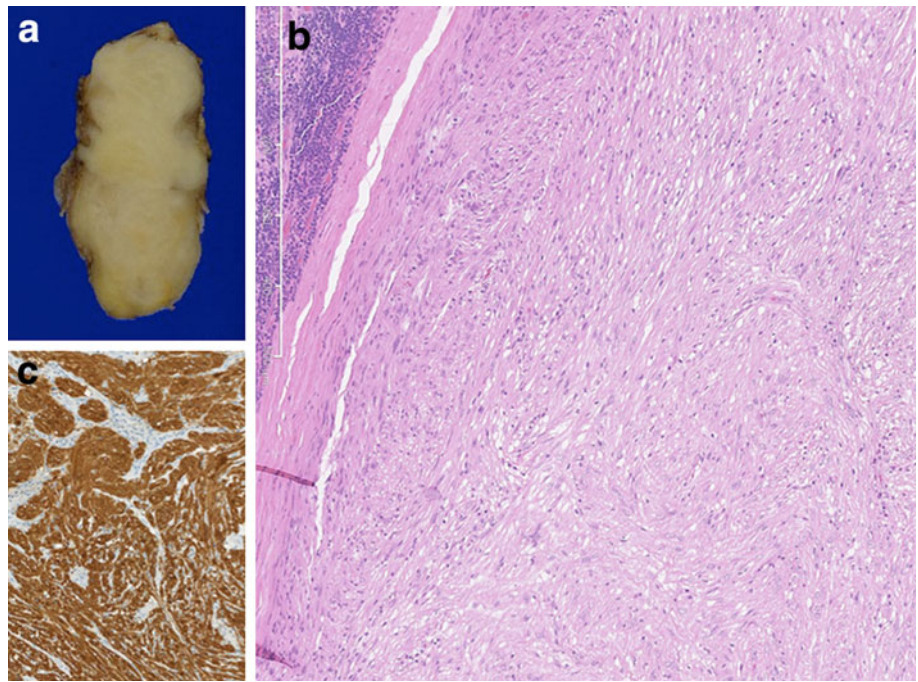


Fig. 6 **a** The resected tumor was $40 \times 35 \times 27$ mm in size, and the cut surface was yellowish, homogeneous and elastic firm. **b** Histological examination revealed nuclear palisading and lymphoid cuffing. **c** Immunohistochemically, the tumor was positive for S-100 protein

