

Landslides (2016) 13:1315–1318  
DOI 10.1007/s10346-015-0667-1  
Published online: 30 December 2015  
© Springer-Verlag Berlin Heidelberg 2015

**Ahmed Mohamed Youssef · Hamid Reza Pourghasemi · Zohre Sadat Pourtaghi · Mohamed M. Al-Katheeri**

## **Erratum to: Landslide susceptibility mapping using random forest, boosted regression tree, classification and regression tree, and general linear models and comparison of their performance at Wadi Tayyah Basin, Asir Region, Saudi Arabia**

### **Erratum to: 10.1007/s10346-015-0614-1**

The original version of this article, unfortunately, contained errors.

1. In Fig. 1, "Arabian Gulf" found in panel "a" should read "Persian Gulf". The correct image is shown in the succeeding page.
2. The second part of the Fig. 5 image is incorrect. The complete Fig. 5 is given in this article.

---

The online version of the original article can be found at <http://dx.doi.org/10.1007/s10346-015-0614-1>.

---

#### **A. M. Youssef**

Geology Department, Faculty of Science,  
Sohag University,  
Sohag, Egypt

#### **A. M. Youssef · M. M. Al-Katheeri**

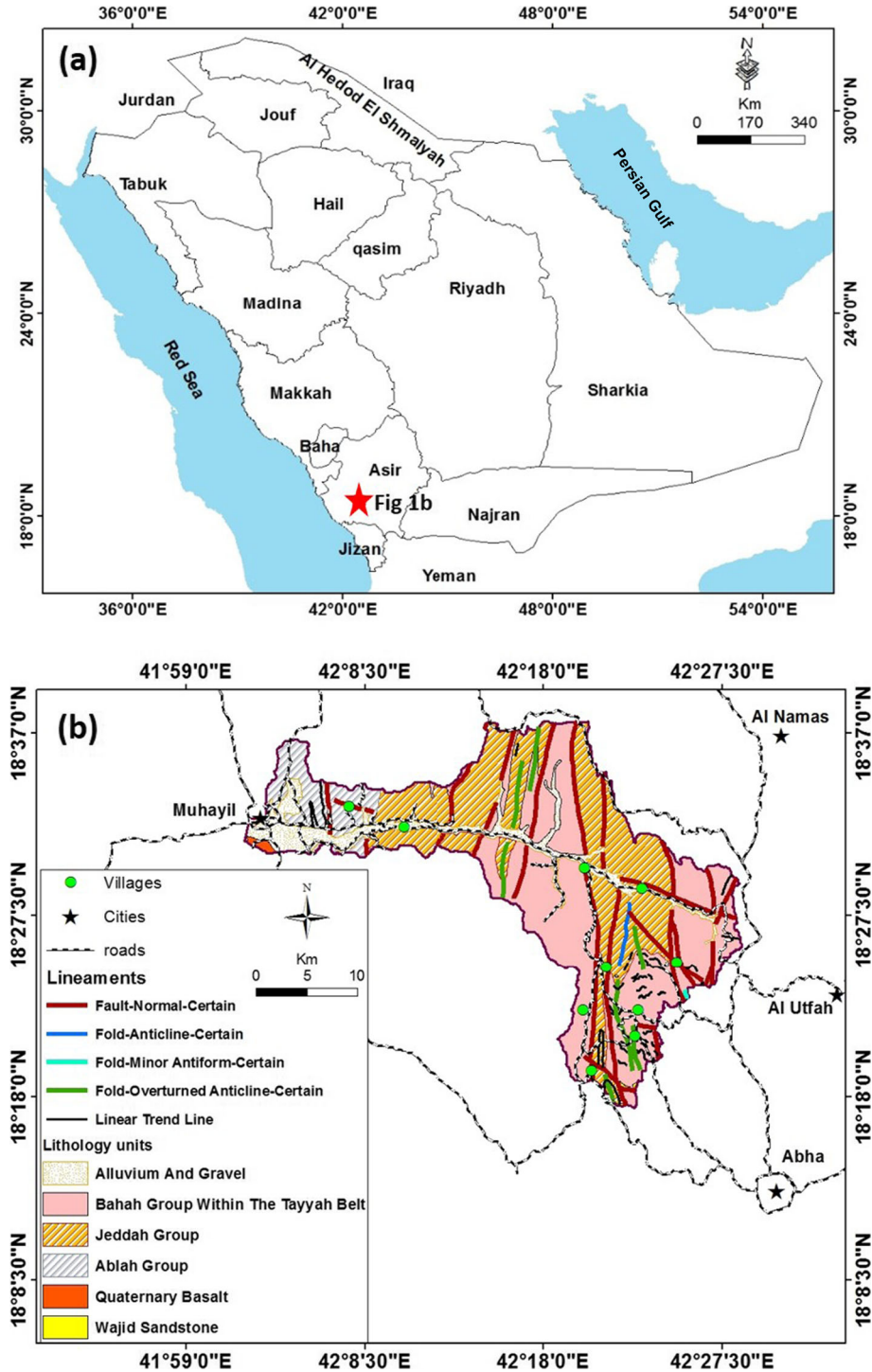
Geological Hazards Department, Applied Geology Sector,  
Saudi Geological Survey,  
P.O. Box 54141, Jeddah, 21514, Kingdom of Saudi Arabia

#### **H. R. Pourghasemi** (✉)

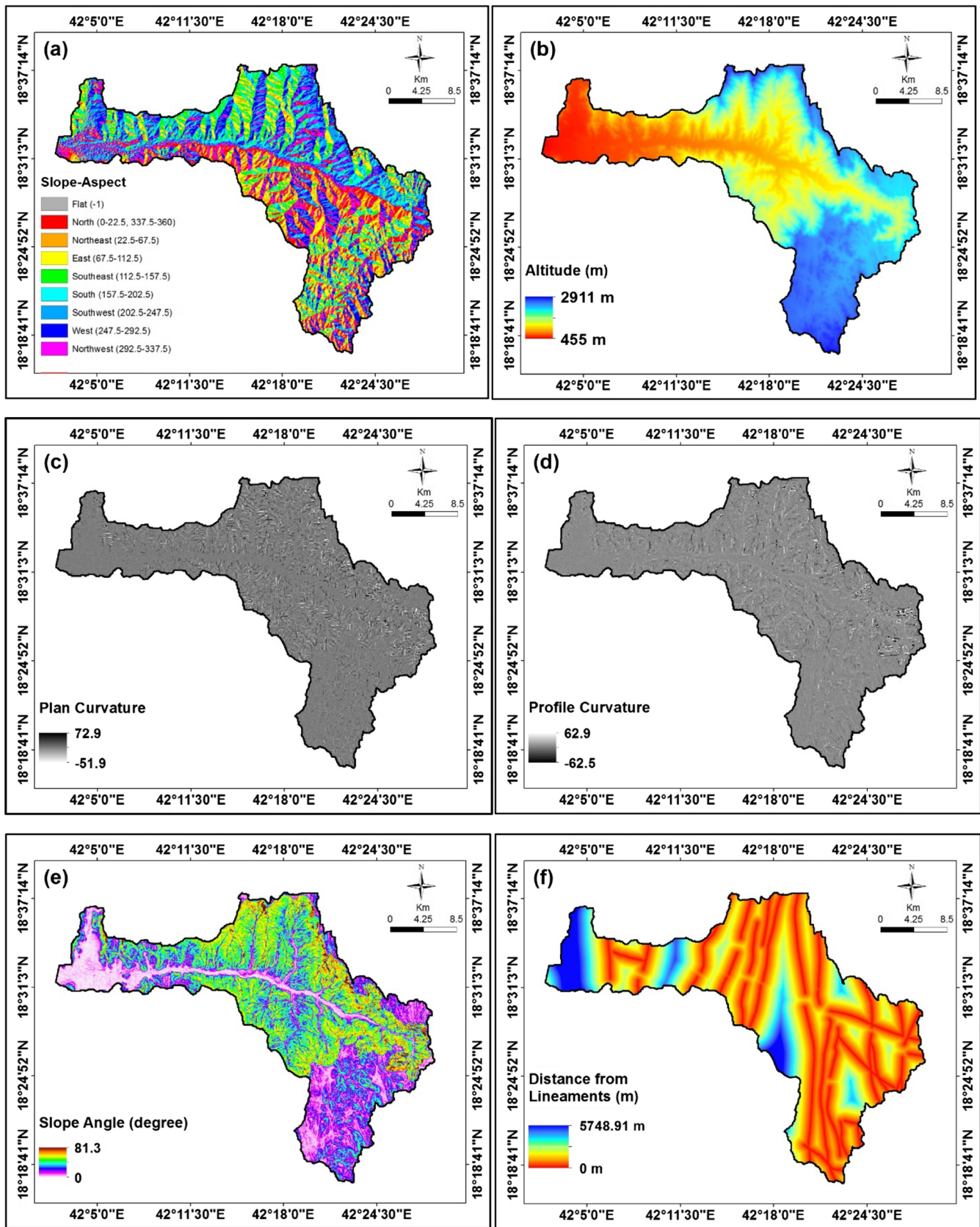
Department of Natural Resources and Environmental Engineering, College of Agriculture,  
Shiraz University,  
Shiraz, Iran  
e-mail: [hr.pourghasemi@shirazu.ac.ir](mailto:hr.pourghasemi@shirazu.ac.ir)

#### **Z. S. Pourtaghi**

Department of Environment Management Engineering, College of Natural Resources,  
Yazd University,  
Yazd, Iran



**Fig. 1** a Location of the study area in Saudi Arabia map. b Geology and structural map of the study area (note: urban areas and roads that are distributed in and around the study area overly the geology map)



**Fig. 5** Landslide conditioning factors maps used in this study: a slope aspect map, b altitude map, c plan curvature map, d profile curvature map, e slope angle map, f distance from faults map, g distance from streams map, h distance from roads map, i lithology map, j rainfall map, and k land use map

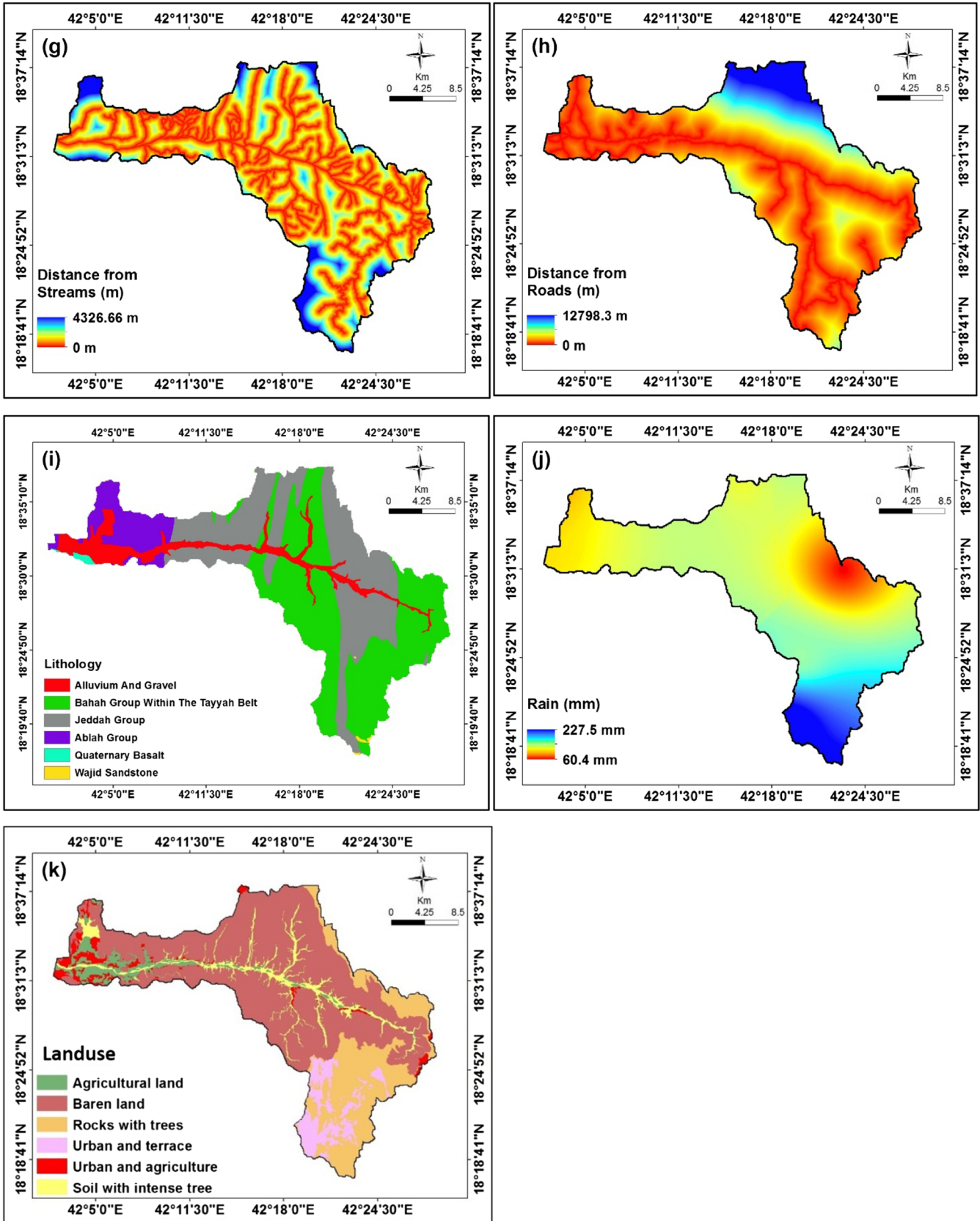


Fig. 5 (continued)