



Combining canopy height and tree species map information for large-scale timber volume estimations under strong heterogeneity of auxiliary data and variable sample plot sizes

Andreas Hill¹ · Henning Buddenbaum² · Daniel Mandallaz¹

Received: 19 July 2017 / Revised: 29 March 2018 / Accepted: 27 April 2018 / Published online: 12 May 2018
© The Author(s) 2018

Abstract

A timber volume regression model applicable to the state and communal forest area of the federal German state of Rhineland-Palatinate is identified using a combination of airborne laser scanning (ALS)-derived metrics and information from a satellite-based tree species classification map available on the federal state level. As is common in many forest inventory datasets, strong heterogeneity in the ALS data due to different acquisition dates and misclassifications in the tree species classification map had noticeable effects on the regression model's performance. This article specifically addresses techniques that improve the performance of ordinary least square regression models under such restricting conditions. We introduce a calibration technique to neutralize the effect of misclassifications in the tree species variable that originally caused a residual inflation of 0.05 in adjusted R^2 . Incorporating the calibrated tree species information improved the model accuracy by up to 0.07 in adjusted R^2 and suggests the use of such information in forthcoming inventories. We also found that including ALS quality information as categorical variables within the regression model considerably mitigates issues with time lags between the ALS and terrestrial data acquisition and ALS quality variations (increase of 0.09 in adjusted R^2). The model achieved an adjusted R^2 of 0.48 and a cross-validated root-mean-square error (RMSE_{cv}) of 46.7% under incorporation of the tree species and ALS quality information and was thus improved by 0.12 in adjusted R^2 (5% in RMSE_{cv}) compared to the simple model only containing ALS height metrics (adjusted $R^2 = 0.36$, RMSE_{cv} = 51.7%).

Keywords OLS regression · Standing timber volume · ALS canopy height model · Satellite-based tree species classification · Calibration · Forest inventory · Angle count sampling

Communicated by Arne Nothdurft.

Electronic supplementary material The online version of this article (<https://doi.org/10.1007/s10342-018-1118-z>) contains supplementary material, which is available to authorized users.

✉ Andreas Hill
andreas.hill@usys.ethz.ch

Henning Buddenbaum
buddenbaum@uni-trier.de

Daniel Mandallaz
daniel.mandallaz@usys.ethz.ch

¹ Department of Environmental Systems Science, ETH Zurich, Universitaetstrasse 22, 8092 Zurich, Switzerland

² Environmental Remote Sensing and Geoinformatics Department, Trier University, 54286 Trier, Germany

Introduction

Forest inventory methods are the primary tools used to assess the current state and development of forests over time. They provide reliable evidence-based information that is used to define and identify management actions as well as to adapt forest management strategies to both national and international guidelines. Two methods that have become particularly attractive are so-called *double-sampling* (Mandallaz 2008, Ch. 5) and *mapping* (Brosofske et al. 2014) procedures. The core concept of these methods is to use predictions of the terrestrial target variable at additional sample locations where the terrestrial information has not been gathered. These predictions are produced by models that use explanatory variables derived from *auxiliary data*, commonly in the form of spatially exhaustive remote sensing data in the inventory area. In particular, models to predict timber volume based on airborne laser scanning (ALS)

have been extensively investigated for a long time (Næsset 1997). The specific scope of double-sampling is to enlarge the terrestrial sample size by a much larger sample of predictions of the target variable in order to gain higher estimation precision without performing additional expensive terrestrial measurements. Model-dependent and design-based regression estimators are used in a broad range of double-sampling concepts and methods (Gregoire and Valentine 2007; Köhl et al. 2006; Mandallaz 2013a, b; Saborowski et al. 2010; Schreuder et al. 1993) and have been applied to existing inventory systems (Breidenbach and Astrup 2012; von Lüpke and Saborowski 2014; Mandallaz et al. 2013; Magnussen et al. 2014; Massey et al. 2014). While double-sampling methods provide reliable estimates for a given spatial unit, e.g., a forest district, they do not provide information about the spatial distribution of the estimated quantity within this area. For this reason, the same modeling technique used in double-sampling procedures has also been intensively used to produce exhaustive prediction maps that provide pixelwise estimations of a target variable in high spatial resolution (Bohlin et al. 2017; Hill et al. 2014; Latifi et al. 2010; Nink et al. 2015; Tonolli et al. 2011).

To allow for an area-wide application of the prediction model, both double-sampling and mapping methods require that the remote sensing data are available over the entire inventory area. This is usually not a limiting factor in *small-scale* applications. In the optimal case, the remote sensing data are in principle collected in accordance with the specific study objective. Quality standards that have often been addressed are that (a) the remote sensing data should be acquired close to or even at the time of the terrestrial inventory in order to ensure best possible comparability between the target variable on the ground and the remote sensing-derived variables (McRoberts et al. 2015); (b) the remote sensing technology and its spectral and spatial resolution should be chosen according to the modeling purpose (Köhl et al. 2006); and (c) the variation in quality of the remote sensing data over the inventory area should be minimized in order to avoid artificial noise in the data (Naesset 2014). Despite the increasing availability and decreasing costs of remote sensing data (White et al. 2016), these quality standards of the remote sensing data can often not be guaranteed for *large-scale* applications (Maack et al. 2016), and trade-offs must be accepted (Jakubowski et al. 2013). The prime objective is then to produce the best possible prediction model given the restrictions imposed by the available remote sensing information. The exploration of scarcely used remote sensing products and the optimization of prediction models under severe quality restrictions in the remote sensing data are thus one of the challenges in large-scale model-supported inventory applications.

Among the still rarely used remote sensing data in large-scale applications, the integration of tree species information

in prediction models—especially for timber volume estimation—has been stated as some of the most promising but often missing information (Koch 2010; White et al. 2016). As timber volume estimations on the single-tree level in forest inventories are often based on species-specific biomass and volume equations (Husmann et al. 2017; Zianis et al. 2005), the application of species-specific models is expected to be a key factor for improving estimation precision (White et al. 2016). This has been supported by studies from Breidenbach et al. (2008) who achieved a substantial improvement in accuracy of their timber volume prediction model when including a variable estimating the deciduous proportion derived from leaf-off ALS data. Similar gains in model performance were also reported by Straub et al. (2009) and Latifi et al. (2012) who used broadleaf and coniferous information based on color infrared orthophotographs as a categorical explanatory variable. However, studies that explore the use of more species-specific information (i.e., a further discrimination of tree species) as explanatory variables have been rare. Further investigations are thus necessary especially in countries whose forests are characterized by a larger variety of tree species that may also occur in mixed and uneven-aged stands (McRoberts et al. 2010). The area-wide tree species information in most studies was obtained from satellite and airborne remote sensing sensors based on automatic classification methods. Whereas the presence of misclassifications has already been addressed (Latifi et al. 2012), an issue that has so far been neglected is how misclassifications actually affect the prediction model (Gustafson 2003).

A frequently encountered problem in large-scale forest inventories is the lack of temporal synchronicity between the remote sensing acquisition and the terrestrial survey. As a result, the available remote sensing data often exhibit notable time lags with respect to the date of the terrestrial inventory. This has often been addressed as a major drawback, especially for the application of design-based change estimation (Massey and Mandallaz 2015).

Our study is embedded in the current implementation of design-based regression estimators (Mandallaz 2013a, b; Mandallaz et al. 2013) for estimating the standing timber volume within the state and communal forest management units over the entire state of Rhineland-Palatinate (RLP, Germany). With respect to this overall objective, the aim of this study was to derive an ordinary least square (OLS) regression model to generate predictions of the standing timber volume associated with a sample location of the Third German National Forest Inventory (BWI3) over the entire state and communal forest area (6155 km²). A merged ALS dataset from different acquisition years and a satellite-based tree species classification map for the five main tree species in RLP was available for the entire inventory area and consequently used to derive predictor variables. The major

limiting factors for using these data in a regression analysis are (a) variation in the ALS data quality as well as time lags of up to 10 years between the ALS acquisitions and the terrestrial survey, (b) misclassifications in the tree species classification map and (c) the ambiguous choice of a suitable extraction area (*support*) for all remote sensing information under angle count sampling in the terrestrial survey (variable sample plot sizes). For this reason, we address the following specific research questions:

1. How can tree species map information be optimally used within a regression model that predicts timber volume? What effects do misclassifications have on the predictions and how can these effects be minimized?
2. What are the effects of quality restrictions and substantial time lags between the ALS and terrestrial data acquisition on the regression model and how can these effects be mitigated?
3. Does support size influence model accuracy? What is the optimal support size and what are the determining factors?

Materials and methods

Study area

The German federal state Rhineland-Palatinate (RLP) is located in the western part of Germany and borders Luxembourg, France and Belgium (Fig. 1). With 42.3% (appr. 8400 km²) of the entire state area (19,850 km²) covered by forest, RLP is one of the two states with the highest forest coverage among all federal states of Germany (von Thünen-Institut 2014). The forest area of RLP is divided into three ownership classes, i.e., state forest (27%), communal forest (46%) and privately owned forest (27%). The most frequent tree species in RLP are European beech (*Fagus sylvatica*, 21.8%), oak (*Quercus petraea* and *Quercus robur*, 20.2%), Norway spruce (*Picea abies*, 19.5%), Scots pine (*Pinus sylvestris*, 9.9%), Douglas fir (*Pseudotsuga menziesii*, 6.4%), European larch (*Larix decidua*, 2.4%) and Silver fir (*Abies alba*, 0.7%). The share of broadleaf tree species is 58.7%. The forests of RLP further exhibit heterogeneous structures (von Thünen-Institut 2014): Around 82% of the forest area in RLP are mixed forest stands (i.e., at least two different tree species occur in the same stand) and 69% of the forest area exhibit a multilayered vertical structure. While the average tree age is around 80 years, most of the forest area (20%) is occupied by trees between 40 and 60 years of age, whereas 27% of the trees are older than 100 years. Spatially variable climate conditions have a strong influence on the local growth dynamics as well as tree species composition and create a large variety of forest structures, ranging from

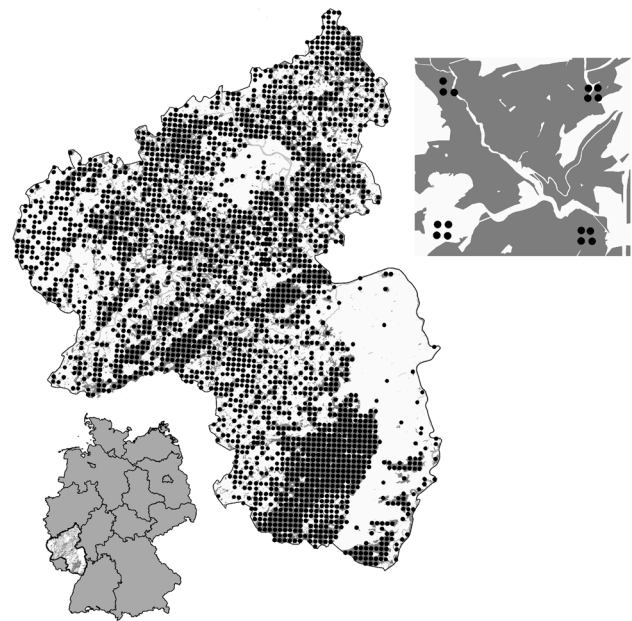


Fig. 1 Spatial distribution of the BWI3 cluster samples over Rhineland-Palatinate

characteristic oak coppices (Moselle Valley), pure spruce, beech and Scots pine forests (e.g., Hunsrück and Palatinate forest) to mixed forests comprising variable proportions of oak, larch, spruce, Scots pine and beech. Accordingly, RLP has been divided into 16 bioclimatic growing regions that form homogeneous areas with respect to the afore mentioned characteristics (Gauer and Aldinger 2005).

Terrestrial inventory data

The German National Forest Inventory (NFI) is carried out over the entire forest area of Germany in reoccurring time periods of 10 years. The most recent inventory (BWI3) has been conducted in the years 2011 and 2012. In this framework, Rhineland-Palatinate is covered by a 2 × 2 km grid that defines the sample locations for the terrestrial survey. A sample unit consists of four sample locations (also referred to as *sample plots*) that are arranged in squares (so-called *clusters*) with a side length of 150 m (Fig. 1). The number of plots per cluster can, however, vary between 1 and 4 depending on forest/non-forest decisions on the plot level (Bundesministerium and Ernährung 2011). In the field survey of the BWI3, sample trees for timber volume estimations are selected according to the angle count sampling technique (Bitterlich 1984), using a basal area factor of 4 that is, respectively, adjusted for boundary effects at the forest border (Bundesministerium and Ernährung 2011). A further selection criterion for a tree to be recorded is a diameter at breast height (*dbh*) of at least 7 cm. This sampling technique was applied to

8092 sample plots (2810 clusters) in RLP, resulting in the collection of 56,561 sample trees for which the dbh, the tree diameter at 7 m (D_7) and the tree species were recorded for all trees. Tree height measurements were taken only for a subset of all sample trees and used to predict the height for the remaining sample. During the last inventory, all plot center positions were remeasured with differential global positioning system (DGPS) technique. Knowledge about the exact plot positions was considered crucial to provide optimal comparability between the terrestrial observations and the information derived from the auxiliary data. A detailed analysis by Lamprecht et al. (2017) indicated that horizontal DGPS errors do not exceed 8 m for 80% of all plots in RLP. For 162 plots, the DGPS coordinates were replaced by their former target coordinates due to missing or implausible values. In order to derive a volume estimation for each sample tree, the BWI3 estimates a taper curve for each sample tree by calibrating the random effects term of linear mixed-effects taper models with the set of diameters and corresponding height measurements taken from the respective sample tree (Kublin et al. 2013). The integration of the derived taper curves consequently leads to a volume prediction for each sample tree. Since the overall objective of the study was to subsequently use the identified regression model for design-based timber volume estimations of state and communal forest management units, we already restricted the sample plots used for modeling the state and communal forest area (73% of the entire forest area of RLP). This provides the advantage that when the regression model is used as an *internal model* in design-based estimators, the model predictions hold the assumption on the residuals to be zero on average over the state and communal forest area by construction of OLS technique (Mandallaz 2013a, b; Mandallaz et al. 2013). The dataset of this study hence comprised 5791 plots (2055 clusters). For this sample, the timber volume density per hectare on plot level, $Y(x)$, was calculated according to the formula of one-phase one-stage sampling (Mandallaz 2008, Ch. 4.2). The timber volume density per hectare on plot level was used as the response variable in the regression analysis (Table 1).

Table 1 Descriptive statistics of the forest observed on NFI sample plots located within communal and state forest area ($n = 5791$)

Variable	Mean	SD	Maximum
Timber volume (m^3/ha)	300.86	195.55	1375.31
Mean DBH (mm)	354.90	137.22	1123.20
Mean height (dm)	239.60	72.43	497.43
Mean stem density per hectare	101.00	114.01	1010.31

Auxiliary data

ALS canopy height model

Between 2002 and 2013, the topographic survey institution of RLP acquired airborne laser scanning (ALS) data over the entire state of RLP at leaf-off condition (Fig. 2). The objective of this campaign was to derive a countrywide digital terrain and surface model based on the acquired ALS point clouds. During the extended acquisition period, airborne laser scanning technology and data quality evolved significantly. The tiles recorded in 2002 and 2003 have a rather poor quality with about only 0.04 points per m^2 , while more recently acquired datasets contained about 5 points per m^2 . The data were delivered as two separate datasets comprising the vegetation first pulse (VEF) and ground (GRD) points. All point clouds were stored as three-column (easting, northing, and height above sea level) ASCII files in tiles of 1 km^2 . In order to create a surface model (DSM) in a given raster resolution, the highest point of the combined VEF and GRD dataset was identified in each raster cell and saved as a thinned surface point cloud. For the elevation model (DEM),

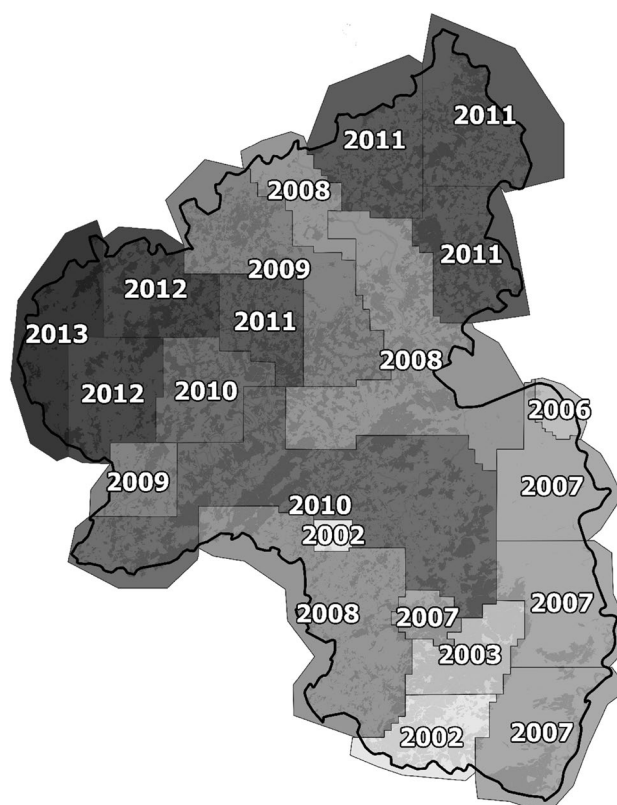


Fig. 2 Separate ALS acquisitions in Rhineland-Palatinate between 2002 and 2013. The colors also indicate the quality of the data: light: low point densities ($0.04/\text{m}^2$), dark: high point densities ($> 4/\text{m}^2$). Blue semitransparent layer: state and communal forest area. (Color figure online)

the mean of all GRD points in the cell was calculated, and the result was saved as a thinned ground point cloud. The thinned point clouds were then aggregated to larger tiles and interpolated to raster images using a Delaunay interpolation in the MATLAB software (Mathworks 2017). The resulting DSM and DEM raster sets were then subtracted from each other to calculate a canopy height model (CHM) in raster format, providing discrete information about the canopy surface height of the entire forest area of RLP in a spatial resolution of 5 m. The thinning process led to much smaller datasets that could be processed in larger tiles and considerably lowered processing times compared to the original dense point clouds. Since the data were recorded in leaf-off condition, the original point clouds contained many returns from within the crowns of deciduous trees. The thinned dataset provided the advantage that those measurements did not skew the vegetation height estimate in the final CHM.

As explanatory variables, the mean canopy height (*meanheight*) and the standard deviation (*stddev*) were calculated as the mean and standard deviation of all raster values within a predefined circle (i.e., *support* of the explanatory variable, see “Choice of support under angle count sampling” section) around each sample plot center. In order to correct for edge effects at the forest border, each support area was previously intersected with the state and communal forest area, which was defined by a polygon mask provided by the forest service (Fig. 3). Restricting the support area and thus the evaluation of the auxiliary data to the forest area is a means to optimize the coherence between explanatory variables computed at the forest boundary and the corresponding terrestrial response variable (Mandallaz et al. 2013). The tree height is one prominent predictor variable in the taper functions of the BWI3 that are used to calculate a timber volume value for each sample tree (Kublin 2003; Kublin et al. 2013). A visual inspection of the tree volumes of all sample trees collected in the BWI3 within RLP against their tree heights also revealed the characteristic shape of an allometric relationship between these variables (Online Resource 1). It was hypothesized that this relationship on single-tree level is also apparent on the aggregated level of a sample plot and cluster and can be used within the frame of regression modeling.

The strength of correlation between *meanheight* and timber volume on the plot level was expected to show high variation according to the mentioned time lag up to 10 years between ALS acquisition and terrestrial survey. The quality of the height information was also expected to vary according to changing sensor technologies and different point densities used over the years. For these reasons, the ALS acquisition year (*ALSyear*) for each sample plot was considered as a potential categorical explanatory variable to explain the variation in the data introduced by these factors. For this purpose, the acquisition year 2008 was further divided into 2008 and 2008_1. In the latter, the data quality turned out

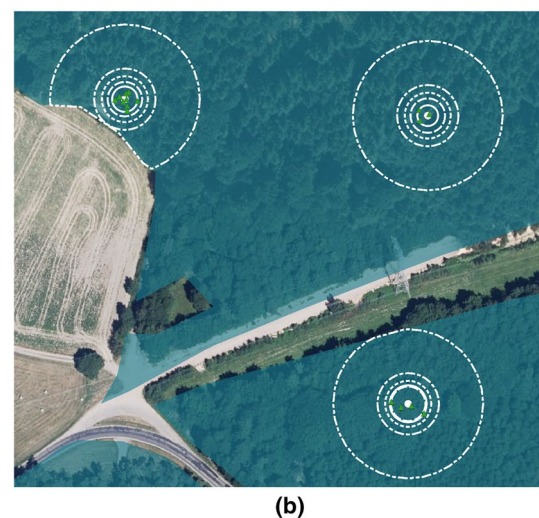
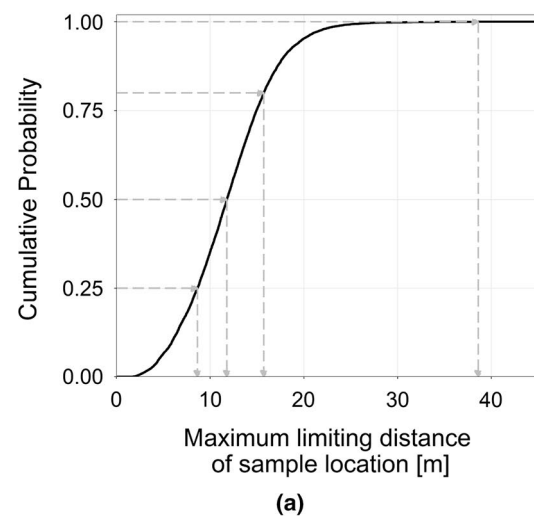


Fig. 3 Identification (a) and visualization (b) of potential supports used for calculating the predictor variables on plot level. **a** ECDF of maximum limiting distances of all BWI3 sample locations in RLP. **b** Circular supports used to extract explanatory variables around sample locations. Dash dot dot line: q100, dash dot line: q80, dot dot line: q50, dot line: q25, solid line: individual support, triangles: sample trees

to be very poor due to sensor failures during the acquisition. Additionally, the years 2006 and 2007 as well as 2012 and 2013 were pooled in order to increase the number of observations per factor level for modeling reasons. As a result, the *ALSyear* variable comprised nine categories (2002, 2003, 2007, 2008, 2008_1, 2009, 2010, 2011 and 2012).

Tree Species Classification Map

A countrywide satellite-based classification map of the five main tree species (European beech, sessile and pedunculate oak, Norway spruce, Douglas fir, Scots pine) described in Stoffels et al. (2015) was used to derive tree species

information on sample plot level. The classified tree species map has a grid size of 5 m and predicts five of the seven tree species that are used in the BWI3 taper functions (Kublin et al. 2013) to calculate the timber volume of a sample tree. Due to unavailable satellite data for the classification, the tree species map excluded one patch with an area of 415 km² in the southwest part of RLP, and two further patches with an area of 76 and 100 km² in the northern part (Stoffels et al. 2015). The tree species information was consequently missing for 411 (7%) of the 5791 sample locations.

Prediction of main plot tree species

A visual inspection of all BWI3 sample trees of RLP suggested that a stratification of the relation between tree height and timber volume according to these seven tree species may provide a considerable reduction in variation within the tree species groups (Online Resource 1). This led to the hypothesis that this tree species-specific signal might also be apparent on sample plot and cluster level and can consequently be used to increase the accuracy of the prediction model. Based on the tree species classification map, the main tree species of each sample plot was calculated as an additional categorical explanatory variable (*treeSpecies*) with six categories following a similar approach as Latifi et al. (2012): One of the five tree species was assigned as the main plot tree species if its proportion within the edge-corrected support around the sample location exceeded a predefined threshold. If this threshold was not exceeded by exactly one of the five tree species, the respective sample plot was assigned the category “Mixed”. We hypothesized that the choice of the threshold-value might have an influence on the resulting classification accuracy and the regression model accuracy (“Model building and evaluation” section). We thus investigated the application of five threshold settings, i.e., 0, 50, 60, 80 and 100%.

Calibration

Our analyses revealed that the prediction of the main tree species for a sample plot can be subject to misclassifications (“Classification accuracies” section). Errors in the explanatory variables of linear regression models can, however, lead to a bias of the regression coefficients in the direction of zero due to an artificial introduction of noise (Carroll et al. 2006, Ch. 3). This can cause an inflation of the residual variance and a consequent decrease in the model accuracy (Magnussen et al. 2010). In case of classification, the impacts of misclassifications on the model properties are even harder to predict (Gustafson 2003, Ch. 3). While errors in the explanatory variables do not affect the unbiasedness of the estimators in the design-based framework, a reduction or elimination of the classification errors could provide an

improvement in the regression model accuracy and thereby potentially lead to smaller prediction and estimation errors. We therefore addressed the effect of misclassifications in the *treeSpecies* variable categories as well as means to correct these errors.

We transferred the concept of *regression calibration* as known from classical measurement error statistics (Carroll et al. 2006) to the problem of misclassifications in the *treeSpecies* variable. In regression calibration, one considers an error-prone explanatory variable W that can be measured in high quantity, whereas X constitutes the same but error-free variable whose determination is, however, very expensive. In order to yield a corrected or less error-prone version of W , one can define a calibration model $f_{calmod}(X, W)$ that predicts X as a function of W . After calibration on a training set, f_{calmod} can then be applied to any observed W and yields the corrected, less error-prone variable W_{calib} . Using W_{calib} instead of W in the regression model then asymptotically provides an unbiased estimate of the regression coefficients and thus corrects for the attenuation to zero.

We transferred this concept by using a random forest algorithm (Breiman 2001) as calibration model. We considered the main tree species of the sample trees at each plot location x as the error-free variable *treeSpecies_{terr}*, that would also yield the highest model accuracies when used as predictor variable. The objective of the calibration model was thus to provide an improved classification accuracy of each predicted main plot tree species category with respect to *treeSpecies_{terr}*. The calibration model was considered to correct for potential systematic misclassifications and thus minimize the effect of misclassifications on the regression model when substituting the uncalibrated with the calibrated *treeSpecies* variable. The random forest algorithm is a machine learning algorithm that grows a large number of decorrelated classification trees by considering only a subset of all provided predictor variables for each split. In the case of classification, new data are thus predicted by aggregating the predictions of all trees using a majority vote. We calibrated the random forest algorithm (f_{RF}) with a set of p predictor variables that comprised the initial prediction of the main plot tree species (*treeSpecies*), the mean canopy height (*meanheight*) and standard deviation (*stddev*) derived from the CHM, the proportion of coniferous trees estimated from the tree species classification map (*prop.conif*) and the bioclimatic growing region (*wgb*) at the sample location (Eq. 1). Using explanatory variables of the timber volume regression model in the calibration model provided the advantage of reduced data storage compared to computing alternative variables for calibration. The calibration model was implemented using the random forest algorithm (Liaw and Wiener 2002) in the statistical software *R* (R Core Team 2016). The algorithm was grown with 2000 trees, considering $\sqrt{p} \approx 3$ of the predictors for each split.

$$treespecies_{terr}(x) = f_{RF}(treespecies, meanheight, stddev, prop.conif, wgb) \quad (1)$$

The calibration model was subsequently applied to the entire dataset. We then investigated the effect on the regression model performance (regression coefficients, model accuracy) when substituting the calibrated (less error-prone) for the uncalibrated (most error-prone) variable, and likewise for the actual (error-free) main plot tree species derived from the sampled trees of the respective sample plot under identical threshold settings.

Choice of support under angle count sampling

One characteristic of angle count sampling applied in the BWI3 is that a sample plot does not have a fixed radius in which trees are selected (*fixed-radius plot*), but each tree generates an individual radius from the plot center depending on its diameter at breast height (*variable-radius plot*). This tree-individual radius is known as the *limiting distance* from the plot center where the tree would still be included in the sample. A consequence of the absence of a fixed plot radius is the question about the optimal support (Hollaus et al. 2007), i.e., the spatial extent around the plot center in which the auxiliary information is evaluated and transformed into an explanatory variable. It has widely been hypothesized that the best relationship between the target variable on the ground and any explanatory variable derived from the auxiliary information is obtained if the support is spatially identical to the sample plot extent. In case of angle count sampling, an individual extent for each sample plot can be approximated by regarding the maximum limiting distance of its sample trees as the outer plot radius. However, many design-based applications under double-sampling do not allow for a between-plot change of the support for a specific explanatory variable (Mandallaz 2013a, b).

For this reason, the task is to find a unique support for each auxiliary information that leads to the best overall model accuracy. Deo et al. (2016) conducted extensive analysis to identify optimal supports for modeling standing timber volume for *variable-radius plot* designs in conifer forests. They analyzed 24 different radii (i.e., circular supports) in which they extracted 57 metrics from a ALS-derived point cloud with an average point density of 18 pulses per square meter. They successively evaluated the prediction performance of each support size by using the ALS metrics in a random forest algorithm and comparing the resulting model accuracies. In order to identify the best-performing supports for our explanatory variables, we followed a similar approach. The explanatory variables were calculated using *individual* (i.e., plot-varying) supports (*ind*), i.e., an individual support radius was used for

each plot according to the maximum limiting distance of all sample trees associated with the respective sample plot. We then compared the model accuracies achieved by the individual supports against the model accuracies from a set of *fixed* (i.e., non plot-varying) supports. The extents of the fixed supports were chosen from the cumulative distribution function (ECDF) of the maximum limiting distances of all 5791 sample plots of the analyzed forest area (Fig. 3). We considered the 25th (q_{25} , 9 m), 50th (q_{50} , 12 m), 80th (q_{80} , 15 m) and the 100th (q_{100} , 38 m) percentiles, resulting in support diameters of 18, 24, 30 and 76 m (Fig. 3). While in this study we also used circular supports to extract the auxiliary information, also other support shapes are possible (e.g., rectangles, hexagons). We also want to emphasize that the use of different support sizes for each explanatory variable is perfectly valid in the infinite population framework of design-based estimators (Mandallaz 2013a, b).

Model building and evaluation

In order to judge the quality of the *treespecies* variable, the user's accuracy for each classified species category and the overall accuracy of the classification scheme were calculated based on the confusion matrix (Congalton and Green 2008). As reference data, we calculated the actual main plot tree species by applying the respective threshold to the sample trees of each sample plot. The classification accuracy was evaluated for all support sizes for both the calibrated and the uncalibrated *treespecies* variables. The measures of the regression model accuracy using both CHM and *treespecies* variables were defined as the 10-fold cross-validated root-mean-square error ($RMSE_{cv}$, Eq. 2) and the adjusted coefficient of determination (adjusted R^2) of the multiple linear regression model defined in Eq. (3). Additionally, we considered the interaction terms *meanheight: treespecies*, *meanheight²: treespecies*, *meanheight: ALSyear*, *stddev: ALSyear* and *meanheight: stddev* and performed a variable selection based on the Akaike information criterion (AIC) (Akaike 2011) in order to minimize the number of variables in the model. Due to a pronounced unbalanced design in the *treespecies-ALSyear* strata (Online Resource 2), no interaction between *treespecies* and *ALSyear* was possible. We evaluated the model for all support combinations, considering the use of individual support sizes for each auxiliary information, using both the calibrated and the uncalibrated *treespecies* variable. The calibration model ("Tree species classification map" section) for the *treespecies* variable was recalculated for each respective support and threshold setting.

A total of 206 sample plots included no sample trees and the timber volume density $Y(x)$ was thus set to zero. These *zero-plots* were removed from the modeling dataset since they acted as leverage points in cases where the ALS height metrics were recorded long before the terrestrial survey.

Fig. 4 Classification accuracy for the main tree species of a sample location before and after calibration: (top) overall accuracies. (Bottom) user’s accuracies. *ind* plot-individual support sizes

Together with the missing tree species information (“Tree species classification map” section), the modeling dataset *s* was limited to $n = 5171$ observations.

$$RMSE = \sqrt{\frac{\sum_{x \in S} (\hat{Y}(x) - Y(x))^2}{n}} \tag{2a}$$

$$RMSE\% = \frac{RMSE}{\frac{1}{n} \sum_{x \in S} Y(x)} \tag{2b}$$

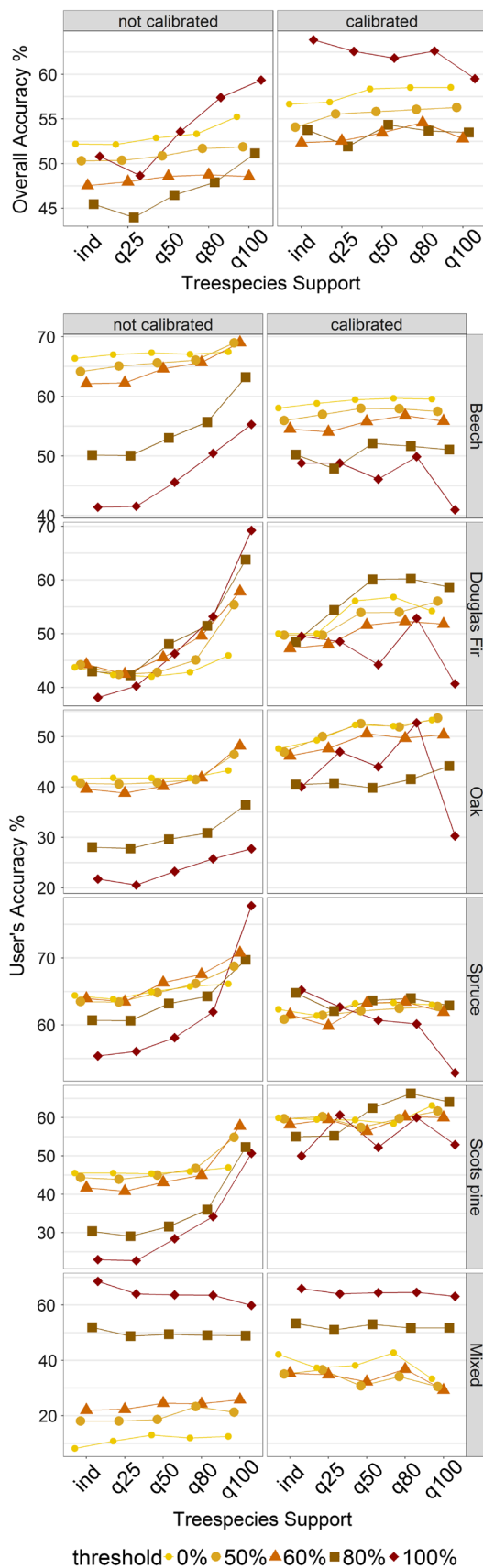
$$Y(x) = \beta_0 + \beta_1 \cdot meanheight + \beta_2 \cdot meanheight^2 + \beta_3 \cdot stddev + \beta_4 \cdot ALSyear_1 + \dots + \beta_{12} \cdot ALSyear_9 + \beta_{13} \cdot treespecies_1 + \dots + \beta_{18} \cdot treespecies_6 + \varepsilon(x) \tag{3}$$

Results

Classification accuracies

Effect of support size and threshold

Evaluating the uncalibrated tree species predictions revealed a dependency of the classification accuracies on both the applied threshold and the support size. Firstly, increasing the threshold led to a decrease in the user’s accuracies (UA) for most of the tree species independent of the support choice (Fig. 4). The reason for this is that raising the threshold to higher values leads to a higher probability for the reference class than for the predicted class to be assigned as class “Mixed”. This is due to the distinct difference in the spatial resolution between the reference and prediction data: The rather coarse spatial resolution of the tree species raster map causes the predicted class to remain classified as one of the five tree species much longer than the reference data, which consist of individual sample trees of a sample location. This effect is amplified by high thresholds. The probability of the predicted class to also be classified as “Mixed” can, however, be raised by increasing the number of raster cells to be evaluated. For this reason, the user’s accuracies improve when using larger support sizes, and this effect is most pronounced under high thresholds. This scale-threshold dependency of the user’s accuracy particularly affects tree species that most commonly occur in mixed forest stands in Rhineland-Palatinate, i.e., *Scots pine*, *oak* and *beech*. The user’s accuracies for tree species that are mostly prominent in pure forest stands (*spruce*, *Douglas fir*) logically turned out to be much more robust to changes in the thresholds and



support sizes. Among the uncalibrated tree species predictions, *beech* and *spruce* produced the best predictions achieving UAs of up to 70 and 80%. Although the predictions for *Douglas fir* and *Scots pine* generally performed less well than *beech* and *spruce*, similar UAs can be produced by adjusting the threshold and support choices. UAs for *oak* never performed better than 50%. A detailed table of the user’s and overall accuracies is provided in Online Resource 3.

Calibration

Calibration substantially diminished the effect of the scale-threshold dependency for the five tree species and also increased the UAs for *Scots pine* and *oak*. Whereas the UAs for *beech* and *spruce* were found to be slightly lower after

calibration, the overall accuracy under each support choice was always considerably increased by calibrating the tree species prediction (Fig. 4). With respect to the calculated random forest models, the initial tree species prediction (*trepecies*) and the information about the growing region (*wgb*) turned out to be the most valuable information, followed by the estimated proportion of coniferous trees (*prop.conif*) and the mean canopy height (*meanheight*).

Regression model accuracies

Effect of support size and threshold

Figure 5 shows the accuracies of the regression model (Eq. 3) achieved under all possible combinations of support

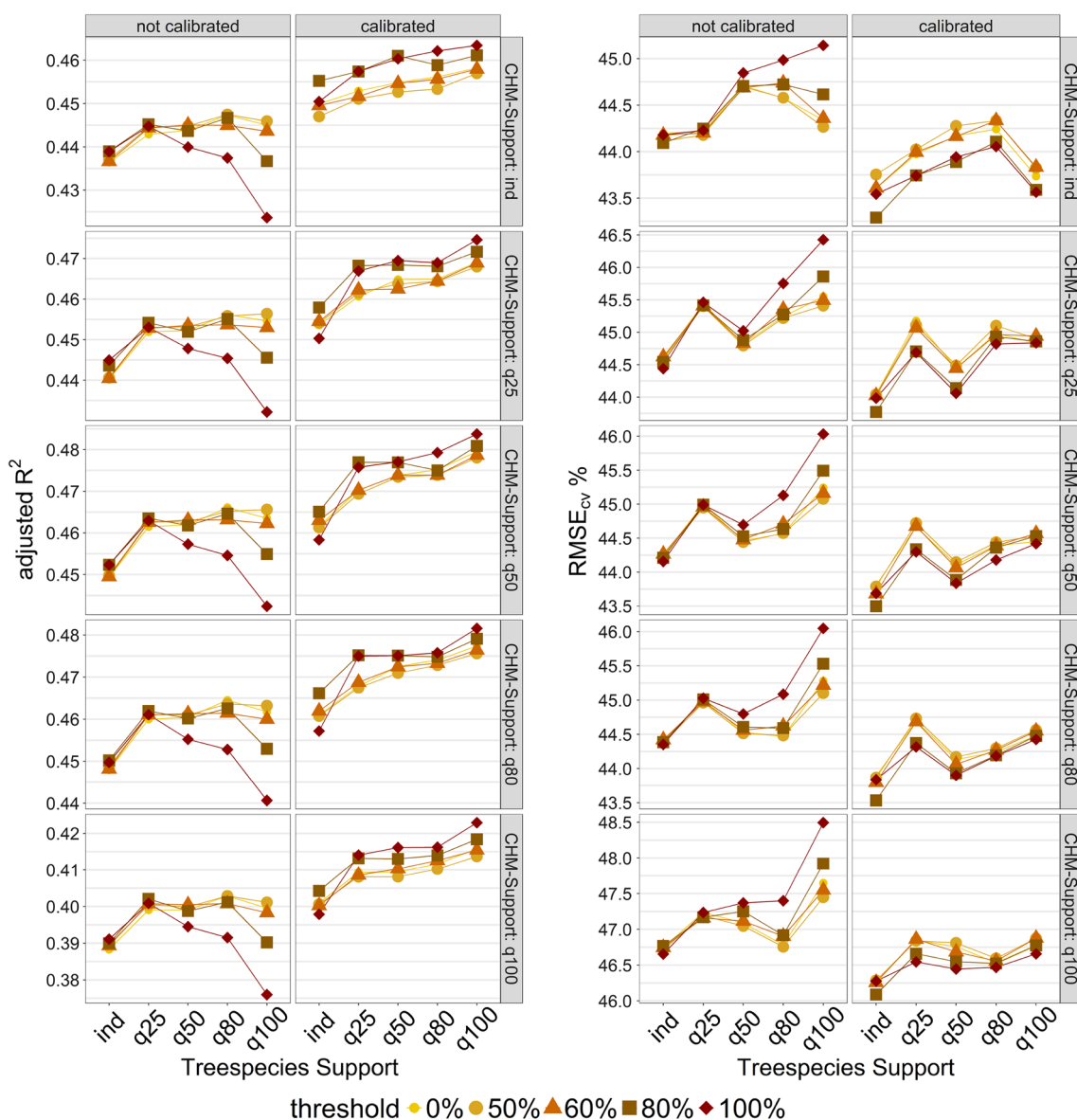


Fig. 5 10-fold RMSE_{cv} [%] and adjusted R² realized under various support choices for the CHM and *trepecies* explanatory variables

sizes for the auxiliary data. The stepwise selection procedure always included all considered single and interaction terms. In terms of adjusted R^2 and $RMSE_{cv}$, the analysis revealed that the choice of the CHM support size controls the overall level of the model's accuracy. The information about the main plot tree species can then be used to further improve the model fit under suitable *tree species* support and threshold settings. When using the uncalibrated *tree species* variable, an increase in the *tree species* support size causes an increase in the model performance if low thresholds are used, whereas high thresholds (80%, 100%) cause a decrease in the model performance. This threshold dependency could be removed by calibrating the *tree species* variable. The highest adjusted R^2 and the lowest $RMSE_{cv}$ were realized using the $q50$ support for both the CHM and calibrated *tree species* variables in combination with a (*tree species*) threshold of 100%, resulting in adjusted R^2 of 0.48 and $RMSE_{cv}$ of 136.62 m²/ha (43.8%). However, various support and threshold combinations for the CHM and *tree species* variables can be used to yield almost identical $RMSE_{cv}$ and adjusted R^2 values. A detailed table of the model accuracies is given in Online Resource 4.

Effect of misclassifications

We assessed the magnitude of the misclassification effect for all models that were analyzed in “Regression model accuracies” section, i.e., for all possible support and threshold combinations for the CHM and *tree species* predictor variables. We first compared the adjusted R^2 of each model when using the uncalibrated *tree species* variable against the adjusted R^2 using the actual, i.e., error-free variable. We then did the same comparison for the model using the calibrated *tree species* predictor variable. Figure 6 provides

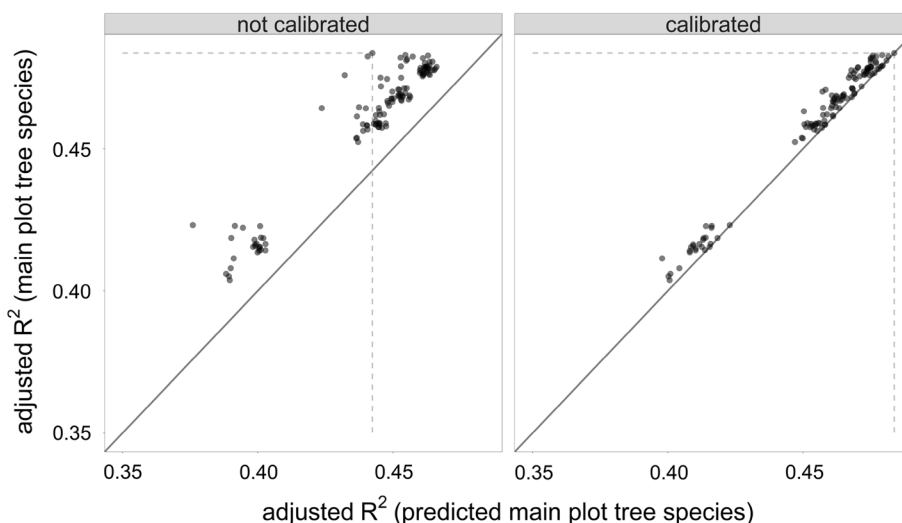
a visualization of this comparison. Note that only the model with the predicted tree species variables can be applied to additional sample locations where no terrestrial survey has been carried out.

As expected, the highest adjusted R^2 for every evaluated model was always achieved using the error-free tree species variable, whereas the misclassifications in the tree species variable led to a systematic decrease in the model accuracy. The calibration of the initially predicted main plot tree species using the random forest classification algorithm (“Tree species classification map” section) turned out to not only improve the classification accuracies (“Classification accuracies” section), but also to considerably decrease the effect of the misclassifications on the regression model predictions and accuracy. Figure 6 (right) shows that the adjusted R^2 under the actual and the calibrated predicted tree species variable are in general much closer to, and in many cases even on the identity line. The differentiation into two distinct point clouds results from the poor model performance under support size $q100$ for the CHM variables (i.e., the lower point cloud). Whereas the misclassifications in the uncalibrated *tree species* variable led to a residual inflation of 0.01–0.05 in adjusted R^2 , it was only between 0 and 0.01 after calibration. Further analysis revealed that when using the calibrated *tree species* variable, the regression coefficients were almost identical to the ones received using the actual main plot tree species.

Final regression model

In order to address research questions 1 and 2 (i.e., the gain in model accuracy by tree species information and effect of heterogeneity in the ALS data), we investigated the model properties in more detail. For this purpose, we decided to use the best found model that was achieved

Fig. 6 Effect on the adjusted R^2 when substituting the actual main tree species with the predicted main tree species of a sample plot. Each point in the graph represents the timber volume regression model under different support and threshold settings. The dotted line tracks the model with the highest adjusted R^2 under the use of the error-free *tree species* variable. Semitransparent colors for the data points are used to visualize overlap.



under the support settings of q_{50} for both auxiliary data with a threshold of 100% for the tree species variable as the regression model of choice. The reason for inspecting this model was that (a) the model provided the highest adjusted R^2 among all validated models while reducing the data handling complexity for upcoming applications (i.e., identical support sizes for all remote sensing data) and (b) the calibration neutralized the effects of misclassifications on the model predictions. The interaction term between $meanheight^2$ and $tree\ species$ (i.e., considering separate curvatures for each tree species) turned out not to have a significant influence on the model accuracy and was dropped, resulting in an adjusted R^2 of 0.48 and a slightly increased $RMSE_{cv}$ of 140.62 m^2/ha (46.7%). The final model thus comprised 39 parameters (regression coefficients), i.e., the intercept, three main effects for continuous variables, 13 main effects for categorical variables and 22 interaction parameters (Table 3).

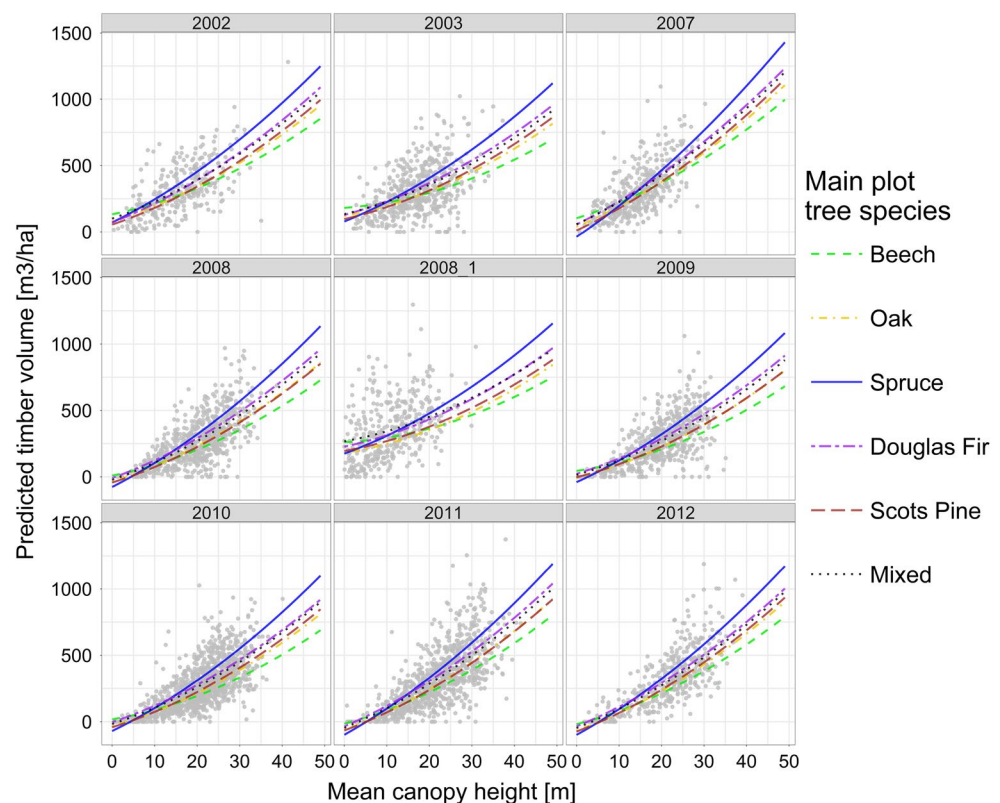
We also conducted an analysis for detecting influential data points or outliers for the final regression model. We here considered the commonly applied criteria of leverages and Cook's Distance as among others described in Fahrmeir et al. (2013, pp. 160–167). The critical threshold of $2p/n$ (i.e., twice the average of the hat matrix' diagonal entries) was exceeded by 10% of the observations. However, only 3% of these leverage points were assigned to studentized residuals with values > 1 or < -1 . Removing these observations

from the dataset and refitting the model led to an adjusted R^2 of 0.49 compared to 0.48 when including them. Additionally, Cook's Distance values D_i did not exceed a value of 0.019, and were thus far apart from the commonly used critical threshold of $D_i > 0.5$ that indicate a considerably change of the regression model results when omitting them. We thus decided not to remove any observations from the modeling dataset.

Interpretation of final regression model

Figure 7 provides a visualization of the timber volume predictions separated by the calibrated tree species and the ALS acquisition years. Sample plots classified as *oak* and *Scots pine* revealed to have an almost identical relationship (nearly identical slopes) for the mean canopy height–timber volume relationship. They only differ by a marginally higher intercept for *Scots pine* plots, meaning that given the same mean canopy height a sample plot dominated by *Scots pine* yields a marginally higher timber volume on the plot level than a plot dominated by *oak*. *Beech*-dominated sample plots tend to achieve a higher timber volume than *oak* and *Scots pine* for canopy heights below 20 m, but realize the lowest timber volumes for canopy heights above 20 m. Sample plots dominated by any of the remaining coniferous tree species (*Douglas fir*, *spruce*) revealed to have higher slopes

Fig. 7 Visualization of the timber volume prediction function (*final regression model*) on the sample plot level for each main plot tree species and ALS acquisition year. For visualization purposes, the predictor variable *stdev* was set to its average value within the respective *tree\ species* and *ALS\ year* categories. The terrestrially observed timber volume values are plotted in the background



than broadleaf classified plots. This indicates that given the same mean canopy height, sample plots dominated by *Douglas fir* and *spruce* yield higher timber volume values than broadleaf- or *Scots pine*-dominated sample plots, and this difference becomes more pronounced with increasing mean canopy heights. Within the group of coniferous-dominated sample plots, *spruce* turned out to have the highest slope, thereby yielding the highest timber volume values for mean canopy heights above 15 m. An undesired characteristic of the model is that the predicted timber volume can in some cases (< 1%) take negative values for low canopy heights (e.g., for *spruce*-dominated plots with *meanheight* below 5 m and *stdev* of 4 m). However, we chose not to use a log-transformation of the response variable. Doing so would have prevented the subsequent calculation of the g-weight variance of the design-based estimators (Mandallaz 2013a; Mandallaz et al. 2013), which is only possible for response variables on the original scale. The g-weight variance provides the benefit of a better variance estimate for internal models by considering the dependency of the regression coefficients on the realized sample. The rare occurrence of negative predictions were, however, not considered to have an influence on subsequent design-based estimates when averaging multiple predictions within given spatial domains.

Effect of time lags and heterogeneity in ALS data

Incorporating the ALS acquisition year as a categorical variable (*ALSyear*) in the regression model substantially accounted for the variability in the data introduced by (a) the time lags between ALS acquisition and terrestrial survey, and (b) variation in ALS data quality which are due to sensor and postprocessing techniques (Table 3). Whereas the adjusted R^2 for the regression model without considering the ALS acquisition year as additional predictor variable (*submodel 1*) was 0.36, it could already been increased to 0.40 by including the tree species variable (*submodel 2*). A further stratification by the ALS acquisition year increased the adjusted R^2 of *submodel 1* from 0.36 to 0.45, and the adjusted R^2 of *submodel 3* from 0.40 to 0.48.

We further analyzed the model residuals within each ALS acquisition year (within-group variation) for the final model and nested submodels. It turned out that the R^2 values vary distinctly between the ALS acquisition year strata (Table 2). More precisely, the within-group R^2 can be higher and lower than the overall R^2 of the respective model. Figure 8 shows that a stratification according to the ALS acquisition years (*submodel 2*) can already increase the R^2 in most acquisition year strata, compared to the basic model using only the ALS height metrics as

Table 2 R^2 , RMSE and RMSE% of final regression model within ALS acquisition year strata (*ALSyear*)

<i>ALSyear</i>	$Area_{ALSyear}$	R^2	RMSE	RMSE%	<i>n</i>
2012	2807	0.61	135.84	44.87	408
2011	4361	0.57	146.21	48.29	883
2010	4182	0.51	120.90	39.93	1171
2009	2100	0.42	133.42	44.07	559
2008	2968	0.48	130.38	43.06	701
2008_1	2116	0.33	175.43	57.94	394
2007	3498	0.46	136.47	45.08	418
2003	602	0.27	154.48	51.02	529
2002	775	0.44	141.55	46.75	314

$Area_{ALSyear}$ area covered by ALS acquisition given in km². *n* number of validation data

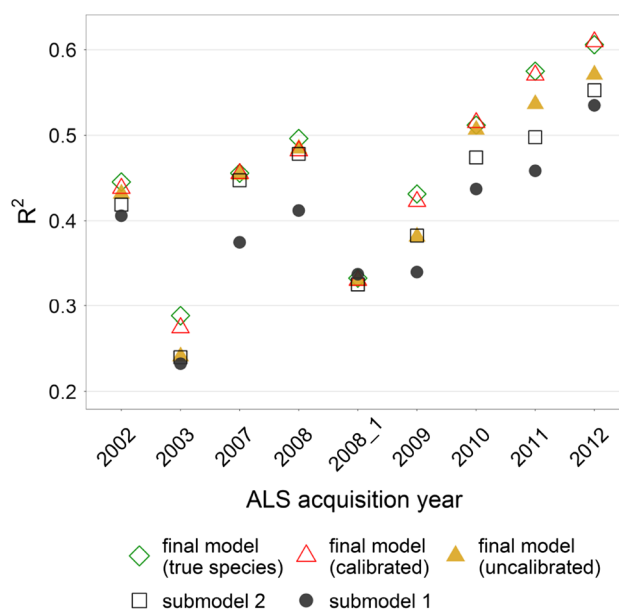


Fig. 8 R^2 -values of the final regression model, submodel 1 and submodel 2 achieved *within* the ALS acquisition year strata

predictor variables (*submodel 1*). In the ALS acquisition year stratum 2007, the increase in R^2 even reached 0.08.

Added value of tree species map information

Introducing the predicted main tree species of a sample plot as an additional categorical variable to submodel 2 yielded a further increase in the adjusted R^2 of 0.03 (Table 3). However, the improvement was even more pronounced in ALS acquisition years close or identical to the year of the terrestrial inventory (Fig. 8). We observed an increase of 0.06 in R^2 for ALS acquisition year 2012, and of 0.07 for ALS acquisition year 2011. The analysis illustrated once more that misclassifications in the tree species variable generally reduce model accuracy compared to using error-free tree

Table 3 Accuracy metrics for submodels of final OLS regression model

Model terms	Model	Parameters	R^2_{adj}	RMSE _{cv}	RMSE _{cv} %
Meanheight + stddev + meanheight ² + treespecies + ALSyear + meanheight:treespecies + meanheight:ALSyear + meanheight:stddev + stddev:ALSyear	Final model	39	0.48	140.62	46.69
Meanheight + stddev + meanheight ² + meanheight:stddev	Submodel 1	5	0.36	155.54	51.65
Meanheight + stddev + meanheight ² + ALSyear + meanheight:ALSyear + meanheight:stddev + stddev:ALSyear	Submodel 2	29	0.45	145.62	48.35
Meanheight + stddev + meanheight ² + treespecies + meanheight:treespecies + meanheight:stddev	Submodel 3	15	0.40	150.32	49.92

Interaction terms are indicated by “:”

species information. The residual inflations caused by the misclassifications in the uncalibrated *treespecies* variable within the *ALSyear* strata were up to 0.05 in R^2 . However, the calibration was able to substantially decrease or even remove the effects of misclassifications on the model accuracy in all ALS acquisition year strata.

Discussion

Stratification according to ALS acquisition years and tree species

Incorporating the main tree species of a sample location in the timber volume regression model increased the model accuracy and revealed strong evidence for the existence of a tree species-specific behavior concerning timber volume on the plot level. This result seems reasonable regarding the species-specific taper functions on single-tree level applied in the BWI3 (Kublin 2003; Kublin et al. 2013). These findings also agree with those of Latifi et al. (2012) who found an almost identical improvement in RMSE of 2% when stratifying to broadleaf and coniferous tree species. The overall RMSE of their model was, however, 10% smaller than in our study. This might be due to a more heterogeneous dataset of much smaller sample size in the cited study, but also because the temporal alignment between the auxiliary data acquisition and the terrestrial survey was much better than in our case. Additionally, the number of different tree species present in their dataset was lower than in our case and only comprised Scots pine, European beech and oak. The individual effects of spruce and Douglas fir indicated by our model also support the findings of Breidenbach et al. (2008), who found a higher percentage of coniferous trees in a sample plot to increase the timber volume predictions. This was not true for Scots pine and oak whose effects turned out to be very similar for our dataset. However, in our study the stratification according to the ALS acquisition years severely limited the flexibility of species-specific prediction functions and model interpretability. In

particular, using the ALS acquisition years as categorical variables led to highly unbalanced datasets when stratifying according to the main plot tree species. This prevented the use of further stratification variables such as bioclimatic growing regions due to confounding effects and consequent singularities in the design matrices. Using the ALS acquisition years as categorical variables also implied an artificial increase in the number of parameters in the OLS regression model, which was, however, not regarded as critical with respect to overfitting issues due to the high amount of observations used for fitting the regression coefficients (Draper and Smith 2014, Ch. 15.1). A stratification to the ALS acquisition years, however, proved to be an effective means in accounting for the artificially introduced noise in the data caused by quality variations and the large time lags between the remote sensing and terrestrial data. It allowed for a model accuracy that was very close to those reported by Maack et al. (2016) who conducted a very similar study in the German federal state of Baden-Württemberg. Model accuracies were also particularly higher in ALS acquisition year strata in which the data showed considerably less noise or were closer to the date of the terrestrial survey. This effect was significantly reduced or even removed when merging several ALS acquisition year strata. Promising steps with respect to more up-to-date canopy height information have already been made, as the topographic survey institution of RLP is currently processing a canopy height model from aerial imagery acquisitions for 2011 and 2012 covering the entire federal state. These aerial photography acquisitions will in the future be conducted in a 2-year period, allowing to derive up-to-date canopy height information in the framework of future forest inventories. For a smaller study area, Kirchhoefer et al. (2017) have already demonstrated that similar model accuracies for German NFI data can be achieved using imagery-based canopy height models.

Incorporating the calibrated tree species information further improved the model accuracy by 0.03 in adjusted R^2 . Compared to the simple model only containing ALS height metrics, including the ALS quality and calibrated tree species information increased the adjusted R^2 by 0.12 in total. A

differentiated evaluation of the final regression model revealed that the highest R^2 -values were achieved within ALS acquisitions year strata close or identical with the year of the terrestrial survey, showing differences of up to 0.3 between the R^2 s. Also the gain in R^2 by including the tree species information was largest (i.e., 0.07) in combination with ALS information acquired in the year of the terrestrial inventory. These insights were particularly interesting with respect to the further use of the regression model for small area estimation. Small area estimators generally gain modeling strength by defining the prediction model *globally* (i.e., using all data in the inventory area), and then applying the so-derived prediction model to a subset of observations located within the area of interest (Mandallaz 2013a). Consequently, the proposed stratification technique in the prediction model is expected to yield a gain in model accuracy and a reduction of the small area estimation errors if the small area domain mostly includes data from strata that have high within-strata model accuracies. Findings of Breidenbach et al. (2008) indicated that a further increase in model accuracies could possibly be achieved when incorporating these categorical variables as random rather than fixed-effects in linear mixed-effects models (Pineiro and Bates 2000). The reason we did not apply this family of models was that small area regression estimators subsequently applied in RLP (Mandallaz 2013a; Mandallaz et al. 2013) require the internal models to be fitted by OLS technique.

Calibration of tree species map information

The accuracy assessment of the initially derived main plot species from the classification map revealed the presence of misclassifications that led to a decrease in model accuracy. This is in agreement with the potential effects of erroneous explanatory variables discussed in Carroll et al. (2006) and Gustafson (2003), i.e., an increase in variability (noise) in the data that can increase the amount of unexplainable variance and thereby reduce the model accuracy. One reason for the misclassifications was that the classification algorithm of Stoffels et al. (2015) was exclusively trained in pure stands with the objective to predict the *dominant tree species* of a forest stand. Thus, our requirements on the classification map differed considerably from the ones imposed by Stoffels et al. (2015) and have to be considered as far more difficult to meet. Firstly, the reference data used in the accuracy assessment also included understory trees that were recorded in the BW13 sample. Secondly, determining an exact spatial validation unit for a sample location (support) is not possible due to the properties of angle count sampling (“Choice of support under angle count sampling” section). Thirdly, distinct discrepancies in the spatial scale between the reference data and the classification map severely hamper exact predictions of the main plot tree species, especially in mixed forest stands. The latter issue

caused a pronounced dependency of the user’s accuracy on the support and threshold choice, particularly for tree species that most commonly occur in mixed forest structures, i.e., *Scots pine* (91%), *oak* (90%) and *beech* (85%) (von Thünen-Institut 2014). With respect to this setup, the application of our calibration method proved to be of high value. It led to an increase in the classification accuracies, particularly for those tree species that performed worse in the uncalibrated setup, and thereby successfully minimized and even removed the deleterious effect of misclassifications on model accuracy and regression coefficients. Whereas the extensive analysis in our study deepened the understanding of the afore mentioned scale-effects, an alternative method for future applications could be to use map-derived percentages of each tree species as predictor variables in the random forest algorithm in order to directly predict the terrestrially observed main plot tree species.

Choice of support under angle count sampling

The validation of different support sizes underlined that the support choice can impact the accuracy of a prediction model and thus confirmed the findings of Deo et al. (2016). In the present study, differences in the model accuracies, however, turned out to be small for most support choices. An exception was the choice of the $q100$ support for the CHM-derived variables (38 m radius), where the model accuracy was considerably worse than under the optimal settings. Contrary to our hypothesis, the use of plot-individual supports did not yield the best prediction performance overall. Kirchhoefer et al. (2017) recently came to the same result when they transferred the angle count sampling technique to a pixelwise selection method of the auxiliary data that resembles the sample tree selection even more precisely. In their study, the application of fixed support sizes did also not perform worse than under variable supports. We consider two plausible reasons for the joint findings: First, the determination of an exact spatial extent that can be transferred to auxiliary data extraction remains technically infeasible under angle count sampling. Thus, angle count sampling does not seem to be adequate when linking inventory information with remote sensing data. Secondly, inaccuracies in the DGPS-measurements of the plot center locations as reported by Lamprecht et al. (2017) may have an increased impact on the model accuracy the more exact the auxiliary data derivation spatially corresponds to those of the field survey. However, the extensive analysis carried out in our study also indicated that the optimal support size does not only depend on the spatial extent of the field plots, but also on the spatial resolution of the remote sensing data as well as the context in which the derived information is used in the prediction model. In the case of transforming the tree species information map into a suitable categorical predictor

variable, the use of a large support size of 38 m radius turned out to yield the best model accuracy. However, only few sample locations in the study area were actually characterized by limiting circles of that particular size. An analysis to find the best support settings therefore seems to be advisable prior to further applications of design-based or model-dependent inventory methods so as not to lose model accuracy by unsuitable support choices. The concept of the demonstrated analysis method for identifying suitable supports can be transferred to any kind of auxiliary information, predictor variable and prediction model.

Conclusion

We draw three major conclusions from our study: (1) our analyses strongly indicated that the acquisition of auxiliary data close to the date of the terrestrial survey is a key factor to achieve good model accuracies. Particularly for large-scale inventory applications, this requirement is often difficult to meet. In such cases, we consider that the proposed method of including quality information about the auxiliary data in a prediction model can be an effective technique for improving the prediction accuracy. Ongoing studies investigate whether this modeling technique can also lead to smaller estimation errors of design-based estimators. (2) Our study also indicated that the relationship between the field-measured timber volume and remote sensing-derived height information is tree species specific. We expect that using the tree species information in a timber volume model would even lead to higher prediction accuracies when combined with explanatory variables that can further explain the variation within each tree species group, such as bioclimatic growing conditions, soil properties and stand density on the plot level. (3) We consider the demonstrated calibration technique to be a valuable method for future studies where an external tree species map (i.e., the map was not created for the specific study objective) is used in prediction models. The application of a calibration model can also be transferred to any error-prone explanatory variable and be a simple means to clean the dataset from noise and thus increase the model accuracy.

Acknowledgements We want to express our gratitude to Prof. H. Heinemann (Chair of Land Use Engineering, ETH Zurich) for supporting this study. We want to explicitly thank Dr. Johannes Stoffels from the Environmental Sensing and Geoinformatics Group of Trier University for providing the tree species classification map as well as for constructive discussions when it came to interpreting the results. Special gratitude is owed to the State Forest Service of Rhineland-Palatinate, in particular Dr. Joachim Langshausen, Jürgen Dietz and Claus-Andreas Lessander, for collaboration and providing the forest inventory and geodata. We also want to thank Dr. Kai Husmann and Dr. Christoph Fischer from the Northwest German Forest Research Institution Göttingen for their advice in processing the terrestrial inventory data, and

Dr. Alexander Massey and Michael Hill for proofreading. We also want to thank two anonymous reviewers for their valuable support to improve the manuscript.

Compliance with ethical standards

Conflict of interest The authors declare that they have no conflict of interest.

Open Access This article is distributed under the terms of the Creative Commons Attribution 4.0 International License (<http://creativecommons.org/licenses/by/4.0/>), which permits unrestricted use, distribution, and reproduction in any medium, provided you give appropriate credit to the original author(s) and the source, provide a link to the Creative Commons license, and indicate if changes were made.

References

- Akaike H (2011) Akaike's information criterion. Springer, Berlin, pp 25–25. https://doi.org/10.1007/978-3-642-04898-2_110
- Bitterlich W (1984) The relascope idea. Relative measurements in forestry. Commonwealth Agricultural Bureaux
- Bohlin J, Bohlin I, Jonzén J, Nilsson M (2017) Mapping forest attributes using data from stereophotogrammetry of aerial images and field data from the national forest inventory. *Silva Fennica*. <https://doi.org/10.14214/sf.2021>
- Breidenbach J, Astrup R (2012) Small area estimation of forest attributes in the Norwegian National Forest Inventory. *Eur J Forest Res* 131(4):1255–1267. <https://doi.org/10.1007/s10342-012-0596-7>
- Breidenbach J, Kublin E, McGaughey R, Andersen HE, Reutebuch SE (2008) Mixed-effects models for estimating stand volume by means of small footprint airborne laser scanner data. *Photogram J Finland* 21(1):4–15
- Breiman L (2001) Random forests. *Mach Learn* 45(1):5–32. <https://doi.org/10.1023/A:1010933404324>
- Brosfoske KD, Froese RE, Falkowski MJ, Banskota A (2014) A review of methods for mapping and prediction of inventory attributes for operational forest management. *Forest Sci* 60(4):733–756
- Bundesministerium für Ernährung und Landwirtschaft (2011) Aufnahmeanweisung für die dritte Bundeswaldinventur BWI3 (2011–2012). <https://www.bundeswaldinventur.de/index.php?id=421>
- Carroll RJ, Ruppert D, Stefanski LA, Crainiceanu CM (2006) Measurement error in nonlinear models: a modern perspective. CRC Press, London. <https://doi.org/10.1201/9781420010138>
- Congalton RG, Green K (2008) Assessing the accuracy of remotely sensed data: principles and practices. CRC Press, London. <https://doi.org/10.1201/9781420055139>
- Deo RK, Froese RE, Falkowski MJ, Hudak AT (2016) Optimizing variable radius plot size and LiDAR resolution to model standing volume in conifer forests. *Can J Remote Sens* 42(5):428–442. <https://doi.org/10.1080/07038992.2016.1220826>
- Draper NR, Smith H (2014) Applied regression analysis. Wiley, London
- Fahrmeir L, Kneib T, Lang S, Marx B (2013) Regression: models, methods and applications. Springer, Berlin. <https://doi.org/10.1007/978-3-642-34333-9>
- Gauer J, Aldinger E (2005) Waldökologische Naturräume Deutschlands-Wuchsgebiete. *Mitteilungen des Vereins für Forstliche Standortskunde und Forstpflanzenzüchtung* 43:281–288
- Gregoire TG, Valentine HT (2007) Sampling strategies for natural resources and the environment. CRC Press, London

- Gustafson P (2003) Measurement error and misclassification in statistics and epidemiology: impacts and Bayesian adjustments. CRC Press, London. <https://doi.org/10.1201/9780203502761>
- Hill A, Breschan J, Mandallaz D (2014) Accuracy assessment of timber volume maps using forest inventory data and lidar canopy height models. *Forests* 5(9):2253–2275. <https://doi.org/10.3390/f5092253>
- Hollaus M, Wagner W, Maier B, Schadauer K (2007) Airborne laser scanning of forest stem volume in a mountainous environment. *Sensors* 7(8):1559–1577. <https://doi.org/10.3390/s7081559>
- Husmann K, Rumpf S, Nagel J (2017) Biomass functions and nutrient contents of European beech, oak, sycamore maple and ash and their meaning for the biomass supply chain. *J Clean Prod*. <https://doi.org/10.1016/j.jclepro.2017.03.019>
- Jakubowski MK, Guo Q, Kelly M (2013) Tradeoffs between lidar pulse density and forest measurement accuracy. *Remote Sens Environ* 130:245–253. <https://doi.org/10.1016/j.rse.2012.11.024>
- Kirchhoefer M, Schumacher J, Adler P, Kändler G (2017) Considerations towards a novel approach for integrating angle-count sampling data in remote sensing based forest inventories. *Forests* 8(7):239
- Koch B (2010) Status and future of laser scanning, synthetic aperture radar and hyperspectral remote sensing data for forest biomass assessment. *ISPRS J Photogram Remote Sens* 65(6):581–590. <https://doi.org/10.1016/j.isprsjprs.2010.09.001>
- Köhl M, Magnussen SS, Marchetti M (2006) Sampling methods, remote sensing and GIS multiresource forest inventory. Springer, Berlin
- Kublin E (2003) Einheitliche beschreibung der schaftform-methoden und programme-bdatpro. *Forstwiss Cent* 122(3):183–200
- Kublin E, Breidenbach J, Kändler G (2013) A flexible stem taper and volume prediction method based on mixed-effects b-spline regression. *Eur J Forest Res* 132(5–6):983–997. <https://doi.org/10.1007/s10342-013-0715-0>
- Lamprecht S, Hill A, Stoffels J, Udelhoven T (2017) A machine learning method for co-registration and individual tree matching of forest inventory and airborne laser scanning data. *Remote Sens*. <https://doi.org/10.3390/rs9050505>
- Latifi H, Nothdurft A, Koch B (2010) Non-parametric prediction and mapping of standing timber volume and biomass in a temperate forest: application of multiple optical/lidar-derived predictors. *Forestry* 83(4):395–407. <https://doi.org/10.1093/forestry/cpq022>
- Latifi H, Nothdurft A, Straub C, Koch B (2012) Modelling stratified forest attributes using optical/lidar features in a central european landscape. *Int J Digit Earth* 5(2):106–132. <https://doi.org/10.1080/17538947.2011.583992>
- Liaw A, Wiener M (2002) Classification and regression by random forest. *R News* 2(3):18–22
- Maack J, Lingenfelder M, Weinacker H, Koch B (2016) Modelling the standing timber volume of Baden-Württemberg—a large-scale approach using a fusion of Landsat, airborne LiDAR and National Forest Inventory data. *Int J Appl Earth Obs Geoinform* 49:107–116. <https://doi.org/10.1016/j.jag.2016.02.004>
- Magnussen S, Næsset E, Gobakken T (2010) Reliability of lidar derived predictors of forest inventory attributes: a case study with Norway spruce. *Remote Sens Environ* 114(4):700–712. <https://doi.org/10.1016/j.rse.2009.11.007>
- Magnussen S, Mandallaz D, Breidenbach J, Lanz A, Ginzler C (2014) National forest inventories in the service of small area estimation of stem volume. *Can J For Res* 44(9):1079–1090. <https://doi.org/10.1139/cjfr-2013-0448>
- Mandallaz D (2008) Sampling techniques for forest inventories. CRC Press, London. <https://doi.org/10.1201/9781584889779>
- Mandallaz D (2013a) Design-based properties of some small-area estimators in forest inventory with two-phase sampling. *Can J For Res* 43(5):441–449. <https://doi.org/10.1139/cjfr-2012-0381>
- Mandallaz D (2013b) A three-phase sampling extension of the generalized regression estimator with partially exhaustive information. *Can J For Res* 44(4):383–388. <https://doi.org/10.1139/cjfr-2013-0449>
- Mandallaz D, Breschan J, Hill A (2013) New regression estimators in forest inventories with two-phase sampling and partially exhaustive information: a design-based Monte Carlo approach with applications to small-area estimation. *Can J For Res* 43(11):1023–1031. <https://doi.org/10.1139/cjfr-2013-0181>
- Massey A, Mandallaz D (2015) Design-based regression estimation of net change for forest inventories. *Can J For Res* 45(12):1775–1784. <https://doi.org/10.1139/cjfr-2015-0266>
- Massey A, Mandallaz D, Lanz A (2014) Integrating remote sensing and past inventory data under the new annual design of the Swiss National Forest Inventory using three-phase design-based regression estimation. *Can J For Res* 44(10):1177–1186. <https://doi.org/10.1139/cjfr-2014-0152>
- Mathworks (2017) Matlab version 9.2.0.538062 (r2017a)
- McRoberts RE, Tomppo EO, Næsset E (2010) Advances and emerging issues in national forest inventories. *Scand J For Res* 25(4):368–381. <https://doi.org/10.1080/02827581.2010.496739>
- McRoberts RE, Næsset E, Gobakken T, Bollandås OM (2015) Indirect and direct estimation of forest biomass change using forest inventory and airborne laser scanning data. *Remote Sens Environ* 164:36–42. <https://doi.org/10.1016/j.rse.2015.02.018>
- Næsset E (2014) Area-based inventory in norway—from innovation to an operational reality. In: Maltamo M, Næsset E, Vauhkonen J (eds) *Forest applications of airborne laser scanning—concepts and case studies*. Springer, Berlin, pp 216–240. <https://doi.org/10.1007/978-94-017-8663-8>
- Næsset E (1997) Estimating timber volume of forest stands using airborne laser scanner data. *Remote Sens Environ* 61(2):246–253. [https://doi.org/10.1016/S0034-4257\(97\)00041-2](https://doi.org/10.1016/S0034-4257(97)00041-2)
- Nink S, Hill J, Buddenbaum H, Stoffels J, Sachtleber T, Langshausen J (2015) Assessing the suitability of future multi- and hyperspectral satellite systems for mapping the spatial distribution of Norway spruce timber volume. *Remote Sens* 7(9):12009–12040. <https://doi.org/10.3390/rs70912009>
- Pinheiro J, Bates D (2000) *Mixed-effects models in S and S-PLUS*. Springer, Berlin. <https://doi.org/10.1007/b98882>
- R Core Team (2016) R: a language and environment for statistical computing. R Foundation for Statistical Computing, Vienna, Austria. <https://www.R-project.org/>
- Saborowski J, Marx A, Nagel J, Böckmann T (2010) Double sampling for stratification in periodic inventories—infinite population approach. *For Ecol Manag* 260(10):1886–1895. <https://doi.org/10.1016/j.foreco.2010.08.035>
- Schreuder HT, Gregoire TG, Wood GB (1993) *Sampling methods for multiresource forest inventory*. Wiley, New York
- Stoffels J, Hill J, Sachtleber T, Mader S, Buddenbaum H, Stern O, Langshausen J, Dietz J, Ontrup G (2015) Satellite-based derivation of high-resolution forest information layers for operational forest management. *Forests* 6(6):1982–2013. <https://doi.org/10.3390/f6061982>
- Straub C, Dees M, Weinacker H, Koch B (2009) Using airborne laser scanner data and cir orthophotos to estimate the stem volume of forest stands. *Photogram Fernerkund Geoinform* 2009(3):277–287. <https://doi.org/10.1127/0935-1221/2009/0022>
- Tonolli S, Dalponte M, Vescovo L, Rodeghiero M, Bruzzone L, Gianelle D (2011) Mapping and modeling forest tree volume using forest inventory and airborne laser scanning. *Eur J Forest Res* 130(4):569–577. <https://doi.org/10.1007/s10342-010-0445-5>
- von Lüpke N, Saborowski J (2014) Combining double sampling for stratification and cluster sampling to a three-level sampling design

- for continuous forest inventories. *Eur J Forest Res* 133(1):89–100. <https://doi.org/10.1007/s10342-013-0743-9>
- von Thünen-Institut (2014) Dritte Bundeswaldinventur 2012. <https://bwi.info>. Accessed 3 Feb 2017
- White JC, Coops NC, Wulder MA, Vastaranta M, Hilker T, Tompalski P (2016) Remote sensing technologies for enhancing forest inventories: a review. *Can J Remote Sens* 42(5):619–641. <https://doi.org/10.1080/07038992.2016.1207484>
- Zianis D, Muukkonen P, Mäkipää R, Mencuccini M, et al (2005) Biomass and stem volume equations for tree species in Europe. *Silva Fennica Monographs* 4