




Correction to: A multicenter propensity score analysis of FOLFIRINOX vs gemcitabine plus *nab*-paclitaxel administered to patients with metastatic pancreatic cancer: results from the NAPOLEON study

Taiga Otsuka^{1,2} · Tsuyoshi Shirakawa^{3,4}  · Mototsugu Shimokawa^{5,6} · Futa Koga⁷ · Yasunori Kawaguchi^{7,8} · Yujiro Ueda⁹ · Junichi Nakazawa¹⁰ · Azusa Komori¹¹ · Satoshi Otsu¹¹ · Shiho Arima¹² · Masaru Fukahori¹³ · Yoshinobu Okabe¹³ · Akitaka Makiyama^{14,15} · Hiroki Taguchi^{16,17} · Takuya Honda¹⁸ · Taro Shibuki^{19,20} · Kenta Nio²¹ · Yasushi Ide²² · Toshihiko Mizuta^{19,23} · Kenji Mitsugi²⁴ · Norio Ureshino^{1,25}

Published online: 3 March 2021
© Japan Society of Clinical Oncology 2021

Correction to: International Journal of Clinical Oncology
<https://doi.org/10.1007/s10147-021-01859-2>

In the original publication, Fig. 3 has been published incorrectly. The correct version of Fig. 3 is given in this Correction.

The original article can be found online at <https://doi.org/10.1007/s10147-021-01859-2>.

✉ Tsuyoshi Shirakawa
twriver1979@gmail.com

Extended author information available on the last page of the article

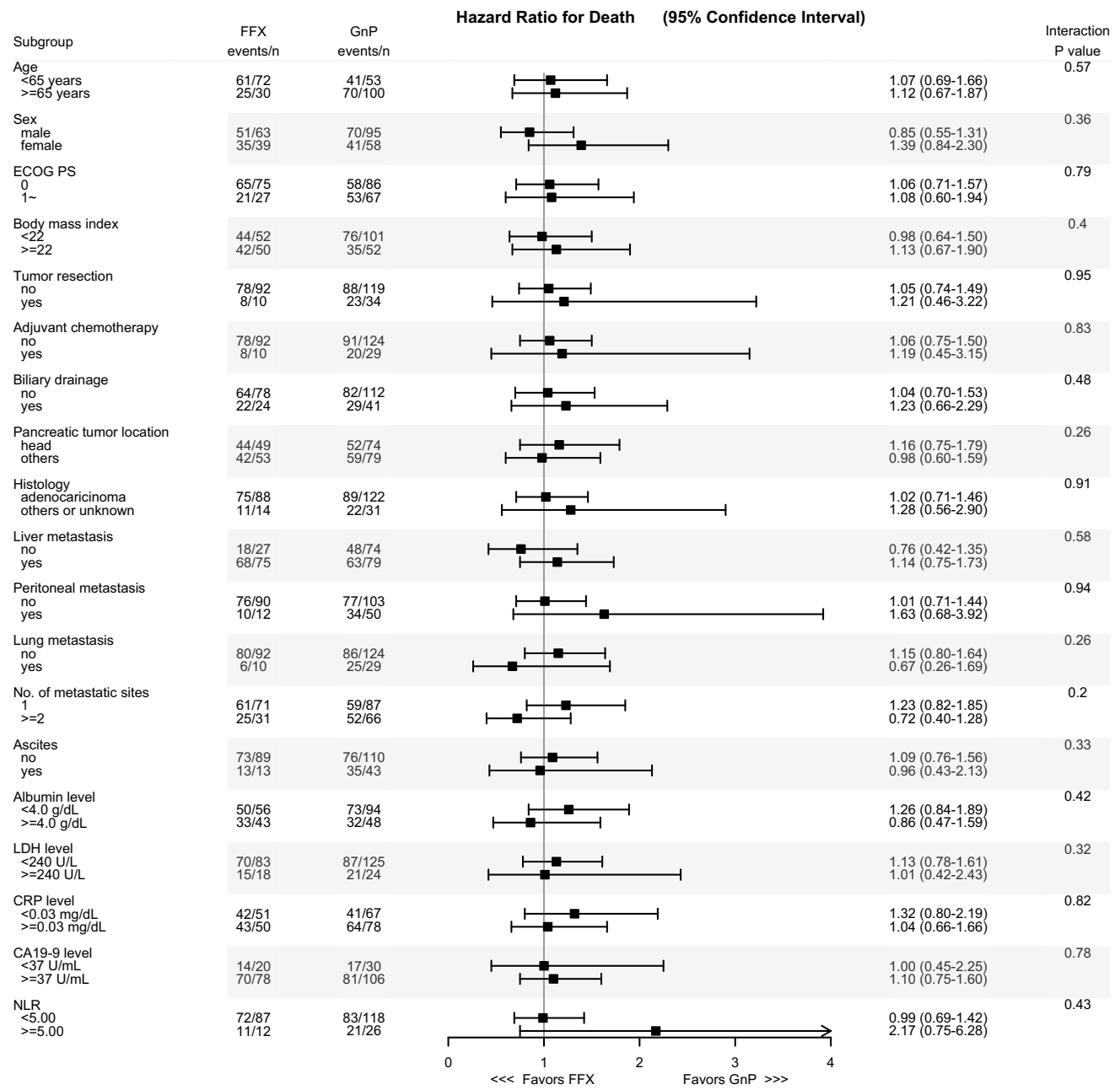



Fig. 3 Hazard ratios for overall survival of patient subgroups according to pretreatment characteristics in the propensity score-adjusted dataset. *FFX* FOLFIRINOX, *GnP* gemcitabine plus nab-paclitaxel,

ECOG PS Eastern Cooperative Oncology Group performance status, *LDH* lactate dehydrogenase, *CRP* C-reactive protein, *CA19-9* carbohydrate antigen 19–9, *NLR* neutrophil-to-lymphocyte ratio

Publisher’s Note Springer Nature remains neutral with regard to jurisdictional claims in published maps and institutional affiliations.

Affiliations

Taiga Otsuka^{1,2} · Tsuyoshi Shirakawa^{3,4}  · Mototsugu Shimokawa^{5,6} · Futa Koga⁷ · Yasunori Kawaguchi^{7,8} · Yujiro Ueda⁹ · Junichi Nakazawa¹⁰ · Azusa Komori¹¹ · Satoshi Otsu¹¹ · Shiho Arima¹² · Masaru Fukahori¹³ · Yoshinobu Okabe¹³ · Akitaka Makiyama^{14,15} · Hiroki Taguchi^{16,17} · Takuya Honda¹⁸ · Taro Shibuki^{19,20} · Kenta Nio²¹ · Yasushi Ide²² · Toshihiko Mizuta^{19,23} · Kenji Mitsugi²⁴ · Norio Ureshino^{1,25}

¹ Department of Medical Oncology, Saga Medical Center Koseikan, 400 Kase-machi, Saga-shi, Saga 840-8571, Japan

² Department of Internal Medicine, Minato Medical Clinic, 3-11-3 Nagahama, Chuo-ku, Fukuoka-shi, Fukuoka 810-0072, Japan

³ Department of Medical Oncology, Fukuoka Wajiro Hospital, 2-2-75 Wajirogaoka, Higashi-ku, Fukuoka-shi, Fukuoka 811-0213, Japan

⁴ Karatsu Higashi-Matsuura Medical Association Center, 2566-11 Chiyoda-machi, Karatsu-shi, Saga 847-0041, Japan

⁵ Clinical Research Institute, National Kyushu Cancer Center, 3-1-1 Notame, Minami-ku, Fukuoka-shi, Fukuoka 811-1395, Japan

⁶ Department of Biostatistics, Yamaguchi University Graduate School of Medicine, 1-1-1 Minamikogushi, Ube-shi, Yamaguchi 755-8505, Japan

⁷ Department of Hepatobiliary and Pancreatology, Saga Medical Center Koseikan, 400 Kase-machi, Saga-shi, Saga 840-8571, Japan

⁸ Department of Gastroenterology, Asakura Medical Association Hospital, 422-1 Raiha, Asakura-shi, Fukuoka 838-0069, Japan

⁹ Department of Hematology and Oncology, Japanese Red Cross Kumamoto Hospital, 2-1-1 Nagamine Minami, Higashi-ku, Kumamoto-shi, Kumamoto 861-8520, Japan

¹⁰ Department of Medical Oncology, Kagoshima City Hospital, 37-1 Uearata-cho, Kagoshima-shi, Kagoshima 890-8760, Japan

¹¹ Department of Medical Oncology and Hematology, Oita University Faculty of Medicine, 1-1 Idaigaoka, Hasama-machi, Yufu-shi, Oita 879-5593, Japan

¹² Digestive and Lifestyle Diseases, Kagoshima University Graduate School of Medical and Dental Sciences, 8-35-1 Sakuragaoka, Kagoshima-shi, Kagoshima 890-8520, Japan

¹³ Department of Internal Medicine, Division of Gastroenterology, Kurume University Hospital, 67 Asahi-machi, Kurume-shi, Fukuoka 830-0011, Japan

¹⁴ Department of Hematology/Oncology, Japan Community Healthcare Organization Kyushu Hospital, 1-8-1 Kishinoura, Yahatanishi-ku, Kitakyushu-shi, Fukuoka 806-8501, Japan

¹⁵ Cancer Center, Gifu University Hospital, 1-1 Yanagido, Gifu-shi, Gifu 501-1194, Japan

¹⁶ Department of Gastroenterology, Saiseikai Sendai Hospital, 2-46 Harada-cho, Satsumasendai-shi, Kagoshima 895-0074, Japan

¹⁷ Department of Gastroenterology, Izumi General Medical Center, 520 Myojin-cho, Izumi-shi, Kagoshima 899-0131, Japan

¹⁸ Department of Gastroenterology and Hepatology, Nagasaki University Graduate School of Biomedical Sciences, 1-7-1 Sakamoto, Nagasaki-shi, Nagasaki 852-8501, Japan

¹⁹ Department of Internal Medicine, Imari Arita Kyoritsu Hospital, Saga, 860 Ninose-ko, Arita-cho, Nishi-matsuura-gun, Saga 849-4193, Japan

²⁰ Department of Hepatobiliary and Pancreatic Oncology, National Cancer Center Hospital East, 6-5-1 Kashiwanoha, Kashiwa-shi, Chiba 277-8577, Japan

²¹ Department of Medical Oncology, Sasebo Kyosai Hospital, 10-17 Shimanji-cho, Sasebo-shi, Nagasaki 857-8575, Japan

²² Department of Internal Medicine, Karatsu Red Cross Hospital, 2430 Watada, Karatsu-shi, Saga 847-8588, Japan

²³ Department of Internal Medicine, Fujikawa Hospital, 1-2-6 Matsubara, Saga-shi, Saga 840-0831, Japan

²⁴ Department of Medical Oncology, Hamanomachi Hospital, 3-3-1 Nagahama, Chuo-ku, Fukuoka-shi, Fukuoka 810-8539, Japan

²⁵ Department of Medical Oncology, Kimitsu Chuo Hospital, 1010 Sakurai, Kisarazu-shi, Chiba 292-8535, Japan