

H. Fjeldsøe-Nielsen · M. Unemo · H. Fredlund ·
S. V. Hjorth · L. M. Berthelsen · H. M. Palmer ·
A. Friis-Møller

Phenotypic and genotypic characterization of prolyliminopeptidase-negative *Neisseria gonorrhoeae* isolates in Denmark

Published online: 21 June 2005
© Springer-Verlag 2005

Eur J Clin Microbiol Infect Dis (2005) 24:280–283

Figure 1b was omitted from the print version. The complete figure is given here.

The online version of the original article can be found at
<http://dx.doi.org/10.1007/s10096-005-1319-5>

H. Fjeldsøe-Nielsen · A. Friis-Møller (✉)
Department of Clinical Microbiology, H:S Hvidovre Hospital,
Kettegaard allé 30,
2650 Hvidovre, Denmark
e-mail: alice.friis-moeller@hh.hosp.dk
Tel.: +45-36322411
Fax: +45-36323357

M. Unemo · H. Fredlund
Swedish *Neisseria gonorrhoeae* Reference Laboratory,
Department of Clinical Microbiology, Örebro University
Hospital,
70185 Örebro, Sweden

S. V. Hjorth · L. M. Berthelsen
Danish *Neisseria gonorrhoeae* Reference Laboratory,
Department of Bacteriology, Mycology and Parasitology,
Statens Serum Institut,
Artillerivej 5,
2300 Copenhagen S, Denmark

H. M. Palmer
Scottish *Neisseria gonorrhoeae* Reference Laboratory,
Department of Clinical Microbiology, Royal Infirmary of
Edinburgh,
Little France, Edinburgh, EH16 4SA Scotland, UK

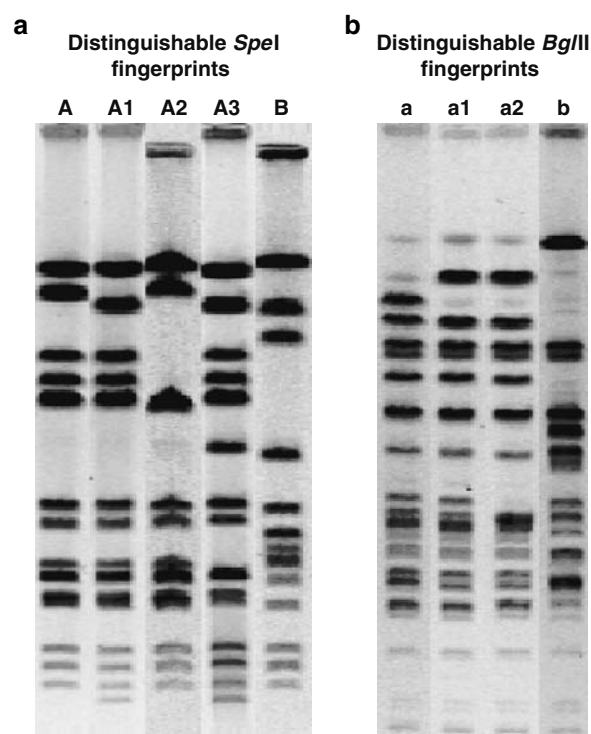


Fig. 1a, b One representative of each distinguishable PFGE-fingerprint, using *SpeI* ($n=5$) and *BglII* ($n=4$), of prolyliminopeptidase (PIP)-negative isolates of *N. gonorrhoeae* collected in Denmark (2002–2003, $n=26$) and the UK (2000–2002, $n=3$)