

The influence of cognitive status on outcome and walking ability after hemiarthroplasty for femoral neck fracture: a prospective cohort study

Sebastian Mukka¹ · Björn Knutsson¹ · Ferid Krupic² · Arkan S. Sayed-Noor¹

Received: 16 September 2016 / Accepted: 17 October 2016 / Published online: 31 October 2016
© The Author(s) 2016. This article is published with open access at Springerlink.com

Abstract

Introduction Femoral neck fracture (FNF) is a devastating injury with serious medical and social consequences. One-third of these patients have some degree of impaired cognitive status. Despite this, a high proportion of hip fracture trials exclude patients with cognitive impairment (CI). We aimed to evaluate whether moderate to severe CI could predict walking ability, quality of life, functional outcome, reoperations and mortality in elderly patients with displaced FNF treated with hemiarthroplasty (HA).

Methods This cohort study included a consecutive series of 188 patients treated with HA for a displaced FNF. Patients were assessed for estimated preoperative and 1 year post-operatively with regard to walking ability, cognitive status, quality of life with EQ-5D and hip function with Harris hip score.

Results There were 188 patients who met the inclusion criteria. A total of 130 patients were in the control group, and 58 were in the CI group. At 1-year follow-up, 31 patients (24%) had died in the control group and 22 patients (38%) had died in the cognitive impaired group. This difference in reoperation and mortality rate was statistically significant (log-rank test, $p = 0.016$). The CI had a significantly higher incidence of being non-walker (28 vs. 4%, OR 9.2, $p = 0.001$). The EQ-5D was higher in the control group, while the Harris hip score was comparable in the two groups.

Conclusions Moderate to severe CI was associated with a high incidence of non-walking ability, worse quality of life, high mortality and re-operation rate after femoral neck fractures treated with HA.

Keywords Hip fracture · Femoral neck fracture · Hemiarthroplasty · Cognitive status · Outcome

Introduction

Femoral neck fracture (FNF) is a devastating injury with serious medical and social consequences. Due to our aging population, the FNF incidence is high and expected to double by 2040 [1]. At least one-third of these patients have some degree of impaired cognitive status (CI) [2]. The occurrence of the fracture itself may worsen this impairment, while the presence of CI complicates the postoperative convalescence and rehabilitation. Despite this mutual negative affection, a high proportion of hip fracture trials excluded or ignored patients with CI and therefore missed an opportunity to study outcomes and identify factors associated with improved prognosis [2]. Also, patients with CI may receive less optimal treatment and rehabilitation than lucid patients although previous studies have demonstrated that mild to moderate CI does not compromise the functional gain from tailored inpatient rehabilitation during the first year after the fracture [3].

The assessment of cognitive status in FNF patients is not an easy task, especially during the acute phase when they suffer from both the fracture pain and the analgesics side effects. The assessment should therefore be undertaken using a standardized validated instrument. Parker and Palmer, for instance, assessed 882 patients with hip fractures by a new mobility score and by a mental test score, to

✉ Arkan S. Sayed-Noor
arkansam@hotmail.com

¹ Department of Surgical and Perioperative Science, Umeå University, 901 87 Umeå, Sweden

² Department of Orthopaedics, Institute of Clinical Sciences, University of Gothenburg, Gothenburg, Sweden

determine which was of the most value in forecasting mortality at 1 year. Both scores gave a highly significant prediction, but the mobility score had a greater predictive value and is easier to perform [4]. Recently, this score has been further refined to determine the linear progression of functional regain and mortality prediction after hip fractures, as well as being used in research and audit studies [5]. Another commonly used test is the short portable mental status questionnaire (SPMSQ), which has been found to be useful in predicting mortality [6, 7].

In this study, we sought to evaluate whether moderate to severe CI, assessed with SPMSQ, could predict walking ability, quality of life, functional outcome, reoperations and mortality in elderly patients with a FNF treated with hemiarthroplasty (HA).

Patients and methods

The study was conducted according to the Helsinki Declaration, and the local ethics committee approved the protocol.

In this prospective observational study, patients with a displaced FNF treated with a cemented HA Lubinus SPII® (Link, Hamburg, Germany) between February 2012 and July 2014 at the Department of Orthopaedics at Sundsvall Teaching Hospital, Sweden, were considered for inclusion. Patients treated using other implants, pathological fractures, bilateral FNF fractures during the study period and hip arthroplasty for a failed internal fixation as well as bed-ridden patients were excluded. Patients were operated through either the direct lateral or the posterolateral approach.

Before the operation, patients' baseline status was assessed for the last week before the fracture, in a retrospective rating, using the SPMSQ for the cognitive status (0–2 severe CI, 3–5 moderate CI, 6–7 mild CI and 8–10 no CI), the EQ-5D for the quality of life (–0.59 point indicates the worst possible quality of life, and 1.0 indicates the best possible quality of life) and the Harris hip score (HHS) for the hip function (0 point indicates the worst hip function, and 100 points indicate the best hip function) [8, 9]. In patients with SPMSQ score of less than 6, all clinical variables except cognitive status were assessed by means of a report from a close relative or nursing home staff as described and used by Blomfeldt et al. [10].

Data were collected regarding surgical approach, comorbidities registered at primary surgery by the American Society of Anaesthesiologists (ASA) score, early and late postoperative complications and re-operation, length of hospital stay and perioperative mortality.

An independent research nurse assessed all clinical variables at 1-year follow-up. Patients were reviewed with

regard to walking ability (yes/no), quality of life with EQ-5D and hip function with HHS. The reoperation rate and 1-year mortality were identified in the hospital medical records and Swedish hip arthroplasty registry using the patient's unique Swedish personal ID number [11].

According to the SPMSQ score, we divided the cohort into two groups. The group of patients with SPMSQ score of less than 6 was considered as moderate to severe CI group, while the group of patients with SPMSQ score of 6 or more was considered as no or mild CI. The former group will be called the CI group, while the latter group will be called the control group through the rest of the article. We compared the results of these two groups to evaluate whether moderate to severe CI could predict the ability to walk, quality of life, functional outcome and mortality.

Statistical methods

The statistical analysis was performed with use of SPSS 22.0 for Mac software (SPSS, Chicago, IL).

Sample size was calculated based on comparing the EQ-5D of each group. With a power of 0.80 and a significance level (alpha) of 0.05, a minimum of 35 patients at follow-up were needed in each group to detect a clinically significant 40% EQ-5D reduction in the CI group.

We used Mann–Whitney *U* test to compare the ordinal and continuous variables and the Chi-square test to compare the nominal variables between the two groups. All tests were two-sided. Linear regression was used to adjust for possible confounders such as age, gender and ASA category (1–2 or 3–4) and determine factors affecting the HHS and EQ-5D. A logistic regression was performed to evaluate factors affecting walking ability, while a Cox regression analysis was performed to evaluate factors affecting mortality. The results were considered significant at $p < 0.05$.

Results

There were 188 patients who met the inclusion criteria. According to the SPMSQ, 130 patients were in the control group and 58 were in the CI group. The patients' baseline characteristics of the two groups are presented in Table 1 and show no differences with regard to age, sex, operated side, surgical approach, ASA class (1–2 or 3–4) or length of hospital stay. However, patients of the CI group had worse preoperative HHS and EQ-5D.

At 1-year follow-up, 31 patients (24%) had died in the control group leaving 99 patients in this group and 22 patients (38%) had died in the CI group leaving 36 patients in this group available. This difference in mortality was statistically significant (log-rank test, $p = 0.016$, Fig. 1).

Table 1 Baseline characteristics of the two groups

	Control group <i>n</i> = 130	Cognitive impairment group <i>n</i> = 58	
Age	84.2 (SD 6.1)	84.9 (SD 5.6)	<i>p</i> = 0.46
Sex			
Male	36 (27.7%)	21 (36.2%)	<i>p</i> = 0.24
Female	94 (72.3%)	37 (63.8%)	
Side			
Right	65 (50.0%)	28 (48.3%)	<i>p</i> = 0.83
Left	65 (50.0%)	30 (51.7%)	
Approach			
Direct lateral	74 (56.9%)	32 (55.2%)	<i>p</i> = 0.82
Posterolateral	56 (43.1%)	26 (44.8%)	
ASA			
1–2	65 (50.0%)	24 (41.4%)	<i>p</i> = 0.27
3–4	65 (50.0%)	34 (58.6%)	
Preop HHS	83.8 (SD 11.4)	77.2 (SD 13.5)	<i>p</i> = 0.01
Preop EQ-5D	0.84 (SD 0.23)	0.62 (SD 0.33)	<i>p</i> = 0.001
Length of hospital stay (days)	13.3 (SD 8.7)	12.2 (SD 11.2)	<i>p</i> = 0.49

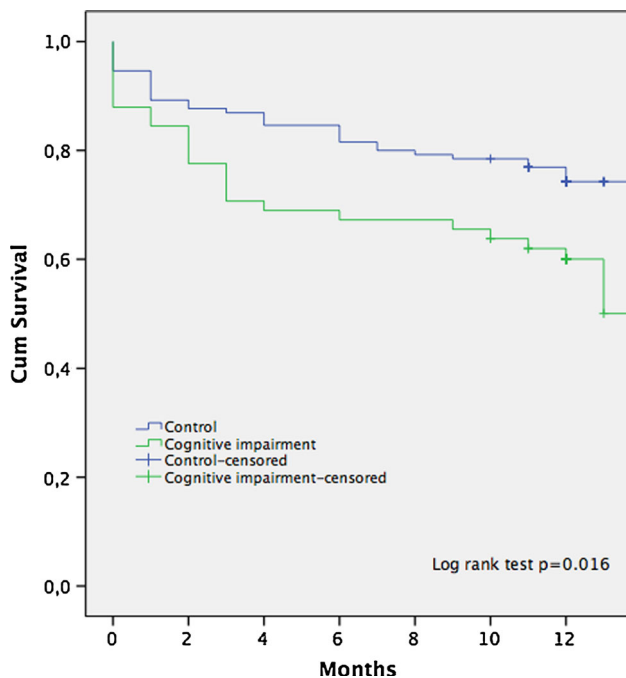


Fig. 1 Kaplan–Meier graph comparing mortality between the groups

The adjusted Cox regression analysis showed that there was an increased mortality (with tendency to be statistically significant) during the study period in the CI group [HR 1.66 (95% CI 0.99–2.81), *p* = 0.06]. Higher age was also associated with a higher mortality [HR 1.08 (95% CI 1.03–1.13), *p* = 0.001] (Table 2).

Regarding walking ability, the CI group had a significantly higher incidence of being non-walker [28 vs. 4%,

Table 2 Mortality at 1-year follow-up

Variable	HR	2.5–97.5%
Cognitive status		
Control	1.00	Ref
Cognitive impairment	1.66	0.99–2.81, <i>p</i> = 0.06
Age	1.08	1.03–1.13, <i>p</i> = 0.001
Sex		
Male	1.00	Ref
Female	0.81	0.47–1.40, <i>p</i> = 0.46
ASA		
1–2	1.00	Ref
3–4	1.04	0.62–1.75, <i>p</i> = 0.89

Cox proportional hazard including adjusted variables and presented as hazard ratio

The bold value is significant at *p* < 0.05

OR 9.2 (95% CI 2.63–32.7), *p* = 0.001]. The logistic regression analysis showed the CI status to be the only factor that results in becoming non-walker (Table 3). The EQ-5D was higher in the control group (control group vs. cognitive impairment group, 0.70 vs. 0.46, *p* = 0.001), while the HHS was comparable in the two groups (control group vs. cognitive impairment group, 73 vs. 67, *p* = 0.135). The regression analysis showed the control group cognitive status and preoperative HHS and EQ-5D to be the only factors that improved EQ-5D (Table 4).

We also found a significant difference in reoperation rate between the groups in favor of the control group (Table 5).

Table 3 Risk for postoperative non-walker

Variable	Non-walker	
	OR	2.5–97.5%
Surgical approach		
Posterolateral	1.00	Ref
Direct lateral	1.37	0.40–4.74, $p = 0.61$
Cognitive status		
Control group	1.00	Ref
Cognitive impairment	9.20	2.63–32.17, $p = \mathbf{0.001}$
Age	0.99	0.90–1.10, $p = 0.89$
Sex		
Male	1.00	Ref
Female	1.05	0.28–3.95, $p = 0.94$
ASA		
1–2	1.00	Ref
3–4	1.12	0.34–3.72, $p = 0.86$

Logistic regression presenting adjusted odds ratio

The bold value is significant at $p < 0.05$

Discussion

This study showed that moderate to severe CI, compared to no or mild CI, was associated with higher risk of becoming non-walker, worse quality of life, higher mortality and higher re-operation rate after FNF treated with HA. However, the overall 1-year hip function in both groups was comparable.

There is paucity in the literature regarding the evaluation of FNF outcome in CI patients. In a systematic review, Mundi et al. [2] showed that these patients were seldom included (26%) and rarely the focus (1%) of RCTs

Table 5 Re-operation in the two groups

	Control group ($n = 130$)	Cognitive impairment ($n = 58$)
Excision arthroplasty due to dislocation	0	1
THA with dual mobility cup due to dislocation	4	1
Surgical debridement due to deep infection	3	6
Excision arthroplasty due to deep infection	0	2
Open reduction and internal fixation of periprosthetic fracture	1	0
Secondary total hip arthroplasty due to acetabular erosion	1	0
Number of hips with re-operation ^a	9 (6.9%)	10 (13.8%)

^a Adjusted OR 3.16 (95% CI 1.17–8.55), $p = 0.02$

evaluating operative FNF management. Only 3% of the included studies had reported outcomes specific to CI patients. Their conclusion criticized the external validity of the existing evidence and called for inclusion of patients with CI to identify interventions that improve survival and function in this patient population.

The most suitable treatment option for displaced FNF in patients with CI has been a matter of debate. Some clinicians consider this group of patients as a high-risk group with low functional demand, therefore recommend fracture reduction and screw fixation for instance and found that HA in demented patients was a too major operation and less invasive methods of internal fixation should be considered [12]. Others have reported better postoperative

Table 4 Outcome variables

Variable	EQ-5D		HHS	
	OR	2.5–97.5%	OR	2.5–97.5%
Surgical approach				
PL approach	1.00	Ref	1.00	Ref
DL approach	−0.03	−0.15 to 0.10, $p = 0.65$	−0.40	−6.3 to 5.7, $p = 0.92$
Cognitive status				
Cognitive impairment	1.00	Ref	1.00	Ref
Control group	0.22	0.08–0.35, $p = \mathbf{0.002}$	4.65	−2.24 to 11.53, $p = 0.18$
Age	−0.02	−0.02 to 0.001, $p = 0.06$	−0.21	−0.74 to 0.33, $p = 0.44$
Sex				
Male	1.00	Ref	1.00	Ref
Female	0.06	−0.07 to 0.19, $p = 0.43$	1.02	−4.9 to 8.5, $p = 0.59$
ASA				
1–2	1.00	Ref	0.00	Ref
3–4	−0.07	−0.19 to 0.05, $p = 0.26$	0.07	−6.2 to 6.4, $p = 0.98$
Preop EQ-5D/HHS	0.16	−0.69 to 0.39, $p = 0.17$	0.34	0.08 to 0.6, $p = \mathbf{0.01}$

Linear regression including adjusted variables for HHS and EQ-5D

The bold value is significant at $p < 0.05$

walking ability and functional outcome with HA, even in the presence of severe CI [13–16]. As per our department's guidelines, we treated all patients with displaced FNF, regardless of cognitive status, with hip arthroplasty as far as no medical contra-indication existed.

We chose the SPMSQ score to determine the cognitive status. This score was previously found quick, easy to administer and reliable. It has also been validated as having a similar sensitivity and specificity to the Mini-Mental State Examination and as a severity-rating instrument [17–19].

We think the cutoff value of <6 (moderate to severe CI) and ≥ 6 (no to mild CI) was a suitable one since it differentiated between the group of lucid patients and patients with mild CI caused by mild dementia or secondary to the influence of the fracture and its management with analgesics and hospital admission and the group of patients with more prominent CI most likely caused by moderate to severe dementia [20].

Our results showed similar baseline characteristics of the control and CI groups. However, patients of the CI group had worse preoperative HHS and EQ-5D (Table 1). The latter finding concurs with those reported by Söderqvist et al. [21]. Postoperatively, the mortality was significantly higher in the CI group at 1-year follow-up. When adjusting for possible predictive factors, older age was significantly associated with a higher mortality. CI showed a tendency to give a higher mortality, although this did not reach a statistical significance [HR 1.66 (95% CI 0.99–2.81), $p = 0.06$] (Table 2). These results are in agreement with those reported by others including those who used SPMSQ score <3 as a cutoff value, i.e., compared patients with severe CI with others [21, 22].

The quality of life at 1-year follow-up, as evaluated by EQ-5D, showed better results in the control group. No other factor influenced the EQ-5D, apart from age, which only showed a tendency for influence [OR -0.02 (95% CI -0.02 to 0.001), $p = 0.07$]. Parsons et al. [23] found that EQ-5D could be used to measure outcome for patients recovering from hip fracture, including those with CI. The same group of researchers reported that there was strong evidence that quality of life was lower for patients with CI [24]. Söderqvist et al. [20] made the same observation founding a lower EQ-5D in patients with severe CI group both preoperatively and 1-year postoperatively. This difference in quality of life is probably related to the general physical and mental status of patients of the two groups.

The present study showed no statistically significant difference in the functional outcome, as evaluated by HHS, between the two groups at 1-year follow-up. On the other hand, CI was the only predictive factor that associated being non-walker at 1-year follow-up. More than one out of four patients alive at the 1-year follow-up with CI were a non-walker. The comparative number of the lucid patients was 4%. This deterioration in walking ability was also found by

other studies. Muir et al. [25], for instance, reported in their systematic review that the presence of CI adversely affected walking ability and function, mainly in patients treated surgically with internal fixation after femoral neck fracture and not (or to a much lesser extent) in patients treated with HA. They recommended intensive inpatient rehabilitation for these patients to reach comparable gains as with lucid patients. This is important not just for the individual but also for the society as a wheelchair or bedridden patient demands a higher level of assistance on the daily basis.

We determined a higher re-operation risk in the CI group mainly due to surgical debridement of deep infection [adjusted OR 3.16 (95% CI 1.17–8.55) $p = 0.02$]. Similarly, Strömberg et al. [20] found that CI was associated with an increased complication rate, e.g., a three-fold increase of early FNF displacement and a fourfold increase of wound infection. This increased risk was present even in patients with mild to moderate CI and could not entirely be explained by age. The increased rate of infection and dislocation further contributes to the higher mortality in the CI group [26]. Furthermore, Mariconda et al. [27] found that comorbidities and poor cognitive status could determine the likelihood of early and delayed general complications, respectively. In contrast to these observations, Lapidus et al. [28] found that age, gender, cognitive function, ASA classification, or the time to surgery had no influence on reoperation risk due to fracture healing complication.

The present study has some limitations. The 1-year follow-up time is relatively short. We think that the short-term follow-up is the most important in FNF patients owing to their high complication rate and mortality during the first postoperative year. The used HHS and EQ-5D scores have some disadvantages, e.g., the ceiling effect that could mask some of the differences among patients. Finally, we did not evaluate the effect of rehabilitation on the outcome in different groups and therefore cannot approximate if such an effect existed. These limitations are compensated by the strengths of the study, which is a prospective cohort study with consecutive patients, adequate sample size, minimal dropout and enlightening an important and increasing group of patients, which often are excluded from research studies. An independent nurse conducted the follow-up in all patients, minimizing potential bias. These factors improve the generalizability of the results.

In conclusion, moderate to severe CI, compared to no or mild CI, was associated with a high incidence of non-walking abilities, worse quality of life, higher mortality and a higher re-operation rate after FNF treated with HA, compared to the patients with mild or no cognitive impairment. Future studies could focus on how we can improve the walking abilities and decrease the mortality among patients with cognitive impairment after arthroplasty for a displaced FNF.

Compliance with ethical standards

Conflict of interest Each author clarifies that he has no conflicts of interest in relation to the conduction or publication of this study. No financial support was received.

Ethical approval All procedures performed in studies involving human participants were in accordance with the ethical standards of the institutional and/or national research committee and with the 1964 Helsinki Declaration and its later amendments or comparable ethical standards.

Informed consent Informed consent was obtained from all individual participants included in the study.

Open Access This article is distributed under the terms of the Creative Commons Attribution 4.0 International License (<http://creativecommons.org/licenses/by/4.0/>), which permits unrestricted use, distribution, and reproduction in any medium, provided you give appropriate credit to the original author(s) and the source, provide a link to the Creative Commons license, and indicate if changes were made.

References

- Cummings SR, Rubin SM, Black D (1990) The future of hip fractures in the United States. Numbers, costs, and potential effects of postmenopausal estrogen. *Clin Orthop Relat Res* 252:163–166
- Mundi S, Chaudhry H, Bhandari M (2014) Systematic review on the inclusion of patients with cognitive impairment in hip fracture trials: a missed opportunity? *Can J Surg* 57(4):E141–E145 (Review)
- Salpakoski A, Törmäkangas T, Edgren J, Kallinen M, Sihvonen SE, Pesola M et al (2014) Effects of a multicomponent home-based physical rehabilitation program on mobility recovery after hip fracture: a randomized controlled trial. *J Am Med Dir Assoc* 15(5):361–368
- Parker MJ, Palmer CR (1993) A new mobility score for predicting mortality after hip fracture. *J Bone Joint Surg Br* 75(5):797–798
- Bowers TM, Parker MJ (2016) Assessment of outcome after hip fracture: development of a universal assessment system for hip fractures. *SICOT J* 2(27):1–4
- Pfeiffer E (1975) A short portable mental status questionnaire for the assessment of organic brain deficit in elderly patients. *J Am Geriatr Soc* 23:433–441
- Söderqvist A, Ekström W, Ponzer S, Pettersson H, Cederholm T, Dalén N, Stockholm Hip Fracture Group et al (2009) Prediction of mortality in elderly patients with hip fractures: a two-year prospective study of 1,944 patients. *Gerontology* 55(5):496–504
- EuroQol-group (2010) EQ-5D a standardised instrument for use as a measure of health outcome. <http://www.euroqol.org/>
- Harris WH (1969) Traumatic arthritis of the hip after dislocation and acetabular fractures: treatment by mold arthroplasty. An end-result study using a new method of result evaluation. *J Bone Joint Surg Am* 51(4):737–755
- Blomfeldt R, Törnkvist H, Ponzer S, Söderqvist A, Tidermark J (2005) Comparison of internal fixation with total hip replacement for displaced femoral neck fractures. Randomized, controlled trial performed at four years. *J Bone Joint Surg Am* 87(8):1680–1688
- Ludvigsson JF, Otterblad-Olausson P, Pettersson BU, Ekblom A (2009) The Swedish personal identity number: possibilities and pitfalls in healthcare and medical research. *Eur J Epidemiol* 24(11):659–667
- van Dortmont LM, Douw CM, van Breukelen AM, Laurens DR, Mulder PG, Wereldsma JC et al (2000) Outcome after hemiarthroplasty for displaced intracapsular femoral neck fracture related to mental state. *Injury* 31(5):327–331
- Gjertsen JE, Vinje T, Engesaeter LB, Lie SA, Have-lin LI, Furnes O et al (2010) Internal screw fixation compared with bipolar hemiarthroplasty for treatment of displaced femoral neck fractures in elderly patients. *J Bone Joint Surg Am* 92(3):619–628
- Olofsson B, Stenvall M, Lundström M, Gustafson Y, Svensson O (2009) Mental status and surgical methods in patients with femoral neck fracture. *Orthop Nurs* 28(6):305–313
- Rogmark C, Carlsson A, Johnell O, Sernbo I (2002) Primary hemiarthroplasty in old patients with displaced femoral neck fracture: a 1-year follow-up of 103 patients aged 80 years or more. *Acta Orthop Scand* 73(6):605–610
- Rogmark C, Johnell O (2006) Primary arthroplasty is better than internal fixation of displaced femoral neck fractures: a meta-analysis of 14 randomized studies with 2289 patients. *Acta Orthop* 77(3):359–367
- Erkinjuntti T, Sulkava R, Wikström J, Autio L (1987) Short portable mental status questionnaire as a screening test for dementia and delirium among the elderly. *J Am Geriatr Soc* 35:412–416
- Fitten LJ, Lusky R, Hamann C (1990) Assessing treatment decision-making capacity in elderly nursing home residents. *J Am Geriatr Soc* 38:1097–1104
- Smith MJ, Breitbart WS, Platt MM (1995) A critique of instruments and methods to detect, diagnose, and rate delirium. *J Pain Symptom Manag* 10:35–77
- Strömberg L, Lindgren U, Nordin C, Ohlén G, Svensson O (1997) The appearance and disappearance of cognitive impairment in elderly patients during treatment for hip fracture. *Scand J Caring Sci* 11(3):167–175
- Söderqvist A, Miedel R, Ponzer S, Tidermark J (2006) The influence of cognitive function on outcome after a hip fracture. *J Bone Joint Surg Am* 88(10):2115–2123
- Smith T, Pelpola K, Ball M, Ong A, Myint PK (2014) Pre-operative indicators for mortality following hip fracture surgery: a systematic review and meta-analysis. *Age Ageing* 43(4):464–471
- Parsons N, Griffin XL, Achten J, Costa ML (2014) Outcome assessment after hip fracture: is EQ-5D the answer? *Bone Joint Res* 3(3):69–75
- Griffin XL, Parsons N, Achten J, Fernandez M, Costa ML (2015) Recovery of health-related quality of life in a United Kingdom hip fracture population. The WarwickHip trauma evaluation—a prospective cohort study. *Bone Joint J* 97-B(3):372–382
- Muir SW, Yohannes AM (2009) The impact of cognitive impairment on rehabilitation outcomes in elderly patients admitted with a femoral neck fracture: a systematic review. *J Geriatr Phys Ther* 32(1):24–32
- Duckworth AD, Phillips SA, Stone O, Moran M, Breusch SJ, Biant LC (2012) Deep infection after hip fracture surgery: predictors of early mortality. *Injury* 43(7):1182–1186
- Mariconda M, Costa GG, Cerbasi S, Recano P, Aitanti E, Gambacorta M et al (2015) The determinants of mortality and morbidity during the year following fracture of the hip: a prospective study. *Bone Joint J* 97-B(3):383–390
- Lapidus LJ, Charalampidis A, Rundgren J, Encoson A (2013) Internal fixation of garden I and II femoral neck fractures: posterior tilt did not influence the reoperation rate in 382 consecutive hips followed for a minimum of 5 years. *J Orthop Trauma* 27(7):386–390