



Leptin and the intervertebral disc: a biochemical link exists between obesity, intervertebral disc degeneration and low back pain—an in vitro study in a bovine model

Anand H Segar^{1,2,3} · Jeremy C T Fairbank^{1,2} · Jill Urban³

Received: 20 February 2018 / Accepted: 19 September 2018 / Published online: 15 October 2018
© The Author(s) 2018

Abstract

Purpose The aim of this study was to identify the effects of leptin upon the intervertebral disc (IVD) and to determine whether these responses are potentiated within an environment of existing degeneration. Obesity is a significant risk factor for low back pain (LBP) and IVD degeneration. Adipokines, such as leptin, are novel cytokines produced primarily by adipose tissue and have been implicated in degradative and inflammatory processes. Obese individuals are known to have higher concentrations of serum leptin, and IVD cells express leptin receptors. We hypothesise that adipokines, such as leptin, mediate a biochemical link between obesity, IVD degeneration and LBP.

Methods The bovine intervertebral disc was used as a model system to investigate the biochemical effects of obesity, mediated by leptin, upon the intervertebral disc. Freshly isolated cells, embedded in 3D alginate beads, were subsequently cultured under varying concentrations of leptin, alone or together with the pro-inflammatory cytokines TNF- α , IL-1 β or IL-6. Responses in relation to production of nitric oxide, lactate, glycosaminoglycans and expression of anabolic and catabolic genes were analysed.

Results Leptin influenced the cellular metabolism leading particularly to greater production of proteases and NO. Addition of leptin to an inflammatory environment demonstrated a marked deleterious synergistic effect with greater production of NO, MMPs and potentiation of pro-inflammatory cytokine production.

Conclusions Leptin can initiate processes involved in IVD degeneration. This effect is potentiated in an environment of existing degeneration and inflammation. Hence, a biochemical mechanism may underlie the link between obesity, intervertebral disc degeneration and low back pain.

Graphical abstract These slides can be retrieved under Electronic Supplementary Material.

Key points

Obesity, BMI, overweight, leptin, adipokine, intervertebral disc degeneration, low back pain

1. Leptin, the prototypical adipokine, can initiate and potentiate the production of molecules involved in intervertebral disc degeneration and back pain.
2. The negative effects of a pro-inflammatory environment, especially IL-6, are potentiated by leptin.
3. These results demonstrate a possible biochemical link between obesity and disc degeneration.

Figure 1: Total MMP production by annulus fibrosus and nucleus pulposus cells in response to leptin and pro-inflammatory cytokines.

The figure consists of two bar charts, A and B, showing MMP production (ng/ml) for various MMPs (MMP-1, 2, 3, 7, 8, 9, 12, 13, 14) under different conditions. Chart A shows Annulus Fibrosus and Chart B shows Nucleus Pulposus. The conditions are: TNF- α , IL-1 β , IL-6, and combinations thereof with or without leptin (0.1 and 100 ng/ml). Leptin significantly increases MMP production, especially in the presence of pro-inflammatory cytokines.

Take Home Messages

1. Leptin, the prototypical adipokine, can initiate and potentiate the production of molecules involved in intervertebral disc degeneration and back pain.
2. The negative effects of a pro-inflammatory environment, especially IL-6, are potentiated by leptin.
3. These results demonstrate a possible biochemical link between obesity and disc degeneration.

Electronic supplementary material The online version of this article (<https://doi.org/10.1007/s00586-018-5778-7>) contains supplementary material, which is available to authorized users.

Extended author information available on the last page of the article

Keywords Obesity · BMI · Overweight · Leptin · Adipokine · Intervertebral disc degeneration · Low back pain

Introduction

Low back pain (LBP) is the leading cause of years lived with disability, worldwide [1]. While the pathogenesis of low back pain is complex and not well understood, many authors have linked LBP to intervertebral disc (IVD) degeneration [2–4].

Obesity is another public health epidemic, described as one of the most important contributors to the worldwide disease burden [5]. Obesity is associated with an increased risk of cardiovascular disease, type 2 diabetes and cancer [6, 7]. Obesity is also a significant risk factor for musculoskeletal problems such as osteoarthritis [8, 9].

Over the past 20 years it has become evident that many of the pathological conditions arising in obese patients involve a systemic low-grade inflammation. Adipose tissue or fat, though once thought to be benign, serving as a source of energy, is now known to be a true endocrine organ producing a variety of cytokines, termed adipokines. Leptin, discovered in 1994, is the prototypical adipokine and acts primarily to regulate appetite [10]. It is also the primary biochemical mediator of the inflammatory, degradative and pain-related effects of obesity and, while primarily the product of adipocytes, is also produced by multiple other tissues including cartilages [11–13].

Both biological and clinical evidence implicates leptin in the pathogenesis of osteoarthritis and other musculoskeletal disorders [10, 14]. While inappropriate mechanical forces and changes in gait are thought to mediate osteoarthritic changes in joints of obese patients, biochemical pathways involving leptin produced by the intracellular fat pad can upregulate degradative enzymes [14, 15] in synovium and articular cartilage and lead to local expression of pro-inflammatory cytokines [16].

Obesity is also a risk factor for disc degeneration and low back pain with investigations concentrating on the role of altered body weight and biomechanics. Although leptin and its receptor have been localised in the IVD [13, 17], little is known about their possible roles. Given the similarities between cartilage and the IVD, leptin could mediate similar degradative processes and prove to be a biochemical link between obesity, IVD degeneration and LBP. Indeed, Urquhart et al. [18, 19] found greater fat mass was associated with an increased back pain and reduced disc height and hypothesised biochemical factors as a mediator. Similarly, a large MRI population study showed similar relationship with obesity and disc degeneration [20]. Hence, we hypothesise that leptin, an adipokine, can induce inflammation and degeneration in the IVD and that, as in articular cartilage, the effect is potentiated in a pro-inflammatory environment.

Materials and methods

Disc cell isolation and culture

Bovine IVDs appear similar in cell and matrix properties to human discs and were used as a model system [21]. The nucleus pulposus (NP) and annulus fibrosus (AF) of the IVD were dissected from 18- to 24-month bovine tails, obtained from a local abattoir, within 2 h of slaughter.

IVD cells were isolated separately from the NP and AF by enzymatic digestion using a standard protocol [22]. The cells were then encapsulated in alginate beads to maintain cell phenotype [23–25]. The cells were suspended in a solution of 1.2% alginate at a concentration of 4 million cells/ml. This suspension was extruded through a 21G needle into 102 mM CaCl₂ where insoluble calcium alginate beads are formed, encapsulating the cells. Excess CaCl₂ was removed by washing the beads thrice with phosphate-buffered saline (PBS). This procedure resulted in spherical alginate beads each of 15 µl volume, containing 40,000 cells per bead.

The beads were cultured in DMEM [25 mM HEPES, 1 mM sodium pyruvate, 1000 mg/L glucose and pyridoxine] at 380 mOsm supplemented with antibiotic–antimycotic solution (2% v/v) and foetal bovine serum (10% v/v)] at 1 million cells/ml and at 37 °C, 100% humidity in 21% O₂/1% CO₂.

Experimental procedure

Cells were cultured for 24 h initially to allow equilibration to the culture system. The cells were then exposed to leptin alone, at a concentration of 5, 10 or 25 µg/ml, for 48 h [14]. At the end of the experiment, the media and alginate were stored for later analysis, while RNA was extracted from the cells.

Following a similar protocol, cells were also exposed to a pro-inflammatory cytokine [TNF-α, interleukin (IL)-1β or IL-6] alone, at concentrations of 0.1, 1.0, 10 or 100 ng/ml, or in combination with leptin at 25 µg/ml. This combination of cytokines and leptin aimed to mimic the pro-inflammatory environment described in disc degeneration [26] and herniation [27]. The concentration of 25 µg/ml for leptin was chosen for the pro-inflammatory experiments as this showed the greatest effect in isolated culture.

Outcome measures

Biochemical measurements

Lactate concentrations were measured using a commercially available lactate assay kit following the manufacturer's protocol (Trinity Biotech, Dublin, Ireland). Sulphated GAGs were measured using a modification of the technique described by Farndale [28]. Nitric oxide was measured by the modified Griess reaction [29].

Matrix metalloproteinases

The activity and relative concentrations of matrix metalloproteinases (MMPs) were measured in the culture supernatant at various time points. Three methods were used.

Gelatin zymography is an electrophoretic technique that allows for substrate-dependent identification of MMP-2 (gelatinase-A) and MMP-9 (gelatinase-B) at the picogram level and was used as described by Hu [30]. Recombinant human MMP-2 was used as a positive control. Western blotting allowed for visualisation of MMP-1, MMP-3 and MMP-13. Standard protocol was used with exceptions noted below. To improve sensitivity, 100 µg of protein was concentrated using StrataClean resin (Agilent Technologies, USA). Recombinant human MMP-1, MMP-3 and MMP-13 western blot standards were used as positive control and prestained standards as a molecular weight marker. Bovine reactive, primary anti-MMP-1, anti-MMP-3 and anti-MMP-13 antibodies at a dilutions of 1:1000, 1:1000 and 1:5000, respectively, were used (Abcam, Cambridge, UK). Chemiluminescence was detected, and protein bands were quantified by densitometry on ImageJ and normalised to the relevant positive standard.

Fluorometric assay was used to quantify total MMPs. The assay is able to detect the presence of activated MMP-1, MMP-2, MMP-3, MMP-7, MMP-8, MMP-9, MMP-12, MMP-13 and MMP-14 down to nanogram concentrations. The commercially available SensoLyte 520 Generic MMP Assay Kit was used as per instructions (Anaspec, California, USA). Pro-MMPs were activated immediately prior to performing the assay using 1 mM APMA.

Quantification of gene expression

Upon completion of the experiment, alginate beads were dissolved by the addition of citrate buffer and centrifuged for 5 min at 2500 rpm isolating the cells. The supernatant was removed and digested with 2 µl of papain at 60 °C for 24 h. The cells were washed carefully with PBS to remove any carryover citrate buffer, and the ribonucleic acid (RNA)

was isolated using the Qiagen RNeasy Mini Kit using the manufacturers protocol (Qiagen, Hilden, Germany). Briefly, cells were lysed using the provided RLT buffer with 2-ME, inactivating RNases and releasing the RNA. Homogenisation, to reduce sample viscosity, was achieved with the QIAshredder. The homogenate was combined with 70% ethanol and applied to a silica membrane, to which RNA binds. Repeated washing and centrifugation with the provided buffers purified the RNA, which was finally eluted in RNase-/DNase-free water. RNA concentration and purity were assessed using a NanoDrop 1000 spectrophotometer. Samples were only used if the 260:280 ratio was greater than 1.75. Genomic deoxyribonucleic acid (DNA) was eliminated from the RNA by adding precision DNase and heating to 55 °C. This DNase enzyme has no activity against RNA. Complementary DNA (cDNA) was synthesised from the RNA samples using the nanoScript reverse transcription premix (PrimerDesign, Manchester, UK).

Internal control genes were selected using the validated GeNorm algorithm designed by Vandesompele [31]. In this system, the two most stably expressed genes were EIF2B2 and ACTB. Oligonucleotide primers were designed and validated by PrimerDesign. All PCRs utilised the 2× Precision Mastermix with SYBR green dye accordingly using the protocol supplied by PrimerDesign. The reaction was read on the ABI Prism 7000 (Applied Biosystems, California, USA). Melting curves were performed at the end of 40 cycles to ensure a single amplification product. All data were analysed using the $2^{-\Delta\Delta C_t}$ method with statistical analysis performed using Student's *t* test as described by Schmittgen and Livak [32].

Statistical analysis

All data are presented as mean ± standard error of the mean (SEM) of at least three biological replicates ($n \geq 3$). Comparison across multiple groups was achieved using the two-way analysis of variance (ANOVA) with Bonferroni correction for multiple comparisons. A *p* value ≤ 0.05 was considered statistically significant.

Results

Leptin alone

Lactate production

Leptin alone had minimal effect on cellular energy metabolism. In the AF, there was no discernible change in lactate production with increasing leptin concentration. The NP however showed a trend for a fall in metabolism with the increase in leptin concentration, but this did not reach

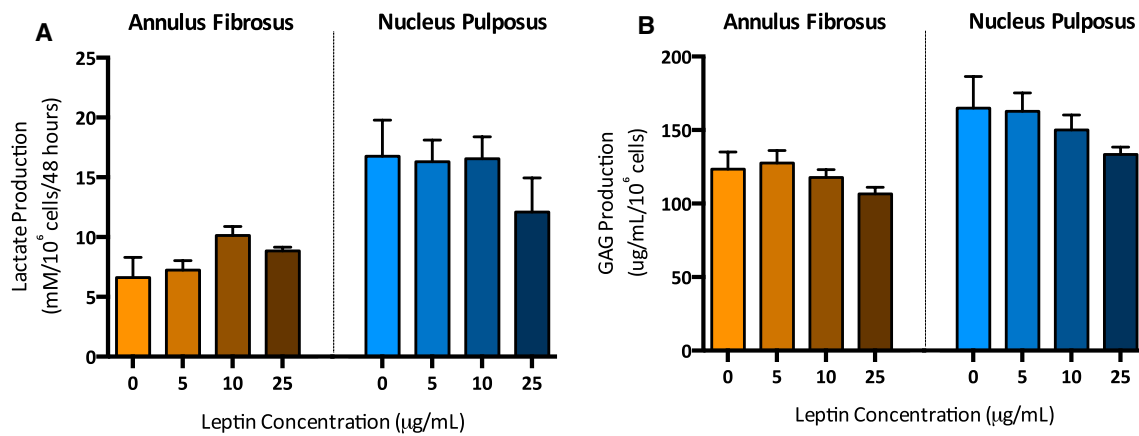


Fig. 1 Lactate (a) and glycosaminoglycan (GAG) (b) production by annulus fibrosus (AF) and nucleus pulposus (NP) cells upon exposure to 3 concentrations of leptin. Assays performed after 48 h of culture and exposure to leptin. Data represented as mean ± SEM

statistical significance (Fig. 1a). Lactate production per cell was significantly greater under all conditions for NP than for AF cells.

Glycosaminoglycan (GAG) production

Figure 1b shows the GAG production by both cell types. With increasing leptin, there was a trend for a fall in rates of production, but this was not significant. Compared to the control, AF and NP cells exposed to 25 µg/ml of leptin produced 14% and 19% less GAGs, respectively.

Matrix metalloproteinases production measured by zymography and western blotting

There was a clear dose-dependent increase in MMP-3 and MMP-9 production, by both AF and NP cells, with increases in leptin concentrations (Fig. 2). MMP-1 and MMP-2 did not follow this pattern in the AF and were not detectable in the NP. MMP-13 was not detectable for either cell type at any leptin concentration. Importantly, total MMP production was stimulated markedly with the addition of 25 µg/ml leptin by both AF and NP cells (Fig. 6).

Real-time quantitative polymerase chain reaction

As leptin at 25 µg/ml had the greatest effect on cell metabolism and protein production, gene expression was quantified in both cell types exposed to this concentration. Figure 3a shows that for the AF, MMP-7, MMP-11 and TNF-α were all markedly increased relative to the control. For the NP, there was an increase in expression of the ADAMTS-4, ADAMTS-5, IL-6 and TNF-α. There were no changes in the expression of the anabolic genes, aggrecan and collagen and the tissue inhibitor of metalloproteases (TIMPs).

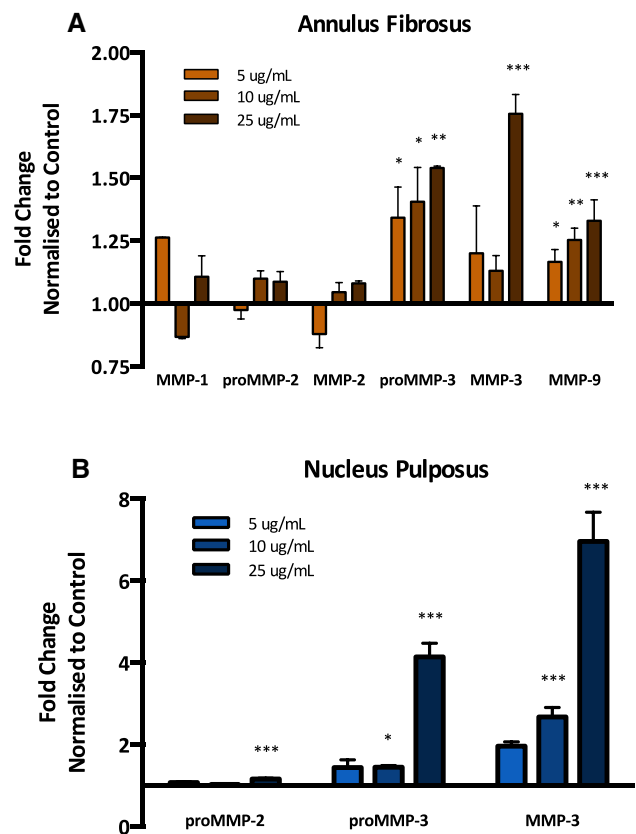


Fig. 2 Effect of leptin concentrations on matrix metalloproteinases (MMPs) produced by annulus fibrosus and nucleus pulposus cells. MMP-2 and MMP-9 measured by gelatin zymography and MMP-1 and MMP-3 quantified by western blotting. At three concentrations of leptin (5, 10 and 25 µg/ml). Intensity normalised and represented as fold change relative to control. MMP-13 was not detected from either NP or AF cells, MMP-1 and MMP-9 not detected from NP cells. Data represented as mean ± SEM. **p* < 0.05; ***p* < 0.01; ****p* < 0.001

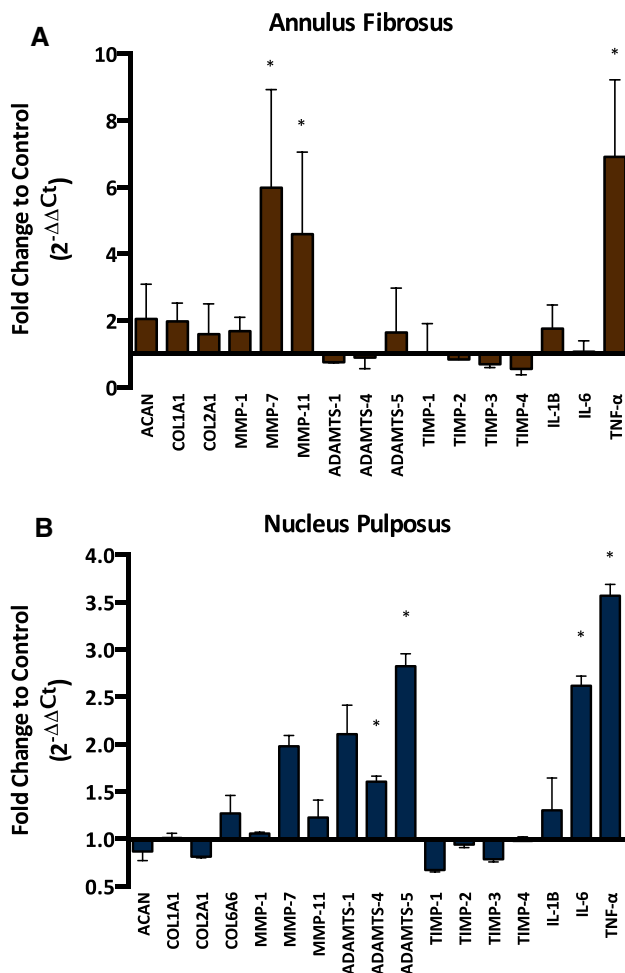


Fig. 3 Gene expression by both annulus fibrosus and nucleus pulposus cells in response to 25 $\mu\text{g/ml}$ leptin normalised to ACTB and EIF2B2 and shown as fold change $2^{-\Delta\Delta C_t}$ to control. Data represented as mean \pm SEM of three independent experiments. * $p < 0.05$

Leptin within a pro-inflammatory environment

Given the upregulation of the pro-inflammatory cytokines, it was hypothesised that leptin and these cytokines may act synergistically thus potentiating further degradation within an already degenerate environment. Three cytokines, TNF- α , IL-1 β or IL-6, were individually added to the culture system described above along with leptin at 25 $\mu\text{g/ml}$.

Lactate production

Figure 4a, b shows the combined effect of leptin and TNF- α . For the AF, there was a trend for increased energy requirement as TNF- α concentration increased with a small synergistic effect of leptin. Conversely, in the NP, TNF- α was the primary driver of lactate production with no effect of leptin evident. The combination of leptin and IL-1 β had very little effect on lactate production in either cell type (Fig. 4c, d)

with the difference to the control driven mostly by IL-1 β . Lactate production rates with IL-6 were increased by the addition of leptin at lower concentrations (0.1 and 1.0 $\eta\text{g/ml}$) in the AF.

Nitric oxide production

Leptin alone significantly increased nitric oxide (NO) production rates in NP cells (Fig. 5). There was a synergistic increase with both TNF- α and IL-6 which was more marked at the lower concentrations of TNF- α and at higher concentrations of IL-6. Similar to the results seen with lactate, IL-1 β was the primary driver of NO production with most of the effects seen at lower concentrations. NO was not detected in AF cells.

Matrix metalloproteinases production

Figure 6a, b shows the total activated MMP production, as measured by fluorescent assay by both cell types in response to leptin alone, pro-inflammatory cytokines (0.1 or 100 $\eta\text{g/ml}$) alone or the combination of the two. For both the AF and NP, leptin alone increased the production of total MMPs significantly. Although the fold changes are larger than that seen in Fig. 2, the assay used here is sensitive to a spectrum of MMPs and prior to quantification, pro-MMPs were activated.

Real-time quantitative polymerase chain reaction

As the greatest synergistic effect was seen with leptin and 0.1 $\eta\text{g/ml}$ IL-6, RNA was isolated from cells exposed to this combination of factors and gene expression assayed by RT-qPCR. The only important differences in AF gene expression were with IL-6. In isolation, exposure to IL-6 led to down-regulation of IL-6 gene expression, but with the addition of leptin there was a small increase in expression. There was a similar trend in the NP with a twofold increase in IL-6 expression after leptin addition (Fig. 7b). Furthermore, in the NP, there was a significant synergistic upregulation in the expression of TNF- α , IL-6 and ADAMTS-4, by leptin. No change was seen with MMP-2 and MMP-9 and there was a slight non-significant decrease in the expression of TIMP-3.

Discussion

Our in vitro studies found that the adipokine, leptin, induces a degenerative and inflammatory cascade within the IVD. It upregulated the production of proteases such as the ADAMTSs involved in the degradation of aggrecan and also proteases able to destroy collagen and other matrix

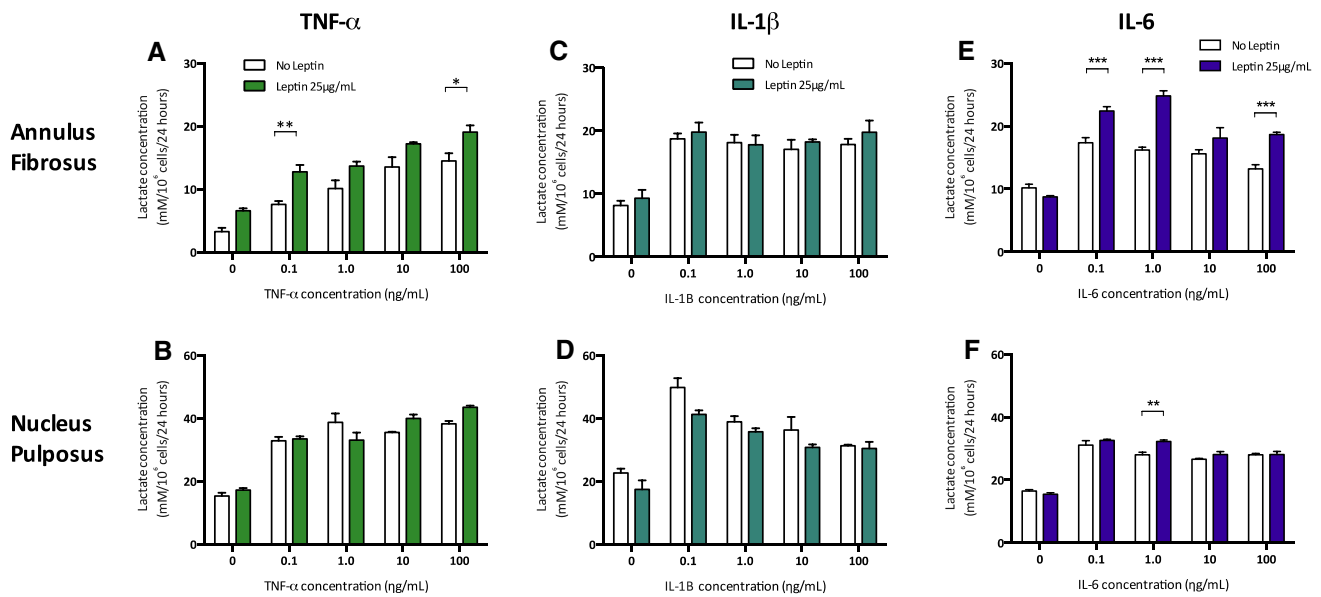


Fig. 4 Lactate production by annulus fibrosus and nucleus pulposus cells in response to leptin and pro-inflammatory cytokines. Four concentrations (0.1, 1.0, 10 and 100 ng/ml) of either TNF- α , IL-1 β or IL-6 with or without 25 μ g/ml of leptin. Data represented as mean \pm SEM of three independent experiments. * p < 0.05 ** p < 0.01 *** p < 0.001

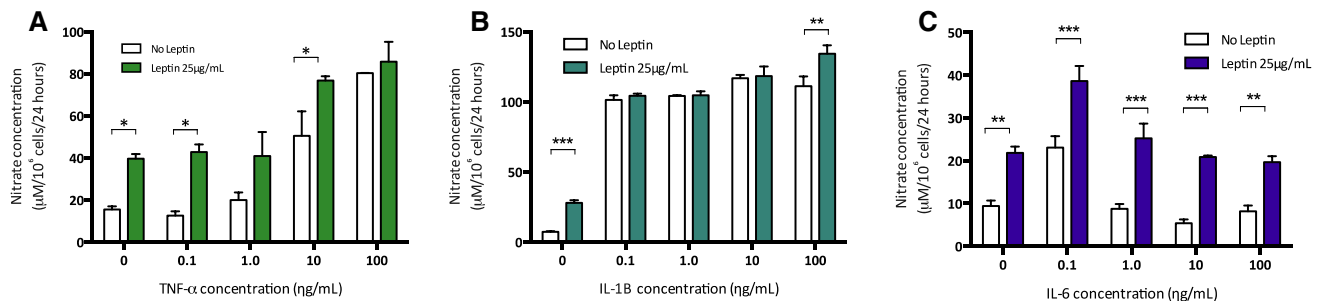


Fig. 5 Nitrate production of nucleus pulposus cells in response to leptin and pro-inflammatory cytokines. Four concentrations (0.1, 1.0, 10 and 100 ng/ml) of either TNF- α , IL-1 β or IL-6 with or without 25 μ g/ml of leptin. Nitrate production was only detected by annulus fibrosus cells at a concentration of 100 ng/ml of TNF- α (not shown). Data represented as mean \pm SEM of three independent experiments. * p < 0.05 ** p < 0.01 *** p < 0.001

macromolecules at the gene and protein level (Figs. 2, 3). These degradative processes were further stimulated markedly in the NP in a pro-inflammatory environment, particularly in the presence of IL-6 (Figs. 6, 7). Moreover, in the NP, leptin strongly upregulated the expression of the pro-inflammatory molecules themselves, particularly nitric oxide and the cytokines IL-6 and TNF- α (Figs. 5, 7).

That similar effects of leptin could be of relevance in vivo, has not been demonstrated directly in the disc. However, leptin and its receptors have been identified in degenerate regions of rat and human NP [13, 33] and also in AF cells [12, 34] which themselves produce leptin throughout the spectrum of degeneration [12]. The results thus indicate that a biochemical pathway involving increased leptin levels

could be involved in the deleterious effects of obesity on disc degeneration and back pain.

The effect of leptin on nitric oxide (NO) production could also be of importance, not only in regard to degeneration [35] but also in relation to back pain. NO has been related to spine-related pain [36] and disc herniation [27]. Leptin alone and in combination with inflammatory mediators markedly increased rates of NO production (Fig. 5).

Of particular importance is the synergy found here between leptin and IL-6. Degeneration of the intervertebral disc is characterised by increased levels of pro-inflammatory cytokines which upregulate degradative processes [26]. Here we found that in the NP, interactions between leptin and IL-6 markedly increased production of MMPs

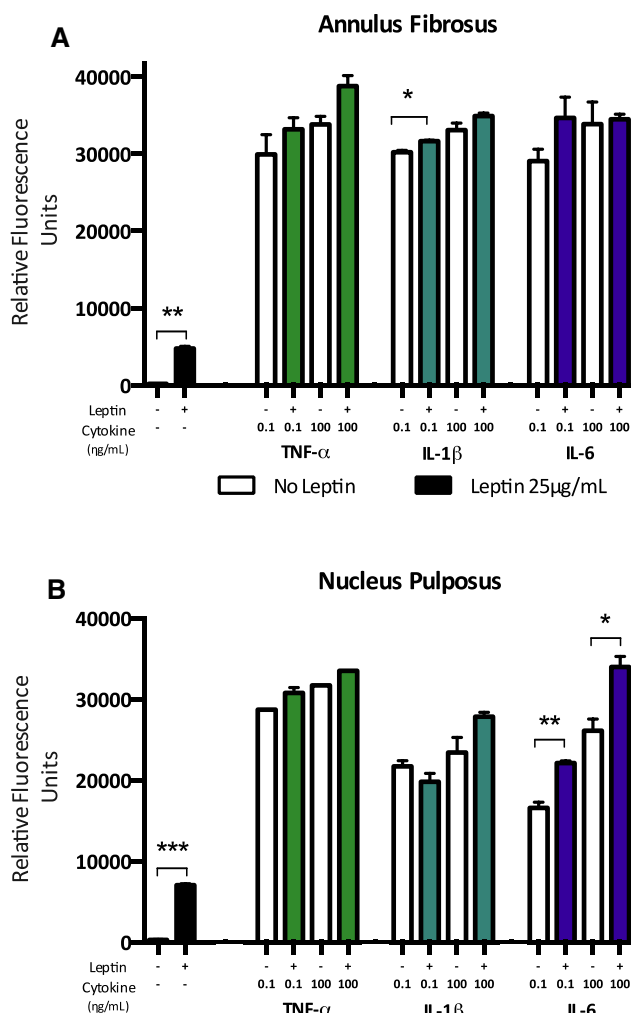


Fig. 6 Total MMP production by annulus fibrosus and nucleus pulposus cells in response to leptin and pro-inflammatory cytokines measured by a fluorescence assay. Two concentrations (0.1 and 100 ng/ml) of either TNF- α , IL-1 β or IL-6 with or without 25 μ g/ml of leptin. Assay detects the cumulative activity of MMP-1, MMP-2, MMP-3, MMP-7, MMP-8, MMP-9, MMP-12, MMP-13 and MMP-14. Data represented as mean \pm SEM of two independent experiments. * $p < 0.05$ ** $p < 0.01$ *** $p < 0.001$

and also the inflammatory molecules NO, IL-6 and TNF- α (Figs. 5, 7) relative to either IL-6 or leptin alone.

This pathway could act in vivo as leptin and IL-6 co-localise within degenerated IVDs [34]. As shown in other cell types [37–39], leptin can upregulate IL-6 directly via the IL-6 specific receptor. On the other hand, IL-6 can control leptin release centrally [40]. Both IL-6 and leptin signal through a class I cytokine receptor; leptin appears to mediate its cytokine-like effects through this homology [41]. However, trying to dissect the exact signalling pathways of leptin is complex with multiple pathways implicated including mitogen-activated protein kinases, protein kinase B, protein kinase C, nuclear factor kappa

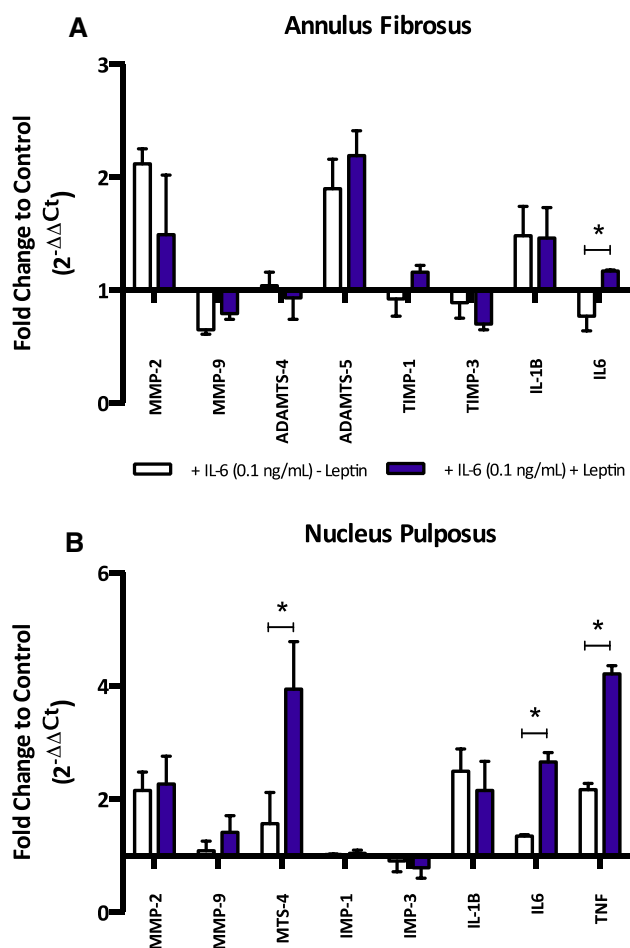


Fig. 7 Gene expression changes in both annulus fibrosus and nucleus pulposus cells in response to leptin and 0.1 ng/ml of IL-6. Normalised to ACTB and shown as fold change ($2^{-\Delta\Delta Ct}$) to control. Data represented as mean \pm SEM of three independent experiments. * $p < 0.05$

B, JAK-STAT, cyclins, NO and phosphoinositide 3-kinase [16, 37, 42, 43].

There are no large population studies investigating the relationship between leptin and back pain or disc degeneration. It is clear in the literature that obesity is associated with both low back and leg pain [44]. However, in smaller studies Urquhart et al. [18, 19] found greater fat mass was associated with increased back pain and reduced disc height and hypothesised biochemical factors as a mediator. Clinically, multiple authors have shown that leptin and other adipokines are mediators of musculoskeletal degeneration. Most recently, Fowler-Brian et al. [45] found half of the effect of increased BMI upon knee OA could be explained by leptin, a strong indictment for deleterious biochemical effects of obesity. This effect was greatest in women, in keeping with a study by Karvonen-Gutierrez et al. [46], which showed a similar independent association. Greater serum and synovial leptin have also been correlated with greater severity of knee and hip OA [47–49]. Other adipokines such as adiponectin

[50, 51], resistin [52] and visfatin [53] have all been associated with OA. Unfortunately, all but one of these studies are cross sectional and causation cannot be established.

With respect to the lumbar spine, Théron et al. [54] found liposuction of the adipose tissue in atrophied paraspinal muscles was associated with clinical improvement in back pain in 77.5% of patients studied. This improvement was accompanied by expansion of the paraspinal muscle mass. In this study, clinical improvement could be either improved muscle mass, decreased inflammatory adipose tissue or a combination of both. A recent study by James et al. would point to a biochemical link. The authors showed, in an ovine IVD injury model, an increased proportion of pro-inflammatory M1 macrophages in paraspinal adipose tissue after disc injury, suggesting a local biochemical factors could mediate pain and inflammation in patients [55].

An important consideration of an in vitro study is the extent to which physiological conditions are reproduced. The AF and NP serve different physiological functions and as a result have a different cellular phenotype. Although culture in alginate beads preserves the phenotype of NP cells, it may not be the most appropriate culture system for AF cells [25]. However, there are distinct differences in phenotype and origin between these cell types with the nucleus cells notochordal and the annulus cells originating from the mesenchyme so the differences observed are unlikely to be only due to the culture conditions.

Furthermore, given the relative paucity of data regarding the IVD and leptin, we used concentrations drawn from the cartilage literature [14, 16], viz. 5–25 µg/ml. Although levels of circulating leptin increase in obesity, they are usually in the range 10–50 ng/ml, an order of magnitude lower than used experimentally [10, 56–58]. However, studies in on osteoarthritic joints show that local concentrations of leptin may be considerably higher than those found in serum [58]. It thus seems likely that in the disc too, the levels of leptin would be higher than serum levels. Local leptin concentrations could be increased by the IVD cells, which themselves produce leptin [13, 17, 42], and also by adipose tissue adjacent to the disc. Moreover, the levels of leptin required to stimulate disc cells in vivo may be lower than seen in our model bovine system; human NP cells responded to recombinant human leptin at a concentration of only 10 ng/ml [42, 59, 60], similar to concentrations measured in serum, suggesting that indeed higher leptin levels seen in obesity could mediate disc degeneration and pain.

There is a fledging evidence base as to the role of leptin and the other adipokines in IVD degeneration. In a recent review, Sharma found only 15 in vitro studies investigating this relationship [61]. The author concluded that leptin can have significant effects on IVDs, but cautioned mechanistic and translational work is required to further understand this relationship. Future in vivo studies could look to establish

the local and systemic levels of adipokines in patients suffering from low back pain and disc degeneration. We have attempted to identify this with a cross-sectional clinical study investigating serum and paraspinal adipose tissue, the results of which are pending. If a strong association is seen, a larger longitudinal study would be required to further delineate causation.

Conclusion

In summary, this study found that leptin increases production and expression of degradative and pain-generating molecules by intervertebral disc cells. Crucially, leptin can initiate degenerative processes and within the inflammatory environment seen in degenerate discs, it can potentiate degenerative process, thus supporting a biochemical link in the relationship between intervertebral disc degeneration, back pain and obesity.

Funding The funding was provided by Wishbone Trust of New Zealand, Nuffield Medical Trust, Commonwealth Scholarships Commission and Royal Australasian College of Surgeons

Compliance with ethical standards

Conflict of interest The authors declare that they have no conflict of interest.

Open Access This article is distributed under the terms of the Creative Commons Attribution 4.0 International License (<http://creativecommons.org/licenses/by/4.0/>), which permits unrestricted use, distribution, and reproduction in any medium, provided you give appropriate credit to the original author(s) and the source, provide a link to the Creative Commons license, and indicate if changes were made.

References

1. Vos T, Flaxman AD, Naghavi M et al (2012) Years lived with disability (YLDs) for 1160 sequelae of 289 diseases and injuries 1990–2010: a systematic analysis for the Global Burden of Disease Study 2010. *Lancet* 380:2163–2196. [https://doi.org/10.1016/S0140-6736\(12\)61729-2](https://doi.org/10.1016/S0140-6736(12)61729-2)
2. Luoma K, Riihimäki H, Luukkainen R et al (2000) Low back pain in relation to lumbar disc degeneration. *Spine* 25:487–492
3. de Schepper EIT, Damen J, van Meurs JBJ et al (2010) The association between lumbar disc degeneration and low back pain: the influence of age, gender, and individual radiographic features. *Spine* 35:531–536. <https://doi.org/10.1097/brs.0b013e3181aa5b33>
4. Cheung KMC, Karppinen J, Chan D et al (2009) Prevalence and pattern of lumbar magnetic resonance imaging changes in a population study of one thousand forty-three individuals. *Spine* 34:934–940. <https://doi.org/10.1097/BRS.0b013e3181a01b3f>
5. Haslam DW, James WPT (2005) Obesity. *The Lancet* 366:1197–1209. [https://doi.org/10.1016/S0140-6736\(05\)67483-1](https://doi.org/10.1016/S0140-6736(05)67483-1)
6. Goodwin PJ, Stambolic V (2015) Impact of the obesity epidemic on cancer. *Annu Rev Med* 66:281–296

7. Guh DP, Zhang W, Bansback N et al (2009) The incidence of comorbidities related to obesity and overweight: a systematic review and meta-analysis. *BMC Public Health* 25:88
8. Stienstra R, vanDiepen JA, Tack CJ et al (2011) Inflammasome is a central player in the induction of obesity and insulin resistance. *Proc Natl Acad Sci USA* 13:15324–15329
9. Horng T, Hotamisligil GS (2011) Linking the inflammasome to obesity-related disease. *Nat Med* 17:164–165
10. Lago F, Dieguez C, Gomez-Reino J, Gualillo O (2007) Adipokines as emerging mediators of immune response and inflammation. *Nat Clin Pract Rheumatol* 3:716–724. <https://doi.org/10.1038/ncprheum0674>
11. Gomez R, Lago F, Gomez-Reino J et al (2009) Adipokines in the skeleton: influence on cartilage function and joint degenerative diseases. *J Mol Endocrinol* 43:11–18. <https://doi.org/10.1677/JME-08-0131>
12. Gruber HE, Ingram JA, Hoelscher GL, Hanley EN Jr (2007) Leptin expression by annulus cells in the human intervertebral disc. *Spine J* 7:437–443. <https://doi.org/10.1016/j.spinee.2006.08.001>
13. Zhao C-Q, Liu D, Li H et al (2008) Expression of leptin and its functional receptor on disc cells: contribution to cell proliferation. *Spine* 33:858–864. <https://doi.org/10.1097/BRS.0b013e31818338e5>
14. Hui W, Litherland GJ, Elias MS, et al (2011) Leptin produced by joint white adipose tissue induces cartilage degradation via upregulation and activation of matrix metalloproteinases. *Ann Rheum Dis* 455–462
15. Koskinen A, Vuolteenaho K, Nieminen R et al (2011) Leptin enhances MMP-1, MMP-3 and MMP-13 production in human osteoarthritic cartilage and correlates with MMP-1 and MMP-3 in synovial fluid from OA patients. *Clin Exp Rheumatol* 29:57–64
16. Vuolteenaho K, Koskinen A, Kukkonen M et al (2009) Leptin enhances synthesis of proinflammatory mediators in human osteoarthritic cartilage—mediator role of NO in leptin-induced PGE2, IL-6, and IL-8 production. *Mediat Inflamm* 2009:345838. <https://doi.org/10.1155/2009/345838>
17. Gruber HE, Ingram JA, Hoelscher GL, Hanley EN Jr (2007) Leptin expression by annulus cells in the human intervertebral disc. *Spine J* 7:437–443. <https://doi.org/10.1016/j.spinee.2006.08.001>
18. Urquhart DM, Berry P, Wluka AE et al (2011) 2011 Young Investigator Award winner: Increased fat mass is associated with high levels of low back pain intensity and disability. *Spine* 36:1320–1325. <https://doi.org/10.1097/brs.0b013e3181f9fb66>
19. Urquhart DM, Kurniadi I, Triangto K et al (2014) Obesity is associated with reduced disc height in the lumbar spine but not at the lumbosacral junction. *Spine* 39:E962–E966. <https://doi.org/10.1097/BRS.0000000000000411>
20. Samartzis D, Karppinen J, Chan D et al (2012) The association of lumbar intervertebral disc degeneration on magnetic resonance imaging with body mass index in overweight and obese adults: a population-based study. *Arthr Rheum* 64:1488–1496. <https://doi.org/10.1002/art.33462>
21. Urban JP, Roberts S (2003) Degeneration of the intervertebral disc. *Arthr Res Ther* 5:120–138. <https://doi.org/10.1186/ar629>
22. Cui Y, Yu J, Urban JPG, Young DA (2010) Differential gene expression profiling of metalloproteinases and their inhibitors: a comparison between bovine intervertebral disc nucleus pulposus cells and articular chondrocytes. *Spine* 35:1101–1108. <https://doi.org/10.1097/BRS.0b013e3181c0c727>
23. Guo JF, Jourdain GW, MacCallum DK (1989) Culture and growth characteristics of chondrocytes encapsulated in alginate beads. *Connect Tissue Res* 19:277–297. <https://doi.org/10.3109/03008208909043901>
24. Hauselmann HJ, Fernandes RJ, Mok SS et al (1994) Phenotypic stability of bovine articular chondrocytes after long-term culture in alginate beads. *J Cell Sci* 107(Pt 1):17–27
25. Horner HA, Roberts S, Bielby RC et al (2002) Cells from different regions of the intervertebral disc: effect of culture system on matrix expression and cell phenotype. *Spine* 27:1018–1028
26. Risbud MV, Shapiro IM (2014) Role of cytokines in intervertebral disc degeneration: pain and disc content. *Spine* 10:44–56. <https://doi.org/10.1038/nrrheum.2013.160>
27. Kang JD, Georgescu HI, McIntyre-Larkin L et al (1996) Herniated lumbar intervertebral discs spontaneously produce matrix metalloproteinases, nitric oxide, interleukin-6, and prostaglandin E2. *Spine* 21:271–277
28. Farndale R, Buttle D, Barratt A (1986) Improved quantitation and discrimination of sulphated glycosaminoglycans by use of dimethylmethylene blue. *Biochim Biophys Acta (BBA)* 883:173–177. [https://doi.org/10.1016/0304-4165\(86\)90306-5](https://doi.org/10.1016/0304-4165(86)90306-5)
29. Miranda KM, Espey MG, Wink DA (2001) A rapid, simple spectrophotometric method for simultaneous detection of nitrate and nitrite. *Nitric Oxide* 5:62–71. <https://doi.org/10.1006/niox.2000.0319>
30. Hu X, Beeton C (2010) Detection of functional matrix metalloproteinases by zymography. *J Vis Exp*. <https://doi.org/10.3791/2445>
31. Vandesompele J, DePreter K, Pattyn F et al (2002) Accurate normalization of real-time quantitative RT-PCR data by geometric averaging of multiple internal control genes. *Genome Biol* 3:research0034. <https://doi.org/10.1186/gb-2002-3-7-research0034>
32. Schmittgen TD, Livak KJ (2008) Analyzing real-time PCR data by the comparative CT method. *Nat Protoc* 3:1101–1108
33. Johnson WE, Eisenstein SM, Roberts S (2001) Cell cluster formation in degenerate lumbar intervertebral discs is associated with increased disc cell proliferation. *Connect Tissue Res* 42:197–207
34. Koerner JD, Markova DZ, Yadla S et al (2014) Differential gene expression in anterior and posterior annulus fibrosus. *Spine* 39:1917–1923
35. Liu GZ, Ishihara H, Osada R et al (2001) Nitric oxide mediates the change of proteoglycan synthesis in the human lumbar intervertebral disc in response to hydrostatic pressure. *Spine* 26:134–141
36. Jacobs LJ, Vo N, Kang JD (2011) Identifying inflammatory targets for biologic therapies for spine pain. *PM R* 3:S12–S17. <https://doi.org/10.1016/j.pmrj.2011.05.003>
37. Yang W-H, Liu S-C, Tsai C-H et al (2013) Leptin induces IL-6 expression through OBR1 receptor signaling pathway in human synovial fibroblasts. *PLoS ONE* 8:e75551. <https://doi.org/10.1371/journal.pone.0075551>
38. Agrawal S, Gollapudi S, Su H, Gupta S (2011) Leptin activates human B cells to secrete TNF- α , IL-6, and IL-10 via JAK2/STAT3 and p38MAPK/ERK1/2 signaling pathway. *J Clin Immunol* 31:472–478. <https://doi.org/10.1007/s10875-010-9507-1>
39. Tang C-H, Tang CH, Lu DY et al (2007) Leptin-induced IL-6 production is mediated by leptin receptor, insulin receptor substrate-1, phosphatidylinositol 3-kinase, Akt, NF-kappaB, and p300 pathway in microglia. *J Immunol* 179:1292–1302
40. Sadagurski M, Norquay L, Farhang J, D'Aquino K (2010) Human IL6 enhances leptin action in mice. *Diabetologia*. <https://doi.org/10.1007/s00125-009-1580-8>
41. Frühbeck G (2006) Intracellular signalling pathways activated by leptin. *Biochem J* 393:7. <https://doi.org/10.1042/BJ20051578>
42. Li Z, Shen J, Wu WKK et al (2012) Leptin induces cyclin D1 expression and proliferation of human nucleus pulposus cells via JAK/STAT, PI3 K/Akt and MEK/ERK pathways. *PLoS ONE* 7:e53176. <https://doi.org/10.1371/journal.pone.0053176>
43. Tang C-H, Lu D-Y, Yang R-S et al (2007) Leptin-induced IL-6 production is mediated by leptin receptor, insulin receptor substrate-1, phosphatidylinositol 3-kinase, Akt, NF-kappaB, and p300 pathway in microglia. *J Immunol* 179:1292–1302. <https://doi.org/10.4049/jimmunol.179.2.1292>

44. Segar AH, Urban JPG, Fairbank JCT et al (2016) The Association Between Body Mass Index (BMI) and back or leg pain in patients with spinal conditions: results from the Genodisc Study. *Spine* 41:E1237–E1243. <https://doi.org/10.1097/BRS.00000000000001606>
45. Fowler Brown A, Kim DH, Shi L et al (2015) The mediating effect of leptin on the relationship between body weight and knee osteoarthritis in older adults. *Arthr Rheum* 67:169–175. <https://doi.org/10.1002/art.38913>
46. Karvonen-Gutierrez CA, Harlow SD, Mancuso P et al (2013) Leptin levels are associated with radiographic knee osteoarthritis among a cohort of mid-life women. *Arthr Care Res* 65:936–944. <https://doi.org/10.1002/acr.21922>
47. Stannus OP, Jones G, Quinn SJ et al (2010) The association between leptin, interleukin-6, and hip radiographic osteoarthritis in older people: a cross-sectional study. *Arthr Res Ther* 12:R95. <https://doi.org/10.1186/ar3022>
48. Staikos C, Ververidis A, Drosos G et al (2013) The association of adipokine levels in plasma and synovial fluid with the severity of knee osteoarthritis. *Rheumatology (Oxford)* 52:1077–1083. <https://doi.org/10.1093/rheumatology/kes422>
49. Berry PA, Jones SW, Cicuttini FM et al (2011) Temporal relationship between serum adipokines, biomarkers of bone and cartilage turnover, and cartilage volume loss in a population with clinical knee osteoarthritis. *Arthr Rheum* 63:700–707. <https://doi.org/10.1002/art.30182>
50. Filková M, Lišková M, Hulejová H et al (2009) Increased serum adiponectin levels in female patients with erosive compared with non-erosive osteoarthritis. *Ann Rheum Dis* 68:295–296. <https://doi.org/10.1136/ard.2008.095737>
51. Yusuf E, Ioan-Facsinay A, Bijsterbosch J et al (2011) Association between leptin, adiponectin and resistin and long-term progression of hand osteoarthritis. *Ann Rheum Dis* 70:1282–1284. <https://doi.org/10.1136/ard.2010.146282>
52. Choe J-Y, Bae J, Jung H-Y et al (2012) Serum resistin level is associated with radiographic changes in hand osteoarthritis: cross-sectional study. *Joint Bone Spine* 79:160–165. <https://doi.org/10.1016/j.jbspin.2011.04.009>
53. Gosset M, Berenbaum F, Salvat C et al (2008) Crucial role of visfatin/pre-B cell colony-enhancing factor in matrix degradation and prostaglandin E2 synthesis in chondrocytes: possible influence on osteoarthritis. *Arthr Rheum* 58:1399–1409. <https://doi.org/10.1002/art.23431>
54. Théron J, Guimaraens L, Casasco A et al (2007) Lumbosacral liposuction. A new tool for the treatment of low back pain. *Interv Neuroradiol* 13:153
55. James G, Sluka KA, Blomster L et al (2018) Macrophage polarization contributes to local inflammation and structural change in the multifidus muscle after intervertebral disc injury. *Eur Spine J* 27:1744–1756. <https://doi.org/10.1007/s00586-018-5652-7>
56. Iwamoto J, Takeda T, Sato Y, Matsumoto H (2011) Serum leptin concentration positively correlates with body weight and total fat mass in postmenopausal Japanese women with osteoarthritis of the knee. *Arthritis* 2011:1–6. <https://doi.org/10.1002/art.10630>
57. Shamsuzzaman ASM (2004) Independent association between plasma leptin and C-Reactive protein in healthy humans. *Circulation* 109:2181–2185. <https://doi.org/10.1161/01.CIR.0000127960.28627.75>
58. Presle N, Pottie P, Dumond H et al (2006) Differential distribution of adipokines between serum and synovial fluid in patients with osteoarthritis. Contribution of joint tissues to their articular production. *Osteoarthr Cartil* 14:690–695. <https://doi.org/10.1016/j.joca.2006.01.009>
59. Li Z, Yu X, Liang J et al (2014) Leptin downregulates aggrecan through the p38-ADAMST pathway in human nucleus pulposus cells. *PLoS ONE* 9:e109595. <https://doi.org/10.1371/journal.pone.0109595>
60. Li Z, Shen J, Wu WKK et al (2013) The role of leptin on the organization and expression of cytoskeleton elements in nucleus pulposus cells. *J Orthop Res*. <https://doi.org/10.1002/jor.22308>
61. Sharma A (2018) The role of adipokines in intervertebral disc degeneration. *Med Sci* 6:34. <https://doi.org/10.3390/medsci6020034>

Affiliations

Anand H Segar^{1,2,3}  · Jeremy C T Fairbank^{1,2} · Jill Urban³

✉ Anand H Segar
ahsegar@gmail.com

¹ Nuffield Department of Orthopaedics, Rheumatology and Musculoskeletal Sciences, University of Oxford, Oxford, UK

² Nuffield Orthopaedic Centre, Oxford Nuffield NHS Trust, Windmill Road, Oxford OX3 7HE, UK

³ Department of Physiology, Anatomy and Genetics, University of Oxford, Oxford, UK