

Aral I. Okay

Stratigraphic and metamorphic inversions in the central Menderes Massif: a new structural model

Published online: 29 September 2001
© Springer-Verlag 2001

Int J Earth Sciences (2001) 89:709–727

Due to an unfortunate error six incorrect figures were published in the article. The correct figures are printed below (Figs. 1, 2, 3, 4, 7, 8).

The online version of the original article can be found at
<http://dx.doi.org/10.1007/s005310000098>

A.I. Okay (✉)
İstanbul Teknik Üniversitesi, Avrasya Yerbilimleri Enstitüsü,
Ayazağa 80626, İstanbul, Turkey
e-mail: okay@itu.edu.tr
Tel.: +90-212-2856210
Fax: +90-212-2856208

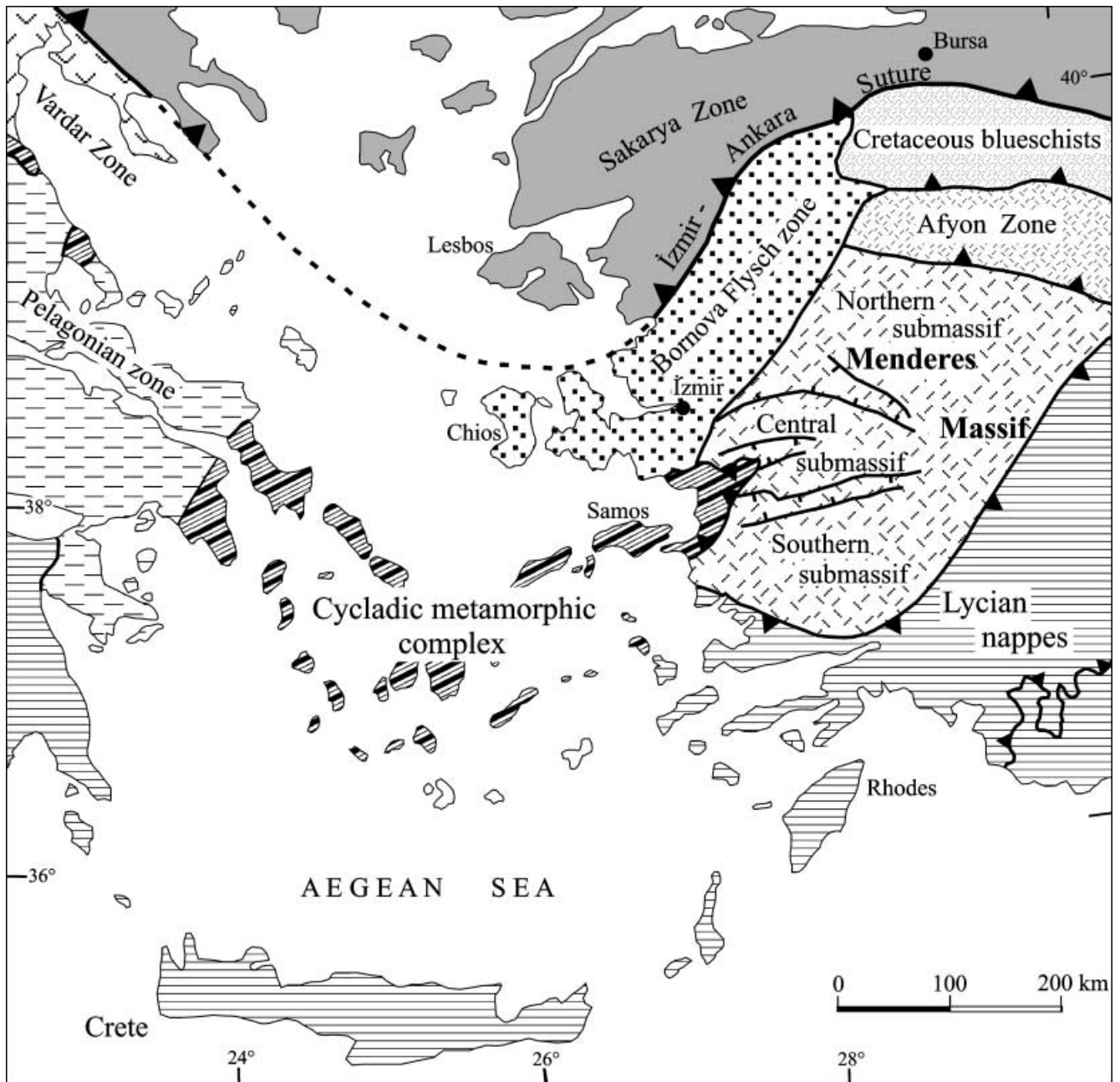


Fig. 1 Tectonic map of the Aegean region showing the setting of the Menderes Massif

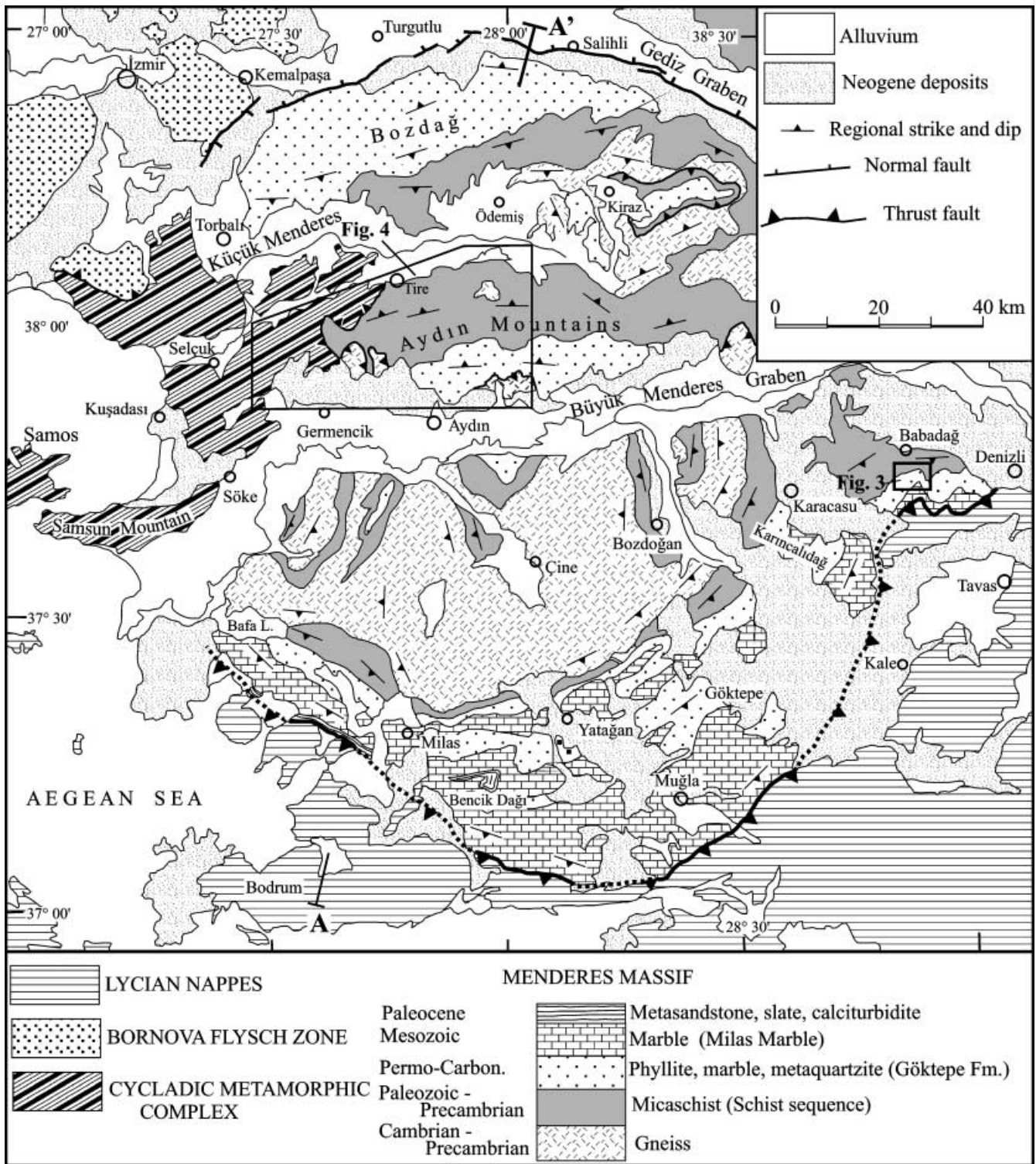


Fig. 2 Geological map of the Menderes Massif (compiled from Graciansky 1966; Çağlayan et al. 1980; Okay 1985; Dora et al. 1990, 1997; Candan and Kun 1991). For the cross section A–A' see Fig. 8. The detailed geology of the framed areas is shown in Figs. 3 and 4

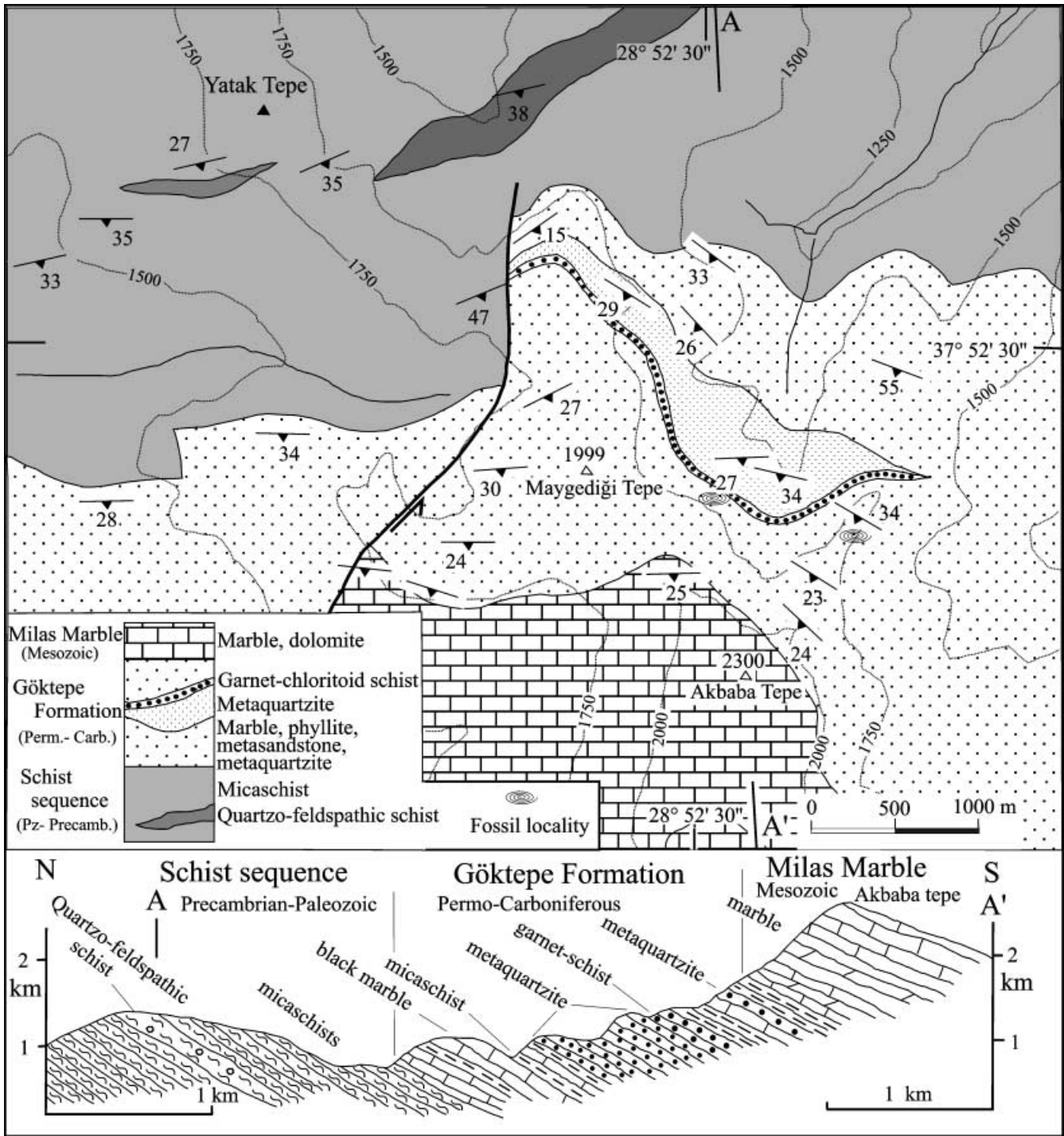
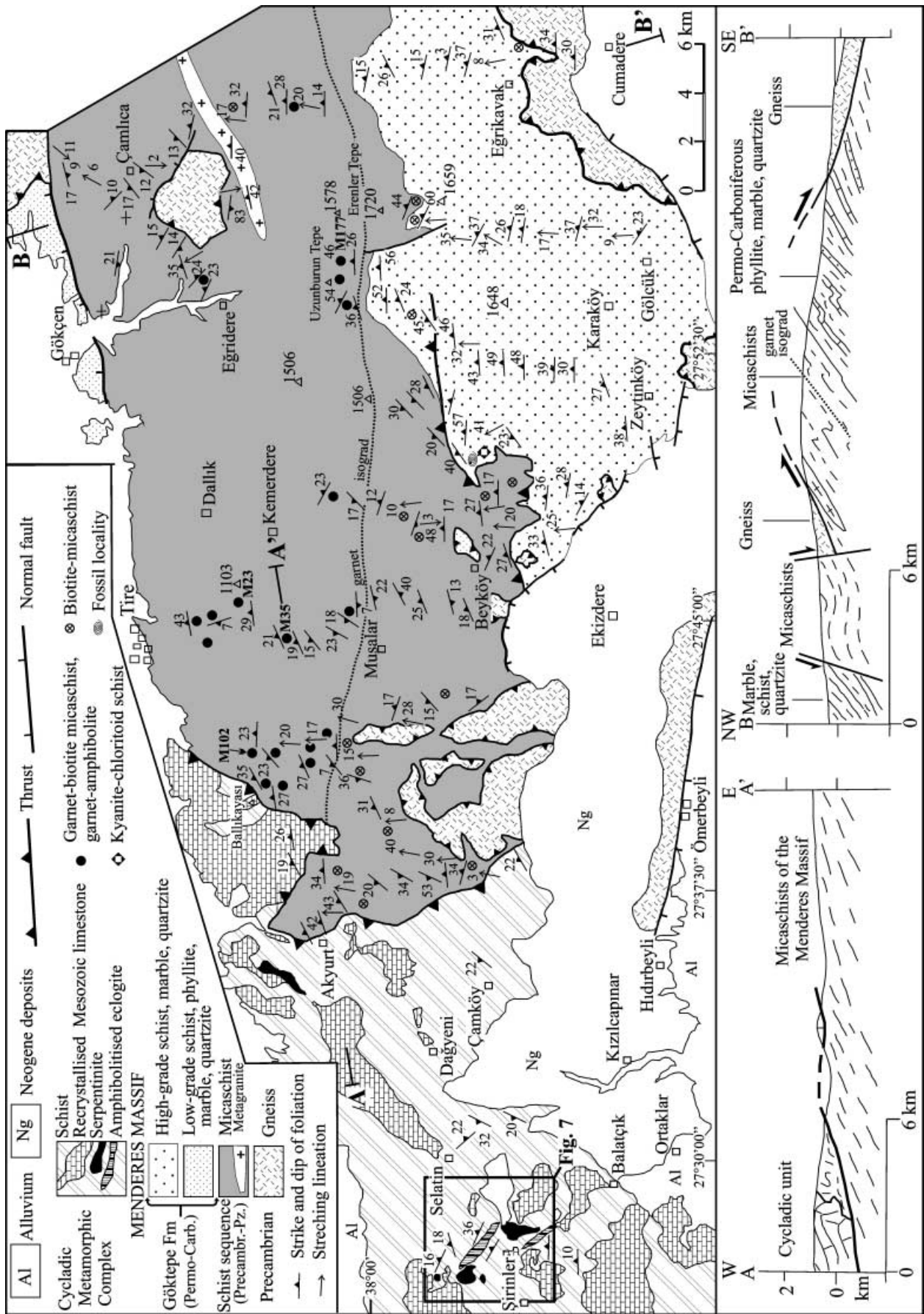


Fig. 3 Geological map and cross section of the Babadağ region in the Southern submassif. For location, see Fig. 2

Fig. 4 Geological map and cross sections of the Aydin mountains based on this study, Scotford (1969), Ercan et al. (1986), and Candan et al. (1992). The map also shows the distribution of the garnet- and biotite-bearing specimens with the numbers of the analysed specimens indicated. For location, see Fig. 2



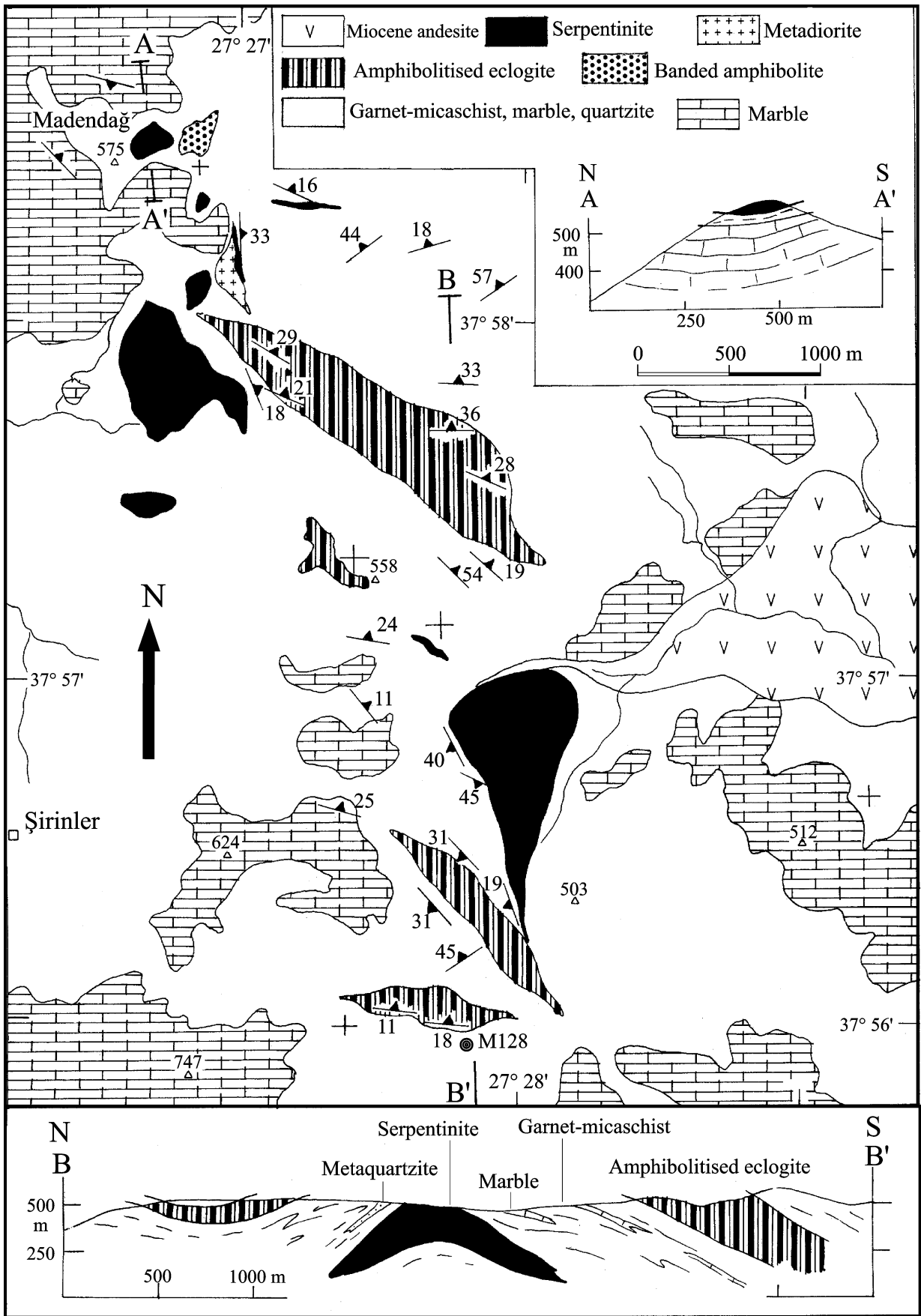


Fig. 7 Geological map and cross section of the region east of Selçuk. For location, see Fig. 4

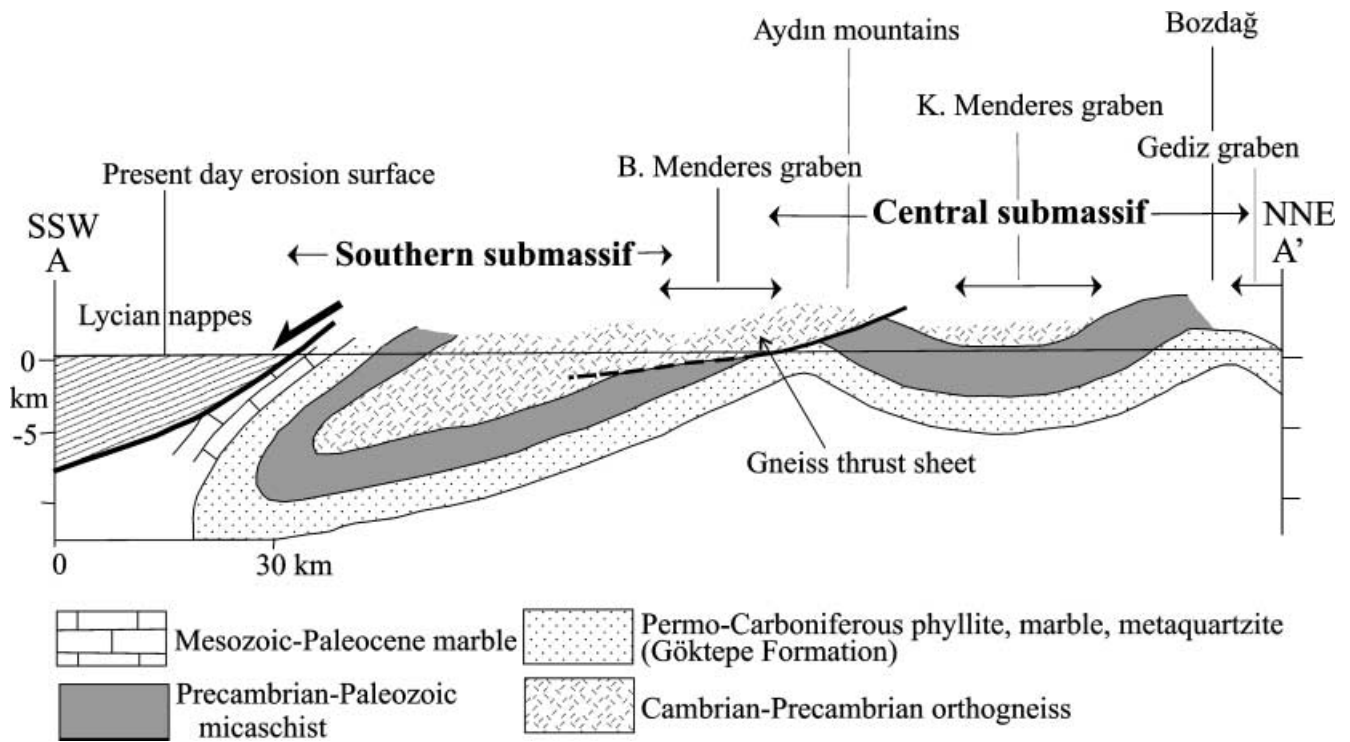


Fig. 8 Highly simplified north-south crustal-scale cross section from the Menderes Massif illustrating the proposed recumbent fold structure. The thrusts within the recumbent fold and the Neogene grabens, which have sedimentary infills of less than 1.5 km (Paton 1992; Cohen et al. 1995), are omitted for clarity. For the approximate location of the section, see Fig. 2