

ERRATUM

# When morphine does not work

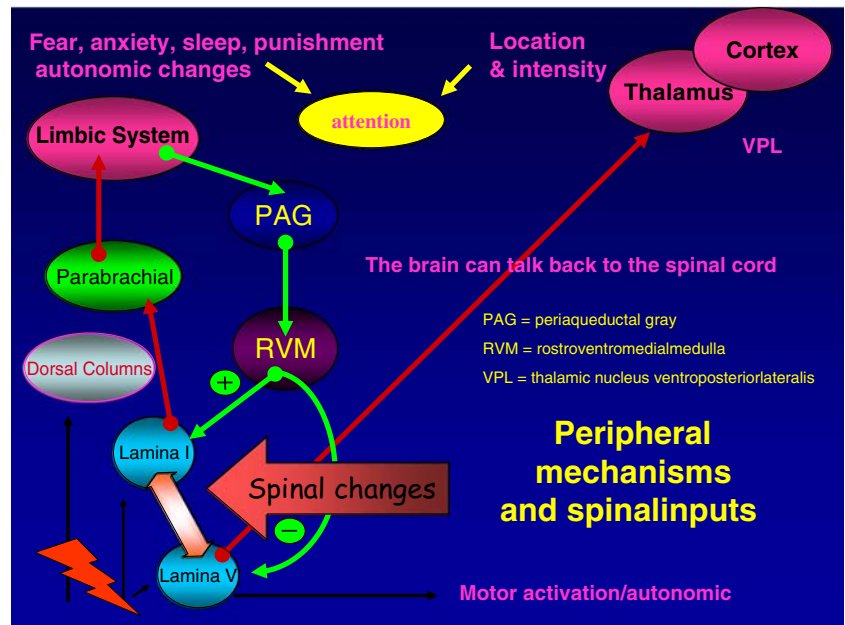
Marie Fallon

Published online: 29 May 2008  
© Springer-Verlag 2008

**Erratum to: Support Care Cancer**  
**DOI 10.1007/s00520-008-0402-8**

The Legend of Fig. 2 was incorrect. The revised version is given here.

**Fig. 2** Brain and spinal cord communication (personal communication from Prof Anthony Dickenson)



The online version of this article can be found at <http://dx.doi.org/10.1007/s00520-008-0402-8>.

M. Fallon (✉)  
Edinburgh Cancer Research Centre, Western General Hospital,  
University of Edinburgh,  
Crewe Road,  
Edinburgh EH4 2XR, UK  
e-mail: Marie.Fallon@ed.ac.uk