

“The sensitivity of new color systems in blood-flow diagnosis: the maximum entropy method and angiocolour comparative in vitro flow measurements to determine sensitivity,” by C. Sohn and H.P. Weskott (Surg Endosc 11: 1040–1044)

In this article that appeared in the October issue of *Surgical Endoscopy*, three figures that should have appeared in color appeared in black and white. The figures are reprinted here in color. The publisher apologizes for any inconvenience.

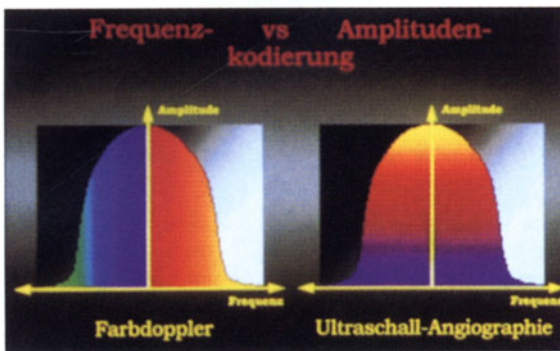


Fig. 1. Comparison of principle of power Doppler and conventional color Doppler imaging.

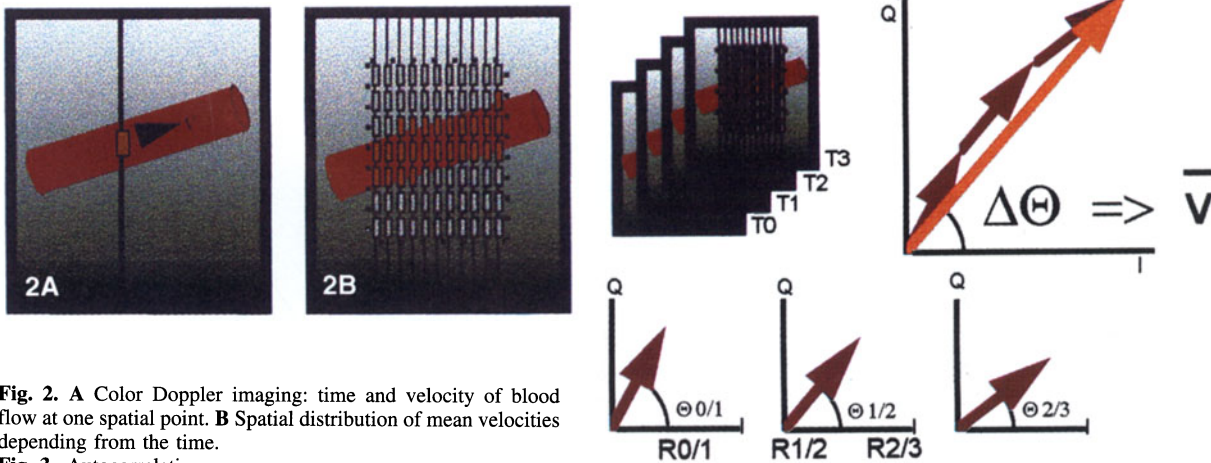


Fig. 2. A Color Doppler imaging; time and velocity of blood flow at one spatial point. B Spatial distribution of mean velocities depending from the time.  
Fig. 3. Autocorrelation.