



Correction to: Diagnosing Skull fracture in children with closed head injury using point-of-care ultrasound vs. computed tomography scan

Afsaneh Dehbozorgi¹ · Razieh Sadat Mousavi-Roknabadi¹ · Seyed Rouhollah Hosseini-Marvast^{1,2} · Mehrdad Sharifi¹ · Robab Sadegh¹ · Faramarz Farahmand¹ · Fatemeh Damghani¹

Published online: 19 November 2020

© Springer-Verlag GmbH Germany, part of Springer Nature 2020

Correction to: European Journal of Pediatrics

<https://doi.org/10.1007/s00431-020-03851-w>

The authors regret that the original published version of the above article contains errors on Figs. 1 and 2. In Fig. 1, the data originally read, “Excluded (n=414)” should have been “Excluded (n=410)” and in Fig. 2, the y-axis of the image should have a legend of “Sensitivity”. The correct figures are shown as follows:

The online version of the original article can be found at <https://doi.org/10.1007/s00431-020-03851-w>

✉ Seyed Rouhollah Hosseini-Marvast
hoseinmr@sums.ac.ir

Afsaneh Dehbozorgi
dehbozorgia@sums.ac.ir

Razieh Sadat Mousavi-Roknabadi
mousavi_razieh@sums.ac.ir

Mehrdad Sharifi
m_sharifi@sums.ac.ir

Robab Sadegh
sadeghrobab@yahoo.com

Faramarz Farahmand
frama1347@yahoo.com

Fatemeh Damghani
dr.f.damghani@gmail.com

¹ Emergency Medicine Department, Faculty of Medicine, Shiraz University of Medical Sciences, Shiraz, Iran

² Emergency Medicine Department, Faculty of Medicine, Namazi Hospital, Shiraz University of Medical Sciences, Shiraz 7193711351, Iran

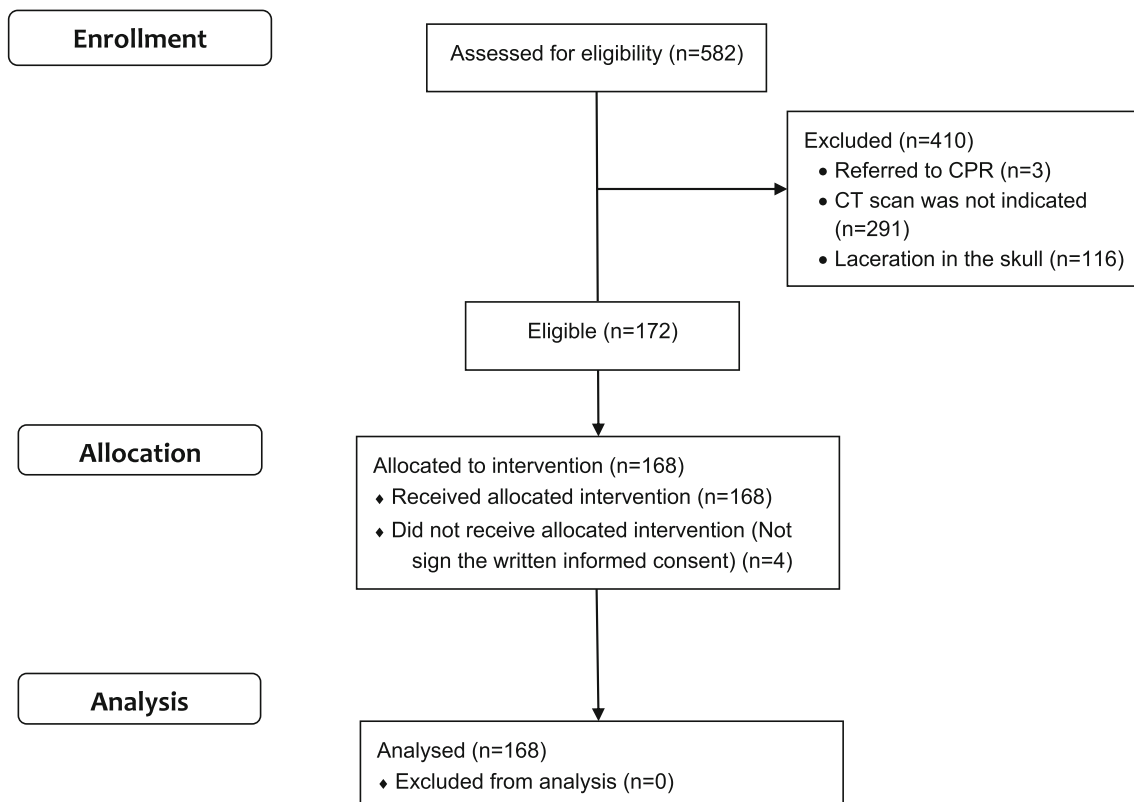


Fig. 1 Flow diagram of enrolled patients

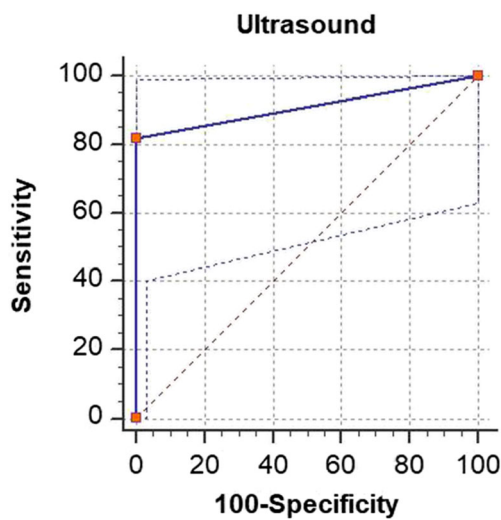


Fig. 2 ROC curve of point-of-care ultrasound in diagnosis of skull fracture in children with closed head injury in comparison with CT scan. Area under the curve is 0.9 (95%CI, 0.85–0.94, $P < 0.0001$)

Publisher's note Springer Nature remains neutral with regard to jurisdictional claims in published maps and institutional affiliations.