




Prognostic implications of surgical specimen quality on the oncological outcomes of open and laparoscopic surgery in mid and low rectal cancer

Vicente Pla-Martí^{1,2} · José Martín-Arévalo¹ · David Moro-Valdezate^{1,2}  · Stephanie García-Botello^{1,2} · Leticia Pérez-Santiago¹ · María Lapeña-Rodríguez¹ · Mireia Bauzá-Collado¹ · Marisol Huerta³ · Susana Roselló-Keränen^{3,4} · Alejandro Espí-Macías^{1,2}

Received: 30 April 2021 / Accepted: 6 October 2021
© The Author(s) 2021

Abstract

Purpose Determine differences in pathologic outcomes between laparoscopic (LAP) and open surgery (OPEN) for mid and low rectal cancer and its influence in long-term oncological outcomes.

Methods Retrospective case matched study at a tertiary institution. Adults with rectal cancer below 12 cm from the anal verge operated between January 2005 and September 2018 were included. Primary outcomes were quality of specimen, overall survival (OS), disease-free survival (DFS), and local recurrence (LR).

Results The study included 311 patients, LAP = 108 (34.7%), OPEN = 203 (65.3%). A successful resection was accomplished in 81% of the LAP group and in 84.5% of the OPEN ($p = 0.505$). No differences in free distal margin (LAP = 100%, OPEN = 97.5%; $p = 0.156$) or circumferential resection margin (LAP = 95.2%, OPEN = 93.2%; $p = 0.603$) were observed. However, mesorectum quality was incomplete in 16.2% for LAP and in 8.1% for OPEN ($p = 0.048$). OS was 91.1% for LAP and 81.1% for OPEN ($p = 0.360$). DFS was 81.4% for LAP and 77.5% for OPEN ($p = 0.923$). Overall, LR was 2.3% without differences between groups.

Conclusions Laparoscopic approach could affect the quality of surgical specimen due to technical aspects. However, if principles of surgical oncology are respected, minor pathologic differences in the quality of the mesorectum may not influence on the long-term oncological outcomes.

Keywords Rectal neoplasms · Laparoscopy · Colorectal surgery · Survival

✉ David Moro-Valdezate
david.moro@uv.es

Vicente Pla-Martí
vplamarti@yahoo.es

José Martín-Arévalo
martin_jose@gva.es

Stephanie García-Botello
stephaniegarciabotello@gmail.com

Leticia Pérez-Santiago
lety_stn@hotmail.com

María Lapeña-Rodríguez
maria.lap.rod@gmail.com

Mireia Bauzá-Collado
mbauzacollado@gmail.com

Marisol Huerta
mhuerta@incliva.es

Susana Roselló-Keränen
srosello@incliva.es

Alejandro Espí-Macías
alejandro.espi@uv.es

¹ Colorectal Surgery Unit, Department of General and Digestive Surgery, Biomedical Research Institute INCLIVA, Hospital Clínico Universitario, Av. Blasco Ibáñez, 17. 46010, Valencia, Spain

² Department of Surgery, Universidad de Valencia, Valencia, Spain

³ Department of Medical Oncology, INCLIVA Biomedical Research Institute, University of Valencia, Valencia, Spain

⁴ Instituto de Salud Carlos III, CIBERONC, Valencia, Spain

Introduction

Surgical resection remains the treatment of choice for rectal cancer. Outcomes have improved significantly in the last decades since Heald described the principles of total mesorectal resection [1]. This change in surgical technique allowed a decrease in local recurrence (LR) and functional results improvement. The multidisciplinary management has been another essential aspect that has improved the treatment of these patients. In this sense, the role of the pathologist auditing the quality of the surgical specimen is highly relevant. The quality of the mesorectum, the circumferential resection margin (CRM), and distal margin (DM) determine the oncological results such as overall survival (OS), disease free survival (DFS), and LR [2].

The evolution of laparoscopic surgical approach has allowed using minimally invasive techniques in an increasing number of complicated procedures. The laparoscopic approach offers several advantages such as early mobilization, shorter length of stay, earlier recovery of normal functions, less postoperative pain, and better cosmetic results [3, 4]. However, concerns about safety in oncological outcomes of laparoscopic approach remain in patients with rectal cancer, due to the technical complexity of surgery in the pelvis and the difficulties to control locally the tumor. Although several randomized controlled trials (RCTs) showed similar oncologic results in laparoscopy compared with open surgery [5–7], the two most recent RCTs [8, 9] and a systematic review found contradictory results and placed previous conclusions under debate [10].

The primary endpoint of this study was to assess the quality of the specimen in laparoscopic and open rectal cancer resections and its influence in long-term oncological outcomes (LR, OS, and DFS).

Material and methods

An observational retrospective case matched study was carried out in patients with mid and lower third rectal cancer undergoing surgery with curative intent between January 2005 and December 2017. The pathological and the oncological outcomes of the laparoscopic surgery (LAP) were compared with those of the open approach (OPEN).

Data source

A retrospective analysis of a prospective database was conducted. The complete medical history and the medical records of primary care of each patient were reviewed.

The open cases were matched to laparoscopic cases by a propensity score analysis to obtain comparable groups of patients. The study was approved by the local Ethics Committee.

Patients

The inclusion criteria were age over 18 years with adenocarcinoma of the rectum located by rigid proctoscopy at or below 12 cm from the anal verge, with stages I, II, and III. Exclusion criteria were the transanal surgical approach, patients who underwent palliative surgery, and clinical stage IV.

Neoadjuvant chemoradiation therapy was indicated in those patients at high risk of presenting LR (T4 or CRM ≤ 2 mm at MRI assessment). The surgical techniques were low anterior resection (LAR) and extralevator abdominoperineal resection (APR) following strictly the oncological principles of TME in all cases. Dedicated colorectal surgeons with more than 10 years of experience performed all surgeries.

Outcome variables

The primary outcomes were quality of the specimen, OS, DFS, and LR at 5 years. Quality of the mesorectum was classified as follows: *Complete*, intact mesorectum with only minor irregularities of a smooth mesorectal surface. No defect is deeper than 5 mm, and there is no coning toward the distal margin of the specimen. There is a smooth circumferential resection margin on slicing; *Nearly-complete*, moderate bulk to the mesorectum, but irregularity of the mesorectal surface. At no site is the muscularis propria visible, with the exception of the insertion of the levator muscles; or *Incomplete*, little bulk to mesorectum with defects down onto muscularis propria and/or very irregular circumferential resection margin [11]. Specimen processing and assessment was performed by the same team of pathologists throughout the whole study period using a standardized procedure after proper training.

CRM was considered as positive when the distance between the surgical resection margin and the deepest cancer invasion was ≤ 1 mm. Lymph node yield, proximal, and DM were recorded. “*Successful resection*” was considered when surgical specimen showed negative CRM, negative DM (> 1 cm), and complete or near complete mesorectum. The follow-up protocol was made according to the current clinical guidelines. The patients with stage-III and those with stage-II at high risk of local or distal recurrence received postoperative chemotherapy (except contraindications due to comorbidity or serious postoperative complications that delayed recovery beyond 8 weeks).

LR was defined as recurrence within the pelvis and distal recurrence as recurrence outside the pelvis. OS was defined as time from surgery to death for any cause and DFS as time interval between treatment and the date of disease progression, death for any cause, or development of second primary cancer. The proof of life was based on the health affiliation records.

Study variables

The variables analyzed were age, sex, body mass index (BMI), American Society of Anaesthesiologist (ASA) score, Charlson comorbidity index, clinical stage, neoadjuvant chemoradiotherapy, and surgical approach. Peri-operative data included blood transfusion, operative time, and length of stay. Pathological data included CRM, DM clearance, quality of the mesorectal excision, and lymph node harvest. Postoperative morbidity was recorded following Clavien-Dindo classification. Perioperative death was considered as fatal outcome within 30 postoperative days. The outcome variables included postoperative complications, mortality, successful resection, OS, DFS, and LR.

Analysis

Descriptive analysis was driven for all the variables. Normality for quantitative variables was assessed with the Kolmogorov-Smirnoff test. Parametric and non-parametric tests were used based in normality of quantitative variable. Data were reported as median and range in non-normal quantitative variables and mean with standard deviation in otherwise. Five-year OS, DFS, and LR were analyzed using Kaplan–Meier with log rank test. OS and DFS were compared between both surgical approaches. Statistical significance for *p*-value was set at 0.05.

A propensity score matching was used to minimize potential selection bias. Two patients in the open approach were matched to each individual in the laparoscopic group. The confounding variables to calculate the propensity score were age, sex, ASA score, neoadjuvant treatment, Charlson comorbidity index, and oncologic stage. Caliber of 0.2 was used [12, 13] (Fig. 1).

Statistic software used was SPSS v25 (IBM Corp., Armonk, NY, USA) and R (3.2.0) for statistical analyses (R Foundation for Statistical Computing, Vienna, Austria, 2013). *PsMatching* script of R integrated in SPSS was used to assess the propensity score.

Results

During the study period, 311 patients were included and underwent elective curative surgery. The minimum follow-up of the series was 3 years. There were two cases lost to

follow-up due to change of district of residence. Clinical and demographic characteristics are summarized in Table 1. A total of 108 (34.7%) patients underwent LAP and 203 OPEN surgery. The median follow-up was 63 months (range, 164 months). Throughout the study, the LAP approach increased significantly ($p < 0.001$), with 80% of laparoscopic surgeries performed in the latter 5 years. Conversion to open surgery was necessary in 8 cases (7.41%) and these patients were assigned to the LAP group. All cases of conversions were due to difficulties during dissection of the distal rectum.

Baseline information between the two groups was similar except shorter operative time ($p < 0.001$), higher rate of diverting ileostomies ($p < 0.001$) (odds ratio, 1.383; 95% confidence interval 1.153–1.659), and a lower rate of neoadjuvant treatment in the OPEN than in the LAP group ($p = 0.003$) (OR 1.611; 95% CI 1.188–2.186). Overall morbidity was similar between groups. The length of stay of the LAP group was significantly shorter compared to the OPEN group (7 vs 9 days, $p = 0.001$).

There were no significant differences in the number of patients receiving adjuvant chemotherapy between the LAP group (49.1%) and the OPEN group (39.4%) ($p = 0.118$).

Pathologic outcomes

Overall, a successful resection was accomplished in 82.3% of patients, 12.5% presented an incomplete mesorectal excision, DM was involved in 1.3% of the cases and positive CRM was observed in 6.8%. There were no significant differences in the pathological outcomes between LAP and OPEN surgery (Table 2).

Long-term outcomes

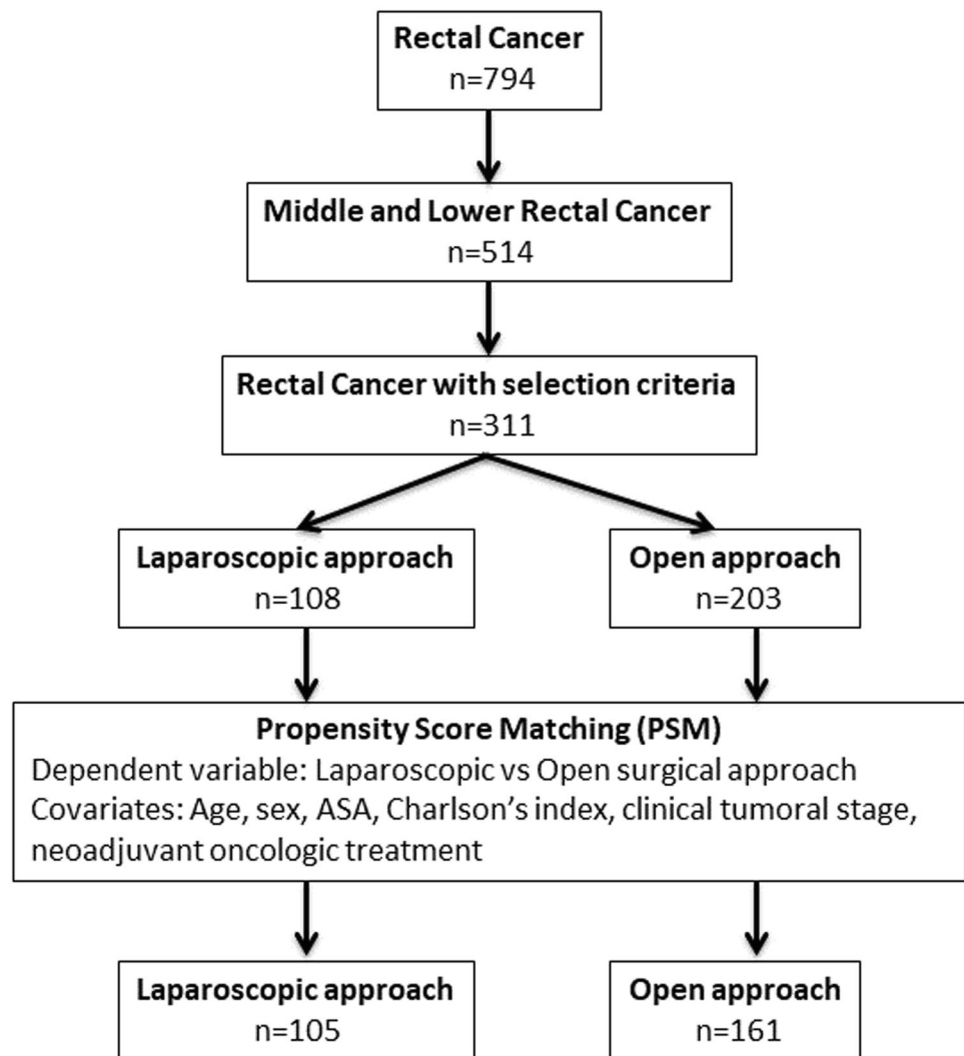
Five-year OS was 92.7% for LAP and 88.6% for OPEN ($p = 0.29$). Interestingly, in the analysis of staging groups, no differences between laparoscopic and open resection were observed in OS and DFS.

Five-year DFS was 88.6% for LAP and 81% for OPEN ($p = 0.83$). Overall, LR was 2.25%, development of distant metastasis was found in 15.43% of the patients, and 0.3% of them had peritoneal carcinomatosis, without statistical differences between LAP and OPEN ($p = 0.27$, $p = 0.75$, and $p = 1.00$, respectively).

Outcomes after propensity score matching

After adjusting the cases through the propensity score matching, we created two new groups of patients: 161 cases OPEN vs 105 LAP (Fig. 1). Both groups were completely comparable after case matching (Table 1).

Fig. 1 Flowchart of study population selection and matching by propensity score



Successful resection was achieved in 84.5% of the patients in the OPEN group and in 81% in the LAP group ($p=0.51$). No differences in positive DM or CRM were observed. However, the quality of the mesorectum was incomplete in 16.2% for the LAP group and 8.1% for the OPEN one ($p=0.048$) (Table 2).

Fifty-one patients (48.6%) in the LAP group and 70 patients (43.5%) in the OPEN group received adjuvant chemotherapy. This difference was not statistically significant ($p=0.451$).

Five-year OS was 92.5% in the LAP group and 88.2% in the OPEN one ($p=0.28$) (Fig. 2). Five-year DFS was 81.4% for laparoscopic and 80% for open surgery ($p=0.98$) (Fig. 3). LR was 2.3%, systemic recurrence was found in 16.2% of the patients, and peritoneal carcinomatosis in 0.4% of them without statistical differences between LAP and OPEN ($p=0.41$, $p=1.00$, and $p=1.00$, respectively).

Discussion

The results of the present study advocated that in unselected patients with stage I–III mid or low rectal cancer LAP was associated with similar oncological outcomes than OPEN resection. The first randomized trials (CLASSIC, COLOR II, and COREAN) comparing laparoscopic with open rectal resection obtained similar results. In these studies, no differences were found in the quality of the mesorectum or in the DM or CRM between both groups. Short- and long-term outcomes showed no differences in morbidity, OS, DFS, or LR [3–7, 14, 15]. Consequently, for treatment of rectal cancer, laparoscopic approach seemed to be as safe as open surgery, with short-term benefits or even less morbidity [16]. Therefore, its use has increased in recent years. In our experience the laparoscopic modality has become the approach of choice since

Table 1 Demographic, clinical, and histological characteristics of the patients (overall series and post-propensity score matching)

	Overall series			Propensity score matched pairs		
	OPEN 203 (65.27)	LAP 108 (34.73)	<i>p</i> value	OPEN 161 (60.53)	LAP 105 (39.47)	<i>p</i> value
Age (years)*	70 (48)	66 (51)	0.050	67 (47)	66 (51)	0.369
Sex (male)	131 (64.5)	74 (68.5)	0.531	108 (61.1)	73 (69.5)	0.689
Charlson score	5 (10)	5 (10)	0.567	5(10)	5(10)	0.792
ASA score			0.980			0.977
I	17 (8.4)	9 (8.3)		15 (9.3)	9 (8.6)	
II	106 (52.2)	56 (51.9)		85 (52.8)	54 (51.4)	
III	77 (37.9)	42 (38.9)		59 (36.6)	41 (39)	
IV	3 (1.5)	1 (0.9)		2 (1.2)	1 (1)	
BMI (kg/m²)*	26.48 (38.71)	25.37 (30.72)	0.115	26.17 (38.71)	25.43 (30.72)	0.118
Site of tumor			0.721			0.900
Middle rectum (7–11 cm)	94 (46.3)	53 (49.1)		76 (47.2)	51 (48.6)	
Distal rectum (0–6 cm)	109 (53.7)	55 (50.9)		85 (52.8)	54 (51.4)	
cT stage			0.266			0.472
T1	19 (9.4)	5 (4.6)		14 (8.7)	5 (4.8)	
T2	38 (18.7)	18 (16.7)		26 (16.1)	17 (16.2)	
T3	146 (71.9)	85 (78.7)		121 (71.2)	83 (79)	
Clinical stage			0.115			0.690
I	67 (33)	25 (23.1)		43 (26.7)	25 (23.8)	
II	36 (17.7)	17 (15.7)		30 (18.6)	17 (16.2)	
III	100 (49.3)	66 (61.1)		88 (54.7)	63 (60)	
Primary anastomosis	143 (70.4)	81 (75)	0.428	118 (73.3)	79 (75.2)	0.418
Operative time (minutes)*	195 (340)	240 (400)	< 0.001	205 (335)	240 (400)	0.002
Diverting stoma	133 (65.5)	47 (43.5)	< 0.001	109 (67.7)	47 (44.8)	< 0.001
Preoperative blood transfusion	23 (11.3)	9 (8.3)	0.441	18 (11.2)	9 (8.6)	0.540
Postoperative blood transfusion	35 (17.2)	13 (12)	0.252	27 (16.8)	13 (12.4)	0.382
Lymph nodes examined*	17 (54)	14.5 (64)	0.102	17 (54)	14 (64)	0.056
Pathological stage			0.409			0.640
0	13 (6.4)	11 (10.2)		12 (7.5)	11 (10.5)	
I	79 (38.9)	36 (33.3)		54 (33.5)	36 (34.3)	
II	48 (23.6)	28 (25.9)		43 (26.7)	27 (25.7)	
III	63 (31)	33 (30.5)		52 (32.3)	31 (29.6)	
Neoadjuvant treatment	74 (36.5)	59 (54.6)	0.003	72 (44.7)	57 (54.3)	0.134
Postoperative Complications	45 (22.2)	19 (17.6)	0.379	33 (20.5)	19 (18.1)	0.752
Mortality < 30 days	10 (4.9)	4 (3.7)	0.777	6 (3.7)	4 (3.8)	1
Hospital stay (days)*	9 (59)	7 (84)	0.001	9 (59)	7 (84)	0.004

Values in parentheses are percentages

BMI body mass index, ASA American Society of Anaesthesiology

*Median (range)

2013, and it have been used in 80% of the cases in the last 5 years.

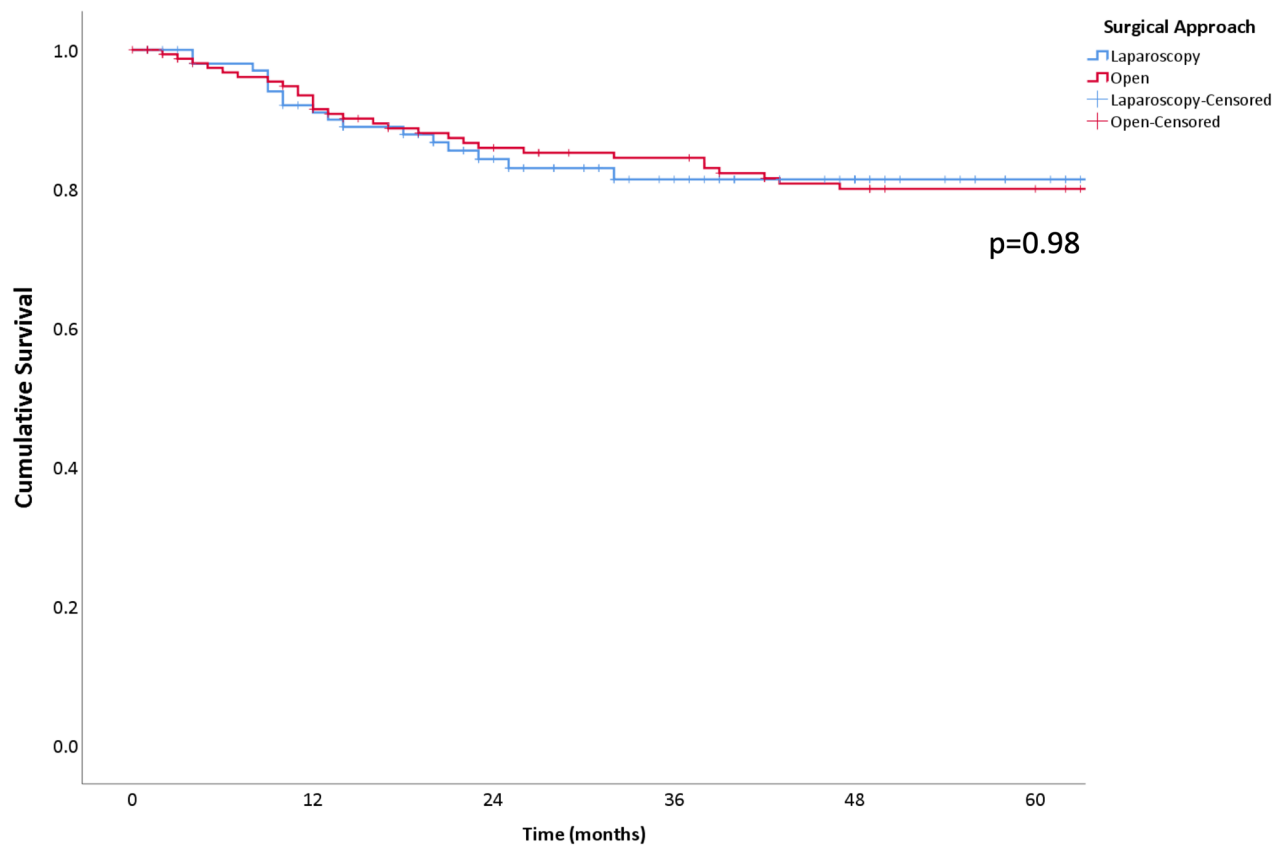
More recent phase III trials have questioned again the noninferiority of laparoscopic vs open surgery in the treatment of rectal cancer. ACOSOG Z6051 study included 486 patients with stage II–III tumors located at 12 cm or less above the anal margin who underwent surgery after

neoadjuvant treatment. Satisfactory resection was accomplished in 82% of the patients operated on a minimally invasive approach vs 87% of those operated on with open surgery [8]. Similarly, in the Australian study ALaCaRT, which included 475 patients, the laparoscopic group showed 82% of successful resections vs 89% in the open surgery group [9]. The definition of a satisfactory surgical result in both

Table 2 Quality of the surgical specimen

	Overall series			Propensity score matched pairs		
	OPEN 203 (65.27)	LAP 108 (34.73)	<i>p</i> value	OPEN 161 (60.53)	LAP 105 (39.47)	<i>p</i> value
Quality of mesorectal excision: incomplete	21 (10.3)	18 (16.7)	0.149	13 (8.1)	17 (16.2)	0.048
Positive distal margin	4 (2)	0	0.302	4 (2.5)	0	0.156
Positive circumferential resection margin	15 (7.4)	6 (5.6)	0.640	11 (6.8)	5 (4.8)	0.603
Successful resection	169 (83.3)	87 (80.6)	0.640	136 (84.5)	85 (81)	0.505

Values in parentheses are percentages



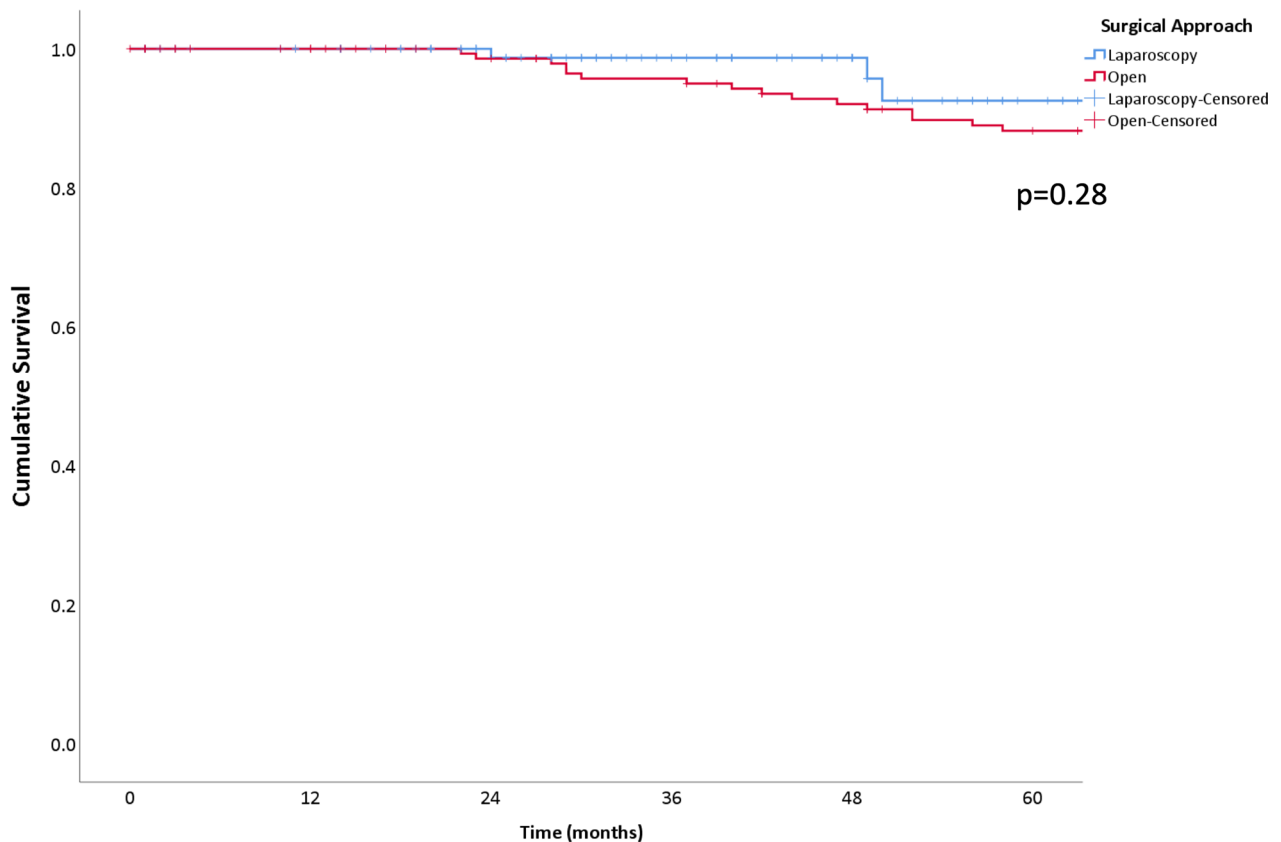
Number at risk	0	12	24	36	48	60
Laparoscopy	105	88	65	45	29	19
Open	161	135	121	116	113	101

Fig. 2 Kaplan–Meier curves of the overall survival after matching cases

studies was determined by the surgical specimen quality: completely satisfactory mesorectum, a clear DM, and a clear CRM. Both studies had high technical quality of the surgery, as shown by the low conversion rate, the high sphincter-sparing surgery rate, and the few general or anastomotic complications. The use of laparoscopic surgery compared with open did not meet the condition for noninferiority for

pathologic outcomes in both studies; consequently, these results did not show enough evidence to recommend the use of laparoscopic resection routinely.

However, the subsequently oncologic results published from these studies were similar for both surgical approaches. Two-year DFS and LR results from ACOSOG Z6051 trial have been recently reported [17]. Differences



Number at risk	0	12	24	36	48	60
Laparoscopy	105	97	75	53	33	19
Open	161	149	139	133	123	113

Fig. 3 Kaplan–Meier curves of the disease-free survival after matching cases

between the LAP and the OPEN group in DFS (79.5 vs 83.2%), LR (2.1 vs 1.8%), and distant recurrence (14.6 vs 16.7%) were not found. Similarly, 2-year follow-up outcomes of the ALaCart trial comparing laparoscopic and open surgery for rectal cancer concluded that there were no outstanding differences in LR, DFS, and OS rates [18].

In our series, after adjusting by the propensity score, significant differences in successful resection rates between the two groups were not observed. Quality of the mesorectum was significantly inferior in the laparoscopic group although this difference did not affect the oncological outcomes since the rates of DFS and LR were similar between groups. ALaCaRT trial demonstrated that the lack of successful pathological resection was associated with poorer DFS and was mainly due to an involved CRM. The effect of laparoscopic surgery in LR or OS vanished after adjusting for positive CRM that seemed the better alternative of successful surgery for longer-term results [18]. ACOSOG Z6051 trial also found after multivariable

analysis that the most important factor for an unsuccessful surgery was the positive CRM [17].

It has been stated that both poor mesorectum quality and positive CRM involve a reduced OS and increased LR. There is no doubt that oncological principles must be respected to perform a TME following the anatomical dissection planes to achieve an intact mesorectum. However, when expert surgeons perform laparoscopic rectal resection, obtaining lower rates of complete TME, it is usually due to small lesions in the fascia during the traction maneuvers required to complete the laparoscopic distal dissection and not because of having performed the dissection through an incorrect plane, therefore, may not threaten seriously the prognosis of the patients, especially if the specimen is analyzed by dedicated pathologists meticulously following strict protocols, as in our case. High-quality surgical technique may also yield positive CRM due to the local spread of tumor cells, involving worse LR and DFS outcomes thus being wrongly assigned to the quality of technique. In the risk

model, proposed in one study that assessed and identified predictors of CRM involvement for rectal cancer, the open procedure was an independent risk factor, with a rate of positive CRM of 10.0% compared with 3.9% for the laparoscopic approach ($p < 0.001$) [19]. In a recent Danish study, positive CRM was reported more frequently after open resection (6.3 vs 4.7%; $p = 0.047$). Nevertheless, both a multivariate and a propensity score-matched analysis were not able to demonstrate increased risk of positive CRM after laparoscopic vs open rectal resection [20]. These results were similar to those of the present study, since no differences in the positive CRM between the two groups were found (6.8 OPEN vs 4.8% LAP), and for this reason, no differences in LR or DFS were observed despite the worse quality of the TME in the laparoscopic group. As previously mentioned, these lesions could be developed during the traction and removal maneuvers of the surgical specimen, since in all cases, the embryological plane was respected during dissection, and should not be understood as an incorrect resection plane.

In challenging cases (bulky tumors, lower third location, narrow pelvis, or obese patients), the risk of obtaining a worse pathological outcome is greater. None of the RCTs previously mentioned, nor the present study, analyzed the differences in the pathological results in subgroups of patients with different technical difficulties. Robotic surgery, transanal total mesorectal excision (TaTME), and the design of new instruments could improve surgical specimen quality with good oncological results and allow the use of minimally invasive techniques even in difficult cases.

In the present series, before matching, patients operated on by laparoscopy had better oncological outcomes than those operated by open procedure with differences of 7.6% in DFS and 4.1% in OS. After matching, the differences decreased slightly especially in DFS (1.4%) between both groups. In COLOR II trial, patients with stage III operated laparoscopically showed better rate of DFS than the open surgery group with a difference of 12.9% [6]. A recent Spanish population-based study comparing laparoscopic with open surgery that included 1359 patients showed that laparoscopy was an independent factor for better LR and long-term OS rates in rectal cancer [21]. Other published population-based studies with long-term follow-up reported that the laparoscopic approach had better oncological outcomes than the open surgery [22, 23].

Long-term outcomes could be compromised because the perioperative period and the excision of the primary tumor can promote the development of metastases [24]. Surgery could favor the release of tumor cells into the circulation, decrease antiangiogenic factors, increase growth factors, and cause immunosuppression increasing the risk of recurrence [25]. The postoperative immunosuppression is lower after a laparoscopic colorectal resection. The earlier return to normal levels of lymphocytes in the postoperative period

of laparoscopic surgery suggests an improvement in restoring immune homeostasis, which could enhance antitumor immune response [26].

This study has some limitations. Firstly, it was a single institutional observational retrospective case matched study on a prospective maintained database. The cohort size and the retrospective design of the study could limit the conclusions drawn from the results. Probably, including other institutions in a multicenter study design would have increased the number of patients analyzed and, therefore, the impact of the study.

Secondly, the whole study period was long, with a variation on the indications for the surgical approach over time. Laparoscopic surgery itself and rectal cancer treatment have evolved during this period. The sample size did not allow stratification by year of treatment, so it could not be incorporated in the propensity score to avoid this bias. Furthermore, the heterogeneity of the cases did not permit an exact matching of two cases operated by open surgery for each case operated by laparoscopy. Some other confounding factors may influence our findings despite adjusted propensity score methodology.

Conclusion

In conclusion, in unselected patients with mid or low rectal cancer (stages I–III), the laparoscopic resection showed similar long-term oncological outcomes than the open resection. Regardless of the approach, it is essential to respect the embryologic planes during dissection in order to perform oncologically adequate surgery. The differences in the quality of the mesorectum observed could be due to the traction maneuvers during laparoscopic dissection and for this reason did not compromise the oncologic results. Laparoscopic low anterior resection could be considered the technique of choice in rectal cancer although we must wait for the long-term oncological results of high-quality randomized studies to make a definitive statement.

Funding Open Access funding provided thanks to the CRUE-CSIC agreement with Springer Nature.

Declarations

Ethics approval The study was approved by the local Ethics Committee.

Conflict of interest The authors declare no competing interests.

Open Access This article is licensed under a Creative Commons Attribution 4.0 International License, which permits use, sharing, adaptation, distribution and reproduction in any medium or format, as long

as you give appropriate credit to the original author(s) and the source, provide a link to the Creative Commons licence, and indicate if changes were made. The images or other third party material in this article are included in the article's Creative Commons licence, unless indicated otherwise in a credit line to the material. If material is not included in the article's Creative Commons licence and your intended use is not permitted by statutory regulation or exceeds the permitted use, you will need to obtain permission directly from the copyright holder. To view a copy of this licence, visit <http://creativecommons.org/licenses/by/4.0/>.

References

1. Heald RJ, Ryall RD (1986) Recurrence and survival after total mesorectal excision for rectal cancer. *Lancet* 1(8496):1479–1482
2. Kusters M, Marijnen CAM, van de Velde CJH et al (2010) Patterns of local recurrence in rectal cancer; a study of the Dutch TME trial. *Eur J Surg Oncol* 36(5):470–476
3. Jayne DG, Guillou PJ, Thorpe H et al (2007) Randomized trial of laparoscopic-assisted resection of colorectal carcinoma: 3-year results of the UK MRC CLASICC trial group. *J Clin Oncol* 25(21):3061–3068
4. Van der Pas MH, Haglind E, Cuesta MA et al (2013) Laparoscopic versus open surgery for rectal cancer (COLOR II): short-term outcomes of a randomised, phase 3 trial. *Lancet Oncol* 14(3):210–218
5. Green BL, Marshall HC, Collinson F et al (2013) Long-term follow-up of the Medical Research Council CLASICC trial of conventional *versus* laparoscopically assisted resection in colorectal cancer. *Br J Surg* 100(1):75–82
6. Bonjer HJ, Deijen CL, Abis GA et al (2015) A randomized trial of laparoscopic versus open surgery for rectal cancer. *N Engl J Med* 372(14):1324–1332
7. Jeong SY, Park JW, Nam BH et al (2014) Open versus laparoscopic surgery for mid-rectal or low-rectal cancer after neoadjuvant chemoradiotherapy (COREAN trial): survival outcomes of an open-label, non-inferiority, randomised controlled trial. *Lancet Oncol* 15(7):767–774
8. Fleshman J, Branda M, Sargent DJ et al (2015) Effect of laparoscopic-assisted resection vs open resection of stage II or III rectal cancer on pathologic outcomes the ACOSOG Z6051 randomized clinical trial. *JAMA* 314(13):1346–1355
9. Stevenson AR, Solomon MJ, Lumley JW et al (2015) Effect of laparoscopic-assisted resection vs open resection on pathological outcomes in rectal cancer: the ALaCaRT randomized clinical trial. *JAMA* 314(13):1356–1363
10. Martínez-Pérez A, Carra MC, Brunetti F, de'Angelis N (2017) Pathologic outcomes of laparoscopic vs open mesorectal excision for rectal cancer a systematic review and meta-analysis. *JAMA Surg* 152(4):e165665
11. Nagtegaal ID, van de Velde CJ, van der Worp E, Kapiteijn E, Quirke P, van Krieken JH, Cooperative Clinical Investigators of the Dutch Colorectal Cancer Group (2002) Macroscopic evaluation of rectal cancer resection specimen: clinical significance of the pathologist in quality control. *J Clin Oncol* 20(7):1729–34. <https://doi.org/10.1200/JCO.2002.07.010>
12. Austin PC (2014) A comparison of 12 algorithms for matching on the propensity score. *Stat Med* 33(6):1057–69. <https://doi.org/10.1002/sim.6004>
13. Austin PC (2011) Optimal caliper widths for propensity-score matching when estimating differences in means and differences in proportions in observational studies. *Pharm Stat* 10(2):150–61. <https://doi.org/10.1002/pst.433>
14. Guillou PJ, Quirke P, Thorpe H et al (2005) Short-term endpoints of conventional versus laparoscopic-assisted surgery in patients with colorectal cancer (MRC CLASICC trial): multicentre, randomised controlled trial. *Lancet* 365(9472):1718–1726
15. Kang S-B, Park JW, Jeong S-Y et al (2010) Open versus laparoscopic surgery for mid or low rectal cancer after neoadjuvant chemoradiotherapy (COREAN trial): short-term outcomes of an open-label randomised controlled trial. *Lancet Oncol* 11(7):637–645
16. Jiang J, Jiang K, Dai Y et al (2015) Laparoscopic versus open surgery for mid-low rectal cancer: a systematic review and meta-analysis on short- and long-term outcomes. *J Gastrointest Surg* 19(8):1497–1512
17. Fleshman J, Branda M, Sargent DJ et al (2019) Disease-free survival and local recurrence for laparoscopic resection compared with open resection of stage II to III rectal cancer. Follow-up results of the ACOSOG Z6051 randomized controlled trial. *Ann Surg* 269(4):589–595
18. Stevenson ARL, Solomon MJ, Brown CSB et al (2019) Disease-free survival and local recurrence after laparoscopic-assisted resection or open resection for rectal cancer: the Australasian laparoscopic cancer of the rectum randomized clinical trial. *Ann Surg* 269(4):596–602
19. Warriar SK, Kong JC, Guerra GR et al (2018) Risk factors associated with circumferential resection margin positivity in rectal cancer: a binational registry study. *Dis Colon Rectum* 61(4):433–440
20. Klein MF, Vogelsang RP, Gögenur I (2019) Circumferential resection margin after laparoscopic and open rectal resection: a nationwide propensity score matched cohort study. *Dis Colon Rectum* 62(10):1177–1185
21. Manchon-Walsh P, Aliste L, Biondo S et al (2019) A propensity-score-matched analysis of laparoscopic vs open surgery for rectal cancer in a population-based study. *Colorectal Dis* 21(4):441–450
22. Draeger T, Völkel V, Gerken M, Klinkhammer-Schalke M, Fürst A (2018) Long-term oncologic outcomes after laparoscopic versus open rectal cancer resection: a high-quality population-based analysis in a Southern German district. *Surg Endosc* 32(10):4096–4104
23. Dobbins TA, Young JM, Solomon MJ (2014) Uptake and outcomes of laparoscopically assisted resection for colon and rectal cancer in Australia: a population-based study. *Dis Colon Rectum* 57(4):415–422
24. Jiang L, Nick AM, Sood AK (2015) Fundamental principles of cancer biology: does it have relevance to the perioperative period? *Curr Anesthesiol Rep* 5(3):250–256
25. Miki C, Hiro J, Ojima E, Inoue Y, Mohri Y, Kusunoki M (2006) Perioperative allogeneic blood transfusion, the related cytokine response and long-term survival after potentially curative resection of colorectal cancer. *Clin Oncol* 18(1):60–66
26. Evans C, Galustian C, Kumar D et al (2009) Impact of surgery on immunologic function: comparison between minimally invasive techniques and conventional laparotomy for surgical resection of colorectal tumors. *Am J Surg* 197(2):238–245

Publisher's note Springer Nature remains neutral with regard to jurisdictional claims in published maps and institutional affiliations.