



Correction to: Heritable and non-heritable uncommon causes of stroke

A. Bersano¹ · M. Kraemer^{2,3} · A. Burlina⁴ · M. Mancuso⁵ · J. Finsterer⁶ · S. Sacco⁷ · C. Salvarani⁸ · L. Caputi¹ · H. Chabriat⁹ · S. Lesnik Oberstein¹⁰ · A. Federico¹¹ · E. Tournier-Lasserre¹² · D. Hunt¹³ · M. Dichgans¹⁴ · M. Arnold¹⁵ · S. Debette¹⁶ · H. S. Markus¹⁷

Published online: 18 June 2020
© Springer-Verlag GmbH Germany, part of Springer Nature 2020

Correction to: Journal of Neurology
<https://doi.org/10.1007/s00415-020-09836-x>

The original version of this article unfortunately contained a mistake. Figure 3 caption is incorrect and co-author name should be E.Tournier-Lasserre.

The correct Fig. 3 caption with figure is placed in the following page.

The original article can be found online at <https://doi.org/10.1007/s00415-020-09836-x>.

✉ A. Bersano
anna.bersano@gmail.com

- ¹ Cerebrovascular Unit, Fondazione IRCCS Istituto Neurologico Carlo Besta, Milan, Italy
- ² Department of Neurology Alfried, Krupp-Hospital, Essen, Germany
- ³ Department of Neurology, Medical Faculty, Heinrich-Heine-University, Düsseldorf, Germany
- ⁴ Neurological Unit, St. Bassano Hospital, Bassano del Grappa, Italy
- ⁵ Department of Clinical and Experimental Medicine, Neurological Institute, University of Pisa, Pisa, Italy
- ⁶ Krankenhaus Rudolfstiftung, Messerli Institute, Vienna, Austria
- ⁷ Department of Neurology, Avezzano Hospital, University of L'Aquila, L'Aquila, Italy
- ⁸ University of Modena and Reggio Emilia, and Azienda USL-IRCCS, Reggio Emilia, Italy
- ⁹ Department of Neurology and CERVCO, DHU Neurovasc, INSERM U1141, University of Paris, Paris, France

- ¹⁰ Department of Clinical Genetics, Leiden University Medical Center, Leiden, The Netherlands
- ¹¹ Department of Medicine, Surgery and Neurosciences, University of Siena, Siena, Italy
- ¹² Department of Genetics, Lariboisière Hospital and INSERM U1141, Paris-Diderot University, Paris, France
- ¹³ MRC Human Genetics Unit, Institute of Genetics and Molecular Medicine, University of Edinburgh, Edinburgh EH4 2XU, UK
- ¹⁴ Institute for Stroke and Dementia Research, Klinikum Der Universität München, Munich, Germany
- ¹⁵ Inserm Centre Bordeaux Population Health (U1219), University of Bordeaux, Bordeaux, France
- ¹⁶ Department of Neurology, INSELSPITAL, University Hospital Bern, Bern, Switzerland
- ¹⁷ Stroke Research Group, Department of Clinical Neurosciences, University of Cambridge, Cambridge, UK

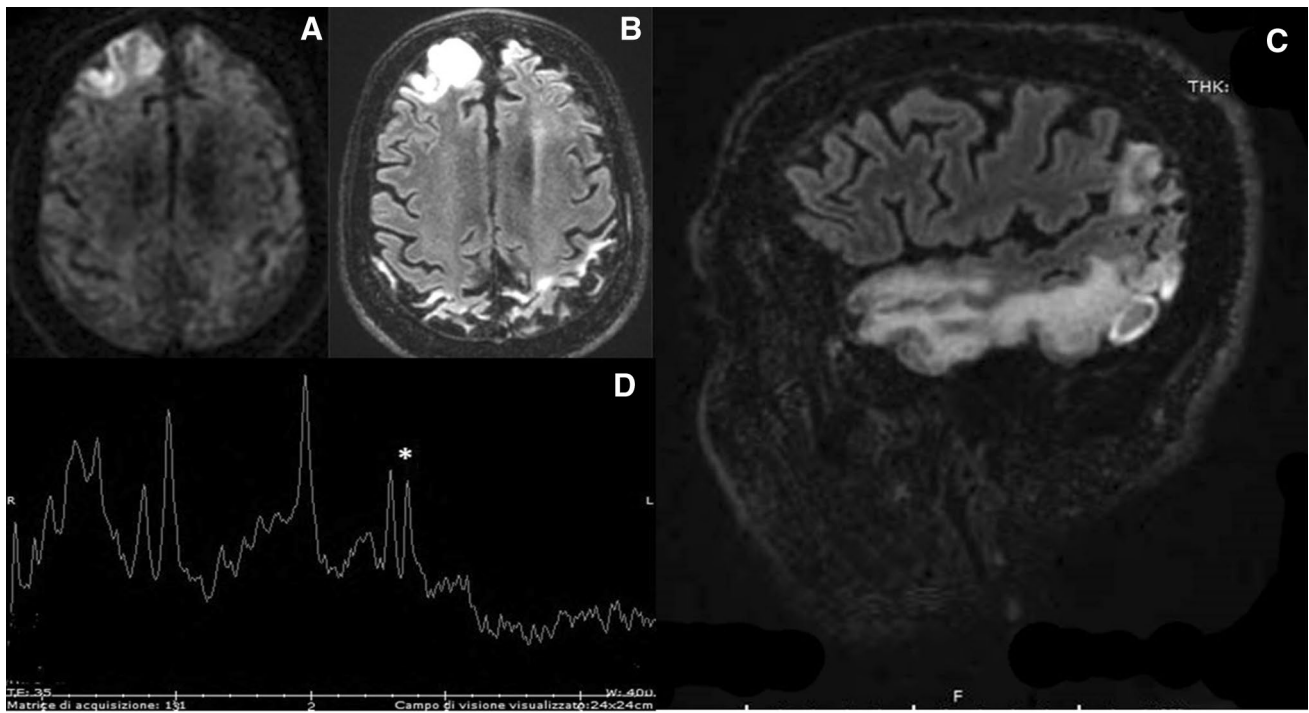


Fig. 3 Cranial magnetic resonance findings of stroke-like episodes in a young man that do not respect the vascular territories of major cerebral arteries or border zones. DWI (**a**) and FLAIR (**b**) sequences reveal an acute stroke-like lesion in the right frontal lobe, with an

older bigger stroke-like lesion in the right temporal lobe also documented (**c**). The asterisk (**d**) shows lactate peak at the proton spectroscopy