



# Common and distinct brain functional alterations in pharmacotherapy treatment-naïve female borderline personality disorder patients with and without auditory verbal hallucinations: a pilot study

Chuanjun Zhuo<sup>1,2,3,4,5,6</sup> · Feng Ji<sup>1</sup> · Xiao Lin<sup>2</sup> · Hongjun Tian<sup>3</sup> · Lina Wang<sup>3</sup> · Yong Xu<sup>4,5</sup> · Wenqiang Wang<sup>6</sup> · Baoliang Zhong<sup>7</sup> · Xiaodong Lin<sup>2</sup>

Received: 7 June 2019 / Accepted: 21 January 2020 / Published online: 3 February 2020  
© The Author(s) 2020

## Abstract

Auditory verbal hallucinations (AVHs) are experienced by approximately 25% of patients with borderline personality disorder (BPD). Despite the high incidence, the pathological features of AVH in BPD remain unclear. This study aimed to investigate whole-brain functional connectivity (FC), as measured by functional connectivity density (FCD), and its relationship with AVH in BPD. 65 pharmacotherapy treatment-naïve female BPD patients (30 with AVH and 35 without AVH), and 35 female healthy controls were investigated. Functional magnetic resonance imaging (fMRI) data were collected to assess whole-brain FC and functional connectivity density mapping (FCDM) was applied to the fMRI data to compute FCD features. Compared to the healthy controls, both BPD groups (BPD–AVH and BPD without AVH) exhibited significantly higher gFCD values in the bilateral prefrontal lobe, bilateral orbital lobule, and bilateral insula, and significantly lower gFCD values in the SMA, right anterior temporal lobule, and the ACC. These altered regions were significantly associated with AVH in the BPD subjects. Moreover, higher gFCD values were observed in the left posterior temporal lobule and posterior frontal lobule. Aberrant alterations also emerged in the left posterior temporal lobule and posterior frontal lobule, mainly in Broca and Wernicke regions. Nevertheless, there was no significant correlation between gFCD values and the severity of AVH as measured by the AVH scores. In summary, we have identified aberrations in the FC and brain metabolism of the aforementioned neural circuits/networks, which may provide new insights into BPD–AVH and facilitate the development of therapeutic approaches for treating AVH in BPD patients.

**Keywords** Auditory verbal hallucination · Borderline personality disorder · Global functional connectivity density · Functional connectivity · Wernicke brain

✉ Chuanjun Zhuo  
chuanjunzhuotjmh@163.com; chuanjunzhuotjmh@ieee.org

✉ Xiaodong Lin  
13325779718@163.com

<sup>1</sup> School of Mental Health, Jining Medical University, Jining 272119, Shandong, China

<sup>2</sup> Psychiatric-Neuroimaging-Genetics Laboratory, Wenzhou Seventh People's Hospital, Wenzhou 325000, Zhejiang, China

<sup>3</sup> Psychiatric-Neuroimaging-Genetics-Comorbidity Laboratory, Tianjin Mental Health Centre, Mental Health Teaching Hospital of Tianjin Medical University, Tianjin Anding Hospital, Tianjin 300222, China

<sup>4</sup> Department of Psychiatry, First Hospital/First Clinical Medical College of Shanxi Medical University, Taiyuan, China

<sup>5</sup> MDT Center for Cognitive Impairment and Sleep Disorders, First Hospital of Shanxi Medical University, Taiyuan 030001, Shanxi, China

<sup>6</sup> Co-Collaboration Laboratory of China and Canada, Xiamen Xianyue Hospital and University of Alberta, Xiamen 361000, Fujian, China

<sup>7</sup> Affiliated Wuhan Mental Health Center, Tongji Medical College of Huazhong University of Science and Technology, Wuhan 430000, Hubei Province, China

## Introduction

An auditory verbal hallucination (AVH) is a disturbance in perception, recognized as “hearing voices” or experiencing speech directed at the subjects themselves in an absence of any stimulus from real external language [1]. AVHs are commonly experienced in patients with schizophrenia spectrum disorders and affect approximately 70% of schizophrenia patients. This symptom is also observed in a broad range of other mental illnesses, including major depressive disorder (MDD), bipolar disorder (BD), post-traumatic stress disorder (PTSD) and borderline personality disorder (BPD), as well as in a proportion of healthy individuals [2]. Notably, previous studies have shown that an AVH is more prevalent in BPD, affecting 25–46% of patients, than other common mood disorders such as depression or mania [2, 3]. AVH can elicit the deterioration and reciprocal action with mood disturbance of BPD patients and increase the risk of self-harm and suicidal behaviors.

To date, the pathological features underlying AVH in mental illnesses remain unclear and there is a significant lack of effective treatment strategies. Therefore, it is paramount to better understand the neurobiological models underlying AVH and the specific features of AVH subtypes in different mental disorders. Most recently, Hugdahl and Sommer applied a novel approach termed the levels of explanations (LoE) to better understand AVHs in patients with schizophrenia. This study found that AVHs can manifest at different domains or “levels” of explanation, including the cultural, clinical, cognitive, imaging, cellular, and molecular stages. Neuroimaging data using functional magnetic resonance imaging (fMRI) as well as behavioral observations allow for the exploration of how to identify the treatment target and reduce the intensity of AVHs. Moreover, the neurobiological characteristics obtained from the cellular, molecular, and genetic levels are expected to help in assessing the relationship between changes in neurotransmitters and the severity of AVHs, thereby facilitating the development of new therapeutic agents specific to AVHs. In addition, it has been noted that different types of AVHs have unique clinical features and, therefore, require different treatment strategies. For example, Slotema et al. reported that borderline personality disorder (BPD) patients, experiencing AVHs usually have high suicidal tendencies, are frequently hospitalized, and have high prevalence rates of post-traumatic stress disorder and emotional abuse. Furthermore, the phenomenological aspects are generally similar to those in patients with schizophrenia. Inspired by these important findings, in this pilot study, we explored the common and distinct brain function alterations in BPD patients with and without AVH.

Brain imaging studies have revealed various features of AVH, while focusing primarily on schizophrenia patients. However, although many studies have investigated the brain structural and functional alterations in patients with BPD, these studies also report important findings regarding the pathological features of BPD. For example, some studies found that perturbed activity in the salience network and reward-related circuits also contribute to BPD [4, 5]. Additionally, orbitofrontal overactivation in reward processing was found to be related to various symptoms (suicide, self-injury, and cognitive and emotional distress) of BPD [4–6]. Some studies also reported that the right caudate and left thalamus are key hubs of the abnormal functional network in the BPD patients compared to the healthy controls [7]. Other studies found that the connectivity between the precuneus and frontal regions during rest might be related to extensive processing of internal thoughts and self-referential information in BPD [8], and that the structural and functional abnormality in BPD involves both temporolimbic and frontomedial structures as well as their various connections [9]. Unfortunately, to the best of our knowledge, exploring brain imaging features of BPD–AVH is limited [1, 10].

Although the aforementioned studies support the perturbed network hypothesis in BPD, a majority of these studies have focused on the investigation of the FC strength (FCS) in patients with BPD. Until now, there has been no study to explore the specific number of functional connections (FC number) of AVH in subjects with BPD. Given the high prevalence of AVH in BPD patients and the unidentified pathological mechanisms, there is an urgent need to explore AVH-specific FC aberrant patterns in BPD with the presence of AVH from other perspectives, such as the FC number. In contrast to FCS, FC number is also a pivotal index to assess FC alterations. It has been reported that global FCD (gFCD) can reflect the FC number of one voxel with the other voxels in the whole brain, which can help identify potential disturbances in FC [11]. Simultaneously, gFCD provides an assessment of connection hub(s) in the whole brain without prior knowledge [11–15]. In addition, previous studies have showed that gFCD, in combination with positron emission tomography (PET), can be used to examine alterations in brain metabolism [12, 16–20]. Collectively, gFCD is a useful measure for investigating brain imaging features of DBP–AVH subjects.

In this pilot study, we hypothesized that BPD patients with or without AVH may have common brain connectivity circuit disturbances as well as distinct brain connectivity circuit disturbances. The shared circuit alterations may be related to the common features of BPD, and the distinct alterations may be related to the AVHs experienced by a particular group of patients with BPD. BPD subjects with or without AVH were prospectively enrolled, and fMRI was collected to assess whole-brain FC as measured by gFCD.

We attempted to investigate the specific whole-brain FCD alterations and their relationship with AVH in BPD. The results gained through this study may help advance our knowledge about AVH in BPD and assist psychiatrists in making treatment plans.

## Methods

### Human subjects

In the present study, a total of 65 pharmacotherapy treatment-naïve female BPD subjects, and 35 healthy individuals were prospectively recruited between July 2014 and December 2018 at Wenzhou Seventh People's Hospital. In total, 30 patients, who had endured AVH since BPD diagnosis and which persisted through enrolment in this study, were allocated to the BPD with AVH group, while the remaining 35 who did not experience an AVH episode during the time from the initial diagnosis of BPD to the enrolment in the present study were assigned to the BPD without AVH group. The diagnosis and assessment of BPD were made in accordance with the DSM-IV diagnostic criteria, adopting the Structured Clinical Interview for DSM disorders (SCID) methodology, during which all patients were interviewed by two expert psychiatrists. The healthy control women were screened by two psychiatrists following the Structured Clinical Interview for DSM-IV, non-patient (SCID-NP) version. The following inclusion criteria for the AVH-BPD subjects were used: (1) fully satisfy BPD diagnosis; (2) fully satisfy the AVH diagnosis according to the criteria of Ratcliff et al. [21]; (3) no psychotherapy received within the 3 months prior to enrollment in this study. The exclusion criteria were as follows: (1) neurological diseases; (2) physical diseases that can influence brain functional activity such as serious endocrine system diseases; (3) substance abuse; (4) schizoaffective disorder; (5) major depressive disorder; (6) post-traumatic stress disorder (PTSD); (7) MRI contraindication; (8) claustrophobia; (9) history of unconsciousness for more than 5 min regardless of cause; (10) perimenopausal syndrome (PMS); (11) left-handedness, as assessed with the Annett Hand Preference Questionnaire.

Written informed consent was obtained from all patients and healthy control individuals to participate in this study. This study was reviewed and approved by the Ethical Committee of Wenzhou Seventh People's Hospital.

### Assessment of mood state and severity of auditory verbal hallucination

The Hamilton Rating Scale for Depression (HAM-D) (17-item version) [22] was used to evaluate the mood state of each individual. The auditory hallucination rating scale

(AHRS) was applied to assess the severity of AVH symptoms in BPD subjects with AVH, in which the scores of the AHRS (range 0–44) reflect the severity of the AVH(s) and indicate worsening of symptoms [23]. We adopted the Zanarini Rating Scale for Borderline Personality Disorder (ZAN-BPD) to assess the psychopathology of BPD patients [24] and the Montreal Cognitive Assessment (MoCA) [25] to assess their cognitive ability. We further used the Ruminative Response Scale (RRS) to assess the rumination of BPD patients [26].

### Acquisition of magnetic resonance imaging data

MRI data were collected using a 3 T GE Discovery MR750 scanner (General Electric, Milwaukee, WI, USA), which was equipped with an eight-channel phased-array head coil. During MRI scanning, both BPD patients and control individuals were instructed to lie in the supine position without moving his/her head. The following imaging parameters were used: repetition time (TR)—2000 ms; echo time (TE)—45 ms; slices—32; thickness—4 mm; gap = 0.5 mm; field of view (FOV)—220 × 220; acquisition matrix—64 × 64; flip angle (FA)—90°. All MRI data were obtained using parallel imaging with the sensitivity encoding (SENSE) technique (SENSE factor: 2). Structural images were acquired using a high-resolution 3D TurboFast Echo T1WI sequence using the following parameters: TR/TE—8.2/3.2; slices—188; thickness—1 mm; no gap; FA—12°; acquisition matrix—256 × 256; FOV—256 × 256.

### Pre-processing of functional magnetic resonance imaging data

Pre-processing is necessary for fMRI data analysis and statistical evaluation. The statistical parametric mapping 8 (SPM8) software was used to pre-process the data acquired in the resting-state fMRI scans (<https://www.fil.ion.ucl.ac.uk/spm>). A total of 248 MRI volumes were acquired, of which 238 volumes were analyzed; slice-timing and motion correction was applied after the first 10 functional volumes were discarded to account for scanner stabilization and patient acclimation to the environment. During the pre-processing of the fMRI data, six motion parameters, and the average BOLD signal of the ventricles and white matter, were omitted. Subsequently, the framewise displacement (FD) was measured and data were regressed out of the image stack if the FD of a specific volume was greater than 0.5. The datasets were filtered using a band-pass filter with cutoff frequencies of 0.01 and 0.08 Hz. Individual structural and transformed structural images were co-registered to the mean functional image, and the Montreal Neurological Institute (MNI) space, respectively. With the parameters estimated during the linear co-registration, motion-corrected

functional volumes were then normalized to the MNI space. For further analysis, the fMRI images were re-sampled to 3 mm cubic voxels.

### Analysis of global functional connectivity density

The gFCD of each voxel, which is defined as the number of functional connections (FCs) between the given voxel and all other voxels, was calculated using in-house Linux scripts [27–31]. gFCD between voxels were analyzed using the Pearson's linear correlation assay, in which the correlation coefficient threshold was defined as  $R > 0.6$  [27–31]. The gFCD calculations were restricted to the voxels in a cerebral gray matter mask. The gFCD of any given voxel ( $\times 0$ ) was calculated as the number of FCs, denoted as  $k(\times 0)$ , between the given voxel ( $\times 0$ ) and other voxels using a “growing” algorithm. The gFCD was subsequently divided by the mean value of the qualified voxels in the whole brain. The gFCD maps were spatially smoothed using a  $6 \times 6 \times 6$  mm<sup>3</sup> Gaussian kernel to minimize variations in the brain functional maps across the study participants. Through comparing the gFCD maps among the three groups, we identified common and distinct gFCD patterns of BPD patients with and without AVH.

### Statistical analysis

Differences in gFCD among the experimental groups were analyzed using a voxel-wise one-way analysis of covariance (ANCOVA), during which demographic factors such as age, gender, and levels of education were included as covariates. This analysis was followed by post hoc intergroup comparisons conducted in a mask that shows gFCD differences from the ANCOVA analysis. Multiple comparisons were

corrected for using a family wise error (FWE) approach.  $P < 0.05$  was considered statistically significant different. A voxel-wise multiple regression analysis was performed to determine the relationship between gFCD and the AHRS total score of the regions showing significant gFCD differences between the BPD–AVH group and the other two groups. The sociodemographic factors, including age, MoCA, illness duration, HAMD scores, and levels of education were considered nuisance covariates. Given the importance of the AHRS scores in neural correlations, the correlation assay was performed between gFCD and the AHRS scores, and multiple comparisons were corrected for using an FWE method.

## Results

### Demographic and clinical characteristics of the study subjects

The baseline demographics and clinical characteristics of the study subjects, including 30 BPD subjects with AVH, 35 BPD subjects without AVH, and 35 healthy control individuals, are summarized in Table 1. All the BPD subjects, regardless of AVH symptoms, had no impulsive behaviour at the time of assessment and MRI data acquisition. All BPD patients and healthy controls were right handed. The mean duration of illness (DOI) was 140.5 months (SD, 40.3 months) in the BPD with AVH group, and 155.0 months (SD, 51.1 months) in the BPD without AVH group (Table 1). There were no significant differences in age (one-way ANOVA,  $F = 0.210$ ,  $P = 0.833$ ) or education level (one-way ANOVA,  $F = 3.57$ ,  $P = 0.104$ ) among the three groups. No significant differences were found in

**Table 1** Demographic and clinical characteristics of the study participants

| Characteristics  | BPD with AVH group ( $n = 30$ ) | BPD without AVH group ( $n = 35$ ) | Control group ( $n = 35$ ) | $P$ value |
|--|---------------------------------|------------------------------------|----------------------------|-----------|
| Age (years): mean (s.d.)                                     | 25.5 (3.0)                      | 27.5 (3.5)                         | 27.0 (2.8)                 | 0.833     |
| Duration of illness (months): mean (s.d.)                    | 140.5 (40.3)                    | 155.0 (51.1)                       | N/A                        | 0.285     |
| Education level (years)                                      | 14.0 (2.7)                      | 14.5 (3.2)                         | 14.7 (4.0)                 | 0.104     |
| HAMD scores, mean (s.d.)                                     | 3.2 (1.5)                       | 2.9 (1.3)                          | N/A                        | 0.149     |
| MoCA   | 25.3 (0.9)                      | 25.6 (0.7)                         | 30 (0.0)                   | 0.011     |
| Auditory Hallucination Rating Scale total score, mean (s.d.) | 20.7 (2.9)                      |                                    | N/A                        |           |
| RRS reflection   | 13.5 (1.8)                      | 10.0 (2.0)                         | 7.9 (2.7)                  | <0.001    |
| RRS brooding   | 13.0 (2.8)                      | 12.5 (3.1)                         | 8.2 (2.5)                  | <0.001    |
| RRS depression   | 27.5 (3.0)                      | 22.9 (3.8)                         | 18.5 (3.0)                 | <0.001    |

All participants were Han Chinese. A One-way ANOVA was used to test the difference in age across the three groups. A two-sample  $t$  test was used to compare the differences in duration of illness and HAMD scores between groups

N/A not applicable

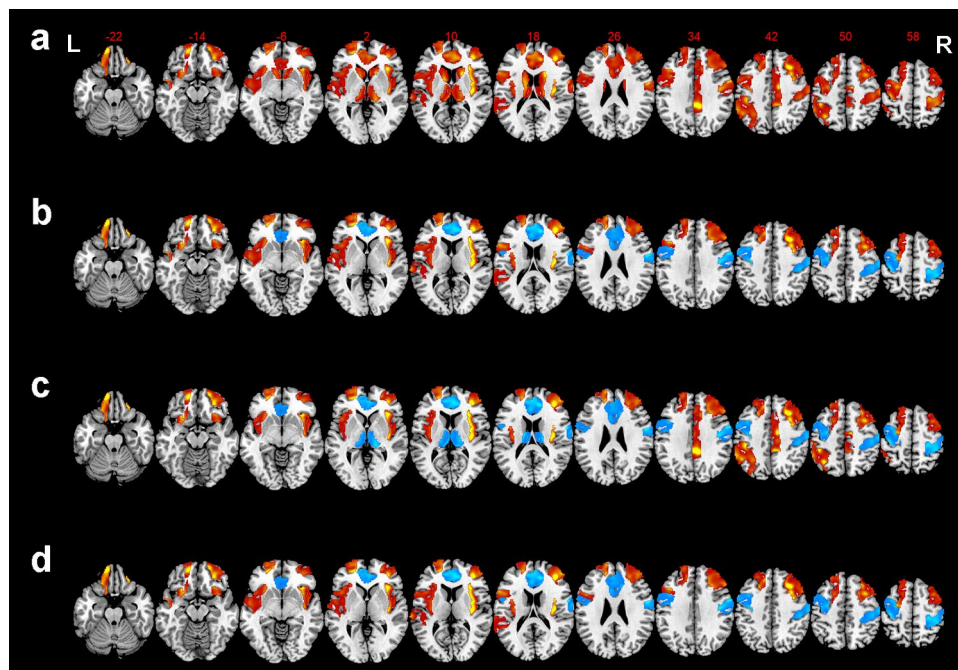


the severity of depressive symptoms (two-sample  $t$  test,  $t=2.859$ ,  $P=0.149$ ) or DOI (two-sample  $t$  test,  $t=1.987$ ,  $P=0.285$ ) between the BPD–AVH group and BPD without AVH group.

### Comparative analysis of changes in gFCD across groups

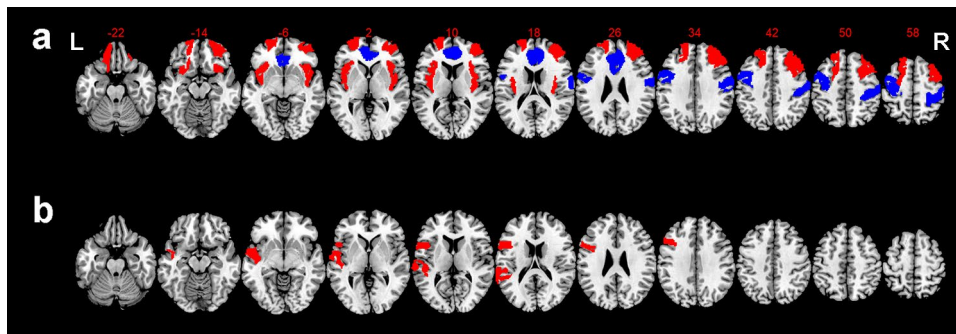
An ANCOVA revealed significant gFCD differences among the three groups in the sensorimotor area (SMA), bilateral prefrontal lobe, bilateral insula, inferior parietal lobule, mid-cingulate cortex, bilateral orbital lobule, bilateral anterior cingulate cortex (ACC), bilateral thalamus, left posterior temporal lobe, left posterior frontal lobe bilateral caudate, and bilateral ventral striatum (FWE corrected,  $P<0.05$ ) (Fig. 1a). Compared to healthy controls, BPD with AVH subjects showed significantly greater gFCD values in the bilateral prefrontal lobe, bilateral orbital lobule, bilateral insula, left posterior regions of temporal lobule, and left posterior frontal lobule, including Broca and Wernicke regions, but lower gFCD values in the SMA, right temporal pole, and ACC (Fig. 1b). Compared to the healthy controls, the BPD without AVH patients exhibited higher gFCD values

in the bilateral prefrontal lobe, bilateral insular, the inferior parietal lobule, the mid-cingulate cortex, bilateral orbital lobule, and lower gFCD values in the regions of SMA, ACC, bilateral anterior temporal lobule, and bilateral thalamus (Fig. 1c). Compared to BPD without AVH, BPD patients with AVH showed greater gFCD values in the bilateral prefrontal lobe, bilateral orbital lobule, bilateral insula, the left posterior regions of temporal lobule, and left posterior frontal lobule, and lower gFCD values in the SMA, right anterior temporal lobule, and ACC (Fig. 1d). Notably, compared to the healthy controls, both BPD groups (BPD–AVH and BPD without AVH) showed greater gFCD values in the bilateral prefrontal lobe, bilateral orbital lobule, and bilateral insular, whereas the gFCD values were significantly lower in the SMA, right anterior temporal lobule, and ACC. As shown in Fig. 2a, these altered regions were significantly associated with AVH in the BPD subjects, and in turn were considered to be the common gFCD aberrant patterns. Moreover, we found a greater gFCD value in the left posterior temporal lobule and posterior frontal lobule, mainly in Broca and Wernicke regions, and we, therefore, defined these regions as the distinct gFCD aberrant patterns of BPD–AVH subjects (Fig. 2b).



**Fig. 1** Brain regions illustrating alterations in gFCD across groups. The functional connectivity maps of the three groups, including the BPD with AVH group, the BPD without AVH group, and the healthy control group, were created as described in the “Methods”. **a** Brain regions with significant changes in gFCD among the three groups: BPD with AVH, BPD without AVH, and healthy controls; **b** brain regions with significant changes in gFCD between the two groups: BPD with AVH versus healthy controls; **c** brain regions with signifi-

cant changes in gFCD between the two groups: BPD without AVH versus healthy controls; **d** brain regions with significant changes in gFCD between the two groups: BPD with AVH versus BPD without AVH. The warm-to-cool color scale in the functional connectivity maps refers to Z scores; the warm colors represent an increase in gFCD, while the cool colors represent a decrease in gFCD. The altered regions in the bilateral brain, including the left hemisphere (L) and right hemisphere (R), are illustrated



**Fig. 2** Brain regions illustrating common and distinct alterations in gFCD between two BPD groups. **a** The common gFCD aberrant patterns in the brain regions of the BPD patients with or without AVH. The common gFCD aberrant patterns refer to the brain functional alterations shared by both BPD patients with and without AVH; **b** the distinct gFCD aberrant patterns in the brain regions of the BPD

patients with AVH in the BPD–AVH group. The warm-to-cool color scale in the functional connectivity maps refers to Z scores; the warm colors represent an increase in gFCD, while the cool colors represent a decrease in gFCD. The altered regions in the bilateral brain, including the left hemisphere (L) and right hemisphere (R), are illustrated

### Association between altered gFCD and the severity of AVH in the BPD subjects with AVH

A correlation analysis revealed no significant association of altered gFCD with the severity of AVH, as measured by both the total score and frequency AHRs measures in the DPB–AVH patients. No significant correlation was found between the gFCD and AVH scores, including the total score and single-item scores. Additionally, no significant correlation was found between the gFCD and RRS scores, including the total score and single-item scores, in both BPD groups.

## Discussion

The novel findings obtained in this study of whole-brain FCD, as measured by gFCD in BPD subjects with or without AVH, have important implications for better understanding the neural substrates underlying the psychotic symptoms of AVH in BPD patients. The major results can be summarized as follows: (1) BPD subjects in the two patient subgroups showed significantly altered gFCD compared with healthy individuals; (2) compared to the healthy controls, both BPD groups (BPD–AVH and BPD without AVH) showed greater gFCD values in the bilateral prefrontal lobe, bilateral orbital lobule, and bilateral insular, whereas the gFCD values were significantly lower in the SMA, right anterior temporal lobule, and ACC (Fig. 2a). These alterations were defined as the common brain alterations shared by BPD with and without AVH; (3) compared to the healthy controls and BPD subjects without AVH, BPD patients with AVH demonstrated increased gFCD in Broca and Wernicke regions (Fig. 2b). These alterations were defined as the distinct features of BPD–AVH; (4) no significant association between gFCD

and the severity of AVH was observed in the BPD–AVH patients.

Our findings agree with previous studies in the sense that the whole-brain FCD increased in the following regions from a FC number perspective: cingulate cortex, precuneus, prefrontal cortex, insula, superior parietal lobe, thalamus, parietal lobule, and occipital lobe. These alterations in whole-brain FCD are thought to be related to aggression and impulsivity symptoms [5, 32, 33]. Additionally, our new findings, and those of others, converge to implicate hyperconnectivity in the control network, attention network, and reward-processing circuit. The common aberrant patterns in these regions could explain the symptoms shared by BPD patients with or without AVH. Previous studies report that the cingulate cortex, precuneus, prefrontal cortex, insula, superior parietal lobe, thalamus, parietal lobule, and occipital lobe are the key components of the central control network, attention network, and reward processing circuit, and that disturbances in the gFCD in the components of these regions, thereby lead to circuit/network functional disturbance [34–38]. The functional interruption in these circuits/networks have been thought to be associated with some symptoms of BPD, with the control network and attention network functional disturbances related to the aggression and impulsivity symptoms of BPD [34–36]. In addition, the disturbance in the reward-processing circuit has been found to be associated with the emotional regulation disturbance, suicide, and self-harm behavior in BPD [37–47].

We found differences mainly in Broca and Wernicke regions in BPD with AVH versus BPD without AVH and healthy controls and defined these alterations as the distinct gFCD patterns of BPD–AVH. Previous studies have reported that the hyperactivity of these two regions are the basis of the “Top-down effect and bottom-up predictions” hypothesis of AVH [40–42]. It has been proposed that an inappropriate

reciprocal action between the bottom-up sensory processing and the top-down regulation processing may interrupt processes governing perception and attention. Bottom-up sensory processing can be defined as perception, and top-down regulation can be defined as attention; the disturbance of this perception and attention network/circuit likely causes AVH [43–45]. Notably, we found that the Wernicke brain region, also commonly known as the language perception region, showed hyperactivity in BPD–AVH patients, which may contribute to their excessive language experience. As the language-generating region, the Broca brain region exhibited hyperactivity, which may have also caused the excessive language experience [46]. As such, there is a possibility that, due to the attention and monitoring deficit (decreased activity in SMA and ACC), the excessive language experience loss ultimately leads to the development of psychotic symptoms of AVH [34, 39, 46]. In summary, our findings of this pilot study are more inclined to support the “imbalance in top-down/bottom-up influences” hypothesis of AVH [35, 41, 43, 45].

It may merit attention in our study that, in the BPD–AVH subjects, the gFCD in the right anterior temporal lobule was highly active, showing hypo-connectivity, whereas in the BPD without AVH subjects, the bilateral temporal lobe was relative inactive with hypo-connectivity. It has been well documented that temporal lobe activity is related to mood state, and that bilateral hypo-connectivity is associated with depressive symptoms [35, 41, 43, 45, 46]. In our study sample, although depressive symptoms did not fulfill the criteria of a depression episode, mood dysregulation was a common symptom of BPD subjects with low mood state and was the main clinical manifestation [47, 48]. Hence, we postulated that the hypo-connectivity of the anterior temporal lobe may be related to depressive symptoms, although no correlation between the gFCD in the anterior temporal lobe and the HAMD score was found in this study, which was likely due to the relatively small sample size. However, compared with the BPD without AVH subjects, the BPD subjects with AVH demonstrated hyperactivity in the left posterior region, for which we postulated this alteration may be associated with AVH in BPD [41, 42, 47]. Moreover, according to the study by Thompson et al., the gFCD also reflects alterations in brain metabolism. Hence, we postulated that the hypermetabolism in the left posterior temporal lobe and posterior frontal lobe, mainly in the Broca and Wernicke regions represented the pathological features of AVH–BPD subjects [12]. Our findings support the hyperactivity hypothesis of AVH [12].

In this study, we did not find a significant correlation between gFCD and the AVH severity in BPD–AVH patients. This observation was in agreement with previous findings that alterations in brain function were not correlated with the severity of clinical symptoms, for which it

has been postulated that these brain alterations could be related to the trait of the symptoms rather than the “state” of symptoms [48–55].

Our study has several potential limitations. First, this study recruited only female BPD patients and female healthy controls. As many previous studies of FC in males and females have shown significant gender differences in various regions of the brain, these differences may affect our whole-brain FCD analyses and their relationship with AVH in BPD. In addition, according to our clinical practice, male BPD patients are less likely to be compliant with fMRI scanning than female BPD patients. With the interesting findings gained in this pilot study of female-only BPD patients, we plan to extend the investigation to male BPD patients. Second, the sample size is relatively small, and this limitation may affect the conclusions drawn from this study. Third, another potential limitation of this study may be related to the evaluation of cognitive ability as previous studies have reported that impairment of cognitive ability was usually observed in BPD patients [40–47]. Fourth, we considered the poor compliance of patients with low cognitive ability in an assessment with MATRICS Consensus Cognitive Battery (MCCB) and, therefore, chose MoCA to evaluate the cognitive ability of subjects in this study, which showed significantly lower scores in BPD patients compared to healthy controls. However, it would be more useful if both MoCA and MCCB were used for the assessment of cognitive ability of patients in future studies, as cognitive ability might influence the common gFCD aberrant pattern. Fifth, although we tried to use the Zanarini Rating Scale for Borderline Personality Disorder (Zan-BPD) to assess the psychopathology of the BPD patients, unfortunately, mainly due to the relatively low education levels of the majority of the participants, we were not able to obtain the qualified assessment and data.

In conclusion, this is the first study, to the best of our knowledge, to examine the gFCD for assessing whole-brain FC in BPD patients with or without AVH. We have identified dysfunctional FC within networks that are significantly associated with the AVH in BPD patients. In addition, the AVH-associated patterns of FC, as measured by gFCD, may offer new insights into BPD–AVH and facilitate the development of new therapeutic approaches for AVH in patients with BPD.

**Funding** This work was supported by grants from the National Natural Science Foundation of China (81871052 to C.Z., 81801679 and 81571319 to Y.X.), the Key Projects of the Natural Science Foundation of Tianjin, China (17JCZDJC35700 to C.Z.), the Tianjin Health Bureau Foundation (2014KR02 to C.Z.), the National Key Research and Development Program of China (2016YFC1307004 to Y.X.), the Shanxi Science and Technology Innovation Training Team’s Multidisciplinary Team for Cognitive Impairment (201705D131027 to Y.X.), the Zhejiang Public Welfare Fund Project (LGF18H090002 to D.J.),



and the key project of the Wenzhou Science and Technology Bureau (ZS2017011 to X.L.).

## Compliance with ethical standards

**Conflicts of interest** The authors declare that they have no competing interest.

**Ethical standards** Written informed consent was obtained from the patients and healthy control individuals to participate in this study. This study was reviewed and approved by the Ethical Committee of Wenzhou Seventh People's Hospital.

**Open Access** This article is licensed under a Creative Commons Attribution 4.0 International License, which permits use, sharing, adaptation, distribution and reproduction in any medium or format, as long as you give appropriate credit to the original author(s) and the source, provide a link to the Creative Commons licence, and indicate if changes were made. The images or other third party material in this article are included in the article's Creative Commons licence, unless indicated otherwise in a credit line to the material. If material is not included in the article's Creative Commons licence and your intended use is not permitted by statutory regulation or exceeds the permitted use, you will need to obtain permission directly from the copyright holder. To view a copy of this licence, visit <http://creativecommons.org/licenses/by/4.0/>.

## References

- Zhuo C, Jiang D, Liu C et al (2019) Understanding auditory verbal hallucinations in healthy individuals and individuals with psychiatric disorders. *Psychiatry Res* 274:213–219
- Upthegrove R, Broome MR, Caldwell K et al (2016) Understanding auditory verbal hallucinations: a systematic review of current evidence. *Acta Psychiatr Scand* 133:352–367
- Slotema CW, Blom JD, Niemantsverdriet MBA et al (2018) Auditory verbal hallucinations in borderline personality disorder and the efficacy of antipsychotics: a systematic review. *Front Psychiatry* 9:347
- Ueltzhoffer K, Herpertz SC, Krauch M et al (2019) Whole-brain functional connectivity during script-driven aggression in borderline personality disorder. *Prog Neuropsychopharmacol Biol Psychiatry* 93:46–54
- Sarkheil P, Ibrahim CN, Schneider F et al (2019) Aberrant functional connectivity profiles of brain regions associated with salience and reward processing in female patients with borderline personality disorder. *Brain Imaging Behav*. <https://doi.org/10.1007/s11682-019-00065-z>
- Quattrini G, Pini L, Pievani M et al (2019) Abnormalities in functional connectivity in borderline personality disorder: Correlations with metacognition and emotion dysregulation. *Psychiatry Res Neuroimag* 283:118–124
- Xu T, Cullen KR, Mueller B et al (2016) Network analysis of functional brain connectivity in borderline personality disorder using resting-state fMRI. *Neuroimage Clin* 11:302–315
- O'Neill A, D'Souza A, Samson AC et al (2015) Dysregulation between emotion and theory of mind networks in borderline personality disorder. *Psychiatry Res* 231:25–32
- Salvador R, Vega D, Pascual JC et al (2016) Converging medial frontal resting state and diffusion-based abnormalities in borderline personality disorder. *Biol Psychiatry* 79:107–116
- Waters F, Woods A, Fernyhough C (2014) Report on the 2nd International Consortium on Hallucination Research: evolving directions and top-10 "hot spots" in hallucination research. *Schizophr Bull* 40:24–27
- Tomasi D, Volkow ND (2010) Functional connectivity density mapping. *Proc Natl Acad Sci USA* 107:9885–9890
- Thompson GJ, Riedl V, Grimmer T et al (2016) The whole-brain "global" signal from resting state fMRI as a potential biomarker of quantitative state changes in glucose metabolism. *Brain Connect* 6:435–447
- Tomasi D, Wang GJ, Volkow ND (2013) Energetic cost of brain functional connectivity. *Proc Natl Acad Sci USA* 110:13642–13647
- Tomasi D, Volkow ND (2011) Association between functional connectivity hubs and brain networks. *Cereb Cortex* 21:2003–2013
- Konova AB, Moeller SJ, Tomasi D et al (2015) Effects of chronic and acute stimulants on brain functional connectivity hubs. *Brain Res* 1628:147–156
- Qin W, Xuan Y, Liu Y et al (2015) Functional connectivity density in congenitally and late blind subjects. *Cereb Cortex* 25:2507–2516
- Zhang B, Li M, Qin W et al (2016) Altered functional connectivity density in major depressive disorder at rest. *Eur Arch Psychiatry Clin Neurosci* 266:239–248
- Lang X, Liu H, Qin W et al (2015) Brain functional connectivity density and individual fluid reasoning capacity in healthy young adults. *NeuroReport* 26:17–21
- Zhuo C, Zhu J, Qin W et al (2014) Functional connectivity density alterations in schizophrenia. *Front Behav Neurosci* 8:404
- Zhuo C, Zhu J, Wang C et al (2017) Different spatial patterns of brain atrophy and global functional connectivity impairments in major depressive disorder. *Brain Imaging Behav* 11:1678–1689
- Ratcliff K, Farhall J, Shawyer F (2011) Auditory hallucinations: a review of assessment tools. *Clin Psychol Psychother* 18:524–534
- Helmreich I, Wagner S, Mergl R et al (2012) Sensitivity to changes during antidepressant treatment: a comparison of unidimensional subscales of the Inventory of Depressive Symptomatology (IDS-C) and the Hamilton Depression Rating Scale (HAM-D) in patients with mild major, minor or subsyndromal depression. *Eur Arch Psychiatry Clin Neurosci* 262:291–304
- Haddock G, McCarron J, Tarrrier N, Faragher EB et al (1999) Scales to measure dimensions of hallucinations and delusions: the psychotic symptom rating scales (PSYRATS). *Psychol Med* 29:879–889
- Zanarini MC, Vujanovic AA, Parachini EA, Boulanger JL, Frankenburg FR, Hennen J (2003) Zanarini Rating Scale for Borderline Personality Disorder (ZAN-BPD): a continuous measure of DSM-IV borderline psychopathology. *J Pers Disord* 17:233–242
- Nasreddine ZS, Phillips NA, Bédirian V, Charbonneau S, Whitehead V, Collin I, Cummings JL, Chertkow H (2005) The Montreal Cognitive Assessment, MoCA: a brief screening tool for mild cognitive impairment. *J Am Geriatr Soc* 53:695–699
- Nolen-Hoeksema S, Morrow J (1991) A prospective study of depression and posttraumatic stress symptoms after a natural disaster: the 1989 Loma Prieta Earthquake. *J Pers Soc Psychol* 61:115–121
- Shokri-Kojori E, Tomasi D, Wiers CE et al (2017) Alcohol affects brain functional connectivity and its coupling with behavior: greater effects in male heavy drinkers. *Mol Psychiatry* 22:1185–1195
- Tomasi D, Shokri-Kojori E, Volkow ND (2016) High-resolution functional connectivity density: hub locations, sensitivity, specificity, reproducibility, and reliability. *Cereb Cortex* 26:3249–3259



29. Zou L, Su L, Qi R et al (2018) Relationship between extraversion personality and gray matter volume and functional connectivity density in healthy young adults: an fMRI study. *Psychiatry Res Neuroimaging* 281:19–23
30. Weng Y, Qi R, Liu C et al (2017) Disrupted functional connectivity density in irritable bowel syndrome patients. *Brain Imaging Behav* 11:1812–1822
31. Zhou F, Zhao Y, Huang M et al (2018) Disrupted interhemispheric functional connectivity in chronic insomnia disorder: a resting-state fMRI study. *Neuropsychiatr Dis Treat* 14:1229–1240
32. Vega D, Ripolles P, Soto A et al (2018) Orbitofrontal overactivation in reward processing in borderline personality disorder: the role of non-suicidal self-injury. *Brain Imaging Behav* 12:217–228
33. Marceau EM, Meuldijk D, Townsend ML et al (2018) Biomarker correlates of psychotherapy outcomes in borderline personality disorder: a systematic review. *Neurosci Biobehav Rev* 94:166–178
34. Metzack PD, Lavigne KM, Woodward TS (2015) Functional brain networks involved in reality monitoring. *Neuropsychologia* 75:50–60
35. Marceau EM, Meuldijk D, Townsend ML, Solowij N, Grenyer BFS (2018) Biomarker correlates of psychotherapy outcomes in borderline personality disorder: a systematic review. *Neurosci Biobehav Rev* 94:166–178
36. Enzi B, Doering S, Faber C, Hinrichs J, Bahmer J, Northoff G (2013) Reduced deactivation in reward circuitry and midline structures during emotion processing in borderline personality disorder. *World J Biol Psychiatry* 14:45–56
37. Goodman M, Carpenter D, Tang CY, Goldstein KE, Avedon J, Fernandez N, Mascitelli KA, Blair NJ, New AS, Triebwasser J, Siever LJ, Hazlett EA (2014) Dialectical behavior therapy alters emotion regulation and amygdala activity in patients with borderline personality disorder. *J Psychiatr Res* 57:108–116
38. Goodman M, Hazlett EA, Avedon JB, Siever DR, Chu KW, New AS (2011) Anterior cingulate volume reduction in adolescents with borderline personality disorder and co-morbid major depression. *J Psychiatr Res* 45:803–807
39. Bilek E, Stöbel G, Schäfer A, Clement L, Ruf M, Robnik L, Neukel C, Tost H, Kirsch P, Meyer-Lindenberg A (2017) State-dependent cross-brain information flow in borderline personality disorder. *JAMA Psychiatry* 74:949–957
40. Nazimek JM, Hunter MD, Woodruff PW (2012) Auditory hallucinations: expectation–perception model. *Med Hypotheses* 78:802–810
41. Curcic-Blake B, Ford JM, Hubl D et al (2017) Interaction of language, auditory and memory brain networks in auditory verbal hallucinations. *Prog Neurobiol* 148:1–20
42. Laroï F, Thomas N, Aleman A et al (2019) The ice in voices: understanding negative content in auditory-verbal hallucinations. *Clin Psychol Rev* 67:1–10
43. Hugdahl K, Sommer IE (2018) Auditory verbal hallucinations in schizophrenia from a levels of explanation perspective. *Schizophr Bull* 44:234–241
44. Merrett Z, Rossell SL, Castle DJ (2016) Comparing the experience of voices in borderline personality disorder with the experience of voices in a psychotic disorder: a systematic review. *Aust N Z J Psychiatry* 50:640–648
45. Hugdahl K (2009) "Hearing voices": auditory hallucinations as failure of top-down control of bottom-up perceptual processes. *Scand J Psychol* 50:553–560
46. Rizk MM, Choo TH, Galfalvy H et al (2019) Variability in suicidal ideation is associated with affective instability in suicide attempters with borderline personality disorder. *Psychiatry* 82(2):173–178
47. Zabihzadeh A, Maleki G, Richman MJ et al (2017) Affective and cognitive theory of mind in borderline personality disorder: the role of comorbid depression. *Psychiatry Res* 257:144–149
48. Lui S, Li T, Deng W, Jiang L, Wu Q, Tang H, Yue Q, Huang X, Chan RC, Collier DA, Meda SA, Pearlson G, Mechelli A, Sweeney JA, Gong Q (2010) Short-term effects of antipsychotic treatment on cerebral function in drug-naïve first-episode schizophrenia revealed by "resting state" functional magnetic resonance imaging. *Arch Gen Psychiatry* 67:783–792
49. Lui S, Deng W, Huang X, Jiang L, Ma X, Chen H, Zhang T, Li X, Li D, Zou L, Tang H, Zhou XJ, Mechelli A, Collier DA, Sweeney JA, Li T, Gong Q (2009) Association of cerebral deficits with clinical symptoms in antipsychotic-naïve first-episode schizophrenia: an optimized voxel-based morphometry and resting state functional connectivity study. *Am J Psychiatry* 166:196–205
50. Lee JS, Han K, Lee SK, Seok JH, Kim JJ (2014) Altered structural connectivity and trait anhedonia in patients with schizophrenia. *Neurosci Lett* 579:7–11
51. Zhang Y, Fan L, Caspers S, Heim S, Song M, Liu C, Mo Y, Eickhoff SB, Amunts K, Jiang T (2017) Cross-cultural consistency and diversity in intrinsic functional organization of Broca's Region. *Neuroimage* 150:177–190
52. Griffa A, Baumann PS, Klauser P, Mullier E, Cleusix M, Jenni R, van den Heuvel MP, Do KQ, Conus P, Hagmann P (2019) Brain connectivity alterations in early psychosis: from clinical to neuroimaging staging. *Transl Psychiatry* 9:62
53. Mallikarjun PK, Lalouis PA, Dunne TF, Heinze K, Reniers RL, Broome MR, Farmah B, Oyebo F, Wood SJ, Upthegrove R (2018) Aberrant salience network functional connectivity in auditory verbal hallucinations: a first episode psychosis sample. *Transl Psychiatry* 8:69
54. Lamers A, Toepper M, Fernando SC et al (2019) Nonacceptance of negative emotions in women with borderline personality disorder: association with neuroactivity of the dorsal striatum. *J Psychiatry Neurosci* 44:1–10
55. Del Pozo MA, Harbeck S, Zahn S et al (2018) Cognitive distortions in anorexia nervosa and borderline personality disorder. *Psychiatry Res* 260:164–172