

Preoperative radiographic and histopathologic evaluation of central chondrosarcoma

Yasuo Yoshimura · Ken-ichi Isobe · Hideki Arai ·
Kaoru Aoki · Munehisa Kito · Hiroyuki Kato

Received: 4 February 2013 / Published online: 3 July 2013
© The Author(s) 2013. This article is published with open access at Springerlink.com

Abstract

Background Distinguishing grade 1 chondrosarcoma from grade 2 chondrosarcoma is critical both for planning the surgical procedure and for predicting the outcome. We aimed to review the preoperative radiographic and histologic findings, and to evaluate the reliability of preoperative grading.

Methods We retrospectively reviewed the medical records of 17 patients diagnosed with central chondrosarcoma at our institution between 1996 and 2011. In these cases, we compared the preoperative and postoperative histologic grades, and evaluated the reliability of the preoperative histologic grading. We also assessed the preoperative radiographic findings obtained using plain radiography, computed tomography (CT), and magnetic resonance imaging (MRI).

Results Preoperative histologic grade was 1 in 12 patients, 2 in 4 patients, and 3 in 1 patient. However, 6 of the 12 cases classified as grade 1 before surgery were re-classified as grade 2 postoperatively. In the radiographic evaluation, grade 1 was suspected by the presence of a ring-and-arc pattern of calcification on plain radiography and CT and entrapped fat and ring-and-arc enhancement on MRI. Grades 2 and 3 were suspected by the absence of calcification and the presence of cortical penetration and endosteal scalloping on plain radiography and CT, as well as soft-tissue mass formation on MRI.

Conclusion Although the combination of radiographic interpretation and histologic findings may improve the accuracy of preoperative grading in chondrosarcoma, the

establishment of a standard evaluation system with the histologic and radiographic findings and/or the development of new biologic markers are necessary for preoperative discrimination of low-grade chondrosarcoma from high-grade chondrosarcoma.

Keywords Chondrosarcoma · Imaging features · Histopathology · Surgical staging

Introduction

Chondrosarcoma is the second most frequent primary malignant bone tumor after osteosarcoma [1] and represents a heterogeneous group of tumors, ranging from indolent, low-grade lesions (grade 1) to aggressive, high-grade neoplasms (grades 2, 3). Recently, some authors advocated the adequacy of intralesional surgery for grade 1 chondrosarcoma [2–8]. However, this tumor remains a challenge to diagnose accurately and treat effectively.

The histologic grading system is separated into three grades, based on cellularity, atypia, and pleomorphism [9], and is related to prognosis [10–12]. Accurate preoperative grading of chondrosarcoma is required because it determines the surgical approach and outcome. However, biopsy specimens do not always determine a correct diagnosis of grade [13, 14]. For this reason, it is particularly important to combine radiographic interpretation with histologic findings. Recent studies of magnetic resonance imaging (MRI) have improved the sensitivity in differential diagnosis [15–17]. The purpose of this study was to review the preoperative radiographic and histologic findings that differentiate low-grade chondrosarcoma (grade 1) from high-grade chondrosarcoma (grades 2, 3), and to evaluate the reliability of preoperative grading.

Y. Yoshimura (✉) · K. Isobe · H. Arai · K. Aoki · M. Kito · H. Kato
Department of Orthopaedic Surgery, Shinshu University School
of Medicine, 3-1-1 Asahi, Matsumoto, Nagano Prefecture, Japan
e-mail: yyoshim@shinshu-u.ac.jp

Materials and methods

This study was conducted with the approval of our institutional review board.

We retrospectively reviewed the medical records of 17 patients diagnosed with central chondrosarcoma at our institution from 1 January 1996 to 31 December 2011. There were 10 men and 7 women, with a mean age at time of diagnosis of 66 years (range 38–85 years). The tumors were located in the humerus ($n = 4$), ulna ($n = 1$), phalange ($n = 2$), femur ($n = 7$), tibia ($n = 1$), calcaneus ($n = 1$), and rib ($n = 1$). The final histologic grade of the resected tumor was 1 in 6 patients, 2 in 10 patients, and 3 in 1 patient.

In these cases, we compared the preoperative and postoperative histologic grading and evaluated the reliability of the preoperative histologic grading. The histologic grading system we used was based on that described by Evans and colleagues [9]. The typical histology of each grade is shown in Fig. 1. We also assessed the preoperative radiographic findings on plain radiography, computed tomography (CT), and MRI.

On plain radiography and CT, we evaluated the findings of low-grade chondrosarcoma (grade 1), such as a ring-and-arc pattern of calcification, and those of high-grade chondrosarcoma (grades 2, 3), such as the absence of calcification and the presence of cortical penetration and endosteal scalloping [18]. On MRI, we evaluated the findings of low-grade chondrosarcoma, such as entrapped fat within the tumor, lobular architecture, and ring-and-arc enhancement, and those of high-grade chondrosarcoma, such as central high signal on T1-weighted images, soft-tissue mass formation, and central non-enhancement portion [19]. The ring-and-arc pattern of calcification usually represents the pathologic characteristic of enchondral ossification about the margin of the cartilaginous lobules (Fig. 2a) [18]. Higher-grade chondrosarcomas often contain relatively less extensive areas of matrix mineralization. The absence of calcification and the presence of cortical penetration, endosteal scalloping, and soft-tissue mass formation represent a more aggressive pattern, which may be seen with higher-grade (grades 2, 3) chondrosarcoma (Figs. 2b, c, and 3a). Entrapped fat on T1-weighted MR images is defined as a less-aggressive finding, with entrapped areas of pre-existing yellow marrow, which is seen as small, speckled, punctate lesions (Fig. 3b). Central high signal on T1-weighted MR images and a central non-enhancement pattern represent hemorrhagic cystic change within the tumor, which may be seen in high-grade chondrosarcoma [19].

Radiographic grading was determined by these findings and compared with the postoperative histologic grading. Finally, we reviewed the reliability and limitations of this

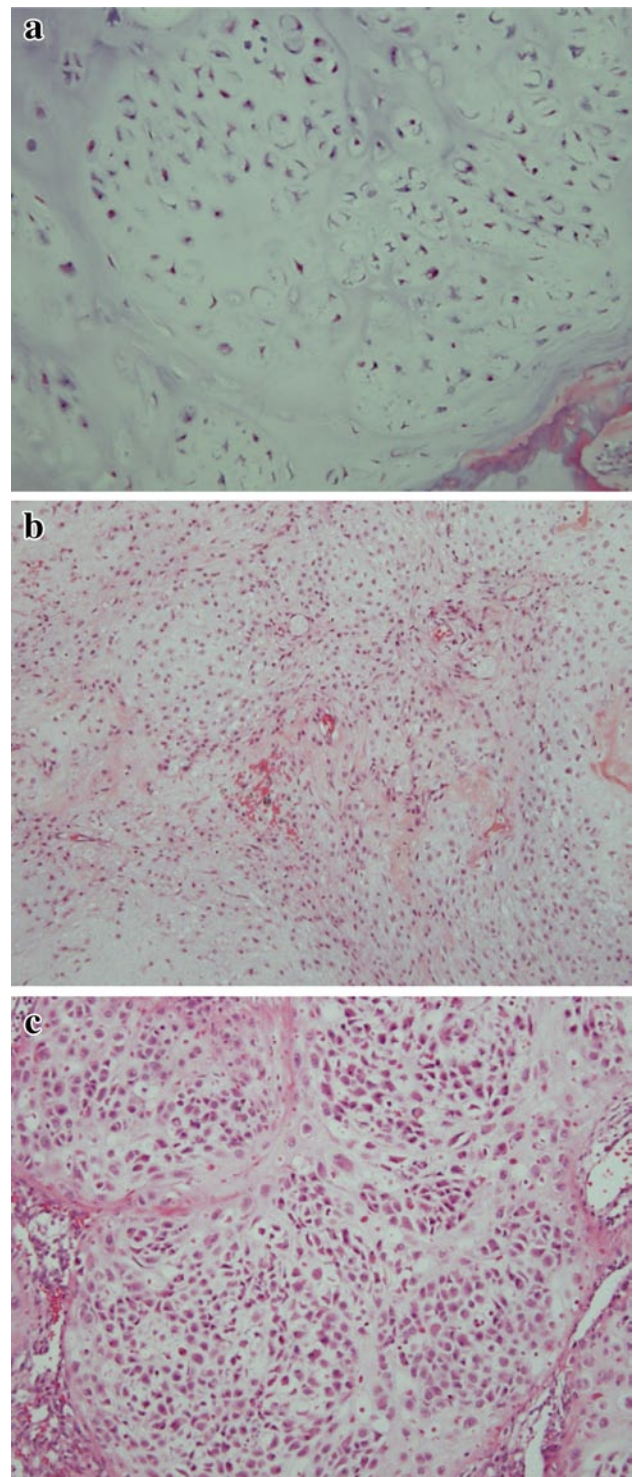


Fig. 1 Histologic features of chondrosarcoma. **a** Grade 1: tumors are moderately cellular with chondroid matrix and absent mitosis. **b** Grade 2: tumors are more cellular with a greater degree of nuclear atypia and hyperchromasia and larger nuclear size. **c** Grade 3: tumors are densely cellular and pleomorphic. Mitoses are easily detected [hematoxylin and eosin staining; original magnification, $\times 100$ in (a–c)]

Fig. 2 Radiographic findings of chondrosarcoma. **a** Presence of a ring-and-arc pattern of calcification. **b** Absence of calcification (*arrow*). **c** Presence of cortical penetration (*arrows*) and endosteal scalloping (*arrowheads*) is defined

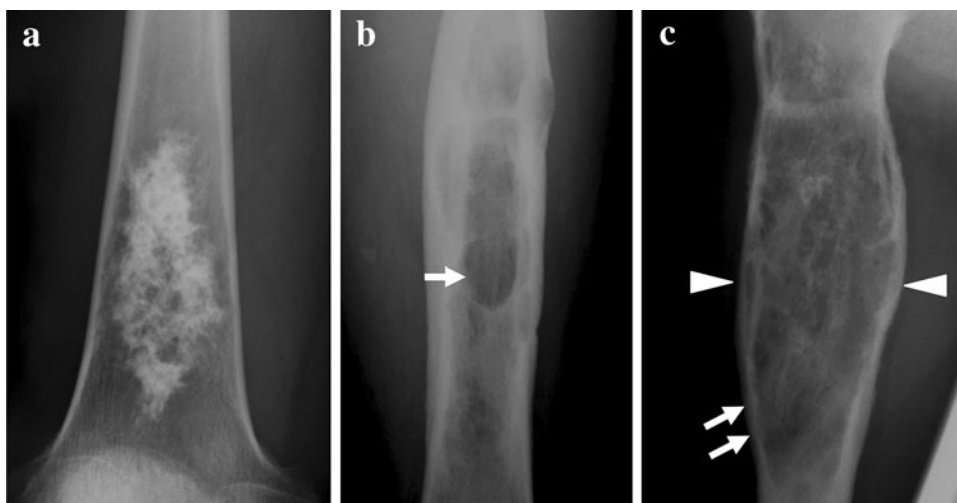
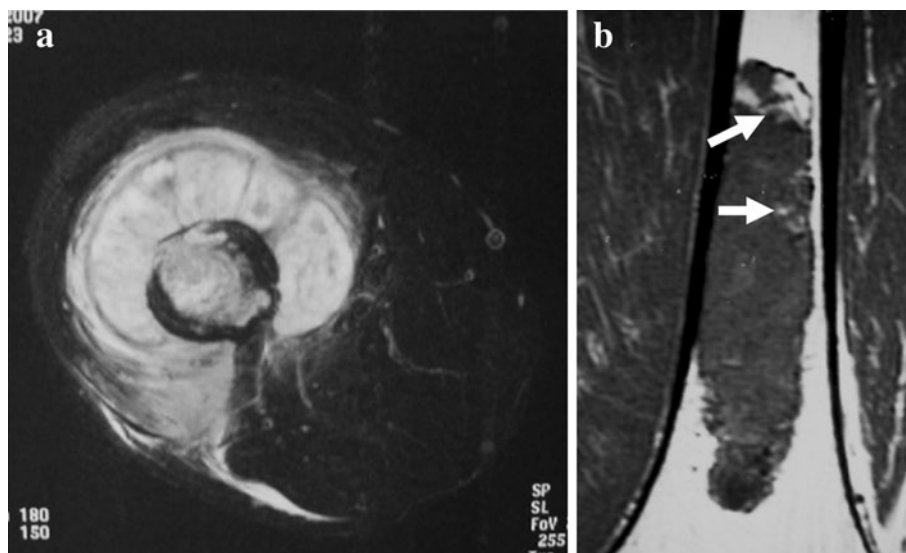


Fig. 3 Magnetic resonance imaging findings of chondrosarcoma. **a** Axial T2-weighted fat-suppressed image showing soft-tissue mass formation. **b** Coronal T1-weighted image showing entrapped fat (*arrows*), which indicates entrapped areas of pre-existing yellow marrow



combination of preoperative histologic and radiographic gradings.

Results

The clinical and histologic data of the 17 patients are summarized in Table 1. The method of preoperative histologic grading was needle biopsy in 4 patients, excisional biopsy in 12 patients, and curettage in 1 patient. Preoperative histologic grading was 1 in 12 patients, 2 in 4 patients, and 3 in 1 patient. However, 6 of 12 patients evaluated as grade 1 before surgery were changed to grade 2 in postoperative grading. In these 6 cases, 2 of 4 patients were diagnosed via needle biopsy. In 3 of 5 patients who had metastases, the histologic grade was changed from grade 1 to grade 2 after surgery. One of two grade 2 patients with local recurrence

was evaluated as grade 1 before surgery and was selected for intralesional curettage.

In the radiographic evaluation, findings of plain radiography and CT are summarized in Table 2. Extensive areas of ring-and-arc pattern of calcification within the tumor were seen in four of six patients categorized as grade 1 (67 %) but only focally in patients of grades 2 and 3. The absence of calcification within the tumor and the presence of cortical penetration and endosteal scalloping were seen in most patients of grade 2 and 3, but only a few patients of grade 1. MRI revealed entrapped fat within the tumor on T1-weighted images and ring-and-arc enhancement on gadolinium-enhanced T1-weighted images in most patients of grade 1, while soft-tissue mass formation was seen more frequently in grades 2 and 3 (Table 3). However, in patients of grade 2, ring-and-arc enhancement was detected in only a small area of the tumor. Central high

Table 1 Clinical and histologic data of the 17 patients

No.	Age, years	Sex	Location	Biopsy	Operation	Recurrence	Metastasis	Histological grading	
								Preop	Postop
1	73	F	Femur	Excision	Wide resection	–	–	2	2
2	71	M	Femur	Excision	Amputation	–	–	2	2
3	38	M	Tibia	Excision	Amputation	–	–	2	2
4	51	M	Femur	Excision	Wide resection	–	–	1	1
5	74	F	Phalange	Needle	Marginal resection	–	+	1	2
6	57	M	Humerus	Excision	Wide resection	+	+	1	2
7	67	F	Calcaneus	Needle	Amputation	–	+	3	3
8	71	M	Humerus	Excision	Curettage	–	–	1	1
9	75	F	Ulna	Curettage	Marginal resection	+	–	1	2
10	72	F	Phalange	Excision	Amputation	–	–	1	2
11	68	M	Femur	Excision	Curettage	–	–	1	1
12	63	M	Femur	Excision	Wide resection	–	–	1	1
13	48	F	Humerus	Excision	Curettage	–	–	1	1
14	48	M	Femur	Excision	Wide resection	–	–	1	1
15	85	M	Femur	Needle	Wide resection	–	+	1	2
16	77	F	Humerus	Excision	Wide resection	–	–	1	2
17	80	M	Rib	Needle	Wide resection	–	+	2	2

Table 2 Radiographic features on plain radiography and computed tomography

	Grade 1, no. (<i>n</i> = 6)	Grade 2, no. (<i>n</i> = 10)	Grade 3, no. (<i>n</i> = 1)
Ring-and-arc pattern	4	0	0
Absence of calcification	2	10	1
Cortical penetration	2	10	1
Endosteal scalloping	1	8	1

Table 3 Radiographic features on magnetic resonance imaging

	Grade 1, no. (<i>n</i> = 6)	Grade 2, no. (<i>n</i> = 10)	Grade 3, no. (<i>n</i> = 1)
Entrapped fat (T1–WI)	4	1	0
Lobular architecture	5	7	1
Ring-and-arc enhancement	4	0	0
Central high signal intensity (T1–WI)	1	3	0
Soft-tissue mass formation	1	7	1
Central non-enhancement area	3	9	1

signal on T1-weighted images was seen in a few cases in all the patients. Lobular architecture and a central non-enhancing portion were detected in all grades. The results

above demonstrated that grade 1 (low-grade chondrosarcoma) was suspected by the presence of an extensive area of ring-and-arc pattern of calcification on plain radiography and CT, as well as entrapped fat and ring-and-arc enhancement on MRI. However, grades 2 and 3 (high-grade chondrosarcoma) were suspected by the absence of calcification and the presence of cortical penetration and endosteal scalloping on plain radiography and CT, as well as soft-tissue mass formation on MRI (Table 4). According to these criteria, we could confirm the findings of high-grade chondrosarcoma in all six cases changed from grade 1 to grade 2 postoperatively. However, two of six cases categorized as grade 1 postoperatively had the radiographic characteristics of high-grade chondrosarcoma (Fig. 4).

Discussion

Although several studies have reviewed the differentiation criteria of grade 1 chondrosarcoma from enchondroma [13, 16, 18, 20–24], distinguishing grade 2 chondrosarcoma from grade 1 chondrosarcoma has hardly been discussed. However, distinguishing grade 1 chondrosarcoma from grade 2 chondrosarcoma is clinically among the most important aspects of diagnosis, both for planning the surgical procedure and for predicting the outcome because (1) grade 1 lesions almost never metastasize [9, 25], but grade 2 or 3 lesions tend to recur and form metastases, and (2) intralesional treatment may be adequate for grade

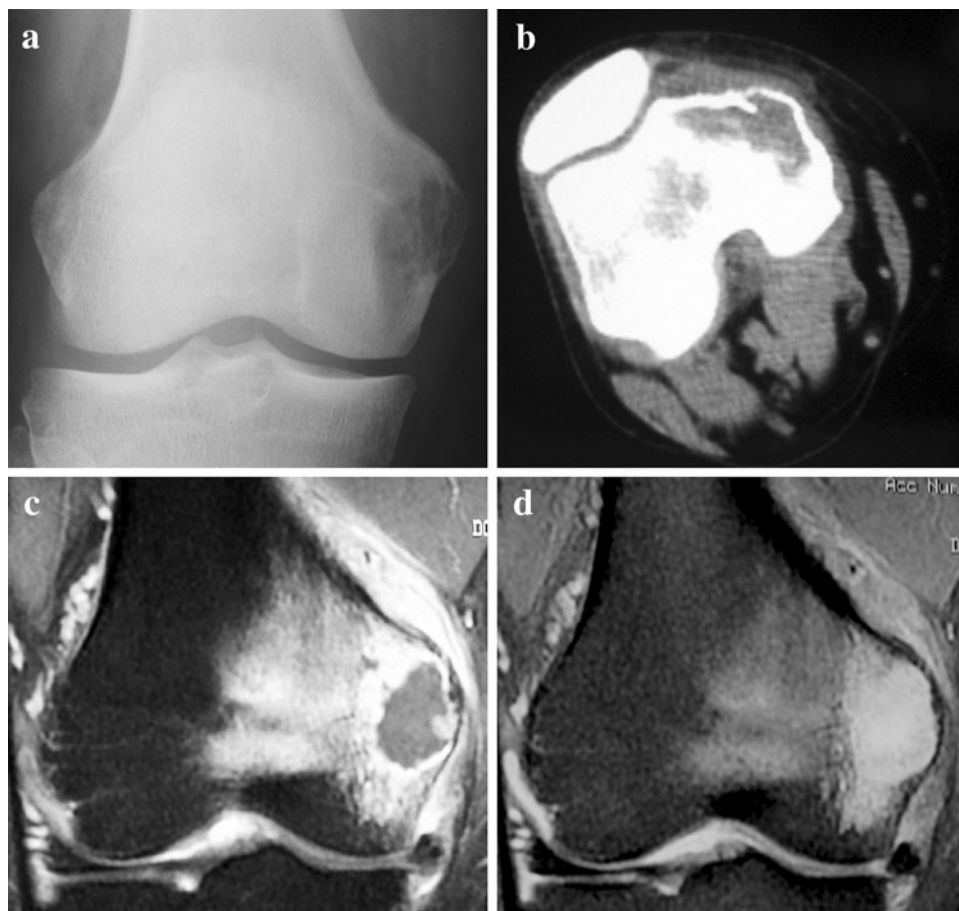
Table 4 Radiographic findings available for differentiation of low-grade and high-grade chondrosarcoma

	Sensitivity (%)	Specificity (%)	PPV (%)
Low grade (grade 1)			
Plain radiography and CT			
Ring-and-arc pattern	67	100	100
MRI			
Entrapped fat (T1–WI)	67	90	90
Ring-and-arc enhancement	67	100	100
High grade (grade 2)			
Plain radiography and CT			
Absence of calcification	100	67	83
Cortical penetration	100	67	83
Endosteal scalloping	80	83	89
MRI			
Soft-tissue mass formation	70	83	88

CT computed tomography, MRI magnetic resonance imaging, PPV positive predictive value

Fig. 4 A 48-year-old man with a low-grade (grade 1) chondrosarcoma in the femur.

a, b Anteroposterior radiography and computed tomography showing endosteal scalloping and the absence of calcification. **c** Coronal T1-weighted gadolinium-enhanced fat-suppressed magnetic resonance image showing a large area of central non-enhancement within the tumor. **d** Coronal T2-weighted image showing extensive bone marrow edema



1 chondrosarcoma in contrast to grade 2 or 3 lesions, which may require wide resection [2–8]. We also discuss grade evaluation of several cases of chondrosarcoma at a tumor board meeting before surgery. However, the difficulties of these grade interpretations between grade 1 and grade 2 long have been suspected because there is a

lack of criteria to define the limits between different subtypes. Furthermore, we often cannot determine the correct histologic grade with small biopsy specimens preoperatively since chondrosarcoma might have various histologic grades within the same tumor [11, 13]. Actually, our data indicated that preoperative histologic grading with biopsy

specimens had low reliability. In our study, 6 of 12 patients evaluated as grade 1 before surgery were changed to grade 2 in postoperative grading. In these six cases, two of four patients were graded via needle biopsy. According to previous reports, a needle biopsy does not always determine a correct diagnosis of grade [12, 15]. Although needle biopsy may be performed as the first method for histologic evaluation, excisional biopsy should be performed as well when the differentiation of grade 1 from grade 2 chondrosarcoma is difficult by needle biopsy alone.

Therefore, it is particularly important to combine radiographic interpretation with histologic findings. In our study, the presence of an extensive area of ring-and-arc pattern of calcification is more common in low-grade (grade 1) chondrosarcoma, while the absence of calcification and the presence of cortical penetration and endosteal scalloping is more common in high-grade (grades 2, 3) chondrosarcoma on plain radiography and CT. Moreover, entrapped fat within the tumor and ring-and-arc enhancement are more characteristic of low-grade chondrosarcoma, but soft-tissue mass formation is more common in high-grade chondrosarcoma on MRI. Taken together, our data indicated that an extensive area of ring-and-arc pattern of calcification on CT and entrapped fat within the tumor and ring-and-arc enhancement on MRI had intermediate sensitivity (67, 67, 67 %, respectively), high specificity (100, 90, 100 %, respectively), and a positive predictive value (PPV) (100, 90, 100 %, respectively) in grade 1 chondrosarcoma. The absence of calcification and the presence of cortical penetration and endosteal scalloping on plain radiography and CT had high sensitivity (100, 100, 80 %, respectively) and a PPV (83, 83, 89 %, respectively), while soft-tissue mass formation on MRI had high specificity (83 %) and a PPV (88 %) in grade 2 chondrosarcoma (Table 4).

A previous study reported that a relatively less extensive area of matrix mineralization is often seen in higher-grade chondrosarcomas on plain radiography and CT [18]. Another study reported that soft-tissue mass formation favors the diagnosis of high-grade chondrosarcoma, and entrapped fat within the tumor is highly indicative of low-grade chondrosarcoma on MRI [19]. In addition, the radiographic classification of Lodwick is used as an index to predict the biologic behavior of bone tumors and tumor-like lesions; this classification is commonly applied for chondrosarcoma [26, 27]. Our data, which were gathered by evaluating plain radiography, CT, and MRI in the same series, were consistent with the results of previous studies. Therefore, we advocate preoperative grading in the context of a combination of findings on plain radiography, CT, and MRI to more accurately differentiate low-grade chondrosarcoma from high-grade chondrosarcoma since some cases do not have characteristic radiographic findings. If treating physicians use this method, they can avoid treating

as grade 1 for grade 2 chondrosarcoma. However, two cases of grade 1 chondrosarcoma that were evaluated as grade 2 preoperatively with radiographic findings were treated with wide resection in the present study. Thus, the value of morphologic radiographic features in differentiating low-grade chondrosarcoma from high-grade chondrosarcoma was shown to be limited. In the present status, we should select wide resection if the radiographic findings have the characteristics of grade 2 in spite of a histologic evaluation pointing to grade 1. In addition, it is necessary to consider the location of the chondrosarcoma when determining the treatment strategy because chondrosarcomas arising from the pelvis or axial skeleton are generally associated with greater biologic aggressiveness and more frequent recurrence. Wide resection should be selected for these locations even if the radiographic and/or histologic findings show characteristics of grade 1 chondrosarcoma.

Recently, a new biomarker has been investigated for its ability to distinguish low-grade from high-grade chondrosarcoma and to predict clinical outcomes. Takeuchi et al. [28] demonstrated that significant differences in the endogenous secretory receptor for advanced glycation end products (esRAGE) labeling index were seen between grade 1 and grade 2 chondrosarcomas using an enzyme-linked immunosorbent assay (ELISA) in 11 cases of chondrosarcoma. However, further large-scale prospective studies are required to validate these markers as routine diagnostic and prognostic tools in the assessment of chondrosarcoma. In the future, the establishment of a standard evaluation system combining radiographic interpretation with histologic findings and/or the development of new biologic markers is necessary for accurately discriminating low-grade chondrosarcoma from high-grade chondrosarcoma prior to surgery.

Acknowledgments We thank Jun Nakayama for evaluating the pathologic findings. We also thank Tominaga Shimizu and Tsutomu Akahane for their help in the clinical evaluation of the patients.

Conflict of interest The authors declare that they have no conflict of interest.

Open Access This article is distributed under the terms of the Creative Commons Attribution License which permits any use, distribution, and reproduction in any medium, provided the original author(s) and the source are credited.

References

1. Lee FY, Mankin HJ, Fondren G, Gebhardt MC, Springfield DS, Rosenberg AE, Jennings LC (1999) Chondrosarcoma of bone: an assessment of outcome. *J Bone Joint Surg Am* 81(3):326–338
2. Leerapun T, Hugate RR, Inwards CY, Scully SP, Sim FH (2007) Surgical management of conventional grade I chondrosarcoma of long bones. *Clin Orthop Relat Res* 463:166–172. doi:10.1097/BL O.0b013e318146830f

3. Hanna SA, Whittingham-Jones P, Sewell MD, Pollock RC, Skinner JA, Saifuddin A, Flanagan A, Cannon SR, Briggs TWR (2009) Outcome of intralesional curettage for low-grade chondrosarcoma of long bones. *Eur J Surg Oncol* 35(12):1343–1347. doi:10.1016/j.ejso.2009.06.001
4. Aarons C, Potter BK, Adams SC, Pitcher JD, Temple HT (2009) Extended intralesional treatment versus resection of low-grade chondrosarcomas. *Clin Orthop Relat Res* 467(8):2105–2111. doi:10.1007/s11999-008-0691-8
5. Donati D, Colangeli S, Colangeli M, Di Bella C, Bertoni F (2010) Surgical treatment of grade I central chondrosarcoma. *Clin Orthop Relat Res* 468(2):581–589. doi:10.1007/s11999-009-1056-7
6. Mohler DG, Chiu R, McCall DA, Avedian RS (2010) Curettage and cryosurgery for low-grade cartilage tumors is associated with low recurrence and high function. *Clin Orthop Relat Res* 468(10):2765–2773. doi:10.1007/s11999-010-1445-y
7. Souna BS, Belot N, Duval H, Langlais F, Thomazeau H (2010) No recurrences in selected patients after curettage with cryotherapy for grade I chondrosarcomas. *Clin Orthop Relat Res* 468(7):1956–1962. doi:10.1007/s11999-009-1211-1
8. Hickey M, Farrokhyar F, Deheshi B, Turcotte R, Ghert M (2011) A systematic review and meta-analysis of intralesional versus wide resection for intramedullary grade I chondrosarcoma of the extremities. *Ann Surg Oncol* 18(6):1705–1709. doi:10.1245/s10434-010-1532-z
9. Evans HL, Ayala AG, Romsdahl MM (1977) Prognostic factors in chondrosarcoma of bone: a clinicopathologic analysis with emphasis on histologic grading. *Cancer* 40(2):818–831
10. Fiorenza F, Abudu A, Grimer RJ, Carter SR, Tillman RM, Ayoub K, Mangham DC, Davies AM (2002) Risk factors for survival and local control in chondrosarcoma of bone. *J Bone Joint Surg Br* 84(1):93–99
11. Söderström M, Ekfors TO, Böhling TO, Teppo LH, Vuorio EI, Aro HT (2003) No improvement in the overall survival of 194 patients with chondrosarcoma in Finland in 1971–1990. *Acta Orthop Scand* 74(3):344–350
12. Pritchard DJ, Lunke RJ, Taylor WF, Dahlin DC, Medley BE (1980) Chondrosarcoma: a clinicopathologic and statistical analysis. *Cancer* 45(1):149–157
13. Eefting D, Schrage YM, Geirnaerd MJ, Le Cessie S, Taminiau AH, Bovée JV, Hogendoorn PC (2009) Assessment of interobserver variability and histologic parameters to improve reliability in classification and grading of central cartilaginous tumors. *Am J Surg Pathol* 33(1):50–57
14. The skeletal lesions interobserver correlation among expert diagnosticians (SLICED) study group (2007) Reliability of histopathologic and radiologic grading of cartilaginous neoplasms in long bones. *J Bone Joint Surg Am* 89(10):2113–2123. doi:10.2106/JBJS.F.01530
15. Geirnaerd MJ, Bloem JL, Eulderink F, Hogendoorn PC, Taminiau AH (1993) Cartilaginous tumors: correlation of gadolinium-enhanced MR imaging and histopathologic findings. *Radiology* 186(3):813–817
16. Geirnaerd MJ, Hogendoorn PC, Bloem JL, Taminiau AH, van der Woude HJ (2000) Cartilaginous tumors: fast contrast-enhanced MR imaging. *Radiology* 214(2):539–546
17. De Beuckeleer LH, De Schepper AM, Ramon F, Somville J (1995) Magnetic resonance imaging of cartilaginous tumors: a retrospective study of 79 patients. *Eur J Radiol* 21(1):34–40
18. Murphey MD, Walker EA, Wilson AJ, Kransdorf MJ, Temple HT, Gannon FH (2003) From the archives of the AFIP: imaging of primary chondrosarcoma: radiologic-pathologic correlation. *Radiographics* 23(5):1245–1278
19. Yoo HJ, Hong SH, Choi JY, Moon KC, Kim HS, Choi JA, Kang HS (2009) Differentiating high-grade from low-grade chondrosarcoma with MR imaging. *Eur Radiol* 19(12):3008–3014. doi:10.1007/s00330-009-1493-4
20. Varma DG, Ayala AG, Carrasco CH, Guo SQ, Kumar R, Edeiken J (1992) Chondrosarcoma: MR imaging with pathologic correlation. *Radiographics* 12(4):687–704
21. Geirnaerd MJ, Hermans J, Bloem JL, Kroon HM, Pope TL, Taminiau AH, Hogendoorn PC (1997) Usefulness of radiography in differentiating enchondroma from central grade 1 chondrosarcoma. *AJR Am J Roentgenol* 169(4):1097–1104
22. Ollivier L, Vanel D, Leclère J (2004) Imaging of chondrosarcomas. *Cancer Imaging* 4(1):36–38. doi:10.1102/1470-7330.2003.0022
23. Weiner SD (2004) Enchondroma and chondrosarcoma of bone: clinical, radiologic, and histologic differentiation. *Instr Course Lect* 53:645–649
24. Soldatos T, McCarthy EF, Attar S, Carrino JA, Fayad LM (2011) Imaging features of chondrosarcoma. *J Comput Assist Tomogr* 35(4):504–511
25. de Camargo OP, Baptista AM, Atanásio MJ, Waisberg DR (2010) Chondrosarcoma of bone: lessons from 46 operated cases in a single institution. *Clin Orthop Relat Res* 468(11):2969–2975. doi:10.1007/s11999-010-1368-7
26. Lodwick GS, Wilson AJ, Farrell C, Virtama P, Dittrich F (1980) Determining growth rates of focal lesions of bone from radiographs. *Radiology* 134(3):577–583
27. Freyschmidt J (1998) Standards and diagnostic strategies in diagnosis of bone tumors and tumor-simulating lesions [in German]. *Radiologie* 38(4):287–300
28. Takeuchi A, Yamamoto Y, Tsuneyama K, Cheng C, Yonekura H, Watanabe T, Shimizu K, Tomita K, Yamamoto H, Tsuchiya H (2007) Endogenous secretory receptor for advanced glycation end products as a novel prognostic marker in chondrosarcoma. *Cancer* 109(12):2532–2540. doi:10.1002/ncr.22731