




## Correction to: Lung metastasectomy after colorectal cancer: prognostic impact of resection margin on long term survival, a retrospective cohort study

Federico Davini<sup>1</sup> · Sara Ricciardi<sup>2</sup>  · Carmelina C. Zirafa<sup>1</sup> · Gaetano Romano<sup>1</sup> · Greta Ali<sup>3</sup> · Gabriella Fontanini<sup>3</sup> · Franca M.A. Melfi<sup>1</sup>

Published online: 14 December 2019  
© Springer-Verlag GmbH Germany, part of Springer Nature 2019

**Correction to: International Journal of Colorectal Disease**  
<https://doi.org/10.1007/s00384-019-03386-z>

The original version of this article, unfortunately, contained an error.

In Fig. 2 - panel d, incorrect image was published. The corrected Fig. 2 is shown as follows:

---

The online version of the original article can be found at <https://doi.org/10.1007/s00384-019-03386-z>

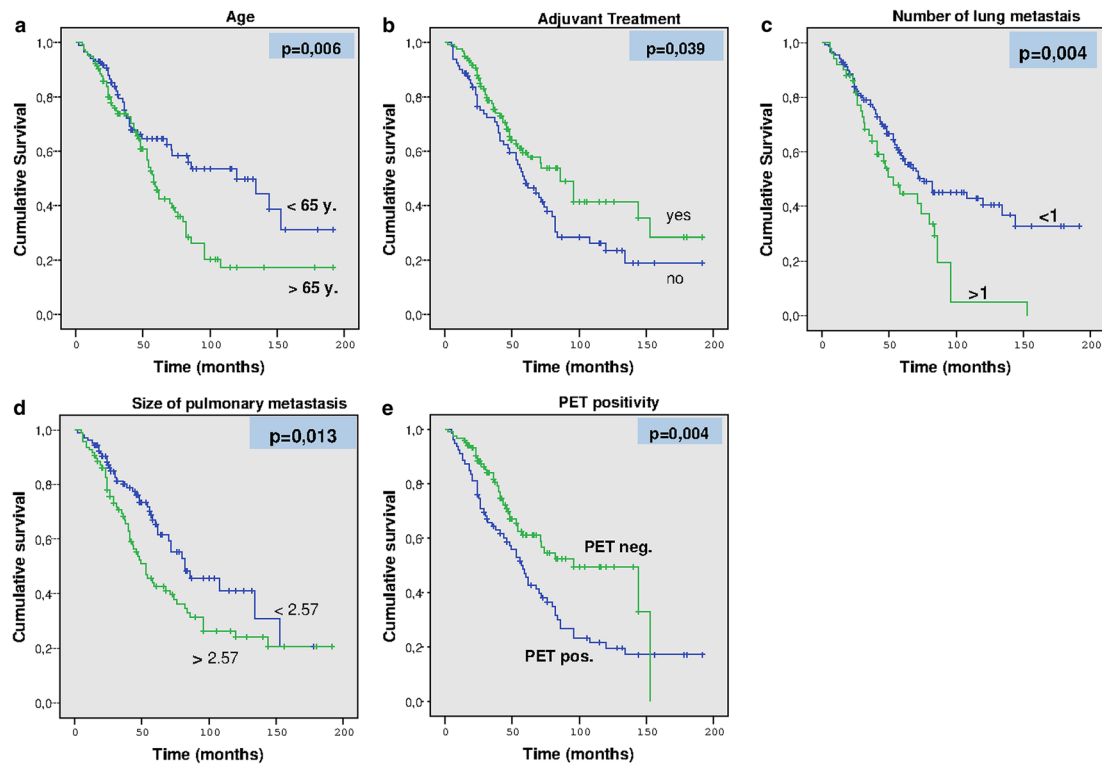
---

✉ Sara Ricciardi  
[ricciardi.sara87@gmail.com](mailto:ricciardi.sara87@gmail.com)

<sup>1</sup> Multispecialty Centre for Surgery, Minimally Invasive and Robotic Thoracic Surgery, University Hospital of Pisa, Pisa, Italy

<sup>2</sup> Division of Thoracic Surgery, Department of Surgical, Medical, Molecular, Pathology and Critical Care, University Hospital of Pisa, Pisa, Italy

<sup>3</sup> Unit of Pathological Anatomy, University Hospital of Pisa, Pisa, Italy



**Fig. 2** Kaplan-Meier curves showing according to age with a cut-off of 65 years (a), subadministration of adjuvant treatment (b), single versus multiple metastases (c), size of lung disease with a cut-off of 2.57 cm (d) and pet positivity of lung metastases (e)

**Publisher's note** Springer Nature remains neutral with regard to jurisdictional claims in published maps and institutional affiliations.