



## Correction: Matched comparison of catheter ablation versus conservative management for atrial fibrillation

Tetsuma Kawaji<sup>1,2</sup> · Satoshi Shizuta<sup>2</sup> · Kyohei Yamaji<sup>3</sup> · Munekazu Tanaka<sup>2</sup> · Kazuki Kitano<sup>2</sup> · Takanori Aizawa<sup>2</sup> · Shintaro Yamagami<sup>2</sup> · Akihiro Komasa<sup>2</sup> · Takashi Yoshizawa<sup>2</sup> · Masashi Kato<sup>1</sup> · Takafumi Yokomatsu<sup>1</sup> · Shinji Miki<sup>1</sup> · Koh Ono<sup>2</sup> · Takeshi Morimoto<sup>4</sup> · Takeshi Kimura<sup>2</sup>

Published online: 30 July 2022  
© Springer Japan KK, part of Springer Nature 2022

**Correction to: Heart and Vessels (2022) 37:1242–1254**  
<https://doi.org/10.1007/s00380-022-02023-0>

The original article has been updated.

In the original publication of the article, Fig. 3 was published incorrectly. The correct Fig. 3 is provided in this correction.

**Publisher's Note** Springer Nature remains neutral with regard to jurisdictional claims in published maps and institutional affiliations.

---

The original article can be found online at <https://doi.org/10.1007/s00380-022-02023-0>.

---

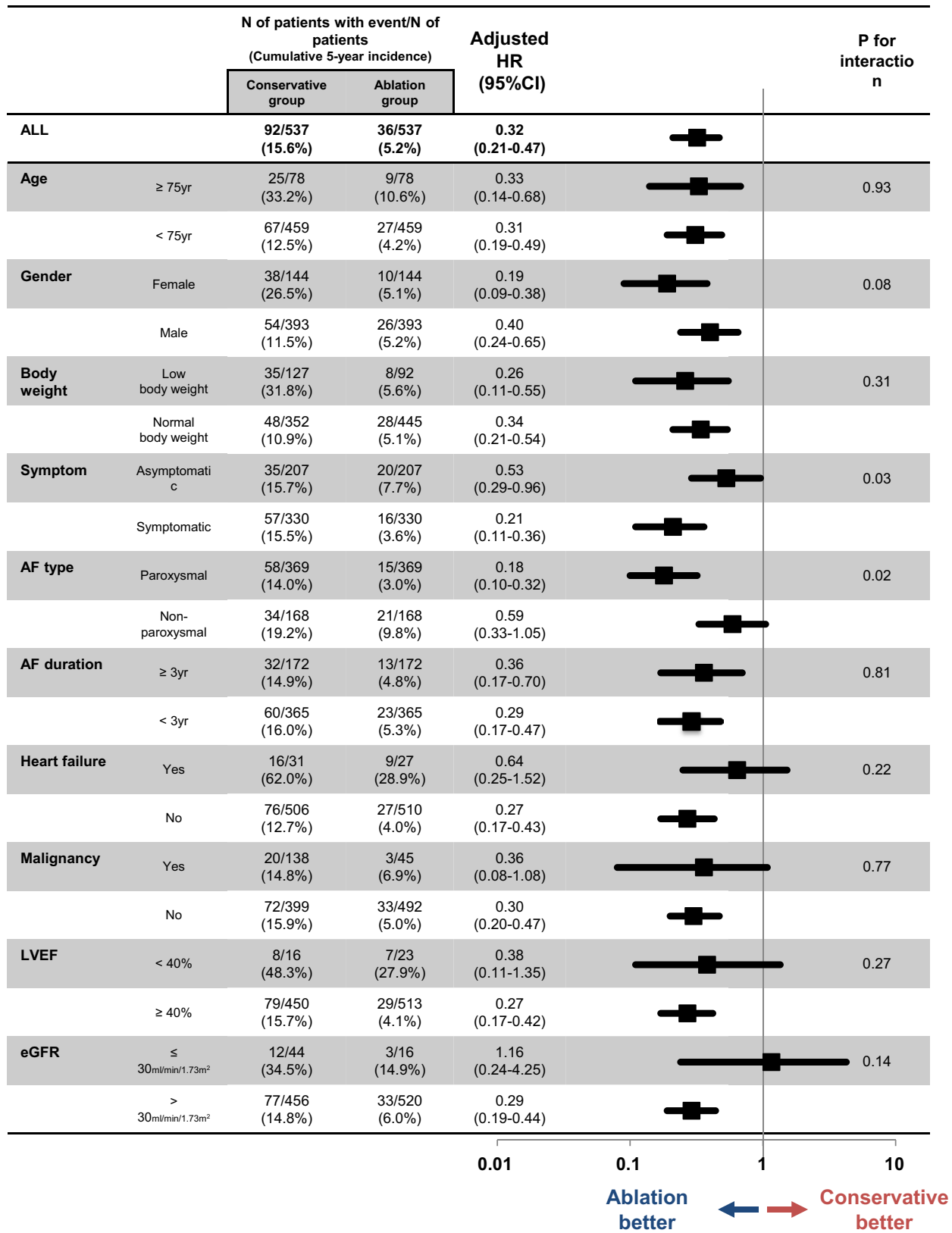
✉ Satoshi Shizuta  
shizuta@kuhp.kyoto-u.ac.jp

<sup>1</sup> Department of Cardiology, Mitsubishi Kyoto Hospital, Kyoto, Japan

<sup>2</sup> Department of Cardiovascular Medicine, Graduate School of Medicine, Kyoto University, Kyoto, Japan

<sup>3</sup> Division of Cardiology, Kokura Memorial Hospital, Kokura, Japan

<sup>4</sup> Department of Clinical Epidemiology, Hyogo College of Medicine, Nishinomiya, Japan



**Fig. 3** Sub-group analysis for the primary outcome measure. Low body weight indicates <55 kg in men and <50 kg in women. AFatrial fibrillation, CIconfidence interval; eGFRestimated glomerular filtration rate, HRhazard ratio, LVEFleft ventricular ejection fraction