

• ERRATUM •

DOI: <https://doi.org/10.1007/s00376-021-1017-y>.

## Erratum to: Implications from Subseasonal Prediction Skills of the Prolonged Heavy Snow Event over Southern China in Early 2008

Keyue ZHANG<sup>1</sup>, Juan LI<sup>1,2</sup>, Zhiwei ZHU<sup>1,2</sup>, and Tim LI<sup>1,3</sup>

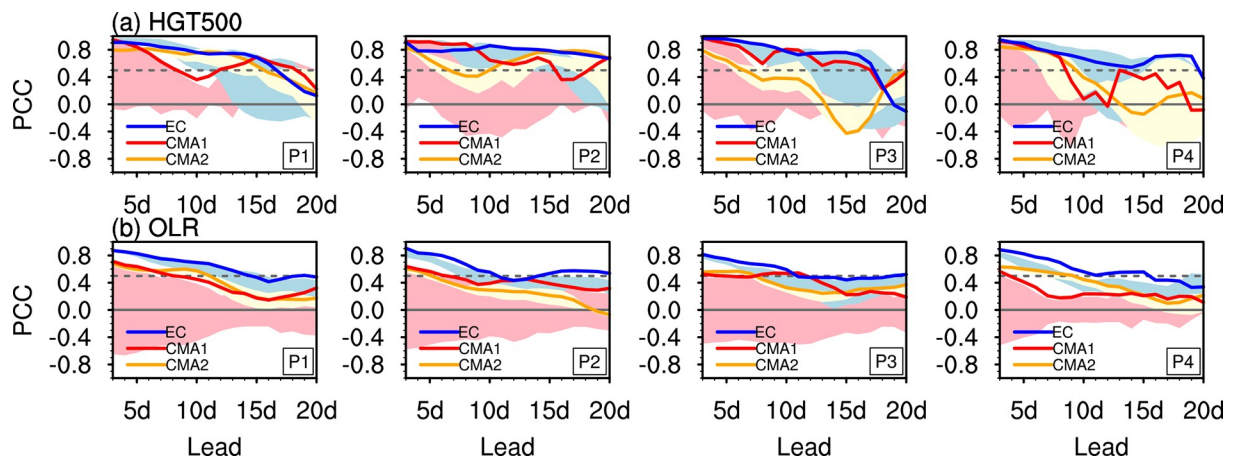
<sup>1</sup>Key Laboratory of Meteorological Disaster, Ministry of Education (KLME)/Joint International Research Laboratory of Climate and Environment Change (ILCEC)/Collaborative Innovation Center on Forecast and Evaluation of Meteorological Disasters (CIC-FEMD), Nanjing University of Information Science and Technology, Nanjing 210044, China

<sup>2</sup>State Key Laboratory of Numerical Modeling for Atmospheric Sciences and Geophysical Fluid Dynamics (LASG), Institute of Atmospheric Physics, Chinese Academy of Sciences, Beijing 100029, China

<sup>3</sup>International Pacific Research Center and Department of Atmospheric Sciences, University of Hawaii at Manoa, Honolulu 96822, Hawaii

**Erratum to:** Zhang, K. Y., J. Li, Z. W. Zhu, and T. Li, 2021: Implications from subseasonal prediction skills of the prolonged heavy snow event over southern China in early 2008. *Adv. Atmos. Sci.*, **38**(11), 1873–1888, <https://doi.org/10.1007/s00376-021-0402-x>.

In the original publication of this article, the blue lines (PCC skill of 500-hPa geopotential height over mid-high latitudes between the observation and ECWMF) in Fig. 8a was misplaced. The correct Fig. 8 is shown below. The associated description of “other than in P2–P3” should be “other than in P2” in section 3.3. Neither the abstract nor the conclusions are impacted.



**Fig. 8.** As in Fig. 3 but for (a) 500-hPa geopotential height over (20°–90°N, 30°–180°E) and (b) OLR over (30°S–30°N, 30°–180°E).

The online version of this original article can be found at <https://doi.org/10.1007/s00376-021-0402-x>.