



Correction to: Volumetric study of a turbulent boundary layer and swept impinging oblique SBLI at Mach 2.3

James A. S. Threadgill¹ · Jesse C. Little¹

Published online: 5 September 2023
© Springer-Verlag GmbH Germany, part of Springer Nature 2023

Correction to: Experiments in Fluids (2022) 63: 145
<https://doi.org/10.1007/s00348-022-03433-6>

The original article has been updated accordingly.

Figure 11b has been incorrectly published in the original publication of the article. The correct figures are given below.

The original article can be found online at <https://doi.org/10.1007/s00348-022-03433-6>.

✉ James A. S. Threadgill
jthreadgill@arizona.edu
Jesse C. Little
jesselittle@arizona.edu

¹ Department of Aerospace and Mechanical Engineering,
University of Arizona, 1130 N Mountain Ave., Tucson,
AZ 85721, USA

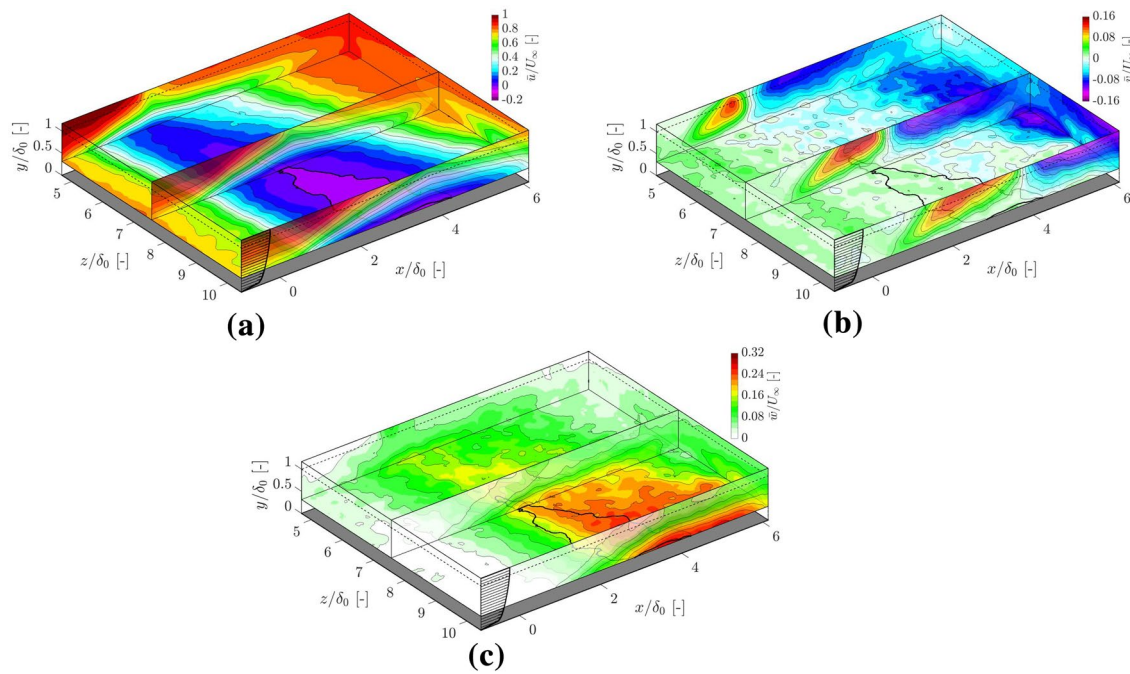


Fig. 11 Mean velocity fields within SBLI. The central and nearside spanwise contour planes are displayed semi-transparent. Reversed streamwise velocity is indicated by the thick black contour. See Fig. 9 for full description of remaining plot format

Publisher's note Springer Nature remains neutral with regard to jurisdictional claims in published maps and institutional affiliations.