

CORRECTION

Correction to: Caribbean corals exhibit species-specific differences in competitive abilities with an aggressive encrusting alga, *Ramicrusta textilis*

Karli J. Hollister¹  · Rosmin S. Ennis¹ · Heather L. Spalding² · Paul W. Gabrielson³ · Tyler B. Smith¹

Published online: 23 September 2021
© Springer-Verlag GmbH Germany, part of Springer Nature 2021

Correction to: Coral Reefs

<https://doi.org/10.1007/s00338-021-02172-0>

Figure 2 was rendered incorrectly in the original publication and has been thus corrected.

The original article can be found online at <https://doi.org/10.1007/s00338-021-02172-0>.

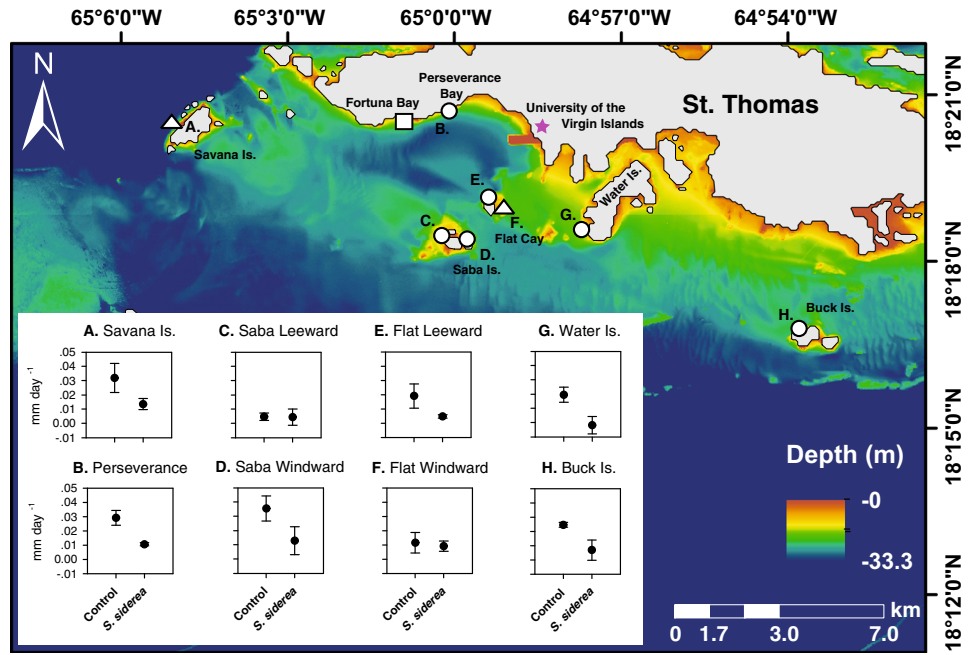
✉ Karli J. Hollister
karlihollister@gmail.com

¹ Center for Marine and Environmental Studies, University of the Virgin Islands, 2 John Brewers Bay, Saint Thomas, VI 00802, USA

² Department of Biology, College of Charleston, 66 George Street, Charleston, SC 29424, USA

³ Department of Biology and Herbarium, University of North Carolina Chapel Hill, Coker Hall CB-3280, 120 South Rd, Chapel Hill, NC 27599-3280, USA

Fig. 2 Map of the southwest side of St. Thomas with study sites. Shape indicates which study corresponds to which sites (square = Study 1 only, triangle = Study 1 and Study 2, circle = Study 2 only). Gray areas show landmasses and color indicates depth. Inset shows average linear growth rates of *Ramircrusta textilis* (\pm SE) on controls and *Siderastrea siderea* colonies across sites from Study 2



Publisher’s Note Springer Nature remains neutral with regard to jurisdictional claims in published maps and institutional affiliations.