

Stars and stripes: biofluorescent lures in the striated frogfish indicate role in aggressive mimicry

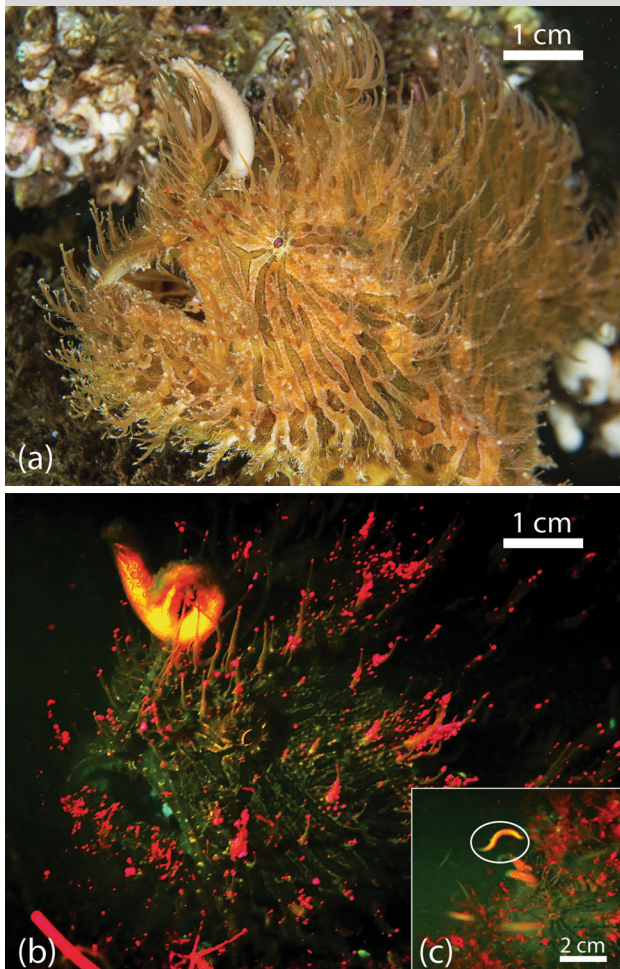



Fig. 1 *Antemarius striatus* under **a** normal light and **b** fluorescent light and **c** worm under fluorescent light

References

- Pietsch TW, Grobecker DB (1987) Frogfishes of the world: systematics, zoogeography, and behavioral ecology. Stanford University Press, Palo Alto
- Ramaiah N, Chandramohan D (1992) Occurrence of *Photobacterium leiognathi*, as the bait organ symbiont in frogfish *Antemarius hispidus*. Indian J Geomarine Sci 21:210–211
- Sparks JS, Schelly RC, Smith WL, Davis MP, Tchernov D, Pieribone VA, Gruber DF (2014) The covert world of fish biofluorescence: a phylogenetically widespread and phenotypically variable phenomenon. PLoS One 9:e83259

Electronic supplementary material The online version of this article (doi:[10.1007/s00338-016-1493-1](https://doi.org/10.1007/s00338-016-1493-1)) contains supplementary material, which is available to authorized users.

M. De Brauwer  (✉) · J.-P. A. Hobbs
 Department of Environment and Agriculture, Curtin University, Perth, WA 6485, Australia
 e-mail: maarten.debrauwer@curtin.edu.au

Received: 12 June 2016 / Accepted: 4 August 2016 / Published online: 17 August 2016
 © Springer-Verlag Berlin Heidelberg 2016

Coral Reefs (2016) 35:1171
 DOI 10.1007/s00338-016-1493-1