

Erratum to: Precious coral and rock sponge gardens on the deep aphotic fore-reef of Osprey Reef (Coral Sea, Australia)

G. Wörheide · S. Vargas · C. Lüter ·
J. Reitner

Published online: 18 October 2011
© Springer-Verlag 2011

Erratum to: Coral Reefs (2011) DOI 10.1007/s00338-011-0802-y

During the course of video/still image analysis, some pictures unfortunately appear to have been mixed up. The coral colonies shown in Fig. 1 have not been sampled, and their identity is not confirmed. However, numerous *Corallium* sp. colonies were found at the same site in greater depth (602–627 m), as shown in Fig. S1 (attached), and their identity was confirmed by DNA barcoding. We would like to emphasize that the main message of our Reef Site article, the first discovery of precious corals on the aphotic reef slope of Osprey Reef, is still unchanged. We thank Rob Beaman (JCU) for pointing this out to us and Sarah Adolf (LMU) for assistance with DNA barcoding.

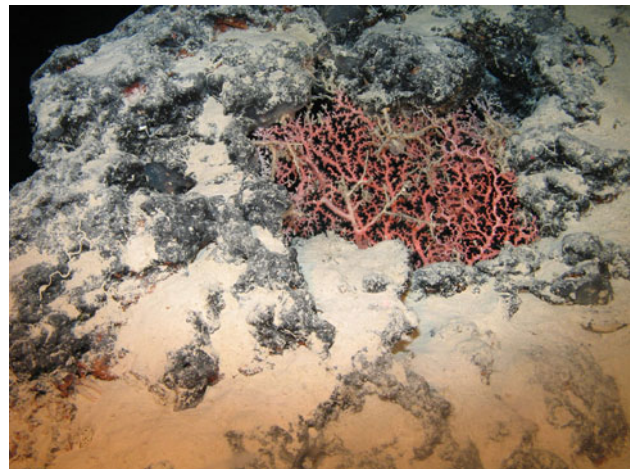


Fig. S1 *Corallium* sp. in 627 m depth at Osprey Reef (Coral Sea) (reddish colony in the center, horizontal size approx. 40 cm)

The online version of the original article can be found under
doi:[10.1007/s00338-011-0802-y](https://doi.org/10.1007/s00338-011-0802-y).

G. Wörheide (✉) · S. Vargas
Department für Geo- und Umweltwissenschaften &
GeoBio-Center, Ludwig-Maximilians-Universität München,
Richard-Wagner-Str. 10, 80333 Munich, Germany
e-mail: woerheide@lmu.de

C. Lüter
Museum für Naturkunde, Leibniz-Institut für Evolutions- und
Biodiversitätsforschung an der Humboldt-Universität zu Berlin,
Berlin, Germany

J. Reitner
Courant Research Center Geobiology, Georg-August-Universität
Göttingen, Göttingen, Germany