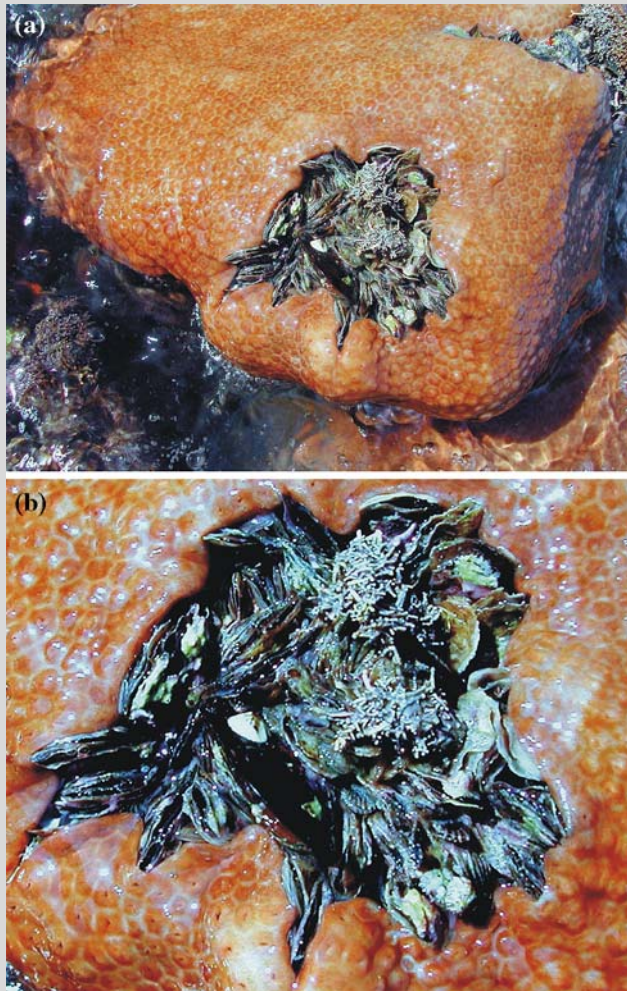


# The native *Palythoa caribaeorum* overgrows on invasive species in the intertidal zone

Received: 1 October 2008 / Accepted: 1 November 2008 / Published online: 14 November 2008  
© Springer-Verlag 2008



**Fig. 1** **a** Colonies of *Palythoa caribaeorum* overgrowing on intertidal *Isognomon bicolor* bank, **b** close-up of overgrown *I. bicolor*

## Reference

Wahl M (2008) Ecological lever and interface ecology: epibiosis modulates the interactions between host and environment. *Biofouling* 24:427–438

J. P. Mendonça-Neto (✉) · B. A. P. da Gama  
Departamento de Biologia Marinha, Universidade Federal Fluminense, PO Box 100644, CEP 24001-970 Niterói, RJ, Brazil  
e-mail: zepolicarpo@gmail.com

# Reef sites

Coral Reefs (2009) 28:497  
DOI 10.1007/s00338-008-0449-5