



# Correction: Utility of shear wave–based ultrasound elastography in chronic kidney disease and related pathological quantitative analysis

Jingping Wu<sup>1</sup> · Guanghan Li<sup>1</sup> · Jian Liu<sup>1</sup> · Weiliang Sun<sup>2</sup> · Jiang Liu<sup>3</sup> · Guming Zou<sup>3</sup> · Haitao Lu<sup>3</sup> · Min Zheng<sup>1</sup>

Published online: 26 May 2023

© The Author(s), under exclusive licence to European Society of Radiology 2023

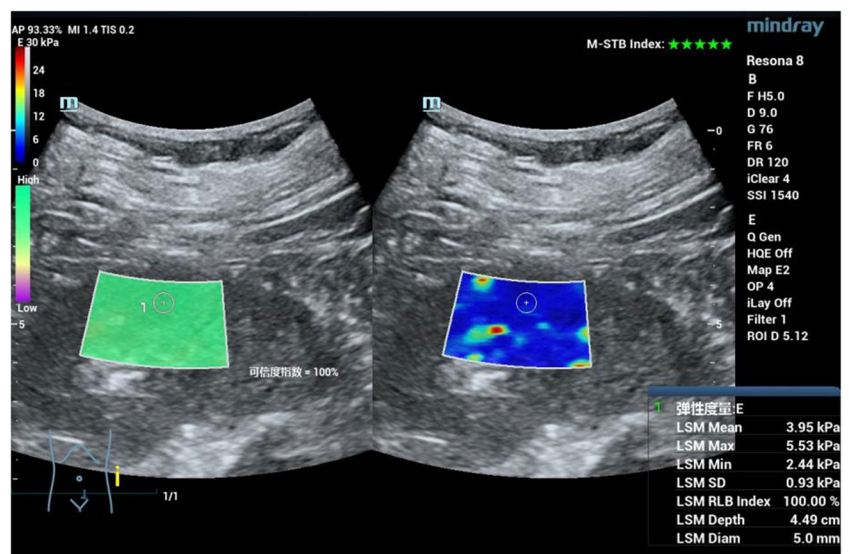
## Correction: European Radiology

<https://doi.org/10.1007/s00330-023-09507-1>

The original version of this article, published on 27 February 2023, unfortunately contained a mistake. Figure 1 was replaced

with a higher quality version image and the caption was corrected to reflect the mean elastic value (3.95 kPa) and M-STB index (five stars) of the new figure. The original article has been corrected.

**Fig. 1** Measurement of shear wave-based ultrasound elastography. The motion stability (M-STB) index displayed five stars and the reliability (RLB) map was uniform green (left panel), with an index 100%. The mean shear wave value was 3.95 kPa (right panel)



The original article can be found online at <https://doi.org/10.1007/s00330-023-09507-1>.

✉ Min Zheng  
zhengmin16@163.com

- <sup>1</sup> Department of Ultrasound Medicine, China-Japan Friendship Hospital, No.2 Yinghua East Street, Chaoyang District, Beijing 100029, China
- <sup>2</sup> Institute of Clinical Medical Sciences, China-Japan Friendship Hospital, No.2 Yinghua East Street, Chaoyang District, Beijing 100029, China
- <sup>3</sup> Department of Nephrology, China-Japan Friendship Hospital, No.2 Yinghua East Street, Chaoyang District, Beijing 100029, China

**Publisher's note** Springer Nature remains neutral with regard to jurisdictional claims in published maps and institutional affiliations.