



Correction to: Radiomics score predicts acute respiratory distress syndrome based on the initial CT scan after trauma

Sebastian Röhrich¹ · Johannes Hofmanninger² · Lukas Negrin³ · Georg Langs²  · Helmut Prosch¹

Published online: 4 May 2021

© The Author(s) 2021

Correction to: European Radiology.

<https://doi.org/10.1007/s00330-020-07635-6>

The original version of this article, published on 17 March 2021, unfortunately contained a mistake. The following correction has therefore been made in the original: The presentation of Fig. 3 was incorrect. The corrected figure is given below.

The online version of the original article can be found at <https://doi.org/10.1007/s00330-020-07635-6>

✉ Georg Langs
georg.langs@meduniwien.ac.at

¹ Department of Biomedical Imaging and Image-guided Therapy, Medical University of Vienna, Vienna, Austria

² Computational Imaging Research Lab, Department of Biomedical Imaging and Image-Guided Therapy, Medical University of Vienna, Waehringer Guertel 18-20, A-1090 Vienna, Austria

³ Department of Orthopedics and Trauma-Surgery, Medical University of Vienna, Vienna, Austria

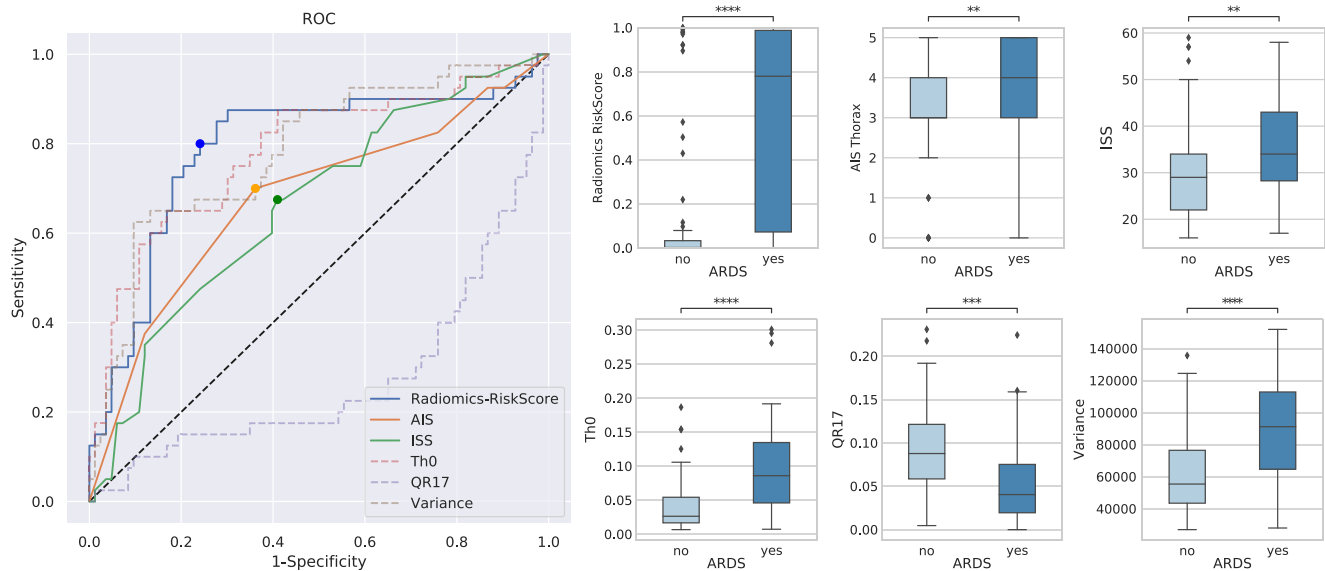


Fig. 3 Quantitative results: This receiver operating characteristic (ROC) curve shows the superior performance of radiomics-based prediction of acute respiratory distress syndrome (ARDS) compared to conventional trauma scores. In addition, the ROC curves for the three most relevant features as reported by the GBT ensemble are shown and the scores and

feature expressions are compared between ARDS and non-ARDS cases via boxplots and t tests. **: $1.00\text{e-}03 < p \leq 1.00\text{e-}02$; ***: $1.00\text{e-}04 < p \leq 1.00\text{e-}03$; ****: $p \leq 1.00\text{e-}04$. ISS, injury severity score; AIS, abbreviated injury scale (for thorax)

Open Access This article is licensed under a Creative Commons Attribution 4.0 International License, which permits use, sharing, adaptation, distribution and reproduction in any medium or format, as long as you give appropriate credit to the original author(s) and the source, provide a link to the Creative Commons licence, and indicate if changes were made. The images or other third party material in this article are included in the article's Creative Commons licence, unless indicated otherwise in a credit line to the material. If material is not included in the article's Creative Commons licence and your intended use is not permitted by statutory regulation or exceeds the permitted use, you will need to obtain permission directly from the copyright holder. To view a copy of this licence, visit <http://creativecommons.org/licenses/by/4.0/>.

Publisher's note Springer Nature remains neutral with regard to jurisdictional claims in published maps and institutional affiliations.