

Colonisation of hard substrata along a channel system in the deep Greenland Sea

Miriam Schulz · Melanie Bergmann ·
Karen von Juterzenka · Thomas Soltwedel

Received: 7 May 2010 / Accepted: 10 May 2010 / Published online: 30 May 2010
© The Author(s) 2010. This article is published with open access at Springerlink.com

Abstract The colonisation of hard substrata (HS) by epibenthic megafauna was studied by photographic surveys along the Ardencaple Canyon in the deep western Greenland Sea in 2000. Seven transects at 2,700–3,200 m water depth showed generally low densities of dropstones, sunken wood, and other substrata including anthropogenic material (range: 2–11 HS km⁻¹). Overall, 30 different taxa and morphotypes were found on or associated with HS. While the sea anemone *Bathypheilia margaritacea* and the pantopod *Ascorhynchus abyssii* dominated the fauna on the substrate surfaces, a ball-shaped morphotype of uncertain taxonomic origin characterised assemblages marginally associated with HS. Community analysis revealed differences in faunal patterns near the continental rise and towards the deep sea, but diversity and evenness did not differ significantly between the various regions. However, we conclude that dropstones and other hard substrata at the seafloor serve as colonisation islands and thereby generally increase small-scale habitat diversity in polar deep-sea environments.

Keywords Community structure · Channel systems · Epibenthic megafauna · Dropstone · Hard substrata · Ardencaple canyon · Greenland Sea · Arctic

Introduction

Geological and biogenic structures such as manganese nodules, whale bones, and sponge stalks represent hard substrata (HS) in soft-bottom deep-sea environments (e.g. Mullineaux 1987; Bennett et al. 1994; Beaulieu 2001; Baco and Smith 2003; Felley et al. 2008; Buhl-Mortensen et al. 2010). In Arctic seas, deglaciation at the end of the last ice age and recent seasonal melting processes in marginal ice zones (MIZ) provide a source for ice-rafted dropstones, which might serve as space-limited hard-bottom “islands” in pelagic sediments (Oschmann 1990; MacDonald et al. 2010).

While some epifaunal species are restricted to hard substrata, others show a high plasticity in terms of substrate choice (e.g. Riemann-Zürneck 1997). The dispersion of the HS-associated fauna depends on dispersion and settlement patterns of their larvae, substrata availability and food accessibility (Mullineaux 1988). However, effects of hard substrata on epibenthic community patterns have rarely been considered in attempts to assess species diversity in the deep sea. The lack of knowledge about deep-sea HS-communities, apart from hydrothermal vent and ridge sites, is mainly due to restrictions in sampling by conventional methods like box coring or dredging (Christiansen and Thiel 1992; Beaulieu 2001). Furthermore, because of the low density of megafauna in deep soft-bottom habitats, it is difficult to acquire quantitative information (Bluhm 1994). Seabed imaging techniques such as those used for the description of distribution and community patterns of

M. Schulz
Baltic Sea Research Institute, Warnemünde, Seestrasse 15,
18119 Warnemünde, Germany

M. Bergmann (✉) · T. Soltwedel
Alfred Wegener Institute for Polar and Marine Research,
Am Handelshafen 12, 27570 Bremerhaven, Germany
e-mail: Melanie.Bergmann@awi.de

K. von Juterzenka
Institute for Polar Ecology, Wischhofstrasse 1–3,
24148 Kiel, Germany

epibenthic megafauna from soft-bottom environments (e.g. Mayer and Piepenburg 1996; Ambrose et al. 2001; Bluhm et al. 2005; Soltwedel et al. 2009), and biogenic “substrate islands” such as sponge stalks (Beaulieu 2001) are valuable tools to quantitatively characterise epibenthic communities on hard substrata (Rice et al. 1982; Solan et al. 2003).

To our knowledge, a description of dropstone colonisation has so far relied on the material obtained by box core sampling in the Norwegian Sea (Oschmann 1990) and a camera survey in the Canada Basin (MacDonald et al. 2010). Both studies reported a high diversity of epibenthic colonisers although Oschmann’s (1990) study described only the epifauna of ten dropstones of ≤ 8 cm diameter.

The aim of the present study was to describe the colonisation of HS in the Ardencaple Canyon situated at 74–75°N and 7–13°W off the eastern Greenland coast, and to analyse the observed community patterns in relation to the channel-specific topography. This study complements investigations on distribution patterns of small benthic biota (bacteria to meiofauna; Soltwedel et al. 2005) and mega-epibenthic assemblages in and around the channel system (Juterzenka and Soltwedel, unpubl. data), which were part of the multidisciplinary German project ARK-TIEF II.

Materials and methods

Study area and seafloor photography

Investigations of epibenthic megafauna were conducted in the western Greenland Sea at 74–75°N and 10–11°W in the Ardencaple Canyon, ~ 250 km off the eastern Greenland coast (Fig. 1). Its proximal part is ~ 2 km wide, and the channel floor is ~ 100 m deeper than the surroundings (Krause and Schauer 2000). In summer, the area is located in the vicinity of the MIZ (Vinje 1977; Ramseier et al. 2001).

Photographs of the seafloor were taken by the towed Ocean Floor Observation System (OFOS) during the expedition ARK XVI/1 of RV *Polarstern* (July 2000) at $\sim 2,700$ – $3,000$ m water depth. The OFOS was towed along five transects crossing the channel, and two transects along the channel axis (Table 1). The OFOS frame was equipped with a still camera (Benthos), which was triggered manually or at 30-s intervals, allowing for up to 800 shots per track (Kodak Ektachrome 100 ASA slide film). Three laser pointers served as a size reference. The system was towed at ~ 1.5 m altitude with a drift velocity of ~ 0.5 knots. Voucher-specimens for ground-truthing were collected

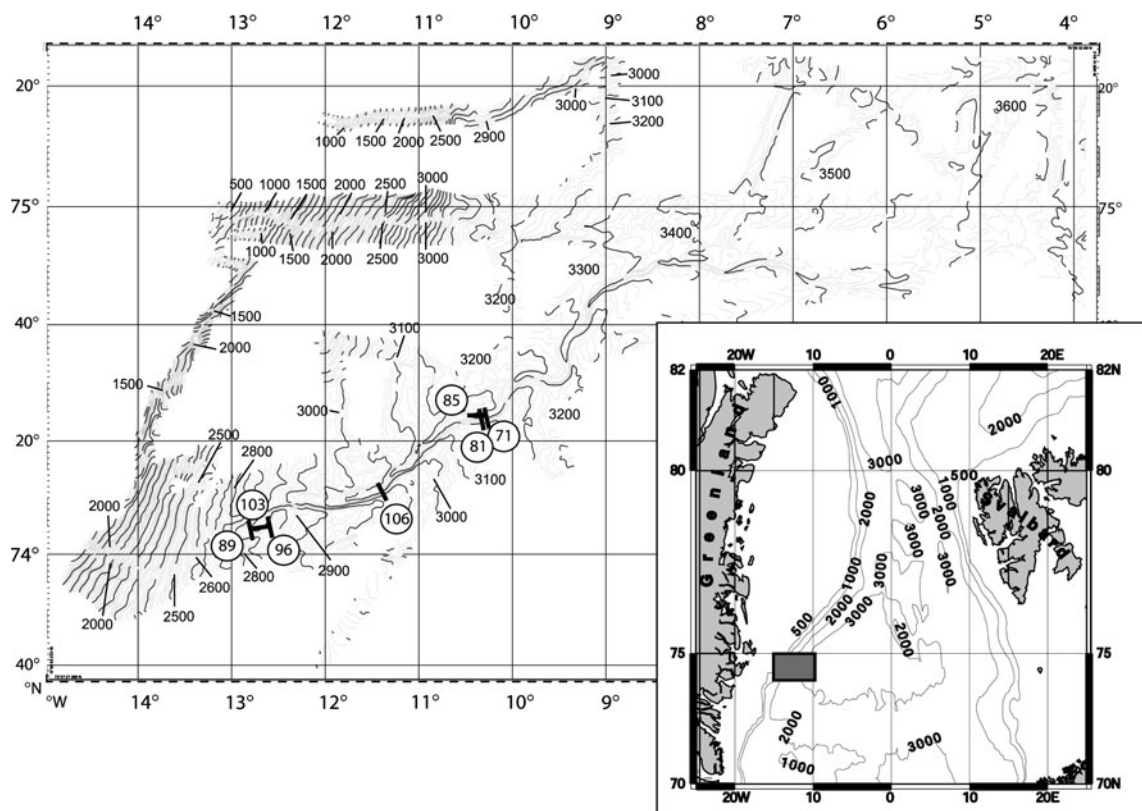


Fig. 1 Study sites in the proximal part of the Ardencaple Canyon east off Greenland; location of the sampling stations (numbers in the circles represent abbreviated station numbers, e.g. 71 = PS57-71; see also Table 1)

Table 1 Seafloor photography at the Ardencaple Canyon during expedition ARK XVI/1 in summer 2000

Station no.	Position at the beginning of the transect		Region and orientation of transects to channel axis	Length of transects at the seafloor (m)	Depth range (m)	No. of images analysed and identified HS	
	Latitude (N)	Longitude (W)				<i>n</i>	HS
PS57-71	74°22.2'	10°18.3'	East, across	6,170	2,960–3,220	73	18 (19)
PS57-81	74°25.2'	10°22.0'	East, across	5,610	3,130–3,210	10	12
PS57-85	74°24.0'	10°29.4'	East, along	3,700	3,190–3,210	12	12
PS57-89	74°02.5'	12°48.3'	West, across	5,600	2,760–2,840	75	16
PS57-96	74°03.4'	12°38.1'	West, across	5,120	2,780–2,880	42	47
PS57-103	74°05.1'	12°40.3'	West, along	5,490	2,830–2,870	20	20 (21)
PS57-106	74°11.9'	11°28.1'	Central, across	5,040	2,950–3,080	92	51 (54)

In parentheses: number of HS found at the transect

nearby by a small Agassiz trawl in 2002 (for details see Krause and Schauer 2000; Fahrbach 2002).

Image analysis

All slides (155 in total) showing HS > 10 cm² were analysed for the abundance and composition of epibenthic megafauna, using a stereomicroscope WILD M3B. All biota ≥ 0.5 cm were counted. The fauna linked to HS was divided into two groups of organisms, (1) specimens observed on the HS surface, and (2) specimens in close vicinity to the HS (“associated” with HS). All organisms linked to HS were identified to the highest taxonomic level possible (using Stephensen 1943, 1944; Gaevskaja 1948; Andersen 1971; Barthel and Tendal 1993; Witte 1995; Riemann-Zürneck 1997; Schuchert 2001). Where necessary, reference material was identified by expert taxonomists (see acknowledgements). Several structures were identified by colour, shape and general habitus (Table 2). However, it was impossible to further classify them because of a lack of recognisable characteristics. Colonies of sponges, bryozoans and other colonial organisms were counted as single individuals.

Because of a varying altitude of the OFOS, the camera footprint ranged from 0.7–3.0 m². Single large HS did not show all potentially associated fauna on the specific image. Abundances of HS were normalised to a length of 1 km (HS km⁻¹). HS surfaces were measured using the software “POLY M” (©M. Peters), which enables area calculations on digital images. Abundances per m² HS, and abundances per m² seafloor were determined for the fauna observed on and associated with HS, respectively (Table 3). Three subsamples of 18–20 slides (taken at 30-s time intervals) were analysed from transect PS57-89 to determine if the anemone *Bathypheilia margaritacea*, the pantopod *Ascorhynchus abyssus* and the ball-shaped Morphotype I occur exclusively on HS or favour soft bottoms. The same

Table 2 Description of taxa and morphotypes

Taxa/morphotype	Description
Encrusting sponge	Bluish, flat sponge, crusty, white
Hydrozoa sp.	Capillary branched, thin braches
Actinaria?	Not clearly identified as <i>B. margaritacea</i> , similar shape and colour
Anthozoa sp.	Fan-shaped specimen, blue, triangular
cf. Bryozoa	Colonies rather flat, thick branches, white
Polychaeta, Sedentaria	3–4 cm tube, diameter of tentacle crown ~ 2 cm
Amphipoda sp.	White, ~ 2 cm length
Amphipoda sp.?	Not clearly identified as Amphipoda sp.
Stalked crinoid	Size ~ 10 cm, most probably <i>Bathycrinus carpenterii</i>
Asteroida sp.	White, habitus similar to <i>Poranimorpha tumida</i>
Morphotype I	Globular organisms, brown, mud ball-like
Morphotype II	Blue, roundly, partly osculae-like structures visible, probably sponge
Morphotype III	Light blue, oval, osculae-like structures visible, probably sponge
Morphotype IV	Brown, flat, osculae-like structures visible, probably sponge
Taxon I	Whitish, round, encrusting taxon
Taxon II	Blue, elongate (possibly egg masses)
Taxon III	Blue, big, massive specimen, irregular shape, 3–5 cm
Taxon IV	Dark-blue, round objects
Taxon V	Blue, small, round, rather flat objects
Taxon VI	Grey-blue objects, Ø ~ 1 cm
Taxon VII	Dark brown, small, round, flat, associated with HS
Taxon VIII	Light brown, globular-shaped object Ø 4–5 cm
Taxon IX	Eggplant-like shape, whitish, without structure, possibly holothuroid
Taxon X	Flat, oblong, lightly, about 5 cm, possibly crustacean

Table 3 List of taxa that were found associated with or on HS and abundances (ind. m⁻² HS) along various segments of the OFOS transects

Taxon	Station																U-value					
	East								West													
	PS57-71 Edge	PS57-71 South	PS57-71 Axis	PS57-71 North	PS57-71 Edge	PS57-71 South	PS57-71 Axis	PS57-71 North	PS57-71 Edge	PS57-71 South	PS57-71 Axis	PS57-71 North	PS57-71 Edge	PS57-71 South	PS57-71 Axis	PS57-71 North						
Porifera																						
Encrusting sponge																						
Cnidaria																						
Hydrozoa																						
Hydrozoa sp.																						
<i>Candelastrum</i> sp.																						
Anthozoa																						
<i>Bathypheilia margaritacea</i>	113	285	31	280	118	23	155	687	290	60	147	566	275	216	434	588	438	873	59	634	588	
Actinaria ?		(0.3)					(0.4)	39	(0.2)		(0.3)	(0.2)	(0.2)	(0.1)	(0.1)	(0.3)	(0.2)	(0.2)	(0.2)	(0.2)	(0.5)	
Anthozoa sp.											(0.2)	(0.1)	(0.2)	12	55	28	37	12		20		
Bryozoa																						
cf. Bryozoa														4								
Mollusca																						
Gastropoda																						
Buccinid gastropod											23			17	42	4	10					
Annelida														(0.1)			(0.1)					
Polychaeta																						
Polychaeta, Seditaria																						
Chelicerata																						
Pantopoda																						
<i>Ascorhynchus abyssii</i>																						
Crustacea																						
Isopoda																						
<i>Saduria</i> sp.																						
Amphipoda																						
Amphipoda sp.	172																					
Amphipoda ?																						
Echinodermata																						
Crinoidea																						
Stalked crinoid																						
Asteroidea																						
Asteroidea sp.																						12

Table 3 continued

Taxon	Station		West										U-value			
	East	West	PS57-71 Edge	PS57-71 South Axis	PS57-71 North Axis	PS57-71 Edge	PS57-71 South Axis	PS57-71 North Axis	PS57-71 Edge	PS57-71 South Axis	PS57-71 North Axis	PS57-106 South Axis		PS57-106 North Axis	Median East	Median West
Holothuroidea																
<i>Elpidia heckeri</i>		14														
"Taxa of uncertain identification level"																
Sponge-like morphotype:																
Morphotype I	(2.0)	(1.7)	(3.7)	(7.9)	(2.2)	(5.6)	(1.1)	(3.7)	(0.6)	(0.9)	(1.2)	(2.8)	(1.2)	(4.8)	(6.0)	(6.1)
Morphotype II										14	6	84	271	54	90	41
Morphotype III																
Morphotype IV										(0.3)						(0.2)
Taxon I											20					
Taxon II	13				8			6			3	26			7	
Taxon III											22	28		15	31	
Taxon IV											4	7	29	2		
Taxon V										+					+	
Taxon VI																
Taxon VII																
Taxon VIII																
Taxon IX																
Taxon X																
Mean total abundance	285	306	178	280	134	428	938	341	60	304	710	287	458	885	846	665
Number of taxa	2	3	2	1	3	3	2	4	1	8	3	4	9	8	9	8
Diversity <i>H'</i>	0.672	0.296	0.462	0	0.449	0.916	0.581	0.566	0	1.618	0.586	0.217	1.567	1.319	1.181	1.129
Evenness <i>J</i>	0.969	0.269	0.667	-	0.408	0.834	0.838	0.408	-	0.778	0.533	0.157	0.713	0.635	0.538	0.543

Crosses indicate colonies of organisms. Overall abundance, number of taxa, diversity *H'*, and evenness *J* for various segments of the OFOS transects

* Significant at *p* < 0.05

sub-samples were used to estimate densities of the three selected species on HS.

Data analysis

OFOS transects were grouped a priori according to their location along the channel (“West”, “Central”, and “East”) and topographic segments of the OFOS transects (“northern slope”, “southern slope”, “channel-axis”, “channel-edge”). Differences in the community patterns between the channel areas and the topographic segments, respectively, were tested by ANOSIM (Clarke and Warwick 1994). The community analysis was based on the mean abundance of 22 taxa on HS at each of the 21 segments from the five transects. Hydrozoa sp., and Taxa V and VI (see Table 2) were excluded from the community analysis because it was impossible to quantify these structures (boundaries of colonies were not always visible). These taxa were rare and never covered large areas of the dropstones.

Using PRIMER V 5.0 (Plymouth Marine Laboratory, UK), a similarity matrix was calculated based on the Bray–Curtis coefficient (Bray and Curtis 1957). Square-root transformation of abundances was used to buffer the influence of very abundant taxa (Field et al. 1982). Because of a lack of replicates, results from transect PS57-106 were excluded from the test. Results of the ANOSIM tests were depicted through multi-dimensional scaling (MDS; Kruskal 1977). Total abundance, number of taxa, evenness J (Pielou 1977) and diversity H' (log-transformed; Shannon and Weaver 1949) were tested for significant differences between regions by Mann–Whitney U tests. A Spearman rank correlation was used to test the relationship between the number of individuals linked to the HS and the size of the HS. “Discriminator taxa” were identified by the SIMPER routine (Clarke 1993).

Results

Composition and densities of hard substrata

In total, 155 images showed 181 HS, 176 of which could be measured and analysed. Three groups of HS were distinguished (Fig. 2). In addition to dropstones and pieces of wood, a diverse third group, defined as “others”, contained anthropogenic debris, pieces of bones, and some indefinable structures. While stones accounted for >50% of HS, wooden structures ranged between 6 and 31%, similar to the third group (“others”). Over the whole study area, dropstones accounted for 81% of the HS (Fig. 3a).

Normalised densities of HS >10 cm² on transects ranged between 2.1 and 10.8 HS km⁻¹. However, specific segments of the transects showed a higher variability, with

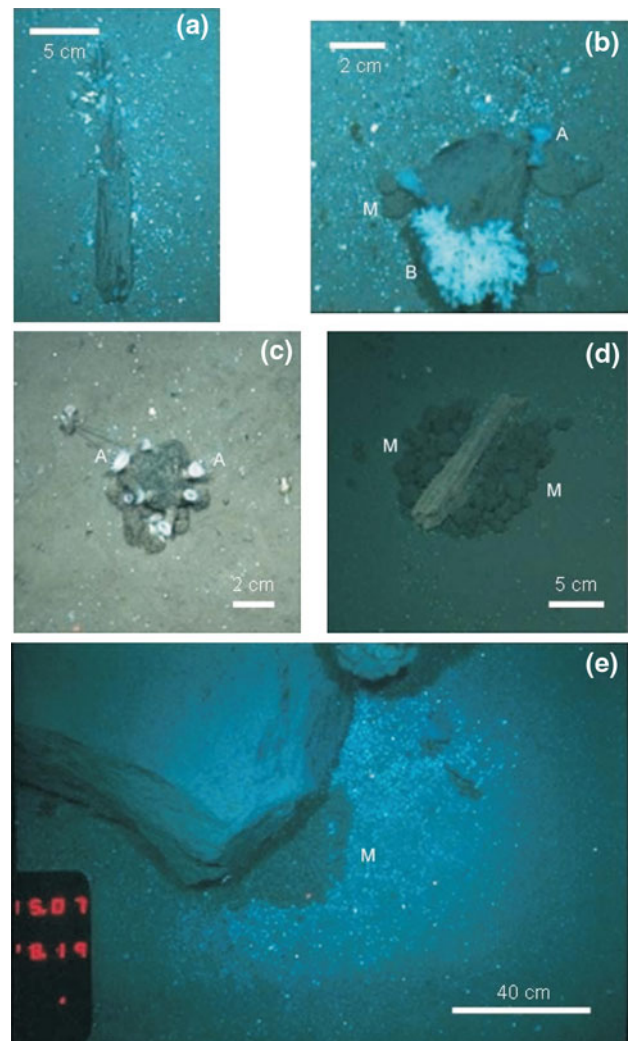


Fig. 2 In situ images of HS-linked fauna in the Ardencaple Canyon and the surrounding deep Greenland Sea: *M* morphotype I, *B* Bryozoa sp., *A* *Bathypheilia margaritacea*; **a** rocky substrate, **b** dropstone, **c** dropstone colonised by anemones, **d** wood and **e** large stone with associated aggregation of mudball-like morphotype I

a maximum density of 48.2 HS km⁻¹ at the “southern slope” of the transect PS57-106. HS sizes varied between 11 and 7,684 cm² with 84.7% of the HS being smaller than 150 cm². On average, some 25% of HS were not colonised by megafauna.

Fauna on and associated with hard substrata

Epifaunal abundance on HS varied between 0 and 1,103 individuals m⁻² HS. Densely colonised and bare HS were observed in close neighbourhood. Although the coverage of HS was variable, the size of a particular HS correlated with the abundances of the individuals found on and associated with HS, respectively ($R_{\text{on HS}} = 0.44$, $p < 0.001$); $R_{\text{associated with HS}} = 0.34$, $p < 0.001$; Fig. 3a, b). Most HS harboured <15 individuals (Fig. 3a).

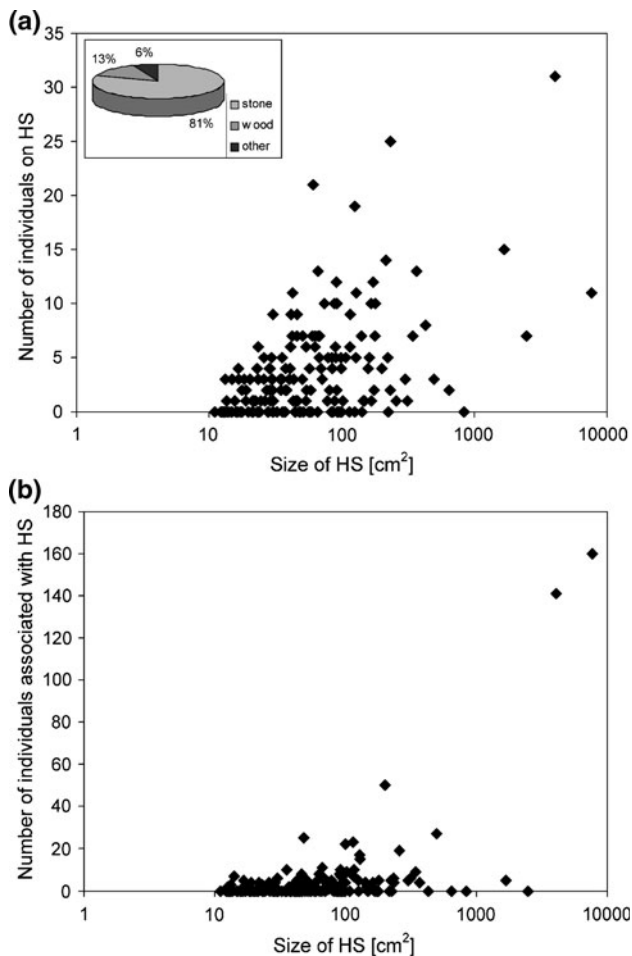


Fig. 3 Abundances of organisms vs. substrate size $>10\text{ cm}^2$ (note: size of substrata is in log scale). **a** Individuals observed on the surface of HS. The pie chart shows the proportions of the different groups of HS, integrated over the whole study area. **b** Individuals associated with HS

HS-associated organisms mostly accounted for <10 individuals (Fig. 3b).

Only a fraction of the species visible on images was collected by trawl such that only a few taxa could be identified to species or genus level. The ball-shaped morphotypes I–IV very likely included sponges, since they resemble small-sized deep-sea sponges such as *Thenea abyssorum* in shape, size and colour. Overall, 23 taxa and morphotypes (Table 2) were found on the surface of HS; 13 appeared to be associated with HS. Six of the latter occurred on the surrounding sediment surface as well. Thus, a total of 30 taxa were linked to HS (Table 3).

The small white actinian *Bathypheilia margaritacea* was abundant in all channel segments ($23\text{--}873\text{ ind. m}^{-2}$) with highest densities on HS from the centre of the study area (Table 3). At most segments, *B. margaritacea* accounted for 50% of the colonisers. We also observed anemones on small stones, shell fragments, snails and sea urchin tests.

Sometimes, no substrate could be recognised underneath the anemone, at all.

The pantopod *Ascorhynchus abyssi* occurred in lower densities ($0\text{--}258\text{ ind. m}^{-2}$) and was absent from some segments (Table 3). Generally, it was more abundant in the western part than in the eastern part of the channel.

The ball-shaped Morphotype I constituted the dominant group associated with HS ($0\text{--}7.9\text{ ind. m}^{-2}$) and was found at all segments, except for the “southern slope” of transect PS57-81 (Table 3). At five segments, Morphotype I was the only HS-associated taxon.

“Encrusting sponge”, Anthozoa sp., Bryozoa cf., Polychaeta sp., Crinoidea sp. (*Bathycrinus carpenterii*?), *Elpidia heckeri* as well as Taxa I, IV, VIII, and X on HS were exclusively observed in the western part of the study area (Table 3). Also, 8 out of 13 “associated taxa” were solely found in the west of the channel (Table 3). Morphotype I was more abundant at all “northern slopes” of the channel, compared with other channel segments.

Distribution of dominant taxa on hard substrata versus soft-bottom habitats

The most prominent taxa were investigated with respect to substrate preferences. The anemone *B. margaritacea* occurred in significantly higher densities on HS ($z = 19.6$, $p < 0.001$; Fig. 4a) than on sediments. Densities ranged from 0.3 to 2.1 ind. m^{-2} on HS and did not exceed 1 ind. m^{-2} on sediments. The pantopod *A. abyssi* and the ball-shaped Morphotype I (associated fauna) preferred soft-bottom habitats over hard substrates ($z = 1.7$, $p > 0.05$; Fig. 4b, respectively, $z = 2.3$, $p < 0.05$; Fig. 4c).

Community structure

Community patterns were described for fauna from HS. ANOSIM indicated no significant faunal differences between different segments of the transects. The number of taxa per segment ranged between one and nine and increased towards the continental rise. This trend concurred with an increase in mean total densities (Table 4).

The taxonomic composition of eastern and western transects differed significantly (global $R = 0.57$; $p < 0.05$). While the regions “East” and “West” differed significantly in the number of taxa and their mean overall abundances, this was not true for diversity and evenness (Table 4). Results from MDS indicated that the “central” transect (PS57-106) was more similar to the westernmost transects than to the eastern parts of the study area (Fig. 5). The regions “East” and “West” were distinguished mainly by the presence or absence of *B. margaritacea* and *A. abyssi* (Table 4). Five taxa accounted for 75% of the differences between the station groups. While Amphipoda sp. was a

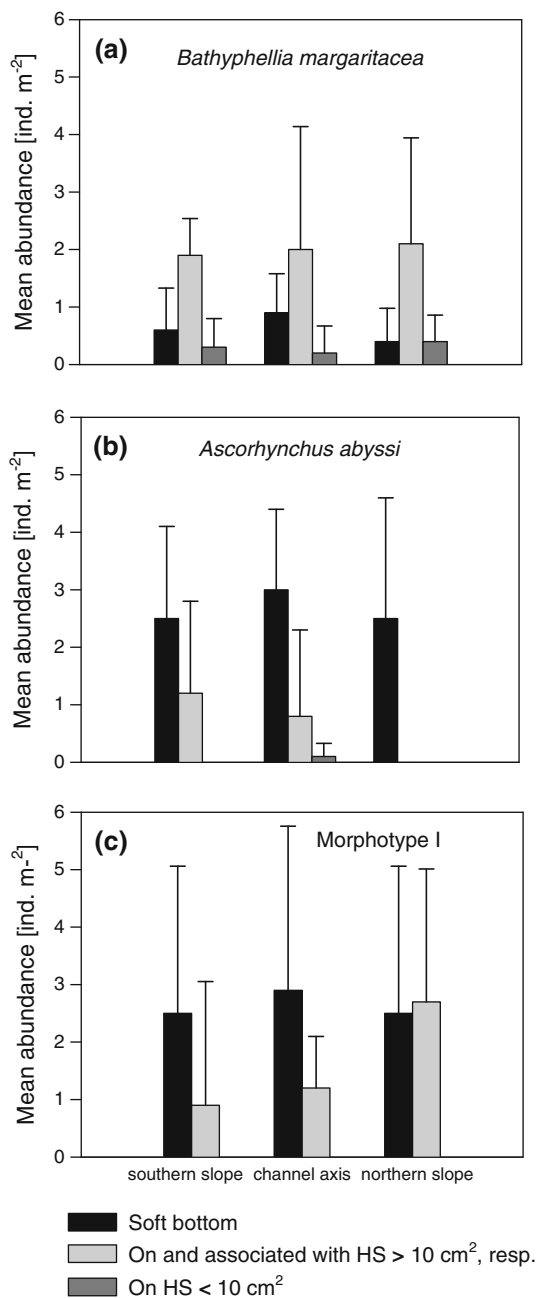


Fig. 4 Mean abundance of dominant taxa along various sections of transect PS57-89 crossing the channel profile: **a** *BathypHELLIA margaritacea*; **b** *Ascorhynchus abyssii*; **c** Morphotype I

discriminating taxon of the region “East”, Morphotype II was characteristic of the western part.

Discussion

Hard substrata as habitat islands?

The presence of dropstones can enhance epifaunal densities and diversity of the deep seafloor (Syvitski et al. 1989;

MacDonald et al. 2010), although ice-rafted debris on present-day abyssal plains is confined to environments north of 40°N (Kidd and Huggett 1981). In these areas, debris from melted sea ice and icebergs are available for the settlement of larvae and juveniles of benthic organisms.

Epifaunal abundance on hard substrates (this study) as well as on sponge stalks in the deep Pacific was positively correlated with substrate size (Beaulieu 2001). No such relationship was found for manganese nodules and whale bones (Mullineaux 1987; Bennett et al. 1994), where surface structure and chemistry might affect colonisation.

Seafloor imagery reveals that hard substrata can influence small-scale colonisation patterns in different ways. The surface of dropstones is subject to changes over time, which may affect the recruitment success (Mullineaux 1988). They can serve as substrate for sessile colonisers, notwithstanding a considerable variability in their occurrence, density and composition. Indeed, the dense colonisation of various dropstones indicates their role as oases for HS-limited taxa (e.g. encrusting sponge-like forms, hydrozoan colonies). On the other hand, they obviously alter the micro-environment of adjacent soft-bottom benthos, favouring aggregations of organisms associated to the structures. This is especially true for wooden debris found in the Ardencaple Canyon, which often appeared to be degraded. The majority of wooden surfaces were not colonised, but showed conspicuous aggregations of associated biota. Similarly, Bennett et al. (1994) found macroorganisms predominantly in association with organically-rich whale bones, as microbial degradation of the bone’s surface may restrict an epifaunal colonisation.

Debris of anthropogenic origin appears to be widespread on continental shelves and slopes along the European coasts (Galgani et al. 2000), though information about colonisation is rare. However, *BathypHELLIA margaritacea* was found to be attached to litter collected in the Molloy Hole (Bergmann, unpublished data). There was no evidence for macro-colonisation on beached debris observed in the Antarctic (Convey et al. 2002). Nevertheless, plastic and metallic surfaces might be covered by microbiota (Fera et al. 1987).

Colonisation patterns of hard substrata in the western Greenland Sea

Dropstones from the deep Arctic seafloor differ considerably from rocky shallow-water habitats such as boulder patches in the Beaufort Sea, where only a small proportion of the substrate surface is bare rock. They represent hard-bottom oases, with the richest and most diverse biological community in the area and intense competition for space and light (Dunton et al. 1982; Dunton and Schonberg 2000; Konar and Iken 2005; MacDonald et al. 2010).

Table 4 Structural community parameters (according to Clarke 1993) at various channel regions

Discriminator taxa	Mean abundances (Ind. m ⁻²)		Mean dissimilarity (δ_k)	SD (δ_k)	%
	East	West			
<i>B. margaritacea</i>	220.2	406.5	15.5	1.3	27.5
<i>A. abyssi</i>	45.1	54.8	9.6	1.2	17.1
Morphotype II	0	51.8	7.2	1.1	12.8
Amphipoda sp.	48.9	1.5	6.4	0.7	11.4
Actinaria ?*	6.4	13.7	3.8	1	6.8

δ_k average dissimilarity, SD (δ_k) standard deviation, % percentage contribution of each species to the discrimination of station groups

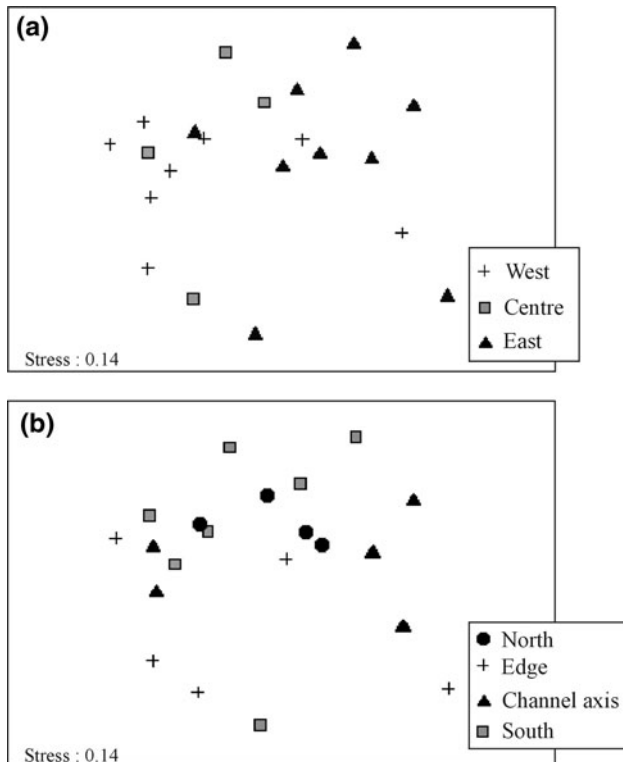


Fig. 5 MDS plot of HS-linked organisms along the Ardencaple Canyon: **a** Symbols reflect the relative position of transects along the channel course; **b** Symbols reflect relative position of single segments along the channel course

The anemone *B. margaritacea* and the pantopod *Ascorhynchus abyssi* dominated the fauna on hard substrata from the Ardencaple Canyon. *Bathypheilia margaritacea* is flexible in its choice of substrata and was also recorded from small stones, shell fragments or sea urchin tests. As with various other sea anemones, they were also reported to live loosely attached to the sediment (Riemann-Zürneck 1997), which might contribute to their wide distribution in the study area (Bergmann et al. 2009; Soltwedel et al. 2009). Sponges and bryozoans are often restricted to regions, where bottom currents provide favourable feeding conditions (Gutt and Schickan 1998; Starmans et al. 1999). Thus, an elevated position providing an enhanced

horizontal particle flux could favour the survival of suspension feeders in a deep-sea “low-flow” environment, as has been shown for the colonisation of manganese nodule habitats in the northern Pacific (Mullineaux 1988). The motile pantopod, by contrast, is probably attracted to prey such as hydrozoans and other epibiota. Spatial pattern of motile fauna may reflect the distribution of their prey (Thomasson and Tunberg 2005), for instance amphipods feeding on sessile organisms on sponge stalks (Beaulieu 2001). Oschmann (1990) reported low numbers of predators on dropstones, but noted caprellid amphipods and isopods occasionally climbing on bryozoans colonies. In this study, motile fauna in the vicinity of hard substrates included the small-sized holothurian *Elpidia heckeri* as well as amphipods and gastropods, probably grazing on deposited organic matter.

Large rocks were rare and sparsely colonised, sometimes showing extensive accumulations of the ball-shaped Morphotype I at their periphery. This morphotype, although larger in size, resembles foraminiferal mudballs, which are common in the north Atlantic and Greenland–Iceland–Norwegian Seas (Linke 1989; Gooday et al. 1997). Gooday et al. (1997) suggested that mudball-like komokiaceans might be deposit-feeders, which will profit from an enhanced deposition of organic matter caused by small-scale flow patterns surrounding large structures (Sokolova 2000). So far, it could be neither confirmed nor disproved that Morphotype I contains komokiaceans (Gooday, pers. comm.).

Influence of the channel topography on substrata availability and colonisation

The segments investigated from the Ardencaple Canyon floor and the levees showed no significant faunal differences, similar to the patterns of activity and biomass of the small benthic biota in the area. (Soltwedel et al. 2005). The southern slope terrain of the channel is relatively steep and characterised by stones and a rough topography, but most of the hard substrates were sparsely colonised (transect PS57-106). The distribution patterns of stalked crinoids

and large anemones lead to the suggestion that such exposed habitats represent high-energy environments, which are unfavourable for larval settlement of suspension and tentacle feeders (Juterzenka and Soltwedel, unpubl. data.). On a larger scale, a trend of decreasing food availability and total microbial biomass with distance from the Greenland Sea continental margin (Soltwedel et al. 2005) concurs with a shift in epifaunal abundance and number of taxa on hard substrates from the east to the central channel. By contrast, evenness and species diversity did not differ between channel regions, resembling the macrofaunal community parameters described from the continental margin off Svalbard (Włodarska-Kowalczyk 2004). Overall, benthic community patterns seem to follow a bathymetric/shelf distance zonation at the Greenland Sea slope, which has also been described for megafauna between 190 and 2,800 m depth at 75°N (Mayer and Piepenburg 1996). A seasonally high export of organic particles in the MIZ and increased food availability may sustain high epifaunal densities at the continental rise and the western part of the Ardençaple Canyon (Ramseier et al. 1999; Peinert et al. 2001).

This study provides further evidence from Arctic Seas that the presence of dropstones and sunken wood lead to a niche diversification and contribute to explain high species numbers in deep-sea environments (e.g. Grassle and Maciolek 1992). To assess the effects of small-scale environmental gradients around various substrata on the diversity of benthic organisms and the temporal succession of colonisation, experimental studies are required.

Acknowledgments This work was part of the ARKTIEF II programme funded by the German Federal Ministry for Education and Research (BMBF grant 03PL030A). We thank the crew of RV *Polarstern* for their support during expeditions ARK XVII/1 and ARK XVII/1. The taxonomic help of B. Bader (Bryozoa), A. Gooday (Xenophyophorida), F. Krapp, I. Suck (Pantopoda), K. Riemann-Zürneck (Anthozoa), A. Gebruk, M. Schmid (various megafauna), and statistical advice of D. Piepenburg is gratefully acknowledged. We are indebted to three anonymous reviewers for significant improvements to an earlier draft of the manuscript. This paper is based on Miriam Dickmann's master thesis (Universität Rostock) and is publication awi-n18586 of the Alfred Wegener Institute for Polar and Marine Research.

Open Access This article is distributed under the terms of the Creative Commons Attribution Noncommercial License which permits any noncommercial use, distribution, and reproduction in any medium, provided the original author(s) and source are credited.

References

- Ambrose WG Jr, Clough LM, Tilney PR, Beer L (2001) Role of echinoderms in benthic remineralization in the Chukchi Sea. *Mar Biol* 139:937–949
- Andersen M (1971) Echinodermata from Jørgen Brønlund Fjord, North Greenland. *Meddel Grønl* 184:5–18
- Baco AR, Smith CR (2003) High species richness in deep-sea chemoautotrophic whale skeleton communities. *Mar Ecol Prog Ser* 260:109–114
- Barthel D, Tendal OS (1993) The sponge association of the abyssal Norwegian-Greenland Sea: Species composition, substrate relationships and distribution. *Sarsia* 78:83–96
- Beaulieu SE (2001) Life on glass houses: sponge stalk communities in the deep sea. *Mar Biol* 138:803–817
- Bennett BA, Smith CR, Glaser B, Maybaum HL (1994) Faunal community structure of a chemoautotrophic assemblage on whale bones in the deep northeast Pacific Ocean. *Mar Ecol Prog Ser* 108:205–223
- Bergmann M, Dannheim J, Bauerfeind E, Klages M (2009) Trophic relationships along a bathymetric gradient at the deep-sea observatory HAUSGARTEN. *Deep Sea Res I* 56:408–424
- Bluhm H (1994) Monitoring megabenthic communities in abyssal manganese nodule sites of the East Pacific Ocean in association with commercial deep-sea mining. *Aquat Conserv Mar Freshwat Ecosyst* 4:187–201
- Bluhm BA, MacDonald IR, Debenham C, Iken K (2005) Macro- and megabenthic communities in the high Arctic Canada Basin: initial findings. *Polar Biol* 28:218–231
- Bray JR, Curtis JT (1957) An ordination of the upland forest of southern Wisconsin. *Ecol Monogr* 27:225–349
- Buhl-Mortensen L, Vanreusel A, Gooday AJ, Levin LA, Priede IG, Buhl-Mortensen P, Gheerardyn H, King NJ, Raes M (2010) Biological structures as a source of habitat heterogeneity and biodiversity on the deep ocean margins. *Mar Ecol* 31:21–50
- Christiansen B, Thiel H (1992) Deep-sea epibenthic megafauna of the northeast Atlantic: abundance and biomass at three mid-oceanic locations estimated from photographic transects. In: Rowe GT, Pariente V (eds) *Deep-sea food chains and the global carbon cycle*. Kluwer, Netherlands, pp 125–138
- Clarke KR (1993) Non-parametric multivariate analyses of changes in community structure. *Austr J Ecol* 18:117–143
- Clarke KR, Warwick RM (1994) Changes in marine communities: an approach to statistical analysis and interpretation. Natural Environment Research Council, Plymouth Marine Laboratory
- Convey P, Barnes DKA, Morton A (2002) Debris accumulation on oceanic island shores of the Scotia Arc, Antarctica. *Polar Biol* 25:612–617
- Dunton HD, Schonberg S (2000) The benthic faunal assemblage of the Boulder Patch kelp community. In: Truett JC, Johnson SR (eds) *The natural history of an Arctic oil field: development and the biota*. Academic Press, San Diego, pp 371–397
- Dunton HD, Reimnitz E, Schonberg S (1982) An Arctic kelp community in the Alaskan Beaufort Sea. *Arctic* 35:465–484
- Fahrbach E et al (2002) The expedition ARKTIS XVII/1 of the research vessel POLARSTERN in 2001. *Rep Polar Mar Res* 433:1–60
- Felley JD, Vecchione M, Wilson RR Jr (2008) Small-scale distribution of deep-sea demersal nekton and other megafauna in the Charlie-Gibbs Fracture Zone of the Mid-Atlantic Ridge. *Deep Sea Res II* 55:153–160
- Fera P, Prieur D, Antoine E (1987) Experimental study on the bacterial colonization of metallic and plastic surfaces, immersed in sea water. *Mar Life* 8:1–8
- Field JG, Clarke KR, Warwick RM (1982) A practical strategy for analysing multispecies distribution patterns. *Mar Ecol Prog Ser* 8:37–52
- Gaevskaja NS (1948) *Bestimmungsbuch der Fauna und Flora der nördlichen Meere der UdSSR*, Moscow
- Galgani F, Leaute JP, Moguedet P, Souplets A, Verin Y, Carpentier A, Goraguer H, Latrouite D, Andral B, Cadiou Y, Mahe JC,

- Poulard JC, Nerisson P (2000) Litter on the sea floor along European coasts. *Mar Poll Bull* 40:516–527
- Gooday A, Shires R, Jones AR (1997) Large, deep-sea agglutinated foraminifera: two differing kinds of organization and their possible ecological significance. *J Foraminif Res* 27:278–291
- Grassle JF, Maciolek NJ (1992) Deep-sea species richness: regional and local diversity estimates from quantitative bottom samples. *Am Nat* 139:313–341
- Gutt J, Schickan T (1998) Epibiotic relationship in the Antarctic benthos. *Antarct Sci* 10:398–405
- Kidd RB, Huggett QJ (1981) Rock debris on abyssal plains in the Northeast Atlantic: a comparison of epibenthic sledge hauls and photographic surveys. *Oceanol Acta* 4:99–104
- Konar B, Iken K (2005) Competitive dominance among sessile marine organisms in a high Arctic boulder community. *Polar Biol* 29:61–64
- Krause G, Schauer U (2000) The expeditions ARKTIS XVI/1 and ARKTIS XVI/2 of the research vessel “Polarstern” in 2000. *Rep Polar Res* 389
- Kruskal JB (1977) Multidimensional scaling and other methods for discovering structure. In: Enslein K, Ralston A, Wilf HS (eds) *Statistical methods for digital computers*. Wiley, New York, pp 296–339
- Linke P (1989) Lebendbeobachtungen und Untersuchungen des Energiestoffwechsels benthischer Foraminiferen aus dem Europäischen Nordmeer. *Ber SFB* 313, Christian-Albrechts-Universität zu Kiel 18:1–123
- MacDonald IR, Bluhm BA, Iken K, Gagaev S, Strong S (2010) Benthic macrofauna and megafauna assemblages in the Arctic deep-sea Canada Basin. *Deep Sea Res II* 57:136–152
- Mayer M, Piepenburg D (1996) Epibenthic community patterns on the continental slope off East Greenland at 75°N. *Mar Ecol Prog Ser* 143:151–164
- Mullineaux LS (1987) Organisms living on manganese nodules and crusts: distribution and abundance at three North Pacific sites. *Deep Sea Res I* 34:165–184
- Mullineaux LS (1988) The role of settlement in structuring a hard-substratum community in the deep sea. *Mar Biol Ecol* 120:247–261
- Oschmann W (1990) Dropstones—rocky mini-islands in high-latitude pelagic soft substrate environments. *Senckenbergiana Marit* 21:55–75
- Peinert R, Bauerfeind E, Gradinger R, Haupt O, Krumbholz M, Peeken I, Werner I, Zeitzschel B (2001) Biogenic particle sources and vertical flux patterns in the seasonally ice-covered Greenland Sea. In: Schäfer P, Ritzrau W, Schlüter M, Thiede J (eds) *The northern North Atlantic: a changing environment*. Springer, Berlin, pp 69–79
- Pielou EC (1977) *Mathematical ecology*. Wiley, New York
- Ramseier RO, Garrity C, Bauerfeind E, Peinert R (1999) Sea-ice impact on long term particle flux in the Greenland Sea’s Is Odden-Nordbukta region during 1985–1996. *J Geophys Res* 104:5329–5343
- Ramseier RO, Garrity C, Martin T (2001) An overview of sea-ice conditions in the Greenland Sea and the relationship of oceanic sedimentation to the ice regime. In: Schäfer P, Ritzrau W, Schlüter M, Thiede J (eds) *The northern North Atlantic: a changing environment*. Springer, Berlin, pp 19–38
- Rice AL, Aldred RG, Darlington E, Wild RA (1982) The quantitative estimation of the deep-sea megabenthos; a new approach to an old problem. *Oceanol Acta* 5:63–72
- Riemann-Zürneck K (1997) The deep-sea anemones *Bathypheilia margaritacea* and *Daontesia porcupina* sp. nov. with comments on the family Bathypheiliidae. *J Mar Biol Ass UK* 77:361–374
- Schuchert P (2001) Hydroids of Greenland and Iceland (Cnidaria, Hydrozoa). *Meddel Grönl Biosci* 53:1–18
- Shannon CE, Weaver W (1949) *The mathematical theory of communication*. University of Illinois Press, Urbana
- Sokolova MN (2000) Feeding and trophic structure of the deep-sea macrobenthos. Science Publishers, Enfield
- Solan M, Germano JD, Rhoads DC, Smith C, Michaud E, Parry D, Wenzhöfer F, Kennedy B, Henriques C, Battle E, Carey D, Iocco L, Valente R, Watson J, Rosenberg R (2003) Towards a greater understanding of pattern, scale and process in marine benthic systems: a picture is worth a thousand worms. *J Exp Mar Biol Ecol* 285–286:313–338
- Soltwedel T, Hasemann C, Quéric N-V, v Juterzenka K (2005) Gradients in activity and biomass of the small benthic biota along a channel system in the deep Western Greenland Sea. *Deep Sea Res I* 52:815–835
- Soltwedel T, Jaekisch N, Ritter N, Hasemann C, Bergmann M, Klages M (2009) Bathymetric patterns of megafaunal assemblages from the arctic deep-sea observatory HAUSGARTEN. *Deep Sea Res I* 56:1856–1872
- Starmans A, Gutt J, Arntz WE (1999) Mega-epibenthic communities in Arctic and Antarctic shelf areas. *Mar Biol* 135:269–280
- Stephensen K (1943) The zoology of east Greenland: Leptostraca, Mysidacea, Cumacea, Tanaidacea, Isopoda and Euphausiacea. *Meddel Grönl* 121:82
- Stephensen K (1944) The zoology of east Greenland: Amphipoda. *Meddel Grönl* 121:165
- Syvitski JPM, Farrow GE, Atkinson RJA, Moore PG, Andrews JT (1989) Baffin Island Fjord macrobenthos: bottom communities and environmental significance. *Arctic* 42:232–247
- Thomasson MA, Tunberg BG (2005) Composition and vertical distribution of the motile epifauna on a vertical wall in Gullmarsfjorden, western Sweden, using an alternative sampling approach. *Mar Biol Res* 1:107–117
- Vinje TE (1977) Sea ice conditions in the European sector of the marginal seas of the Arctic, 1966–1975. *Norsk Polarinst Årbok* 1975:163–174
- Witte U (1995) Reproduktion, Energiestoffwechsel und Biodepositionsleistung dominanter Porifera aus der Tiefsee des Europäischen Nordmeeres. *Ber SFB* 313, Christian-Albrechts-Universität zu Kiel, 53 p
- Włodarska-Kowalczyk M (2004) Depth gradients of benthic standing stock and diversity on the continental margin at a high-latitude ice free site (of Spitsbergen, 79°N). *Deep Sea Res I* 51:1903–1914