

Erratum to: Programmed-cell-death hallmarks in incompatible pollen and papillar stigma cells of *Olea europaea* L. under free pollination

Irene Serrano · Salvatore Pelliccione ·
Adela Olmedilla

Published online: 27 April 2010
© Springer-Verlag 2010

Erratum to: Plant Cell Rep DOI 10.1007/s00299-010-0845-5

Unfortunately, the given and family name of all the authors have been interchanged in the Original paper. The names of the authors are now corrected.

Figure 5 of the original paper has been published wrongly with a shadow over it. The correct figure is displayed here.

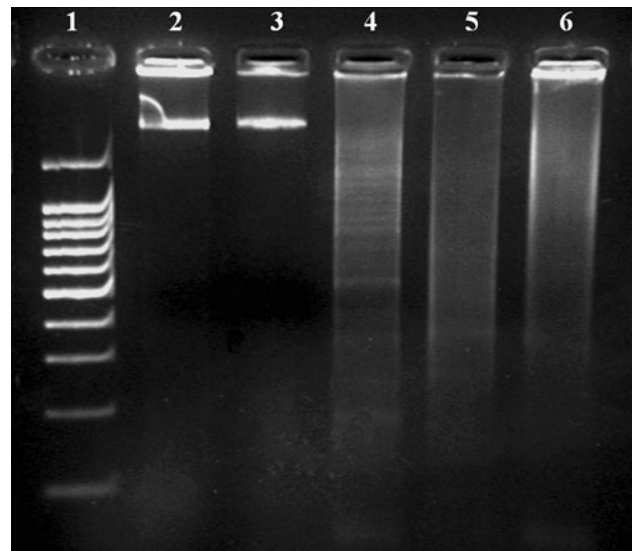


Fig. 5 Time course of DNA degradation. Lane 1 DNA marker; lanes 2 and 3 DNA from pistils excised from green flower buds and from white flower buds just before anthesis, respectively, showing no DNA degradation; lanes 4 and 5 DNA from pistils of open flowers and from flowers after petal abscission; lane 6 DNA extracted from pistils of dehiscent anthers, showing an evident DNA degradation pattern

The online version of the original article can be found under
doi:[10.1007/s00299-010-0845-5](https://doi.org/10.1007/s00299-010-0845-5).

I. Serrano · S. Pelliccione · A. Olmedilla (✉)
Department of Plant Biochemistry, Cell and Molecular Biology,
Estación Experimental del Zaidín (CSIC), c/Profesor Albareda,
1, 18008 Granada, Spain
e-mail: adela.olmedilla@eez.csic.es