

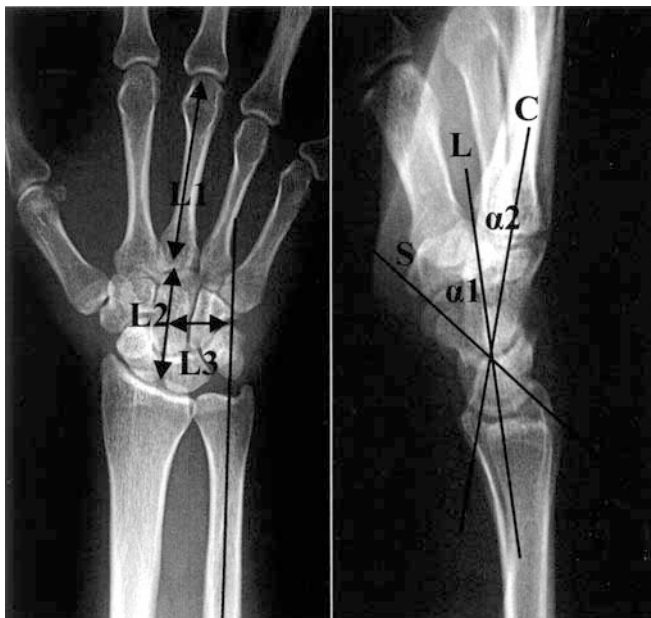
Keiichi Muramatsu · Koichiro Ihara · Hiroshi Tanaka  
Shinya Kawai

## Carpal instability in rheumatoid wrists

Published online: 14 November 2003  
© Springer-Verlag 2003

**Rheumatol Int (2003): DOI s00296-002-0276-x**

The article was published online without the two illustrations and their captions. Figures 1 and 2 and their legends are given here.



**Fig. 1** Techniques of measurements of carpal alignment. Carpal height ratio (CHR) =  $L2/L1$  ( $n = 54 \pm 3\%$ ) [4]; ulnar translocation index (UTI) =  $L3/L1$  ( $n = 30 \pm 3\%$ ) [5]; scapholunate angle (SLA) =  $\alpha1$  ( $n = 46 \pm 15^\circ$ ); capitulate angle (CLA) =  $\alpha2$  ( $n = 0 \pm 15^\circ$ ); scaphocapitate angle (SCA) =  $\alpha1 + \alpha2$  [6]



**Fig. 2** A 40-year-old woman. Right wrist radiography revealed scapholunate dissociation combined with volar intercalated segmental instability pattern

The online version of the original article can be found at <http://dx.doi.org/10.1007/s00296-002-0276-x>

K. Muramatsu (✉) · K. Ihara · H. Tanaka · S. Kawai  
Department of Orthopedic Surgery and Rheumatology,  
Yamaguchi University School of Medicine,  
1-1-1 Minami-Kogushi, Ube, 755-8505 Yamaguchi, Japan  
E-mail: muramatu@po.cc.yamaguchi-u.ac.jp  
Tel.: +81-836-222268  
Fax: +81-836-222267