

# Safety and tolerability of the olaparib tablet formulation in Japanese patients with advanced solid tumours

Kan Yonemori<sup>1</sup> · Kenji Tamura<sup>1</sup> · Makoto Kodaira<sup>1</sup> · Koshi Fujikawa<sup>2</sup> · Tamotsu Sagawa<sup>2</sup> · Taito Esaki<sup>3</sup> · Tsuyoshi Shirakawa<sup>3</sup> · Fumihiko Hirai<sup>4</sup> · Yuki Yokoi<sup>5</sup> · Toshio Kawata<sup>5</sup> · Ben Hatano<sup>5</sup> · Yasuo Takahashi<sup>2</sup>

Received: 23 June 2016 / Accepted: 8 July 2016 / Published online: 15 July 2016  
© The Author(s) 2016. This article is published with open access at Springerlink.com

## Abstract

**Purpose** This was the first Phase I study to assess the safety and tolerability of the tablet formulation of olaparib (Lynparza™), an oral poly(ADP-ribose) polymerase inhibitor, in Japanese patients with advanced solid tumours. The pharmacokinetic profile and antitumour activity of olaparib tablets were also assessed.

**Methods** In this open-label, multicentre study (D081BC00001; NCT01813474), a single dose of olaparib (200 or 300 mg, tablets) was administered on day 1, followed 48 h afterwards by multiple dosing (200 or 300 mg twice daily [bid]) for 28-day cycles. Doses were escalated in successive cohorts, with an expansion cohort enrolled at the highest dose that was confirmed to be tolerable during dose escalation.

**Results** Twenty-eight patients were enrolled and 23 were treated ( $n = 4, 7$  and  $12$  at 200, 300 and 300 [expansion] mg bid, respectively). No patients experienced a dose-limiting toxicity, so the maximum tolerated dose was not defined. The most frequent adverse events were nausea

(43.5 %), decreased appetite (30.4 %), anaemia (26.1 %) and constipation (26.1 %). No patient had dose reductions, two had dose interruptions, and two discontinued treatment because of adverse events. Absorption of olaparib was rapid following single and multiple dosing, and plasma concentrations declined biphasically after single dosing. No patients had a confirmed antitumour response.

**Conclusions** Olaparib tablet doses of 200 and 300 mg bid were considered tolerable in Japanese patients with advanced solid tumours. Consistent with the global olaparib programme, 300 mg bid was selected as the recommended tablet dose for future studies.

**Clinical trial registration number** NCT01813474.

**Keywords** Olaparib · Poly(ADP-ribose) polymerase inhibitors · Clinical trial, Phase I · Safety · Solid tumours

## Introduction

Olaparib (Lynparza™) is an oral inhibitor of poly(ADP-ribose) polymerase (PARP) that, amongst other effects, blocks base-excision repair by trapping PARP at sites of DNA damage, leading to the collapse of DNA replication forks and the accumulation of DNA double-strand breaks [1]. PARP inhibition induces synthetic lethality in tumour cells that are deficient in pathways involved in the repair of DNA double-stranded breaks by homologous recombination repair, such as cells with *BRCA1/2* mutations [2, 3].

A Phase I monotherapy study established the maximum tolerated dose (MTD) of olaparib capsules as 400 mg twice daily (bid) [4]. Subsequent Phase II monotherapy studies have shown that olaparib is generally well tolerated at 400 mg bid, and antitumour activity has been consistently observed with this dose in patients with and without

✉ Kan Yonemori  
kyonemor@ncc.go.jp

<sup>1</sup> Department of Breast and Medical Oncology, National Cancer Center Hospital, 5-1-1 Tsukiji, Chuo-ku, Tokyo 104-0045, Japan

<sup>2</sup> Department of Gastroenterology, National Hospital Organization Hokkaido Cancer Center, Hokkaido, Japan

<sup>3</sup> Department of Gastrointestinal and Medical Oncology, National Hospital Organization Kyushu Cancer Center, Fukuoka, Japan

<sup>4</sup> Department of Thoracic Oncology, National Hospital Organization Kyushu Cancer Center, Fukuoka, Japan

<sup>5</sup> AstraZeneca R and D, Osaka, Japan

*BRCA1/2* mutations [5–8]. In patients with platinum-sensitive recurrent serous ovarian cancer, olaparib maintenance monotherapy significantly prolonged progression-free survival compared with placebo (hazard ratio [HR] 0.35, 95 % confidence interval [CI] 0.25–0.49,  $P < 0.001$ ), and those with a *BRCA1/2* mutation were most likely to benefit from treatment (HR 0.18, 95 % CI 0.10–0.31,  $P < 0.0001$ ) [9, 10]. The olaparib capsule formulation has received approvals at the 400 mg bid dose in the EU and US for the treatment of ovarian cancer.

Patients must take  $16 \times 50$  mg capsules per day to reach the olaparib MTD, a ‘pill burden’ that may compromise patient convenience and compliance. This drove the development of a tablet formulation, designed to reduce the dose units required. However, as the tablet and capsule formulations are not bioequivalent, a simple formulation switch was not possible. Instead, a dose-finding study was conducted in Western patients with advanced solid tumours, which concluded that a 300 mg bid tablet dose ( $4 \times 150$  mg tablets per day) best matched the 400 mg bid capsule dose in terms of tolerability and efficacy [11]. This tablet dose is now being used in Phase III olaparib monotherapy studies.

However, there are currently no data for olaparib tablets in Japanese patients. Furthermore, in Western patients, exposure at the recommended 300 mg bid tablet dose exceeds that previously experienced by Japanese patients at the 400 mg bid capsule dose [11, 12]. Therefore, this Phase I study was conducted to assess the safety and tolerability of the olaparib tablet formulation in Japanese patients with advanced solid tumours.

## Patients and methods

### Patients

Eligible Japanese patients were aged  $\geq 20$  years, with advanced solid tumours that were refractory to standard

therapies or had no available standard treatments; had Eastern Cooperative Oncology Group (ECOG) performance status 0–1; and had adequate organ and bone marrow function and a life expectancy of  $\geq 16$  weeks. *BRCA1/2* mutation status was not assessed or used as an eligibility criterion.

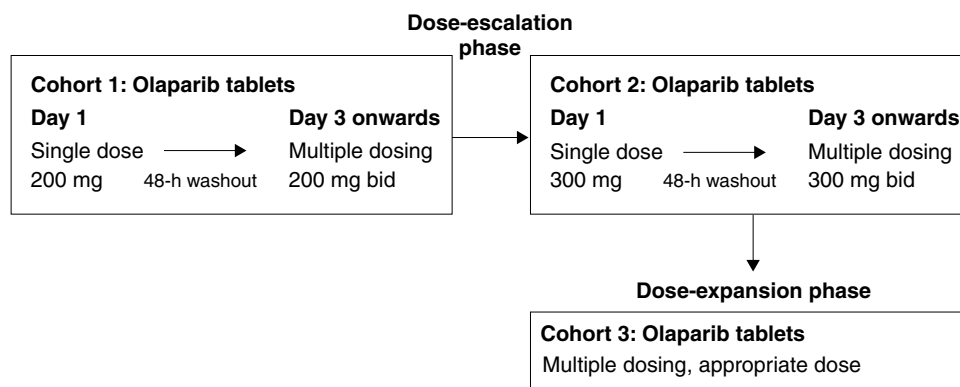
All patients provided informed consent. The study was conducted in accordance with Good Clinical Practice, the Declaration of Helsinki and the AstraZeneca Policy on Bioethics [13].

### Study design and treatment

This was a Phase I, open-label study (D081BC00001; NCT01813474) conducted across three Japanese centres. A dose-escalation scheme was used, with monitoring of safety and tolerability at each dose. The treatment regimen consisted of a single dose on day 1, followed by a 48-h washout and then continuous dosing for 28-day cycles (Fig. 1). A ‘rolling six’ cohort design was used, with 3–6 patients per cohort. The starting dose (cohort 1) was 200 mg bid and, if this was considered tolerable, the dose was escalated to 300 mg bid (cohort 2). A dose was considered non-tolerable if two out of six patients in the cohort experienced a dose-limiting toxicity (DLT). If the dose in cohort 2 was not tolerable, an intermediate dose between 200 and 300 mg bid could be investigated to identify the MTD. A dose-expansion phase was planned with a cohort of 12 additional patients for the highest dose that was confirmed to be tolerable during dose escalation. Doses of  $\geq 400$  mg bid were not investigated as, in Western patients, a tablet dose of  $\geq 400$  mg bid was not considered suitable for Phase III trials [11].

The primary objective was to investigate the safety and tolerability of escalating doses of the olaparib tablet formulation in Japanese patients with advanced solid tumours. Secondary objectives were to characterise the pharmacokinetic (PK) profile of olaparib tablets after single dosing and

**Fig. 1** Phase I study design with dose-escalation and dose-expansion phases



at steady state after bid dosing and to potentially establish the MTD. Antitumour activity was assessed as an exploratory objective.

### Assessments

Safety and tolerability were assessed by recording adverse events (AEs), physical examination, vital signs, electrocardiogram changes and laboratory findings. AEs were graded using the National Cancer Institute's Common Terminology Criteria for Adverse Events (NCI CTCAE) v4.0 and were summarised from the first dose to within 30 days after discontinuation. A DLT was defined as any of the following events occurring during the first treatment cycle and determined by the investigator to be related to olaparib, irrespective of whether the event was resolved: absolute neutrophil count (ANC)  $< 0.5 \times 10^9/L$  for  $>5$  days; ANC  $< 0.5 \times 10^9/L$  with neutropenic fever or sepsis; platelet count  $< 25 \times 10^9/L$ ;  $\geq 2$ -week treatment interruption because of grade  $\geq 2$  anaemia and/or blood transfusion (in patients not requiring transfusion in the month before registration); non-haematological grade 3/4 toxicities (except fatigue, nausea, vomiting, diarrhoea, myalgia or arthralgia, unless prophylactic or therapeutic measures were administered for these); grade 2 cardiac or neurological toxicity; toxicity leading to treatment discontinuation in cycle 1; or any other toxicity judged by the investigator to be a DLT.

During the dose-escalation phase, blood samples for PK analysis were obtained before the single dose, at pre-defined intervals until 48 h after the single dose, before the morning dose on day 15 of the multiple-dosing period and at pre-defined intervals until 12 h after this dose. PK parameters derived following single dosing included maximal plasma concentration ( $C_{max}$ ), time to  $C_{max}$  ( $t_{max}$ ), terminal half-life ( $t_{1/2\lambda_z}$ ), area under the concentration–time curve (AUC), AUC from 0 to 12 h ( $AUC_{0-12}$ ), apparent plasma clearance (CL/F) and apparent volume of distribution ( $V_z/F$ ). Parameters derived following multiple dosing included  $C_{max}$  at steady state ( $C_{ss, max}$ ), time to  $C_{ss, max}$  ( $t_{ss, max}$ ), minimum plasma concentration at steady state ( $C_{ss, min}$ ) and AUC at steady state ( $AUC_{ss}$ ).

Tumour response was assessed by computed tomography or magnetic resonance imaging every 8 weeks until disease progression and graded using Response Evaluation Criteria in Solid Tumors (RECIST) v1.1.

### Statistical analyses

Safety data were summarised descriptively for the safety analysis set, which included all patients who received at least one dose of olaparib.

The PK analysis set included all patients from the dose-escalation phase who received at least one olaparib dose and had any evaluable post-dose PK data. PK parameters were derived using non-compartmental methods.

The efficacy analysis set included all patients who received at least one dose and had measurable baseline disease.

## Results

### Patient characteristics

Twenty-eight patients were enrolled (between 25 March and 31 October 2013) and 23 received treatment ( $n = 4, 7$  and  $12$  in cohorts 1 [200 mg bid], 2 [300 mg bid] and 3 [300 mg bid expansion], respectively). Two patients were not eligible, two decided not to receive treatment and one withdrew from the study to undergo treatment for brain metastasis. Patient baseline demographics and characteristics (Table 1) were considered representative of the general study population. Disease classification included locally advanced and metastatic tumours and the median number of prior chemotherapy regimens was three (range 0–9). One patient did not have measurable baseline disease, so 22 patients were analysed for efficacy. All 11 patients from the dose-escalation phase (cohorts 1 and 2) were included in the PK analysis set.

### Safety and tolerability

#### Exposure

The median (range) total treatment duration (including the 48-h washout and dose interruptions) was 72 (6–492), 30 (11–113) and 56 (39–289) days in cohorts 1, 2 and 3, respectively. The median (range) relative dose intensities were 97.1 % (88.9–100.0 %), 99.1 % (94.7–100.0 %) and 98.8 % (65.6–100.0 %) in cohorts 1, 2 and 3, respectively. After the data cut-off for the primary analysis (31 July 2014), two patients (cohort 1,  $n = 1$ ; cohort 3,  $n = 1$ ) continued to receive olaparib and 21 patients had discontinued treatment. Eighteen patients discontinued as a result of worsening of underlying disease, two discontinued because of AEs and one decided to withdraw from the study.

#### Dose-limiting toxicities

No patients in this study experienced a DLT. The 300 mg bid dose was therefore considered tolerable and chosen for the expansion cohort. As doses exceeding 300 mg bid were not assessed, the MTD in Japanese patients was not established.

**Table 1** Patient demographics and baseline characteristics

	Cohort 1 200 mg bid (n = 4)	Cohort 2 300 mg bid (n = 7)	Cohort 3 300 mg bid (n = 12)	Total (n = 23)
Median age, years (range)	38.0 (37–55)	61.0 (44–64)	56.5 (34–77)	55.0 (34–77)
<i>Sex, n (%)</i>				
Male	0 (0.0)	3 (42.9)	5 (41.7)	8 (34.8)
Female	4 (100.0)	4 (57.1)	7 (58.3)	15 (65.2)
<i>ECOG performance status, n (%)</i>				
0	3 (75.0)	5 (71.4)	10 (83.3)	18 (78.3)
1	1 (25.0)	2 (28.6)	2 (16.7)	5 (21.7)
<i>Primary tumour location, n (%)</i>				
Breast	1 (25.0)	1 (14.3)	3 (25.0)	5 (21.7)
Ovarian	0 (0.0)	2 (28.6)	2 (16.7)	4 (17.4)
Lung	0 (0.0)	1 (14.3)	2 (16.7)	3 (13.0)
Other <sup>a</sup>	3 (75.0)	3 (42.9)	5 (41.7)	11 (47.8)
<i>Previous chemotherapy regimens, n (%)</i>				
0	1 (25.0)	0 (0.0)	1 (8.3)	2 (8.7)
1	1 (25.0)	2 (28.6)	1 (8.3)	4 (17.4)
2	0 (0.0)	1 (14.3)	1 (8.3)	2 (8.7)
3	0 (0.0)	1 (14.3)	6 (50.0)	7 (30.4)
>3	2 (50.0)	3 (42.9)	3 (25.0)	8 (34.8)

<sup>a</sup> Cohort 1: cervix (n = 2), uterus (n = 1); cohort 2: pancreas (n = 1), uterus (n = 1), retroperitoneum (n = 1); cohort 3: colon (n = 1), colorectal (n = 1), gastric antrum (n = 1), peritoneum (n = 1), primary location unknown (n = 1)

**Table 2** AEs of all grades occurring in >25 % of patients and AEs of grade  $\geq 3$  occurring in >10 % of patients, for each cohort

	Cohort 1 200 mg bid (n = 4)		Cohort 2 300 mg bid (n = 7)		Cohort 3 300 mg bid (n = 12)	
	All grades n (%)	Grade $\geq 3$ n (%)	All grades n (%)	Grade $\geq 3$ n (%)	All grades n (%)	Grade $\geq 3$ n (%)
Any AE	4 (100.0)	1 (25.0)	7 (100.0)	3 (42.9)	10 (83.3)	1 (8.3)
Nausea	1 (25.0)	0 (0.0)	6 (85.7)	0 (0.0)	3 (25.0)	0 (0.0)
Anaemia	0 (0.0)	0 (0.0)	4 (57.1)	1 (14.3)	2 (16.7)	0 (0.0)
Decreased appetite	0 (0.0)	0 (0.0)	4 (57.1)	0 (0.0)	3 (25.0)	0 (0.0)
Decreased white blood cell count	0 (0.0)	0 (0.0)	3 (42.9)	2 (28.6)	2 (16.7)	1 (8.3)
Constipation	0 (0.0)	0 (0.0)	2 (28.6)	0 (0.0)	4 (33.3)	0 (0.0)
Diarrhoea	0 (0.0)	0 (0.0)	2 (28.6)	0 (0.0)	2 (16.7)	0 (0.0)
Dyspepsia	0 (0.0)	0 (0.0)	2 (28.6)	0 (0.0)	1 (8.3)	0 (0.0)
Proteinuria	0 (0.0)	0 (0.0)	2 (28.6)	0 (0.0)	0 (0.0)	0 (0.0)
Malaise	0 (0.0)	0 (0.0)	2 (28.6)	0 (0.0)	2 (16.7)	0 (0.0)
Decreased neutrophil count	0 (0.0)	0 (0.0)	2 (28.6)	2 (28.6)	2 (16.7)	1 (8.3)
Ileus	1 (25.0)	1 (25.0)	0 (0.0)	0 (0.0)	0 (0.0)	0 (0.0)
Pyelonephritis	1 (25.0)	1 (25.0)	0 (0.0)	0 (0.0)	0 (0.0)	0 (0.0)
Decreased lymphocyte count	0 (0.0)	0 (0.0)	1 (14.3)	1 (14.3)	0 (0.0)	0 (0.0)

### Adverse events

Of the 23 patients who received olaparib, 21 experienced at least one AE (Table 2). The most frequent AEs were

nausea (43.5 %), decreased appetite (30.4 %), anaemia (26.1 %) and constipation (26.1 %), all of which occurred more frequently at 300 than at 200 mg bid. No new types of AE were reported in the 300 mg bid expansion cohort.

**Table 3** Pharmacokinetic parameters for the tablet formulation of olaparib following single and multiple dosing for 15 days

PK parameters	Olaparib dose	
	Single dosing	
	Cohort 1 200 mg bid ( <i>n</i> = 4)	Cohort 2 300 mg bid ( <i>n</i> = 7)
$C_{\max}$ , $\mu\text{g/mL}$	6.70 (95.69)	7.74 (34.76)
Median $t_{\max}$ , h (range)	2.00 (1.00–3.00)	1.98 (1.00–3.00)
$\text{AUC}_{0-12}$ , $\mu\text{g h/mL}$	34.64 (159.7)	33.69 (34.52)
AUC, $\mu\text{g h/mL}$	61.97 (473.4) <sup>a</sup>	46.21 (64.64)
Mean $t_{1/2\lambda_z}$ , h (range)	13.24 (8.92–18.6) <sup>a</sup>	9.43 (6.45–14.7)
Mean CL/F, L/h (range)	6.38 (0.432–12.4) <sup>a</sup>	7.40 (2.29–13.3)
Mean $V_z/F$ , L (range)	93.96 (11.6–160) <sup>a</sup>	91.87 (47.8–151)
	Multiple dosing	
	Cohort 1 200 mg bid ( <i>n</i> = 3)	Cohort 2 300 mg bid ( <i>n</i> = 6)
$C_{\text{ss, max}}$ , $\mu\text{g/mL}$	7.67 (46.93)	8.43 (35.05)
$C_{\text{ss, min}}$ , $\mu\text{g/mL}$	0.61 (157.0)	1.29 (157.6)
Median $t_{\text{ss, max}}$ , h (range)	1.50 (1.00–3.00)	3.00 (1.50–3.93)
$\text{AUC}_{\text{ss}}$ , $\mu\text{g}\cdot\text{h/mL}$	36.50 (71.94)	52.34 (68.17)

All values are given as geometric mean (CV %) unless otherwise stated  
CV coefficient of variation

<sup>a</sup> It was not possible to calculate  $t_{1/2\lambda_z}$ , AUC, CL/F or  $V_z/F$  in one patient, therefore *n* = 3

Eighteen patients experienced at least one AE that was considered causally related to olaparib by the investigator; the most common causally related AEs were nausea (34.8 %), decreased appetite (30.4 %) and anaemia (21.7 %). Decreased white blood cell or neutrophil count (both 13.0 %) were the most common grade  $\geq 3$  AEs. Three patients (42.9 %) from cohort 2 experienced grade  $\geq 3$  AEs that were considered causally related to olaparib (decreased white blood cell count, decreased neutrophil count and decreased lymphocyte count [*n* = 1]; anaemia [*n* = 1]; decreased white blood cell count and decreased neutrophil count [*n* = 1]).

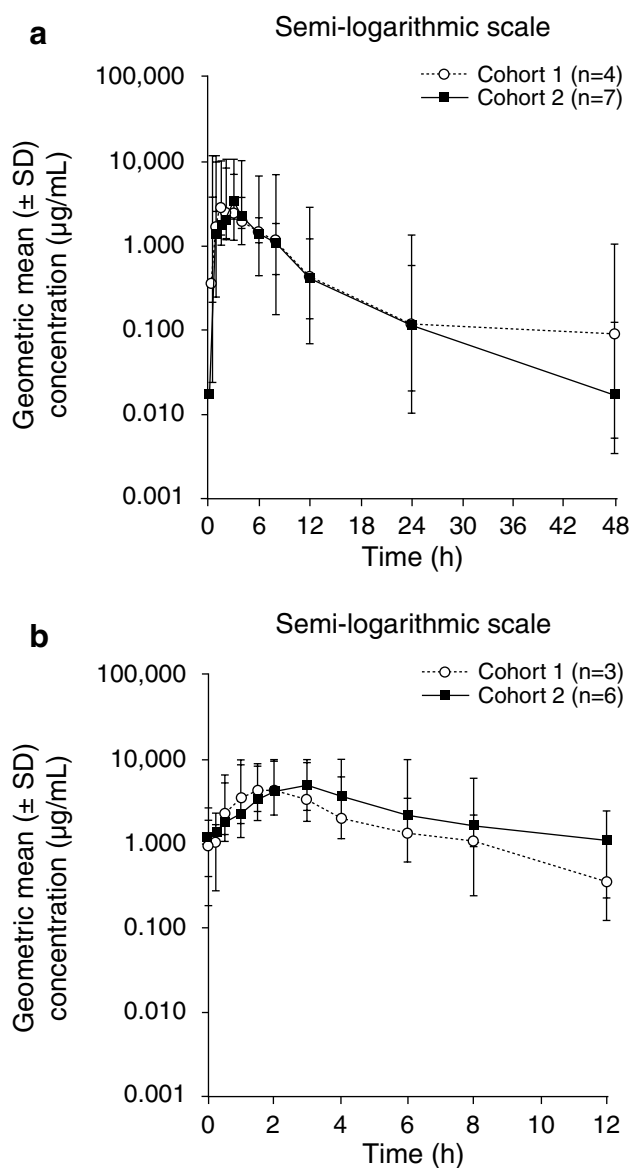
Two patients had dose interruptions because of AEs (decreased platelet count in one patient [cohort 2]; pneumonia in one patient [cohort 3]) and two patients discontinued treatment because of AEs. One patient (cohort 2) discontinued because of decreased neutrophil and white blood cell counts, which were considered to be causally related to olaparib. One patient (cohort 1) discontinued because of a serious AE (SAE) of ileus, which was not considered to be related to olaparib and was the only SAE reported. No patients had dose reductions caused by AEs. There were no AE-related deaths; one patient (cohort 3) died as a result of worsening of their condition.

There were no clinically relevant treatment-related changes in vital signs, electrocardiogram parameters,

physical observations or laboratory variables reported, although mild myelosuppressive effect and mild renal impairment were observed in one patient.

### Pharmacokinetics

Pharmacokinetic data were collected after single dosing for all 11 patients in the PK analysis set and after multiple dosing for nine patients (*n* = 3 in cohort 1; *n* = 6 in cohort 2). PK parameters are summarised in Table 3. Plasma-concentration–time profiles for single and multiple dosing are shown in Fig. 2; profiles were similar for the 200 and 300 mg bid doses. After single dosing, absorption of olaparib was rapid in both cohorts, with a median  $t_{\max}$  of 2 h at 200 and 300 mg bid and a range of 1.0–3.0 h across cohorts. Plasma concentrations declined biphasically after the peak, with a mean  $t_{1/2\lambda_z}$  of 13.2 and 9.4 h at 200 and 300 mg bid, respectively, and a range of 6.5–18.6 h across cohorts. After multiple dosing, absorption was also rapid, with a median  $t_{\text{ss, max}}$  of 1.5 and 3.0 h at 200 and 300 mg bid, respectively, and a range of 1.0–3.9 h across cohorts. For both doses, median  $t_{\max}$  did not differ significantly after multiple dosing compared with single dosing. Owing to a limited number of sampling points,  $t_{1/2\lambda_z}$  could not be adequately determined from the multiple-dosing profiles.



**Fig. 2** Plasma concentrations of olaparib following **a** single and **b** multiple dosing. *SD* standard deviation

Dose-normalised plasma exposures ( $C_{\max}$  and AUC) were generally comparable between the 200 and 300 mg bid cohorts after single and multiple dosing. The exception was one patient (cohort 1) who showed significantly higher exposures after single dosing compared with the other patients; this patient withdrew from the study because of an AE (SAE of ileus) and was not included in the multiple-dosing analyses.

#### Antitumour activity

Of the 22 patients analysed for efficacy, none had a confirmed complete or partial response. One patient in cohort

3 had an unconfirmed partial response at the first RECIST assessment; this patient had progressive disease (owing to the development of a new lesion) at the second RECIST evaluation. Overall, one (25.0 %), two (33.3 %) and four (33.3 %) patients in cohorts 1, 2 and 3, respectively, had stable disease for  $\geq 8$  weeks. Two (50.0 %), four (66.7 %) and eight (66.7 %) patients in cohorts 1, 2 and 3, respectively, had progressive disease. One patient (cohort 1) was not evaluable because of incomplete post-baseline assessments.

#### Discussion

This was the first study to evaluate the safety and tolerability of the olaparib tablet formulation in Japanese patients. A Phase I dose-finding study has previously evaluated the olaparib capsule formulation in 12 Japanese patients with advanced solid tumours [12]. No DLTs were reported at an olaparib tablet dose of 200 or 300 mg bid, consistent with the previous observation of no DLTs at capsule doses up to and including 400 mg bid [12]. The 300 mg bid tablet dose was therefore considered tolerable and the MTD was not established, as higher doses were not investigated. AEs reported in this study were consistent with data for the tablet formulation in Western patients and with the known safety profile of the capsule formulation [4–7, 9, 11]. The most frequent AEs were nausea, decreased appetite, anaemia and constipation. No new AEs were observed in the 300 mg bid expansion cohort, and no new safety concerns were identified. AEs resulted in dose interruptions in two patients and treatment discontinuation in two patients; no patients required dose reductions because of AEs. The only SAE reported was by a patient with ileus of CTCAE grade 3, not considered causally related to olaparib, which resulted in treatment discontinuation. This patient showed significantly higher exposure to olaparib than other patients. Although the reason for this is unclear, it is possible that ileus may have affected olaparib absorption in this patient.

Absorption of olaparib was rapid following single and multiple dosing, with  $C_{\max}$  reached by 1.00–3.93 h. The single-dosing profiles showed biphasic elimination, with a  $t_{1/2\lambda_z}$  of 6.45–18.6 h. The plasma-concentration–time profiles in this study were similar to those observed for the capsule formulation in Japanese patients and for the tablet formulation in Western patients [11, 12]. Following single and multiple dosing, exposure ( $C_{\max}$ , AUC) was similar to that for the tablet formulation in Western patients and exceeded reported exposure for the 400 mg bid capsule dose [11].

Objective responses were not seen in any patients. *BRCA* mutations were not evaluated in this study; therefore, future

studies could investigate the efficacy of olaparib tablets in Japanese patients of known *BRCA* status.

In conclusion, the olaparib tablet formulation was tolerable in Japanese patients with advanced solid tumours and a dose of 300 mg bid is recommended for further evaluation. This is consistent with the tablet dose used in ongoing Phase III trials, such as GOLD (D081BC00004; NCT01924533), which will evaluate olaparib plus paclitaxel in Asian patients with advanced gastric cancer.

**Acknowledgments** This study was sponsored by AstraZeneca. We thank Rachel Patel, from Mudskipper Business Ltd, who provided medical writing assistance funded by AstraZeneca.

### Compliance with ethical standards

**Conflict of interest** Kan Yonemori reports grants from AstraZeneca during the conduct of the study and personal fees from Eisai Co., Ltd, outside the submitted work. Kenji Tamura, Makoto Kodaira, Koshi Fujikawa, and Tamotsu Sagawa report personal fees from AstraZeneca during the conduct of the study. Taito Esaki reports grants from AstraZeneca during the conduct of the study, and outside of the submitted work: grants and personal fees from Boehringer Ingelheim, Eli Lilly, Merck Serono, and Taiho Pharmaceutical Co. Ltd; grants from Astellas, AstraZeneca, Bayer, Daiichi Sankyo, MSD, Novartis Pharma, Ono Pharmaceutical Co. Ltd, Sanofi, and Sumitomo Dainippon; and personal fees from Chugai and Yakult. Tsuyoshi Shirakawa reports personal fees from AstraZeneca during the conduct of the study. Fumihiko Hirai reports grants from AstraZeneca during the conduct of the study, and outside of the submitted work: grants and personal fees from Novartis Pharma; personal fees from Chugai Pharmaceutical Co., Ltd, Eli Lilly, Kyowa Hakko Kirin Co., Ltd, Ono Pharmaceutical Co., Ltd, and Taiho Pharmaceutical Co., Ltd. Yuki Yokoi, Toshio Kawata, Ben Hatano and Yasuo Takahashi report personal fees from AstraZeneca during the conduct of the study.

**Open Access** This article is distributed under the terms of the Creative Commons Attribution 4.0 International License (<http://creativecommons.org/licenses/by/4.0/>), which permits unrestricted use, distribution, and reproduction in any medium, provided you give appropriate credit to the original author(s) and the source, provide a link to the Creative Commons license, and indicate if changes were made.

### References

- Murai J, Huang SY, Das BB, Renaud A, Zhang Y, Doroshow JH, Ji J, Takeda S, Pommier Y (2012) Trapping of PARP1 and PARP2 by clinical PARP inhibitors. *Cancer Res* 72:5588–5599
- Evers B, Drost R, Schut E, de Bruin M, van der Burg E, Derksen PW, Holstege H, Liu X, van Drunen E, Beverloo HB, Smith GC, Martin NM, Lau A, O'Connor MJ, Jonkers J (2008) Selective inhibition of BRCA2-deficient mammary tumor cell growth by AZD2281 and cisplatin. *Clin Cancer Res* 14:3916–3925
- Rottenberg S, Jaspers JE, Kersbergen A, van der Burg E, Nygren AO, Zander SA, Derksen PW, de Bruin M, Zevenhoven J, Lau A, Boulter R, Cranston A, O'Connor MJ, Martin NM, Borst P, Jonkers J (2008) High sensitivity of BRCA1-deficient mammary tumors to the PARP inhibitor AZD2281 alone and in combination with platinum drugs. *Proc Natl Acad Sci USA* 105:17079–17084
- Fong PC, Boss DS, Yap TA, Tutt A, Wu P, Mergui-Roelvink M, Mortimer P, Swaisland H, Lau A, O'Connor MJ, Ashworth A, Carmichael J, Kaye SB, Schellens JHM, de Bono JS (2009) Inhibition of poly(ADP-ribose) polymerase in tumors from BRCA mutation carriers. *N Engl J Med* 361:123–134
- Audeh MW, Carmichael J, Penson RT, Friedlander M, Powell B, Bell-McGuinn KM, Scott C, Weitzel JN, Oaknin A, Loman N, Lu K, Schmutzler RK, Matulonis U, Wickens M, Tutt A (2010) Oral poly(ADP-ribose) polymerase inhibitor olaparib in patients with *BRCA1* or *BRCA2* mutations and recurrent ovarian cancer: a proof-of-concept trial. *Lancet* 376:245–251
- Tutt A, Robson M, Garber JE, Domchek SM, Audeh MW, Weitzel JN, Friedlander M, Arun B, Loman N, Schmutzler RK, Wardley A, Mitchell G, Earl H, Wickens M, Carmichael J (2010) Oral poly(ADP-ribose) polymerase inhibitor olaparib in patients with *BRCA1* or *BRCA2* mutations and advanced breast cancer: a proof-of-concept trial. *Lancet* 376:235–244
- Gelmon KA, Tischkowitz M, Mackay H, Swenerton K, Robidoux A, Tonkin K, Hirte H, Huntsman D, Clemons M, Gilks B, Yerushalmi R, MacPherson E, Carmichael J, Oza A (2011) Olaparib in patients with recurrent high-grade serous or poorly differentiated ovarian carcinoma or triple-negative breast cancer: a phase 2, multicentre, open-label, non-randomised study. *Lancet Oncol* 12:852–861
- Kaye SB, Lubinski J, Matulonis U, Ang JE, Gourley C, Karlan BY, Amnon A, Bell-McGuinn KM, Chen LM, Friedlander M, Safra T, Vergote I, Wickens M, Lowe ES, Carmichael J, Kaufman B (2012) Phase II, open-label, randomized, multicenter study comparing the efficacy and safety of olaparib, a poly(ADP-ribose) polymerase inhibitor, and pegylated liposomal doxorubicin in patients with BRCA1 or BRCA2 mutations and recurrent ovarian cancer. *J Clin Oncol* 30:372–379
- Ledermann J, Harter P, Gourley C, Friedlander M, Vergote I, Rustin G, Scott C, Meier W, Shapira-Frommer R, Safra T, Matei D, MacPherson E, Watkins C, Carmichael J, Matulonis U (2012) Olaparib maintenance therapy in platinum-sensitive relapsed ovarian cancer. *N Engl J Med* 366:1382–1392
- Ledermann J, Harter P, Gourley C, Friedlander M, Vergote I, Rustin G, Scott CL, Meier W, Shapira-Frommer R, Safra T, Matei D, Fielding A, Spencer S, Dougherty B, Orr M, Hodgson D, Barrett JC, Matulonis U (2014) Olaparib maintenance therapy in patients with platinum-sensitive relapsed serous ovarian cancer: a preplanned retrospective analysis of outcomes by BRCA status in a randomised phase 2 trial. *Lancet Oncol* 15:852–861
- Mateo J, Friedlander M, Sessa C, Leunen K, Nicum S, Gourley C, Fielding A, Bowen K, Kaye S, Molife LR (2013) Administration of continuous/intermittent olaparib in ovarian cancer patients with a germline *BRCA1/2* mutation to determine an optimal dosing schedule for the tablet formulation. *Eur J Cancer* 49(2 Suppl):801
- Yamamoto N, Nokihara H, Yamada Y, Goto Y, Tanioka M, Shibata T, Yamada K, Asahina H, Kawata T, Shi X, Tamura T (2012) A phase I, dose-finding and pharmacokinetic study of olaparib (AZD2281) in Japanese patients with advanced solid tumors. *Cancer Sci* 103:504–509
- AstraZeneca (2015) Global policy: bioethics. <http://www.astrazeneca.com/Responsibility/Code-policies-standards/Our-global-policies>