



Correction to: Transcriptome of CD8⁺ tumor-infiltrating T cells: a link between diabetes and colorectal cancer

Reem Saleh¹ · Varun Sasidharan Nair¹ · Khaled Murshed² · Mohamed Abu Nada³ · Eyad Elkord⁴ ·
Ranad Shaheen⁵

Published online: 12 March 2021
© Springer-Verlag GmbH Germany, part of Springer Nature 2021

Correction to: Cancer Immunology, Immunotherapy
<https://doi.org/10.1007/s00262-021-02879-7>

The original version of this article unfortunately contained a mistake. The gene names on Fig. 3C in the proofs were missing.

The corrected Fig. 3 is given in the following page.

The original article has been corrected.

Publisher's Note Springer Nature remains neutral with regard to jurisdictional claims in published maps and institutional affiliations.

The original article can be found online at <https://doi.org/10.1007/s00262-021-02879-7>.

✉ Eyad Elkord
e.elkord@salford.ac.uk

✉ Ranad Shaheen
ranad_shaheen@hotmail.com

¹ Cancer Research Center, Qatar Biomedical Research Institute (QBRI), Hamad Bin Khalifa University (HBKU), Qatar Foundation (QF), Doha, Qatar

² Department of Pathology, Hamad Medical Corporation, Doha, Qatar

³ Department of Surgery, Hamad Medical Corporation, Doha, Qatar

⁴ Biomedical Research Center, School of Environment and Life Sciences, Engineering and Environment, University of Salford, Manchester M5 4WT, UK

⁵ Qatar Biomedical Research Institute (QBRI), Hamad Bin Khalifa University (HBKU), Qatar Foundation (QF), P.O. Box: 34110, Doha, Qatar

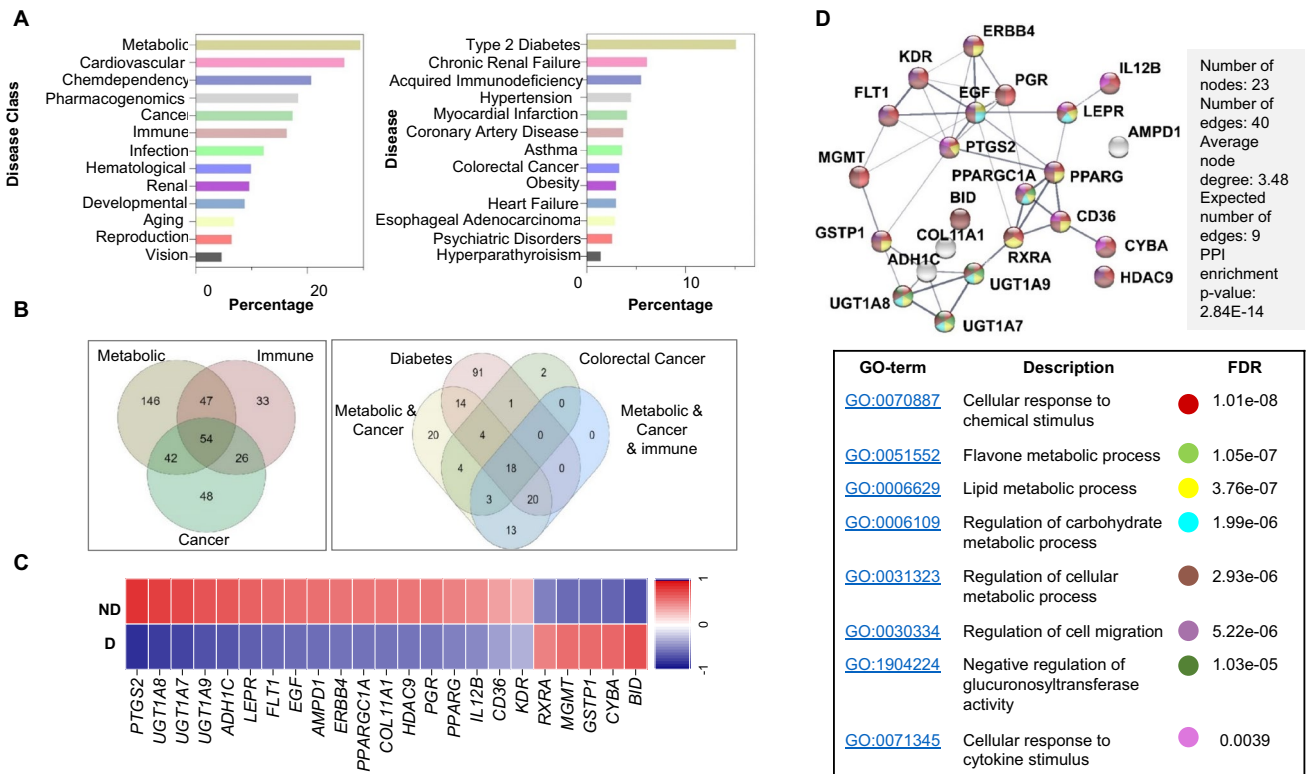


Fig. 3 Functional gene enrichment analysis of differentially expressed genes in CD8⁺ TILs in CRC diabetic versus nondiabetic patients. Differentially expressed genes (up/downregulated) between CRC diabetic and nondiabetic patients were imported into DAVID platform for functional annotations. Bar plots for gene annotations based on GAD disease class and disease terms **a**. Venn diagrams for the significantly upregulated and downregulated genes in CD8⁺ TILs from

CRC diabetic patients shared within different disease classes and terms **b**. Heatmap of Z-score for 23 down/upregulated genes, shared within the “Colorectal cancer”, and “Diabetes” disease terms, in CRC patients with diabetes **c**. Protein–protein interaction (PPI) network analysis of the 23 genes shared within “Colorectal cancer” and “Diabetes” disease terms, along with the Gene Ontology terms for each gene **d**