



Test yourself question: 48-year-old female with paresthesias to the left posterior ankle

Luke W. Adams¹ · Robert E. Van Demark Jr¹ · Victoria Durkin² · Joshua D. Johnson¹ · Andrew J. Erie³

Received: 2 May 2023 / Revised: 30 September 2023 / Accepted: 19 October 2023 / Published online: 6 November 2023
© The Author(s), under exclusive licence to International Skeletal Society (ISS) 2023

Question: A 48-year-old female with several months of paresthesias to the left posterior ankle and hindfoot that worsened with ambulation [Figs. 1, 2, 3, and 4].

Fig. 1 Lateral radiograph



The diagnosis can be found at <https://doi.org/10.1007/s00256-023-04489-z>.

✉ Andrew J. Erie
Andrew.Erie@sanfordhealth.org

Luke W. Adams
adams_luke@live.com

¹ Sanford Health Department of Orthopaedics and Sports Medicine, Sioux Falls, SD 57104, USA

² Sanford Health Department of Pathology, Sioux Falls, SD 57104, USA

³ Sanford Health Department of Radiology, Sioux Falls, SD 57104, USA

Fig. 2 Left ankle MRI with axial (**a-c**) and sagittal (**d-f**) images. (**a**) T1-weighted, (**b**) Fat-saturated T2-weighted, (**c**) Fat-saturated T1-weighted pre-contrast, (**d**) T1-weighted, (**e**) Fat-saturated T2-weighted, (**f**) Fat-saturated T1-weighted post-contrast

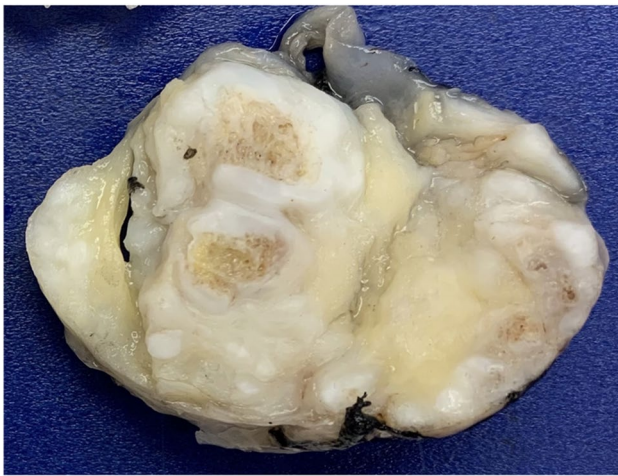
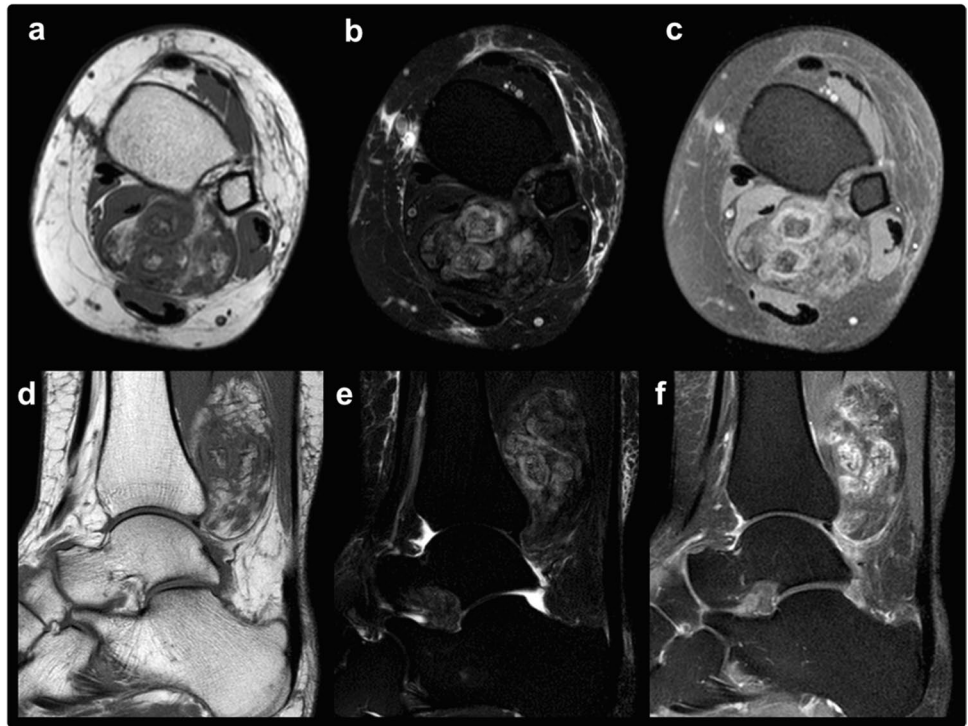


Fig. 3 Gross surgical specimen

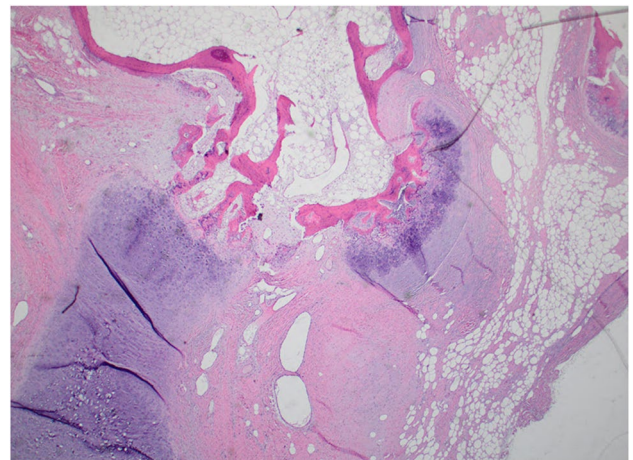


Fig. 4 Histology (H&E, 40X)

Declarations

Conflict of interest The authors declare that they have no conflict of interest.

Publisher's Note Springer Nature remains neutral with regard to jurisdictional claims in published maps and institutional affiliations.