



Test yourself question: pain in the right hemithorax

Tatiana de Almeida Gonçalves Secco¹ · Walter Meohas² · Flavia Martins Costa^{1,3} · Diogo Goulart Corrêa^{3,4}

Received: 23 November 2022 / Revised: 3 January 2023 / Accepted: 31 January 2023 / Published online: 11 February 2023
© The Author(s), under exclusive licence to International Skeletal Society (ISS) 2023

A 32-year-old woman presented with pain in the posterior right hemithorax for 3 months. The patient denied trauma. On physical examination, the patient reported pain with local compression. On auscultation, there was a reduction of the normal vesicular pulmonary sound in the

upper third of the right hemithorax. Blood count test and C-reactive protein were normal. Chest computed tomography and magnetic resonance imaging were performed to investigate the symptoms (Figs. 1 and 2). A biopsy confirmed the final diagnosis (Fig. 3).

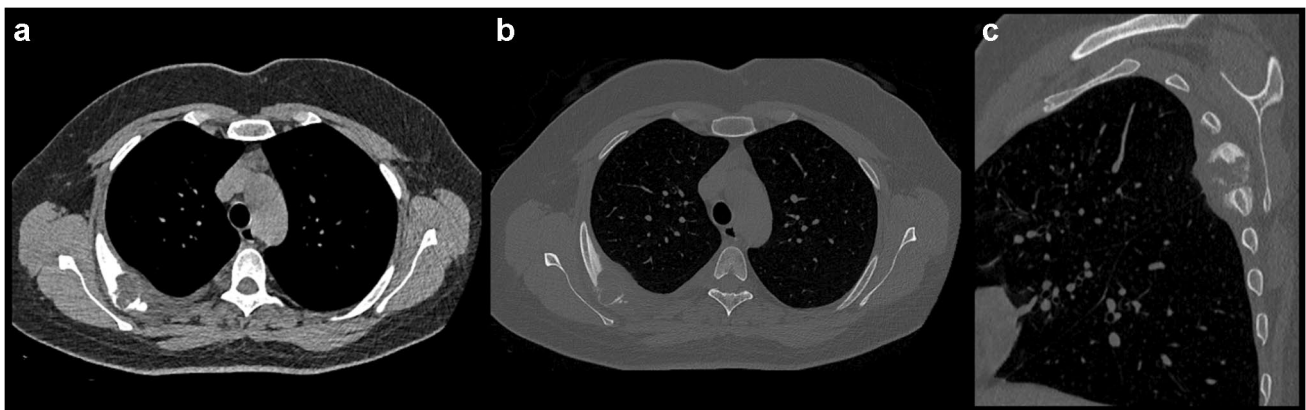


Fig. 1 Chest computed tomography (CT). Mediastinal (a) and bone windows (b), in the axial plane. Chest CT in the oblique sagittal plane, in the bone window (c)

The diagnosis can be found at <https://doi.org/10.1007/s00256-023-04300-z>

✉ Tatiana de Almeida Gonçalves Secco
tatiana.al1987@gmail.com

¹ Department of Radiology, Hospital Universitário Clementino Fraga Filho, Federal University of Rio de Janeiro, Rua Rodolpho Paulo Rocco 255, Cidade Universitária, Ilha Do Fundão, Rio de Janeiro, RJ 21941-913, Brazil

² Department of Orthopedic Oncology, National Institute of Traumatology and Orthopedics, Av. Brasil, 500, Caju, Rio de Janeiro, RJ 20940-070, Brazil

³ Department of Radiology, Clínica de Diagnóstico Por Imagem (CDPI), Avenida das Américas, 4666, 302A, 303, 307, 325, 326, Barra da Tijuca, Rio de Janeiro, RJ 2640-102, Brazil

⁴ Department of Radiology, Federal Fluminense University, Rua Marquês de Paraná, 303, Centro, Niterói, RJ 24070-035, Brazil

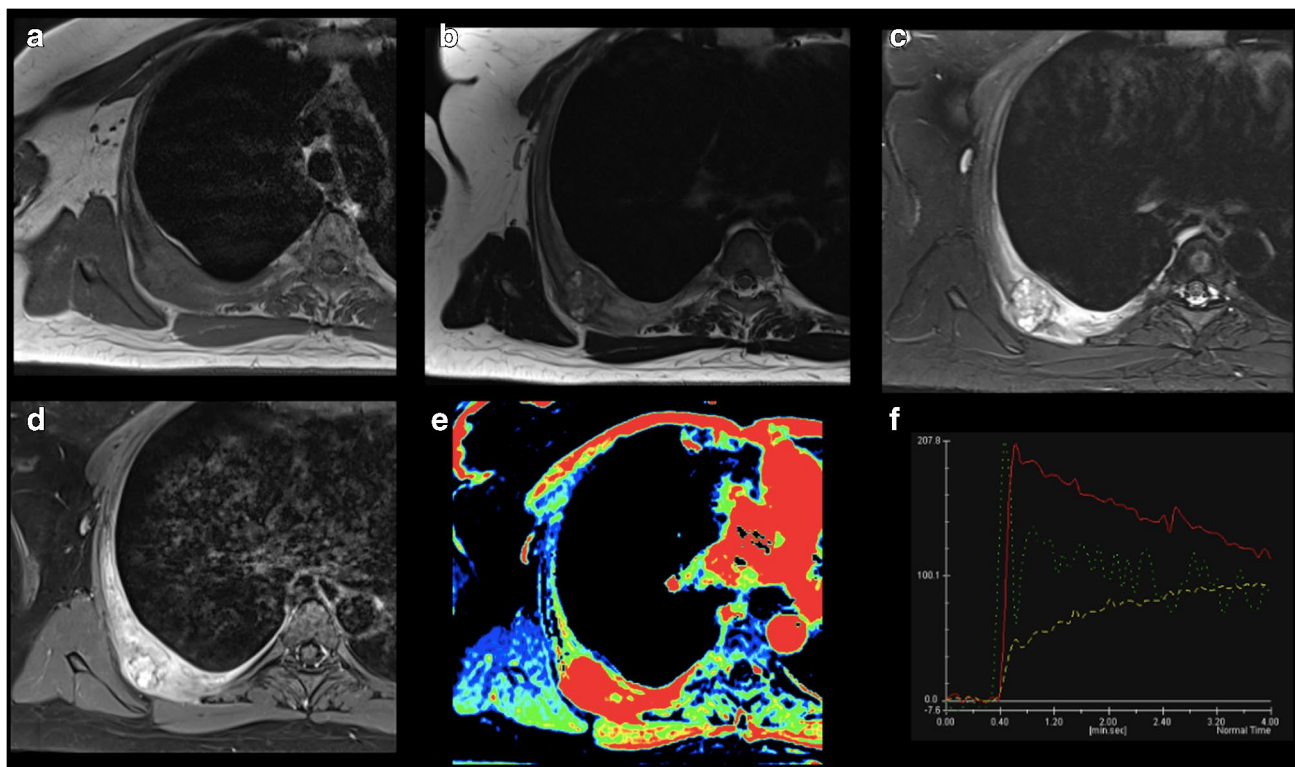


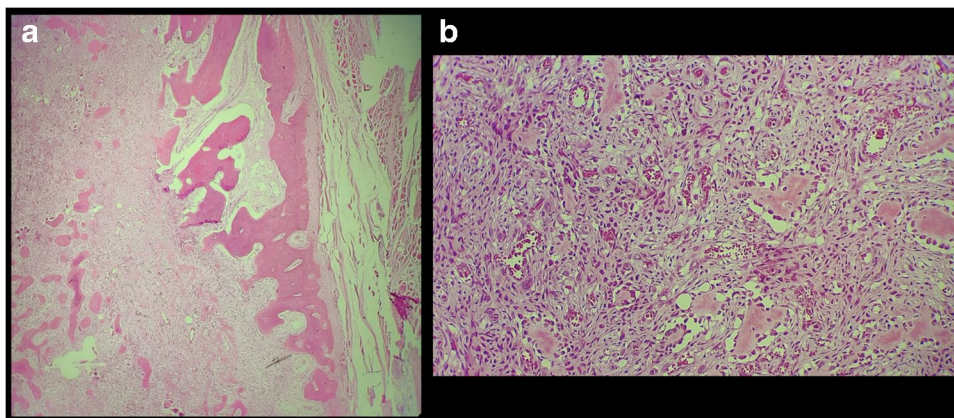
Fig. 2 Chest magnetic resonance imaging (MRI). T1- (a), T2-weighted imaging (b), short tau inversion recovery (c), T1-weighted imaging with fat saturation after intravenous gadolinium injection (d), and color-coded

semi-quantitative dynamic contrast-enhanced (DCE) perfusion-weighted imaging (e), in the axial plane. Time-signal intensity curve analysis of the perfusion weighted imaging

Fig. 3 Histopathological examination.

(a) Hematoxylin and eosin staining (original magnification, 40X).

(b) Hematoxylin and eosin staining (original magnification, 200X)



Declarations

Ethics approval All procedures performed in studies involving human participants were in accordance with the ethical standards of the institutional and national research committee and with the 1964 Helsinki Declaration and its later amendments or comparable ethical standards.

Informed consent Informed consent was obtained from the participant included in the study.

Animal rights This article does not contain any studies with animal subjects performed by any of the authors.

Conflict of interest The authors declare no competing interests.

Publisher's note Springer Nature remains neutral with regard to jurisdictional claims in published maps and institutional affiliations.