



Test Yourself Question: A 69-year-old male presented with a 20-year history of left calf swelling that began following a fall from a tree

Susan Hesni¹ · Mostafa Ellatif¹ · Davoud Khodatars¹ · Daniel Lindsay² · Asif Saifuddin¹

Received: 28 January 2022 / Revised: 25 March 2022 / Accepted: 28 March 2022 / Published online: 2 April 2022
© The Author(s), under exclusive licence to International Skeletal Society (ISS) 2022

Question: A 69-year-old male presented with a 20-year history of left calf swelling that began following a fall from a tree (Figs. 1, 2 and 3).



Fig. 1 (a) AP and (b) lateral radiographs of the left calf

The diagnosis can be found at <https://doi.org/10.1007/s00256-022-04048-y>

✉ Susan Hesni
susan.hesni@nhs.net

¹ Department of Radiology, Royal National Orthopaedic Hospital (RNOH), Stanmore, UK

² Department of Histopathology, Royal National Orthopaedic Hospital (RNOH), Stanmore, UK

Fig. 2 (a) coronal T1W TSE and (b) axial PDW FS TSE MR images of the left calf

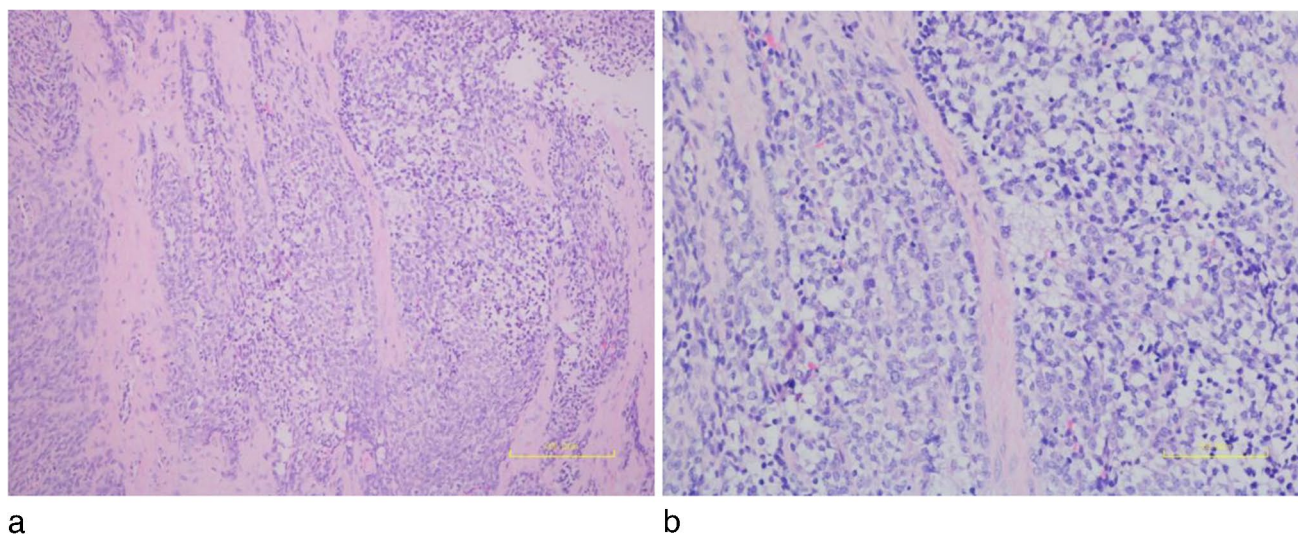
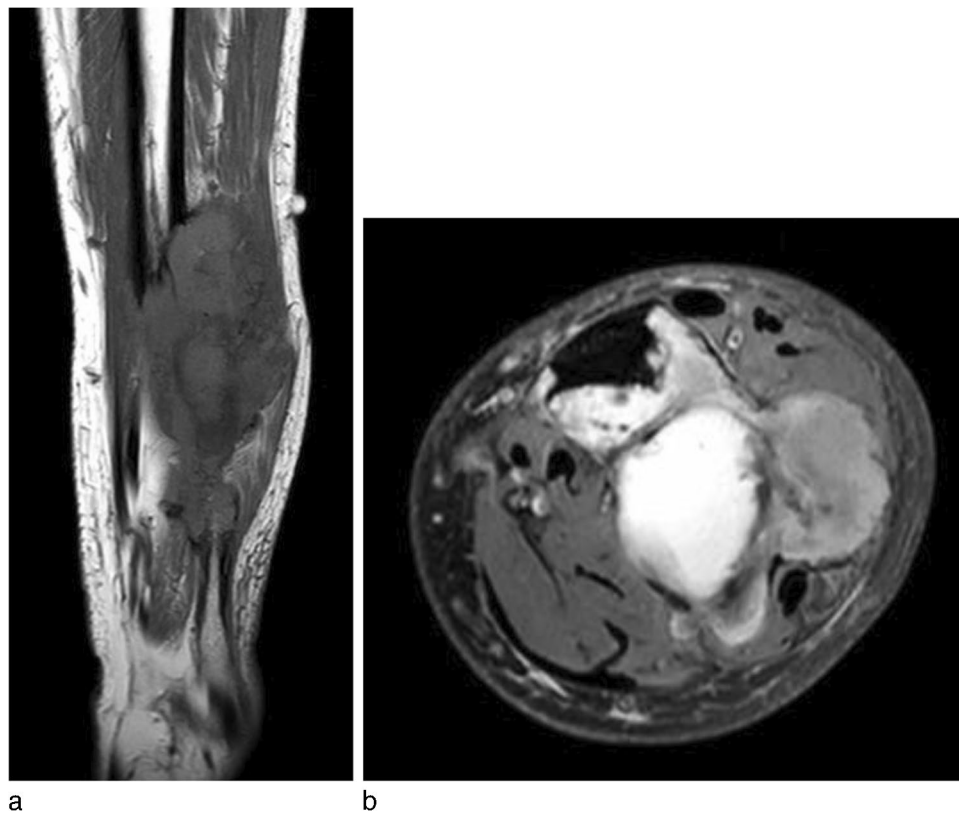


Fig. 3 (a) Histology (H&E $\times 10$). (b) (H&E $\times 20$)

Declarations

Conflict of interest The authors declare that they have no conflicts of interest.

Publisher's note Springer Nature remains neutral with regard to jurisdictional claims in published maps and institutional affiliations.