



Test Yourself Question: A 38-year-old male presenting with a 1-year history of medial right knee pain

Susan Hesni¹ · Daniel Lindsay² · Asif Saifuddin¹

Received: 22 December 2021 / Revised: 22 December 2021 / Accepted: 17 January 2022 / Published online: 24 January 2022
© ISS 2022

Question

A 38-year-old male presenting with a 1-year history of medial right knee pain. There was no previous trauma (Figs. 1, 2, and 3).

The diagnosis can be found at <https://doi.org/10.1007/s00256-022-03998-7>

✉ Susan Hesni
susan.hesni@nhs.net

¹ Department of Radiology, Royal National Orthopaedic Hospital (RNOH), Brockley Hill, Stanmore HA7 4LP, UK

² Department of Histopathology, Royal National Orthopaedic Hospital (RNOH), Brockley Hill, Stanmore HA7 4LP, UK

Fig. 1 MRI of the right knee. **a** Sagittal T1W TSE, **b** coronal fat suppressed PDW FSE, and **c** axial fat suppressed post-contrast T1W FSE MR images

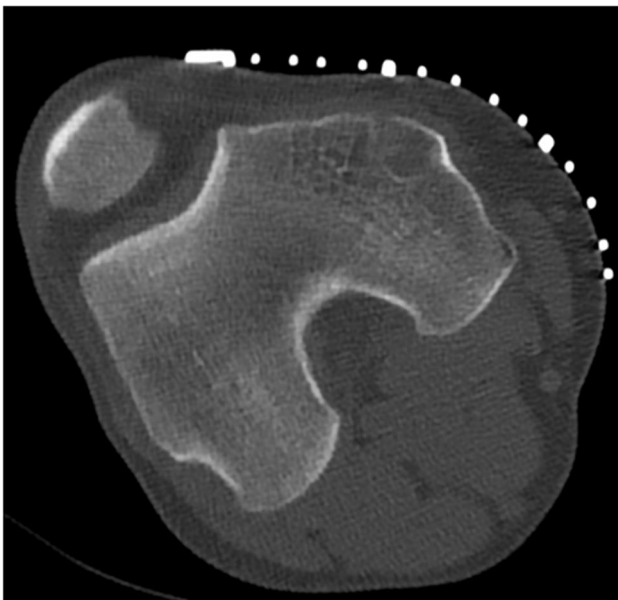


Fig. 2 CT obtained at the time of biopsy

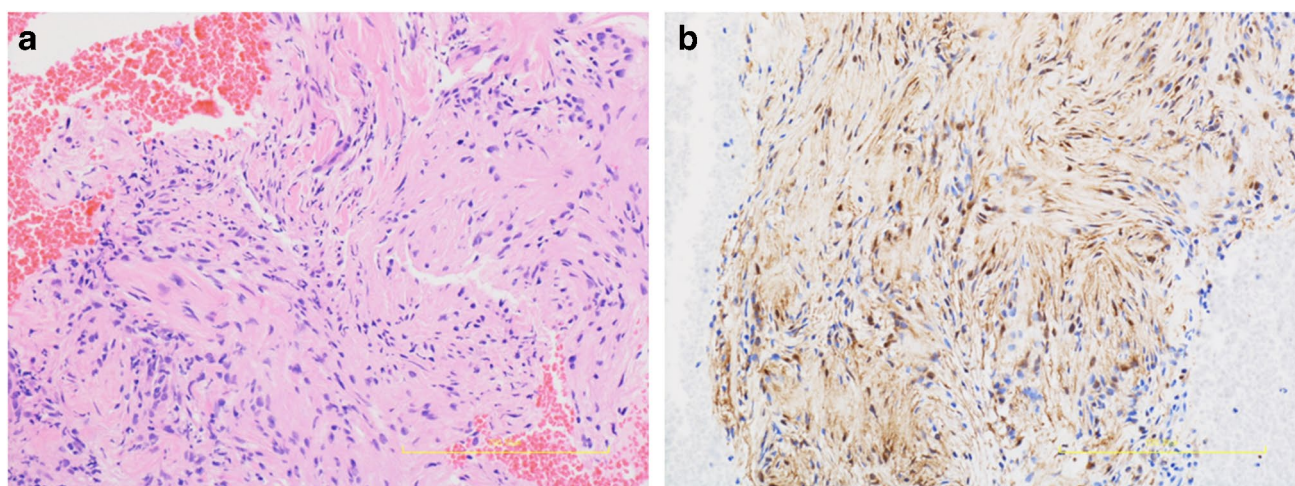


Fig. 3 Histology. **a** H&E x X magnification. **b** Immunohistochemistry for S100

Declarations

Conflict of interest The authors declare that they have no conflicts of interest.

Publisher's note Springer Nature remains neutral with regard to jurisdictional claims in published maps and institutional affiliations.